



Phylogeography of *Barbastella* *barbastellus* in the Western Mediterranean and the Canary Islands

Authors: Juste, Javier, Ibáñez, Carlos, Trujillo, Domingo, Muñoz, Joaquín, and Ruedi, Manuel

Source: *Acta Chiropterologica*, 5(2) : 165-175

Published By: Museum and Institute of Zoology, Polish Academy of Sciences

URL: <https://doi.org/10.3161/001.005.0201>

BioOne Complete (complete.BioOne.org) is a full-text database of 200 subscribed and open-access titles in the biological, ecological, and environmental sciences published by nonprofit societies, associations, museums, institutions, and presses.

Your use of this PDF, the BioOne Complete website, and all posted and associated content indicates your acceptance of BioOne's Terms of Use, available at www.bioone.org/terms-of-use.

Usage of BioOne Complete content is strictly limited to personal, educational, and non - commercial use. Commercial inquiries or rights and permissions requests should be directed to the individual publisher as copyright holder.

BioOne sees sustainable scholarly publishing as an inherently collaborative enterprise connecting authors, nonprofit publishers, academic institutions, research libraries, and research funders in the common goal of maximizing access to critical research.

Phylogeography of Barbastelle bats (*Barbastella barbastellus*) in the western Mediterranean and the Canary Islands

JAVIER JUSTE¹, CARLOS IBÁÑEZ¹, DOMINGO TRUJILLO², JOAQUÍN MUÑOZ¹,
and MANUEL RUEDI³

¹Estación Biológica de Doñana (CSIC), P.O. Box 1056, 41080 Sevilla, Spain; E-mail of JJ: juste@ebd.csic.es

²C/El Durazno 47, 38400 Puerto de la Cruz, Tenerife, Spain

³Natural History Museum, P.O. Box 6434, 1211 Geneva 6, Switzerland

We use two mitochondrial DNA fragments with different substitution rates (cytochrome *b* gene and the control region) to address the following phylogeographic questions about western Palaeartic populations of the barbastelle bat (*Barbastella barbastellus*): 1) Do the Iberian populations of barbastelles show any genetic discontinuity associated with its present fragmented distribution?, 2) Is the Gibraltar Strait an effective barrier to gene flow for barbastelles? and 3) Is the subspecies from the Canary Islands genetically distinct from continental barbastelles? Our molecular survey shows that there is only a shallow genetic structure among populations of the Iberian Peninsula and Morocco, and probably, even across Europe until Thrace, although this last point needs to be confirmed. The Gibraltar Strait has not played any significant role as a biogeographic barrier to prevent the recent passage of European barbastelles to Morocco (or vice versa). Our phylogenetic reconstructions also confirm the taxonomic distinction of *B. barbastellus guanchae* as an endemic subspecies confined to the Canary Islands. The precise origin of this Canarian taxon is, nevertheless, still unclear as its mitochondrial lineage is distinct from any lineage found so far in Morocco and Iberia. This important genetic distinctness suggests either a relatively ancient colonization of the Canary Islands or that the source population of the founders have not yet been identified.

Key words: *Barbastella*, Mediterranean, Canary Islands, phylogeography, cytochrome *b*, control region, colonization, mitochondrial DNA, Gibraltar Strait

INTRODUCTION

The western barbastelle (*Barbastella barbastellus*) is a bat with mainly a European distribution stretching from the Atlantic coast to the Caucasus. Still, it is also found in few scattered localities of northern Africa and the Canary Islands (Rydell and Bogdanowicz, 1997). This species, one of the rarest bats in Europe (Urbańczyk, 1999), selects densely forested areas as foraging grounds (Sierro, 1999). Its current distribu-

tion is fragmented, due probably to the shrinking of suitable habitat which is now often restricted to mountain areas. Consequently, many populations are at present geographically isolated from each other, particularly along the southern part of its distribution, e.g., Morocco (Rift and Atlas Mountains) or the southern half of the Iberian Peninsula (Ibáñez *et al.*, 1992; Ibáñez, 1998; Trujillo *et al.*, 2002). It is not known whether this fragmentation has an impact on the remnant genetic structure of

barbastelle bats, or whether major historical barriers such as the Gibraltar Strait have played any role in shaping this genetic structure by impeding genetic exchanges between Iberian and Maghrebian populations.

The Canary Islands are part of the Macaronesian region and support only six distinct genera of bats: *Barbastella*, *Plecotus*, *Pipistrellus*, *Hypsugo*, *Nyctalus* and *Tadarida* (Trujillo, 1991; Mitchell-Jones *et al.*, 1999). In the Canary archipelago, western barbastelle bats are quite rare as they are known, so far, only from La Gomera and Tenerife islands (Trujillo, 1991). Moreover, these island populations are also morphologically distinct from continental counterparts, and in fact, have recently been proposed to represent a distinct endemic subspecies (Trujillo *et al.*, 2002). If valid, this new taxon would be the only subspecies of *B. barbastellus*, which is otherwise considered as monotypic throughout its distribution (Rydell and Bogdanowicz, 1997; Horáček *et al.*, 2000).

Estimating the degree of intra-specific genetic structure and understanding the forces that determine genetic patterns in a particular species, are of high interest both from evolutionary and conservation perspectives. In relation to the barbastelle bats and using a phylogeographic approach based on mitochondrial DNA (mtDNA), we were interested in focusing on three main questions: (1) Do the Iberian populations of barbastelles show any genetic discontinuity associated with its present fragmented distribution?, (2) Is the Gibraltar Strait an effective barrier to gene flow for barbastelles? and (3) Is the subspecies from the Canary Islands genetically distinct from continental barbastelles?.

MATERIALS AND METHODS

Samples and DNA amplification

A total of 24 *B. barbastellus* were sampled from the Iberian Peninsula, Central Europe, Thrace, Morocco and the Canary Islands (Fig. 1, Table 1).

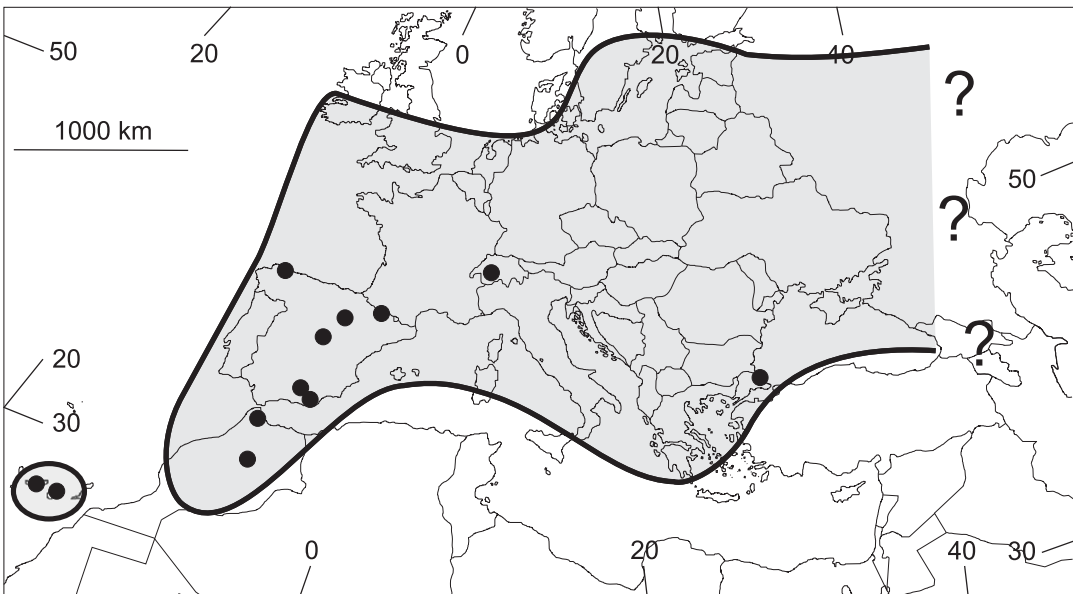


FIG. 1. Map of the approximate distribution of *Barbastella barbastellus* in the western Palearctic according to Urbańczyk (1999) and localities sampled for this study (see Table 1 for details)

TABLE 1. List of specimens, localities and accession numbers of the samples of *B. barbastellus* used for this study. *cyt-b* – cytochrome *b*, *CR* – control region

Specimen	Locality	Geographic coordinates	GenBank Acc.N°		Voucher
			<i>cyt-b</i>	CR	
Bba9.CAG	La Gomera, Canary Is., Spain	28°06'N, 17°08'W	AF513745	AF515152	EBD16028
Bba10.CAG	La Gomera, Canary Is., Spain	28°06'N, 17°08'W	AF513745	AF515152	EBD16024
Bba150.CAG	La Gomera, Canary Is., Spain	28°06'N, 17°08'W	–	AF515152	MNH110
Bba148.CAT	Santa Úrsula, Tenerife, Canary Is., Spain	28°24'N, 16°28'W	AF513745	AF515152	Biopsy
Bba149.CAT	Santa Úrsula, Tenerife, Canary Is., Spain	28°24'N, 16°28'W	AF513745	AF515152	Biopsy
Bba49.CAT	La Matanza, Tenerife, Canary Is., Spain	28°25'N, 16°26'W	AF513745	AF515152	Biopsy
Bba35.MO	Azrou, Morocco	33°24'N, 05°13'W	AF513752	AF515162	EBD25831
Bba850.MO	Tetouan, Morocco	35°35'N, 05°20'W	AY254570	AY254218	Biopsy
Bba174.IB	Viator, Almería, Spain	36°53'N, 02°25'W	AF513750	AF515158	Biopsy
Bba197.IB	Río Bornova, Guadajajara, Spain	41°10'N, 03°00'W	AF513748	AF515154	Biopsy
Bba11.IB	El Rasillo, La Rioja, Spain	42°12'N, 02°41'W	AF513746	AF515153	EBD15181
Bba12.IB	El Rasillo, La Rioja, Spain	42°12'N, 02°41'W	AF513747	AF515154	EBD15981
Bba145.IB	El Rasillo, La Rioja, Spain	42°12'N, 02°41'W	AF513748	AF515155	Biopsy
Bba146.IB	El Rasillo, La Rioja, Spain	42°12'N, 02°41'W	AF513748	AF515154	Biopsy
Bba47.IB	Belsué, Huesca, Spain	42°19'N, 00°22'W	AF513750	AF515163	Biopsy
Bba48.IB	Belsué, Huesca, Spain	42°19'N, 00°22'W	AF513749	AF515156	Biopsy
Bba147.IB	Belsué, Huesca, Spain	42°19'N, 00°22'W	AF513749	AF515156	Biopsy
Bba277.IB	Ordesa, Huesca, Spain	42°40'N, 00°00'W	AF513749	AF515161	Biopsy
Bba278.IB	Ordesa, Huesca, Spain	42°40'N, 00°00'W	AF513749	AF515156	Biopsy
Bba89.IB	Ortigueira, A Coruna, Spain	43°41'N, 07°51'W	–	AF515164	Biopsy
Bba849.IB	Baza, Granada, Spain	37°23'N, 02°51'W	AF513750	AF515158	Biopsy
Bba198.TK	Sarpdere, Thrace, Turkey	40°52'N, 26°25'E	AF513753	AF515159	Biopsy
Bba199.TK	Sarpdere, Thrace, Turkey	40°52'N, 26°25'E	AF513751	AF515160	Biopsy
Bba165.SW	Martigny, Valais, Switzerland	46°10'N, 07°08'E	AF513749	AF515157	MHNG 1804.94

DNA was extracted either from wing biopsies following Higuchi *et al.* (1988) or from tissue samples preserved in ethanol following standard phenol/chloroform protocols (Maniatis *et al.*, 1989). The primer pair L14724 (Irwin *et al.*, 1991) and MVZ16 (Smith and Patton, 1993) was used to amplify a fragment about 800 bp long of the mitochondrial cytochrome *b* gene (*cyt-b*). Likewise, primers L15975 (Wilkinson and Chapman, 1991) and H16498 (Fumagalli *et al.*, 1996) were used to amplify the left domain of the mitochondrial control region (CR). This non-coding segment includes the first hyper-variable region (HV1) and usually a stretch of variable tandem R1 repeats (Fumagalli *et al.*, 1996; Wilkinson *et al.*, 1997). The PCR profile consisted in 4 min initial denaturation at 94°C followed by 39 cycles of 60 s at 94°C, 30 s at 45–50°C (for the *cyt-b*), and 2 min at 72°C and a final extension of 10 min at 72°C. The annealing temperature for the CR was 55°C. PCR products were purified and sequenced using an ABI 377 or an ABI 3100 automated sequencer (PE Biosystems, Warrington, UK) following the manufacturer's protocols.

Sequence and Phylogenetic Analyses

Alignments were obtained with Sequencher 4.1 (Gene Codes Crop.). No evidence of heteroplasmy was detected in any individual. For the non-coding region, the sequences were further inspected by eye to minimize alignment gaps (indels). Only different haplotypes for each fragment were included in the analyses. For each data set, the best fitting substitution model was selected with hierarchical likelihood ratio tests (LRT) (Modeltest soft., Posada and Crandall, 1998) and levels of genetic differentiation between groups were calculated using MEGA v. 2.1 (Kumar *et al.*, 2001).

After testing for congruence between data sets, the 5' end of the CR fragment was joined to the 3' end of the *cyt-b* sequence in a single string to obtain the most informative phylogenetic reconstruction. A Maximum Parsimony (MP) approach (unweighed heuristic search, TBR branch swapping) was used to build our phylogenetic hypothesis using PAUP* 4.0b10 (Swofford, 2000). Robustness of the topology was assessed through bootstrapping (Felsenstein, 1985) with 5000 replicates and heuristic search. Another approach to infer phylogenetic relationships consisted in the construction of a median-joining network (Bandelt *et al.*, 1999) with all haplotypes found in the joint sequences. This approach combines the topology of a minimum spanning tree with a parsimony-based search of the absent nodes or haplotypes (median vectors) not found in the sampling (Posada

and Crandall, 2001). The network was obtained with the software NETWORK 3.1.1 (Röhl, 2003).

RESULTS

A 680 bp fragment of the *cyt-b* and 391 bp of CR were sequenced and aligned for 22 and 24 specimens respectively (Table 1). For the *cyt-b*, a total of 10 different haplotypes were found that showed 45 variable positions (Table 2) of which 19 were parsimony informative. Most of substitutions were transitions and located in third positions (77.8%). For the CR fragment, we found more variability, although less than the expected five times higher variation with respect to the *cyt-b* fragment. In fact, the 24 CR sequences represented a total of 13 different haplotypes with 75 polymorphic sites (Table 2) of which 32 were parsimony informative. The alignment of this fragment required two deletions in the unique haplotype from the Canary Islands (Table 2). All unique haplotypes in both CR and *cyt-b* fragments are deposited in GenBank (accession numbers in Table 1). The overall nucleotide composition was biased towards a deficit of guanine for *cyt-b* sequences ($A = 0.283$, $C = 0.293$, $G = 0.159$, $T = 0.264$), a result typical for mammalian sequences. On the other hand, the fragment of CR showed cytosine bias ($A = 0.248$, $C = 0.113$, $G = 0.258$, $T = 0.380$). For the *cyt-b*, the selected model was HKY85 with a Ts:Tv ratio of 5.55, no invariable sites and site heterogeneity (γ -shape parameter = 0.008). Similarly, for the CR a HKY85 model was selected with a Ts:Tv ratio of 15.04 with site heterogeneity (γ -shape parameter = 0.14).

Both partitions of sequences showed high compatibility ($P = 0.91$ in a partition-homogeneity test). The MP reconstruction based on the 14 different haplotypes for the concatenated sequenced resulted in three trees with length of 156 steps and consistency index of 0.823 and retention index of

TABLE 2. Polymorphic sites identified in the mitochondrial DNA fragments sequenced of *B. barbastellus* for the cyt-*b* ($n = 45$) (above), and for the CR (below)

Hap. #	Number of Variable Sites
123456789012345678901234567890123456789012345	1111111112222222233333333333333444444
Bba11IB	CCTTTGAAGTTCCTTGCGCAGGCATGTAGAAGAAAAATCGTGTTA
Bba12IB C A G C
Bba48IB	. T . . . A . . C . . T . C . . . T . A G C
Bba174IB	. T .
Bba35MO	. TC . . A . . A . . T . C TA G C
Bba850MO	. T . . A . . A . . T . C T G C
Bba165SW	. T . . A . . C . . T . C T . A G C
Bba198TK	. T . G AATCTCCC
Bba199TK	. T . . . A T . C . . . G . A A G GAATCTCCC
Bba9CAG	. T . . GCAGGA . CTTCCCTA . . AATGC . CTA . . AGTGG C

Hap. #	Number of Variable Sites
1234567890123456789012345678901234567890123456789012345678901234567	11111111111222222223333333333334444444444444555555566666666677777777
Bba11IB	GGGTACGGCATA GTACCTCGTTAATCCGGTAAATGCGAGGGTACTATACGTAATTTAGTAGGAAAGTACGCACC
Bba12IB T A . G A C C A . G . A
Bba47IB TT C G A . T . C GA
Bba48IB T A . G A C A . G . A
Bba145IB	. C .
Bba174IB	. C TT C G AG . C . C . G GA
Bba277IB	. A TAA T . . . A G . G . . . TA . A . AC . T G G TA
Bba35MO	. A TA T . . A G . G . . . TA . A . AC . T G G TA
Bba850MO	. A . C TT C G A . C . C GA C C
Bba165SW	. A T C A . G A C TA . . . A . . . GA . . G . A . . A . G .
Bba198TK	. A T CC . T . A . G A C TA . GA G A G .
Bba199TK	AA . -GTAC . TCGGACGTTCTACCGGC . T . AA . . G -GGTG . G . AACGTC . . G . A . G CGAC . . AG . G . G . T . TGGT

0.759. The consensus tree (Fig. 2) is well structured and indicates a sharp distinction between the lineage from the Canary Islands and all haplotypes of *barbastelle* bats from the rest of the range (Iberia, Switzerland, Morocco and Turkey). This

tree further differentiates Moroccan and Turkish haplotypes in two well-supported groups. Finally, it also supports three clades among the Iberian samples: one (*IB-1*) that is widespread across the Peninsula, one (*IB-2*) restricted to the northern parts, and

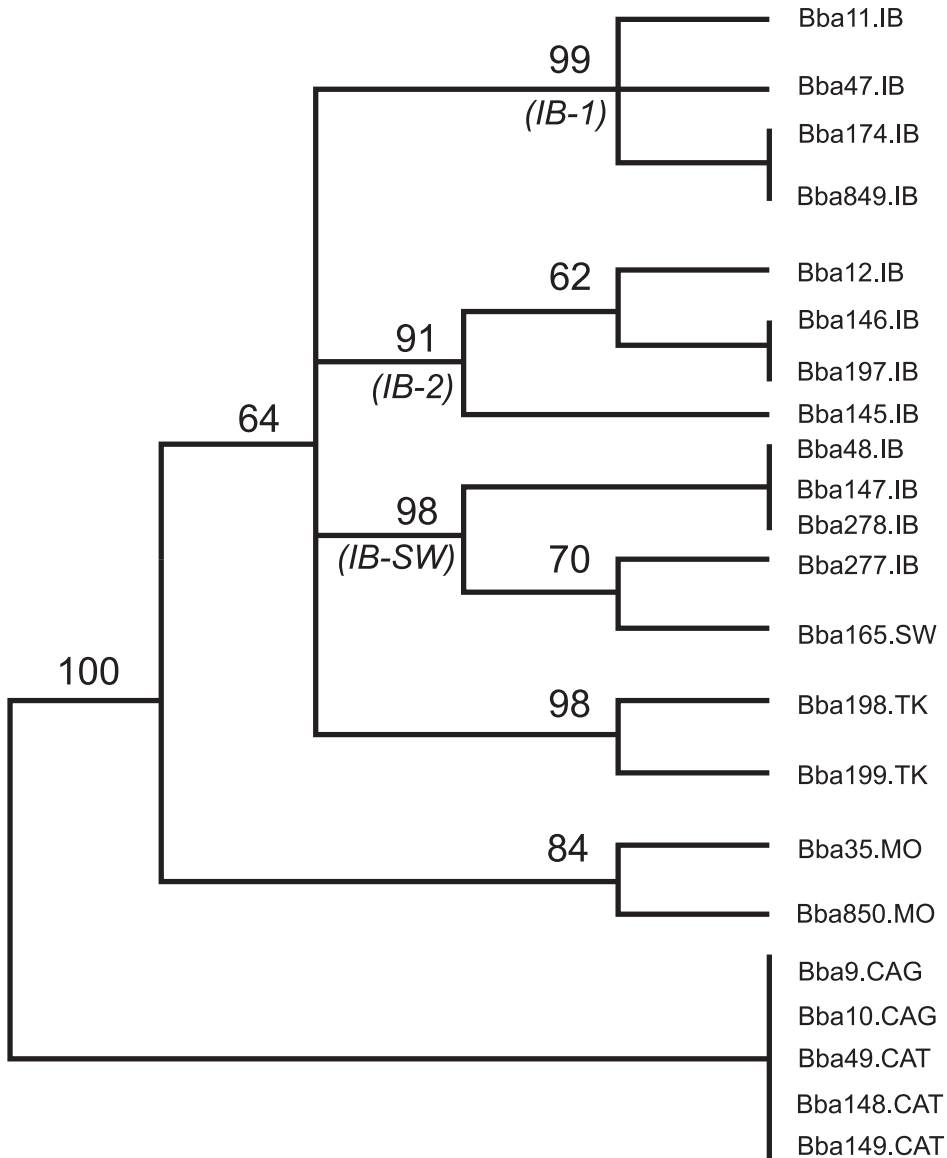


FIG. 2. Maximum Parsimony reconstruction (unweighed heuristic search, TBR branch swapping) of the phylogenetic relationships of western Palearctic *Barbastella* bats based on the sequences of 14 different haplotypes (in 22 specimens) in a joint fragment of the cytochrome *b* gen (680 bp) and the control region (391 bp). Bootstrap values after 5000 replicates. Location codes: CAG = La Gomera (Canary Islands), CAT = Tenerife (Canary Islands), IB = Iberia, MO = Morocco, SW = Switzerland, TK = Turkey

a third (*IB-SW*) that extends beyond the Pyrenees at least to the Alps. Haplotype divergence for the *cyt-b* between continental samples ranged from 0.7% (between the *IB-SW* group and Morocco) to 2.1% between Morocco and Turkey (Table 3). The genetic structure of European barbastelles is illustrated by a median-joining network (Fig. 3) that shows a good concordance with the geographic origin of samples (Fig. 3). Two Iberian clades (*IB-1* and *IB-2*) cluster together and are linked to the third Iberian clade by three median vectors (reconstructed haplotypes). The latter clade (*IB-SW*) also includes the Swiss haplotype.

DISCUSSION

Genetic Divergence

Haplotype divergence found in the barbastelles sampled can be considered very shallow, compared to other bats (Ruedi and Castella, 2003) or to other mammals sampled over a similar range (reviewed in Taberlet *et al.*, 1998).

In fact, when considering only the *cyt-b* gene, the Alpine barbastelle has exactly the same 680 bp sequence (Table 1) as three Iberian samples from two Pyrenean localities (Belsué and Ordesa). This genetic similarity supports the idea that barbastelles from both regions share a common ancestry. In turn, the Turkish samples are placed furthest from other West Palaearctic

haplotypes as they differ by at least 15 mutations from other continental sequences. Nevertheless, this connection requires the reconstruction of only one haplotype (Fig. 2). The overall pattern of haplotypic divergence of western barbastelles is therefore broadly concordant with geographic distances and suggests that western and eastern Mediterranean populations may be issued from divergent two subpopulations. Nevertheless, this point needs further research given the limited coverage of our sampling. At more local scale, the three Iberian groups show no clear geographic arrangement, as the same haplotypes are shared in northern and southern populations (Figs. 2 and 3).

Within any given geographic region, sequence variation in the *cyt-b* ranged from 0.3% between northern and central Morocco to 1.3% between the two Turkish samples. Among the 13 Iberian barbastelles, sequence divergence reached only 0.7% in the *cyt-b* and 2% in CR (Table 3). This shallow genetic structure in the Iberian Peninsula with shared haplotypes among relatively distant regions can indicate recent gene flow, or a recent common history of all barbastelle bats from Iberia. As current genetic patterns result from both historical and contemporary factors (see e.g., Avise, 2000; Ruedi and Castella, 2003), denser sampling is necessary to differentiate these alternatives in order to propose a more complete understanding of the population history of barbastelles in the Iberian Peninsula.

TABLE 3. Corrected genetic distances (HKY85 + Γ model — Hasegawa *et al.*, 1985; see text for details) among the main groups of haplotypes of the western Palaearctic samples of *B. barbastellus* in the *cyt-b* (lower half-matrix) and CR (upper half-matrix) fragments

Haplotype Group	IB-1	IB-2	IB-SW	Morocco	Thrace	Canary Is.
IB-1	–	0.024	0.030	0.054	0.048	0.167
IB-2	0.007	–	0.029	0.046	0.032	0.172
IB-SW	0.011	0.008	–	0.049	0.038	0.170
Morocco	0.011	0.009	0.007	–	0.055	0.156
Thrace	0.019	0.018	0.020	0.021	–	0.168
Canary Is.	0.044	0.041	0.040	0.038	0.055	–

Effect of the Gibraltar Strait

Although no haplotypes are shared between Iberian and Moroccan lineages, they diverge only slightly from each other. The average sequence divergence between them is about 1% for the *cyt-b* and 5% for the CR fragments respectively (Table 3), which is again very low compared to other mammals across Europe (e.g., Taberlet *et al.*, 1998) or to other bats across the Strait (Castella *et al.*, 2000 or Juste *et al.*, In press). This small divergence (Table 3) suggests that the common ancestor to these lineages is relatively recent, possibly Holocene, if a common molecular clock is applied (Johns and Avise, 1998). With the available molecular data, it is, however, not possible to determine whether the ancestral lineage expanded from Europe southwards through the Gibraltar Strait to Morocco, or the reverse.

The traditional view, based on fossil remains and the current geographic distribution of barbastelle bats (Rydell and Bogdanowicz, 1997) would favour the migration route through the Iberian Peninsula. A third alternative route to the colonization of Morocco could be via eastern North Africa. However, this is unlikely since *Barbastella* has never been reported from any recent locality or fossil deposit in the intervening regions of North Africa.

In any case, the relatively recent common ancestor of the lineages found on either sides of the Gibraltar Strait suggest that this strait did not act as an ancient barrier to gene flow in *Barbastella*, contrary to the situation found in other Plecotine bats (Juste *et al.*, In press) or in the large *Myotis* (Castella *et al.*, 2000). Respective to the Gibraltar Strait, *Barbastelles* thus behave rather like another patchily distributed

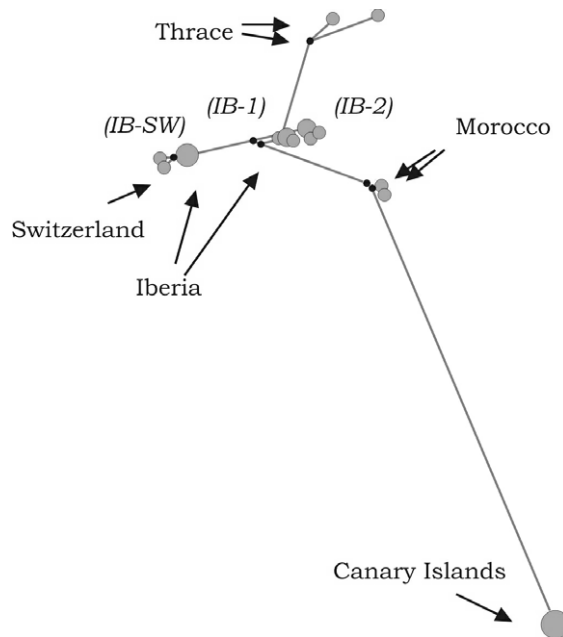


FIG. 3. Median-joining network based on 14 haplotypes found in a joint mitochondrial DNA fragment of 680 bp of the cytochrome *b* and 391 bp fragment of the control region. Black dots represent reconstructed missing haplotypes in the sampling. Size of the circles is proportional to the frequency of each particular haplotype and distance between haplotypes is proportional to the number of mutated positions

bat, *Myotis mystacinus*, which has also similar genotypes on either sides of the strait (Helvesen *et al.*, 2001). More species of bats need to be analyzed genetically to identify the reasons why some species do cross the strait more often than others.

The Barbastelles of the Canary Islands

The *cyt-b* sequence divergence between the single haplotype from the Canary Islands and the mainland lineages is relatively high (averaging 3.9 and 4.2% to Moroccan and the Iberian haplotypes respectively; Table 3) and corresponds to the value reported by Pestano *et al.* (2003) for a Canarian population and one specimen from Iberia sequenced at the same gene. Pestano *et al.* (2003), however, found two slightly divergent *cyt-b* haplotypes among seven barbastelles from Tenerife Island, while all our Canarian samples (including three from Tenerife and three from La Gomera) were identical. Our Canarian samples proved to be identical even when they were sequenced for the more rapidly evolving CR (Table 1). Together, these molecular data suggest that the Canary Islands were colonized quite recently by a few, related individuals. The phylogenetic reconstructions did not solve the exact origins of the Canary Island lineages unambiguously (Fig. 2). The network required only two putative intermediate haplotypes to connect the existing sequence from the Canary Islands with those from Morocco (Fig. 3). Thus Morocco is a likely source to the founder population of the Canary Islands, but the exact origins might be difficult to identify either because the source population was actually unsampled, or have gone extinct. From a taxonomic perspective, the low level of *cyt-b* sequence divergence (1–2%) found among samples collected throughout the western Palaearctic region supports the monotypic status of *B. barbastellus* in Europe and in

North Africa, as suggested by Rydell and Bogdanowicz (1997) and Horáček *et al.* (2000). On the other hand, the quite high level of *cyt-b* sequence divergence found between the insular and mainland samples (Table 3) supports the sub-specific status of the endemic Canary Islands barbastelles (*B. barbastellus guanchae*) as proposed by Trujillo *et al.* (2002) on the basis of morphological evidence. At present the only known populations from these islands inhabit the western and forested parts of Tenerife and La Gomera (Trujillo, 1991). The low genetic diversity in this endemic taxon needs further scrutiny to evaluate its possible relevance from a conservation perspective. The species is only known from very few localities, and in fact, it can be considered at present the rarest bat in the Canary Islands (Trujillo *et al.*, 2002).

In conclusion, results from two mtDNA fragments show that there is only a shallow genetic structure among populations of the Iberian Peninsula and Morocco, and apparently, even across Europe east to Thrace. Although this needs to be confirmed given the limitations resulting from our incomplete sampling. The Gibraltar Strait did apparently not prevent the passage of European barbastelles to Morocco (or vice versa). Finally, our molecular reconstructions confirm the recent taxonomic distinction at subspecies level of *B. barbastellus guanchae* from the Canary Islands (Trujillo *et al.*, 2002), but their exact origin is still unclear because it is distinct from any lineage found so far in Morocco or in Europe.

ACKNOWLEDGEMENTS

We are grateful to J. Aihartza, J. Garrido, J. Noguera, M. de Lucas and L. García, the Société Spéléologique d'Agadir (Morocco), and R. Arlettaz of the University of Bern (Switzerland) for helping with the collection of samples. The institutional Junta de Andalucía, Gobierno de la Rioja, Gobierno de Canarias (Spain), and Centre de Coordination de la Protection des Chauves-souris de Suisse (Switzerland),

provided collecting permits. P. Actander helped us with sequencing at the Zoological Institute of Copenhagen, the Natural History Museum of Geneva provided us with laboratory facilities and financial support. R. Atkinson revised in depth the manuscript. This research is part of the projects REN2000-1639 and REN2002-01372 /GLO funded by the Dirección General de Investigación of the Spanish Ministry of Science and Technology, with additional funding support for sequencing and travel expenses to JJ from the European Union.

LITERATURE CITED

- AVISE, J. C. 2000. *Phylogeography: the history and formation of species*. Harvard University Press, Cambridge, MA, 447 pp.
- BANDELT, H. J., P. FORSTER, and A. RÖHL. 1999. Median-joining networks for inferring intraspecific phylogenies. *Molecular Biology and Evolution*, 16: 36–48.
- CASTELLA, V., M. RUEDI, L. EXCOFFIER, C. IBÁÑEZ, R. ARLETTAZ, and J. HAUSSER. 2000. Is the Gibraltar Strait a barrier to gene flow for the bat *Myotis myotis* (Chiroptera: Vespertilionidae)? *Molecular Ecology*, 9: 1761–1772.
- FELSENSTEIN, J. 1985. Confidence limits on phylogenies: an approach using the bootstrap. *Evolution*, 39: 783–791.
- FUMAGALLI, L., P. TABERLET, L. FAVRE, and J. HAUSSER. 1996. Origin and evolution of homologous repeated sequences in the mitochondrial DNA control region of shrews. *Molecular Biology and Evolution*, 13: 31–46.
- HASEGAWA, M., H. KISHINO, and T. A. YANO. 1985. Dating of the human-ape splitting by a molecular clock of mitochondrial DNA. *Journal of Molecular Evolution*, 22: 160–174.
- HELVERSEN, O. VON, K.-G. HELLER, F. MAYER, A. NEMETH, M. VOLLETH, and P. GOMBKÖTÖ. 2001. Cryptic mammalian species: a new species of whiskered bat (*Myotis alcaethoe* n.sp.) in Europe. *Naturwissenschaften*, 88: 217–223.
- HIGUCHI, R., C. H. VON BEROLDINGEN, G. F. SENS-ABAUGH, and H. A. ERLICH. 1988. DNA typing from hairs. *Nature*, 332: 543–546.
- HORÁČEK, I., V. HANÁK, and G. GAISLER. 2000. Bats of the Palaearctic region: a taxonomic and biogeographic view. Pp. 11–157, in *Proceedings of the VIII European Bat Research Symposium*. Vol. 1: Approaches to biogeography and ecology of bats (B. W. WOŁOSZYN, ed.). Chiropterological Information Center of the Institute of Systematics and Evolution of Animals PAS, Kraków, 273 pp.
- IBÁÑEZ, C. 1998. Los Quirópteros. Pp. 114–218, in *Mamíferos de España I* (J. C. BLANCO, ed.). Editorial Planeta S. A., Barcelona, 457 pp.
- IBÁÑEZ, C., A. GUILLÉN, R. FERNÁNDEZ, J. L. PÉREZ, and S. I. GUERRERO. 1992. Iberian distribution of some little known bat species. *Mammalia*, 56: 433–444.
- IRWIN, D. M., T. D. KOCHER, and A. C. WILSON. 1991. Evolution of the cytochrome *b* gene of mammals. *Journal of Molecular Evolution*, 32: 128–144.
- JOHNS, G. C., and J. C. AVISE. 1998. A comparative summary of genetic distances in the vertebrates from the mitochondrial cytochrome *b* gene. *Molecular Biology and Evolution*, 15: 1481–1490.
- JUSTE, J., C. IBÁÑEZ, J. MUÑOZ, D. TRUJILLO, P. BENDA, A. KARATAŞ, and M. RUEDI. In press. Mitochondrial phylogeography of the long-eared bats (*Plecotus*) in the Mediterranean Palaearctic and Atlantic Islands. *Molecular Phylogenetics and Evolution*.
- KUMAR, S., K. TAMURA, I. B. JAKOBSEN, and M. NEI. 2001. MEGA2: Molecular Evolutionary Genetics Analysis Software. Arizona State University, Tempe, Arizona.
- MANIATIS, T., E. F. FRITSH, and J. SAMBROOK. 1989. *Molecular cloning: a laboratory manual*. Second ed. Cold Spring Harbor Laboratory Press, Cold Spring Harbor.
- MITCHELL-JONES, A. J., G. AMORI, W. BOGDANOWICZ, B. KRYŠTUFEK, P. J. H. REIJNDERS, F. SPITZENBERGER, M. STUBBE, J. B. M. THISSEN, V. VOHRALÍK, and J. ZIMA. 1999. *The atlas of European mammals*. Academic Press, London, 484 pp.
- PESTANO, J., R. P. BROWN, N. M. SUAREZ, J. BENZAL, and S. FAJARDO. 2003. Intraspecific evolution of Canary Island Plecotine. *Heredity*, 90: 302–307.
- POSADA, D., and K. A. CRANDALL. 1998. MODELTEST: testing the model of DNA substitution. *Bioinformatics*, 14: 817–818.
- POSADA, D., and K. A. CRANDALL. 2001. Intraspecific gene genealogies: trees grafting into networks. *TREE*, 16: 37–45.
- RÖHL, A. 2003. Network, Version 3.1.1b: a program package for calculating phylogenetic networks. Mathematics Seminar, University of Hamburg, Hamburg (<http://www.fluxus-engineering.com>).
- RUEDI, M., and V. CASTELLA. 2003. Genetic consequences of the ice ages on nurseries of the bat *Myotis myotis*: a mitochondrial and nuclear survey. *Molecular Ecology*, 12: 1527–1540.
- RYDELL, J., and W. BOGDANOWICZ. 1997. *Barbastella barbastellus*. *Mammalian Species*, 557: 1–7.
- SIERRO, A. 1999. Habitat selection by *Barbastella barbastellus* in the Swiss

- Alps (Valais). *Journal of Zoology* (London), 248: 429–432.
- SMITH, M. F., and J. L. PATTON. 1993. The diversification of south american murid rodents: evidence from mitochondrial DNA sequence data for the akodontine tribe. *Biological Journal of the Linnaean Society*, 50: 149–177.
- SWOFFORD, D. L. 2000. PAUP*. Phylogenetic analysis using parsimony – (and other methods). Version 4.0b10. Sinauer Associates, Sunderland, Massachusetts.
- TABERLET, P., L. FUMAGALLI, A.-G. WÜST-SAUCY, and J.-F. COSSON. 1998. Comparative phylogeography and postglacial colonization routes in Europe. *Molecular Ecology*, 7: 453–464.
- TRUJILLO, D. 1991. Murciélagos de las Islas Canarias. Colección Técnica, ICONA, Madrid, 167 pp.
- TRUJILLO, D., C. IBÁÑEZ, and J. JUSTE. 2002. A new subspecies of *Barbastella barbastellus* (Mammalia: Chiroptera: Vespertilionidae) from the Canary Islands. *Revue Suisse de Zoologie*, 109: 543–550.
- URBAŃCZYK, Z. 1999. *Barbastella barbastellus*. Pp. 146–147, in *The atlas of European mammals* (A. J. MITCHELL-JONES, G. AMORI, W. BOGDANOWICZ, B. KRYŠTUFEK, P. J. H. REIINDERS, F. SPI-TZENBERGER, M. STUBBE, J. B. M. THISSEN, V. VOHRALIK, and J. ZIMA, eds.). Academic Press, London, 484 pp.
- WILKINSON, G.S., and A. M. CHAPMAN. 1991. Length and sequence variation in evening bat D-loop mtDNA. *Genetics*, 128: 607–617.
- WILKINSON, G.S., F. MAYER, G. KERTH, and B. PETRI. 1997. Evolution of repeated sequence arrays in the D-Loop region of bat mitochondrial DNA. *Genetics*, 146: 1035–1048.

Received 24 July 2003, accepted 21 October 2003