

## **Genetic Stock Structure of Terapon jarbua in Taiwanese Waters**

Author: Liu, Shang-Yin Vanson

Source: Marine and Coastal Fisheries: Dynamics, Management, and Ecosystem Science, 7(7) : 464-473

Published By: American Fisheries Society

URL: <https://doi.org/10.1080/19425120.2015.1074966>

---

BioOne Complete ([complete.BioOne.org](https://complete.BioOne.org)) is a full-text database of 200 subscribed and open-access titles in the biological, ecological, and environmental sciences published by nonprofit societies, associations, museums, institutions, and presses.

Your use of this PDF, the BioOne Complete website, and all posted and associated content indicates your acceptance of BioOne's Terms of Use, available at [www.bioone.org/terms-of-use](https://www.bioone.org/terms-of-use).

Usage of BioOne Complete content is strictly limited to personal, educational, and non - commercial use. Commercial inquiries or rights and permissions requests should be directed to the individual publisher as copyright holder.

---

BioOne sees sustainable scholarly publishing as an inherently collaborative enterprise connecting authors, nonprofit publishers, academic institutions, research libraries, and research funders in the common goal of maximizing access to critical research.

ARTICLE

## Genetic Stock Structure of *Terapon jarbua* in Taiwanese Waters

**Shang-Yin Vanson Liu**

Department of Oceanography and Department of Marine Biotechnology and Resources,  
National Sun Yat-Sen University, Kaohsiung 80424, Taiwan

**I-Hsiang Huang**

Department of Oceanography, National Sun Yat-Sen University, Kaohsiung 80424, Taiwan

**Min-Yun Liu**

Taiwan Ocean Research Institute, National Applied Research Laboratories, Kaohsiung 852, Taiwan

**Hung-Du Lin**

Affiliated School of National Tainan First Senior High School, Tainan 701, Taiwan

**Feng-Yu Wang**

Taiwan Ocean Research Institute, National Applied Research Laboratories, Kaohsiung 852, Taiwan

**Te-Yu Liao\***

Department of Oceanography, National Sun Yat-Sen University, Kaohsiung 80424, Taiwan

---

### Abstract

Over the past century, stock identification, which is crucial for fisheries stock assessments, has relied heavily on intraspecific variations to differentiate management units. In recent years, however, DNA approaches have shed additional light on some aspects of the natural history and ecology of species and stocks. The Crescent Grunter *Terapon jarbua* is widely distributed across the Indo-Pacific region. It inhabits coastal waters with sandy substrates and tends to aggregate in estuaries. In the present study, we collected 96 individuals of *T. jarbua* from 10 locations around the shoreline of Taiwan as well as near Guangdong, China. A concatenated sequence (1,753 bp) of mtDNA (cytochrome *c* oxidase I and cytochrome *b*) was obtained from all individuals. We discovered two genetically distinct clades (lineages A and B) with different historical demographies occurring sympatrically except at the Yilan collection site, which was dominated by lineage A haplotypes. Connectivity within this region is high according to  $F_{ST}$  and AMOVA tests. The genetic variation between the two clades is far below the interspecies threshold for the genus *Terapon* (0.007 versus 0.3156). Therefore, we suggest that they be considered different genetic stocks from a fisheries management point of view and that future stock reassessment should be conducted based on the genetic information provided in this study. Further large-scale sampling is needed to understand the mechanisms that drive genetic partitioning on regional (Northwest Pacific) and global (Indo-Pacific) scales.

---

---

Subject editor: Kristina Miller, Pacific Biological Station, Nanaimo, British Columbia

© Shang-Yin Vanson Liu, I-Hsiang Huang, Min-Yun Liu, Hung-Du Lin, Feng-Yu Wang, and Te-Yu Liao

This is an Open Access article distributed under the terms of the Creative Commons Attribution License (<http://creativecommons.org/licenses/by/3.0>), which permits unrestricted use, distribution, and reproduction in any medium, provided the original work is properly cited. The moral rights of the named author(s) have been asserted.

\*Corresponding author: swp0117@gmail.com

Received February 9, 2015; accepted July 9, 2015

Many marine ecosystems are being degraded by ongoing catastrophic impacts caused by human activities such as overfishing and pollution. The former is currently considered the main factor accounting for the accelerated shrinkage of populations and extinction of species (Jackson et al. 2001; Worm et al. 2006). According to Worm et al. (2006), the fisheries of all currently harvested taxa will collapse by the year 2048 if current exploitation rates persist. Drastic declines in population size due to overfishing could result in a loss of genetic diversity, which may in turn impair species' ability to survive in changing environments. This could produce a vicious cycle leading to failure to recover, even smaller population sizes, and the eventual collapse of marine ecosystems (Worm et al. 2006; Cano et al. 2008).

Stock identification is an interdisciplinary science for studying fisheries stocks, through which appropriate scales of harvesting and monitoring are developed to maintain sustainable fisheries and protect endangered species (Begg et al. 1999). The definition of a fish stock has varied with the approach to identifying and classifying stocks and evolved with management needs (Begg and Waldman 1999). Early definitions relied on distinct internal dynamics and fishery characteristics (Russell 1931). Over the past 100 years, they have strongly depended on different methodological approaches designed to evaluate the homogeneity of populations, e.g., measurements of meristic and reproductive traits as well as geographic distributions. However, these methods can overlook stock structure when dealing with cryptic species/lineages that cannot be distinguished by biological and morphological traits. Without proper methodologies for evaluating stock structure, multiple subpopulations of any given species have generally been managed as a single homogeneous unit. Additionally, due to the enormous size of the ocean and the lack of apparent physical barriers, local populations were considered open systems until a few decades ago (review in Swearer et al. 2002). However, recent evidence has shown that environmental and landscape features can greatly affect and shape population structure at relatively small scales in terms of the life history diversification and local adaptation of aquatic organisms (Storfer et al. 2007). Molecular genetics has made remarkable contributions to our understanding of populations, providing novel insight into previously inaccessible aspects of biological disciplines, e.g., new species descriptions (Allen and Erdmann 2012; Liu et al. 2013) as well as species and management unit identification (Liu et al. 2013; Lim et al., in press). This is especially true for specimens lacking morphological and biological differences among populations (Viñas et al. 2014) or having no morphological information, e.g., shark fins and fish filets (Cutarelli et al. 2014). Genetic markers have also been successfully applied to discriminating the stock structure of fishes (Wu et al. 2014; Singh et al., in press). There is an urgent need to conduct research of this type since species might be genetically heterogeneous over their ranges.

The Crescent Grunter *Terapon jarbua* is widely distributed across the Indo-Pacific region, from the Red Sea to Fiji and Japan (Vari 2001). It inhabits coastal waters with sandy substrates and is euryhaline, with juveniles commonly being found in brackish and fresh waters. It feeds mainly on small fish and invertebrates. Its planktonic larval duration is relatively short and stable, averaging 25.1 d (Lavergne 2012). The *Terapon jarbua* occurs along the coast of Taiwan, especially in estuaries, and is a popular game fish caught mainly for food. Larvae and juveniles enter estuaries in great abundance during May and November for feeding (Miu et al. 1990). Once fully grown, they return to deeper waters away from estuaries for spawning. Although the commercial fishery is minor in terms of total amount, *T. jarbua* is a high-priced species in Taiwan, with adults being caught by long lines and trawlers at depths shallower than 50 m. Its reproduction, body deformation caused by warm water discharged from nuclear power plants, and linear alkylbenzene sulfonate toxicity have been investigated for Taiwanese waters (Miu et al. 1990; Wang and Huang 1995; Chang et al. 2010). However, studies focusing on genetic stock structure have not yet been conducted.

In the present study, the cytochrome *b* (*cyt b*) and cytochrome *c* oxidase I (COI) regions of mtDNA were used as molecular markers to examine the level of genetic differentiation and the historical demography of *T. jarbua* in Taiwanese waters for future management and conservation purposes.

## METHODS

**Sample collection and DNA extraction.**—A total of 96 *T. jarbua* were collected from 10 locations around the shoreline of Taiwan, including New Taipei City (TP), Yilan County (YL), Hua-lian City (HL), Hua-lian County (HFB), Tai-Tung County (TT), Kaohsiung County (KH), Chiayi County (CI), Taichung County (TC), Hsinchu County (HC), Penghu County (PH), and a site near Guangdong, China (RP) (Figure 1). Sample sizes from each locality ranged from 5 to 10 individuals. Genomic DNA was extracted from muscle tissue or fin clips using commercial DNA extraction kits (Genomics BioSci and Tech, Taiwan). DNA extracts were diluted in tris-EDTA buffer and stored at  $-20^{\circ}\text{C}$  until amplification by polymerase chain reaction (PCR).

**Genetic diversity and phylogenetic analyses.**—Complete *cyt b* and partial COI genes were amplified with the following primers: COI: FishF1 = 5'-TCAACCAACCACAAA GACATTGGCAC-3', FishR1 = 5'-ACTTCAGGGTGACCG AAGAATCAGAA-3' (Ward et al. 2005); *cyt b*: Thr33 = 5'-TAACCTTCAGCCTCCTGCTTACA-3', Glu31 = 5'-GTGA CTTGAAAAACCACCGTT-3' (Davis et al. 2012). Polymerase chain reactions were run in 30- $\mu\text{L}$  amounts containing 10–40 ng template DNA, 3  $\mu\text{L}$  10 $\times$  buffer, 0.2 mM dNTPs, 1.5 mM  $\text{MgCl}_2$ , 10 mM of each primer, and 0.2 units of *Taq* polymerase (Mdbio, Taipei). The thermocycling profile consisted of initial denaturation at  $94^{\circ}\text{C}$  for 2 min followed by 35 cycles of denaturation at  $94^{\circ}\text{C}$  for 30 s, annealing at  $48^{\circ}\text{C}$  for

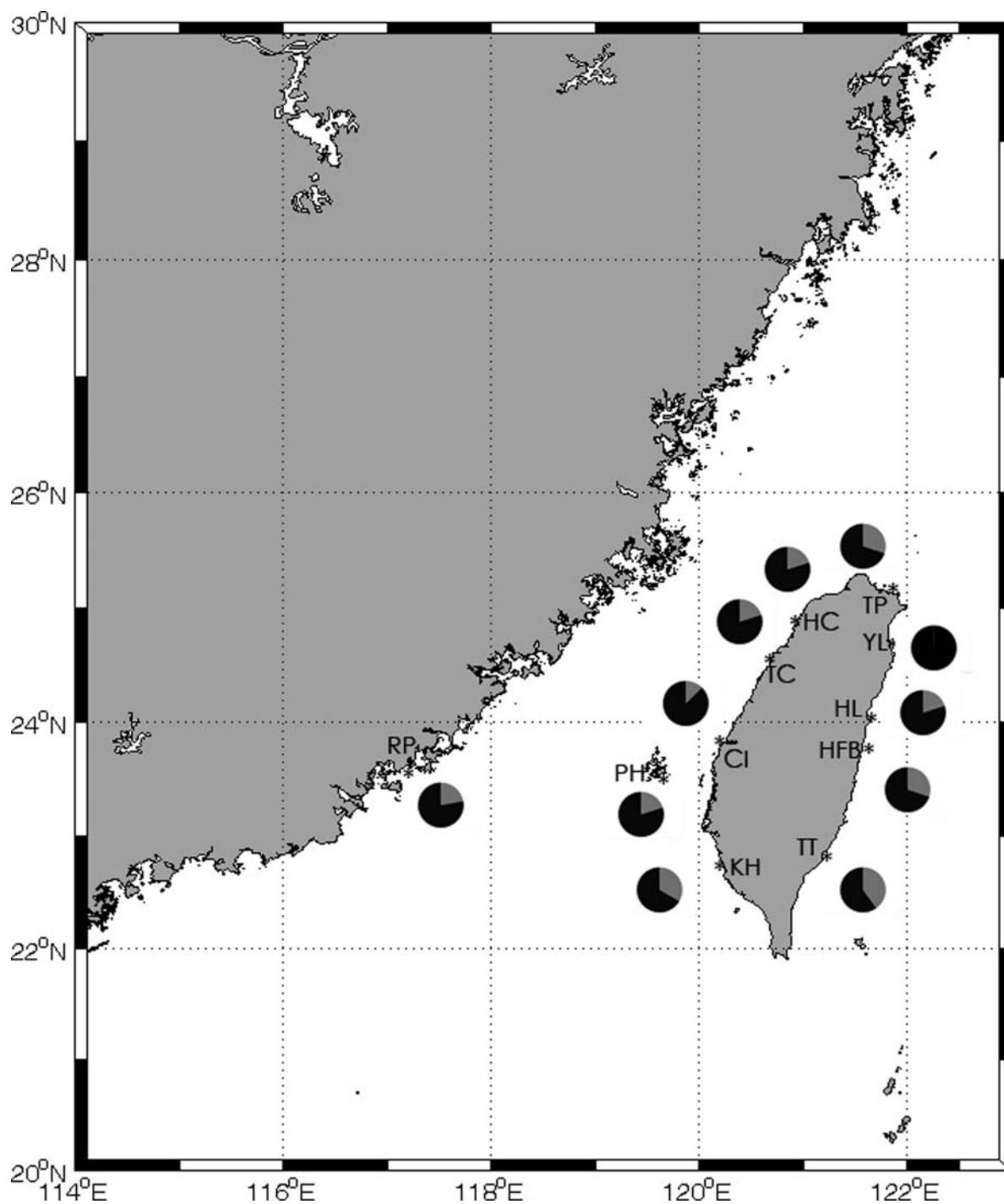


FIGURE 1. Locations sampled for *Terapon jarbua* in the coastal areas of Taiwan. Location codes are given in Table 1. Within the pie charts, black indicates the percentage of lineage A fish and gray the percentage of lineage B fish.

30 s, extension at 70°C for 40 s, and a final extension at 72°C for 2 min. The purification of PCR products and sequencing reactions was done by Genomics BioSci and Tech. Nucleotide sequences of forward and reverse strands were determined using an ABI 3730XL automated sequencer (Applied Biosystems, Carlsbad, California). Sequences were assembled and edited

using Sequencer version 4.2 software (Gene Codes, Ann Arbor, Michigan). The sequences obtained in this study were deposited in GenBank under accession numbers KP204162–KP204259 and KP152133–KP152230 for COI and *cyt b*, respectively. Sequences were aligned using CLUSTAL W (Thompson et al. 1994), followed by manual editing with

Sequencher 4.2 (Gene Codes). We concatenated the sequences of two loci for all individuals, and the analyses performed in this study were based on this data set. Arlequin 3.5 (Excoffier and Lischer 2010) was used to analyze genetic diversity indexes and index of population differentiation ( $\Phi_{st}$ ). Unique haplotypes were quantified and the genetic diversity of populations calculated. Analysis of molecular variance (AMOVA; Excoffier et al. 1992) was performed under two hypothetical groupings and the proportions of variations among regions ( $\Phi_{ct}$ ), among populations within regions ( $\Phi_{sc}$ ), and within populations ( $\Phi_{st}$ ) were estimated. One of the groupings was based on the difference in coastal habitats between Taiwan's west coast, which is primarily characterized by muddy or sandy bottoms (RP, KH, PH, HC, TC, CI and TP), and its east coast, which is mainly rocky or reef habitat (TT, HFB, HL and YL). Another grouping included these two areas but also considered a possible genetic break between China and Taiwan, caused by either the currents of the Taiwan Strait or the emergence of the continental shelf under the Taiwan Strait during the Pleistocene Epoch (Wang 1999). Therefore, in this latter grouping RP was separated from the west coast group. Median-joining parsimony analysis was done with NETWORK (Bandelt et al. 1999) on the nucleotide sequence matrix of the 96 concatenated sequences using the program's default settings.

The general time reversible model plus the gamma rate heterogeneity model (GTR+G) was selected by MEGA 6 (Tamura et al. 2013) as the best-fitting substitution model based on the Bayesian information criterion. Maximum likelihood tree searching was conducted in RAXML-HPC BlackBox under CIPRES Science Portal version 3.1. Sequences of closely related species (*T. theraps* and *T. puta*) were downloaded from GenBank for estimating interspecies Kimura two-parameter (K2P) genetic distance with MEGA 6 (Tamura et al. 2013).

Additionally, Bayesian phylogenetic reconstructions were created by Mr. Bayes 3.12 (Ronquist and Huelsenbeck 2003) with the K2P model and default priors. Subsequently, two duplicate runs of three heated and one cold Markov chain-Monte Carlo (MCMC) chains were established, and each was initiated from a random tree and run for 1,000,000 generations. The convergence diagnostic was applied and the stop probability was set to 0.01. Trees were then sampled every 100 generations and a consensus tree built for all trees with the exclusion of the first 25% of sampled trees to allow for sufficient burn-in.

**Historical demography and molecular dating.**—The significance of the *F*-statistics for population comparisons was assessed using 1,000 permutations. In addition, a pairwise mismatch distribution comprised of the pairwise differences among all haplotypes was performed for the historical demographic test of samples of the two major clades based on the deep divergence found in the phylogenetic and minimum-spanning trees. The distribution is usually multimodal when data comply with a demographic equilibrium. In contrast, a unimodal distribution may indicate a recent demographic expansion (Slatkin and Hudson 1991).

The software BEAST version 1.7.5 (Drummond and Rambaut 2007) was used to estimate the time to the most recent common ancestor (TMRCA) using an MCMC Bayesian approach. Divergence rates of approximately 2.0% and 1.2% per million years for *cyt b* and COI, respectively, were used to estimate the absolute TMRCA values (Horne et al. 2012; Taillebois et al. 2013). All analyses were performed using the GTR+G model of nucleotide substitution. Two independent MCMC chains were run for 100 million generations, with sampling every 10,000 generations and 10% burn-in of the posterior samples. The effective sampling size parameter was found to exceed 200, implying that there was acceptable mixing and sufficient sampling. The analysis was run five times to test the stability and convergence of the MCMC chains in plots of posterior log likelihoods in Tracer version 1.6 (Rambaut et al. 2014).

## RESULTS

A 1,753-bp concatenated sequence of mtDNA COI (612 bp) and *cyt b* (1,141 bp) was analyzed for 96 individuals obtained from 11 locations (Figure 1) in Taiwanese waters. The nucleotide composition was as follows: 24% adenine, 28.7% thymine, 31.6% cytosine, and 15.7% guanine. In total, 106 variable sites and 45 parsimoniously informative sites were found. Among the 96 individuals sequenced, 63 unique haplotypes were identified. Nucleotide diversity ( $\pi$ ) ranged from  $0.0013 \pm 0.0009$  (mean  $\pm$  SD) to  $0.0079 \pm 0.0045$ , and haplotype diversity (*h*) ranged from  $0.8571 \pm 0.1371$  to  $1.0000 \pm 0.0625$  among locations (Table 1).

The phylogenetic analysis revealed two clades among the 96 individuals, herein named lineage A and lineage B, both having strongly supporting values on the nodes (99 maximum likelihood, 0.99 Bayesian support; Figure 2). Both lineages were found at all locations except YL, where we observed only the lineage A haplotype. The general topology of the median-joining tree corresponded with the maximum likelihood tree, and the two lineages were separated by nine mutation steps. Lineage A showed star-like branches (Figure 3). Pairwise  $\theta$  estimates based on concatenated sequences ranged from  $-0.09184$  to  $0.17288$ , and only two comparisons (TC with HFB and TC with RP) showed marginally significant genetic structure (Table 2). The results of the AMOVA comparisons of genetic variation revealed that the variance was mainly from within the population level and that there was no significant genetic structure under these two groupings ( $P > 0.05$ ; Table 3). Mismatch distribution tests on lineage A and lineage B failed to reject the hypothesis of the sudden-expansion model (Figure 3). However, the topologies of the distributions differ, with lineage A being unimodal and lineage B being bimodal. The TMRCA of lineage A and lineage B analyzed using BEAST dated to 0.4305 million years ago (effective sampling size, 5,335.203; 95% credible interval, 0.3049–0.5687 million years ago). The average K2P genetic distance (only COI) among the three *Terapon* species was 0.3156,

TABLE 1. Sampling locations and diversity indices based on concatenated sequences (1,753 bp) in 11 populations of *Terapon jarbua* from Taiwanese waters. Abbreviations are as follows:  $N$  = sample size,  $h$  = haplotype diversity, and  $\pi$  = nucleotide diversity.

Code	Location	$N$	Cyt $b$	COI	$h$ (mean $\pm$ SD)	$\pi$ (mean $\pm$ SD)
TP	New Taipei City	10	10	10	$0.8889 \pm 0.0754$	$0.0049 \pm 0.0020$
YL	Yilan County	7	7	7	$0.8571 \pm 0.1371$	$0.0013 \pm 0.0009$
HL	Hua-lian City	8	8	8	$1.0000 \pm 0.0625$	$0.0037 \pm 0.0022$
HFB	Hua-lian County	10	10	10	$1.0000 \pm 0.0447$	$0.0065 \pm 0.0037$
TT	Tai-Tung County	10	10	10	$1.0000 \pm 0.0447$	$0.0065 \pm 0.0036$
KH	Kaohsiung County Taiwan	9	9	9	$1.0000 \pm 0.0524$	$0.0079 \pm 0.0045$
CI	Chiayi County	8	8	8	$0.9286 \pm 0.0844$	$0.0051 \pm 0.0030$
TC	Taichung County	5	5	5	$0.9000 \pm 0.1610$	$0.0063 \pm 0.0040$
HC	Hsinchu County	10	10	10	$0.9778 \pm 0.0540$	$0.0055 \pm 0.0031$
PH	Penghu County	10	10	10	$1.0000 \pm 0.0447$	$0.0056 \pm 0.0032$
RP	Guangdong, China	9	9	9	$0.9167 \pm 0.0920$	$0.0046 \pm 0.0027$
Total		96	96	96		

and the distance between lineage A and lineage B within *T. jarbua* was 0.007 (Table 4).

## DISCUSSION

### Genetic Diversity

High haplotype diversity ( $h = 0.86$ – $1$ ) and low nucleotide diversity ( $\pi = 0.0013$ – $1$ ) were found in the 11 populations of

*T. jarbua*. This phenomenon is commonly observed in marine fishes and has been interpreted as a sign of historical population expansion (Grant and Bowen 1998). The results of the mismatch distribution tests for lineages A and B also support the expansion model. Such results have been inferred to be closely related to population expansion after glaciation in several marine fishes (Tzeng 2007; Horne et al. 2008; Reece et al. 2010). In addition, lineage A showed a typical unimodal

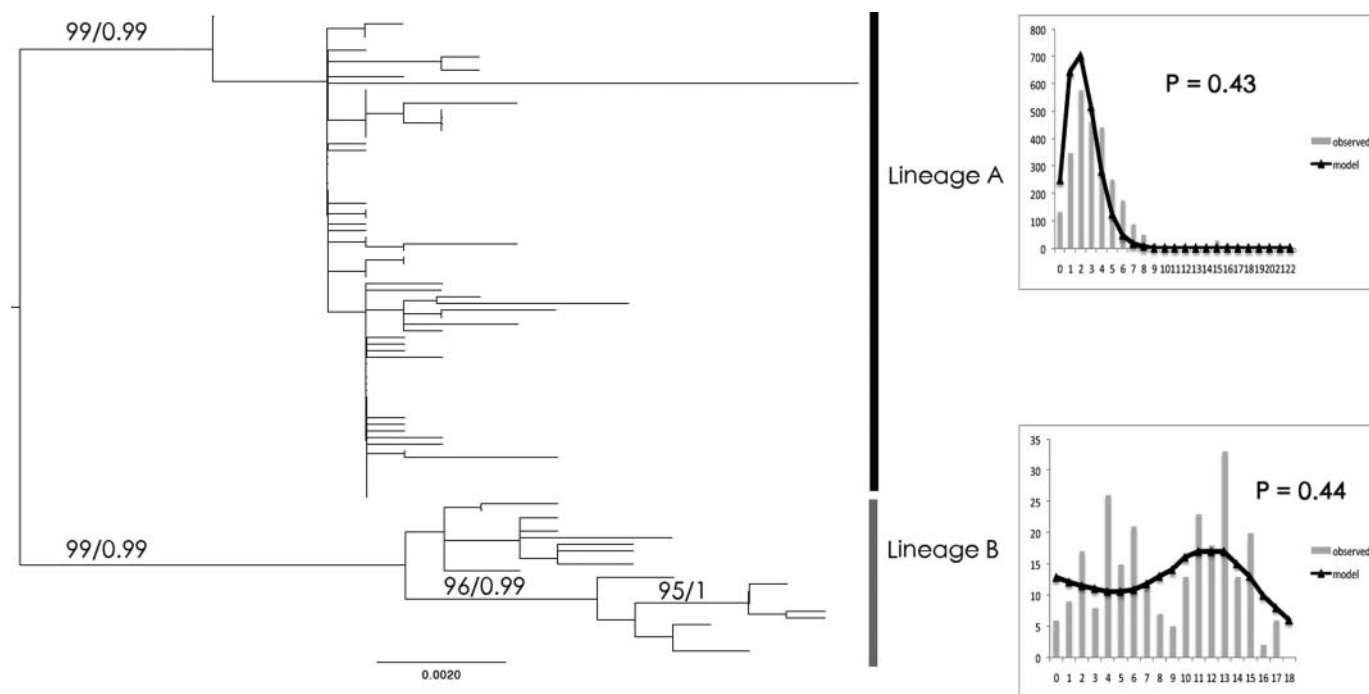


FIGURE 2. The left-hand panel shows the maximum likelihood phylogenetic trees for lineages A and B of *Terapon jarbua* based on 96 concatenated mitochondrial DNA sequences. Only nodes with bootstrap scores  $>55\%$  majority rule (for maximum likelihood) and  $>95\%$  majority probabilities (for Bayesian probability values) are presented. The right-hand panels show the mismatch distributions for the two lineages based on the same data set. In each panel, the black line is the expected curve under a constant population size and the gray bars indicate the observed frequencies of haplotype pairs with the number of pairwise differences.

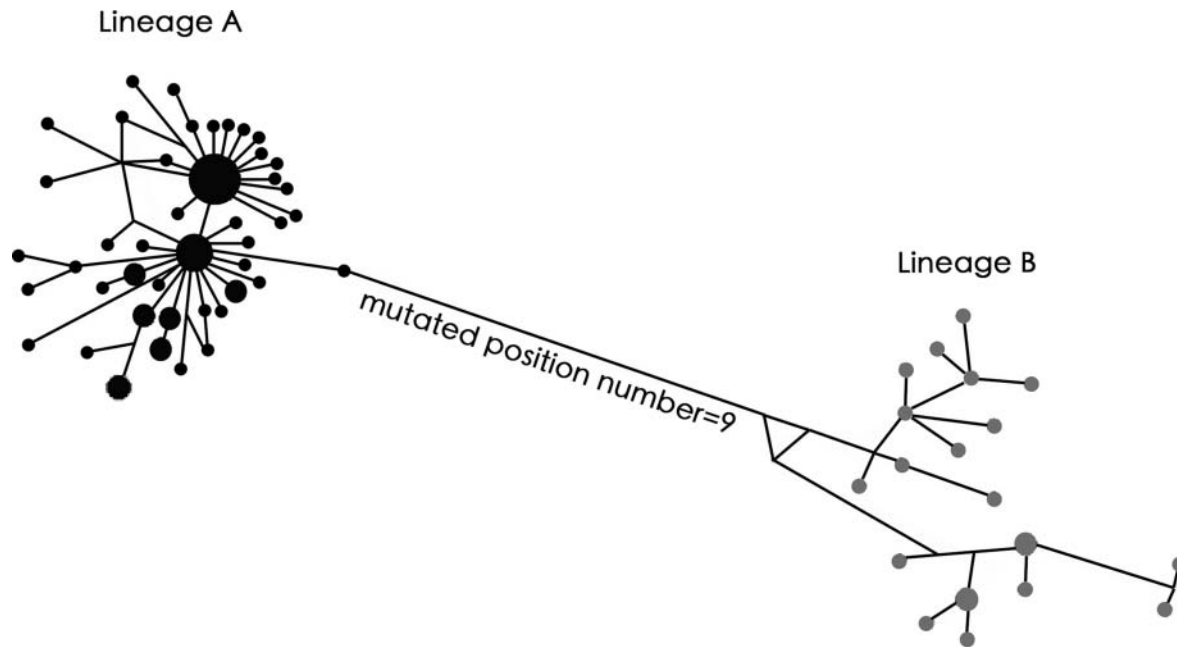


FIGURE 3. Median-joining network (Bandelt et al. 1999) for 96 concatenated sequences from *Terapon jarbua*. The size of each circle is proportional to the number of individuals with that haplotype; black circles represent lineage A fish and gray circles lineage B fish (see Figure 1).

distribution while lineage B showed a bimodal distribution, which can be interpreted as the populations' having gone through expanding and diminishing sizes and structured sizes, respectively (Excoffier and Schneider 1999). Historical population expansion is also supported by the median-joining network, which shows a bush-like pattern of haplotypes for lineage A.

### Population Genetic Structure

During the Pleistocene Epoch, several land bridges formed that enclosed the Sea of Japan, partially enclosed the South

China Sea, and partially or fully exposed the areas now occupied by the East China and Yellow Seas as a result of lower sea levels that had a great influence on surface currents (Ujiié et al. 1991; Wang 1999). In addition, current hydrodynamic regimes (such as deep-sea gaps along Taiwan and the Japanese Archipelago) may have had profound effects on the genetic divergence of marine populations (Kojima et al. 2006; Kawane et al. 2008). These changes in environmental and geographical regimes are suggested as the mechanism that influenced the population genetic structures of the fishes in the northwest Pacific (Liu et al. 2007; Hu et al. 2011; Shen et al. 2011). Owing to the influence of historical events, the

TABLE 2. Pairwise  $\theta$  estimates among *Terapon jarbua* populations based on concatenated mtDNA haplotype frequencies. The location codes are given in Table 1. Values in bold italics indicate  $P < 0.05$ .

Code	TP	YL	HL	HFB	TT	KH	CI	TC	HC	PH	RP
TP											
YL	-0.06026										
HL	-0.07653	-0.05435									
HFB	-0.04984	-0.03621	-0.04203								
TT	-0.08188	-0.03968	-0.06053	-0.09184							
KH	-0.05835	-0.0174	-0.03763	-0.05802	-0.0781						
CI	-0.04342	-0.01801	-0.02048	-0.01379	-0.01193	-0.03135					
TC	0.02836	0.02656	0.02565	<b>0.09856</b>	0.06344	0.08484	0.12017				
HC	-0.04959	-0.04346	-0.04044	-0.06323	-0.03142	0.0076	-0.02038	0.01428			
PH	-0.0787	-0.04351	-0.05018	-0.05778	-0.06578	-0.05868	-0.06978	0.05208	-0.04246		
RP	0.03506	-0.01888	-0.02105	-0.01745	-0.02602	-0.04141	-0.02345	<b>0.17288</b>	0.03284	-0.05845	

TABLE 3. Analysis of molecular variance (Schneider et al. 2000) based on concatenated mitochondrial DNA haplotype sequences according to two distinct models for the geographic partitioning of populations.

Comparison	df	% Total variance	$\Phi$ statistic
<b>East versus west versus China</b>			
Among groups	2	-1.89	$\Phi_{ct} = -0.01864$
Among populations within groups	8	-1.64	$\Phi_{sc} = -0.01613$
Within populations	85	103.51	$\Phi_{st} = -0.03508$
<b>East versus west + China</b>			
Among groups	1	-0.75	$\Phi_{ct} = -0.00754$
Among populations within groups	9	-2.41	$\Phi_{sc} = -0.02393$
Within populations	85	103.16	$\Phi_{st} = -0.03164$

population genetic structure of *T. jarbua* would be expected to exhibit distinct genetic lineages derived from sympatric individuals. Owing to the influence of hydrodynamic barriers, it should be closely associated with the distribution of populations. The present study shows that in Taiwanese waters *T. jarbua* is composed of two genetically divergent lineages. Based on haplotype distribution, we found no geographical gradient or separation across the 11 locations around Taiwan, including one from the coast of China. This result is also supported by AMOVA, which reveals no geographic structure among the 11 locations. Because the distributions of the two haplotype groups overlap, no geographic structure was observed. The genetic partition that we discovered in *T. jarbua* is unlikely to have been caused by current hydrodynamic regimes such as deep-sea gaps, more likely being due to historical events. A similar result was found in a genetic barcoding study of marine fishes in the South China Sea, with two genetically divergent clades (Zhang and Hanner 2012).

The population genetic structure of *T. jarbua* fits the historical scenario. Therefore, we suggest that these two distinct lineages formed in the marginal seas of the northwest Pacific (the Sea of Japan and the South China Sea) during periods of low sea level (Vorisi 2000), with the estimated TMRCA of lineages A and B being dated to 0.4305 million years ago. After the

end of glaciation, the two lineages may have recolonized the same waters around Taiwan and now coexist. However, given the broad distribution of this species, the historical events may have occurred elsewhere. Further studies with large-scale sampling of *T. jarbua* may provide more information regarding the history of genetic divergence.

### Species Boundary and Connectivity

The existence of cryptic lineages is common in marine environments (Knowlton 1993, 2000; Rocha and Bowen 2008). Such lineages often represent previously undiscernible species, and several new marine fish species have been described based on cryptic lineages discovered in phylogenetic studies (Drew et al. 2010; Liu et al. 2013). Intraspecific divergence is commonly observed across different taxa in the north-west Pacific, including fishes, crustaceans, and mollusks (review in Shen et al. 2011). However, the threshold for determining cryptic species varies depending on the taxon and genetic marker used. Although morphological characters are the major criteria for defining species, genetic distance matrices are commonly used to infer the level of differentiation (Baldwin et al. 2011; Liu et al. 2013). The genus *Terapon* is comprised of three valid species: *T. jarbua*, *T. puta*, and *T. theraps*. The genetic distance between lineages A and B did not exceed the average interspecies genetic distance for the genus. Therefore, we suggest that these two lineages diverged relatively recently and can be considered two genetic stocks of the same species. Recently, Lavergne et al. (2014) revealed the complex genetic structure of *T. jarbua* in the wider Gulf of Aden (in the range of tens of kilometers even without a geographic barrier between adjacent locations). In contrast to what we found in our study, connectivity is low there. The high genetic connectivity that we found around Taiwan is possibly due to the shared haplotype between localities as well as the mixed haplotypes of the two lineages at most locations. As it happens, two samples collected from the Gulf of Aden shared a unique COI haplotype that can also be found in the South China Sea (Lavergne et al. 2014). This suggests that the range of population expansion after glacial retreat was not restricted to the northwest Pacific but also extended into the Indian Ocean. Broad-scale sampling is needed to test this hypothesis and to understand the historical and contemporary population connectivity within the Indo-Pacific region.

### Stock Reassessment

During the past few decades, mtDNA has become the most effective molecule to use for assessing intraspecific genetic variation and genealogy. A well-known case is the European Anchovy *Engraulis encrasicolus*, in which extensive genetic variation was discovered among Mediterranean populations by means of mtDNA analysis (Magoulas et al. 1996, 2006). Based on these studies, the Mediterranean Sea, Bay of Biscay,

TABLE 4. *Terapon jarbua* K2P interspecies genetic distance matrix.

Species	<i>T. theraps</i>	<i>T. puta</i>	<i>T. jarbua</i> (lineage A)	<i>T. jarbua</i> (lineage B)
<i>T. theraps</i>				
<i>T. puta</i>	0.326			
<i>T. jarbua</i> (lineage A)	0.308	0.32		
<i>T. jarbua</i> (lineage B)	0.304	0.32	0.007	



and Senegal coastal waters (southeastern Atlantic) are characterized by the coexistence of two highly divergent mtDNA clades. This mixed-stock phenomenon is common in fishes across their distribution, which creates some difficulties in fisheries management (Cao et al. 2014). Genetic approaches allow the contributions of different populations to mixed-population fisheries to be inferred (Ruzzante et al. 2006). Even though these approaches have been heavily applied in the past decade to resolve intraspecific issues such as the genetic structure and phylogeography of marine organisms, genetic information has only been used to reassess life history traits between genetic stocks in a few cases (von der Heyden et al. 2014).

Recent studies have indicated that late in the year the population size of California coastal Chinook Salmon *Oncorhynchus tshawytscha* is larger than that of the Klamath River population (Satterthwaite et al. 2014). This indicates that there are two genetic stocks that act differently during their life span. The *Terapon jarbua* populations in Taiwanese waters have previously been considered to be a single stock, and several biological studies, including those of reproductive biology (Miu et al. 1990; Chang 2006), feeding behavior (Lin and Lee 1991), and growth (Wei 1995), have been conducted under this assumption. Therefore, the biological parameters of *T. jarbua* (such as growth rate, age at maturity, and fecundity) that have been based on the single-stock assumption should now be reexamined based on genetic stock information to eliminate the effects of mixing stocks.

## CONCLUSIONS

To summarize the present study, we found (1) that two genetically distinct stocks of *T. jarbua* (based on a concatenated sequence of COI and *cyt b*) occur sympatrically in Taiwanese waters, (2) that the average genetic distance between the two lineages is much lower than the average interspecies genetic distance for the genus *Terapon* (which indicates that the divergence between lineages was relatively recent), and (3) that reassessment of biological traits should be conducted based on the genetic information provided in this study. Further genetic studies with rangewide sampling using both mitochondrial and nuclear DNA markers may provide more information on the population genetic structure of this species.

## ACKNOWLEDGMENTS

We are grateful to the anonymous referees for their constructive comments. We thank Ming-Tai Chou, Zen-Wei Lin, Tzu-Wei Liu, and Chih-Hao Cheng for their assistance in sampling and Chien-Yao Lu for providing the specimens from Penghu, and we specially thank Buford Pruitt Jr. for English editing. This study was supported by grants to T.Y.L. from the Ministry of Science and Technology (NSC 102-2621-B-110-

001) and Asia-Pacific Ocean Research Center, National Sun Yat-Sen University. Shang-Yin Vanson Liu and I-Hsiang Huang contributed equally to this article.

## REFERENCES

- Allen, G. R., and M. V. Erdmann. 2012. Reef fishes of the East Indies, volumes I–III. Tropical Reef Research, Perth, Australia.
- Baldwin, C. C., C. I. Castillo, L. A. Weigt, and B. C. Victor. 2011. Seven new species within western Atlantic: *Starksia atlantica*, *S. lepicoelia*, and *S. slui-teri* (Teleostei, Labrisomidae), with comments on congruence of DNA barcodes and species. *ZooKeys* 79:21–72.
- Bandelt, H. J., P. Forster, and A. Röhl. 1999. Median-joining networks for inferring intraspecific phylogenies. *Molecular Biology and Evolution* 16:37–48.
- Begg, G. A., K. D. Friedland, and J. B. Pearce. 1999. Stock identification and its role in stock assessment and fisheries management: an overview. *Fisheries Research* 43:1–8.
- Begg, G. A., and J. R. Waldman. 1999. An holistic approach to fish stock identification. *Fisheries Research* 43:35–44.
- Cano, J. M., T. Shikano, A. Kuparinen, and J. Merila. 2008. Genetic differentiation, effective population size, and gene flow in marine fishes: implications for stock management. *Journal of Integrated Field Science* 5:1–10.
- Cao, J., S. B. Truesdell, and Y. Chen. 2014. Impacts of seasonal stock mixing on the assessment of Atlantic Cod in the Gulf of Maine. *ICES Journal of Marine Science* 71:1443–1457.
- Chang, C. W., Y. T. Wang, and W. N. Tzeng. 2010. Morphological study on vertebral deformity of the Thornfish *Terapon jarbua* in the thermal effluent outlet of a nuclear power plant in Taiwan. *Journal of the Fisheries Society of Taiwan* 37:1–11.
- Chang, L. M. 2006. Reproductive biology of Thornfish, *Terapon jarbua*, from the surrounding waters off southwestern Taiwan. Master's thesis. National Taiwan Ocean University, Keelung, Taiwan.
- Cutarelli, A., M. G. Amoroso, A. De Roma, S. Girardi, G. Galiero, A. Guarino, and F. Corrado. 2014. Italian market fish species identification and commercial frauds revealing by DNA sequencing. *Food Control* 37:46–50.
- Davis, A. M., P. J. Unmack, B. J. Pusey, J. B. Johnson, and R. G. Pearson. 2012. Marine–freshwater transitions are associated with the evolution of dietary diversification in terapontid grunners (Teleostei: Terapontidae). *Journal of Evolutionary Biology* 25:1163–1179.
- Drew, J. A., G. R. Allen, and M. V. Erdmann. 2010. Congruence between mitochondrial genes and color morphs in a coral reef fish: population variability in the Indo-Pacific damselfish *Chrysiptera rex* (Snyder, 1909). *Coral Reefs* 29:439–444.
- Drummond, A. J., and A. Rambaut. 2007. BEAST: Bayesian evolutionary analysis by sampling trees. *BMC Evolutionary Biology* [online serial] 7:214.
- Excoffier, L., and H. L. Lischer. 2010. Arlequin suite ver 3.5: a new series of programs to perform population genetics analyses under Linux and Windows. *Molecular Ecology Resources* 10:564–567.
- Excoffier, L., and S. Schneider. 1999. Why hunter–gatherer populations do not show signs of Pleistocene demographic expansions. *Proceedings of National Academy of Sciences of the USA* 96:10597–10602.
- Excoffier, L., P. E. Smouse, and J. M. Quattro. 1992. Analysis of molecular variance inferred from metric distance among DNA haplotypes: application to human mitochondrial DNA restriction data. *Genetics* 131:479–491.
- Grant, W., and B. Bowen. 1998. Shallow population histories in deep evolutionary lineages of marine fishes: insights from sardines and anchovies and lessons for conservation. *Journal of Heredity* 89:415–426.
- Horne, J. B., L. van Herwerden, J. H. Choat, and D. R. Robertson. 2008. High population connectivity across the Indo-Pacific: congruent lack of phylogeographic structure in three reef fish congeners. *Molecular Phylogenetics and Evolution* 49:629–638.

- Horne, J. B., P. Momigliano, D. J. Welch, S. J. Newman, and L. van Herwerden. 2012. Searching for common threads in threadfins: phylogeography of Australian polynemids in space and time. *Marine Ecology Progress Series* 449:263–276.
- Hu, Z. M., S. Uwai, S. H. Yu, T. Komatsu, T. Ajisaka, and D. L. Duan. 2011. Phylogeographic heterogeneity of the brown macroalga *Sargassum horneri* (Fucaceae) in the northwestern Pacific in relation to late Pleistocene glaciation and tectonic configurations. *Molecular Ecology* 20:3894–3909.
- Jackson, B. C. J., M. X. Kirby, W. H. Berger, K. A. Bjorndal, L. W. Botsford, B. J. Bourque, R. H. Bradbury, R. Cooke, J. Erlandson, J. A. Estes, T. P. Hughes, S. Kidwell, C. B. Lange, H. S. Lenihan, J. M. Pandolfi, C. H. Peterson, R. S. Steneck, M. J. Tegner, and R. R. Warner. 2001. Historical overfishing and the recent collapse of coastal ecosystems. *Science* 293: 629–638.
- Kawane, M., K. Wada, and K. Watanabe. 2008. Comparisons of genetic population structures in four intertidal brachyuran species of contrasting habitat characteristics. *Marine Biology* 156:193–203.
- Knowlton, N. 1993. Sibling species in the sea. *Annual Review of Ecology and Systematics* 24:189–216.
- Knowlton, N. 2000. Molecular genetic analyses of species boundaries in the sea. *Hydrobiologia* 420:73–90.
- Kojima, S., S. Kamimura, A. Iijima, T. Kimura, T. Kurozumi, and T. Furota. 2006. Molecular phylogeny and population structure of tideland snails in the genus *Cerithidea* around Japan. *Marine Biology* 149:525–535.
- Lavergne, E. 2012. Estuarine fish biodiversity of Socotra Island (northwestern Indian Ocean): from the community to the functioning of *Terapon jarbua* populations. Doctoral dissertation. University of Western Brittany, Brest, France.
- Lavergne, E., I. Calvès, A. L. Meistertzheim, G. Charrier, U. Zajonz, and J. Laroche. 2014. Complex genetic structure of a euryhaline marine fish in temporarily open/closed estuaries from the wider Gulf of Aden. *Marine Biology* 161:1113–1126.
- Lim, H. C., A. T. Ahmad, A. A. Nuruddin, and S. A. Mohd Nor. In press. Cytochrome *b* gene reveals panmixia among Japanese Threadfin Bream, *Nemipterus japonicus* (Bloch, 1791), populations along the coasts of peninsular Malaysia and provides evidence of a cryptic species. *Mitochondrial DNA*. DOI: 10.3109/19401736.2014.883602.
- Lin, K., and S. C. Lee. 1991. Feeding habits of the Thornfish, *Terapon Jarbua* (Forsk.) from the estuary of Tanshui River and its adjacent waters. *Journal of the Fisheries Society of Taiwan* 18:257–264.
- Liu, J. X., T. X. Gao, S. F. Wu, and Y. P. Zhang. 2007. Pleistocene isolation in the northwestern Pacific marginal seas and limited dispersal in a marine fish, *Chelon haematocheilus* (Temminck and Schlegel, 1845). *Molecular Ecology* 16:275–288.
- Liu, S. Y. V., C. L. C. Chan, O. Lin, C. S. Hu, and C. A. Chen. 2013. DNA Barcoding of shark meats identify species composition and CITES-listed species from the markets in Taiwan. *PLoS (Public Library of Science) ONE* [online serial] 8:e79373.
- Liu, S. Y. V., H. C. H. Ho, and C. F. Dai. 2013. A new species of *Pomacentrus* (Actinopterygii: Pomacentridae) from Micronesia, with comments on its phylogenetic relationships. *Zoological Studies* 52:1–8.
- Magoulas, A., R. Castilho, S. Caetano, S. Marcato, and T. Patamello. 2006. Mitochondrial DNA reveals a mosaic pattern of phylogeographical structure in Atlantic and Mediterranean populations of anchovy (*Engraulis encrasicolus*). *Molecular Phylogenetics and Evolution* 39:734–746.
- Magoulas, A., N. Tsimenides, and E. Zouros. 1996. Mitochondrial DNA phylogeny and the reconstruction of the population history of a species: the case of the European Anchovy (*Engraulis encrasicolus*). *Molecular Biology and Evolution* 13:178–190.
- Miu, T. C., S. C. Lee, and W. N. Tzeng. 1990. Reproductive biology of *Terapon jarbua* from the estuary of Tamshui River. *Journal of the Fisheries Society of Taiwan* 17:9–20.
- Rambaut, A., M. A. Suchard, D. Xie, and A. J. Drummond. 2014. Tracer version 1.6. Available: <http://beast.bio.ed.ac.uk/Tracer>. (July 2014).
- Reece, J. S., B. W. Bowen, K. Joshi, V. Goz, and A. Larson. 2010. Phylogeography of two moray eels indicates high dispersal throughout the Indo-Pacific. *Journal of Heredity* 101:391–402.
- Rocha, L. A., and B. W. Bowen. 2008. Speciation in coral reef fishes. *Journal of Fish Biology* 72:1101–1121.
- Ronquist, F., and J. P. Huelsenbeck. 2003. MrBayes 3: Bayesian phylogenetic inference under mixed models. *Bioinformatics* 19:1572–1574.
- Russell, E. S. 1931. Some theoretical considerations on the “overfishing” problem. *Journal de Conseil International pour l’Exploration de la Mer* 6:3–20.
- Ruzzante, D. E., S. Mariani, D. Bekkevold, C. André, H. Mosegaard, L. A. W. Clausen, T. G. Dahlgren, W. F. Hutchinson, E. M. C. Hatfield, E. Torstensen, J. Brigham, E. J. Simmonds, L. Laikre, L. C. Larsson, R. J. M. Stet, N. Ryman, and G. R. Carvalho. 2006. Biocomplexity in a highly migratory pelagic marine fish, Atlantic Herring. *Proceedings of the Royal Society of London B* 273:1459–1464.
- Satterthwaite, W. H., M. S. Mohr, M. R. O’Farrell, E. C. Anderson, M. A. Banks, S. J. Bates, M. R. Bellinger, L. A. Bergeron, E. D. Crandall, J. C. Garza, B. J. Kormos, P. W. Lawson, and M. J. Palmer-Zwahlen. 2014. Use of genetic stock identification data for comparison of the ocean spatial distribution, size at age, and fishery exposure of an untagged stock and its indicator: California coastal versus Klamath River Chinook Salmon. *Transactions of American Fisheries Society* 143:117–133.
- Schneider, S., D. Roessli, and L. Excoffier. 2000. Arlequin: a software for population genetics data analysis user manual ver 2.000. University of Geneva, Geneva, Switzerland.
- Shen, K. N., B. W. Jamandre, C. C. Hsu, W. N. Tzeng, and J. D. Durand. 2011. Plio-Pleistocene sea level and temperature fluctuations in the northwestern Pacific promoted speciation in the globally distributed Flathead Mullet *Mugil cephalus*. *BMC Evolutionary Biology* [online serial] 11:83.
- Singh, N. S., B. K. Behera, S. P. Kunal, P. Das, P. Paria, and A. P. Sharma. In press. Genetic stock structure of *Osteobrama belangeri* (Valenciennes, 1844) in the Indian region. *Mitochondrial DNA*. DOI: 10.3109/19401736.2014.883602.
- Slatkin, M., and R. R. Hudson. 1991. Pairwise comparisons of mitochondrial DNA sequences in stable and exponentially growing populations. *Genetics* 129:555–562.
- Storfer, A., M. A. Murphy, J. S. Evans, C. S. Goldberg, S. Robinson, S. F. Spear, R. Dezzani, E. Delmelle, L. Vierling, and L. P. Waits. 2007. Putting the “landscape” in landscape genetics. *Heredity* 98:128–142.
- Swearer, S. E., J. S. Shima, M. E. Hellberg, S. R. Thorrold, G. P. Jones, D. R. Robertson, S. G. Morgan, K. A. Selkoe, G. M. Ruiz, and R. R. Warner. 2002. Evidence of self-recruitment in demersal marine populations. *Bulletin of Marine Science* 70:251–271.
- Taillebois, L., M. Castelin, J. R. Ovenden, C. Bonillo, and P. Keith. 2013. Contrasting genetic structure among populations of two amphidromous fish species (Sicydiinae) in the central West Pacific. *PLoS (Public Library of Science) One* [online serial] 8:e75465.
- Tamura, K., G. Stecher, D. Peterson, A. Filipski, and S. Kumar. 2013. MEGA6: molecular evolutionary genetics analysis, version 6.0. *Molecular Biology and Evolution* 30:2725–2729.
- Thompson, J. D., D. G. Higgins, and T. J. Gibson. 1994. CLUSTAL W: improving the sensitivity of progressive multiple sequence alignments through sequence weighting, position-specific gap penalties, and weight matrix choice. *Nucleic Acids Research* 22:4679–4680.
- Tzeng, T. D. 2007. Population structure and historical demography of the Spotted Mackerel (*Scomber australasicus*) off Taiwan inferred from mitochondrial control region sequencing. *Zoological Studies* 46:656–663.
- Ujiié, H., Y. Tanaka, and T. Ono. 1991. Late Quaternary paleoceanographic record from the middle Ryukyu Trench slope, northwest Pacific. *Marine Micropaleontology* 18:115–128.
- Vari, R. P. 2001. Teraponidae. Pages 3305–3316 in K. E. Carpenter and V. H. Niem, editors. *FAO species identification guide for fisheries purposes: the living marine resources of the western central Pacific, volume 5. Food and Agriculture Organization of the United Nations, Rome.*

- Viñas, J., N. Sanz, L. Peñarrubia, R.-M. Araguas, J.-L. García-Marín, M.-I. Roldán, and C. Pla. 2014. Genetic population structure of European Anchovy in the Mediterranean Sea and the northeast Atlantic Ocean using sequence analysis of the mitochondrial DNA control region. *ICES Journal of Marine Science* 71:391–397.
- von der Heyden, S., M. Beger, R. J. Toonen, L. van Herwerden, M. A. Juinio-Meñez, R. Ravago-Gotanco, C. Fauvelot, and G. Bernardi. 2014. The application of genetics to marine management and conservation: examples from the Indo-Pacific. *Bulletin of Marine Science* 90:123–158.
- Voris, H. K. 2000. Maps of Pleistocene sea levels in Southeast Asia: shorelines, river systems, and time durations. *Journal of Biogeography* 27:1153–1167.
- Wang, D. Y., and B. Q. Huang. 1995. Hematological effects of detergent LAS toxicity in young Thornfish, *Terapon jarbua*. *Journal of the Fisheries Society of Taiwan* 22:163–168.
- Wang, P. X. 1999. Response of western Pacific marginal seas to glacial cycles: paleo-oceanographic and sedimentological features. *Marine Geology* 156:5–39.
- Ward, R. D., T. S. Zemlak, B. H. Innes, P. R. Last, and P. D. N. Hebert. 2005. DNA barcoding Australia's fish species. *Philosophical Transactions of the Royal Society of London B* 360:1847–1857.
- Wei, X. B. 1995. Daily age and growth of Thornfish (*Terapon jarbua* Forsskal) in the coastal waters of northern Taiwan as revealed from otolith daily growth increment. Master's thesis. National Taiwan University, Taipei.
- Worm, B., E. B. Barbier, N. Beaumont, J. Emmett Duffy, C. Folke, B. S. Halpern, J. B. C. Jackson, H. K. Lotze, F. Micheli, S. R. Palumbi, E. Sala, K. A. Selkoe, J. J. Stachowicz, and R. Watson. 2006. Impacts of biodiversity loss on ocean ecosystem services. *Science* 314:787–790.
- Wu, Z. C., Q. H. Xu, J. F. Zhu, X. J. Dai, and L. X. Xu. 2014. Genetic population structure of the Bigeye Tuna *Thunnus obesus* in the central Pacific Ocean based on mtDNA *Cytb* sequences. *Fisheries Science* 80:415–426.
- Zhang, J., and R. Hanner. 2012. Molecular approach to the identification of fish in the South China Sea. *PLoS (Public Library of Science) ONE* [online serial] 7:e30621.