



## **Study on the Genetic Differentiation of Geographic Populations of *Calliptamus italicus* (Orthoptera: Acrididae) in Sino-Kazakh Border Areas Based on Mitochondrial COI and COII Genes**

Authors: Xu, Ye, Mai, Ji-wei, Yu, Bing-jie, Hu, Hong-xia, Yuan, Liang, et al.

Source: Journal of Economic Entomology, 112(4) : 1912-1919

Published By: Entomological Society of America

URL: <https://doi.org/10.1093/jee/toz112>

---

BioOne Complete ([complete.BioOne.org](https://complete.BioOne.org)) is a full-text database of 200 subscribed and open-access titles in the biological, ecological, and environmental sciences published by nonprofit societies, associations, museums, institutions, and presses.

Your use of this PDF, the BioOne Complete website, and all posted and associated content indicates your acceptance of BioOne's Terms of Use, available at [www.bioone.org/terms-of-use](https://www.bioone.org/terms-of-use).

Usage of BioOne Complete content is strictly limited to personal, educational, and non - commercial use. Commercial inquiries or rights and permissions requests should be directed to the individual publisher as copyright holder.

---

BioOne sees sustainable scholarly publishing as an inherently collaborative enterprise connecting authors, nonprofit publishers, academic institutions, research libraries, and research funders in the common goal of maximizing access to critical research.

# Study on the Genetic Differentiation of Geographic Populations of *Calliptamus italicus* (Orthoptera: Acrididae) in Sino-Kazakh Border Areas Based on Mitochondrial *COI* and *COII* Genes

Ye Xu,<sup>1</sup> Ji-wei Mai,<sup>2</sup> Bing-jie Yu,<sup>1,\*</sup> Hong-xia Hu,<sup>1</sup> Liang Yuan,<sup>1</sup> Roman Jashenko,<sup>3</sup> and Rong Ji<sup>1,4</sup>

<sup>1</sup>International Research Center for the Collaborative Containment of Cross-Border Pests in Central Asia, Xinjiang Key Laboratory of Special Species Conservation and Regulatory Biology, College of Life Sciences, Xinjiang Normal University, Urumqi 830054, China, <sup>2</sup>School of Life Sciences, Lanzhou University, Lanzhou 730000, China, <sup>3</sup>Al-Farabi Kazakh National University, Almaty 480078, Kazakhstan, and <sup>4</sup>Corresponding author, e-mail: [jirong@xjnu.edu.cn](mailto:jirong@xjnu.edu.cn)

Subject Editor: Brian Rector

Received 7 January 2019; Editorial decision 8 April 2019

## Abstract

*Calliptamus italicus* L. is an important pest on the desert and semidesert steppes along the Sino-Kazakh border. To elucidate the molecular mechanism of its continuous outbreaks, we studied 11 different geographic populations of *C. italicus* to determine: 1) the complete sequences of the entire mitochondrial cytochrome oxidase subunit I (*COI*) and mitochondrial cytochrome oxidase subunit II (*COII*) genes, and 2) performed genetic diversity, differentiation, gene flow, and molecular variation analyses. Of the 11 populations, the Yining County (YNX) population had the highest haplotype diversity and *Pi* values. There are significant differences in Tajima's *D* and Fu's *Fs* ( $P < 0.05$ ). The fixation index *Fst* values of the total *C. italicus* population were 0.03352, and its gene flow *Nm* values of the total *C. italicus* population were 15.32. Taken together, there were five main findings: 1) the current genetic differentiation of *C. italicus* arose within populations; 2) genetic exchange levels were high between geographical populations; 3) genetic variation level was low; 4) *C. italicus* populations likely expanded in recently, and 5) there was no significant correlation between genetic distance and geographic distance for any geographic population. Findings from this study indicate that frequent gene exchange between populations may enhance the adaptability of *C. italicus* along the Sino-Kazakh border, leading to frequent outbreaks.

**Key words:** *Calliptamus italicus* L., *mt COI*, *mt COII*, Sino-Kazakh border areas, the Central Asia region

*Calliptamus italicus* L., commonly known as the Italian locust, belongs to *Calliptamus* Servill and is widely distributed in Eurasia and North Africa (Sergeev 1992, Stolyarov 2000, Sergeev and Van'kova 2008, Darvishzadeh and Bandani 2012). In China, it is mainly distributed on the desert and semidesert steppes of Qinghai and Northern Xinjiang (Chen 2000). *Calliptamus italicus* has high fecundity and is a polyphagous species with strong dispersal capacity. In recent years, there have been continuous *C. italicus* outbreaks along the Sino-Kazakh border, and *C. italicus* has become a dominant species in some regions. Previous work has shown that serious outbreaks of *C. italicus* are related to regional climate conditions (Li et al. 2017). In pests, the propensity to outbreak may itself play a major role in intensifying gene flow and homogenizing genetic variation (Chapuis et al. 2008, 2009). Given the frequent gene exchange among different populations, it is speculated that enhanced

adaptability also leads to continuous outbreaks. We also speculated that the frequent outbreaks of *C. italicus* are related to their genetic diversity and population demography, and thus high population admixture (Chapuis et al. 2011). To verify the above assumption, we used mitochondrial DNA sequences to investigate the genetic structures and gene flow between 11 geographic populations of *C. italicus* in regions that experience frequent outbreaks. The study was designed to quantify genetic diversity and degrees of genetic differentiation of different geographic populations, which may provide a scientific basis for forecasting future outbreaks.

In this study, we selected two mitochondrial genes, cytochrome oxidase subunit I (*COI*) and cytochrome oxidase subunit II (*COII*), to examine between-population differences. Like all mitochondrial DNA, these genes have high copy numbers and, crucially, rapid evolutionary rates (Gyllensten et al. 1991, Rollins et al. 2011). As

such, they are highly suitable for studying intraspecies genetic differences and have been used widely to study geographic populations of insects (Salvato et al. 2002, Meng et al. 2008, Seabra et al. 2015, Sekiné et al. 2017, Wu and Yan 2018). Studying genetic variation between pest populations cannot only provide information about the population structure of the species in different geographical regions, but also infer the demographic history of pests (Assefa et al. 2006, 2015, 2017). Our main objectives were to 1) analyze the genetic structure and phylogeography of *C. italicus* populations along steppes of the Sino-Kazakh border, 2) examine the geographical pattern of *C. italicus* genetic diversity and haplotypes, and 3) infer the demographic history of this species. Understanding the variation in *COI* and *COII* gene offers a potential scientific basis to monitor and control this pest species.

## Materials and Methods

### Insect Specimen Collection

In total, 220 individuals of *C. italicus* adults from 11 different geographic populations were collected in Sino-Kazakh border areas during a serious outbreak period in June to August 2017 and 2018 (Table 1). The collection sites covered longitude: 79°17'~93°38', latitude: 43°20'~48°10', altitudes 470~2,030 m, and desert and semidesert steppe, subalpine steppe habitat types of the Sino-Kazakh border areas (Fig. 1). The 11 collection sites were separated by a minimum distance of 47 km and a maximum distance of 1,160 km. Samples were collected randomly, immediately frozen with liquid nitrogen, and stored at -80°C. *Calliptamus italicus* collected in Kazakhstan was stored in a 1.5-ml centrifugal tube containing anhydrous ethanol for a short period before freezing.

### DNA Extraction and Amplification

Hind femoral muscles were collected from each individual and ground into powder with liquid nitrogen. Ezup Column Animal Genomic DNA Purification Kit (Sangon Biotech, Shanghai, China) was used to extract whole-genome DNA, following the manufacturer's protocol. The concentration and purity of the extracted DNA was determined via agarose gel electrophoresis and UV/VIS spectrophotometer (NanoDropND-2000). Primers designed by using primer 5.0 software (<http://www.premierbiosoft.com>). Primers for mitochondrial *COI* (F: 5'-CTAGAATTGCAGTC TAGAATCAT-3', R: 5'-AGTGGTGAAGCTCCATCTTGTAATG-3') and *COII* (F: 5'-TCTAGATTCTAATATGGCAG-3', R: 5'-CAATA CTTACTTTTCAGTCATC-3') were used for this study. Polymerase chain reactions (PCR) were performed using a gradient thermal cycler (MastercyclerProS, Germany) at a total volume of 25 µl,

containing 12.5 µl 2×Taq PCR MasterMix (TIANGEN, Beijing, China), 0.25 µM of both F and R primers, and 1.5 µl genomic DNA (10~30 ng/µl). PCR amplification was conducted at 94°C for 3 min, followed by 30 amplification cycles of 94°C for 30 s, primer-specific annealing temperature of 60°C (*COI*) or 46.9°C (*COII*) for 30 s, 72°C for 80 s, and then a final step at 72°C for 5 min. Amplified products were purified and sequenced by Chengdu TsingkeZixi Biological Technology Co., Ltd.

### Statistical Analysis

*COI* (1540 bp) and *COII* (684 bp) sequences of *C. italicus* were obtained. Chromas software (Staden 1996) was used to read sequencing results and observe peak values, and the DNASTar software package was used for sequence editing and correction. After confirming that the sequences belonged to *C. italicus* using BLAST on the NCBI database, DNAMAN software was used to conduct multiple sequence alignment. Multiple sequences of *COI* and *COII* were concatenated to yield a total length of 2224 bp. The haplotype network of *C. italicus* was analyzed using a median-joining algorithm in PopART (Leigh and Bryant 2015). DnaSP 5.0 (Rozas et al. 2003) was used to analyze number of haplotypes (H), haplotype diversity (*Hd*), nucleotide diversity (*Pi*), number of polymorphic sites (S), fixation index (*Fst*), gene flow (*N<sub>m</sub>*), Tajima's *D* (*D*) (Tajima 1989), and Fu's *F* statistics (*F<sub>s</sub>*) (Fu 1997) in each of the populations. We assessed significance with 1,000 permutations. To examine demographic history, the distribution of pairwise differences between individual sequences was analyzed by mismatch distribution analysis using DnaSP 5.0 (Rozas et al. 2003). Analysis of molecular variance (AMOVA) of the genetic sequences was performed using Arlequin 3.5 (Schneider et al. 2000). The pairwise genetic distances were calculated by MEGA6.0 (Tamura et al. 2013) using the Kimura-2-parameter model (Kimura 1980). We also calculated the geographic distances among various collection sites based on longitude and latitude, and tested the correlation between genetic distance and geographic distance (Mantel 1967) for different populations using TFPGA (Miller 1997) with 9,999 randomizations.

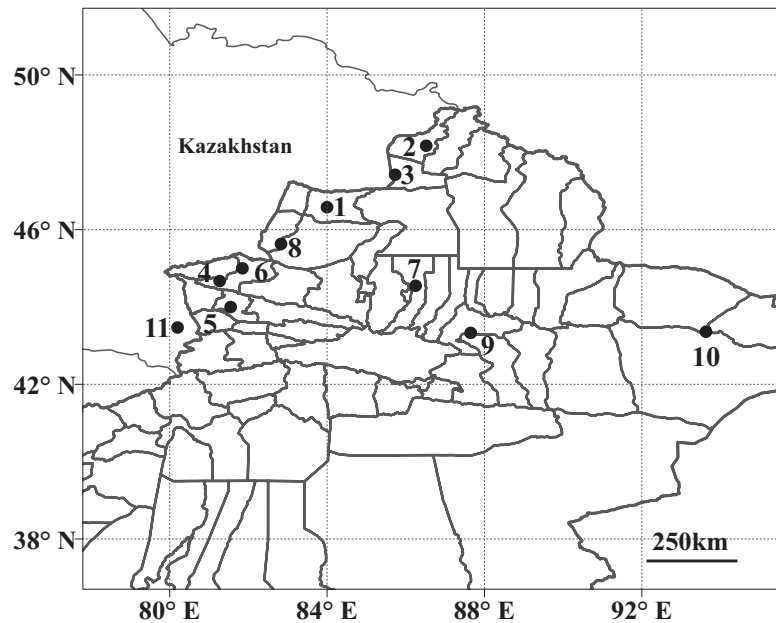
## Results

### Analysis of Haplotype, Nucleotide Diversity, Neutrality Test, and Mismatch Distribution of *COI* and *COII* Genes

The haplotype diversity of the concatenated sequences ranged from 0.889 to 0.989 with an average of 0.948, whereas the nucleotide diversity ranged from 0.00087 to 0.00184 with an average of 0.00141 (Table 2). The YNX population had the highest haplotype diversity

**Table 1.** Specimen date of difference geographic populations of *C. italicus* in Sino-Kazakh border areas

Population code	Number of specimens	Collecting locality	Longitude(E)	Latitude(N)	Elevation(m)
TC	20	Tacheng, Xinjiang	83°60'	46°35'	470
HBH	20	Habahe, Xinjiang	86°31'	48°10'	680
JMN	20	Jimunai, Xinjiang	85°44'	47°25'	1070
YNS	20	Yiningshi, Xinjiang	81°16'	44°40'	1030
YNX	20	Yiningxian, Xinjiang	81°33'	44°00'	1020
BL	20	Bole, Xinjiang	81°58'	45°60'	1010
MNS	20	Manasi, Xinjiang	86°15'	43°93'	1292
YM	20	Yumin, Xinjiang	82°50'	45°38'	1850
NS	20	Nanshan, Xinjiang	87°39'	43°20'	1930
BLK	20	Balikun, Xinjiang	93°38'	43°22'	2030
KZ	20	Altyn-Emel, Kazakhstan	80°20'	43°47'	500



**Fig. 1.** Distribution map of 11 *C. italicus* populations collected across the major distributing regions in Sino-Kazakh border areas. 1 Tacheng (TC) 83°60'E, 46°35'N; 2 Habahe (HBH) 86°31'E, 48°10'N; 3 Jimunai (JMN) 85°44'E, 47°25'N; 4 Yningshi (YNS) 81°16'E, 44°40'N; 5 Yningxian (YNX) 81°33'E, 44°00'N; 6 Bole (BL) 81°58'E, 45°60'N; 7 Manasi (MNS) 86°15'E, 43°93'N; 8 Yumin (YM) 82°50'E, 45°38'N; 9 Nanshan (NS) 87°39'E, 43°20'N; 10 Balikun (BLK) 93°38'E, 43°22'N; 11 Kazakhstan Altyn-Emel (KZ) 80°20'E, 43°47'N.

**Table 2.** Parameters of genetic diversity and the neutral test based on mitochondrial sequence data of 11 populations of *C. italicus*

Population code	Combined gene					
	S	Hd	Pi	H	D	Fs
TC	32	0.985	0.00160	19	-2.3877 ( $P = 0.0000$ )	-23.5307***
HBH	18	0.958	0.00113	15	-1.8928 ( $P = 0.0170$ )	-26.5190***
JMN	21	0.916	0.00117	14	-2.1366 ( $P = 0.0060$ )	-26.3732***
YNS	24	0.963	0.00147	16	-1.9972 ( $P = 0.0130$ )	-24.5072***
YNX	36	0.989	0.00184	18	-2.3634 ( $P = 0.0020$ )	-21.7845***
BL	19	0.911	0.00116	13	-1.9644 ( $P = 0.0130$ )	-26.4280***
MNS	15	0.889	0.00087	14	-1.9998 ( $P = 0.0080$ )	-27.2229***
YM	29	0.984	0.00156	18	-2.2490 ( $P = 0.0020$ )	-23.7821***
NS	20	0.963	0.00141	13	-1.6819 ( $P = 0.0250$ )	-24.9186***
BLK	21	0.932	0.00162	13	-1.4987 ( $P = 0.0550$ )	-23.3707***
KZ	32	0.942	0.00172	15	-2.2706 ( $P = 0.0020$ )	-22.6444***
Total	152	0.965	0.00146	128	-2.7221 ( $P = 0.0000$ )	-25.9968***

This table includes population code, number of polymorphic sites (S), Haplotype diversity (Hd), Nucleotide diversity (Pi), number of haplotypes (H), Tajima's D (D), and Fu's  $F_s$  ( $F_s$ ).

\*\*\*  $P < 0.001$ , according to significance tests with 1,000 permutations.

(Hd) and Pi values, whereas the MNS population had the lowest. The haplotype number of different geographic populations ranged between 13 and 19 with an average of 15.3. Among the examined populations, the TC population had the largest haplotype number, with 19 haplotypes found in 20 tested individuals.

Tajima's D values of the concatenated sequence resulted in significantly negative values of -2.7221, but were significant in most specific populations ( $P > 0.05$  in BLK and  $P < 0.05$  in the rest of the populations). Fu's F statistic was significantly negative with a value of -25.9968, but was significant in all populations ( $P < 0.001$  in the all of the populations; Table 2). NS and BLK populations had negative and significant Tajima's D and Fu's  $F_s$  values. A unimodal distribution indicates that populations have passed through a recent demographic expansion (Excoffier 2004), whereas multimodal

distributions are consistent with stability (Slatkin and Hudson 1991). Distributions of pairwise differences (mismatch distributions) obtained from the overall populations were unimodal, and the distributions fitted the shape expected after a sudden demographic expansion (Fig. 2). It is suggesting that the populations of *C. italicus* in Sino-Kazakh border areas experienced population expansion. The significant neutral test results that were obtained from Tajima's D and Fu's  $F_s$  analysis further support this interpretation.

#### Haplotypes Analysis of Different Geographical Populations

All populations displayed large numbers of mitochondrial haplotypes, with a total 92 haplotypes obtained for COI, 49 haplotypes for COII, of which 16 and 13 were common haplotypes, respectively. Of

the 128 examined haplotypes found in the concatenated sequences, 109 were unique. The *COI* and *COII* median joining network displayed a genealogy with one main haplotype separated by one mutational step (Figs. 3 and 4). The haplotype network suggested that the most common haplotype (H1) might be the ancestral haplotype, as this haplotype had an internal position in the network, had many lineages that arose from it, and appeared at high frequencies.

### Analysis on the Genetic Diversity, Gene Flow, Genetic Differentiation, and Genetic Variation of Different Geographic Populations

The values of pairwise *Fst* ranged from  $-0.00904$  to  $0.12507$  with an average of  $0.03179$ . Of the 55 comparisons, 10 showed moderate genetic differentiation. Referring to the criterion for genetic differentiation by Wright (Wright 1978), we defined genetic differentiation as low for  $Fst < 0.05$ , moderate for  $0.05 < Fst < 0.15$ , high for  $0.15 < Fst < 0.25$ , and very high for  $Fst > 0.25$  (Govindajuru 1989). The pairwise *Fst* values of all the populations, except in BLK, were less than  $0.05$ , which indicated low genetic differentiation (Table 3). The levels of gene flow was categorized as  $N_m > 1$  (high gene flow),  $0.25$  to  $0.99$  (intermediate gene flow), and  $N_m < 0.25$  (low gene flow; Govindajuru 1989, Low et al. 2014). Generally, gene exchange leading to low genetic differentiation between populations occurs when  $N_m > 4$ . The total gene flow  $N_m$  was  $15.32$ , indicating that there was sufficient gene flow between populations. The values of pairwise genetic distance range from  $0.001$  to  $0.002$ , further supporting that there was low genetic differentiation between populations.

The AMOVA test showed that  $96.65\%$  of the genetic variation was within population, whereas  $3.35\%$  was among population. Exact tests showed a significant genetic variance on all two levels ( $P < 0.001$ ; Table 4), and  $96.65\%$  of the genetic variations of *C. italicus* were explained by intralocality variation. The remaining  $3.35\%$  was explained by variation among localities.

The Mantel test for 11 populations revealed no correlation between genetic distances and geographic distances ( $r = 0.2799$ ,  $P = 0.927 > 0.05$ ), suggesting that isolation by distance did not limit gene flow.

### Discussion

The adaptability of a species to environmental change depends largely on genetic diversity and genetic structure of its populations

(Zu et al. 1999). Results from this study indicate that the genetic differentiation level of *C. italicus* was low both between and within the 11 geographic populations that were sampled. This suggests that the frequent gene flow between populations likely increased in adaptability of this species to environmental changes. The low genetic differentiation of *C. italicus* may also underlie how this species progressed from a companion species into a dominant harmful species in some regions of Sino-Kazakh border areas; on the other hand, it constituted an intrinsic genetic factor of the continuous serious outbreaks of *C. italicus* in Sino-Kazakh border areas, and further verified the assumption proposed in this paper. What is more, the lower level of genetic differentiation and the more intensive gene flow can be observed among outbreaking populations from outbreaking areas. Gene flow is substantially larger among outbreaking populations than among nonoutbreaking populations. The more intensive gene flow among populations of outbreaking areas may be the result of demographic or behavioral factors (Chapuis et al. 2009). In this study, the *C. italicus* population has an intensive gene flow, which may also be the result of demographic or behavioral factors.

The median-joining network demonstrated that *C. italicus* populations along the Sino-Kazakh border had high genetic diversity. In the median-joining network, the most common haplotype (H1) had strong support as the ancestral haplotype due to its representation in a significant proportion of individuals in all populations and its central location in the network (Posada and Crandall 2001). It may be a stable haplotype with high environmental adaptability. The high values of haplotype diversity suggest the existence of small populations that have suffered recent population growth. This situation is observed for YNX population, whereas haplotype diversity is relatively high. Neutrality tests, conducted through the Tajima's *D* and Fu's *Fs* indices, support the hypotheses of a recent expansion from a relatively small population. Distributions of pairwise differences obtained using concatenated *COI* and *COII* sequences from the overall populations were unimodal, further supporting that the population of *C. italicus* experienced population expansion. However, the unique haplotypes that exist independently in different geographical populations indicate that there is a certain degree of genetic differentiation, as well as gene flow in different geographical populations. The haplotype network did not reveal any obvious geographical structure in the different clades and most haplotypes had a relatively mixed distribution pattern.

*Calliptamus italicus* showed rich intrapopulation haplotype diversity, suggesting that it has strong adaptability to different

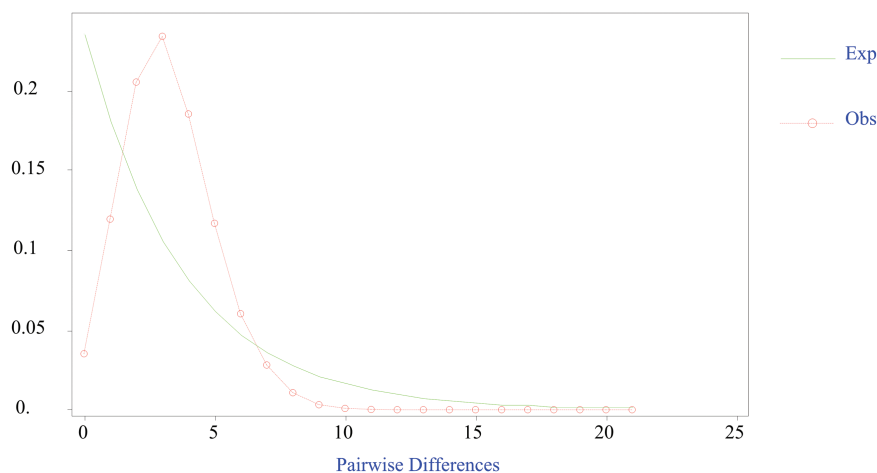
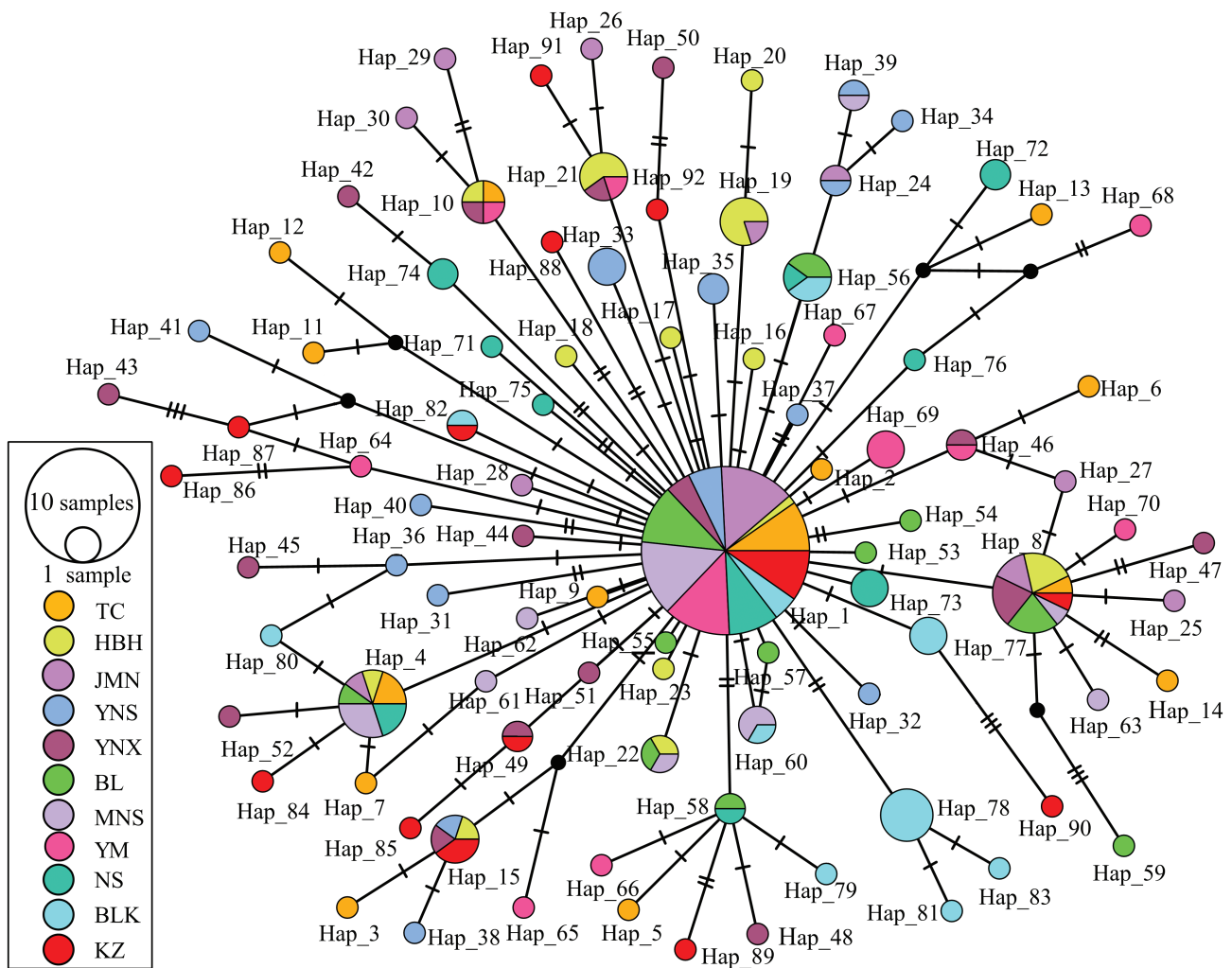


Fig. 2. Observed and expected mismatch distributions of *C. italicus* based on the combination of the *COI* and *COII* gene sequences.



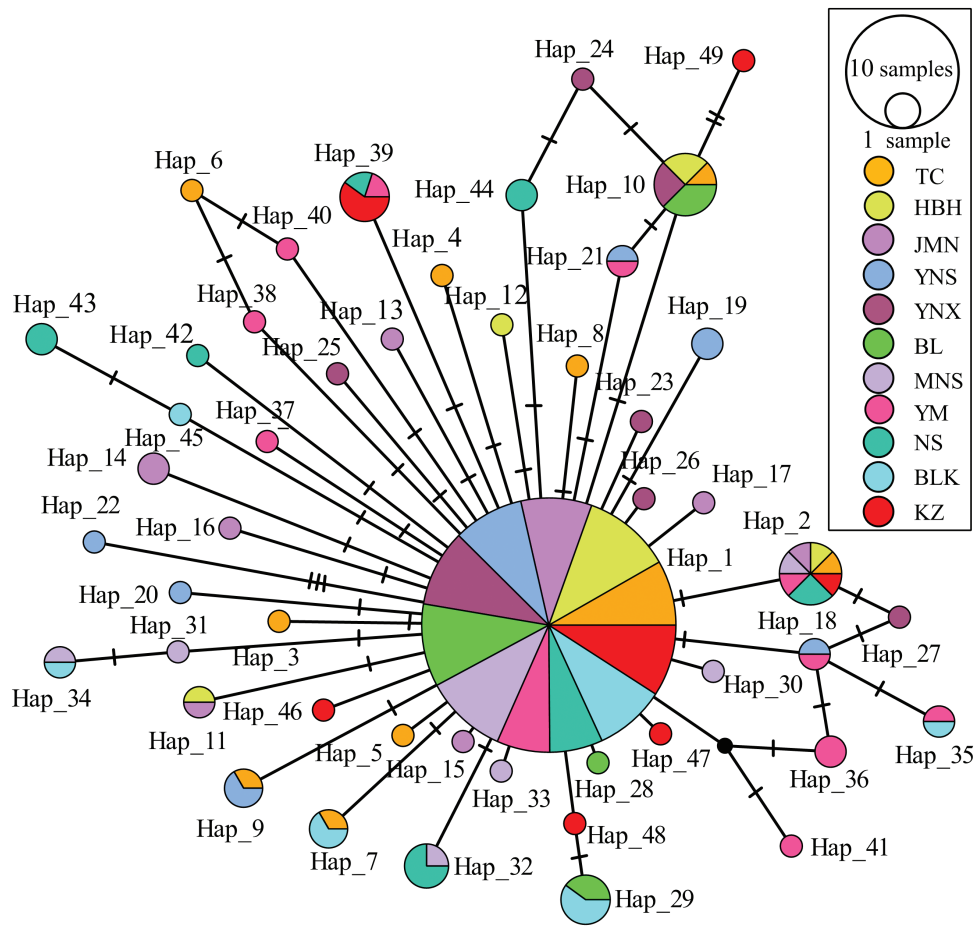
**Fig. 3.** Median-joining network based on the single genes of *COI* haplotypes. Each circle represents a haplotype, and the area of a circle is proportional to the number of observed individual. Colors within the nodes refer to the *C. italicus* sampling regions.

environments. However, different geographic populations had different haplotype and nucleotide diversities. This can be attributed to the wide distribution range and different eco-environmental conditions of *C. italicus*. Among the 11 geographic populations of *C. italicus*, the YNX population had the highest genetic diversity level. Environmental homogeneity leads to low genetic diversity levels, whereas environmental heterogeneity, in terms of geographic environment, climate, vegetation, and so forth, results in a high genetic diversity level (Sun et al. 2011). YNX is located in the Ili River Valley and is characterized by its diverse and rich vegetation (Yan et al. 2017). As such, there is high spatial heterogeneity and high genetic diversity level. The study results also coincide with the actual outbreaks of *C. italicus*. Each year, the mountain front steppes of YNX experience serious outbreaks of *C. italicus*.

Gene flow cannot only reveal the possible genetic infiltration and genetic differentiation among populations, but also weaken the genetic differences among populations (Millar and Libby 1991, Boivin et al. 2004). The total values of  $N_m$  were more than 4, indicating a high level of gene flow and a low or medium genetic differentiation among some populations of *C. italicus*. The level of gene exchange among populations may be determined by the flight capacity. *Calliptamus italicus* is generally regarded as a migratory species as it has high flight capacity, with a sphere of activity extending over

200–300 km (Huang and Zhu 2001). The strong flight capacity of *C. italicus* can increase gene flow among populations. Similar trends have been observed in many migratory species, such as *Oedaleus asiaticus* (Bienko) (Gao et al. 2011) and *Locusta migratoria manilensis* (Meyen) (Cheng 2005). The same result was reported by Liu et al. (2018).

The drainage basin of Lake Balkhash in South-East Kazakhstan is one of the largest breeding areas of locusts in the region of Central Asia. The reed grass-covered area of the River Ili delta represents the perfect habitat for locust oviposition and development. Since *C. italicus* can aggregate, outbreaks and even plagues are frequently observed. These occur at more or less regular intervals, depending on favorable climate conditions (Stolyarov 2000). During the 20th century, the number of ascents and outbreaks of *C. italicus* in Kazakhstan occurred 9 times (1909–1912; 1924–1927; 1931–1933; 1944–1947; 1953–1956; 1967–1970; 1977–1982; 1988–1991; 1997–2003). In such years, the locusts cover great distances without borders. Cross-border flights occur mainly between the West, North, and East Kazakhstan and neighboring regions of the Russian Federation, between South Kazakhstan and Kyrgyzstan, between East Kazakhstan and China (Azhbenov et al. 2015). In recent years, there have been no reports of large-scale cross-border migration of *C. italicus*, suggesting that the population of *C. italicus* collected in



**Fig. 4.** Median-joining network based on the single genes of *COII* haplotypes. Each circle represents a haplotype, and the area of a circle is proportional to the number of observed individual. Colors within the nodes refer to the *C. italicus* sampling regions.

**Table 3.** Pairwise *Fst* (below diagonal) and genetic distance (above diagonal) based on mitochondrial sequence data of 11 populations of *C. italicus*

	TC	HBH	JMN	YNS	YNX	BL	MNS	YM	NS	BLK	KZ
TC		0.001	0.001	0.002	0.002	0.001	0.001	0.002	0.002	0.002	0.002
HBH	0.01166		0.001	0.001	0.001	0.001	0.001	0.001	0.001	0.002	0.001
JMN	-0.00369	0.00072		0.001	0.001	0.001	0.001	0.001	0.001	0.002	0.001
YNS	0.01795	0.04393	0.03321		0.002	0.001	0.001	0.002	0.002	0.002	0.002
YNX	-0.01354	0.00064	-0.00904	0.02091		0.001	0.001	0.002	0.002	0.002	0.002
BL	0.00146	0.02024	0.00976	0.03920	-0.00884		0.001	0.001	0.001	0.002	0.001
MNS	-0.00628	0.02878	0.00610	0.02985	0.00304	0.01301		0.001	0.001	0.001	0.001
YM	0.00622	0.03154	0.01794	0.02787	0.00612	0.02854	0.02863		0.002	0.002	0.002
NS	0.01335	0.04981	0.03568	0.04399	0.01673	0.03775	0.02140	0.02994		0.002	0.002
BLK	0.08785	0.12507	0.11302	0.10588	0.08892	0.09221	0.11068	0.09726	0.10414		0.002
KZ	-0.00179	0.01906	0.01518	0.01750	-0.00515	0.01397	0.01496	0.01160	0.01863	0.08512	

The genetic distances (above diagonal) were used the Kimura-2-parameter model.

**Table 4.** Analysis of molecular variance (AMOVA) of populations of *C. italicus*

Source of variation	d.f.	Sum of squares	Variation components	Percentage of variation	P
Among populations	10	26.614	0.05450Va	3.35	<0.001
Within populations	209	328.400	1.57130Vb	96.65	<0.001
Total variance	219	355.014	1.62580		

Xinjiang was not from Kazakhstan. *Calliptamus italicus* is widely distributed on the desert and semidesert steppes of Central Asia and peripheral regions (Huang and Cheng 1999). In recent years, serious outbreaks of *C. italicus* have occurred in western Russia (Azhbenov et al. 2015) and southeastern Kazakhstan, and the border regions adjacent to Xinjiang of China have seen frequent migrations of *C. italicus* (Baybussenov et al. 2014, 2015). In this study, the collection sites of *C. italicus* have covered the Sino-Kazakh border areas; however, in-depth studies are still needed. More insects from over a broader geographical range and use of molecular markers suitable for faster evolutionary time scales will further elucidate the relationships between the populations of *C. italicus* in Xinjiang of China and those in Kazakhstan and Russia, and whether genetic differences underlie the occurrence of outbreaks.

## Acknowledgments

This study was supported by the International S&T Cooperation Project of China (ISTCP) (Grant 2016YFE0203100, 2015DFR30290) and the University Innovation Team Project of Xinjiang Uygur Autonomous Region (Grant No. XJEDU2017T007).

## References Cited

- Assefa, Y., A. Mitchell, and D. E. Conlong. 2006. Phylogeography of *Eldana saccharina* Walker (Lepidoptera: Pyralidae). *Ann. Soc. Entomol. Fr. (N.S.)* 42: 331–338.
- Assefa, Y., D. E. Conlong, J. Van Den Berg, and L. A. Martin. 2015. Ecological genetics and host range expansion by *Busseola fusca* (Lepidoptera: Noctuidae). *Environ. Entomol.* 44: 1265–1274.
- Assefa, Y., M. Gofitshu, C. Capdevielle-Dulac, and B. L. Ru. 2017. Clarifying the source of *Conicofrontia sesamoides* Hampson (Lepidoptera: Noctuidae) population in South African sugarcane using morphological identification and mitochondrial DNA analysis. *Phytoparasitica* 45: 45–55.
- Azhbenov, V. K., K. S. Baibussenov, A. T. Sarbaev, and V. B. Harizanova. 2015. Preventive approach of phytosanitary control of locust pests in Kazakhstan and adjacent areas. *Int. Conf. Agric. Ecol. Med. Sci.* :33–37.
- Baybussenov, K. S., A. T. Sarbaev, V. K. Azhbenov, and V. B. Harizanova. 2014. Environmental features of population dynamics of hazard nongregarious locusts in northern Kazakhstan. *Adv. Environ. Biol.* 8: 201–206.
- Baybussenov, K. S., A. T. Sarbaev, V. K. Azhbenov, and V. B. Harizanova. 2015. Predicting the phase state of the abundance dynamics of harmful non-gregarious Locusts in Northern Kazakhstan and substantiation of protective measures. *Biosci. Biotechnol. Res. Asia* 12: 1535–1543.
- Boivin, T., J. C. Bouvier, D. Beslay, and B. Suphanor. 2004. Variability in diapause propensity within populations of a temperate insect species: interactions between insecticide resistance genes and photoperiodism. *Biol. J. Linn. Soc.* 83: 341–351.
- Chapuis, M. P., M. Lecoq, Y. Michalakakis, A. Loiseau, G. A. Sword, S. Piry, and A. Estoup. 2008. Do outbreaks affect genetic population structure? A worldwide survey in *Locusta migratoria*, a pest plagued by microsatellite null alleles. *Mol. Ecol.* 17: 3640–3653.
- Chapuis, M. P., A. Loiseau, Y. Michalakakis, M. Lecoq, A. Franc, and A. Estoup. 2009. Outbreaks, gene flow and effective population size in the migratory locust, *Locusta migratoria*: a regional-scale comparative survey. *Mol. Ecol.* 18: 792–800.
- Chapuis, M. P., J. A. Popple, K. Berthier, S. J. Simpson, E. Deveson, P. Spurgin, M. J. Steinbauer, and G. A. Sword. 2011. Challenges to assessing connectivity between massive populations of the Australian plague locust. *Proc. Biol. Sci.* 278: 3152–3160.
- Chen, Y. L. 2000. Resurgent control and ecological management of Locust. *Bull. Chinese Acad. Sci.* 5: 341–345.
- Cheng, M. G. 2005. Study on molecule polymorphism of population and body-color in *Locusta migratoria manilensis* (Meyen). Master's degree thesis. Henan Agricultural University, Zhengzhou.
- Darvishzadeh, A., and A. R. Bandani. 2012. Identification and characterization of alpha-amylase in the Italian locust, *Calliptamus italicus* (Linnaeus, 1758) (Orthoptera: Acrididae). *Mun. Ent. Zool.* 7: 1028–1034.
- Excoffier, L. 2004. Patterns of DNA sequence diversity and genetic structure after a range expansion: lessons from the infinite-island model. *Mol. Ecol.* 13: 853–864.
- Fu, Y. X. 1997. Statistical tests of neutrality of mutations against population growth, hitchhiking and background selection. *Genetics* 147: 915–925.
- Gao, S. J., D. W. Li, A. P. Liu, Z. J. Yan, and L. B. Xu. 2011. Sequence analysis of mtDNA *COI* gene and relationships of geographical populations of *Oedaleus asiaticus* in Inner Mongolia. *Acta Agrestia Sinica*. 19: 846–851.
- Govindajuru, R. D. 1989. Variation in gene flow levels among predominantly self-pollinated plants. *J. Evol. Biol.* 2: 173–181.
- Gyllensten, U., D. Wharton, A. Josefsson, and A. C. Wilson. 1991. Paternal inheritance of mitochondrial DNA in mice. *Nature*. 352: 255–257.
- Huang, C. M., and X. Y. Cheng. 1999. The fauna of catantopidae and its origin in China and adjacent region. *Acta Entomol. Sin.* 42: 184–198.
- Huang, H., and E. L. Zhu. 2001. Serious occur of Locusts in Kazakhstan. *World Agric.* 6: 46–47.
- Kimura, M. 1980. A simple method for estimating evolutionary rates of base substitutions through comparative studies of nucleotide sequences. *J. Mol. Evol.* 16: 111–120.
- Leigh, J. W., and D. Bryant. 2015. PopART: full-feature software for haplotype network construction. *Methods Ecol. Evol.* 6: 1110–1116.
- Li, P. X., J. Lin, K. Maidi, J. G. Wu, Y. Q. Liu, and J. H. Zheng. 2017. Effects of future climate change on potential geographic distribution of *Calliptamus italicus* (L.) in Xinjiang. *Plant Prot.* 43: 90–96.
- Liu, H. X., L. Y. Yan, H. Yang, S. Gao, F. Hong, N. N. Liu, and G. F. Jiang. 2018. Phylogeographic structure of the bamboo grasshopper *Ceracris kiansu* populations based on mitochondrial *COII* gene sequences. *J. Environ. Entomol.* 40: 413–424.
- Low, V. L., P. H. Adler, H. Takaoka, Z. Ya'cob, P. E. Lim, T. K. Tan, Y. A. Lim, C. D. Chen, Y. Norma-Rashid, and M. Sofian-Azirun. 2014. Mitochondrial DNA markers reveal high genetic diversity but low genetic differentiation in the black fly *Simulium tani* Takaoka & Davies along an elevational gradient in Malaysia. *PLoS One* 9: e100512.
- Mantel, N. 1967. The detection of disease clustering and a generalized regression approach. *Cancer Res.* 27: 209–220.
- Meng, X. F., M. Shi, and X. X. Chen. 2008. Population genetic structure of *Chilo suppressalis* (Walker) (Lepidoptera: Crambidae): strong subdivision in China inferred from microsatellite markers and mtDNA gene sequences. *Mol. Ecol.* 17: 2880–2897.
- Millar, C. L., and W. J. Libby. 1991. Strategies for conserving clinal, ecotypic, and disjunct population diversity in widespread species// Falk DA, pp. 149–170. *In* K. E. Holsinger (eds.), *Genetics and conservation of rare plants*. Oxford University Press, New York.
- Miller, M. P. 1997. Tools for population genetic analysis (TFPGA) 1.3: a Windows program for the analysis of allozyme and molecular population genetic data. Flagstaff (AZ). Department of Biological Sciences, Northern Arizona University, Arizona, US.
- Posada, D., and K. A. Crandall. 2001. Intraspecific gene genealogies: trees grafting into networks. *Trends Ecol. Evol.* 16: 37–45.
- Rollins, L. A., A. P. Woolnough, R. Sinclair, N. J. Mooney, and W. B. Sherwin. 2011. Mitochondrial DNA offers unique insights into invasion history of the common starling. *Mol. Ecol.* 20: 2307–2317.
- Rozas, J., J. C. Sánchez-DelBarrio, X. Messeguer, and R. Rozas. 2003. DnaSP, DNA polymorphism analyses by the coalescent and other methods. *Bioinformatics* 19: 2496–2497.
- Salvato, P., A. Battisti, S. Concato, L. Masutti, T. Patarnello, and L. Zane. 2002. Genetic differentiation in the winter pine processionary moth (*Thaumetopoea pityocampa-wilkinsoni* complex), inferred by AFLP and mitochondrial DNA markers. *Mol. Ecol.* 11: 2435–2444.
- Schneider, S., D. Roessli, and E. L. Exco. 2000. Arlequin (version 2000). A software for population genetic analysis. Genetics and Biometry Laboratory, University of Geneva, Geneva, Switzerland.
- Seabra, S. G., P. G. Brás, J. Martins, R. Martins, N. Wyatt, J. Shirazi, M. T. Rebelo, J. C. Franco, C. Mateus, E. Figueiredo, et al. 2015. Phylogeographical patterns in *Coenosia attenuata* (Diptera: Muscidae): a



- widespread predator of insect species associated with greenhouse crops. *Biol. J. Linn. Soc.* 114: 308–326.
- Sekiné, K., B. Bayartogtokh, and Y. J. Bae. 2017. Post-glacial distribution of a Mongolian mayfly inferred from population genetic analysis. *Freshwater Biol.* 62: 102–110.
- Sergeev, M. G. 1992. Distribution patterns of orthoptera in North and Central Asia. *J. Orthoptera Res.* 182: 14–24.
- Sergeev, M. G., and I. A. Van'kova. 2008. The dynamics of a local population of the Italian locust (*Calliptamus italicus* L.) in an anthropogenic landscape. *Contemp. Probl. Ecol.* 1: 88–95.
- Slatkin, M., and R. R. Hudson. 1991. Pairwise comparisons of mitochondrial DNA sequences in stable and exponentially growing populations. *Genetics* 129: 555–562.
- Staden, R. 1996. The Staden sequence analysis package. *Mol. Biotechnol.* 5: 233–241.
- Stolyarov, M. V. 2000. Cyclicity and some characteristics of mass reproduction of *Calliptamus italicus* L. in Southern Russia. *Russ. J. Ecol.* 31: 43–48.
- Sun, Z. H., F. G. Luan, D. M. Zhang, M. J. Chen, B. Wang, and Z. Z. Li. 2011. Genetic Differentiation of *Isaria farinosa* populations in Anhui Province of East China. *Chinese J. Appl. Ecol.* 22: 3039–3046.
- Tajima, F. 1989. Statistical method for testing the neutral mutation hypothesis by DNA polymorphism. *Genetics.* 123: 585–595.
- Tamura, K., G. Stecher, D. Peterson, A. Filipski, and S. Kumar. 2013. MEGA6: molecular evolutionary genetics analysis version 6.0. *Mol. Biol. Evol.* 30: 2725–2729.
- Wright, S. 1978. *Evolution and genetics of populations.* University of Chicago, Chicago, IL.
- Wu, F., and X. P. Yan. 2018. Distribution of the related weevil species *Sitophilus oryzae* and *S. zeamais* (Coleoptera: Curculionidae) in farmer stored grains of China. *J. Econ. Entomol.* 111: 1461–1468.
- Yan, J. J., H. Huang, D. Cui, H. J. Liu, and C. Chen. 2017. Spatiotemporal dynamics of grassland fractional coverage in Yili Valley of Xinjiang from 2001 to 2015. *J. Central China Normal U. (Nat. Sci.)* 51: 865–872.
- Zu, Y. G., M. Sun, and L. Kang. 1999. *The theory, method, and application of molecular ecology,* pp. 30–37. Higher Education Press, Beijing, China.