

## **Differential Endometrial Gene Expression in Pregnant and Nonpregnant Sows 1**

Authors: Østrup, Esben, Bauersachs, Stefan, Blum, Helmut, Wolf, Eckhard, and Hyttel, Poul

Source: *Biology of Reproduction*, 83(2) : 277-285

Published By: Society for the Study of Reproduction

URL: <https://doi.org/10.1095/biolreprod.109.082321>

---

BioOne Complete ([complete.BioOne.org](https://complete.BioOne.org)) is a full-text database of 200 subscribed and open-access titles in the biological, ecological, and environmental sciences published by nonprofit societies, associations, museums, institutions, and presses.

Your use of this PDF, the BioOne Complete website, and all posted and associated content indicates your acceptance of BioOne's Terms of Use, available at [www.bioone.org/terms-of-use](https://www.bioone.org/terms-of-use).

Usage of BioOne Complete content is strictly limited to personal, educational, and non - commercial use. Commercial inquiries or rights and permissions requests should be directed to the individual publisher as copyright holder.

---

BioOne sees sustainable scholarly publishing as an inherently collaborative enterprise connecting authors, nonprofit publishers, academic institutions, research libraries, and research funders in the common goal of maximizing access to critical research.

# Differential Endometrial Gene Expression in Pregnant and Nonpregnant Sows<sup>1</sup>

Esben Østrup,<sup>2,3</sup> Stefan Bauersachs,<sup>4,5</sup> Helmut Blum,<sup>4</sup> Eckhard Wolf,<sup>4,5</sup> and Poul Hyttel<sup>3</sup>

Department of Basic Animal and Veterinary Sciences,<sup>3</sup> Faculty of Life Sciences, University of Copenhagen, Frederiksberg, Denmark

Laboratory for Functional Genome Analysis (LAFUGA)<sup>4</sup> and Chair for Molecular Animal Breeding and Biotechnology,<sup>5</sup> Gene Center, Ludwig-Maximilians University of Munich, Munich, Germany

## ABSTRACT

In an attempt to unveil molecular processes controlling the porcine placentation, we have investigated the pregnancy-induced gene expression in the endometrium using the Affymetrix GeneChip Porcine Genome Array. At Day 14 after insemination, at the time of initial placentation, samples were obtained from the endometrium of pregnant sows and sows inseminated with inactivated semen. Analysis of the microarray data revealed 263 genes to be significantly differentially expressed between the pregnant and nonpregnant sows. Most gene ontology terms significantly enriched at pregnancy had allocated more up-regulated genes than down-regulated genes. These terms included developmental process, transporter activity, calcium ion binding, apoptosis, cell motility, enzyme-linked receptor protein signaling pathway, positive regulation of cell proliferation, ion homeostasis, and hormone activity. Only the three terms oxidoreductase activity, lipid metabolic process, and organic acid metabolic process had an overrepresentation of down-regulated genes. A gene interaction network based on the genes identified in the gene ontology term developmental processes identified genes likely to be involved in the process of placentation. Pregnancy-specific localization of IL11RA to the surface epithelium of the endometrium suggests a role of interleukin 11 signaling in formation of the porcine epitheliochorial placenta. Furthermore, up-regulation of *FGF9* mRNA in pregnant endometrium and localization of *FGF9* to the apical cell domain of the glandular epithelium suggest the concept of endometrial *FGF9* acting as an embryonic growth factor in the pig.

endometrium, *ERBB3*, *FGF9*, *FGFR3*, *IL6R*, *IL11RA*, implantation, *LIFR*, *MUC4*, placenta, placentation, pregnancy, uterus

## INTRODUCTION

Successful embryonic development is dependent on a complex molecular cross-talk between the embryo(s) and the

maternal organism [1, 2]. In the pig, the embryo-maternal communication becomes evident at Day 12 of gestation, when the conceptuses release a surge of estrogen [3]. This embryonic signal for maternal recognition of pregnancy triggers changes in the prostaglandin metabolism of the endometrium to prevent regression of the corpora lutea by prostaglandin  $F_{2\alpha}$  (PGF2a) [4]. Recent research indicates that the estrogen signal from the conceptuses stimulates endometrial prostaglandin  $E_2$  (PGE2) synthesis. Combined with a positive PGE2 feedback loop in the endometrium, this synthesis leads to an increase in the PGE2:PGF2a ratio, which helps to overcome the luteolytic effect of PGF2a [5].

Following the embryonic signal for maternal recognition of pregnancy at Day 12, the porcine embryos remain free-floating in the uterine lumen until Days 13–14 of gestation, when they appose and subsequently attach to the uterine luminal epithelium [6]. Until this time of development, the embryos are supported from the endometrium by histiotrophic nutrition. From Days 15–20 of gestation, a gradual transition in embryonic nutrient takes place from being mainly histiotrophic to becoming primarily hemotrophic [6]. The functional changes are accompanied by extensive tissue remodeling of the endometrium [7, 8], where a pronounced vascularization is evident already from Day 13 of gestation [9, 10]. These processes, together with the attachment of the embryos to the surface epithelium of the uterus, initiate the placentation. The porcine placenta is, in contrast to that of many other species, epitheliochorial [11, 12]. That is, the placentation is noninvasive, and the placental barrier includes both the trophoblast and the epithelium of the endometrium.

During evolution, several subtypes of placentas have developed in eutherian mammals [11, 13]. However, the basic principles have not changed. Similar to all other subtypes of chorio-allantoic placentae, the epitheliochorial placenta is essential for the growth and development of the embryo and fetus. Despite the evolutionary changes in placental architecture, strong similarities also exist in the cellular functions between different placental subtypes [13]. Microarray investigations have been conducted successfully in several species in an attempt to disclose the mechanisms of placentation [14–16]. A comparison of similar studies, however, reveals large differences in the gene expression profile between the species [16], indicating a highly species-specific molecular regulation of placentation. Differences in the embryo maternal communication are not necessarily related to differences in the placental structure. In sheep and cows, the signal for maternal recognition of pregnancy is interferon tau, produced by the conceptuses [17]. The porcine conceptuses also produce interferons; however, they do not appear to be antiluteolytic [18]. Instead, it has been suggested that interferon gamma, the main interferon produced by the porcine conceptuses, might be important in regulation of angiogenesis in the endometrium, similar to the human and murine placenta [19]. However, the

<sup>1</sup>Supported by the Danish Pig Production, the Danish Agency for Science, Technology and Innovation grant 09-060623/FTP, and the German Federal Ministry for Education and Research (BMBF, FUGA-TOpus Compendium). Microarray data have been submitted to the NCBI Gene Expression Omnibus with accession no. GSE18641.

<sup>2</sup>Correspondence: Esben Østrup, Department of Basic Animal and Veterinary Sciences, Faculty of Life Sciences, University of Copenhagen, Grønnegårdsvej 7, 1870 Frederiksberg C, Denmark. FAX: 0045 353 32547; e-mail: esostrup@gmail.com

Received: 13 November 2009.  
First decision: 2 December 2009.  
Accepted: 31 March 2010.

© 2010 by the Society for the Study of Reproduction, Inc.  
This is an Open Access article, freely available through *Biology of Reproduction's* Authors' Choice option.  
eISSN: 1529-7268 <http://www.biolreprod.org>  
ISSN: 0006-3363

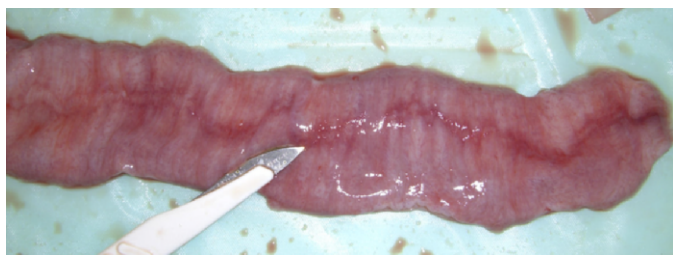


FIG. 1. Hyperemic zone in the endometrium identifying the sites of implantation, as seen after uterine flushing.

pregnancy-specific role(s) of estrogen- and interferon-stimulated genes in the porcine endometrium remains largely conjectural. Furthermore, only a few genes, which are differentially expressed at gestation, have been investigated [18].

In the present study, we aim to investigate pregnancy-induced changes in the gene expression of the porcine endometrium in an attempt to identify specific mechanisms involved in the regulation of the initial porcine placentation.

## MATERIALS AND METHODS

### Animals

Three pairs of Danish Landrace and three pairs of Yorkshire sows, each pair from the same litter, were inseminated and slaughtered in pairs. One sow in each pair was inseminated with a standard dose of single Duroc semen, whereas the other littermate was inseminated with a dose of freeze-inactivated semen from the same boar. The animals were slaughtered at Day 14 postinsemination. The uteri were removed, and each uterine horn was flushed with PBS containing 1% fetal calf serum and subsequently opened longitudinally at the antimesometrial side. The sites of embryonic attachment were macroscopically visual in the endometrium on the mesometrial side in the form of hyperemic zones (Fig. 1). In pregnant sows, samples of the endometrium (lamina epithelialis, lamina propria, and tela submucosa, but not tunica muscularis) were taken from such hyperemic zones at three locations of each uterine horn: proximal (the end close to the ovaries), intermedial, and distal (next to the corpus uteri). Samples were taken from the endometrium of the nonpregnant animals at comparable locations. Tissue samples were transferred to RNAlater (Ambion) or 4% paraformaldehyde (PFA)/PBS within 25 min after slaughter. Samples in RNAlater were incubated overnight at 4°C and stored at -80°C until further processing. Samples in 4% PFA/PBS were incubated overnight at 4°C and stored in 1% PFA/PBS at 4°C until embedding in paraffin. All procedures involving animals were conducted in accordance with the national guidelines for agricultural animal care.

### Microarray Analysis

Total RNA was isolated from endometrium using TRIzol (Invitrogen) according to the manufacturer's recommendations. An additional RNA selective precipitation was made using ammonium acetate. Purity and quantity of total RNA was measured by use of Nanodrop ND-1000 spectrophotometer (Thermo Fisher Scientific), and quality was assessed by electrophoresis. RNA samples were tested for genomic DNA contamination by performing a quantitative RT-PCR without reverse transcriptase in the RT step.

Equal amounts of total RNA from samples of proximal, intermedial, and distal endometrial sections were pooled for each animal. Probe synthesis and hybridization to the porcine GeneChip from Affymetrix were performed according to the recommendations of the manufacturer. Cel files were processed using the Robust Multi-Array normalization in the BioConductor package *affy* for R [20]. Microarray data have been deposited in the National Center for Biotechnology Information's Gene Expression Omnibus [21] and are accessible through GEO Series accession number GSE18641 (<http://www.ncbi.nlm.nih.gov/geo/query/acc.cgi?acc=GSE18641>). For quality control, normalized data were analyzed with a distance matrix and a heatmap based on pair-wise distances (BioConductor package *geneplotter*). Two samples were excluded from further analysis. Significance analysis was performed using the BioConductor package Linear Models for Microarray Data (LIMMA) [22]. Cut-off values were set to twofold difference in expression values and a false discovery rate of 1%. Identified probe sets were annotated by comparing two automated annotations [23, 24]. In case of disagreement between these annotations, the target sequences of the probe sets were manually annotated using BLAST [25]. If a gene was identified in the results by more than one probe set, the mean fold-change was calculated. Integrated analysis of different functional databases was done using the functional annotation clustering tool of the Database for Annotation, Visualization, and Integrated Discovery (DAVID) [26].

Furthermore, DAVID was used to calculate the fold-enrichment of identified Gene Ontology (GO) terms. The fold-enrichment for a particular GO term describes the ratio between the numbers of genes in the gene list belonging to a specific GO term and the total number of genes in the gene list, which have at least one GO annotation. This ratio is then compared to the ratio between the total number of genes in the GO term and the total number of genes in the human genome with at least one GO annotation. For example, if 8 (3.5%) of 223 genes in the gene list are involved in hormone activity and the ratio in the human genome is 127 (0.75%) of 16968 genes associating with hormone activity, the fold-enrichment is roughly  $3.5\%/0.75\% = 4.7$ . Fold-enrichment for the remaining GO terms was calculated in a similar manner.

An interaction network was built using Pathway Architect Software (version 2.0.1; Stratagene). Interactions provided by the Pathway Architect databases were cross-checked with literature, and additional interactions were assigned to the network. The human Entrez Gene IDs of the putative human orthologous genes for the identified porcine transcripts were used for these analyses.

### Quantitative Real-Time RT-PCR

The same RNA as used for the microarrays was used to validate the results by real-time RT-PCR (see Table 4). One microgram of total RNA was reverse transcribed in a total volume of 25  $\mu$ l, containing 1 $\times$  buffer (Promega), 0.5 mM

TABLE 1. Primer sequences used to amplify specific fragments of porcine transcripts.

Gene symbol	PCR-product (bp)	Melting point (°C)	Primer sequence	Accession no.
<i>UBB</i>	85	81.6	Forward: 5'-GTCTGAGGGGTGGCTGCTAA-3' Reverse: 5'-TGGGGCAAATGGCTAGAGTG-3'	NM_001105309
<i>LIFR</i>	152	77.1	Forward: 5'-GCAGGAAGCAAACCTAGAGATTACAG-3' Reverse: 5'-ACAGCAACATCACCTCCAAAT-3'	AJ656748
<i>IL6R</i>	107	80.0	Forward: 5'-GTTCCAATCCCTGCCTTCTG-3' Reverse: 5'-CCCAGTGCCAGTTTCTATG-3'	CF368332
<i>IL11RA</i>	95	83.9	Forward: 5'-GTGGATGGATGGACAGGACA-3' Reverse: 5'-TGGCAGTTTGGAACAGTC-3'	CK466326
<i>FGF9</i>	77	82.9	Forward: 5'-CTGGAAGGCGTTCTATGTG-3' Reverse: 5'-TTTCTGGTGCCTTTAGTCC-3'	NM_213801
<i>FGFR3</i>	135	83.7	Forward: 5'-ATAGCCCGCACTACCTTCA-3' Reverse: 5'-GCCATGAGAACAGAGCCCTA-3'	CN163586
<i>MUC4</i>	84	81.8	Forward: 5'-AGCCATCACCCCTTCACTC-3' Reverse: 5'-TGGTAGGTTCTCACACAGACACA-3'	EV856946
<i>ERBB3</i>	140	78.6	Forward: 5'-CTCCAACCTCTTCTTTCACA-3' Reverse: 5'-TGACTTTGTTTCCAGCAGA-3'	XM_001927652

dNTPs (Fermentas), 16 ng/ $\mu$ L of random hexamer primers (Fermentas), 8 ng/ $\mu$ L ( $\mu$ M) of oligo-dT primers (Fermentas), 200 U of Moloney Murine Leukemia Virus Reverse Transcriptase (Promega), and 32 U of RNase H Minus, Point Mutant (Promega). Primers were designed to amplify specific fragments referring to selected regulated genes (Table 1). Amplified PCR fragments were sequenced with forward and reverse primers to verify the resulting PCR product. The specific melting point of the amplified product carried out within the LightCycler standard PCR protocol served as a verification of the product identity in the following PCR procedures. Real-time PCR reactions were performed in a 10- $\mu$ L reaction mixture (2  $\mu$ L of cDNA, 1  $\mu$ M forward and reverse primer, and 1 $\times$  Light Cycler DNA Master SYBR Green I [Roche]) using a real-time LightCycler 480 instrument (Roche). The annealing temperature was 60°C for all reactions. A no-template control was made in all runs, using water instead of cDNA.

The reference gene ubiquitin B (*UBB*), which previously has been used as a reference gene in the endometrium [16], showed no statistical difference between pregnant and nonpregnant animals according to the microarray data verifying its suitability as reference gene. Expression levels of the selected target genes were calculated using relative quantification (LightCycler 480 software version 1.5.39). The data were normalized to the expression of *UBB*, and a calibrator was included to normalize between runs. Five biological and three technical replicates were made for all quantitative PCR reactions. Calculations of significant difference in the real-time RT-PCR expression data between samples from pregnant and nonpregnant animals were carried out in R using Wilcoxon signed-rank tests.

### Immunohistochemistry

Endometrial samples stored in 1% PFA/PBS were dehydrated and embedded in paraffin. Paraffin sections (thickness, 5  $\mu$ m) mounted on Superfrost Plus slides (Gerhard Menzel, Braunschweig, Germany) were dewaxed followed by blocking of endogenous peroxidase with 0.5% (v/v)  $H_2O_2$  in 99% ETOH. After rehydration, sections were submitted to heat-induced epitope retrieval by microwave treatment in either 0.01 M sodium citrate buffer (pH 6.0) or in ethylenediaminetetra-acetic acid at either pH 8 or pH 9 (Table 2). Nonspecific binding of antibodies was blocked with PBS containing 1.25% normal horse serum (Vector Laboratories) and 1% bovine serum albumin (Sigma-Aldrich). Incubation with the primary antibodies was performed at room temperature for 2 h or overnight at 4°C (see Table 2 for details on specific antibodies). The antibodies against ERBB3 and IL6R were preadsorbed with Poly-L-lysine (Sigma-Aldrich) overnight at 4°C to reduce unspecific binding [27, 28]. Controls were made using preadsorption controls for all polyclonal antibodies using the specific blocking peptides IL6R (Santa Cruz), IL11RA (Santa Cruz), ERBB3 (Santa Cruz), LIFR (R&D Systems), and isotype controls for monoclonal antibodies using mouse IgG2a and IgG3 (Abcam). Detection of the primary antibodies was performed using ImmPRESS (Vector Laboratories). The ImmPRESS secondary antibodies were preadsorbed with 0.1% normal swine serum (DAKO) at 4°C overnight to minimize background. The color reaction was developed with an AEC-kit (Zymed Laboratories). Sections were counterstained with Mayer hematoxylin before mounting in Glycergel (Dako).

## RESULTS

### Microarray Analysis

A heatmap analysis of the normalized microarray data (data not shown) revealed one pregnant and one nonpregnant animal as having highly abnormal gene expression when compared to

the expression-pattern of the remaining 10 animals. One of these two animals presented signs of weak endometritis at the time of sample collections. The data from these two animals were not included in the further analyses.

When comparing the gene expression in the endometrium of pregnant sows ( $n = 5$ ) with that of nonpregnant sows ( $n = 5$ ), 323 probe sets were identified to be more than twofold significantly differentially expressed (Supplemental Tables S1 and S2 available at [www.biolreprod.org](http://www.biolreprod.org)). Annotation of the 323 probe sets revealed 146 genes expressed at higher levels in pregnant animals (referred to hereafter as up-regulated genes). Another 117 genes were detected with lower expression in the pregnant animals (referred to hereafter as down-regulated genes). From 18 probe sets, which could not be annotated, 13 were up-regulated, and five were down-regulated.

The 263 genes identified to be differentially expressed were analyzed using the functional annotation chart and the functional annotation clustering tool from DAVID [26]. The analyses were based on the major categories Biological Process and Molecular Function. A combination of the most informative significantly enriched GO terms from the resulting functional clusters and GO terms that were not included in the functional clustering but were found to be significantly enriched by the functional annotation chart have been summarized in Table 3. Of the GO terms that were significantly enriched, most terms had allocated more up-regulated genes than down-regulated genes at pregnancy. Among these were GO terms such as developmental process, apoptosis, cell motility, and positive regulation of cell proliferation, which are likely to be enriched because of remodeling of the endometrium in relation to the placentation. Another group of enriched GO terms contains genes involved in formation and regulation of histiotrophe (e.g., transporter activity, calcium ion binding, and ion homeostasis). Furthermore, GO terms describing different aspects of communication and signaling, response to external stimulus, enzyme-linked receptor protein signaling pathway, and hormone activity were present in the group of significantly enriched GO terms, with an over-representation of up-regulated genes. Only three GO terms had an overrepresentation of down-regulated genes. These GO terms were oxidoreductase activity, lipid metabolic process, and organic acid metabolic process. The enriched terms with most down-regulated genes included genes involved in steroid hormone and prostaglandin metabolism.

Using Pathway Architect software (version 2.0.1; Strata-gene), an interaction network was built based on the genes present in the GO term developmental process (Fig. 2). This network includes possible interactions between genes involved in cytokine and growth factor-mediated cell signaling. Among the genes identified in our results contributing to the cytokine-mediated signaling are genes related to the interleukin families.

TABLE 2. Primary antibodies, HIER treatment, and incubation time.

Primary antibody	Manufacturer	Product code	Source	Clonality	Isotype	Concentration ( $\mu$ g/ml)	HIER <sup>a</sup>	Primary antibody incubation <sup>b</sup>
Anti-human LIFR	R&D Systems (Minneapolis, MN)	AF-249-NA	Goat	Polyclonal	IgG	0.50	Ph 9	2 h RT
Anti-human IL6R	Santa Cruz (Santa Cruz, CA)	sc-661	Rabbit	Polyclonal	IgG	0.10	Ph 6	2 h RT
Anti-human IL11RA	Santa Cruz	sc-993	Rabbit	Polyclonal	IgG	8.00	Ph 9	2 h RT
Anti-human FGF9	Santa Cruz	sc-8413	Mouse	Monoclonal	IgG3	20.00	Ph 9	2 h RT
Anti-human FGFR3	Santa Cruz	sc-13121	Mouse	Monoclonal	IgG2a	8.00	Ph 9	2 h RT
Anti-human MUC4	Abnova (Taipei City, Taiwan)	H00004585-M07	Mouse	Monoclonal	IgG2a	0.20	Ph 6	2 h RT
Anti-human ERBB3	Santa Cruz	sc-285-G	Goat	Polyclonal	IgG	0.67	Ph 9	o/n 4°C

<sup>a</sup> HIER, heat induced epitope retrieval.

<sup>b</sup> RT, room temperature; o/n, over night.

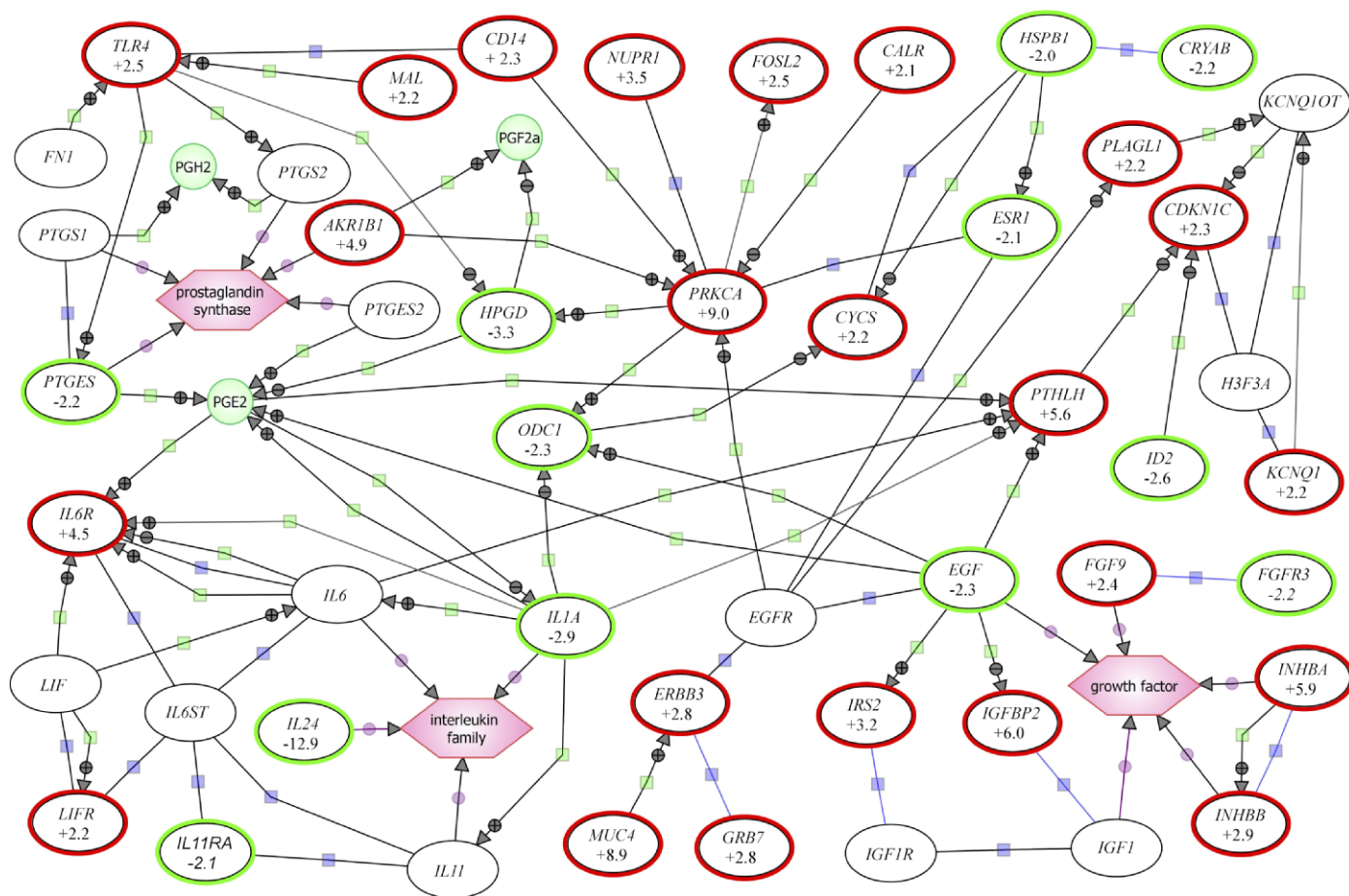


FIG. 2. Interaction network based on differentially expressed genes belonging to the GO term developmental process. Genes highlighted with red frames were up-regulated at pregnancy. Genes highlighted with green frames were down-regulated at pregnancy. The numbers under the gene symbols indicate the fold-change in mRNA expression. Genes framed with a thin black line were not identified to be differentially expressed in the endometrium when comparing pregnant and nonpregnant sows. Purple polygons illustrate gene families. Green circles illustrate hormones. Arrows with a green square indicate positive (+) or negative (-) regulation. Lines with a blue square indicate binding. Arrows with a purple circle indicate gene family member.

These include the receptors *IL6R*, *LIFR*, and *IL11RA*. Both *IL6R* and *LIFR* were found to be up-regulated, whereas *IL11RA* was down-regulated. Among the growth factor-related genes, *FGF9* was up-regulated. The *FGF9* receptor *FGFR3* was, however, down-regulated. Another growth factor receptor, *ERBB3*, was identified by the microarray to be up-regulated. A possible interaction was found by the network between *ERBB3* and the mucin *MUC4*. The mucin *MUC4* was approximately ninefold higher expressed in the endometrium of the pregnant animals compared to the expression in the nonpregnant animals.

#### Quantitative RT-PCR

Based on the interaction network, seven genes (*IL6R*, *LIFR*, *IL11RA*, *MUC4*, *ERBB3*, *FGF9*, and *FGFR3*) were selected for mRNA quantification by quantitative RT-PCR (Table 4). The results obtained by array hybridization were clearly confirmed, and more accurate gene expression differences were obtained.

#### Immunohistochemistry

The localization of *IL6R*, *LIFR*, *IL11RA*, *MUC4*, *ERBB3*, *FGF9*, and *FGFR3* proteins was investigated in the endometrial tissue (Fig. 3).

*IL6R*. Strong staining for *IL6R* was seen in surface epithelium, superficial and deep glandular epithelium, as well as stroma cells, endothelial cells, and leukocytes. No differences were observed in the localization of *IL6R* between pregnant and nonpregnant animals (Fig. 3, a and b).

*LIFR*. Staining for *LIFR* was present in the surface epithelium as well as in superficial and deep glandular epithelium, with a tendency for weaker staining in the deeper glands. Staining for *LIFR* was also seen in some stromal cells, endothelial cells, and leukocytes. No differences were observed in the protein localization of *LIFR* between pregnant and nonpregnant animals (Fig. 3, d and e).

*IL11RA*. Staining for *IL11RA* was found in superficial glandular epithelium and in most of the deeper glandular epithelium in both pregnant and nonpregnant animals (Fig. 3, g and h). Furthermore, *IL11RA* was detected in the surface epithelium of all pregnant animals, whereas it was only detected in few cells at this location in nonpregnant animals.

*MUC4*. Strong staining for *MUC4* was observed in the surface epithelium as well as in superficial and deep glandular epithelium. In the surface epithelium, *MUC4* staining was primarily cytoplasmic, whereas in the glandular epithelium, *MUC4* was strongly localized to the extracellular matrix and the apical domain of the cells. No differences were seen in the localization of the protein between pregnant and nonpregnant animals (Fig. 3, j and k).



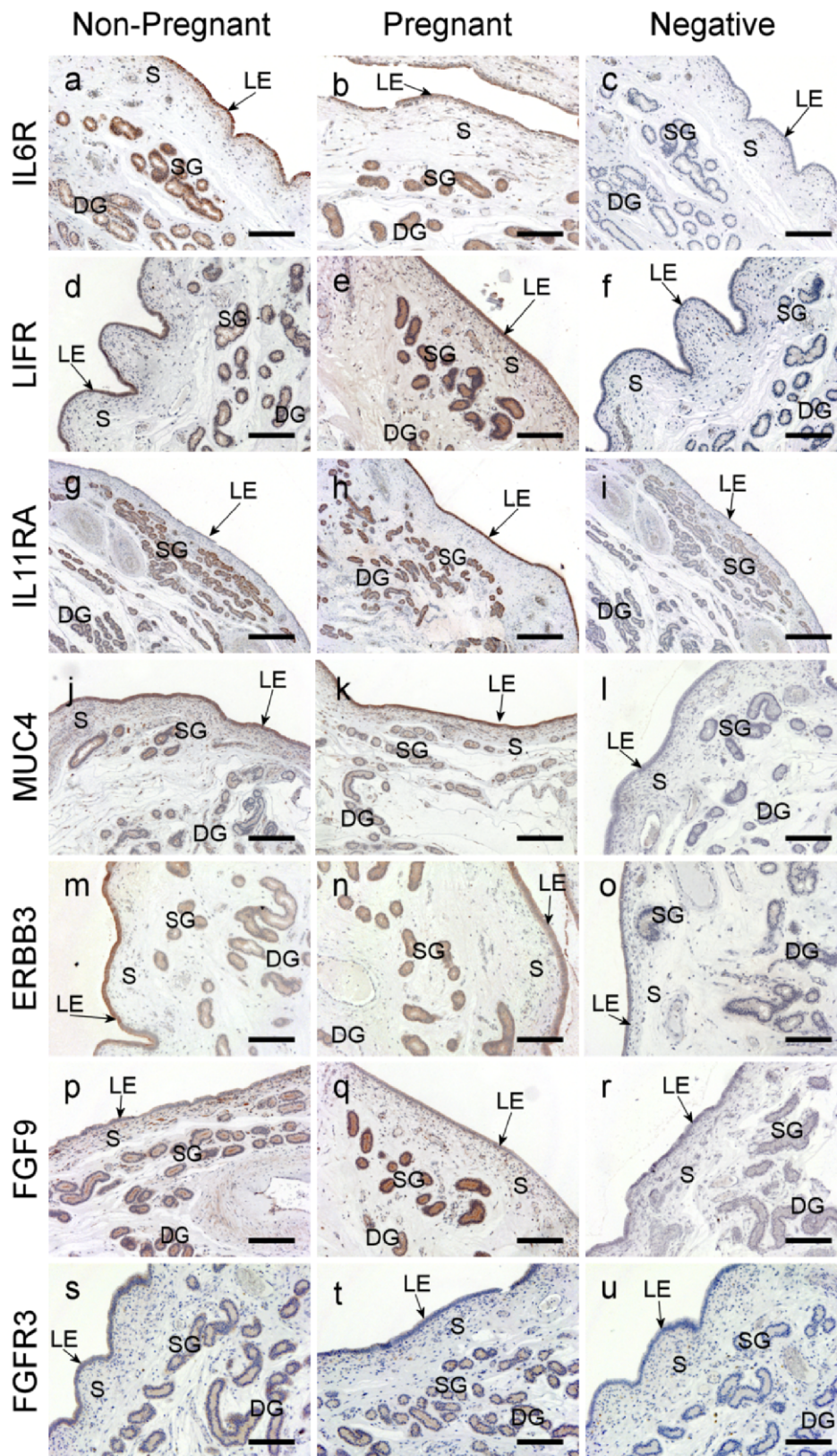


FIG. 3. Immunohistochemical localization of IL6R (a and b), LIFR (d and e), IL11RA (g and h), MUC4 (j and k), ERBB3 (m and n), FGF9 (p and q), FGFR3 (s and t), in endometrial tissue from nonpregnant (a, d, g, j, m, p, and s) and pregnant (b, e, h, k, n, q, and t) sows. Corresponding negative controls: IL6R preadsorption control (c), LIFR preadsorption control (f), IL11RA preadsorption control (i), murine IgG2a Isotype control (l), ERBB3 preadsorption control (o), murine IgG3 Isotype control (r), and murine IgG2a Isotype control (u). DG, deep glands; LE, luminal epithelium; S, stroma; SG, superficial glands. Bar = 200  $\mu$ m (a–f and j–u) and 500  $\mu$ m (g–i).

*ERBB3*. Staining for *ERBB3* was found in the surface epithelial cells as well as in superficial glandular epithelium. Weaker staining was observed in the deeper-lying glandular epithelium. No differences were observed in the protein

localization of *ERBB3* between pregnant and nonpregnant animals (Fig. 3, m and n).

*FGF9*. Strong staining for *FGF9* was present in the apical cell domain of superficial and deep glandular epithelium.

TABLE 3. Significantly enriched gene ontology terms.

Gene ontology term	No. of genes	Genes <sup>a</sup>	Fold enrichment	P value for enrichment
GO:0032502 developmental process	66	<b>CD24, PRKCA, IGFBP2, PTHLH, INHBA, EDNRB, IL6R, EFHD1, LYZ, CLDN11, NUPR1, SCIN, IRS2, INHBB, ERBB3, LAMB3, SH3GL2, FOSL2, MTR, TLR4, HNF1B, ARSE, FGF9, FYN, ST6GAL1, PLXDC2, GJB3, RFFL, CDKN1C, GCLC, ENPP1, GULP1, CYCS, MAL, PLAGL1, CALR, IFI16, KLF9, FEZ2, BCL6, CD14, ITGAV, EDG1, SCML2, GNPTAB</b> RAB26, IL24, ANKH, TLL2, SDCBP2, ID4, HMGCR, IFI6, CHL1, IL1A, ID2, SLIT2, CRIM1, ODC1, EGF, RNF144B, CRYAB, FGFR3, CHRDL1, HSPB1, ESR1	1.39	0.003
GO:0005215 transporter activity	31	<b>SLC16A1, TRPV6, CACNA1B, SLC2A1, STEAP1, SLC39A2, SLC11A2, FXYD3, MRS2L, ABCB10, SLC5A6, ATP10B, APOD, GJB3, NUP133, KCNQ1, MAL, AP1B1, CLIC2</b> FXYD4, AQP3, ANKH, ATP8A1, ATP1B1, SLC23A1, SLC9A4, SLC2A3, CCT6B, SLC7A9, STARD4, SLC25A1	1.60	0.010
GO:0016491 oxidoreductase activity	27	<b>GPX3, KMO, AKR1B1, STEAP1, SOD3, COQ6, F5, IFI30, LTB4DH, CYCS</b> GRHPR, HPGD, SCD5, DHFR, HMGCR, SORD, SQLE, CYP2C18, HSD17B7, LDHD, SC4MOL, CYP2J2, CYP51A1, ETFB, RNF144B, FASN, MDH1	2.15	0.000
GO:0005509 calcium ion binding	24	<b>S100A9, TRPV6, CAPNS1, PRKCA, CACNA1B, PTHLH, EFHD1, SCIN, F5, ARSE, KIAA0494, CALR, PROS1, MAN1A1, PLS3, ITGAV, GNPTAB</b> CALML4, TLL2, PADI2, PLCH1, ENTPD1, SLIT2, EGF	1.81	0.007
GO:0006629 lipid metabolic process	23	<b>PLCXD3, APOD, LTB4DH, PLA2G7</b> FDPS, HPGD, SCD5, HMGCR, PIGB, SQLE, PLCH1, HSD17B7, HMGCS1, IDI1, ACAT2, SC4MOL, CYP2J2, CYP51A1, STARD4, MTMR7, LSS, PTGES, FASN	2.06	0.002
GO:0006915 apoptosis	22	<b>CD24, PRKCA, INHBA, NUPR1, SCIN, RFFL, GCLC, GULP1, CYCS, MAL, PLAGL1, CALR, IFI16, BCL6, CD14</b> IL24, IFI6, IL1A, RNF144B, CRYAB, HSPB1, ESR1	1.92	0.005
GO:0009605 response to external stimulus	22	<b>S100A9, NPY, STC1, PRKCA, INHBA, LYZ, INHBB, F5, TLR4, ENPP1, PROS1, BCL6, CD14, PLA2G7, LY96, EDG1, VWF</b> DEFB1, IL1A, ENTPD1, SLIT2, GPR68	2.34	<0.001
GO:0006082 organic acid metabolic process	21	<b>PRKCA, MTR, GCLC, LTB4DH, ASS1, CAD</b> HDC, BCAT1, GRHPR, GOT1, HPGD, SCD5, DHFR, SLC7A9, SC4MOL, CYP2J2, EGF, PTGES, ACO1, FASN, MDH1	2.50	<0.001
GO:0006928 cell motility	14	<b>CD24, SELL, NPY, PRKCA, EDNRB, FYN, GAB1, FEZ2, BCL6, EDG1</b> HMGCR, CHL1, SLIT2, HSPB1	2.28	0.009
GO:0007167 enzyme linked receptor protein signaling pathway	14	<b>PRKCA, INHBA, IRS2, ERBB3, GRB7, FGF9, CDKN1C, GAB1</b> SORBS1, FMOD, HPGD, EGF, CRYAB, FGFR3	3.37	0.000
GO:0008284 positive regulation of cell proliferation	11	<b>CD24, CAPNS1, PTHLH, IRS2, FGF9, LIFR, BCL6, EDG1</b> ID4, ODC1, EGF	3.14	0.003
GO:0050801 ion homeostasis	11	<b>CD24, STC1, PRKCA, EDNRB, AGTR1, TFRC, GCLC, CALR, EDG1</b> SLC9A4, IFI6	3.20	0.002
GO:0005179 hormone activity	8	<b>NPY, NMB, STC1, PTHLH, INHBA, INHBB</b> PENK, CORT	4.69	0.002

<sup>a</sup> Genes identified to be significantly up- or down-regulated by the microarray; up-regulated genes are presented in bold.

Weaker staining was observed in the surface epithelium and stromal cells. No differences in the localization of the protein were observed between pregnant and nonpregnant animals (Fig. 3, p and q).

*FGFR3*. Staining for *FGFR3* was primarily localized to the glandular epithelium and, to some degree, the surface epithelium. No differences were seen in the localization of *FGFR3* between pregnant and nonpregnant animals (Fig. 3, s

TABLE 4. Validation of microarray results using real-time RT-PCR.

Genes	Relative expression (mean ± SEM)		Mean fold changes		P value	
	Pregnant	Nonpregnant	qPCR	Microarray	qPCR	Microarray
<i>MUC4</i>	1.66 (0.30)	0.08 (0.02)	19.7	8.9	0.004	<0.001
<i>ERBB3</i>	2.09 (0.45)	0.55 (0.10)	3.8	2.8	0.004	0.001
<i>LIFR</i>	1.53 (0.17)	0.59 (0.04)	2.6	2.2	0.004	0.005
<i>IL6R</i>	2.14 (0.25)	0.38 (0.08)	5.7	4.5	0.004	0.006
<i>IL11RA</i>	2.15 (0.51)	4.90 (0.40)	-2.3	-2.1	0.008	0.006
<i>FGF9</i>	1.86 (0.26)	0.45 (0.03)	4.1	2.4	0.004	0.001
<i>FGFR3</i>	0.70 (0.08)	1.03 (0.10)	-1.5	-2.2	0.048	0.003

and t); however, a tendency was found for higher staining intensity in the luminal epithelium of the pregnant animals compared to the nonpregnant.

## DISCUSSION

In the present study, we successfully identified 263 genes that were significantly differentially expressed in the porcine endometrium between pregnant and nonpregnant sows. Based on an interaction network, we selected the genes *IL6R*, *LIFR*, *IL11RA*, *MUC4*, *ERBB3*, *FGF9*, and *FGFR3*, which are potential candidate genes for regulation of placentation.

The interleukin 6 family of cytokines is well known to be a key regulator of implantation and placentation. In mice, these cytokines as well as their receptors are required for normal implantation and embryonic survival [29]. In the present study, we identified the specific receptors *IL6R*, *LIFR*, and *IL11RA* to be significantly differentially expressed; however, neither the cytokines nor the common signal transducer, *IL6ST*, was among the differentially expressed genes. This indicates that endometrial regulation of signaling in this cytokine family is, to a great extent, controlled by the expression of the specific receptors.

The receptor *IL6R* was localized in both surface and glandular epithelium, as well as to cells of the stroma, in both pregnant and nonpregnant animals. This localization of the *IL6R* in the porcine endometrium is similar to that reported in human endometrium [30].

*LIFR* was similar to *IL6R* localized to both surface and glandular epithelium, as well as to some stromal cells of the porcine endometrium. The *LIFR* mRNA expression was similar to that in mouse [31], increased in pregnant animals; however, no apparent differences were noticed in the localization of the *LIFR* between pregnant and nonpregnant animals. This localization of *LIFR* is similar to that reported in the endometrium of the rhesus monkey during the luteal phase and peri-implantation period [32]. In human and mouse, *LIFR* mRNA was shown to be exclusively expressed in the surface epithelium at the time of implantation [31, 33], and only weak staining for *LIFR* has been reported in human glandular epithelium [30, 34].

In contrast to the two other receptors in the *IL6* cytokine family, *IL11RA* was significantly lower expressed in the endometrium from the pregnant animals compared to the nonpregnant (Table 4). In human endometrium, it is without any cyclic variation [35].

Interestingly, a marked increase in the number of cells stained for *IL11RA* protein was identified in the surface epithelium of pregnant compared to nonpregnant sows (Fig. 3), despite the down-regulation of *IL11RA* mRNA in the endometrial tissue samples from pregnant sows. The role of *IL11* has been investigated in mice [36] and humans, in which *IL11* stimulates migration of extravillous trophoblast cells but prevents their invasion [37, 38]. The crucial role of *IL11* in prevention of invasion is also supported by studies in *Il11ra* knock-out mice. Hence, mice lacking *Il11ra* were infertile because of failure in the decidualization and, possibly, overinvasiveness of the trophoblast [36, 39]. Porcine embryos are capable of invading tissues when placed on ectopic locations [40]. Hence, noninvasiveness of the porcine implantation has been suggested to be controlled by the endometrium rather than by the trophoblast. The pregnancy-dependent localization of *IL11RA* to the surface epithelium suggests that *IL11* signaling may play a role in the porcine endometrium by inhibiting the trophoblast invasion through the surface

epithelium, similar to what is described in the mouse for the decidual zone.

It has been suggested previously that *MUC4* expressed by the porcine endometrium also plays a role in protecting the surface epithelium from invasion [41]. Accordingly, in the present study, we identified *MUC4* to have significantly higher expression in the pregnant compared to the nonpregnant endometrium. Experiments in rodents, on the contrary, show a down-regulation of mucins just before implantation of the blastocyst [42, 43]. The different placentation types between rodents and pigs, combined with the different expression pattern of *MUC4*, supports the idea that *MUC4* might act as a protector of the porcine surface epithelium against invasion of the conceptuses [41].

On the contrary, the expression of *MUC4* in the human endometrium is highest during the follicular (proliferative) phase of the menstrual cycle rather than during the luteal (secretory) phase [44]. Moreover, indications exist that *MUC4* is not related to invasiveness in humans [45]. On the other hand, increased expression levels of *MUC4* in cancers and hyperplastic diseases of the uterus instead support a role for *MUC4* in regulating cell proliferation [44, 46].

The role of *MUC4* as a regulator of differentiation and a modulator of proliferation can be explained by its C-terminal structure. It contains two epidermal growth factor (EGF)-like domains, which can interact with *ERBB2* [47]. The receptor *ERBB2* exhibits a strong kinase activity and is the preferred partner in forming dimers with other *ERBB* members [48]. The *MUC4-ERBB2* complex interacts readily with *ERBB3* in the presence of neuregulin, resulting in robust activation of the *PI3K* pathway and cell proliferation [49]. In the present study, we identified *ERBB3* mRNA to have significantly higher expression in endometrium of pregnant compared to nonpregnant sows.

The mRNA coding for the growth factor *FGF9* was significantly higher expressed in pregnant animals, and *FGF9* has been identified previously as a growth factor in human endometrium [50]. The localization is, however, different. In pigs, the strongest staining for *FGF9* was observed at the apical domain of the glandular epithelial cells; in humans, glandular epithelium only expresses the gene at low levels [50].

*FGF9* binds with high affinity to *FGFR2* and *FGFR3* [51, 52]. In the human endometrium, *FGF9* has no effect on proliferation of the epithelium despite the localization of *FGFR2* in epithelial cells [50], indicating that *FGF9* preferably acts through *FGFR3* in the human endometrium. This may also be the case in the porcine endometrium, because another fibroblastic growth factor, *FGF7*, has been identified as a likely candidate for *FGFR2*-mediated signaling [53]. Interestingly, the expression of *FGFR3* mRNA was significantly lower in the pregnant sows, and *FGFR3* staining was strongest in the glandular epithelium. This indicates the involvement of factors other than *FGF9* in the regulation of proliferation of the surface epithelium. Moreover, *FGF9* might act in an endocrine manner [54–56]. Hence, it could be speculated that an increase in secreted *FGF9* from the endometrial glands during pregnancy may not be related to actions within the endometrium but, rather, may be implicated in the embryo-maternal communication.

In conclusion, we identified 263 genes to be differentially regulated in the endometrium of pregnant versus nonpregnant sows at the time of initial placentation. Furthermore, we showed a pregnancy-specific localization of *IL11RA* to the surface epithelium of the endometrium, suggesting that *IL11* signaling may play an important role in formation of the porcine epitheliochorial placenta. We also showed that *FGF9* is



up-regulated in pregnant endometrium, whereas its receptor, *FGFR3*, is down-regulated. Combined with the localization of FGF9 to the apical cell domain of the glandular epithelium, this finding makes it intriguing to speculate that FGF9 of endometrial origin functions as an embryonic growth factor in the pig.

## ACKNOWLEDGMENT

The authors thank Danish Pig Production for arranging housing and insemination of the animals used in the present study.

## REFERENCES

- Vigano P, Mangioni S, Pompei F, Chiodo I. Maternal-conceptus cross talk—a review. *Placenta* 2003; 24(suppl B):S56–S61.
- Wolf E, Arnold GJ, Bauersachs S, Beier HM, Blum H, Einspanier R, Frohlich T, Herrler A, Hiendleder S, Kolle S, Prella K, Reichenbach HD, et al. Embryo-maternal communication in bovine—strategies for deciphering a complex cross-talk. *Reprod Domest Anim* 2003; 38:276–289.
- Geisert RD, Zavy MT, Moffatt RJ, Blair RM, Yellin T. Embryonic steroids and the establishment of pregnancy in pigs. *J Reprod Fertil Suppl* 1990; 40:293–305.
- Ziecik AJ. Old, new and the newest concepts of inhibition of luteolysis during early pregnancy in pig. *Domest Anim Endocrinol* 2002; 23:265–275.
- Waclawik A, Jabbour HN, Blitek A, Ziecik AJ. Estradiol-17beta, prostaglandin E<sub>2</sub> (PGE<sub>2</sub>), and the PGE<sub>2</sub> receptor are involved in PGE<sub>2</sub> positive feedback loop in the porcine endometrium. *Endocrinology* 2009; 150:3823–3832.
- Dantzer V. Electron microscopy of the initial stages of placentation in the pig. *Anat Embryol (Berl)* 1985; 172:281–293.
- Reynolds LP, Borowicz PP, Vonnahme KA, Johnson ML, Grazul-Bilska AT, Wallace JM, Caton JS, Redmer DA. Animal models of placental angiogenesis. *Placenta* 2005; 26:689–708.
- Cencic A, Guillomot M, Koren S, La BC. Trophoblastic interferons: do they modulate uterine cellular markers at the time of conceptus attachment in the pig? *Placenta* 2003; 24:862–869.
- Keys JL, King GJ, Kennedy TG. Increased uterine vascular permeability at the time of embryonic attachment in the pig. *Biol Reprod* 1986; 34:405–411.
- Keys JL, King GJ. Morphological evidence for increased uterine vascular permeability at the time of embryonic attachment in the pig. *Biol Reprod* 1988; 39:473–487.
- Wildman DE, Chen C, Erez O, Grossman LI, Goodman M, Romero R. Evolution of the mammalian placenta revealed by phylogenetic analysis. *Proc Natl Acad Sci U S A* 2006; 103:3203–3208.
- Carter AM, Enders AC. Comparative aspects of trophoblast development and placentation. *Reprod Biol Endocrinol* 2004; 2:46.
- Croy BA, Wessels J, Linton N, Tayade C. Comparison of immune cell recruitment and function in endometrium during development of epitheliochorial (pig) and hemochorial (mouse and human) placentas. *Placenta* 2009; 30(suppl A):S26–S31.
- Haouzi D, Mahmoud K, Fourar M, Bendhaou K, Dechaud H, De VJ, Reme T, Dewailly D, Hamamah S. Identification of new biomarkers of human endometrial receptivity in the natural cycle. *Hum Reprod* 2009; 24:198–205.
- Reese J, Das SK, Paria BC, Lim H, Song H, Matsumoto H, Knudtson KL, DuBois RN, Dey SK. Global gene expression analysis to identify molecular markers of uterine receptivity and embryo implantation. *J Biol Chem* 2001; 276:44137–44145.
- Bauersachs S, Ulbrich SE, Gross K, Schmidt SE, Meyer HH, Wenigerkind H, Vermehren M, Sinowatz F, Blum H, Wolf E. Embryo-induced transcriptome changes in bovine endometrium reveal species-specific and common molecular markers of uterine receptivity. *Reproduction* 2006; 132:319–331.
- Spencer TE, Johnson GA, Bazer FW, Burghardt RC, Palmirini M. Pregnancy recognition and conceptus implantation in domestic ruminants: roles of progesterone, interferons and endogenous retroviruses. *Reprod Fertil Dev* 2007; 19:65–78.
- Johnson GA, Bazer FW, Burghardt RC, Spencer TE, Wu G, Bayless KJ. Conceptus-uterus interactions in pigs: endometrial gene expression in response to estrogens and interferons from conceptuses. *Soc Reprod Fertil Suppl* 2009; 66:321–332.
- Murphy SP, Tayade C, Ashkar AA, Hatta K, Zhang J, Croy BA. Interferon gamma in successful pregnancies. *Biol Reprod* 2009; 80:848–859.
- R Development Core Team. R: A language and environment for statistical computing. Vienna, Austria: R Foundation for Statistical Computing; 2005.
- Edgar R, Domrachev M, Lash AE. Gene Expression Omnibus: NCBI gene expression and hybridization array data repository. *Nucleic Acids Res* 2002; 30:207–210.
- Smyth GK. Linear models and empirical Bayes methods for assessing differential expression in microarray experiments. *Stat Appl Genet Mol Biol* 2004; 3:Article3.
- Tsai S, Cassady JP, Freking BA, Nonneman DJ, Rohrer GA, Piedrahita JA. Annotation of the Affymetrix porcine genome microarray. *Anim Genet* 2006; 37:423–424.
- Hintermair V. Comparative analysis of *Bos taurus* and *Homo sapiens* DNA microarrays. Munich, Germany: LMU München; 2007. Thesis.
- Altschul SF, Gish W, Miller W, Myers EW, Lipman DJ. Basic local alignment search tool. *J Mol Biol* 1990; 215:403–410.
- Dennis G Jr, Sherman BT, Hosack DA, Yang J, Gao W, Lane HC, Lempicki RA. DAVID: Database for Annotation, Visualization, and Integrated Discovery. *Genome Biol* 2003; 4:3.
- Larsson LI, Scopsi L, Modena D, Racchetti G, Galante YM. Immunocytochemical characterization of mouse monoclonal ACTH antibodies with a note on staining conditions and control procedures. *Histochemistry* 1989; 91:115–122.
- Schauser K, Larsson LI. Programmed cell death and cell extrusion in rat duodenum: a study of expression and activation of caspase-3 in relation to C-jun phosphorylation, DNA fragmentation and apoptotic morphology. *Histochem Cell Biol* 2005; 124:237–243.
- Salamonsen LA, Dimitriadis E, Robb L. Cytokines in implantation. *Semin Reprod Med* 2000; 18:299–310.
- Sherwin JR, Smith SK, Wilson A, Sharkey AM. Soluble gp130 is up-regulated in the implantation window and shows altered secretion in patients with primary unexplained infertility. *J Clin Endocrinol Metab* 2002; 87:3953–3960.
- Ni H, Ding NZ, Harper MJ, Yang ZM. Expression of leukemia inhibitory factor receptor and gp130 in mouse uterus during early pregnancy. *Mol Reprod Dev* 2002; 63:143–150.
- Yue ZP, Yang ZM, Wei P, Li SJ, Wang HB, Tan JH, Harper MJ. Leukemia inhibitory factor, leukemia inhibitory factor receptor, and glycoprotein 130 in rhesus monkey uterus during menstrual cycle and early pregnancy. *Biol Reprod* 2000; 63:508–512.
- Cullinan EB, Abbondanzo SJ, Anderson PS, Pollard JW, Lessey BA, Stewart CL. Leukemia inhibitory factor (LIF) and LIF receptor expression in human endometrium suggests a potential autocrine/paracrine function in regulating embryo implantation. *Proc Natl Acad Sci U S A* 1996; 93:3115–3120.
- Aghajanova L, Stavreus-Evers A, Nikas Y, Hovatta O, Landgren BM. Coexpression of pinopodes and leukemia inhibitory factor, as well as its receptor, in human endometrium. *Fertil Steril* 2003; 79(suppl 1):808–814.
- Dimitriadis E, White CA, Jones RL, Salamonsen LA. Cytokines, chemokines and growth factors in endometrium related to implantation. *Hum Reprod Update* 2005; 11:613–630.
- Robb L, Li R, Hartley L, Nandurkar HH, Koentgen F, Begley CG. Infertility in female mice lacking the receptor for interleukin 11 is due to a defective uterine response to implantation. *Nat Med* 1998; 4:303–308.
- Paiva P, Salamonsen LA, Manuelpillai U, Walker C, Tapia A, Wallace EM, Dimitriadis E. Interleukin-11 promotes migration, but not proliferation, of human trophoblast cells, implying a role in placentation. *Endocrinology* 2007; 148:5566–5572.
- Paiva P, Salamonsen LA, Manuelpillai U, Dimitriadis E. Interleukin 11 inhibits human trophoblast invasion indicating a likely role in the decidual restraint of trophoblast invasion during placentation. *Biol Reprod* 2009; 80:302–310.
- Bao L, Devi S, Bowen-Shauver J, Ferguson-Gottschall S, Robb L, Gibori G. The role of interleukin-11 in pregnancy involves up-regulation of alpha2-macroglobulin gene through janus kinase 2-signal transducer and activator of transcription 3 pathway in the decidua. *Mol Endocrinol* 2006; 20:3240–3250.
- Samuel CA, Perry JS. The ultrastructure of pig trophoblast transplanted to an ectopic site in the uterine wall. *J Anat* 1972; 113:139–149.
- Ferrell AD, Malayer JR, Carraway KL, Geisert RD. Sialomucin complex (Muc4) expression in porcine endometrium during the estrous cycle and early pregnancy. *Reprod Domest Anim* 2003; 38:63–65.
- Surveyor GA, Gendler SJ, Pemberton L, Das SK, Chakraborty I, Julian J, Pimental RA, Wegner CC, Dey SK, Carson DD. Expression and steroid hormonal control of Muc-1 in the mouse uterus. *Endocrinology* 1995; 136:3639–3647.
- McNeer RR, Carraway CA, Fregien NL, Carraway KL. Characterization

- of the expression and steroid hormone control of sialomucin complex in the rat uterus: implications for uterine receptivity. *J Cell Physiol* 1998; 176:110–119.
44. Alameda F, Mejias-Luque R, Garrido M, de Bolós C. Mucin genes (MUC2, MUC4, MUC5AC, and MUC6) detection in normal and pathological endometrial tissues. *Int J Gynecol Pathol* 2007; 26:61–65.
  45. Bersinger NA, Wunder DM, Birkhauser MH, Mueller MD. Gene expression in cultured endometrium from women with different outcomes following IVF. *Mol Hum Reprod* 2008; 14:475–484.
  46. Lopez-Ferrer A, Alameda F, Barranco C, Garrido M, de Bolós C. MUC4 expression is increased in dysplastic cervical disorders. *Hum Pathol* 2001; 32:1197–1202.
  47. Carraway KL III, Rossi EA, Komatsu M, Price-Schiavi SA, Huang D, Guy PM, Carvajal ME, Fregien N, Carraway CA, Carraway KL. An intramembrane modulator of the ErbB2 receptor tyrosine kinase that potentiates neuregulin signaling. *J Biol Chem* 1999; 274:5263–5266.
  48. Graus-Porta D, Beerli RR, Daly JM, Hynes NE. ErbB-2, the preferred heterodimerization partner of all ErbB receptors, is a mediator of lateral signaling. *EMBO J* 1997; 16:1647–1655.
  49. Funes M, Miller JK, Lai C, Carraway KL III, Sweeney C. The mucin Muc4 potentiates neuregulin signaling by increasing the cell-surface populations of ErbB2 and ErbB3. *J Biol Chem* 2006; 281:19310–19319.
  50. Tsai SJ, Wu MH, Chen HM, Chuang PC, Wing LY. Fibroblast growth factor-9 is an endometrial stromal growth factor. *Endocrinology* 2002; 143:2715–2721.
  51. Hecht D, Zimmerman N, Bedford M, Avivi A, Yayon A. Identification of fibroblast growth factor 9 (FGF9) as a high affinity, heparin dependent ligand for FGF receptors 3 and 2 but not for FGF receptors 1 and 4. *Growth Factors* 1995; 12:223–233.
  52. Ornitz DM, Xu J, Colvin JS, McEwen DG, MacArthur CA, Coulier F, Gao G, Goldfarb M. Receptor specificity of the fibroblast growth factor family. *J Biol Chem* 1996; 271:15292–15297.
  53. Wollenhaupt K, Welter H, Brussow KP, Einspanier R. Regulation of endometrial fibroblast growth factor 7 (FGF-7) and its receptor FGFR2IIIb in gilts after sex steroid replacements, and during the estrous cycle and early gestation. *J Reprod Dev* 2005; 51:509–519.
  54. Miyakawa K, Hatsuzawa K, Kurokawa T, Asada M, Kuroiwa T, Imamura T. A hydrophobic region locating at the center of fibroblast growth factor-9 is crucial for its secretion. *J Biol Chem* 1999; 274:29352–29357.
  55. Revest JM, DeMoerlooze L, Dickson C. Fibroblast growth factor 9 secretion is mediated by a noncleaved amino-terminal signal sequence. *J Biol Chem* 2000; 275:8083–8090.
  56. Miyamoto M, Naruo K, Seko C, Matsumoto S, Kondo T, Kurokawa T. Molecular cloning of a novel cytokine cDNA encoding the ninth member of the fibroblast growth factor family, which has a unique secretion property. *Mol Cell Biol* 1993; 13:4251–4259.