

Optimal models in the yield analysis of new flax cultivars

Authors: Jia, Gaofeng, and Booker, Helen M.

Source: Canadian Journal of Plant Science, 98(4) : 897-907

Published By: Canadian Science Publishing

URL: <https://doi.org/10.1139/cjps-2017-0282>

BioOne Complete (complete.BioOne.org) is a full-text database of 200 subscribed and open-access titles in the biological, ecological, and environmental sciences published by nonprofit societies, associations, museums, institutions, and presses.

Your use of this PDF, the BioOne Complete website, and all posted and associated content indicates your acceptance of BioOne's Terms of Use, available at www.bioone.org/terms-of-use.

Usage of BioOne Complete content is strictly limited to personal, educational, and non - commercial use. Commercial inquiries or rights and permissions requests should be directed to the individual publisher as copyright holder.

BioOne sees sustainable scholarly publishing as an inherently collaborative enterprise connecting authors, nonprofit publishers, academic institutions, research libraries, and research funders in the common goal of maximizing access to critical research.

Optimal models in the yield analysis of new flax cultivars

Gaofeng Jia and Helen M. Booker

Abstract: Multi-environment trials are conducted to evaluate the performance of cultivars. In a combined analysis, the mixed model is superior to an analysis of variance for evaluating and comparing cultivars and dealing with an unbalanced data structure. This study seeks to identify the optimal models using the Saskatchewan Variety Performance Group post-registration regional trial data for flax. Yield data were collected for 15 entries in post-registration tests conducted in Saskatchewan from 2007 to 2016 (except 2011) and 16 mixed models with homogeneous or heterogeneous residual errors were compared. A compound symmetry model with heterogeneous residual error (CSR) had the best fit, with a normal distribution of residuals and a mean of zero fitted to the trial data for each year. The compound symmetry model with homogeneous residual error (CS) and a model extending the CSR to higher dimensions (DIAGR) were the next best models in most cases. Five hundred random samples from a two-stage sampling method were produced to determine the optimal models suitable for various environments. The CSR model was superior to other models for 396 out of 500 samples (79.2%). The top three models, CSR, CS, and DIAGR, had higher statistical power and could be used to access the yield stability of the new flax cultivars. Optimal mixed models are recommended for future data analysis of new flax cultivars in regional tests.

Key words: flax (*Linum usitatissimum* L.), variance-covariance structure, residual error, multi-environment tests, akaike information criterion.

Résumé : Les essais multi-environnementaux nous renseignent sur la performance des cultivars. Dans les analyses combinées, le modèle mixte permet de mieux analyser la variance afin d'évaluer et de comparer les cultivars. Il permet aussi de mieux composer avec des données à la structure mal équilibrée. Les auteurs voulaient établir les meilleurs modèles en recourant aux données des essais régionaux après homologation sur le lin du Saskatchewan Variety Performance Group. Ils ont rassemblé les données sur le rendement de 15 cultivars inscrits aux essais post-homologation réalisés en Saskatchewan de 2007 à 2016 (sauf en 2011) et comparé celles de 16 modèles mixtes présentant une erreur résiduelle homogène ou pas. Le modèle à symétrie composée et erreur résiduelle hétérogène (CSR) donne le meilleur ajustement, avec une distribution normale des variances résiduelles et une moyenne de zéro ajustée à la date annuelle des essais. Le modèle à symétrie composée et erreur résiduelle homogène (CS) et un modèle constituant l'extension du CSR à des dimensions supérieures (DIAGR) suivent, dans la plupart des cas. Les auteurs ont recouru à une méthode d'échantillonnage en deux temps pour obtenir cinq cents échantillons de manière aléatoire et déterminer les modèles qui conviennent le mieux à divers environnements. Le modèle CSR est supérieur aux autres dans 396 cas sur 500 (79,2 %). Les trois meilleurs modèles (CSR, CS et DIAGR) bénéficient d'une plus grande élasticité statistique et on pourrait s'en servir pour vérifier la stabilité du rendement des nouveaux cultivars de lin. Les auteurs préconisent l'usage des meilleurs modèles mixtes pour analyser les données sur les nouvelles variétés testées régionalement, à l'avenir. [Traduit par la Rédaction]

Mots-clés : lin (*Linum usitatissimum* L.), structure de la variance-covariance, erreur résiduelle, essais multi-environnementaux, critère d'information d'Akaike.

Received 18 September 2017. Accepted 26 February 2018.

G. Jia and H.M. Booker.* Crop Development Centre, Department of Plant Sciences, University of Saskatchewan, 51 Campus Drive, Saskatoon, SK S7N 5A8, Canada.

Corresponding author: Helen M. Booker (email: helen.booker@usask.ca).

*H. Booker currently serves as an Associate Editor; peer review and editorial decisions regarding this manuscript were handled by J. Mitchell Fetch.

Copyright remains with the author(s) or their institution(s). This work is licensed under a [Creative Commons Attribution 4.0 International License](https://creativecommons.org/licenses/by/4.0/) (CC BY 4.0), which permits unrestricted use, distribution, and reproduction in any medium, provided the original author(s) and source are credited.

Introduction

Flax (*Linum usitatissimum* L.) is an important oilseed and fibre crop. Oilseed flax (also called linseed) is a rich source of micronutrients, dietary fiber, and omega-3 fatty acids. Flax breeding objectives are to increase yield (yield stability), improve agronomic performance, enhance disease resistance, and improve quality characteristics (You et al. 2016). The ambition of the Canadian flax industry is to increase average yields by nearly 10% over the next decade with the help of improved agronomic management and enhanced genetics (new cultivars). Elite flax breeding lines supported for registration and new flax cultivars are evaluated in regional yield trials over a number of locations and years to determine their performance (yield and yield stability) in different agro-ecological zones of the province of Saskatchewan. The statistical methods employed to design the trials and analyze data from the regional tests to evaluate yield and yield stability need to be accurate, efficient, and informative.

New crop genotypes are often evaluated and expressed as a percentage of a designated check genotype value over a number of locations and years. This is a relatively simplistic statistical method and some limits with this traditional approach include the selection of an appropriate check genotype or genotypes. This comparison requires that check genotype(s) have consistent performance over a number of locations and years (Friesen et al. 2016). Genotypes under evaluation and check genotypes might change from year to year as well as location to location. Currently, the statistical analysis for yield data generated from flax regional performance test utilizes analysis of variance (ANOVA) (You et al. 2013). Analysis of variance takes all factors as fixed effects, assumes homogeneity of variance and the same covariance for all pairs of entries, and does not handle unbalanced data, which leads to estimates that are often inappropriate and unreliable (Hu et al. 2014). In contrast, the mixed model analysis method considers fixed and random effects in many commonly used experimental designs and correctly estimates genotype effect (G) and genotype \times environment (G \times E) interaction effects using an appropriate variance–covariance structure that can be adapted to a complicated data structure. This model allows for the presence or absence of heterogeneity or error variances among environments, heterogeneity of genotypic variances among environments, and heterogeneity of genotypic correlations between pairs of environments (Piepho 1997a, 1997b; So and Edwards 2009; Hu and Spilke 2011).

In cultivar performance tests, a common case is that some entries are evaluated for a number of sites and years and then replaced by newer entries or advanced lines. As well, poor growing environments in certain locations or years lead to missing observations. Analysis of variance is often unable to estimate least squares means and compare cultivar performance for unbalanced data,

whereas a mixed model analysis can provide an appropriate analysis producing correct results.

Homogeneity of variance and covariance are unrealistic in many circumstances. More complex and informative mixed models can account for variance and covariance heterogeneity in multi-environment trials (MET; Kempton 1984; Piepho 1998a, 1998b). The mixed model has been shown to be more efficient than the ANOVA model for estimating the accuracy of varietal differences. In practical applications, the choice of the optimal model depends on the experimental design, environments, genetic pattern of species or traits, required precision, and the type of desired information (So and Edwards 2009).

The mixed model has been applied to the analysis of cultivar trial data for many crops such as soybean (Andrade et al. 2016), corn (So and Edwards 2009; Hu and Spilke 2011), wheat (Friesen et al. 2016), rape (Hu et al. 2014), and canola (Beeck et al. 2010). Results are not always consistent due to differences in crop cultivars, trial environments, adopted variance–covariance structure of models, and data sufficiency. A great deal of theoretical research has been conducted with respect to multi-environment statistical methods (Finlay and Wilkinson 1963; Eberhart and Russell 1966; Shukla 1972; Hildebrand 1984; Piepho 1997b; Smith et al. 2001a, 2001b; Basford et al. 2004; Smith et al. 2005; Littell et al. 2006; Coe 2007; Hu and Spilke 2011; Hu et al. 2014). Even though no one-size-fits-all model can be applied to all situations, the general suggestion is that more models must be tested and compared to find the optimal one; indeed, one or a few models might be preferred to deal with multiple environments for a certain crop. Simulated datasets used to compare mixed models might not fit all practical cases well for MET (Walker et al. 2011; Ferraudo and Perecin 2014). Some models have been employed to study a certain number of real datasets but, because the number of datasets was limited, drawing generic conclusions on the optimal models for some crops was difficult. A selection approach for models could be established based on testing a variety of models with different variance–covariance structures and using multi-year–location trial data and enough samples with real data for a particular crop.

In cultivar trials, the residual error variance commonly differs across environments due to changes in growing environments such as soil, weather, field-scale experimental conditions, and management across locations and years. The heterogeneity of residual error variances in analytical models has been considered in a number of studies (Casanoves et al. 2005; So and Edwards 2009; Hu and Spilke 2011; Hu 2014; Hu et al. 2014). Despite different options for appropriate models, heterogeneity of error variances was prevalent and prominent in MET and affected parameter estimates of models and the stability of the ranking of genotypes. Models with heterogeneous residual error variances fit the trial data better and gave smaller standard errors of

model parameter estimates than their homogeneous counterparts. Models with heterogeneous residual error variances were a good alternative analysis for genotype stability in MET (So and Edwards 2009; Hu and Spilke 2011; Hu 2014; Hu et al. 2014).

The purpose of this study was to explore the potential advantages of the mixed model method and find optimal models with preferred variance–covariance structures based on a sufficient number of practical datasets of new registered flax cultivars in post-registration (regional) testing in Saskatchewan. A total of 16 models with different variance–covariance structures were compared. A two-stage sampling technique was used for diverse environments with variable years and locations for nine years and up to 10 locations. A total of 500 samples were used to test the models and estimate and predict the main effect of genotype yield and genotype ranking. The results led to recommendations for optimal mixed models for the analysis of regional trial data and assessment of the performance of new flax cultivars.

Materials and Methods

Weather data

Historical agro-climatic maps can be assessed from Agriculture and Agri-Food Canada (AAFC) at: <http://www.agr.gc.ca/eng/programs-and-services/list-of-programs-and-services/drought-watch/agroclimate-maps/?id=1463574557847>.

Experimental design

Flax yield data generated from post-registration trials conducted in Saskatchewan from 2007 to 2016 (except 2011) were used. Fifteen new cultivars were grown in up to 10 locations in different years. New cultivar evaluation was conducted in a complete random block design with three replications at each location.

Each entry was planted in seven-row plots each 2 m long and 1.5 m wide. CDC Bethune was employed as a check cultivar for all year–location trials. The center five rows of each plot were collected for grain yield assessment. Yield was adjusted to grams per square meter. As is common in crop genotype multi-year–location trials, the dataset was unbalanced as some entries were evaluated for a number of sites and years and then replaced by newer entries, or entries were missing due to poor growing conditions or other reasons. All genotypes were represented by data from at least two years and two locations or else excluded from further analysis. As such, at least two years of data were available for all trial locations. A total of 1907 data points were included in the analysis.

Mixed models

The statistical models evaluated in this study were based on a mixed linear model:

$$y_{ij} = \mu + \alpha_i + \beta_j + (\alpha\beta)_{ij} + \varepsilon_{ij}$$

where y_{ij} is the yield of the i th cultivar in the j th environment, μ is the general mean, α_i is the effect of the i th

cultivar, β_j is the effect of the j th environment, $(\alpha\beta)_{ij}$ is the interaction effect of the i th cultivar in the j th environment, and ε_{ij} is the residual error. The factor α_i is considered fixed, while β_j , $(\alpha\beta)_{ij}$, and ε_{ij} are treated as random. In our model, the effect μ contains both fixed cultivar effects as well as the random effects of the environment and the cultivar \times environment interaction.

In the ANOVA model, β_j and $(\alpha\beta)_{ij}$ are assumed to be independent and normally distributed with variances σ_β^2 and $\sigma_{\alpha\beta}^2$, respectively, which implies that all cultivars have the same variance over environments [i.e., $\text{Cov}(\mu_{ij}, \mu_{i'j}) = \sigma_\beta^2$]. Genotypic variance and covariance between pairs of environments are homogeneous. This corresponds to the compound symmetry (CS) variance–covariance structure in the mixed model. To simplify the mathematical expression, a 3×3 variance–covariance matrix was taken as the general form, which was simply extended to higher dimensions:

CS variance–covariance structure:

$$\text{Var} \begin{pmatrix} \mu_{1j} \\ \mu_{2j} \\ \mu_{3j} \end{pmatrix} = \begin{pmatrix} \sigma_1^2 & \rho & \rho \\ \rho & \sigma_1^2 & \rho \\ \rho & \rho & \sigma_1^2 \end{pmatrix}$$

Assuming variance heterogeneity among cultivars, the higher dimension (DIAG) structure was used in mixed models:

DIAG variance–covariance structure:

$$\text{Var} \begin{pmatrix} \mu_{1j} \\ \mu_{2j} \\ \mu_{3j} \end{pmatrix} = \begin{pmatrix} \sigma_1^2 & \rho & \rho \\ \rho & \sigma_2^2 & \rho \\ \rho & \rho & \sigma_3^2 \end{pmatrix}$$

Some pairs of cultivars responded more similarly in given environments than others. This implies a correlation between cultivar performance and environment. In this situation, a correlation variance–covariance structure (COR) was considered in the analysis models:

COR variance – covariance structure:

$$\text{Var} \begin{pmatrix} \mu_{1j} \\ \mu_{2j} \\ \mu_{3j} \end{pmatrix} = \begin{pmatrix} \sigma_1^2 & \rho\sigma_1\sigma_2 & \rho\sigma_1\sigma_3 \\ \rho\sigma_1\sigma_2 & \sigma_2^2 & \rho\sigma_2\sigma_3 \\ \rho\sigma_1\sigma_3 & \rho\sigma_2\sigma_3 & \sigma_3^2 \end{pmatrix}$$

Data points close in time are assumed to be more highly correlated than data points distant in time. An autocorrelation model (ARMA) was used to fit in trial data for years:

ARMA variance–covariance structure(1st order):

$$\text{Var} \begin{pmatrix} \mu_{1j} \\ \mu_{2j} \\ \mu_{3j} \end{pmatrix} = \begin{pmatrix} \sigma_1^2 & \rho^1 & \rho^2 \\ \rho^1 & \sigma_2^2 & \rho^1 \\ \rho^2 & \rho^1 & \sigma_3^2 \end{pmatrix}$$

Table 1. Model description and notation.

Variance–covariance structure	Notation	
	Homogeneous residual error	Heterogeneous residual error
Compound symmetry	CS	CSR
Diagonal	DIAG	DAIGR
Correlation	COR	CORR
Autoregressive	ARMA	ARMAR
Factor analysis (one component)	FA1	FA1R
Factor analysis (two component)	FA2	FA2R
Factor analysis (three component)	FA3	FA3R
Unstructured	US	USR

A factor analytic (FA) variance structure can be used to implement complicated data analysis and depends on the decomposition of an unstructured variance–covariance matrix in the mixed model. The FA structures are fitted with different numbers of components. Three components (FA1, FA2, and FA3) were applied in this study. The simple FA1 model with one component is:

FA1 variance–covariance structure:

$$\text{Var} \begin{pmatrix} \mu_{1j} \\ \mu_{2j} \\ \mu_{3j} \end{pmatrix} = \begin{pmatrix} \sigma_1^2 + \sigma_\delta^2 & \rho\sigma_1\sigma_2 & \rho\sigma_1\sigma_3 \\ \rho\sigma_1\sigma_2 & \sigma_2^2 + \sigma_\delta^2 & \rho\sigma_2\sigma_3 \\ \rho\sigma_1\sigma_3 & \rho\sigma_2\sigma_3 & \sigma_3^2 + \sigma_\delta^2 \end{pmatrix}$$

One of the most general variance–covariance forms is that no limits are imposed on the variance and covariance structure; variance and covariance are allowed to vary freely. This is a so-called unstructured model (US), and seems realistic in most cases. Because many parameters need to be estimated for this structure, it sometimes does not fit datasets well. The unstructured model has a matrix form in mixed models as follows:

US variance–covariance structure:

$$\text{Var} \begin{pmatrix} \mu_{1j} \\ \mu_{2j} \\ \mu_{3j} \end{pmatrix} = \begin{pmatrix} \sigma_1^2 & \sigma_{12} & \sigma_{13} \\ \sigma_{21} & \sigma_2^2 & \sigma_{23} \\ \sigma_{31} & \sigma_{32} & \sigma_3^2 \end{pmatrix}$$

Heterogeneity of residual error variances directly affects the analysis of trait performance. Models allowing error variance heterogeneity are often more practical and have better fitness. In this study, all models considered two cases: heterogeneous ($\sigma_{e1}^2 \neq \sigma_{e2}^2 \neq \sigma_{e3}^2$) and homogeneous ($\sigma_{e1}^2 = \sigma_{e2}^2 = \sigma_{e3}^2$) environments. The names and notations for all of the mixed linear models with homogeneous and heterogeneous environments are listed in [Table 1](#).

Table 2. Sample composition of two-stage random sampling.

No. of years	No. of samples	Mean no. of locations	Sample mean size	Range of sample size
5	116	25	780	544–1045
6	129	37	977	792–1164
7	128	49	1180	1013–1293
8	127	59	1369	1199–1499

Model assessment

The choice of model directly affects the assessment of cultivar performance. Sixteen models with different variance–covariance structures were compared using the Akaike information criterion (AIC) ([Oman 1991](#); [Wolfinger 1993](#)), for which a lower value indicates a better model. The CS model was taken as the baseline and the chi-squared test was used to statistically assess the fit of the two models, where

$$\chi^2 = (-2 \log -\text{Likelihood}_0) - (-2 \log -\text{Likelihood}_1)$$

and

$$\text{df} = \text{Number of parameters}_0 - \text{Number of parameters}_1.$$

General data analysis was conducted using R packages and Python, and the models were fitted using ASReml-R v3.0 and ASRemlPlus v4.0 ([Bulter et al. 2007](#)).

Two-stage sampling

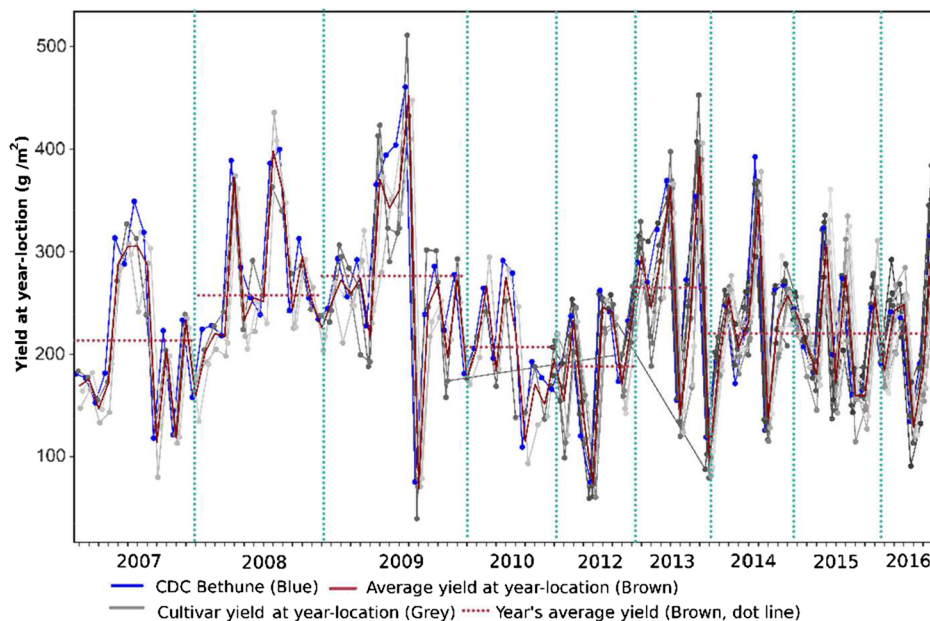
Two-stage random sampling was employed; the first stage samples were randomly produced from those that had a minimum of five trial years and the second stage sampled by location where there was at least two locations for two years. Five hundred samples were finally produced, with an average sample size ranging from 780 to 1369 ([Table 2](#)).

Results

Characteristics of the post-registration flax cultivar dataset

The yield varied greatly for new flax cultivars in the post-registration testing across year–location environments ([Fig. 1](#)). The highest average and the greatest range of yield occurred in 2009, the lowest average yield was in 2012, and the average yield was relatively stable from 2014 to 2016. The pattern of change in yield was similar for new cultivars but the response to environment (location and year) was complex. Moreover, there were interactions between cultivars and environments. Year–location environments had a substantial impact on yield performance. The dataset was unbalanced because of new entries added, older entries removed, or missing observations across locations and years. This meant that

Fig. 1. Fluctuation in yield for new flax cultivars evaluated in post-registration MET (2007–2016; no trial conducted in 2011).



the number of entries as well as the new crop genotypes tested each year varied. The yield variance was not homogeneous in MET and traditional linear models were unable to deal with the unbalanced and heterogeneous trial dataset.

Estimation of residual error variance for a single year–location environment

The residual error variance for each year–location environment was estimated using mixed model analysis (Fig. 2). The error variance was estimated to be 5195.39 at Watrous, SK, in 2013, which was over 880 times larger than the error variance at Saskatoon, SK, in 2007. The residual error was not homogeneous and thus models that correctly estimate error variance need to be considered. The mixed model allowed for heterogeneous error variance and could handle the complex data in MET and correctly estimate residual error variance.

Assessment of mixed models with different variance–covariance structures

CSR was the best mixed model with the smallest AIC value (12 068.51) for the post-registration flax cultivars dataset (Table 3). DIAGR was the next best model with an AIC of 12 075.44. The CS mixed model had relatively good performance but the CSR and DIAGR models fit the data comparatively better ($p = 3.03 \times 10^{-5}$ and $p = 8.05 \times 10^{-5}$, respectively). CSR performed significantly better than DIAGR ($p = 0.03706$).

CSR model performance diagnosis

Model performance was diagnosed using standardized residuals, Q–Q plots, and predicted value distribution. Among 1907 data points, 78 cases (4.1%) had standardized residuals with an absolute value >2.0 for

the CSR model. Q–Q plots highlight deviations from normality. For datasets with a good normal distribution, most points are located on the diagonal line. The CSR model fit the MET dataset with very close to a normal distribution for all years (Fig. 3). The residual plot exhibited a random array of dots evenly dispersed around the zero line for all years (Fig. 4). The CSR model best represented the complete trial information for all years and locations and fit the trial data and estimated the residual errors without bias.

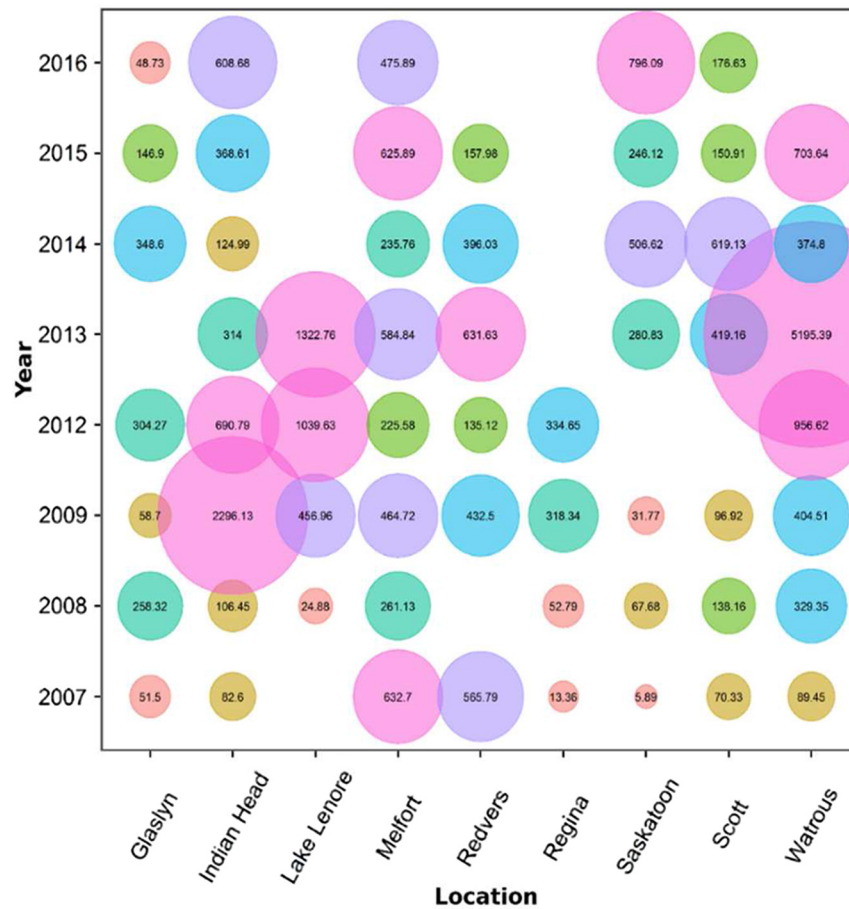
Cultivar ranking with the application of 16 models

The ranking of new flax cultivars in terms of yield and yield stability across multiple environments is important. Figure 5 shows cultivar rank based on the different models. All models had a similar pattern and the rankings were highly correlated. The CSR and DIAGR models exhibited the best performance and generated a consistent cultivar order. All models resulted in similar estimation of cultivars with lower rankings. The order of cultivars with moderate yield levels was uncertain when models with different variance–covariance structures were applied. The relative ranking of the check cultivar CDC Bethune has a large impact on the assessment of new flax cultivar regional testing; here, its rank varied from second to fifth depending upon the model applied. Overall, the mixed model analysis allows for a more equitable comparison than ANOVA amongst new and old cultivars across locations and years in the Saskatchewan Flax Variety Performance Test.

Mixed model performance for multiple samples with variable environments

While one model with the best performance was considered, the CSR model was the optimal model, with

Fig. 2. Residual error variance for each year-location.



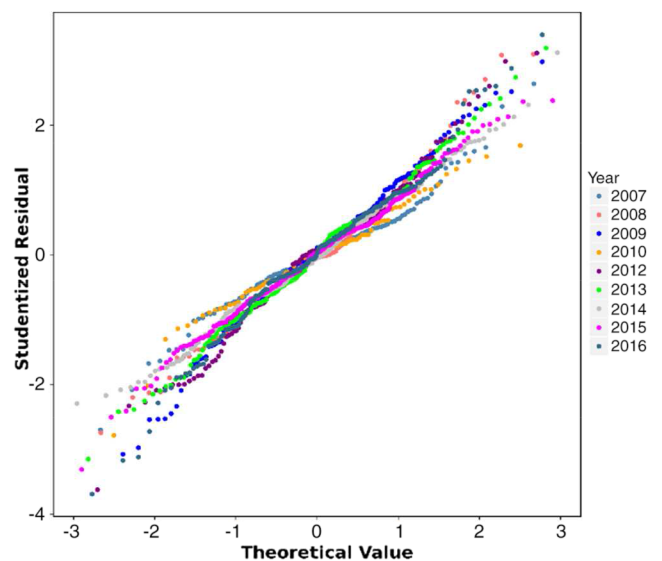
The circle size is proportional to residual error variance

Table 3. Akaike information criterion (AIC) value for mixed models with different variance-covariance structure.

Model	AIC	
	Homogeneous error variance	Heterogeneous error variance
CS(R)	12085.09	12068.51 ($p = 3.03 \times 10^{-5}$)
DIAG(R)	12091.83	12075.44 ($p = 8.05 \times 10^{-5}$)
COR(R)	12707.31	12935.32
FA1(R)	12100.14	12097.40
FA2(R)	12161.89	12100.75
FA3(R)	—	12100.14
ARMA(R)	12675.56	12921.20
US(R)	13033.10	12921.20

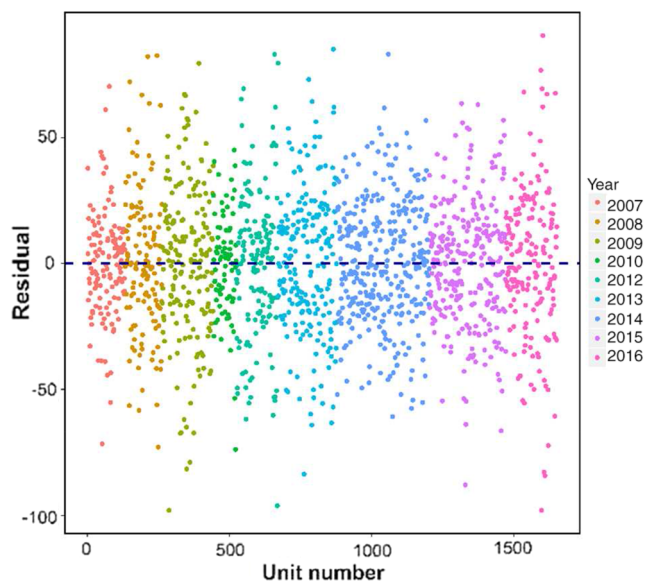
396 times among the 500 samples (79.2%) (Table 4). The CS model occurred 58 times (11.6%) as the best performance and the DIAGR model 27 times (5.4%). If the top three models were considered as potential preferred models, the CSR, CS, and DIAGR models best fit the dataset with similar frequency. Given the broad environmental variance across years and locations for the flax

Fig. 3. Q-Q plot for the estimation of residual error normal distribution by the CSR model.



cultivars tested, the CSR, CS, and DIAGR models can be considered to apply with the best fit in the analysis of flax trial data.

Fig. 4. Scatter plot of residual error values for each year using the CSR model.



Estimates of the statistical power of different mixed models

Cultivar was taken as a fixed effect factor and the Wald test indicated the significance of the statistical test among the entries (cultivars) in regional performance testing. For the CSR model, 425 out of 500 samples (85%) showed high statistical significance among the entries (cultivars) (Table 5). Only 12 samples were statistically insignificant with p values >0.05 . Thus, the CSR model had the greatest statistical power to distinguish differences between entries (cultivars) in the regional trials. The DIAGR, CS, and DIAG mixed models had similar results.

Yield rank of check cultivar CDC Bethune in 500 samples

Results were quite divergent, with different models used to assess the new crop genotypes for the 500 datasets. The check cultivar CDC Bethune, which entered in the trial every year, typically varied from first to fifth in rank depending upon the model used (Fig. 6). The CSR and DIAGR models ranked CDC Bethune from third to fifth but typically in fourth place. The CS, DIAG, FA1, FA2, and FA3 models produced similar results to the CSR and DIAGR models. The COR, US, FA1R, and FA2R models placed CDC Bethune from first to fourth for most samples. The CORR, FA3R, ARMA, ARMAR, and USR models did not provide a stable assessment with respect to the rank of CDC Bethune. The position of the check cultivar in the order directly affects the cultivar assessment system.

Figure 7 displays the cultivar ranks estimated using the CSR model for 500 samples. Some cultivars had a stable order in all samples, such as AAC Bravo (mostly ninth), CDC Bethune (around fourth), CDC Glas (first to

third), CDC Neela (first to fourth), CDC Plava (mostly sixth), CDC Sorrel (first or second), FP2388 (ninth or tenth), NulinVT50 (eleventh), and WestLin71 (twelfth). Cultivars CDC Sanctuary and WestLin72 were quite affected by environment, with the rank being variable in response to changes in location or year. This result shows that cultivar order can be used to assess cultivar stability in MET when applying an optimal mixed model for analysis.

Discussion

Crop genotypes are evaluated in MET to predict and recommend preferred cultivars or breeding lines to producers. Cultivar performance has traditionally been expressed as a percentage of a designated check genotype value for each site–year for new flax genotypes in regional trials. This is an overly simplistic statistical method and also unreliable because of the changes in performance of the check genotype and its stability in MET. Analysis of variance has been the primary analytical approach to analyze data from multi-year–location trials. Because ANOVA takes all factors as fixed effects and assumes variance homogeneity and the same covariance for all pairs of varieties, it is not practical for assessment of new flax cultivars in regional trials. In addition, the working datasets are often incomplete and unbalanced due to the addition of new entries, removal of obsolete entries, or unforeseen circumstances causing missing observations. It is difficult using ANOVA to analyze such complicated data and make the correct assessment or estimation. Mixed model analysis is superior to the traditional approach for unbalanced and multi-year–location data analysis. This study indicates that the CSR model has the best characteristics for the analysis of post-registration flax cultivar trial data. The DIAG, CS, and DIAGR models are good alternatives in some environments. These four models could be used to fit the data from flax regional trials.

This study demonstrated the large fluctuation in residual error variance across multi-year–location environments. Ignoring error variance heterogeneity in MET might result in inflation or deflation of statistical type I error when estimating genotype effects and inefficient estimates of model parameters for genotype stability evaluation. Whether or not the heterogeneity of error variances is considered in the analysis procedures considerably impacts the statistical test results regarding genotype main effects, especially in the case of random environment main effects and genotype \times environment interaction effects. Cultivar assessment and recommendations depend upon the estimation of genotype main effect. In this study, the CS model with heterogeneous error variances (CSR model) had the best statistical significance for the estimation of cultivar main effect; only 12 out of 500 samples (2.4%) were statistically insignificant for cultivar main effects. Good statistical power was also evident for both the CSR and DIAGR models.

Fig. 5. Yield rank of cultivars with different mixed models.

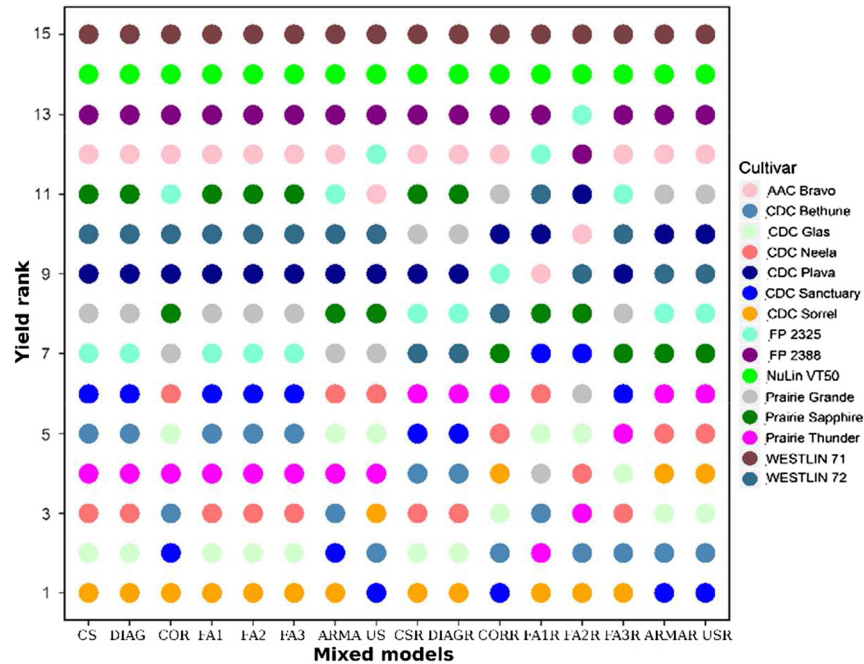


Table 4. Sample frequency for models with the best performance.

Rank	Model with best performance			Top three models		
	Model	No. of samples	Percentage (%)	Model	No. of samples	Percentage (%)
1	CSR	396	79.2	CSR	484	32.5
2	CS	58	11.6	CS	422	28.4
3	DIAGR	27	5.4	DIAGR	413	27.8
4	FA1	7	1.4	DIAG	62	4.2
5	FA3	5	1.0	FA1	44	2.9
6	DIAG	2	0.4	FA2	35	2.4
7	FA2R	2	0.4	FA3	15	1.0
8	FA3R	2	0.4	FA2R	12	0.8

Table 5. Wald tests on data analysis from mixed models.

Model	p value							
	Homogeneous error variance				Heterogeneous error variance			
	>0.05	(0.01–0.05)	(0.001–0.01)	≤0.001	>0.05	(0.01–0.05)	(0.001–0.01)	≤0.001
CS(R)	29	16	45	410	12	21	27	425
DIAG(R)	29	18	43	410	16	22	30	421
COR(R)	95	70	113	222	261	133	78	28
FA1(R)	103	69	116	212	259	135	76	30
FA2(R)	30	20	45	404	107	58	79	255
FA3(R)	34	26	45	388	83	37	59	319
ARMA(R)	46	29	49	369	79	27	28	358
UN(R)	127	95	141	138	262	133	78	28

Which models best fit the crop genotypes in MET? Inconsistencies in many studies are often due to different crop species, trial years and locations, field operation and management, and unknown factors.

So and Edwards (2009) found that the best model was one with some level of heterogeneity in the covariance structure and the most important level of heterogeneity was the residual error variance in the maize trials. Only

Fig. 6. Yield rank of check cultivar CDC Bethune using different mixed models among 500 samples.

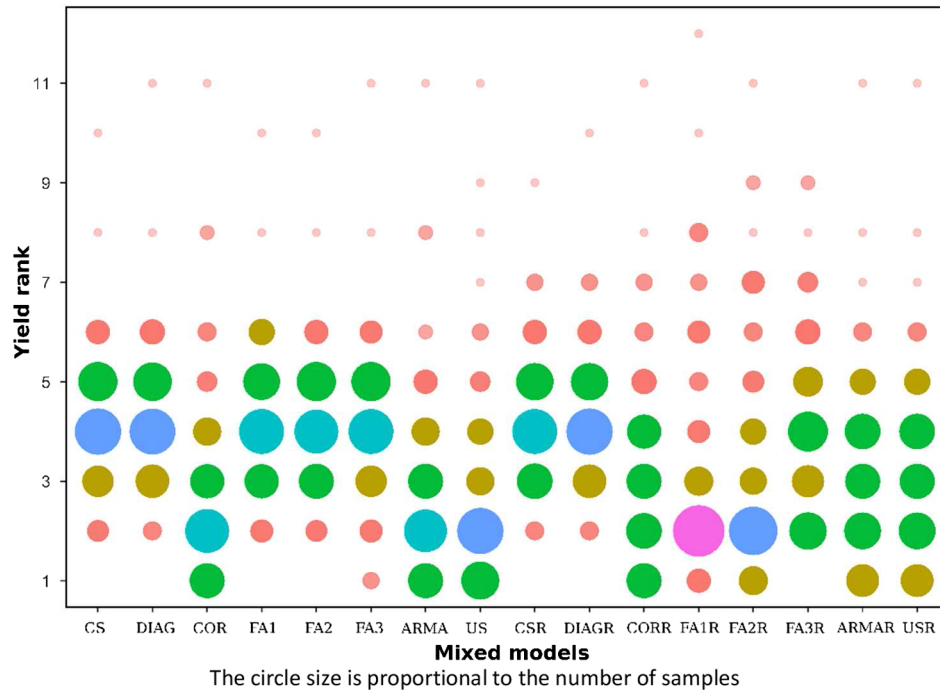
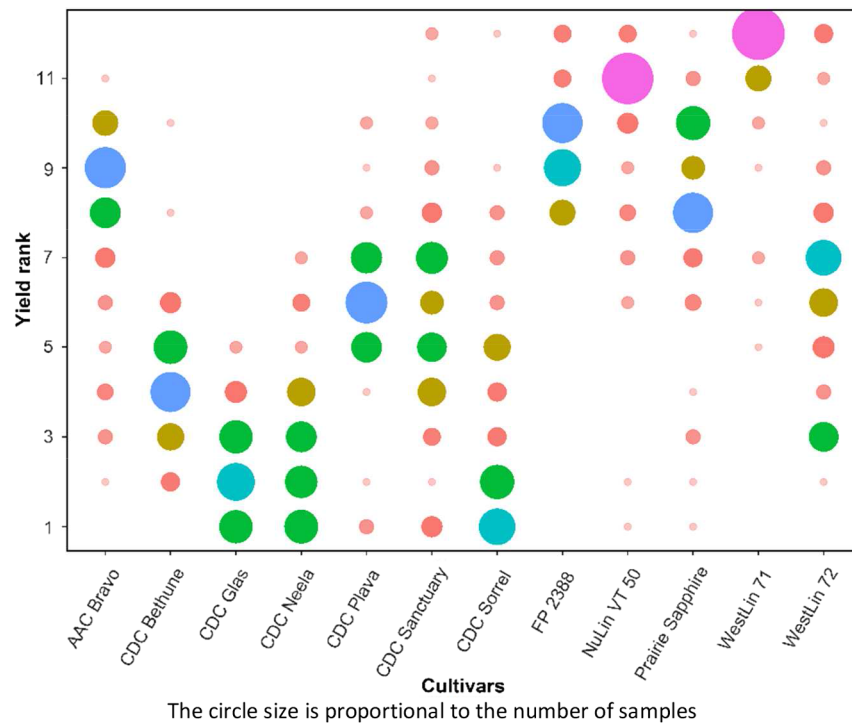


Fig. 7. Assessment of cultivar order using the CSR model among 500 samples.



six out of 65 sets of data had the best performance according to the AIC when considering homogeneous error variances among environments in their study. Thus, heterogeneous error variances should be taken into consideration in analysis of MET data.

The unstructured model without any parameter limits is generally taken as the best model, although is not favored by some researchers (So and Edwards 2009; Hu and Spilke 2011). Although an unstructured model is certainly the most realistic in the majority of cases and

should have good performance for fitting practical data against simpler structures, the disadvantage is the large number of parameters that need to be estimated. Based on the parsimony principle, it was not a good fit for the trial data in this study. Other variance–covariance structures were specific forms of the unstructured model with restrictions imposed and, in most cases, these are more suitable for practical crop trial data. [Hu et al. \(2014\)](#) point out that models with heterogeneous residual error variances fit the trial data better and gave (with a 2.1%–8.4% reduction) smaller standard error of model parameter estimates than their homogeneous counterparts. Mixed, AMMI, and Eberhart–Russel models have been used to study genotype \times environment interactions in sugarcane, where the mixed model exhibited higher sensitivity in 63 simulated cases representing different conditions ([Ferraudo and Perecin 2014](#)). Only a few of the FA models in this study had the best performance. The CS model with homogeneous error variance was not the worst model despite the strict structure and parameter limits. In addition, models with fewer parameters and a simpler structure were more suitable to implement on the limited number of datasets than other unfitted models.

Although, the model statement includes the environment effect (β_j) and the interaction effect of genotypes and environment ($\alpha\beta_{ij}$). Environment involves many factors such as location, field topography, soil, climate (precipitation, cumulative temperature, and day length), and site management. In this study, it was not possible to ascertain the environmental and (or) management factors that may have been important to the variation in yield of flax. [Zhang et al. \(2014\)](#) utilizes structural equation modelling (SEM) to relate multiply phenotypic traits in flax accessions with seed yield; a similarly aligned study conducted with this dataset could determine the main yield drivers in flax by relating historical crop yield data with weather data (for sites where this data is available).

Conclusion

The mixed model is suitable for the analysis of complicated data in MET. The choice of optimal model relies on varying assumptions and variance–covariance structures. Residual error variances should be included in the data analysis. The CSR model best fits the flax post-registration trial dataset studied herein and had the highest statistical power. Overall, CSR, DIAGR, and CS are the preferred variance–covariance models and are recommended for future data analysis of new flax cultivars in regional tests.

Acknowledgements

The research project was funded by the Agriculture Development Fund, Province of Saskatchewan, the Western Grains Research Foundation, and Saskatchewan Flax Development Commission.

References

- Andrade, A.C., Silva, A.J., Ferraudo, A.S., Unêda-Trevisoli, S.H., and Mauro, A.O. 2016. Strategies for selecting soybean genotypes using mixed models and multivariate approach. *Afr. J. Agric. Res.* **11**(1): 23–31. doi:[10.5897/AJAR2015.9715](#).
- Basford, K.E., Federer, W.T., and DeLacy, I.H. 2004. Mixed model formulations for multi-environment trials. *Agron. J.* **96**(1): 143–147. doi:[10.2134/agronj2004.0143](#).
- Beeck, C.P., Cowling, W.A., Smith, A.B., and Cullis, B.R. 2010. Analysis of yield and oil from a series of canola breeding trials. Part I. Fitting factor analytic mixed models with pedigree information. *Genome*, **53**(11): 992–1001. doi:[10.1139/G10-051](#). PMID:[21076515](#).
- Bulter, D.G., Cullis, B.R., Gilmour, A.R., and Gogel, B.J. 2007. Analysis of mixed models for S language environments: ASReml-R reference manual, NSW Department of Primary Industries, Orange, Australia.
- Casanoves, F., Macchiavelli, R., and Balzarini, M. 2005. Error variation in multi-environment peanut trials: within-trial spatial correlation and between-trial heterogeneity. *Crop Sci.* **45**(5): 1927–1933. doi:[10.2135/cropsci2004.0547](#).
- Coe, R. 2007. Analysing data from participatory on-farm trials. *Afr. Stat. J.* **4**: 89–112.
- Eberhart, S.A., and Russell, W.A. 1966. Stability parameters for comparing varieties. *Crop Sci.* **6**(1): 36–40. doi:[10.2135/cropsci1966.0011183X000600010011x](#).
- Ferraudo, G.M., and Perecin, D. 2014. Mixed model, AMMI and Eberhart-Russel comparison via simulation on genotype \times environment interaction study in sugarcane. *Appl. Math.* **5**: 2107–2119. doi:[10.4236/am.2014.514205](#).
- Finlay, K.W., and Wilkinson, G.N. 1963. Analysis of adaptation in a plant-breeding programme. *Aust. J. Agric. Res.* **14**(6): 742–754. doi:[10.1071/AR9630742](#).
- Friesen, L.F., Brule-Babel, A.L., Crow, G.H., and Rothenburger, P.A. 2016. Mixed model and stability analysis of spring wheat genotype yield evaluation data from Manitoba, Canada. *Can. J. Plant Sci.* **96**(2): 305–320. doi:[10.1139/cjps-2015-0252](#).
- Hildebrand, P.E. 1984. Modified stability analysis of farmer managed, on-farm trials. *Agron. J.* **76**(2): 271–274. doi:[10.2134/agronj1984.00021962007600020023x](#).
- Hu, X.Y. 2014. Combined yield comparison and stability evaluation of rape genotypes using the mixed model. *Field Crops Res.* **167**: 11–18. doi:[10.1016/j.fcr.2014.07.001](#).
- Hu, X.Y., and Spilke, J. 2011. Variance-covariance structure and its influence on variety assessment in regional crop trials. *Field Crops Res.* **120**(1): 1–8. doi:[10.1016/j.fcr.2010.09.015](#).
- Hu, X.Y., Yan, S.W., and Li, S.L. 2014. The influence of error variance variation on analysis of genotype stability in multi-environment trials. *Field Crops Res.* **156**: 84–90. doi:[10.1016/j.fcr.2013.11.001](#).
- Kempton, R.A. 1984. The use of biplots in interpreting variety by environment interactions. *J. Agric. Sci.* **103**(1): 123–135. doi:[10.1017/S0021859600043392](#).
- Littell, R.C., Milliken, G.A., Stroup, W.W., Wolfinger, R.D., and Schabenberger, O. 2006. SAS for mixed models. 2nd ed. SAS Institute, Inc., Cary, NC.
- Oman, S.D. 1991. Multiplicative effects in mixed model analysis of variance. *Biometrika*, **78**: 729–739. doi:[10.1093/biomet/78.4.729](#).
- Piepho, H.P. 1997a. Analyzing genotype-environment data by mixed models with multiplicative terms. *Biometrics*, **53**(2): 761–766. doi:[10.2307/2533976](#).
- Piepho, H.P. 1997b. Mixed models with multiplicative terms for cultivar trial data. *Adv. Biom. Genet.* 215–220.
- Piepho, H.P. 1998a. Empirical best linear unbiased prediction in cultivar trials using factor-analytic variance-covariance

- structures. *Theor. Appl. Genet.* **97**(1–2): 195–201. doi:[10.1007/s001220050885](https://doi.org/10.1007/s001220050885).
- Piepho, H.P. 1998b. Methods for comparing the yield stability of cropping systems — a review. *J. Agron. Crop Sci.-Zeitschrift Fur Acker Und Pflanzenbau*, **180**(4): 193–213. doi:[10.1111/j.1439-037X.1998.tb00526.x](https://doi.org/10.1111/j.1439-037X.1998.tb00526.x).
- Shukla, G.K. 1972. Some statistical aspects of partitioning genotype environmental components of variability. *Heredity*, **29**: 237–245. doi:[10.1038/hdy.1972.87](https://doi.org/10.1038/hdy.1972.87). PMID:[4507945](https://pubmed.ncbi.nlm.nih.gov/4507945/).
- Smith, A., Cullis, B., and Gilmour, A. 2001a. The analysis of crop variety evaluation data in Australia. *Aust. N. Z. J. Stat.* **43**(2): 129–145. doi:[10.1111/1467-842X.00163](https://doi.org/10.1111/1467-842X.00163).
- Smith, A., Cullis, B., and Thompson, R. 2001b. Analyzing variety by environment data using multiplicative mixed models and adjustments for spatial field trend. *Biometrics*, **57**(4): 1138–1147. doi:[10.1111/j.0006-341X.2001.01138.x](https://doi.org/10.1111/j.0006-341X.2001.01138.x).
- Smith, A., Cullis, B., and Thompson, R. 2005. The analysis of crop cultivar breeding and evaluation trials: an overview of current mixed model approaches. *J. Agric. Sci.* **143**: 449–462. doi:[10.1017/S0021859605005587](https://doi.org/10.1017/S0021859605005587).
- So, Y.S., and Edwards, J. 2009. A comparison of mixed-model analyses of the Iowa crop performance test for corn. *Crop Sci.* **49**(5): 1593–1601. doi:[10.2135/cropsci2008.09.0574](https://doi.org/10.2135/cropsci2008.09.0574).
- Walker, C.A., Pita, F., and Campbell, K.G. 2011. Comparison linear mixed models for multiple environment plant breeding trials. 190–208.
- Wolfinger, R.D. 1993. Covariance structure selection in general mixed models. *Commun. Stat-Simul.* **22**(28): 1079–1106. doi:[10.1080/03610919308813143](https://doi.org/10.1080/03610919308813143).
- You, F.M., Duguid, S.D., Thambugala, D., and Cloutier, S. 2013. Statistical analysis and field evaluation of the type 2 modified augmented design (MAD) in phenotyping of flax (*Linum usitatissimum*) germplasms in multiple environments. *AJCS*, **7**(11): 1789–1800.
- You, F.M., Duguid, S.D., Lam, I., Cloutier, S., Rashid, K.Y., and Booker, H.M. 2016. Pedigrees and genetic base of flax cultivars registered in Canada. *Can. J. Plant Sci.* **96**(5): 837–852. doi:[10.1139/cjps-2015-0337](https://doi.org/10.1139/cjps-2015-0337).
- Zhang, T., Lamb, E.G., Soto-Cerda, B., Duguid, S., Cloutier, S., Rowland, G., Diederichsen, A., and Booker, H. 2014. Structural equation modeling of the Canadian flax (*Linum usitatissimum* L.) core collection for multiple phenotypic traits. *Can. J. Plant Sci.* **94**: 1325–1332. doi:[10.4141/cjps-2014-158](https://doi.org/10.4141/cjps-2014-158).