



**A Revision of the North American Spider Genus
Anachemmis Chamberlin (Araneae, Tengellidae)**

Authors: PLATNICK, NORMAN I., and UBICK, DARRELL

Source: American Museum Novitates, 2005(3477) : 1-20

Published By: American Museum of Natural History

URL: [https://doi.org/10.1206/0003-0082\(2005\)477\[0001:AROTNA\]2.0.CO;2](https://doi.org/10.1206/0003-0082(2005)477[0001:AROTNA]2.0.CO;2)

BioOne Complete (complete.BioOne.org) is a full-text database of 200 subscribed and open-access titles in the biological, ecological, and environmental sciences published by nonprofit societies, associations, museums, institutions, and presses.

Your use of this PDF, the BioOne Complete website, and all posted and associated content indicates your acceptance of BioOne's Terms of Use, available at www.bioone.org/terms-of-use.

Usage of BioOne Complete content is strictly limited to personal, educational, and non - commercial use. Commercial inquiries or rights and permissions requests should be directed to the individual publisher as copyright holder.

BioOne sees sustainable scholarly publishing as an inherently collaborative enterprise connecting authors, nonprofit publishers, academic institutions, research libraries, and research funders in the common goal of maximizing access to critical research.

AMERICAN MUSEUM *Novitates*

PUBLISHED BY THE AMERICAN MUSEUM OF NATURAL HISTORY
CENTRAL PARK WEST AT 79TH STREET, NEW YORK, NY 10024
Number 3477, 20 pp., 40 figures, 3 charts, 1 map
May 11, 2005

A Revision of the North American Spider Genus *Anachemmis* Chamberlin (Araneae, Tengellidae)

NORMAN I. PLATNICK¹ AND DARRELL UBICK²

ABSTRACT

Anachemmis Chamberlin is revised, and contains five species from California, Arizona, and Sonora that are hypothesized to represent the sister group of the Appalachian genus *Liocranoides* Keyserling. The male of the southern Californian type species, *A. sober* Chamberlin, is described for the first time, as are both sexes of four new species: *A. linsdalei* from northern and central California, *A. jungi* from caves in Inyo County, California, *A. aalbui* from in and near caves in San Bernardino County, California, and *A. beattyi* from Arizona and Sonora.

INTRODUCTION

This paper is the third in a series on the North American spiders currently assigned to the family Tengellidae, and deals with the species belonging to the genus *Anachemmis* Chamberlin. In his original description, Chamberlin (1919) assigned two species from California to the genus, but they are not actually congeneric. *Anachemmis dolichopus* Chamberlin was chosen as the type species of *Socalchemmis* Platnick and Ubick (2001),

a group comprising 16 described species found in California, Arizona, and Baja California Norte.

Anachemmis itself has remained almost totally unstudied. Roewer (1955: 607) assigned *Chemmis unicolor* Banks (1901) to *Anachemmis*, but examination of the holotype indicates that this transfer was baseless and is incorrect. The type species, *Anachemmis sober* Chamberlin, was described from females only and has never been redescribed, al-

¹ Peter J. Solomon Family Curator, Division of Invertebrate Zoology, American Museum of Natural History; Adjunct Professor, Department of Biology, City College, City University of New York; Adjunct Professor, Department of Entomology, Cornell University; Adjunct Senior Research Scientist, Center for Environmental Research and Conservation, Columbia University (platnick@amnh.org).

² Associate, Department of Entomology, California Academy of Sciences, 875 Howard Street, San Francisco CA 94103 (dubick@calacademy.org).

though Silva (2003: fig. 13d) did present a scanning electron micrograph of the male palp, based on some of the material detailed below. Lehtinen (1967: 213) published a synonymy, attributed to the late Wilton Ivie, of *Anachemmis* with *Titiotus* Simon, but that synonymy was rejected by Platnick (1999).

Examination of the available collections has revealed a total of five species belonging to *Anachemmis*, distributed in California, Arizona, and Sonora. The group does not seem to have speciated to anywhere near the extent of either of its western relatives, *Socalchemmis* or *Titiotus*, each of which has a highly diversified Californian fauna. Interestingly, though, its members may actually be more closely related to the Appalachian genus *Liocranoides* Keyserling than to either of the other Californian tengelloid genera. In the analysis by Silva (2003: fig. 6), *Anachemmis* clustered with *Liocranoides* rather than *Titiotus*, based on the presence of a prolateral tegular concavity near the embolic base and a subapical serrula. Although *Socalchemmis* was not included in her analysis, we suspect that it is more closely related to *Titiotus* than to *Anachemmis* or *Liocranoides*, as evidenced by the ventral displacement of the ventral prong of the male retrolateral tibial apophysis.

The familial placement of these genera remains tentative (Platnick, 1999). Silva's (2003) results placed them as the sister group of an assemblage including, among other taxa, the type genera of several family-group names, including three recognized as subfamilies of the Zoropsidae by Raven and Stumkat (2005): the Griswoldiinae, Zorocratinae, and Zoropsinae. Raven and Stumkat's results differ, however, in placing *Tengella* Dahl outside this group (in Silva's cladogram, *Tengella* and *Zorocrates* Simon are sister groups). Unfortunately, none of the other genera currently placed in the Tengellidae were included in the Raven and Stumkat matrix, but it is possible that *Liocranoides* and its western relatives may eventually have to be considered members of the Zoropsidae (which has priority over Tengellidae) or placed in a family separate from each of the family-group name-bearing genera *Zoropsis* Simon, *Tengella*, *Zorocrates*, and

Griswoldia Dippenaar-Schoeman and Jocqué.

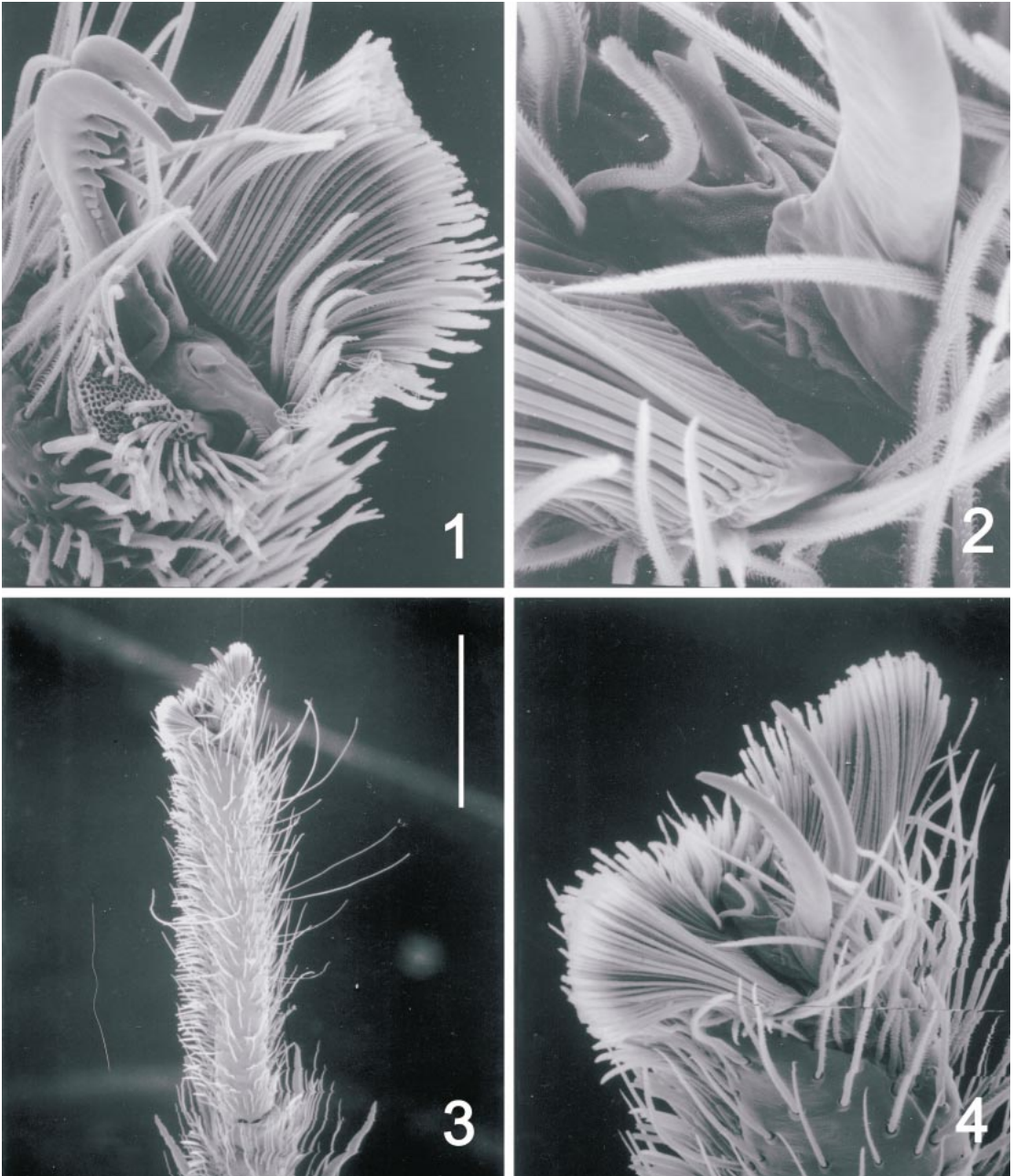
Although species of *Anachemmis* differ from those of *Liocranoides* in having the dorsal prong of the male retrolateral tibial apophysis reduced to just a tiny point, and in lacking a separate anterior hood on the female epigynum, the basic structure of both the male palp and female epigynum differs little in the two groups; one could therefore argue that *Anachemmis* is just a junior synonym of *Liocranoides*. Given that each group of species appears to be monophyletic, that they are separated by an extensive geographic gap, and that each group already has an available generic name, we prefer to retain both of those established names. As with *Liocranoides*, some of the species of *Anachemmis* have been taken in caves, and one (*A. jungi*, new species) is so far known only from subterranean habitats.

Specimens have been examined from the collections of the American Museum of Natural History (AMNH), California Academy of Sciences (CAS), Blaine Hebert (CBH), David Bixler (CDB), California Department of Food and Agriculture (CDFA), Darrell Ubick (CDU), Graham Lowe (CGL), James Cokendolpher (JCC), Los Angeles County Museum (LACM), Museum of Comparative Zoology, Harvard University (MCZ), Mel Thompson (MET), University of California, Berkeley (UCB), University of California, Riverside (UCR), Wendell Icenogle (WRI), and B. J. Kaston material currently in WRI (WRIK). The format of the descriptions follows that of Platnick (1999); all measurements are in millimeters.

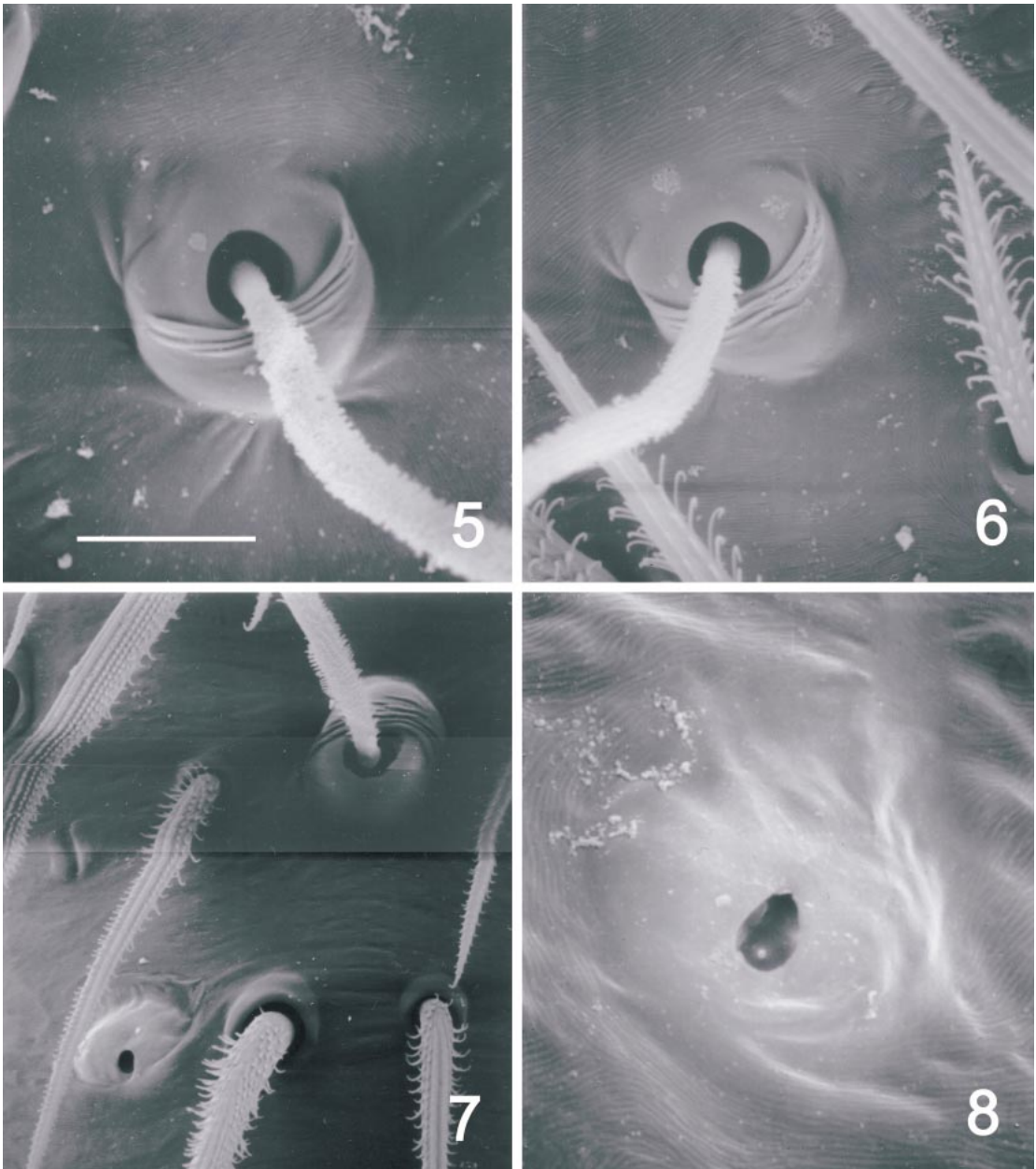
ANACHEMMIS Chamberlin

Anachemmis Chamberlin, 1919: 12 (type species by original designation *A. sober* Chamberlin).

DIAGNOSIS: The unusual character combination of three claws plus claw tufts (fig. 1) readily separates members of *Anachemmis* and its closest relatives from most other North American spiders. Specimens of *Zorocrates*, which are found from Arizona to Texas and south to Central America, have a tiny remnant of the third claw that is equally obscured by the distal hairs of the tarsal scopula, but *Zorocrates* species lack true



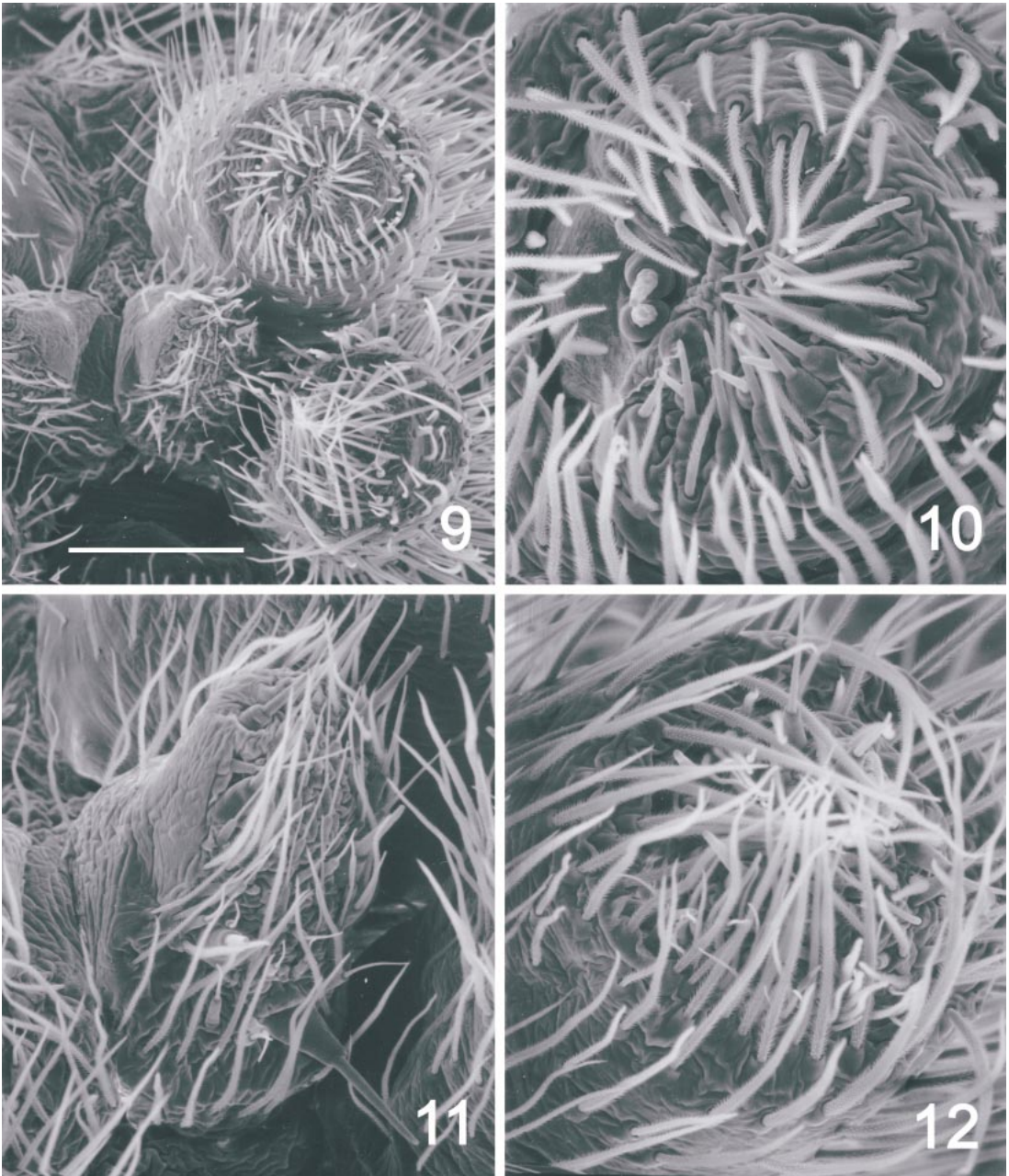
Figs. 1–4. *Anachemmis linsdalei*, new species, male. **1.** Tarsus II, distal view, with claw tuft of one side shaved off. **2, 4.** Tarsus III, distal view, showing small unpaired claw. **3.** Tarsus III, lateral view, showing scopula, claw tufts, and trichobothria. Scale bar = 43 μm (2), 100 μm (1), 150 μm (4), 600 μm (3).



Figs. 5–8. *Anachemmis linsdalei*, new species, male. **5, 6.** Trichobothrial base from palpal tibia, dorsal view. **7.** Tarsus III, dorsal view, showing trichobothrial base and tarsal organ. **8.** Tarsal organ from tarsus III, dorsal view. Scale bar = 7.5 μm (8), 15 μm (5, 6), 25 μm (7).

claw tufts (Griswold et al., in press) and have a single retrolateral tibial apophysis on the male palp. Males of *Anachemmis* differ from those of *Titiotus* in having two rather than three or four prongs on the retrolateral tibial

apophysis, and from those of *Socalchemmis* and *Liocranoides* by having a flattened, blade-shaped ventral prong of the apophysis and by having the dorsal prong of the apophysis reduced to a small point. The female epi-

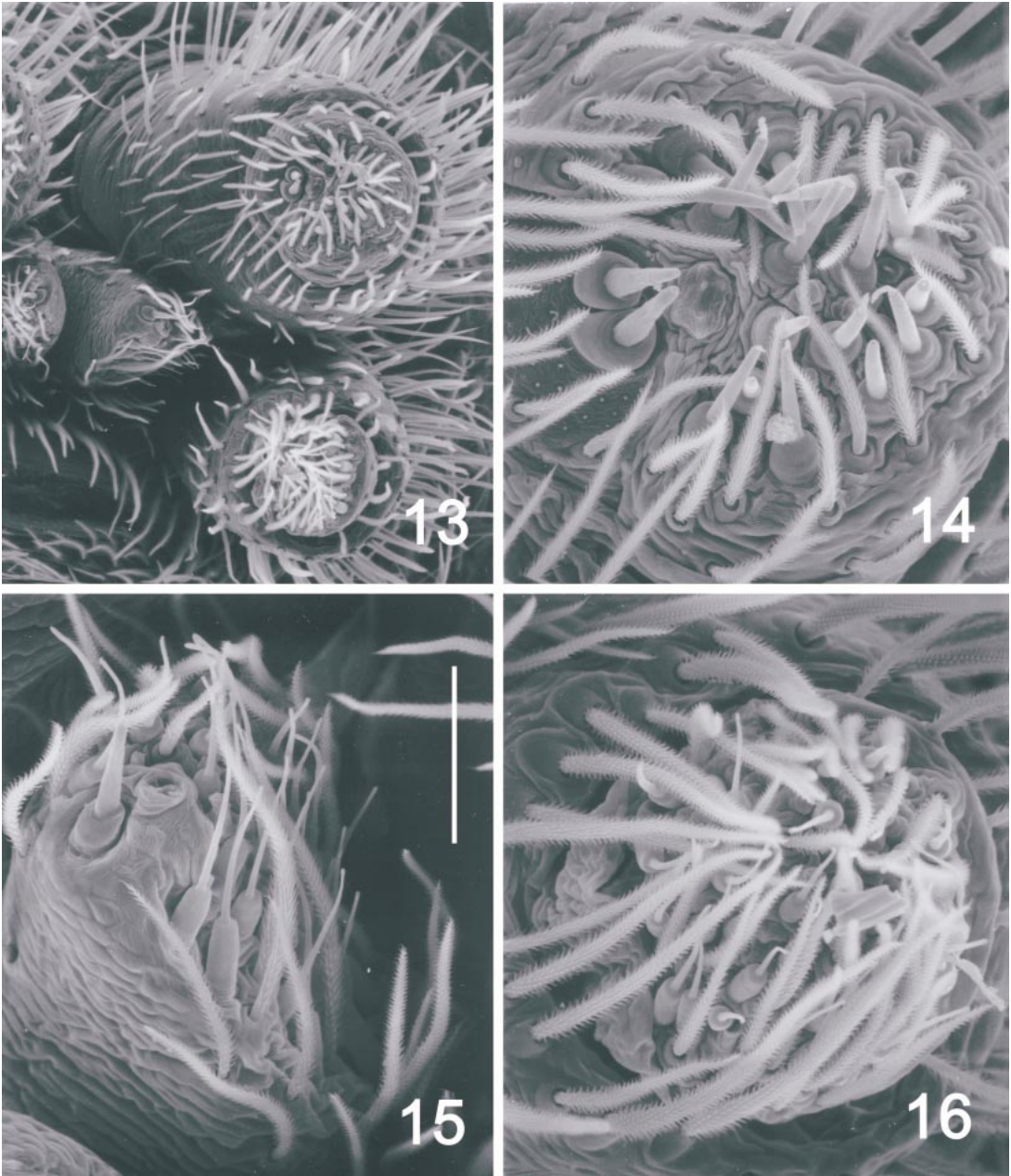


Figs. 9–12. *Anachemmis linsdalei*, new species, female. **9.** Spinnerets of left side, distal view. **10.** Left anterior lateral spinneret, distal view. **11.** Left posterior median spinneret, distal view. **12.** Left posterior lateral spinneret, distal view. Scale bar = 60 μm (10), 77 μm (12), 100 μm (11), 200 μm (9).

gynum differs from those of *Liocranoides* species in lacking an anterior hood, from those of *Titiotus* species in having a much smaller septum, and from those of *Socal-*

chemmis species in having *Liocranoides*-like anterior vulval elaborations.

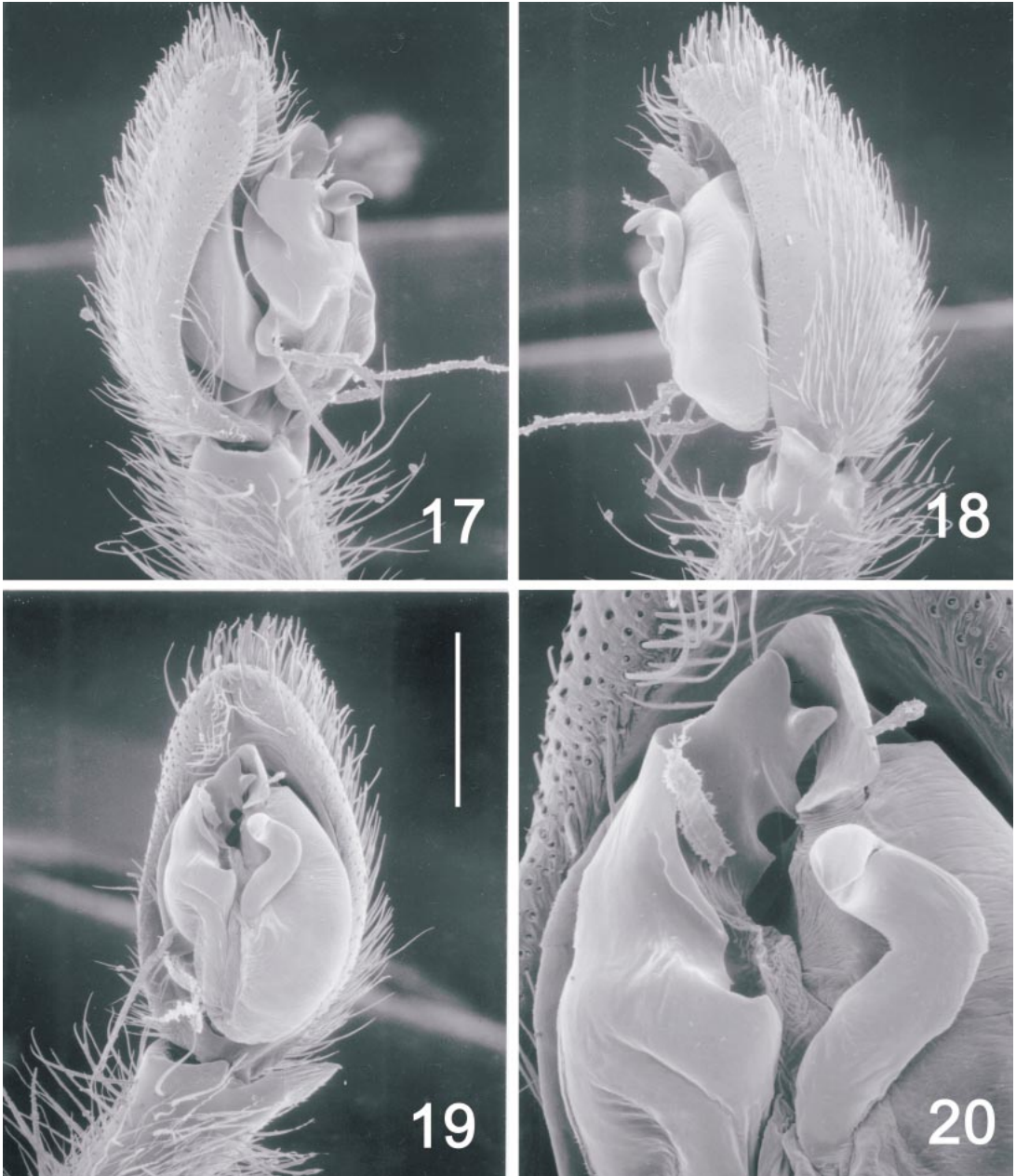
DESCRIPTION: Medium to large spiders, total length of males 7–10, of females 8–13.



Figs. 13–16. *Anachemmis linsdalei*, new species, male. **13.** Spinnerets of left side, distal view. **14.** Left anterior lateral spinneret, distal view. **15.** Left posterior median spinneret, distal view. **16.** Left posterior lateral spinneret, distal view. Scale bar = 43 μm (14–16), 150 μm (13).

Carapace oval, widest at rear of coxae II, abruptly narrowed at level of palpi to less than two-thirds of maximum width; thoracic groove long, longitudinal, very deep; surface coated with short recumbent and fewer, lon-

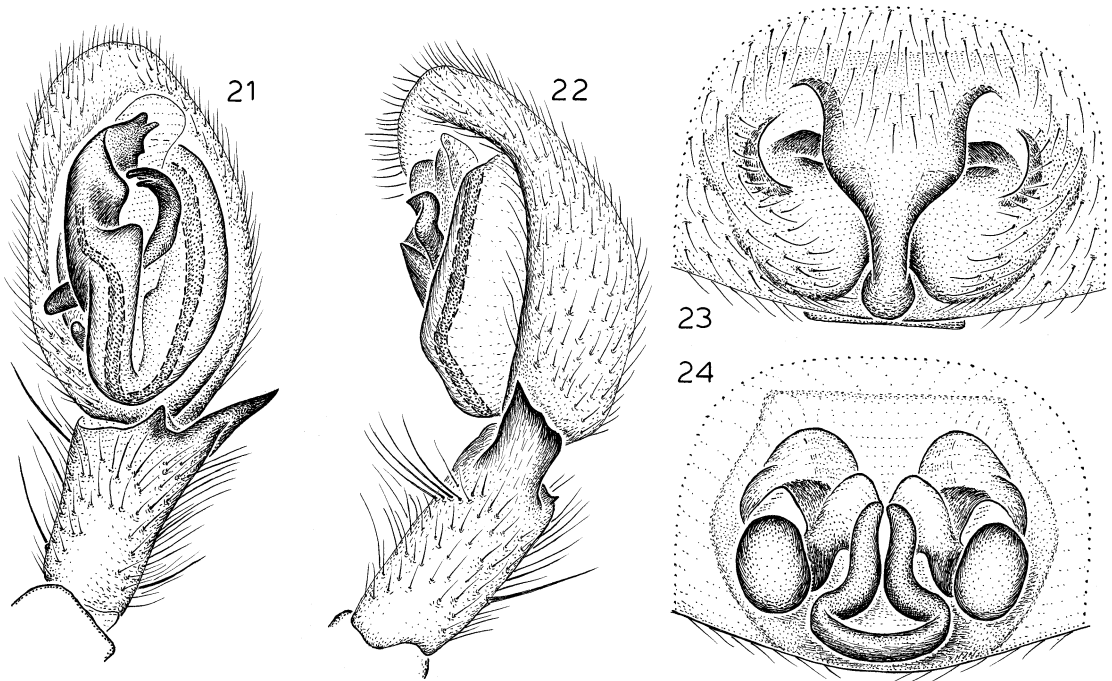
ger, erect dark setae, erect setae most numerous along midline and in ocular area; eight eyes in two rows; from above, both eye rows slightly recurved; from front, anterior row recurved, posterior row slightly pro-



Figs. 17–20. *Anachemmis linsdalei*, new species, male. **17.** Left palp, prolateral view, showing interlocking lobes on tegulum and subtegulum. **18.** Left palp, retrolateral view. **19.** Left palp, ventral view. **20.** Left embolus, conductor, and median apophysis, ventral view. Scale bar = 200 μm (20), 600 μm (17–19).

curved; anterior median eyes round, smallest; other eyes oval, subequal, with canoe-shaped tapeta; anterior median eyes separated by roughly their diameter, slightly closer to an-

terior laterals; posterior medians separated by roughly their diameter, farther from posterior laterals; lateral eyes of each side separated by less than their diameter; median ocular



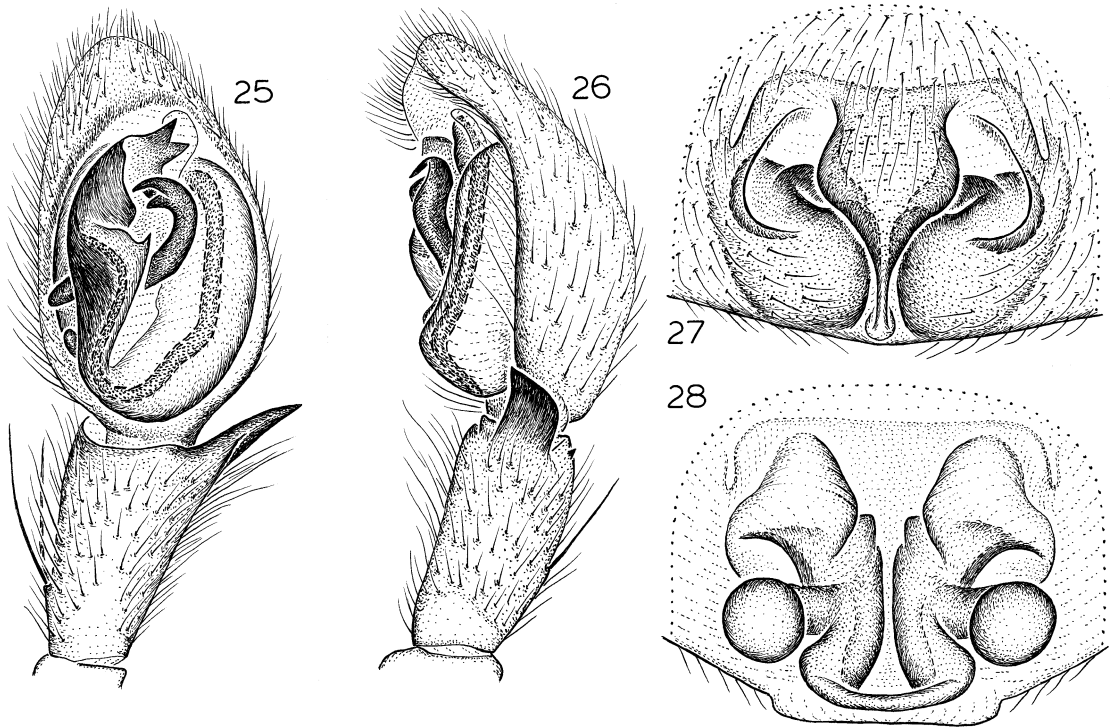
Figs. 21–24. *Anachemmis sober* Chamberlin. **21.** Left male palp, ventral view. **22.** Same, retrolateral view. **23.** Epigynum, ventral view. **24.** Same, dorsal view.

quadrangle wider in back than in front, wider in back than long; clypeal height about twice diameter of anterior median eyes, corners of clypeus with incised margins that overlie cheliceral boss; chilum weakly sclerotized, divided, composed of two triangular sclerites. Chelicerae vertical, anterior surface with few, erect setae; promargin with three teeth situated at proximal end of fang furrow, most proximal tooth smallest, retromargin with three larger, more distally situated teeth; very short, narrow, I-shaped posterior sclerite present, separating chelicerae at base. Labium short, distally invaginated at middle, reflexed at almost 90° angle relative to sternum. Endites rectangular, distally slightly convergent, with anteromedian scopula and anterolateral serrula consisting of single row of teeth. Sternum rounded, without extensions to or between coxae, with erect setae; posterior margin only slightly extended between coxae IV.

Leg formula 4123. Typical leg spination pattern (only surfaces bearing spines listed): femora: I d1-1-1, p0-1-1, r1-2-1; II d1-1-1, p0-2-1, r1-2-1; III d1-1-1, p2-1-1, r1-2-1; IV

d1-1-1, p2-1-1, r0-0-1; patellae III, IV p0-1-0, r0-1-0; tibiae: I, II p0-1-0, v4-4-2; III, IV d1-0-1, p0-1-1, v2-2-2, r0-1-1; metatarsi: I, II v2-2-2; III p1-1-2, v2-2-1r, r1-1-2; IV p1-1-2, v2-2-1r, r1-2-2; tarsi with three claws and claw tufts (figs. 1–4), superior claws with several weak teeth, most distal teeth largest, inferior claws unarmed; all tarsi with strong ventral scopulae, scopular hairs distinct from those of claw tufts (fig. 1); distal segments with trichobothria in two rows, bases ridged (figs. 5, 6); tarsal organ capsulate (fig. 8); all trochanters strongly notched; males without tibial crack; metatarsi without preening combs.

Abdomen without anterior or dorsal scutum; anterior lateral spinnerets large, composed of two articles (figs. 9, 13), distal article with two major ampullate gland spigots and about 10 small piriform gland spigots (figs. 10, 14); posterior median spinnerets composed of one article, small, triangular (figs. 11, 15), those of female expanded posteriorly, where they bear single large and three or four smaller cylindrical gland spigots, preceded anteriorly by smaller aciniform



Figs. 25–28. *Anachemmis linsdalei*, new species. 25. Left male palp, ventral view. 26. Same, retrolateral view. 27. Epigynum, ventral view. 28. Same, dorsal view.

spigots and at least two larger minor ampullate gland spigots; posterior lateral spinnerets composed of two articles, distal article about one-fifth as long as proximal article, that of female apparently without cylindrical gland spigots at base, in both sexes with smaller spigots around base and on tip (figs. 12, 16); colulus represented by setae on small lobe.

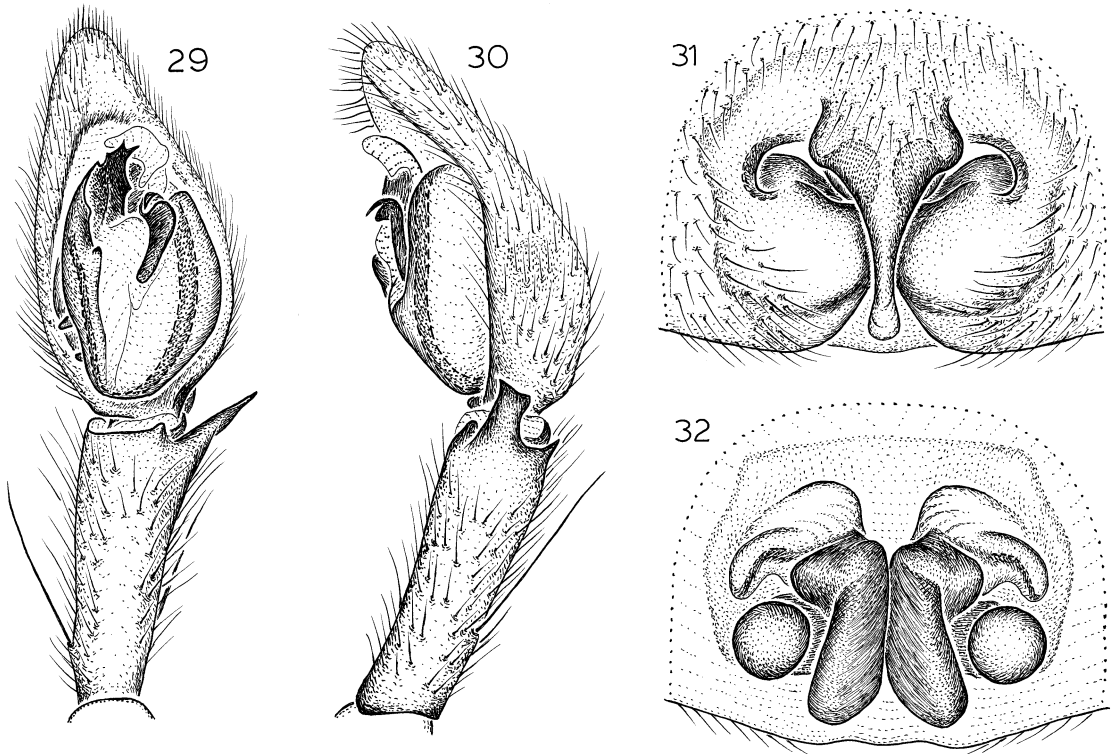
Male palp with patella not widened, retrolateral tibial apophysis bipartite, ventral prong large, blade-shaped (fig. 18), dorsal prong reduced to tiny point; subtegulum and tegulum with interlocking lobes (fig. 17), median apophysis heavily sclerotized at least distally, embolus short, with shallow division between prolateral prong and copulatory prong, accompanied by hyaline conductor (figs. 19, 20). Female palp with extremely long, dentate claw. Epigynum with large median septum wider anteriorly than posteriorly; spermathecal bulbs situated posterolaterally.

MISPLACED SPECIES: *Anachemmis dolichopus* Chamberlin (1919) is now placed in *So-*

calchemmis Platnick and Ubick (2001). For unknown reasons, Roewer (1955) listed *Chemmis unicolor* Banks (1901) as a member of *Anachemmis*, but that transfer is incorrect; the placement of Banks' species will be discussed in detail in a subsequent paper in this series.

KEY TO SPECIES OF *ANACHEMMIS*

1. Males 2
- Females 6
2. Tegulum much wider opposite median apophysis than elsewhere (figs. 21, 25) 3
- Tegulum not much wider opposite median apophysis than elsewhere (figs. 29, 33, 37) 4
3. Tegular edge opposite median apophysis base rounded (fig. 21) *sober*
- Tegular edge opposite median apophysis base pointed (fig. 25) *linsdalei*
4. Ventral prong of retrolateral tibial apophysis relatively wide at base (fig. 34) .. *aalbui*
- Ventral prong of retrolateral tibial apophysis relatively narrow at base (figs. 30, 38) ... 5



Figs. 29–32. *Anachemmis jungi*, new species. 29. Left male palp, ventral view. 30. Same, retrolateral view. 31. Epigynum, ventral view. 32. Same, dorsal view.

- 5. Dorsal prong of retrolateral tibial apophysis relatively large (fig. 30) *jungi*
- Dorsal prong of retrolateral tibial apophysis a tiny spur (fig. 38) *beattyi*
- 6. Widened anterior portion of median epigynal septum relatively short (figs. 31, 35) 7
- Widened anterior portion of median epigynal septum relatively long (figs. 23, 27, 39) 8
- 7. Epigynal surface opposite sides of median septum with distinct ridge (fig. 35) *aalbui*
- Epigynal surface opposite sides of median septum without distinct ridge (fig. 31) *jungi*
- 8. Widened portion of epigynal septum with paramedian invaginations (fig. 39) *beattyi*
- Widened portion of epigynal septum without paramedian invaginations (figs. 23, 27) 9
- 9. Epigynal septum relatively wide both anteriorly and posteriorly (fig. 23) *sober*
- Epigynal septum relatively narrow both an-

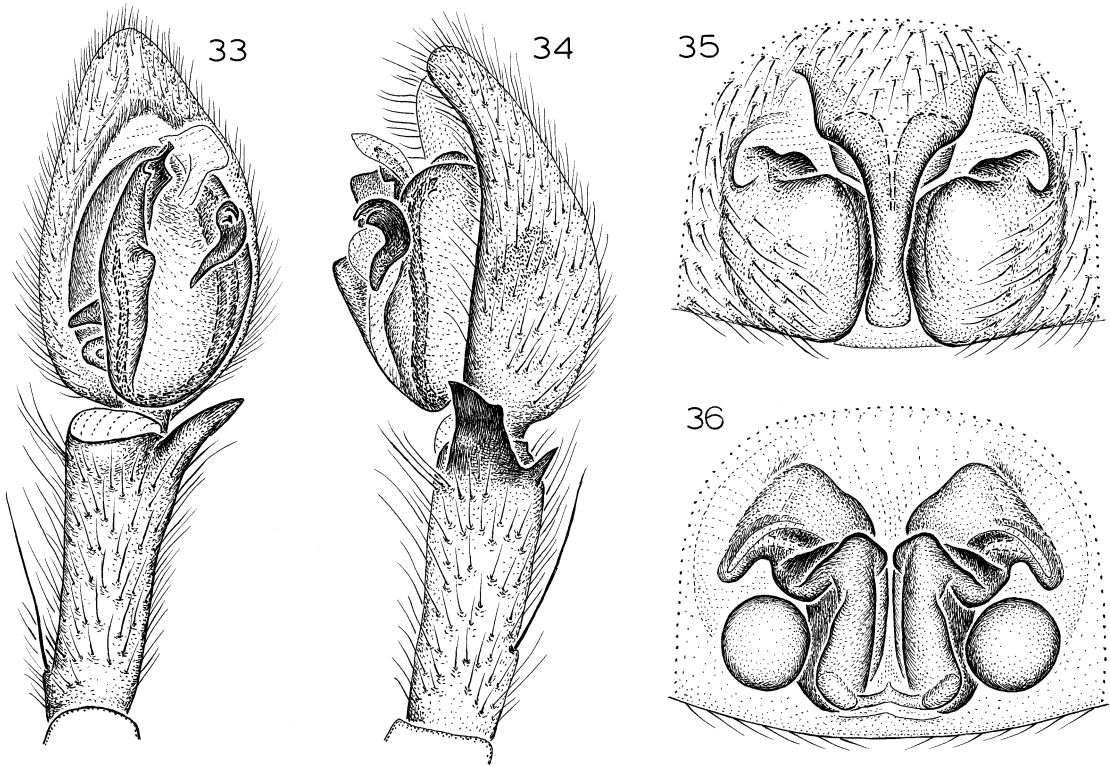
- teriorly and posteriorly (fig. 27) *linsdalei*

Anachemmis sober Chamberlin
 Figures 21–24; Map 1

Anachemmis sober Chamberlin, 1919: 13, pl. 5, fig. 5 (female holotype from Claremont, Los Angeles Co., California, in MCZ, examined).—Silva, 2003: 41, fig. 13d (scanning electron micrograph of male palp).
Anachemmis scaber (lapsus): Roewer, 1955: 607.

DIAGNOSIS: Males closely resemble those of *A. linsdalei* but differ in having a rounded tegular edge opposite the median apophysis (fig. 21); females also closely resemble those of *A. linsdalei* but have a wider epigynal septum and more anteriorly restricted lateral epigynal margins (fig. 23).

MALE: Total length 8.0. Carapace light brown, with darker triangular markings radiating from thoracic groove to intercoxal areas; abdomen mottled brownish gray; femora



Figs. 33–36. *Anachemmis aalbui*, new species. 33. Left male palp, ventral view. 34. Same, retrolateral view. 35. Epigynum, ventral view. 36. Same, dorsal view.

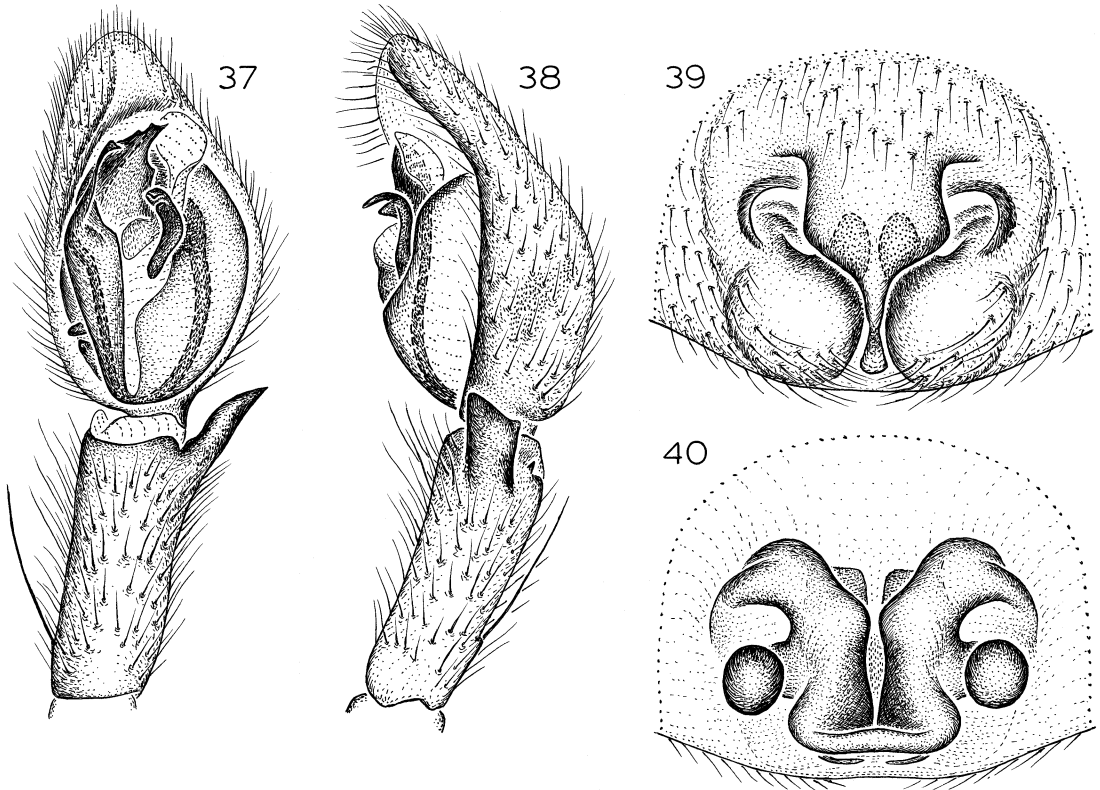
light brown, more distal leg segments grading to dark reddish brown on metatarsi and tarsi. Leg spination: femora: II p1-2-1; IV r0-0-2; tibiae: I d1-0-1, r0-1-0; II d0-0-1, r0-1-0; tibiae: I, II p1-1-0, r1-1-0; III p1-2-2; IV v2-2-2. Tegulum widened opposite median apophysis, with rounded edge (fig. 21); dorsal prong of retrolateral tibial apophysis reduced to tiny, sharp point tip (fig. 22).

FEMALE: Total length 10.3. Coloration as in male. Leg spination: femora: III r1-1-2; IV r0-0-1; tibiae I p0-0-0; III p1-2-2; IV v2-2-2. Epigynum with median septum widened anteriorly and posteriorly, lateral margins restricted to anterior portion of epigynum (fig. 23); spermathecal bulbs oval (fig. 24).

VARIATION: One male taken at Shortcut on the Angeles Crest Highway in the San Gabriel Mountains of Los Angeles County differs from other specimens in having a longer dorsal prong of the retrolateral tibial apophysis. One female from the nearby locality of Switzers Camp differs from most others in

having the lateral epigynal bulges relatively “deflated”. The geographic congruence of these specimens suggested that a separate species might be present in the San Gabriels, but thanks to the help of Wendell Icenogle, a good series of specimens from these and nearby localities has now been available for study. No other males show the abnormally long dorsal prong of the tibial apophysis, and no consistent differences have been detected among the palpal bulbs of any of these specimens. Another female shows the relatively “deflated” lateral epigynal bulges, but only on one side of the epigynum. We conclude that there is evidence for the existence of only a single species at these sites. Another male from Lake Fulmor in Riverside County has a relatively truncated left embolus tip, but is presumably either broken or represents a developmental deformity, as the right embolus of that specimen appears normal.

MATERIAL EXAMINED: CALIFORNIA: **Inyo**



Figs. 37–40. *Anachemmis beattyi*, new species. 37. Left male palp, ventral view. 38. Same, retro-lateral view. 39. Epigynum, ventral view. 40. Same, dorsal view.

Co.: Ninemile Canyon, June 11, 1993, elev. ca. 7000 ft (R. Robertson, CDU), 1 ♀. **Kern Co.:** Bakersfield, June 28, 1985 (S. Stockwell, S. Taber, O. Francke, AMNH), 1 ♂, 1 ♀. **Los Angeles Co.:** Angeles Crest Highway, N La Canada, first canyon in Angeles National Forest c. 0.25 mi from ranger station, June 27, 1982, running on leaf litter, shaded canyon slope (G. Lowe, AMNH), 1 ♂; Beverly Glen Canyon, Santa Monica Mountains, May 9, 1953 (W. McDonald, AMNH), 1 ♀; Big Pines Highway at Grand View Canyon, Angeles National Forest, Jan. 27, 1982, under log, elev. 5900 ft (B. Hebert, CBH), 1 ♀; Big Rock Creek, Valyermo, June 12, 1943, elev. 4200 ft (K. Cowles, AMNH), 1 ♀; Charlton-Chilao P. C., Angeles National Forest, Apr. 28, 1969 (M. Thompson, MET), 1 ♀; Charmlee County Park, May 13, 1975 (M. Thompson, MET), 1 ♂, May 3, 1997, elev. 396 m (J. Kempf, UCR), 1 ♂; Claremont (R. Chamberlin, MCZ), 1 ♀ (paratype), Apr. 1913 (R. Chamberlin, MCZ), 1 ♀ (holotype); Eaton Canyon Park, Aug. 5, 1965 (M. Thompson, MET), 1 ♂, Aug. 16, 1965 (M. Thompson, MET), 1 ♀, Aug. 4, 1967 (M. Thompson, MET), 1 ♀, Jan. 18, 1968

(M. Thompson, MET), 2 ♂, Feb. 19, 1968 (M. Thompson, MET), 1 ♀, May 5, 1968 (M. Thompson, MET), 5 ♂, 1 ♀, May 7, 1968 (M. Thompson, MET), 1 ♂; Glendale, Nov. 25, 1950 (E. Schlinger, AMNH), 1 ♂, May 25, 1958 (E. Schlinger, AMNH), 1 ♂, May 10, 2002, in home (K. Schwel-lenbach, UCR), 1 ♂; Gold Canyon, San Gabriel Mountains, Mar. 1955, matured Apr. 17 (R. Schick, AMNH), 1 ♂, Apr. 17, 1955 (R. Schick, AMNH), 1 ♀, May 6–8, 1955 (R. Schick, AMNH), 1 ♂, 2 ♀; Grandview Canyon, Big Pines Highway, c. 1 mi W Lake Jackson, June 27, 1982, under log, elev. 5900 ft (G. Lowe, CGL), 1 ♀; Henninger Flats, Angeles National Forest, Nov. 11–15, 1968 (D. Marqua, MET), 2 ♀; Hollywood, Oct. 1994 (R. Vetter, UCR), 1 ♀; Lady Bug Canyon, May 29–June 8, 1969–1970 (M. Thompson, MET), 4 ♂; Los Angeles, May 1981 (G. Bakker, CDFA), 1 ♂; Malibu, mid-April 2002 (M. Balducci, UCR), 1 ♂; Malibu Lagoon, near Serra Road, Dec. 11, 1982, under rock (G. Lowe, CGL), 1 ♂; Marker Flats, Mount Baldy Road, Apr. 15, 1987, under rock on slope, elev. 6100 ft (G. Lowe, CGL), 1 ♀; Millard Canyon, Altadena, Dec. 4,

- 1983, under stone on leaf litter (G. Lowe, CGL), 1 ♀, July 5, 1984, on rocks and tree trunks at night (C. Lowe, CGL), 2 ♂, 2 ♀; Millard Canyon, at junction with Canyon Crest Road, San Gabriel Mountains, Altadena, Jan. 18, 2002 (matured Feb. 28, 2002), elev. 1600 ft, under trash on oak duff near stream (W. Icenogle, J. Bond, WRI), 1 ♂; Old Topanga Canyon Road, c. 1 mi from Topanga Canyon Boulevard and Route 27, Nov. 13, 1982, under rock, under cardboard debris on ground in oak forest (G. Lowe, CGL), 2 ♀, Sept. 9, 1989, found dead in spider web (B. Hebert, CBH), 1 ♀; 4723 Palmer Canyon Road, Claremont, July 16, 1998, in kitchen sink (A. Moore, UCR), 1 ♂; Pasadena, May 2, 1966 (C. Goodpasture, UCR), 1 ♂; Placerita Canyon Park, 3 mi E Newhall, July 26, 1972, elev. 1550 ft (F. Hovore, WRI), 1 ♀; May 27, 1976 (P. Sullivan, MET), 1 ♀; Puente Hills, S Roland Heights, 33.96901°N, 117.92688°W, Aug. 25–Sept. 4, 1998, dry pitfall, elev. 294 m (R. Fisher, AMNH), 2 ♀, Nov. 4–8, 2002, same, 1 ♀; San Antonio Canyon, near Claremont, July 1, 1956 (W. Gertsch, V. Roth, AMNH), 6 ♂, 6 ♀; San Antonio Canyon, Mount Baldy Road, 1.5 mi S Lower San Antonio Forest Station, San Gabriel Mountains, May 4, 1996, dead and dried in black widow web in big pipe under road (W. Icenogle, WRI), 1 ♂; San Antonio Canyon, 0.5 mi E Sunset Peak, 0.25 mi W Mount Baldy Road, July 9, 2001, elev. 3800 ft, under rock and log in leaf litter beside stream in shaded canyon bottom (W. Icenogle, WRI), 1 ♂, 1 ♀; San Dimas Canyon, near Claremont, Sept. 2, 1956 (V. Roth, AMNH), 1 ♀; San Dimas Experimental Forest, Big Dalton Canyon Road, 0.75 mi NE Big Dalton Reservoir at junction of Volfe Canyon, 34°10'56"N, 117°47'46"W, July 9, 2001 (matured May 25–31, 2002), elev. 1920 ft, oak leaf litter (M. Oxford, UCR), 1 ♂; Santa Anita Canyon, San Gabriel Mountains, collected as juvenile Nov. 12, 1989, matured in captivity (B. Hebert, CBH), 1 ♂, collected Apr. 23, 1991, matured May 24, 1991 (B. Hebert, CBH), 1 ♂; 15 mi W Santa Monica, Mar. 20, 1941 (W. Ivie, AMNH), 1 ♂; Shortcut, Angeles Crest Highway, San Gabriel Mountains, Apr. 26, 1969 (M. Thompson, MET), 1 ♂; Sierra Madre, June–July 1977 (G. Gorelick, LACM), 3 ♂; Spruce Canyon (W branch, San Antonio Canyon), 0.25 mi W Mount Baldy Road, San Gabriel Mountains, July 5, 2001, elev. 3600 ft, under log beside stream below oaks and alders (W. Icenogle, WRI), 1 ♂, 1 ♀; Sunland, May 19, 1951 (T. Tice, AMNH), 1 ♂; Switzers Camp, Angeles Crest Highway, Angeles National Forest, June 27, 1985, elev. 3600–4000 ft (L. Sorkin, AMNH), 3 ♀; Switzer Picnic Area, upper end of Arroyo Seco Canyon, 0.25 mi S Highway 2, 0.5 mi E junction with Highway N3, San Gabriel Mountains, Apr. 15, 2002 (matured Apr. 27–29, 2002), elev. 3300 ft, under rock in duff below oaks and alders near stream at base of steep, rocky, north-facing canyon side (W. Icenogle, WRI), 2 ♂, 1 ♀; Tanbark Flats, San Gabriel Mountains, June 20, 1952 (M. Cazier, W. Gertsch, R. Schrammel, AMNH, JCC), 95 ♂, 130 ♀, Mar. 30, 1957 (AMNH), 2 ♀; Tapia Park, Santa Monica Mountains, Mar. 20, 1955, matured in Apr. (R. Schick, AMNH), 1 ♀; Temescal Canyon, Pacific Palisades, Santa Monica Mountains, Apr. 10, 1995 (B. Olodort, CBH), 1 ♀; Topanga, off Highway 27, 34.09483°N, 118.60149°W, Mar. 13, 2004, elev. 470 m (R. Keith, D. Palmer, J. Starrett, CDB), 1 ♀; Upper Big Tujunga Canyon, just E Shortcut Ranger Station, San Gabriel Mountains, Aug. 27, 2001, elev. 4200 ft, dead and dried in web of *Steatoda atascadera* (W. Icenogle, WRI), 6 ♂, 1 ♀, June 11, 2002, elev. 4200 ft, on wall of 10' diameter pipe under road above small stream, conifer/oak forest (W. Icenogle, WRI), 2 ♂. **Orange Co.:** N Aliso Wood Canyon, E Laguna Beach, 33.55845°N, 117.74960°W, June 10–Aug. 31, 2001–2002, dry pitfalls, elev. 71 m (R. Fisher, AMNH), 2 ♂, 4 ♀; N Aliso Wood Canyon, E Laguna Beach, 33.56757°N, 117.74825°W, June 1–Aug. 9, 2000–2002, wet and dry pitfalls, elev. 80 m (R. Fisher, AMNH), 7 ♂, 2 ♀; Chino Hills, Telegraph Canyon, 33.91448°N, 117.78555°W, Oct. 29–Nov. 2, 2001, dry pitfall, elev. 238 m (R. Fisher, AMNH), 1 ♀; Chino Hills, ridge S Telegraph Canyon, 33.91196°N, 117.78910°W, Sept. 7–17, 1999, dry pitfall, elev. 358 m (R. Fisher, AMNH), 1 ♀; Crow Canyon, 33.60289°N, 117.54427°W, Nov. 28–Dec. 8, 2000, dry pitfall, elev. 338 m (R. Fisher, AMNH), 1 ♀; Laguna Beach, June 24, 1931 (W. Ivie, AMNH), 1 ♂, July 24, 1931 (W. Ivie, AMNH), 1 ♀, Dec. 28, 1932, under rock (W. Ivie, AMNH), 1 ♀, Aug. 17, 2000 (UCR), 1 ♀; Limestone Canyon Regional Park, 33.73606°N, 117.67048°W, June 18–22, 2001, dry pitfall, elev. 341 m (R. Fisher, AMNH), 1 ♂; Limestone Canyon Regional Park, E The Sinks, 33.71621°N, 117.65892°W, July 20–30, 1999, dry pitfall, elev. 453 m (R. Fisher, AMNH), 1 ♂; Limestone Canyon Regional Park, ENE The Sinks, 33.72200°N, 117.66579°W, June 1–Sept. 3, 1998–2002, pitfall, dry pitfalls, elev. 378 m (R. Fisher, AMNH), 2 ♂, 2 ♀; N Niguel Hill, NW Laguna Niguel, 33.53620°N, 117.73015°W, Aug. 27–31, 2001, Jan. 28–Feb. 1, 2002, dry pitfalls, elev. 195 m (R. Fisher, AMNH), 2 ♀; N Niguel Hill, NW Laguna Niguel, 33.53882°N, 117.72544°W, July 10–Aug. 31, 2000–2002, dry pitfalls, elev. 132 m (R. Fisher, AMNH), 3 ♂, 1 ♀; San Joaquin Hills, E branch Laguna Canyon, 33.59468°N, 117.77529°W, Sept. 9–13, 2002, dry pitfalls, elev. 175 m (R. Fisher, AMNH), 2 ♀; Highway 74, 2.5 mi E San Juan Fire

Station, Hot Spring Canyon turnoff, Santa Ana Mountains, May 11–22, 2002, elev. 1200 ft, under trash on oak duff beside highway, 60 m from stream (W. Icenogle, WRI), 5♂, 5♀; Silverado Canyon, Santa Ana Mountains, Nov. 20, 1955 (R., A. Schick, AMNH), 1♂; Starr Ranch, 33.63025°N, 117.55308°W, Sept. 5–Oct. 14, 1998–2000, elev. 297 m, dry pitfalls (R. Fisher, AMNH), 4♀; N Temple Hill, W Aliso Wood Canyon, 33.56990°N, 117.75633°W, July 10–20, 2000, dry pitfall, elev. 215 m (R. Fisher, AMNH), 1♂; N Temple Hill, W Aliso Wood Canyon, 33.58384°N, 117.75030°W, May 13–17, 2002, dry pitfall, elev. 206 m (R. Fisher, AMNH), 1♀; Weir Canyon, 33.80994°N, 117.75564°W, June 15–25, 1999, dry pitfall, elev. 236 m (R. Fisher, AMNH), 1♂; Weir Canyon, 33.81555°N, 117.74713°W, Sept. 19–29, 2000, dry pitfall, elev. 232 m (R. Fisher, AMNH), 1♀. **Riverside Co.:** Bay Tree Springs, San Jacinto Mountains, Nov. 13, 1976 (M. Long, MET), 1♀; Chino Canyon, Apr. 20, 1960 (J. Powell, UCB), 2♂; 0.25 mi S Dark Canyon Campground, 2 road mi N junction Hwy 243, San Jacinto Mountains, June 4, 2002, under wood pile on ground near stream, conifer/oak forest (W. Icenogle, WRI), 1♀, June 5, 2002, on side of boulder near stream, conifer/oak forest (W. Icenogle, WRI), 1♀, June 4, 2003, elev. 5765 ft, under wood piece beside recently molted skin, on ground near stream, conifer/oak forest (W. Icenogle, WRI), 1♀; De Luz Road, 3 mi S Murrieta, May 10, 1977, under rock in ravine below live oaks, elev. ca. 2000 ft (W. Icenogle, WRI), 1♀; Idyllwild, San Jacinto Mountains, June 17, 1952 (W. Gertsch, AMNH), 6♂, 5♀, July 7, 1953 (W. Gertsch, V. Roth, AMNH), 4♂, 4♀, 1996, elev. prob. 6000 ft (UCR), 1♀; James Reserve, San Jacinto Mountains, 9 mi N Idyllwild on Highway 243, 33°48.4'N, 116°46.4'W, June 29, 2002, elev. 550 ft, coniferous forest, under granite exfoliations (D., S. Ubick, M. Harvey, CDU), 3♀; Lake Fulmor, James Reserve, San Jacinto Mountains, off Highway 243, elev. 5380 ft (J. Kempf, UCR), 1♀, Aug. 1968 (D. Bixler, CDB), 2♂, Sept. 1968 (D. Bixler, CDB), 1♀; Santa Margarita Ecological Reserve, W Temecula, 33.44523°N, 117.16445°W, Sept. 7–17, 1999, dry pitfall, elev. 393 m (R. Fisher, AMNH), 1♀; Santa Margarita Ecological Reserve, W Temecula, 33.45504°N, 117.17123°W, May 11–21, 1998, dry pitfall, elev. 786 m (R. Fisher, AMNH), 1♀; Santa Margarita Ecological Reserve, W Temecula, 33.45689°N, 117.16845°W, Jan. 28–Feb. 7, 2000, dry pitfall, elev. 788 m (R. Fisher, AMNH), 1♀; Strawberry Creek, 0.25 mi N Highway 74, San Jacinto Mountains, Aug. 12, 2001, elev. 3300 ft, under moist, rotting log beside stream (W. Icenogle, WRI), 1♀. **San Bernardino Co.:** Crestline, San Bernardino Moun-

tains, matured Feb. 1997, elev. 5000 ft (J. Klotz, UCR), 1♂; Crestline area, upper end of Waterman Canyon, Highway 18, 0.5 mi NW junction with Highway 138, San Bernardino Mountains, Aug. 30, 2001, elev. 4200 ft, on wall, or dead and dried in spider webs on wall, of long pipe under highway (W. Icenogle, WRI), 2♂, 2♀; East Fork Mountain Home Creek, near Highway 38, San Bernardino Mountains, July 6, 1999, under large rock in conifer forest near stream, elev. 5000 ft (W. Icenogle, WRI), 1♀; Fontana, July 16, 1942 (E. Schlinger, AMNH), 1♂, 1♀; Forest Falls, Aug. 10, 1985, elev. 7000 ft (D. Bixler, CDB), 2♀; Forest Home, Hill Creek, June 11, 1971, in cabin, elev. 6000 ft (D. Lowrie, MCZ), 1♂; Glass Road, San Bernardino Mountains, 1 mi N Highway 38, 34°10'29"N, 116°54'00"W, May 6, 2001 (matured Apr. 1, 2003), elev. 1820 m, in deciduous duff from *Quercus kelloggii* (R. Vetter, UCR), 1♀; off Highway 38, East Fork Mountain, E side Home Creek, San Bernardino Mountains, 34°07'30"N, 116°58'54"W, Feb. 3, 2002 (matured Oct. 26–Nov. 2, 2002), elev. 5120 ft, from dead fern leaves, ferns growing on west-facing rock outcropping on steep canyon wall (T. Prentice, UCR), 1♂; Highway 173 near Lake Arrowhead Village, 34°15'02"N, 117°11'59"W, July 10, 1999, elev. 5200 ft, along roadside and on hills at night (B. Hebert, CBH), 3♂, 2♀; Lake Arrowhead, May 6, 1936 (S. Bishop, AMNH), 1♀; Lytle Creek Canyon, Aug. 20, 1970 (D. Bixler, CDB), 1♀, May 13, 1972, elev. 3000 ft (D. Bixler, CDB), 1♂, May 16, 1972, in house (D. Bixler, CDB), 1♂, June 1, 1973 (D. Bixler, CDB), 1♂; Manker Flats Campground, San Gabriel Mountains, May 14, 1992, elev. 6200 ft (B. Hebert, CBH), 1♂, 1♀; Mill Creek Canyon, Falls Picnic Area, San Bernardino Mountains, May 15, 1969, molted May 28, 1969, under rock in conifer forest, elev. 6000 ft (W. Icenogle, WRI), 1♂, June 18, 1969, elev. 6000 ft, under wood pieces and rocks (W. Icenogle, WRI), 1 penultimate ♀; Mountain Home Creek, Aug. 13, 1959 (W. Gertsch, V. Roth, AMNH), 9♀; 209 Pine Oak, Fawnskin, July 21, 1995, in lower level of house in tire chains (V. Summer, UCR), 1♂; Silverwood Lake State Recreation Area, SE end Silverwood Lake, 34.27776°N, 117.31694°W, Aug. 12–16, 2002, dry pitfall, elev. 1035 m (R. Fisher, AMNH), 1♀; Skinner Creek, just E Highway 38, 1.5 road mi NW junction with road to Forest Falls, San Bernardino Mountains, June 10, 2001, elev. 4200 ft, under rocks and logs beside and above stream in bottom of heavily wooded canyon (W. Icenogle, WRI), 2♂, 1♀; Skinner Ridge, between Skinner Creek and Mountain Home Creek, just SW Highway 38, 34°06'48"N, 116°58'53"W, Dec. 28, 1983–Jan. 26, 1984, elev. 4900 ft, pitfall traps,

canyon live oak forest, northern exposure (M. Narg, UCR), 5♀; Smiley Park, Running Springs, July 12, 1995, in shower (UCR), 1♂; Smiley Park, 2 mi S Running Springs on Highway 330 off Fredalba Road, July 10, 1995 (J. Wambaugh, UCR), 1♀; Twin Peaks, San Bernardino Mountains, (K. Wormald, UCR), 1♂, 1♀, late May–early June 1996, in house (K. Wormald, UCR), 1♂, 1♀, mid-July 1996, male found in house, female outside (K. Wormald, UCR), 1♂, 1♀, Aug.–Sept. 1996, elev. 5500 ft (K. Wormald, UCR), 2♀, mid May–mid June 1997 (R. Vetter, UCR), 11♂, June 11, 1997 (K. Wormald, UCR), 1♀. **San Diego Co.:** De Luz Road, 1 mi N Fallbrook, May 19, 1984, in drain under road (G. Lowe, CGL), 1♂, Aug. 25, 1984 (G. Lowe, CGL), 1♀; Fry Creek, Mount Palomar, Aug. 4, 1984 (D. Boe, UCR), 1♀; near Henshaw, Cleveland National Forest, July 30, 1956 (W. Gertsch, V. Roth, AMNH), 1♂, 2♀; W side Lake Henshaw, just E route S-6, 33.24438°N, 116.76411°W, May 16, 2004, elev. 308 m (D. Palmer, P. Paquin, T. Prentice, C. Vink, AMNH), 1♂; SW end Mendenhall Valley, Palomar Mountain, June 3–July 2, 1997, pitfall, forest (J. George, UCR), 3♂, July 2–Aug. 7, 1997, pitfall, elev. 6000 ft (J. George, UCR), 2♂; Mount Palomar, July 26, 1931 (R. Chamberlin, AMNH), 1♀, June 30, 1956, elev. 3000–5000 ft (W. Gertsch, V. Roth, AMNH), 4♂, 7♀; Palomar Mountain, July 4, 1967 (B. Kaston, WRIK), 1♂; Palomar Mountain, N Fry Creek, W side route S-6, 33.3458°N, 116.8794°W, May 16, 2004, elev. 1500 m (D. Palmer, P. Paquin, T. Prentice, C. Vink, AMNH), 3♂, 1♀; Palomar Mountain State Park, July 13, 1953 (W., J. Gertsch, AMNH), 1♂, 3♀; Palomar Mountain State Park, Doone Trail, 33°20'29"N, 116°54'5"W, Feb. 20, 2003, in duff on creek bed by road, elev. 4639 ft (R. Vetter, UCR), 1♂ (matured mid-March 2003). **Santa Barbara Co.:** Cold Spring Trail, Santa Barbara, Aug. 14, 1959 (W. Gertsch, V. Roth, AMNH), 31♀; 5 mi E Gaviota, July 17, 1953 (W., J. Gertsch, AMNH), 13♂, 17♀ (one with apparently teratological epigynum); Refugio Rd., 23 mi W Santa Barbara, Apr. 6–May, 1978–1979 (D. Boe, UCR), 4♀; Santa Barbara, Nov.–Dec. 1950 (H. Shantz, AMNH), 2♂, July 17, 1953 (H. Shantz, AMNH), 1♂, July 27, 1970 (M. Cravens, Cdfa), 1♂; 10 mi W Santa Barbara, July 12, 1934 (W. Ivie, AMNH), 1♂, 2♀; Sedgwick Ranch Reserve, 34°43'N, 120°01'W, May–June 11, 1997, malaise traps, elev. 1000–1800 ft (E., M. Schlinger, CAS), 1♂, 1♀, June 24–July 21, 1997, malaise traps, elev. 800–1500 ft (E., M. Schlinger, CAS), 3♂, Aug. 27–Nov. 1997, same, 3♀, May 28, 1997, malaise trap, elev. 1500–2500 ft (E. M. Schlinger, CAS), 1♂; Upper Oso Campground, near Santa Ynez River, Apr. 26–27, 1975, molted

before May 18, 1975, under rock (F. Hovore, WRI), 1♂. **Tulare Co.:** Ash Mountain, Kaweah Power Station #3, 40 mi NE Visalia, July 3, 1982 (D. Burdick, CAS), 1♂, Mar. 12, 1983 (D. Burdick, CAS), 1♀, June 19–21, 1983 (D. Haines, CAS), 2♂, July 6–10, 1983, in flume (D. Burdick, CDU), 7♂, 3♀, July 17, 1983 (D. Burdick, CAS), 2♀, July 31, 1983 (R. Haines, CDU), 1♂, 3♀, June 8, 1985 (R. Haines, Cdfa), 2♂, 1♀, June 7, 1986 (R. Haines, Cdfa), 1♂, June 9, 1986 (R. Haines, Cdfa), 2♀, June 28, 1986 (R. Haines, Cdfa), 1♂, July 12, 1986 (R. Haines, Cdfa), 1♀, Aug. 5–Sept. 3, 1995 (D. Burdick, CAS), 3♀, July 24, 1996 (D. Burdick, CAS), 1♂; near Ash Mountain entrance, Sequoia National Park, July 5, 1956, elev. 3700 ft (W. Gertsch, V. Roth, AMNH), 2♂, 1♀, July 9, 1958 (W. Gertsch, V. Roth, AMNH), 9♂, 8♀; NE Case Mountain Peak, 36.41790°N, 118.79329°W, July 14–18, 2003, dry pitfall, elev. 1691 m (R. Fisher, AMNH), 1♂; NE Case Mountain Peak, 36.42183°N, 118.79370°W, July 14–18, 2003, dry pitfall, elev. 1646 m (R. Fisher, AMNH), 1♂; NE Case Mountain Peak, N Case Mountain Grove, 36.41317°N, 118.79190°W, July 14–22, 2002–2003, dry pitfall, elev. 1810 m (R. Fisher, AMNH), 3♂; NNE Case Mountain Peak, E of E end of Salt Creek, 36.42035°N, 118.79391°W, July 19–22, 2002, dry pitfall, elev. 1644 m (R. Fisher, AMNH), 1♂, 36.42108°N, 118.79976°W, July 19–22, 2002, dry pitfall, elev. 1819 m (R. Fisher, AMNH), 2♂; NW Case Mountain Peak, S Salt Creek, 36.41442°N, 118.81381°W, July 14–22, 2002–2003, dry pitfall, elev. 1855 m (R. Fisher, AMNH), 3♂; NW Case Mountain Peak, S Salt Creek, 36.41781°N, 118.81930°W, July 14–18, 2003, dry pitfall, elev. 1709 m (R. Fisher, AMNH), 3♂; SE Case Mountain Peak, Case Mountain Grove, 36.40372°N, 118.78190°W, July 14–18, 2003, dry pitfall, elev. 1678 m (R. Fisher, AMNH), 1♂; SE Case Mountain Peak, Case Mountain Grove, 36.40511°N, 118.18982°W, July 19–22, 2002, dry pitfall, elev. 1805 m (R. Fisher, AMNH), 1♀; SE Case Mountain Peak, Salt Creek Ridge, 36.39740°N, 118.77597°W, July 19–22, 2002, dry pitfall, elev. 1801 m (R. Fisher, AMNH), 1♂, 36.39887°N, 118.78778°W, July 19–22, 2002, dry pitfall, elev. 1848 m (R. Fisher, AMNH), 1♂; Kaweah River, 5 mi E Three Rivers, July 17, 1952, elev. 1258 ft (W. Gertsch, AMNH), 1♀; 5–10 mi on Mineral King Road from Three Rivers, July 4, 1956, elev. 2000–4000 ft (W. Gertsch, V. Roth, AMNH), 5♂, 5♀; Moorehouse Creek, near Camp Nelson, July 11, 1958 (W. Gertsch, V. Roth, AMNH), 1♂, 5♀; 1 mi W Camp Nelson, July 11, 1958 (W. Gertsch, V. Roth, AMNH), 2♂; Roads End, Kern River, July 3, 1956 (W. Gertsch, V. Roth, AMNH), 3♂, 2♀; Sequoia National Park, Kaweah Cave,

36°29'26.1"N, 118°49'17.4"W, Apr. 28, 2004, in cave entrance, elev. 490 m (D. Ubick, CDU), 1 ♀ (matured May 15, 2004); Soda Creek, W Camp Nelson, July 11, 1958 (W. Gertsch, V. Roth, AMNH), 3 ♀, Sept. 14, 1959 (W. Gertsch, V. Roth, AMNH), 1 ♀. **Ventura Co.:** Ojai, Mar. 1978 (D. Boe, UCR), 2 ♀; Reyes Creek, 25 mi SW Lake of the Woods, May 6, 1980, elev. 4000 ft (C. Griswold, UCB), 1 ♀; Stecker Park, Highway 150 N Santa Paula, 34°25'N, 119°5'W, July 4, 1986, elev. 650 ft, from black widow web in restroom (B. Hebert, CBH), 1 ♂, 1 ♀; Wheeler Springs, July 2, 1958 (W. Gertsch, V. Roth, AMNH, CAS), 17 ♂, 13 ♀; Yerba Buena Road, 2–3 mi N Route 1, June 26, 1983, under rock by stream in canyon (G. Lowe, CGL), 1 ♂.

DISTRIBUTION: Southern California (map 1).

NATURAL HISTORY: Collection records indicate that *Anachemmis sober* occurs in forests, primarily oak but also coniferous, at elevations from 70 to 2000 m. Specimens have

been found beneath rocks, logs, and other ground litter, in and on leaf litter, on tree trunks, in a cave entrance, and in human structures, such as houses, culverts, and a flume. Several collections are from pitfall and malaise traps and of dead individuals in spider webs, including those of *Latrodectus* and *Steatoda*. The 700 specimens examined indicate that both sexes occur year round, with females being more commonly collected, and a peak abundance from May to August (chart 1). That this species may be very common is documented by a single June day's collection, at Tanbark Flats, Los Angeles County, of 95 males and 130 females.

Anachemmis linsdalei, new species

Figures 1–20, 25–28; Map 1

TYPES: Male holotype and female allotype taken in house at Hastings Natural History State Reserve, Monterey Co., California (Jan. 24–25, 1946; J. Linsdale), deposited in AMNH.

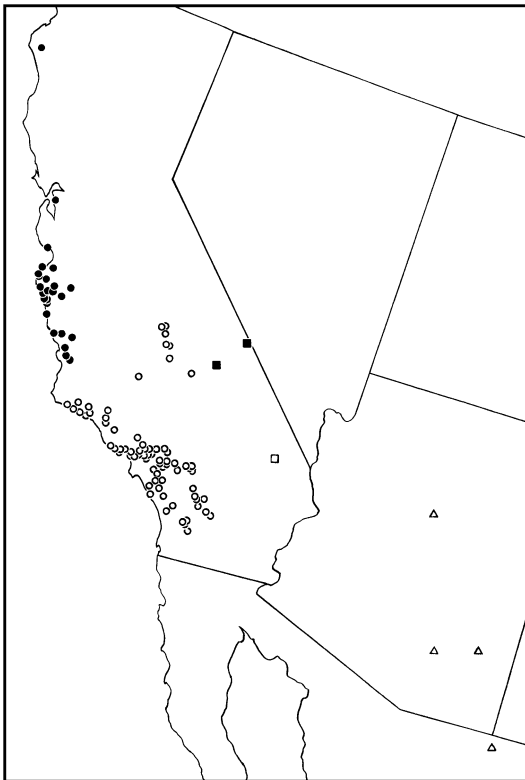
ETYMOLOGY: The specific name is a patronym in honor of the collector of the types and many other specimens.

DIAGNOSIS: Males closely resemble those of *A. sober* but differ in having a sharply pointed tegular edge opposite the median apophysis (fig. 25); females also closely resemble those of *A. sober* but have a narrower epigynal septum and less anteriorly restricted lateral epigynal margins (fig. 27).

MALE: Total length 7.4. Coloration as in *A. sober*. Leg spination: femora: II p1-2-1; IV r0-0-2; tibiae: I d0-0-1, r0-1-0; II d1-0-1, r0-1-0; III, IV d1-1-1; metatarsi: I, II p1-1-0, r1-1-0; III p1-2-2, r1-2-2; IV p1-2-2, r1-1-2. Tegulum widened opposite median apophysis, with pointed edge (fig. 25); dorsal prong of retrolateral tibial apophysis reduced to tiny, sharp point tip (fig. 26).

FEMALE: Total length 9.7. Coloration as in *A. sober*. Leg spination: femora I r1-1-1; tibiae: II r0-1-0; III, IV d1-1-1; metatarsi III, IV p1-2-2. Epigynum with median septum widened at about half its length, lateral margins longer than widened portion of septum (fig. 27); spermathecal bulbs rounded (fig. 28).

OTHER MATERIAL EXAMINED: CALIFORNIA: **Alameda Co.:** Berkeley, (AMNH), 4 ♂, 2 ♀.



Map 1. Western North America, showing records of *Anachemmis sober* (open circles), *A. linsdalei* (filled circles), *A. jungi* (filled squares), *A. aalbui* (open square), and *A. beattyi* (triangles).

Humboldt Co.: Humboldt Redwoods State Park, Albee Creek Campground, Sept. 10, 1992, elev. 360 ft (D. Ubick, J. Boutin, CDU), 1 ♀. **Monterey Co.:** Arroyo Seco, Indians Road, Los Padres National Forest, 36°14'N, 121°29.5'W, May 7, 1995, dead yucca, elev. 1100 ft (D. Ubick, W. Savary, CDU), 1 ♀, July 8, 1995, at night (D. Ubick, S. Fend, W. Savary, CDU), 1 ♂, 1 ♀, Aug. 24, 1996, oak-chaparral, at night along road (D. Ubick, CDU), 4 ♀, July 3, 1999, on road at night (S. Fend, J. Ledford, D. Ubick, CDU), 2 ♂, Apr. 15, 2000, oak woodland, under rocks, in litter (D., S. Ubick, CDU), 2 ♀, Apr. 27–Aug. 19, 2001, pitfall traps, elev. 1100 ft (D., S. Ubick, CDU), 94 ♂, 12 ♀, Aug. 19–Nov. 11, 2001, same, 2 ♀, Feb. 22–May 19, 2002, same, 7 ♂, 2 ♂; May 19–Oct. 13, 2002, same, 100 ♂, 24 ♀, Oct. 13, 2002–Jan. 25, 2003, same, 1 ♀, Jan. 25–June 11, 2003, same, 8 ♂, 3 ♀, June 11–Nov. 28, 2003, same, 63 ♂, 18 ♀, Nov. 28, 2003–June 18, 2004, same, 44 ♂, 4 ♀, June 18–Oct. 24, 2004, same, 24 ♂, 14 ♀; Arroyo Seco Campground, Los Padres National Forest, Apr. 26, 1980, under rock (D. Ubick, CDU), 1 ♀, May 13, 1994, at outhouse, elev. 950 ft (D. Ubick, J. Boutin, CDU), 1 ♂, May 13–15, 1994, oak forest, ground litter, elev. 900 ft (J. Boutin, CDU), 3 ♂, 3 ♀, Apr. 24, 1999, oak riparian (D. Ubick, W. Savary, CDU), 1 ♀; Arroyo Seco Campground, S The Lakes, Los Padres National Forest, 36°14'N, 121°29'W, May 13–15, 1994, under granite, leaf litter, elev. 900 ft (D. Ubick, J. Boutin, CDU), 3 ♂, 6 ♀, May 6, 1995, under granite (D. Ubick, W. Savary, CDU), 1 ♀, Apr. 27–May 18, 2001–2002, at granite talus, under rocks (D., S. Ubick, DUC), 3 ♂, Apr. 27–Aug. 19, 2001, same, pitfall traps, 3 ♂, 1 ♂, Aug. 19, 2001–May 18, 2002, same, pitfall traps, 3 ♀, June 11–Nov. 28, 2003, same, 6 ♂, 5 ♀, Nov. 28, 2003–June 18, 2004, same, 9 ♂, June 18–Oct. 24, 2004. Same, 2 ♂; Big Sur, July 1937 (W. Ivie, AMNH), 1 ♀, June 25, 1952 (M. Cazier, W. Gertsch, R. Schrammel, AMNH), 1 ♂, 4 ♀, July 18, 1953 (W., J. Gertsch, AMNH), 1 ♂, 6 ♀, Apr. 2, 1960 (W. Gertsch, W. Ivie, R. Schrammel, AMNH), 4 ♂, 6 ♀; 14 mi S Big Sur, Dec. 22, 1953 (V. Roth, AMNH), 1 ♂; Carmel, Nov. 12, 1953 (AMNH), 1 ♀, Apr. 5–May 23, 1954 (AMNH), 4 ♂, 5 ♀; 1 mi N Carmel, Dec. 21, 1953 (V. Roth, AMNH), 1 ♀; Carmel Valley, Apr. 9, 1979 (D. Boe, UCR), 1 ♂, 1 ♀, May 1996 (P. Stadille, CDU), 2 ♂; Coast Ridge Trail, 0.8 mi SE Nacimiento Road, Jun. 1, 1991, oak-pine forest, under bark litter, elev. 3000 ft (D. Ubick, CDU), 2 ♂, 2 ♀; Hastings Natural History State Reserve, 36°22.8'N, 121°33.2'W, May 19–29, 1939 (J. Linsdale, CAS), 2 ♂, May 30, 1940 (J. Linsdale, CAS), 1 ♀, Feb. 22, 1941 (J. Linsdale, CAS), 1 ♀,

May 27, 1942 (J. Linsdale, CAS), 1 ♀, July 18, 1944 (J. Linsdale, CAS), 1 ♂, Jan. 24–25, 1946, house (J. Linsdale, AMNH), 2 ♀, Apr. 10, 1946, among sticks (J. Linsdale, CAS), 1 ♀, May 17, 1946, soil under house, passage in soil (J. Linsdale, AMNH), 1 ♂, 1 ♀, Nov. 18, 1946, *Neotoma* nest (J. Linsdale, AMNH), 2 ♂, Dec. 8, 1946, house wall (J. Linsdale, AMNH), 2 ♀, Dec. 9,

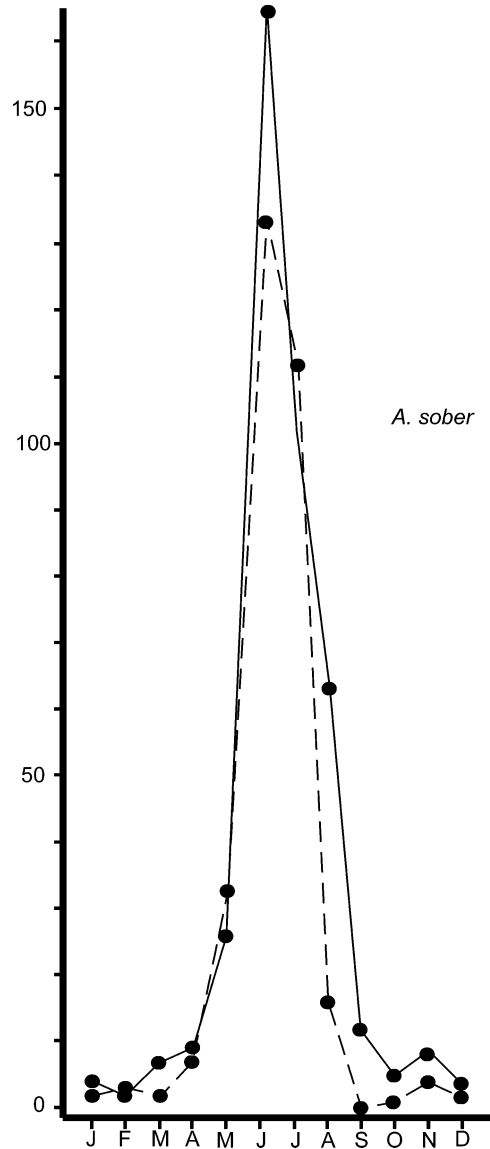


Chart 1. Seasonal abundance of *Anachemmis sober* based upon the total specimens examined (728) from all localities. Y-axis = number of specimens; X-axis = time in months; solid lines = females; dashed lines = males.

1946, *Neotoma* nest (J. Linsdale, CAS), 1 ♀, June 1947 (J. Linsdale, AMNH), 1 ♂, May 24, 1948, museum (J. Linsdale, AMNH), 1 ♂, May 17, 1950, under log (J. Linsdale, CAS), 1 ♀, June 24, 1950, headquarters, at night (J. Linsdale, AMNH), 1 ♀, July 23, 1999, on trail at night (S. Fend, J. Ledford, D. Ubick, CDU), 9 ♂, 5 ♀, Aug. 2–4, 1999, in riparian woodland along creek (D. Ubick, S. Fend, J. Ledford, CAS), 1 ♀; Hastings Natural History State Reserve, Big Creek, 36.38899°N, 121.54861°W, Jan. 9, 2004, elev. 578 m (D. Palmer, N. Stewart, AMNH), 1 ♀; Highway G16 at G17, Apr. 10, 1979 (D. Boe, UCR), 1 ♀; Landels-Hill Big Creek Reservoir, 5 mi N Lucia, June 4–6, 1982 (C. Griswold, UCB), 1 ♀; Monterey, Sept. 6, 2002, in house (C. Edwards, UCR), 1 ♀; Nacimiento Road at Kirk Creek, May 31, 1991, redwood forest, in duff, under rocks, elev. 1000 ft (D. Ubick, CDU), 1 ♂, 1 ♀; Nacimiento Road at N Fork Mill Creek, June 1, 1991, redwood forest, under bark and maple-tan oak litter, elev. 1500–1600 ft (D. Ubick, CDU), 1 ♂; Pacific Grove, Aug. 15, 1931 (W. Ivie, AMNH), 1 ♀; Pfeifer Big Sur State Park, 27 mi S Carmel, May 3, 1964, elev. ca. 300 ft (P. Craig, CAS), 2 ♀, Aug. 19, 1987, riparian (D. Gross, CAS), 1 ♀; Redwood Canyon, 4 mi S Gorda, Apr. 2, 1960 (W. Gertsch, W. Ivie, R. Schrammel, AMNH), 2 ♀; 4 mi W Salinas, Sept. 25, 1961 (W. Gertsch, W. Ivie, AMNH), 1 ♀; Tassajara Spring Buddhist retreat, Sept. 13, 1978 (R. Doty, AMNH), 1 ♀; UCNRS Big Creek Reserve, nr. Whale Point Cabin, 36°4.34'N, 121°35.81'W, elev. ca 200 m, May 24–27, 2002 (S. Lew, UCB), 2 ♀, Oct. 24, 2002 (S. Lew, UCB), 1 ♂ (molted in captivity), May 12, 2003 (S. Lew, UCB), 1 ♀. **San Benito Co.:** Pinnacles National Monument, July 3, 1958 (W. Gertsch, V. Roth, AMNH), 1 ♂, 2 ♀; Pinnacles National Monument, Balconies Caves area, June 8,

1991, oak-riparian, under granite (D. Ubick, CDU), 1 ♀; Pinnacles National Monument, Bear Gulch Trail at Chalone Creek, May 8, 1992, oak-buckeye grove, under rocks in talus slope (T. Briggs, D. Ubick, W. Rauscher, CDU), 1 ♀. **San Luis Obispo Co.:** Cambria, Nov. 16, 1937 (O. Bryant, AMNH), 1 ♂, 3 ♀, June 23, 1952 (M. Cazier, W. Gertsch, R. Schrammel, AMNH), 13 ♂, 17 ♀, Feb. 7, 1967, in pine duff (V. Roth, AMNH), 1 ♂; Old Morro Road, 1 mi E Hwy 41, Apr. 3, 1985, oak-grassland, under serpentine (W. Rauscher, CDU), 1 ♀, Apr. 3, 1985, matured in May (D. Ubick, CDU), 1 ♂, 1 ♀; 6 mi N Paso Robles, Sept. 26, 1961 (W. Gertsch, V. Roth, AMNH), 1 ♀; 26 mi W Paso Robles, May 12, 1961 (R. Schuster, F. Raney, AMNH), 1 ♀; Reservoir Canyon, San Luis Obispo, Aug. 15, 1959 (W. Gertsch, V. Roth, AMNH), 2 ♀; San Luis Obispo, Aug. 8, 1931 (R. Chamberlin, AMNH), 1 ♀. **Santa Cruz Co.:** Santa Cruz, Apr. 7, 1979 (D. Boe, UCR), 2 ♂, 1 ♀.

DISTRIBUTION: Northern and central California (map 1).

NATURAL HISTORY: Collection records of *Anachemmis linsdalei* are from elevations of 100 to 500 m and predominantly from various types of oak woodlands, but also from pine and redwood forests. This species occurs on ground habitats and has been collected under rocks, logs, in and on litter, in *Neotoma* nests, in houses, and on roads at night. Hand collected specimens (about 200) show a similar abundance to *A. sober*, being collected year round with females being slightly more common and a peak of activity from April to June (chart 2). The 450 specimens obtained from ethylene glycol pitfall traps (10 traps) at Arroyo Seco, Monterey County, indicate a much higher proportion of males (chart 3). During periods of peak activity, this species was, by far, the most abundant spider in the pitfall traps.

Anachemmis jungi, new species

Figures 29–32; Map 1

TYPES: Male holotype and female allotype from Titus Canyon Cave, Death Valley National Monument, Inyo Co., California (Jan. 22, 1972; A. Jung), deposited in AMNH.

ETYMOLOGY: The specific name is a patronym in honor of the collector of the types.

DIAGNOSIS: Males of this long-legged, cavernicole species resemble those of *A. aalbei* in having a narrow, erect embolus (fig. 29),

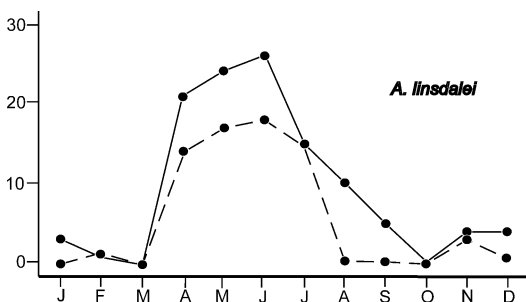


Chart 2. Seasonal abundance of *Anachemmis linsdalei* based upon the total of hand-collected specimens examined (182) from all localities. Y-axis = number of specimens; X-axis = time in months; solid lines = females; dashed lines = males.

but have a much narrower ventral prong of the retrolateral tibial apophysis (fig. 30); females also resemble those of *A. aalbui* in having very short anterolateral epigynal margins, but have the epigynal septum widened at the level of the anterolateral epigynal margins (fig. 31).

MALE: Total length 8.9. Color paler than in *A. sober*, with carapace brownish orange, legs with femora light yellow, grading to brownish orange on more distal segments, abdomen pale white. Leg spination: femora: I p0-2-1; II p2-2-1; IV r0-1-2; tibiae: I, II d1-0-1, v6-4-2, r1-0-0; IV r1-0-1; metatarsi: I, II p1-1-0, r1-1-0; III p1-2-2; IV v2-2-2. Tegulum not widened opposite median apophysis, embolus relatively narrow, erect (fig. 29); dorsal prong of retrolateral tibial apophysis relatively large for genus, ventral prong relatively narrow (fig. 30).

FEMALE: Total length 13.6. Coloration as in male. Leg spination: femora: I p0-3-1; II p2-2-1; III r2-1-1; IV p2-1-2, r0-1-2; tibiae: I, II v4-6-2, r0-1-0; metatarsi: III p1-2-2; IV r1-1-2. Anterolateral epigynal margins and atrium relatively short, septum widened at that level (fig. 31), median epigynal ducts massive (fig. 32).

OTHER MATERIAL EXAMINED: CALIFORNIA: Inyo Co.: Defense Cave, Stone Canyon, Argus Range, Sept. 7, 1988, elev. 4000 ft (R. Aalbu, CAS), 1♀; Titus Canyon Cave, Death Valley National Monument, Jan. 22, 1972 (A. Jung, AMNH), 1♂.

DISTRIBUTION: Known only from caves in Inyo Co., California (map 1).

Anachemmis aalbui, new species

Figures 33–36; Map 1

TYPE: Male holotype taken in pitfall trap at an elevation of 4300 ft at the Park Headquarters, Mitchell Caverns State Park, San Bernardino Co., California (Mar. 17–June 16, 1979; R. Aalbu), deposited in CAS.

ETYMOLOGY: The specific name is a patronym in honor of the collector of the types.

DIAGNOSIS: Males of this long-legged species resemble those of *A. jungi* in having a narrow, erect embolus (fig. 33), but have a wider ventral prong of the retrolateral tibial apophysis (fig. 34); females also resemble those of *A. jungi* in having very short an-

terolateral epigynal margins, but have the epigynal septum widest anteriorly, rather than at the level of the anterolateral epigynal margins (fig. 35).

MALE: Total length 9.2. Coloration as in *A. jungi*. Leg spination (both legs I missing): femora: II p2-2-1; IV r0-0-2; tibiae II d1-0-1, v4-6-2, r0-1-0; metatarsi: II p2-0-0, r1-0-0; III p1-2-2, r1-2-2; IV r1-1-2. Tegulum not widened opposite median apophysis, embolus relatively narrow, erect (fig. 33); dorsal prong of retrolateral tibial apophysis relatively large for genus, ventral prong relatively wide, especially at base (fig. 34).

FEMALE: Total length 12.3. Coloration as in *A. jungi*. Leg spination: femora: I p0-3-1; II p2-2-1; III r2-1-1; IV r0-0-2; tibiae I, II v4-6-2, r0-1-0; metatarsi: I, II p2-0-0, r2-0-0; III p1-2-2; IV p1-2-2, r1-1-2. Anterolateral epigynal margins and atrium relatively short, septum widened anteriorly (fig. 35), median epigynal ducts massive (fig. 36).

OTHER MATERIAL EXAMINED: CALIFORNIA: San Bernardino Co.: Medicine Cave, Providence

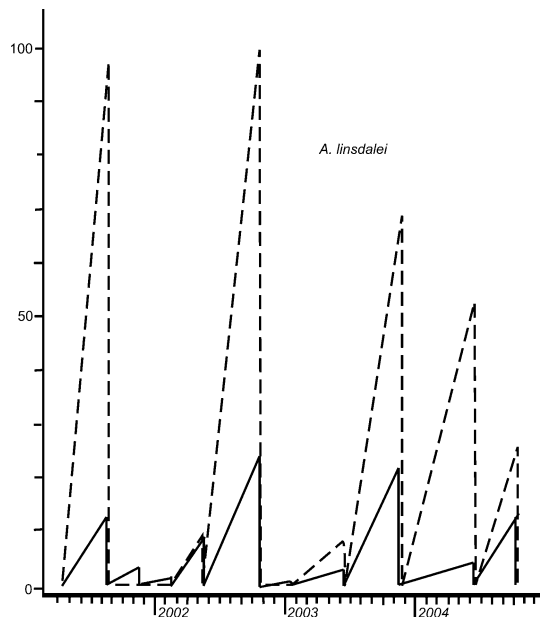


Chart 3. Seasonal abundance of *Anachemmis linsdalei* based upon the specimens collected (450) from 10 pitfall traps maintained at Arroyo Seco, Monterey County, California. Y-axis = number of specimens; X-axis = time; solid lines = females; dashed lines = males.

Mountains State Recreation Area, June 20–Sept. 27, 1988, pitfall (R. Aalbu, CAS), 6♀.

DISTRIBUTION: Known only from San Bernardino Co., California (map 1).

Anachemmis beattyi, new species

Figures 37–40; Map 1

TYPE: Male holotype from Peppersauce Cave Canyon (north side of Santa Catalina Mountains), Pinal Co., Arizona (Apr. 21, 1961; J. Beatty), deposited in AMNH.

ETYMOLOGY: The specific name is a patronym in honor of the collector of the types.

DIAGNOSIS: Males of this distinctive species can be recognized by the distally long and narrowed embolus (fig. 37), females by the anteriorly very wide epigynal septum bearing deep, paramedian invaginations (fig. 39).

MALE: Total length 8.4. Coloration as in *A. jungi*. Leg spination: femora: I p0-3-1, r2-1-2; II p2-1-1; IV r0-1-2; tibiae: I d1-0-1, v4-6-2, r1-1-0; II d1-0-1, v4-6-2, r1-0-0; metatarsi: I r1-0-0; II p0-1-0, r1-1-0. Tegulum not widened opposite median apophysis, embolus narrowed distally (fig. 37); dorsal prong of retrolateral tibial apophysis reduced to tiny point, ventral prong relatively narrow (fig. 38).

FEMALE: Total length 8.8. Coloration as in *A. jungi*. Leg spination: femora: I p0-2-1, r1-1-1; IV p2-0-1, r0-0-2; patellae: III p0-0-0, r0-0-0; IV p0-0-0; tibiae I, II v4-6-2, r0-1-0; metatarsi III p1-2-2. Anterolateral epigynal margins and atrium relatively short, septum much widened at that level, bearing deep paramedian invaginations (fig. 39), median epigynal ducts massive (fig. 40).

OTHER MATERIAL EXAMINED: ARIZONA: **Cocconino Co.:** Manzanita Camp, Oak Creek Canyon, July 25, 1952 (M. Cazier, AMNH), 2♀. **Graham Co.:** Lower Canyon, Mount Graham, July 14, 1956 (W. Gertsch, V. Roth, AMNH), 1♀. MEXICO: SONORA: Cajon Bonito, 31°18'N, 108°55'W, Sept. 11, 1973 (V. Roth, CAS), 3♀.

DISTRIBUTION: Known only from Arizona and Sonora (map 1).

ACKNOWLEDGMENTS

We thank all the private collectors listed above, and the following curators of institu-

tional collections, for their help in making specimens available for this revision: Charles Griswold (CAS), Marjorie Moody (CDFA), Brian Brown (LACM), Gonzalo Giribet and Laura Leibensperger (MCZ), Cheryl Barr and Steve Lew (UCB), and Rick Vetter and Tom Prentice (UCR). Mohammad Shadab of the American Museum of Natural History helped greatly with the illustrations. Special thanks go to Wendell Icenogle for his dedicated efforts targeted at resolving the species status of specimens from the San Gabriel Mountains, to Daniel Palmer for donating large samples of southern Californian tenebrionids, and to Wendell Icenogle, Tom Prentice, and Daniel Palmer for helping to sort out relevant specimens from other collections.

REFERENCES

- Banks, N. 1901. Some spiders and other Arachnida from southern Arizona. *Proceedings of the United States National Museum* 23: 581–590.
- Chamberlin, R.V. 1919. New Californian spiders. *Journal of Entomology and Zoology, Claremont* 12: 1–17.
- Griswold, C.E., M.J. Ramírez, J.A. Coddington, and N.I. Platnick. In press. Atlas of phylogenetic data for entelegyne spiders (Araneae, Araneomorphae, Entelegynae). *Occasional Papers of the California Academy of Sciences*.
- Lehtinen, P.T. 1967. Classification of the cribellate spiders and some allied families, with notes on the evolution of the suborder Araneomorpha. *Annales Zoologici Fennici* 4: 199–468.
- Platnick, N.I. 1999. A revision of the Appalachian spider genus *Liocranoides* (Araneae: Tengellidae). *American Museum Novitates* 3285: 1–13.
- Platnick, N.I., and D. Ubick. 2001. A revision of the North American spiders of the New Genus *Socalchemmis* (Araneae, Tengellidae). *American Museum Novitates* 3339: 1–25.
- Raven, R.J., and K.S. Stumkat. 2005. Revisions of Australian ground-hunting spiders: II. Zoropsidae (Lycosoidea: Araneomorphae). *Memoirs of the Queensland Museum* 50: 347–423.
- Roewer, C.F. 1955. *Katalog der Araneen von 1758 bis 1940, bzw. 1954*. Institut Royal des Sciences Naturelles de Belgique, Brussels, 2: 1–1751.
- Silva D., D. 2003. Higher-level relationships of the spider family Ctenidae (Araneae: Ctenoidea). *Bulletin of the American Museum of Natural History* 274: 1–86.