

## **The Complete Plastid Genome Sequence of *Angiopteris evecta* (G. Forst.) Hoffm. (Marattiaceae)**

Authors: Roper, Jessie M., Kellon Hansen, S., Wolf, Paul G., Karol, Kenneth G., Mandoli, Dina F., et al.

Source: American Fern Journal, 97(2) : 95-106

Published By: The American Fern Society

URL: [https://doi.org/10.1640/0002-8444\(2007\)97\[95:TCPGSO\]2.0.CO;2](https://doi.org/10.1640/0002-8444(2007)97[95:TCPGSO]2.0.CO;2)

---

BioOne Complete ([complete.BioOne.org](https://complete.BioOne.org)) is a full-text database of 200 subscribed and open-access titles in the biological, ecological, and environmental sciences published by nonprofit societies, associations, museums, institutions, and presses.

Your use of this PDF, the BioOne Complete website, and all posted and associated content indicates your acceptance of BioOne's Terms of Use, available at [www.bioone.org/terms-of-use](https://www.bioone.org/terms-of-use).

Usage of BioOne Complete content is strictly limited to personal, educational, and non - commercial use. Commercial inquiries or rights and permissions requests should be directed to the individual publisher as copyright holder.

---

BioOne sees sustainable scholarly publishing as an inherently collaborative enterprise connecting authors, nonprofit publishers, academic institutions, research libraries, and research funders in the common goal of maximizing access to critical research.

## The Complete Plastid Genome Sequence of *Angiopteris evecta* (G. Forst.) Hoffm. (Marattiaceae)

JESSIE M. ROPER, S. KELLON HANSEN, and PAUL G. WOLF<sup>1</sup>

Department of Biology, Utah State University, Logan, UT 84322

KENNETH G. KAROL

Department of Biology, University of Washington, Seattle, WA 98195-5325

DINA F. MANDOLI

Department of Biology, University of Washington, Seattle, WA 98195-5325

Center for Developmental Biology, University of Washington, Seattle, WA 98195-5325

Institute for Stem Cell and Regenerative Medicine, University of Washington, Seattle, WA

KARIN D. E. EVERETT

Department of Biology, University of Washington, Seattle, WA 98195-5325

JENNIFER KUEHL and JEFFREY L. BOORE

DOE Joint Genome Institute and Lawrence Berkeley National Laboratory, Walnut Creek, CA 94598

**ABSTRACT.**—We have sequenced the complete plastid genome of the fern *Angiopteris evecta*. This taxon belongs to a major lineage (marattioid ferns) that, in most recent phylogenetic analyses, emerges near the base of the monilophytes. We used fluorescence activated cell sorting (FACS) to isolate organelles, rolling circle amplification (RCA) to amplify the plastid genome, followed by shotgun sequencing to 8X depth coverage, and then we assembled these reads to obtain the plastid genome sequence. The circular genome map has 153,901 bp, containing inverted repeats of 21,053 bp each, a large single-copy region of 89,709 bp, and a small single-copy region of 22,086 bp. Gene order is similar to that of *Psilotum*. Several unique characters are observed in the *Angiopteris* plastid genome, such as repeat structure in a pseudogene. We make structural comparisons to *Psilotum* and *Adiantum* plastid genomes. However, the overall structural similarity to *Psilotum* indicates either wholesale conservation of genome organization, or (less likely) repeated convergence to a stable structure. The results are discussed in relation to a growing comparative database of genomic and morphological characters across the green plants.

Vascular plants first appear in the fossil record during the Silurian (Kenrick and Crane, 1997; Pryer *et al.*, 2004a; Stewart and Rothwell, 1993). Although many major lineages are extinct, recent phylogenetic studies (Pryer *et al.*, 2001) indicate that an early split resulted in two extant lineages: seed plants and monilophytes. The latter includes the leptosporangiate ferns, marattioid ferns, horsetails, and a clade that includes eusporangiate ferns and whisk ferns. How these four lineages are related to each other is still poorly understood (Pryer *et al.*, 2001; Pryer *et al.*, 2004b; Wilkström and Pryer, 2005). Resolving these phylogenetic nodes is important for understanding the evolution of morphological, genetic, and developmental systems in monilophytes. As part of an

---

<sup>1</sup> Corresponding Author: Paul G. Wolf. Ph.: (435) 797 4034, Fax: (435) 797 1575, Email: wolf@biology.usu.edu.

effort to provide data for addressing this issue, we sequenced the complete plastid genome of *Angiopteris evecta* (Marattiaceae). Currently, complete plastid genome sequences are available from only one leptosporangiate fern, *Adiantum capillus-veneris* L. (Wolf *et al.*, 2003), and from only one other monilophyte, *Psilotum nudum* (L.) P. Beauv., whereas about 50 seed plant plastid genomes are currently in GenBank. Complete genome sequences can provide information on many levels, including genome structure, gene content, intron content, and nucleotide sequences of targeted regions. We chose *Angiopteris evecta* for our study because it is an easily available representative of an ancient lineage for which no plastid genome has been sequenced. Extant marattioid ferns include about 240 species (see Pryer *et al.*, 2004b) typically treated in four genera and one family (Smith *et al.*, 2006). Marattioid ferns first appeared in the middle carboniferous, and fossils assignable to the extant genus *Marattia* date to the late Triassic (Hill and Camus, 1986). Thus marattioid ferns represent a clade as significant as seed plants or leptosporangiate ferns in terms of age, though not in terms of extant diversity.

Although the plastid genome is generally conserved in overall structure among land plants (Palmer, 1985), there is often sufficient variation for comparative analysis both at the structural and sequence levels. Large rearrangements, spanning several genes, are likely to be rare events that can be used as phylogenetic markers (Raubeson and Jansen, 1992). Early studies of fern chloroplast genomes uncovered a wealth of phylogenetic data and insights into the evolution of the genome (Hasebe and Iwatsuki, 1992; Raubeson and Stein, 1995; Stein *et al.*, 1992; Stein *et al.*, 1989). One significant finding from these studies was that a large portion of the plastid genome has been rearranged in ferns, but the exact series of events has not yet been fully characterized. Subsequently, there was a shift to more focused studies on DNA sequences of a few genes from large numbers of taxa (Hasebe *et al.*, 1994; Hasebe *et al.*, 1995; Pryer *et al.*, 2004b). Thus, our understanding of structural evolution of fern plastid genomes remains limited. This study represents part of a broader investigation into plastid genome evolution by sequencing complete genomes or large portions thereof. Because *Angiopteris* represents a major lineage, details of its plastid genome can provide baseline data for this and other studies. Our objective here is to present the plastid genome sequence of *Angiopteris evecta* and compare it structurally to other monilophytes.

#### MATERIALS AND METHODS

*Preparation and DNA sequencing.*—Pinnules from an immature crozier of *A. evecta* were collected from a plant growing at the University of Washington, Seattle, WA, USA (original source unknown). Voucher specimens (UC 1794629, 1794630, and 1794631) are deposited at the University of California Herbarium at Berkeley (UC). We collected purified fractions of intact chloroplasts from *A. evecta* by fluorescent activated cell sorting (FACS). One hundred milligrams of fresh frond tissue was sliced into 0.25–1 mm segments

in a sterile plastic Petri dish (on ice) in 1.0 mL of an organelle isolation solution containing 0.33 M sorbitol, 50 mM HEPES at pH 7.6, 2 mM EDTA, 1 mM MgCl<sub>2</sub>, 0.1% BSA, 1% PVP-40, 1.5 M NaCl and 5 mM β-Mercaptoethanol, adjusted to pH 7.6 with KOH. Suspended organelles (chloroplasts, mitochondria, and nuclei) were withdrawn using a wide-bore pipette then filtered through 30 μm nylon mesh. Organelles were then stained with DAPI (Sigma-Aldrich, St. Louis, MO, USA) and Mitotracker Green (Molecular Probes Inc., Eugene, OR, USA) at final concentrations of 2 μg/mL and 100 nM, respectively. The organelle suspension was incubated on ice for 15 min then analyzed on a FACS DiVa using sterile phosphate buffered solution (Invitrogen Inc., Carlsbad, CA, USA) as sheath fluid. We used a Coherent INNOVA Enterprise Ion laser (Coherent, Inc., Santa Paula, CA, USA) emitting a 488 nm beam at 275 mW to excite chlorophyll and Mitotracker Green, and a UV beam at 30 mW to excite DAPI. Red fluorescence from chlorophyll was passed through a 675±20 nm filter, held within the FL3 photomultiplier tube (PMT). Green fluorescence from Mitotracker Green was passed through a 530±30 nm filter held within the FL1 PMT. DAPI fluorescence from DNA was passed through a 424±44 nm filter held within the FL4 PMT. Organelles were collected into separate sterile 15 ml centrifuge tubes by flow cytometric sorting based on the respective sorting gates. Sorted organelles were pelleted at 3000 g for 15 min, flash frozen in liquid nitrogen, and shipped frozen for DNA isolation and amplification.

The DNA preparation was processed for sequencing by the Production Genomics Facility of the DOE Joint Genome Institute (JGI). Template was first amplified via rolling circle amplification (RCA) with random hexamers (Dean *et al.*, 2001). The RCA product was mechanically sheared into random fragments of about 3 kb by repeated passage through a Hydroshear device (Genemachines, San Carlos, CA, USA). These fragments were then enzymatically repaired to ensure blunt ends, then purified by gel electrophoresis to select for a narrow distribution of fragment sizes. Fragments were ligated into dephosphorylated pUC18 vector and transformed into *E. coli* to create plasmid libraries, using standard techniques (Sambrook *et al.*, 1989). Automated colony pickers were used to select colonies into 384-well plates containing LB medium. After overnight incubation, a small aliquot was processed robotically by RCA of plasmids (Dean *et al.*, 2001), then used as a template for DNA sequencing using Big-Dye chemistry (Applied Biosystems, Foster City, CA, USA). Sequencing reactions were cleaned using SPRI (Elkin *et al.*, 2001) and separated electrophoretically on ABI 3730XL or Megabace 4000 automated DNA sequencing machines to produce a sequencing read from each end of each plasmid.

*Assembly and annotation.*—Sequences were processed using Phred (Ewing and Green, 1998; Ewing *et al.*, 1998), trimmed for quality, screened for vector sequences, and assembled using Phrap. Quality scores were assigned automatically, and the electropherograms and assembly were viewed and verified for accuracy using Consed 12 (Gordon *et al.*, 1998). As is typical, manual input was required to reconstruct part of one of the inverted repeat

regions, since automated assembly methods cannot recognize these as different. Regions of low quality or coverage and several gaps were reamplified by PCR and then sequenced. We designed primers from the ends of the longest contigs and used Proofstart long-PCR (QIAGEN, Valencia, CA, USA) to amplify the missing regions. Reagent concentrations and amplification conditions followed the manufacturers instructions and we used PCR extension times of 1 min./kb of estimated PCR product. PCR products were digested with *Tsp409I* (compatible overhang with *EcoRI*) and *Sau3aI* (compatible overhang with *BamHI*). The fragments were separated in agarose, visualized, and cut from the gels. These fragments were then cloned into puC19, end-sequenced, and added to the previous assembly. If assembly of a gap was incomplete at this stage, then primers were designed from the subclone fragment sequences above and used to sequence the appropriate region using the earlier long-PCR product as a template. In this way we closed all 12 gaps. The final assembly has an average depth of coverage of 8X. We assembled the sequence as a circular genome with two copies of the inverted repeat. We annotated the genome using DOGMA (Dual Organellar GenoMe Annotator) (Wyman *et al.*, 2004). Genes were located by using a database of previously published chloroplast genomes, from which Blast searches (Altschul *et al.*, 1997) are used to find approximate gene positions. From this initial annotation, we located hypothetical starts, stops, and intron positions based on comparisons to homologous genes in other chloroplast genomes. We also took into account the possibility of RNA editing, which can modify the start and stop positions (Kugita *et al.*, 2003). We examined the plastid genome sequence for repeat structure using the program REPuter (Kurtz *et al.*, 2001). We set the minimum repeat size to 20 and analyzed the sequence with only one copy of the inverted repeat.

## RESULTS AND DISCUSSION

The plastid genome of *Angiopteris evecta* has 153,901 bp, with inverted repeats (IR<sub>A</sub> and IR<sub>B</sub>) of 21,053 bp each, a large single-copy (LSC) region of 89,709 bp, and a small single-copy (SSC) region of 22,086 bp (Fig. 1). The sequence and annotation is deposited in GenBank as accession number DQ821119. During annotation of the genome, we located the repertoire of genes that is typical of land plant plastid genomes. The overall organization of the *Angiopteris* plastid genome is typical of other vascular plants and most similar to that of *Psilotum nudum* among plastid genomes sequenced to date. Some of the differences between *Angiopteris* and *Psilotum* are possibly a function of autapomorphies in either lineage, but this cannot be determined until more plastid genomes are examined. For example, *Psilotum* lacks three genes (*chlL*, *chlN*, and *chlB*), for subunits of protochlorophyllide, an enzyme involved in the light-independent formation of chlorophyll. These three genes are found in most other plastid genomes, including *Angiopteris*. The ends of the IR also vary considerably among vascular plants. *Psilotum* differs from *Angiopteris* in that the SSC-IR boundary in the former is near *trnL-UAG* and

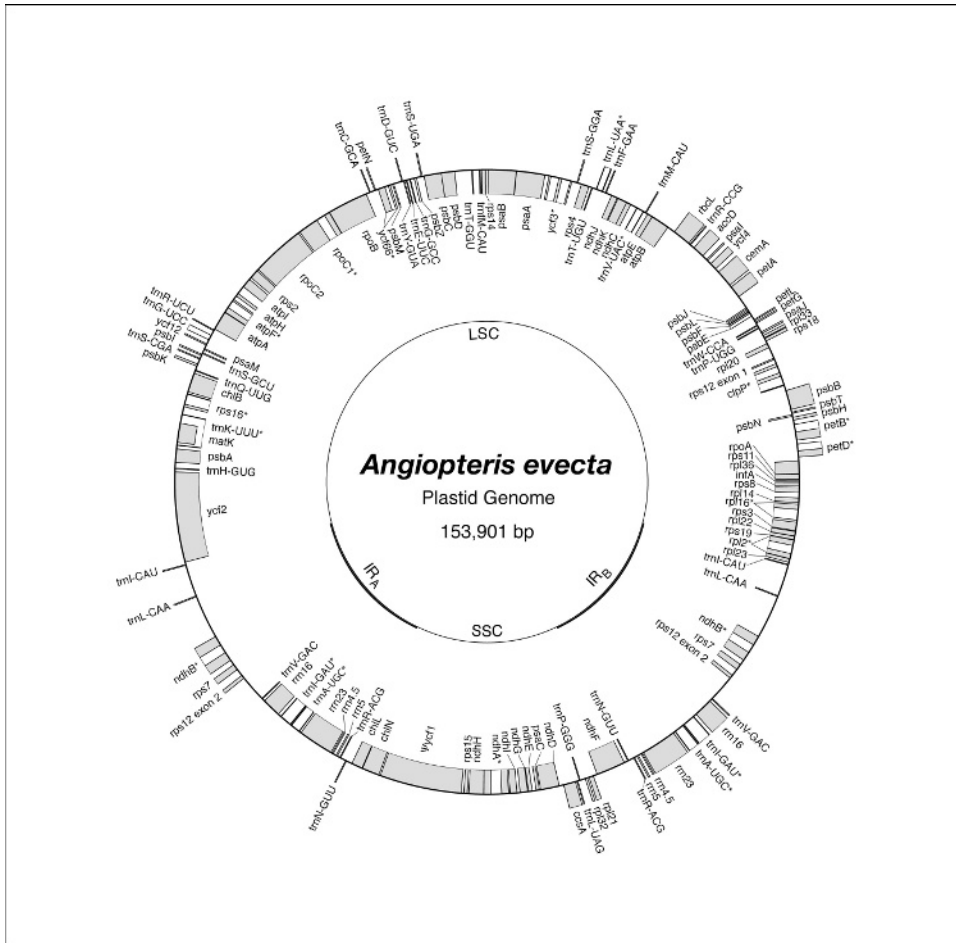


FIG. 1. Circular genome map of the plastid genome of *Angiopteris evecta*. Genes appearing on the outside of the circle are transcribed clockwise; genes on the inside are transcribed counterclockwise. Ψ denotes putative pseudogene. A 10 kb region is marked on the right to show the scale.

the SSC extends from *ccsA* to *ycf1*, whereas in *Angiopteris* the SSC is longer and extends from *ndhF* to *chlL* (Fig. 2). Gene order at the LSC-IR boundary of *Angiopteris* is very similar to that of *Psilotum*, differing only in the sizes of intergenic regions rather than gene positions (Fig. 3). The overall gene order within the IR is similar to that of seed plants and *Psilotum*, consistent with the hypothesis that this region sustained several rearrangements at some time during the diversification of leptosporangiate ferns (Hasebe and Iwatsuki, 1992; Stein *et al.*, 1992). An inversion of about 3Kb, involving *psbD*, *psbC*, and *psbZ*, was previously detected in *Psilotum* and *Adiantum* relative to other land plants, and more recently documented in the plastid genome of *Equisetum* (K. Karol, personal communication). This inversion is also seen in *Angiopteris*, thus providing a potential phylogenetic marker for the monilophyte clade.

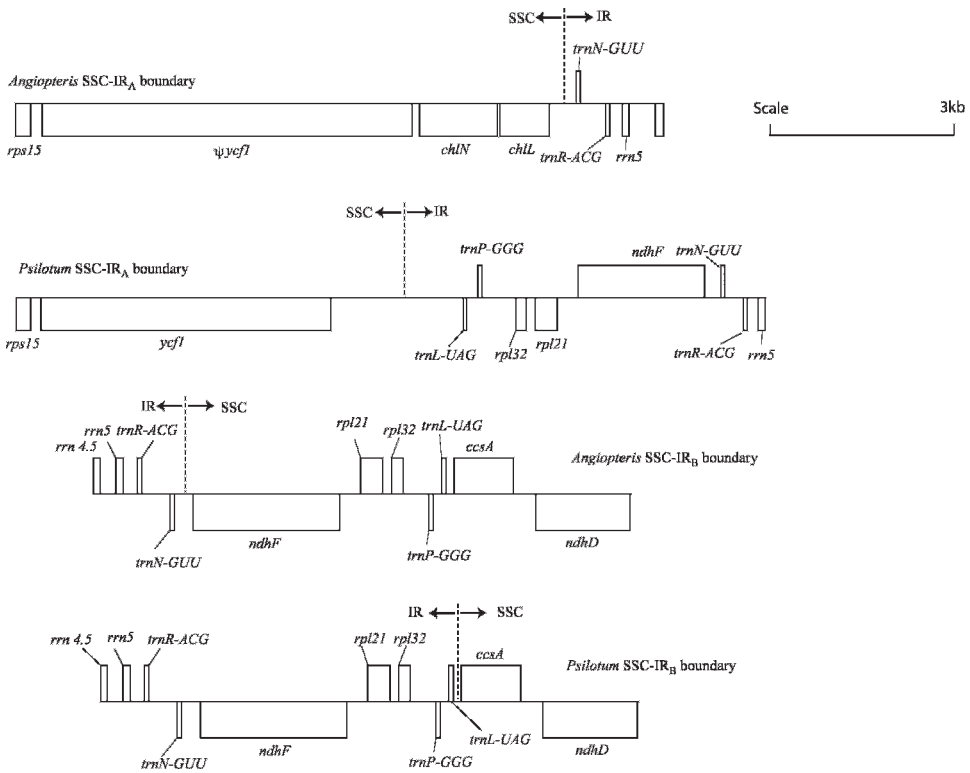


FIG. 2. Diagram of the SSC-IR boundaries, comparing the gene order of *Psilotum nudum* (GenBank accession AP004638) with *Angiopteris evecta* (GenBank accession DQ821119).

Another region of interest is in the LSC between *rpoB* and *psbZ*. This region has the same gene order in *Psilotum* and *Angiopteris* so it is likely to be an ancestral monilophyte organization. The *Adiantum* gene order differs from that of *Angiopteris* and *Psilotum* in this region. However the gene order difference cannot be explained by a single inversion. Instead, at least two overlapping inversions are required to explain the variation. Fig. 4 presents two alternative most-parsimonious pathways from a putative ancestral monilophyte gene order to that of *Adiantum*. Analysis of this region from several clades of leptosporangiate clades may help determine which sequence of events occurred.

One gene that we have not annotated is that for the hypothetical protein ycf68. Although found in several land plant plastid genomes, this gene is usually not annotated, perhaps because it is a relatively short reading frame (approximately 600 bp) and its function is unknown. In *Angiopteris* it is located in the IR at positions 104265–104639 and 139346–138972. However, there are at least three frameshifts, suggesting that ycf68 is a pseudogene.

The *Angiopteris* plastid genome contains several regions with repeat structure. Results from the analysis by REPuter revealed two main regions of

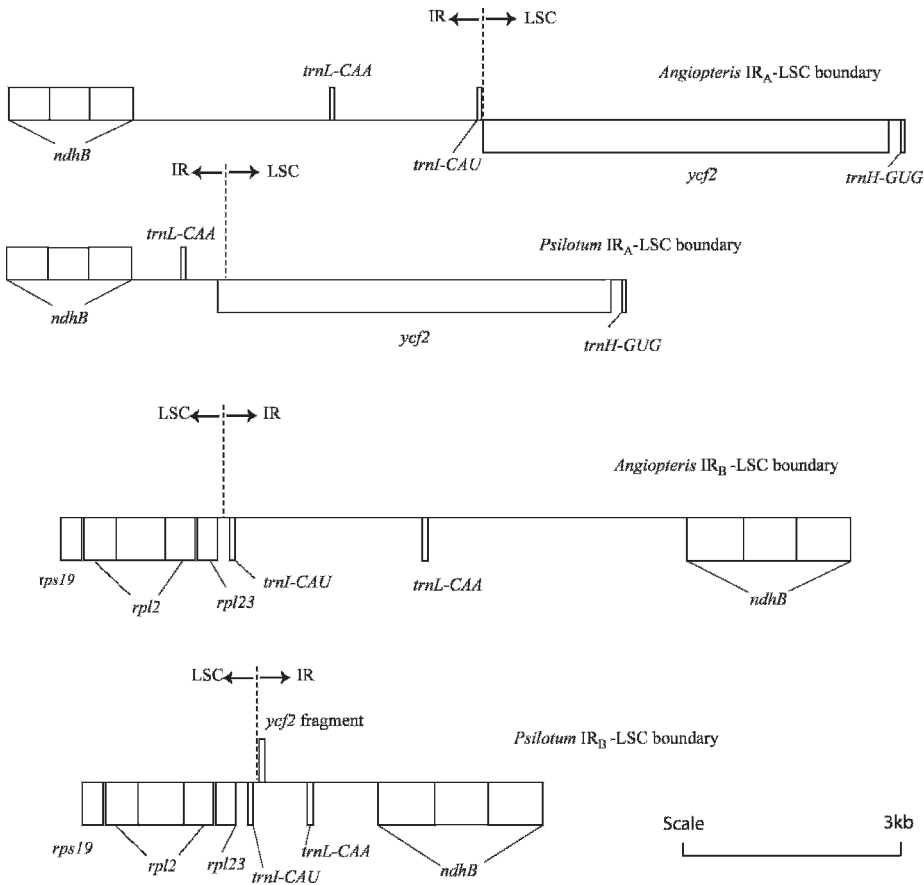


FIG. 3. Diagram of the LSC-IR boundaries, comparing that of *Psilotum nudum* with *Angiopteris evecta*.

long repeats (more than 20 bp). We found an 817 bp direct repeat within the region annotated as the pseudogene for the hypothetical protein *ycf1* in the SSC, as well as a 352 bp string with a 95% similarity to the reverse complement also in the same region. Either several duplications or inversions resulted in *ycf1* becoming a pseudogene, or its loss of function lifted selective constraints against such structural rearrangements. The remaining repeat regions were all at the beginning of the IR between *trnI* and *trnL*. This region is highly variable in several plastid genomes, probably due to the creation of partial genes during expansion and contraction of the IR (Goulding *et al.*, 1996; Palmer, 1991).

We found no stop codons within otherwise open reading frames and no other obvious indications that RNA editing would be required. The *ycf1* pseudogene was too drastically different from heterologous *ycf1* sequences to explain the differences by RNA editing. However, absence of evidence is not evidence of absence; RNA editing can only be tested by sequencing cDNAs.



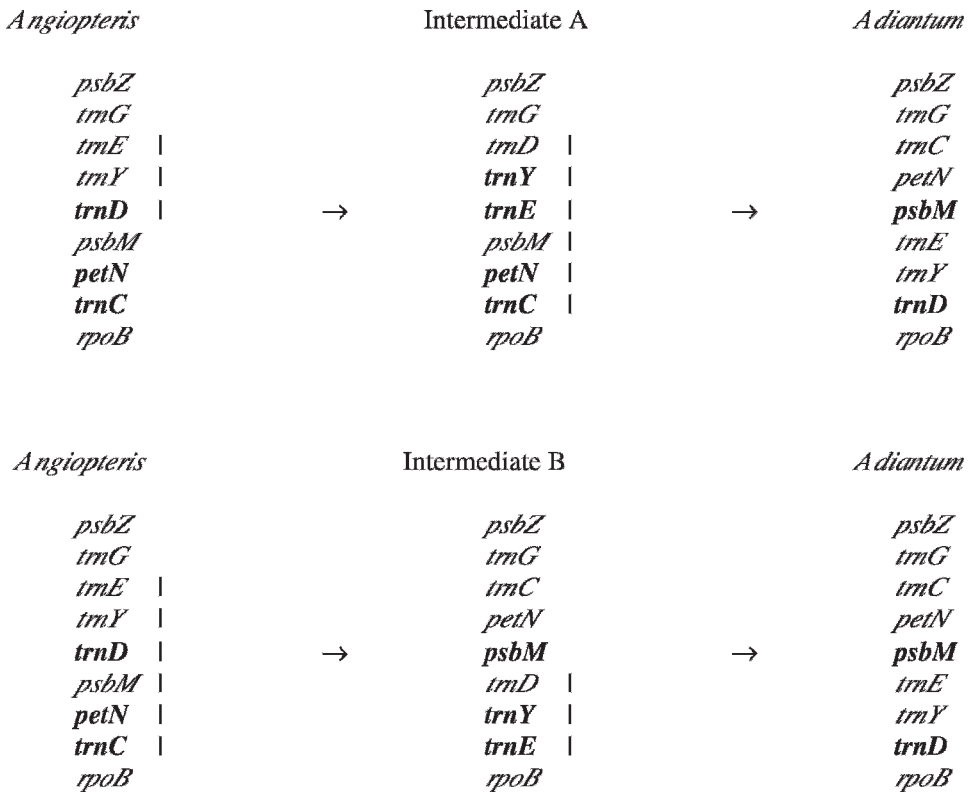


FIG. 4. Two hypothetical pathways to explain the gene order difference in the LSC of *Angiopteris* and *Adiantum* plastid genomes. Vertical bars denote regions that become inverted to produce the next gene order to the right.

This has only been done systematically for two chloroplast genes (*ndhB* and *rbcL*) in all major lineages of land plants (Freyer *et al.*, 1997). The complete set of transcripts from chloroplast genes has only been examined in one liverwort, *Anthoceros*, (Kugita *et al.*, 2003) and one leptosporangiate fern, *Adiantum capillus-veneris* (Wolf *et al.*, 2004), for which 350 RNA edited sites were detected. Thus, it remains unclear whether high levels of RNA editing are derived or ancestral within monilophytes.

Why have the plastid genome structures of *Angiopteris* and *Ptilotum* remained so constant over such a long period of evolutionary time? The most-recent common ancestor of *Angiopteris* and *Ptilotum* probably lived over 400 million years ago (Pryer *et al.*, 2004a). Plastid genome structure has evolved rapidly in several younger clades such as *Geranium* (Palmer *et al.*, 1987a) and Campanulaceae (Cosner *et al.*, 2004). Some events have been correlated with loss of structural stability, such as loss of the inverted repeat (Palmer *et al.*, 1987b). Clearly, plastid genome structure does not evolve in a clock-like manner. In fact, it is for this reason that structural changes can

provide useful phylogenetic markers. Gene order can take on many possible states whereas DNA sequences have only four states. Thus, structural changes are more complex than nucleotide substitutions: reversion to an ancestral gene order is unlikely compared to reversion to an ancestral base in the DNA sequence. Long evolutionary branches have, on average, more opportunity to accumulate changes. However, the non-clock-like nature of structural changes provides a chance for them to become phylogenetic markers on short branches where signal is weak in DNA sequence data. The conservation of plastid genome structure between *Angiopteris* and *Psilotum* is either a function of long term stability in both lineages, or independent (and perhaps repeated) convergence to a more stable structure and gene order. Distinguishing these hypotheses can only be achieved with more genome structural data from additional clades, and such information is needed if we are to understand more about the levels of homoplasy for structural genomic characters.

If the plastid genome structure of *Angiopteris* has indeed remained constant since the origin of monilophytes, this would correlate with other evolutionary trends in the Marattiaceae. Analysis of rates of molecular evolution for nuclear and plastid genes revealed reduced substitution rates in both the Marattiaceae and in the tree fern clade (Soltis *et al.*, 2002). If genome structure has also been evolving slowly in Marattiaceae this would imply a correlation of evolutionary rates for morphology, DNA sequences, and genome structure. Testing for such a correlation would require more data on genome structure, including nuclear genomes, from more taxa.

*Angiopteris* represents an ancient lineage whose affinities to other monilophytes is currently unresolved. Most analyses of DNA sequence data suggest a sister relationship of Marattiaceae to Equisetaceae, the horsetails (Wilkström and Pryer, 2005). If so, this would be an ancient clade, with little signal remaining. Data are forthcoming on the plastid genome of *Equisetum*, in addition to the mitochondrial genomes of *Angiopteris* and *Equisetum* (K. Karol, personal communication), and it is hoped that additional phylogenetic information will soon be provided.

The circular diagram depicted in Fig. 1 is, like all such genome maps, a visual representation of something far more complex. One unusual feature of plastid genomes is that the LSC and SSC have alternative orientations relative to the IR within a single organelle (Palmer, 1983). This so-called flip-flop recombination has also been documented for plastid genomes in the fern *Osmunda* (Stein *et al.*, 1986). Thus, the relative orientations of the LSC and SSC in any map are arbitrary. Furthermore, experiments with native chloroplast genomes indicate that, at least in some situations, most molecules are linear and some even branched, with few displaying the more familiar circular structure depicted in most maps (Oldenburg and Bendich, 2004).

We provide here the first complete plastid genome sequence from the marattioid clade of plants. Availability of this sequence can enable researchers to design conserved primers to PCR-amplify and sequence new genomic regions that could provide useful phylogenetic information not available from the array of regions usually studied in ferns (Small *et al.*, 2005). In addition,

the structural details of the *Angiopteris* plastid genome join a growing database from other green plants. Ultimately such data can be used to infer phylogeny as well as help understand evolutionary process at both the sequence and genome structural levels.

#### ACKNOWLEDGMENTS

Thanks to Aru Arumagnathan for FACS expertise, Tiffany Sorrentino for lab assistance, Norm Wickett for help with drawing the genome map, and M. Winston Ellis and Carol Rowe for comments on the manuscript. Aaron Duffy assisted with the structural analysis and two anonymous reviewers made helpful suggestions to improve the manuscript. This research was supported by the Green Tree of Life Project, funded by the National Science Foundation: <http://ucjeps.berkeley.edu/TreeofLife/>. Work at the Joint Genome Institute was performed under the auspices of the U.S. Department of Energy's Office of Science, Biological and Environmental Research Program, and by the University of California, Lawrence Berkeley National Laboratory under Contract No. DE-AC02-05CH11231.

#### LITERATURE CITED

- ALTSCHUL, S. F., T. L. MADDEN, A. A. SCHAFER, J. ZHANG, Z. ZHANG, W. MILLER and D. J. LIPMAN. 1997. Gapped BLAST and PSI-BLAST: a new generation of protein database search programs. *Nucl. Acids Res.* 25:3389–3402.
- COSNER, M. A., L. A. RAUBESON and R. K. JANSEN. 2004. Chloroplast DNA rearrangements in Campanulaceae: phylogenetic utility of highly rearranged genomes. *BMC Evol. Biol.* 4:1–17.
- DEAN, F. B., J. R. NELSON, T. L. GIESLER and R. S. LASKEN. 2001. Rapid amplification of plasmid and phage DNA using Phi 29 DNA polymerase and multiply-primed rolling circle. *Genome Res.* 11:1095–1099.
- ELKIN, C. J., P. M. RICHARDSON, H. M. FOURCADE, N. M. HAMMON, M. J. POLLARD, P. F. PREDKI, T. GLAVINA and T. L. HAWKINS. 2001. High-throughput plasmid purification for capillary sequencing. *Genome Res.* 11:1269–1274.
- EWING, B. and P. GREEN. 1998. Base-calling of automated sequencer traces using phred. II. Error probabilities. *Genome Res.* 8:186–194.
- EWING, B., L. HILLIER, M. C. WENDL and P. GREEN. 1998. Base-calling of automated sequencer traces using phred. I. Accuracy assessment. *Genome Res.* 8:175–185.
- FREYER, R., M.-C. KIEFER-MAYER and H. KÖSSEL. 1997. Occurrence of plastid RNA editing in all major lineages of land plants. *Proc. Natl. Acad. Sci. (USA)* 94:6285–6290.
- GORDON, D., C. ABAJIAN and P. GREEN. 1998. Consed: a graphical tool for sequence finishing. *Genome Res.* 8:195–202.
- GOULDING, S. E., R. G. OLMSTEAD, C. W. MORDEN and K. H. WOLFE. 1996. Ebb and flow of the chloroplast inverted repeat. *Mol. Gen. Genet.* 252:195–206.
- HASEBE, M. and K. IWATSUKI. 1992. Gene localization on the chloroplast DNA of the maiden hair fern: *Adiantum capillis-veneris*. *Bot. Mag. Tokyo* 105:413–419.
- HASEBE, M., T. OMORI, M. NAKAZAWA, T. SANO, M. KATO and K. IWATSUKI. 1994. *RbcL* gene sequences provide evidence for the evolutionary lineages of leptosporangiate ferns. *Proc. Natl. Acad. Sci. (USA)* 91:5730–5734.
- HASEBE, M., P. G. WOLF, K. M. PRYER, K. UEDA, M. ITO, R. SANO, G. J. GASTONY, J. YOKOYAMA, J. R. MANHART, N. MURAKAMI, E. H. CRANE, C. H. HAUFLE and W. D. HAUKE. 1995. Fern phylogeny based on *rbcL* nucleotide sequences. *Amer. Fern J.* 85:134–181.
- HILL, C. R. and J. M. CAMUS. 1986. Evolutionary cladistics of marattalian ferns. *Bull. Brit. Mus. (Nat. Hist.)*, Botany Series 14:219–300.
- KENRICK, P. and P. R. CRANE. 1997. *The Origin and Early Diversification of Land Plants: A Cladistic Study*. Smithsonian Press, Washington, DC, U.S.A.

- KUGITA, M., Y. YAMAMOTO, T. FUJIKAWA, T. MATSUMOTO and K. YOSHINAGA. 2003. RNA editing in hornwort chloroplasts makes more than half the genes functional. *Nucl. Acids Res.* 31:2417–2423.
- KURTZ, S., J. V. CHOUDHURI, E. OHLEBUSCH, C. SCHLEIERMACHER, J. STOYE and R. GIEGERICH. 2001. REPuter: the manifold applications of repeat analysis on a genomic scale. *Nucl. Acids Res.* 29:4633–4642.
- OLDENBURG, D. J. and A. J. BENDICH. 2004. Most chloroplast DNA of maize seedlings in linear molecules with defined ends and branched forms. *J. Mol. Biol.* 335:953–970.
- PALMER, J. D. 1983. Chloroplast DNA exists in two orientations. *Nature* 301:92–93.
- PALMER, J. D. 1985. Comparative organization of chloroplast genomes. *Ann. Rev. Genet.* 19:325–354.
- PALMER, J. D. 1991. Plastid Chromosomes: Structure and Evolution. Pp. 5–53, in L. Bogorad, ed. *Molecular biology of plastids*. Academic Press, Orlando, FL.
- PALMER, J. D., J. M. NUGENT and L. A. HERBON. 1987a. Unusual structure of *Geranium* chloroplast DNA: A triple-sized inverted repeat, extensive gene duplications, multiple inversions, and two repeat families. *Proc. Natl. Acad. Sci. (USA)* 84:769–773.
- PALMER, J. D., B. OSORIO, J. ALDRICH and W. F. THOMPSON. 1987b. Chloroplast DNA evolution among legumes: Loss of a large inverted repeat occurred prior to other sequence rearrangements. *Curr. Genet.* 11:275–286.
- PRYER, K. M., H. SCHNEIDER and S. MAGALLÓN. 2004a. The radiation of Vascular plants. In J. Cracraft and M. J. Donoghue, eds. *Assembling the Tree of Life*. Oxford University Press, New York.
- PRYER, K. M., E. SCHUETTPELZ, P. G. WOLF, H. SCHNEIDER, A. R. SMITH and R. CRANFILL. 2004b. Phylogeny and evolution of ferns (monilophytes) with a focus on the early leptosporangiate divergences. *Amer. J. Bot.* 91:1582–1598.
- PRYER, K. M., H. SCHNEIDER, A. R. SMITH, R. CRANFILL, P. G. WOLF, J. S. HUNT and S. D. SIPES. 2001. Horsetails and ferns are a monophyletic group and the closest living relatives to seed plants. *Nature* 409:618–622.
- RAUBESON, L. A. and R. K. JANSEN. 1992. Chloroplast DNA evidence on the ancient evolutionary split in vascular land plants. *Science* 255:1697–2699.
- RAUBESON, L. A. and D. B. STEIN. 1995. Insights into fern evolution from mapping chloroplast genomes. *Amer. Fern J.* 85:193–204.
- SAMBROOK, E., F. FRITZCH and T. MANIATIS. 1989. *Molecular Cloning: A Laboratory Manual, 2nd edition*. Cold Spring Harbor Laboratory Press, Cold Spring Harbor, New York.
- SMALL, R. L., E. B. LICKY, J. SHAW and W. D. HAUKE. 2005. Amplification of noncoding chloroplast DNA for phylogenetic studies in lycophytes and monilophytes with a comparative example of relative phylogenetic utility from Ophioglossaceae. *Mol. Phylogenet. and Evol.* 36:509–522.
- SMITH, A. R., K. M. PRYER, E. SCHUETTPELZ, P. KORALL, H. SCHNEIDER and P. G. WOLF. 2006. A classification of extant ferns. *Taxon* 55:705–731.
- SOLTIS, P. S., D. E. SOLTIS, V. SAVOLAINEN, P. R. CRANE and T. G. BARRACLOUGH. 2002. Rate heterogeneity among lineages of tracheophytes: Integration of molecular and fossil data and evidence for molecular living fossils. *Proc. Natl. Acad. Sci. (USA)* 99:4430–4435.
- STEIN, D. B., J. D. PALMER and W. F. THOMPSON. 1986. Structural evolution and flip-flop recombination of chloroplast DNA in the fern genus *Osmunda*. *Current Genetics* 10:835–841.
- STEIN, D. B., G. YATSKIEVYCH and G. J. GASTONY. 1989. Chloroplast DNA evolution and phylogeny of some polystichoid ferns. *Biochem. Syst. Ecol.* 17:93–101.
- STEIN, D. B., D. S. CONANT, M. E. AHEARN, E. T. JORDAN, S. A. KIRCH, M. HASEBE, K. IWATSUKI, M. K. TAN and J. A. THOMASON. 1992. Structural rearrangements of the chloroplast genome provide an important phylogenetic link in ferns. *Proc. Natl. Acad. Sci. (USA)* 89:1856–1860.
- STEWART, W. W. and G. W. ROTHWELL. 1993. *Paleobotany and the Evolution of Plants*. Cambridge University Press, Cambridge.
- WILKSTRÖM, N. and K. M. PRYER. 2005. Incongruence between primary sequence data and the distribution of a mitochondrial *atp1* group II intron among ferns and horsetails. *Mol. Phylogenet. and Evol.* 36:484–493.

- WOLF, P. G., C. A. ROWE and M. HASEBE. 2004. High levels of RNA editing in a vascular plant chloroplast genome: analysis of transcripts from the fern *Adiantum capillus-veneris*. *Gene* 339:89–97.
- WOLF, P. G., C. A. ROWE, R. B. SINCLAIR and M. HASEBE. 2003. Complete nucleotide sequence of the chloroplast genome from a leptosporangiate fern, *Adiantum capillus-veneris* L. *DNA Res.* 10:59–65.
- WYMAN, S. K., J. L. BOORE and R. K. JANSEN. 2004. Automatic annotation of organellar genomes with DOGMA. *Bioinformatics*.