



**FIELD EVALUATION OF A SYNTHETIC FEMALE SEX
PHEROMONE FOR THE LEAFMINING MOTH
PHYLLOCNISTIS CITRELLA (LEPIDOPTERA:
GRACILLARIIDAE) IN FLORIDA CITRUS**

Authors: Lapointe, Stephen L., Hall, David G., Murata, Yasuhiro, Parra-Pedrazzoli, Ana Lia, Bento, José Maurício S., et al.

Source: Florida Entomologist, 89(2) : 274-276

Published By: Florida Entomological Society

URL: [https://doi.org/10.1653/0015-4040\(2006\)89\[274:FEOASF\]2.0.CO;2](https://doi.org/10.1653/0015-4040(2006)89[274:FEOASF]2.0.CO;2)

BioOne Complete (complete.BioOne.org) is a full-text database of 200 subscribed and open-access titles in the biological, ecological, and environmental sciences published by nonprofit societies, associations, museums, institutions, and presses.

Your use of this PDF, the BioOne Complete website, and all posted and associated content indicates your acceptance of BioOne's Terms of Use, available at www.bioone.org/terms-of-use.

Usage of BioOne Complete content is strictly limited to personal, educational, and non - commercial use. Commercial inquiries or rights and permissions requests should be directed to the individual publisher as copyright holder.

BioOne sees sustainable scholarly publishing as an inherently collaborative enterprise connecting authors, nonprofit publishers, academic institutions, research libraries, and research funders in the common goal of maximizing access to critical research.

FIELD EVALUATION OF A SYNTHETIC FEMALE SEX PHEROMONE FOR THE LEAFMINING MOTH *PHYLLOCNISTIS CITRELLA* (LEPIDOPTERA: GRACILLARIIDAE) IN FLORIDA CITRUS

STEPHEN L. LAPOINTE¹, DAVID G. HALL¹, YASUHIRO MURATA², ANA LIA PARRA-PEDRAZZOLI^{3,5},
JOSÉ MAURÍCIO S. BENTO³, EVALDO F. VILELA⁴ AND WALTER S. LEAL⁵

¹USDA-ARS, U.S. Horticultural Research Laboratory, 2001 South Rock Road, Ft. Pierce, FL 34945

²Fuji Flavor Co. Ltd., 3-5-8 Midorigaoka, Hamura-city Tokyo 205-8503, Japan

³Depto de Entomologia, Fitopatologia e Zoologia Agrícola, Escola Superior de Agricultura Luiz de Queiroz (ESALQ) Universidade de São Paulo (USP), Piracicaba, SP 13418-900, Brazil

⁴Universidade Federal de Viçosa, Viçosa, MG 36571-000, Brazil

⁵Maeda-Duffey Laboratory, Department of Entomology, University of California, Davis, CA 95616

The leafmining moth, *Phyllocnistis citrella* Stainton (Lepidoptera: Gracillariidae), was discovered in southern Florida in 1993 (Heppner 1993) and has since spread to all Florida citrus-growing counties and the states of Alabama, Louisiana, Texas in 1994, and California (Gil 1999) and Hawaii in 2000 (Nagamine & Heu 2003). Damage includes loss of photosynthetic capacity from mining, stunting and malformation of leaves, and potential damage from increased susceptibility of leafminer-damaged leaves to the citrus canker pathogen (Bergamin-Filho et al. 2000; Cook 1988).

Ando et al. (1985) found attraction in Japanese populations of *P. citrella* to traps baited with (Z,Z)-7,11-hexadecadienal. Attempts to show attraction of this material to populations in other countries were not successful (Sant'ana et al. 2003). Leal et al. (2006) found the three active compounds (Z,Z,E)-7,11,13-hexadecatrienal [Z7Z11E13-16Ald], (Z,Z)-7,11-hexadecadienal [Z7Z11-16Ald], and (Z)-7-hexadecenal [Z7-16Ald] by electroantennograms (EAG) from female pheromone gland extracts of a Brazilian population of *P. citrella* in a ratio of 30:10:1, respectively (Fig. 1). They also demonstrated that traps baited with a mixture of the two major constituents caught more males than traps baited with virgin female *P. citrella*.

Here we report the results from two field trials. The first documents attraction to a binary lure consisting of the two major EAG-active components. In the second trial, we deployed a factorial design to determine the influence of trap height in a mature citrus grove on trap catch and the relative attraction of a binary and a tertiary lure. For the first trial, six traps (Pherocon 1C Wing Trap, Trecé, Inc., Adair, OK) were deployed in a citrus grove at the experimental farm of the U.S. Horticultural Research Laboratory, Ft. Pierce, FL. Three traps were baited with rubber septa impregnated with a binary pheromone mixture con-

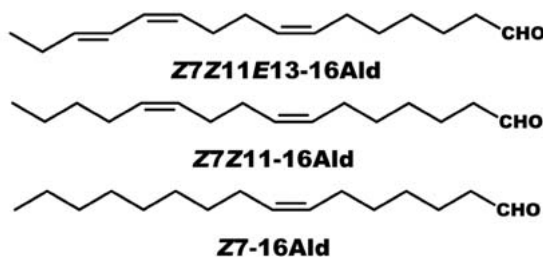


Fig. 1. Chemical structure of three semiochemicals isolated from pheromone gland extracts of the leafmining moth *P. citrella*.

sisting of Z7Z11E13-16Ald (96% pure) and Z7Z11-16Ald (98% pure) in a ratio of 3:1, and three traps were left without lures as controls. Septa were loaded with 50 µg of the major and 17 µg of the minor compound in 100 µl hexane per septum. Traps were randomly assigned to orange trees (approximately 2 m tall) within a section of 6 rows of 29 trees/row naturally infested with citrus leafminer. Traps were rotated daily between trees and the adhesive cards were removed daily and examined for the presence of *P. citrella*. Traps were deployed and counted for 3 d in August, 2005.

For the second trial, a factorial design (3 × 3 × 6) was used to investigate the effect of trap height and pheromone lure composition on trap catch over 6 d. Traps were deployed at heights of 1.3, 1.7, and 2.0 m within the same section of orange trees used in Trial 1. Traps were baited with septa impregnated with either the binary mixture as in Trial 1, a tertiary blend consisting of Z7Z11E13-16Ald and Z7Z11-16Ald and Z7-16Ald in a ratio of 30:10:1, or control septa impregnated with 100 µl hexane. Three replications were used for a total of 27 traps per d and 162 (3 height × 3 lures × 6 d) total traps counted over 6 d. Traps were randomly assigned to trees within the section. Spacing of the trees was 4.6 m within rows

and 7.6 m between rows. Adjacent trees were avoided to maintain a minimum of 9 m between traps. Traps with corresponding lures and fresh adhesive cards were randomly re-assigned to trees daily. Traps were deployed and counted for 6 d in August, 2005. During hurricane Katrina, traps and lures were removed; lures were stored at -80°C and re-deployed 3 d later. High levels of parasitization of leafminer larvae in the field, presumably by *Ageniaspis citricola* (Hymenoptera: Encyrtidae), interfered with our attempts to rear virgin female leafminers to compare with the synthetic lures.

Counts were made of the entire card (23 × 28 cm). We transformed data to normalize residuals before analysis by using natural log (x + 1). All tests of significance were based on transformed data. Untransformed means are presented. Data were analyzed by ANOVA. When significant differences were indicated by the *F* statistic at $\alpha = 0.05$, means were separated by Fisher's protected least significant difference (LSD) (Abacus Concepts 1996).

No *P. citrella* adults were captured in the unbaited traps with the exception of one adult on d 3. A total of 391 *P. citrella* was captured in traps baited with the binary lure. There was no significant effect of d ($F = 2.73$; $df = 2, 12$; $P = 0.106$). More *P. citrella* were captured in traps baited

with the binary lure ($F = 9.92$; $df = 1, 16$; $P < 0.0001$). The binary lure attracted a mean (\pm SEM) of 43.4 ± 7.8 compared with 0.4 ± 0.3 adults/trap/d in the control traps.

In the second trial, a total of 6 adult *P. citrella* over 6 d was found in traps baited without pheromone. Traps baited with the binary mixture caught a total of 508 *P. citrella* and the tertiary mixture caught 605 *P. citrella*. There was no effect of trap height on trap catch ($F = 1.02$; $df = 2, 108$; $P = 0.366$). There was a significant effect of d on trap catch ($F = 6.90$; $df = 5, 144$; $P < 0.0001$) (Table 1) with a significant lure × day interaction ($F = 1.96$; $df = 10, 144$; $P = 0.042$). The effect of lure was significant ($F = 358.52$; $df = 2, 144$; $P < 0.0001$). There was no significant difference between the binary and tertiary lures for any of the days tested except for d 1 when there was a significant height effect ($F = 3.90$; $df = 2, 18$; $P = 0.039$) and a significant interaction between height and lure ($F = 3.90$; $df = 4, 18$; $P = 0.019$). This was due to a higher capture in the traps baited with the tertiary lure at 2 m (39.3 ± 7.4) compared with 13.7 ± 2.0 at 1.3 m and 17.7 ± 7.4 at 0.7 m. On all subsequent days there was no effect of height, no significant difference between binary and tertiary lures, nor was there a significant interaction between height and lure ($\alpha = 0.05$) (Table 1).

SUMMARY

Traps baited with a binary mixture in the ratio of 30:10 of two EAG-active compounds, (*Z,Z,E*)-7,11,13-hexadecatrienal and (*Z,Z*)-7,11-hexadecadienal, attracted significantly more moths of the leafmining moth *P. citrella* compared with unbaited traps in a Florida citrus grove. The addition of a third EAG-active compound, (*Z*)-7-hexadecenal, did not increase trap catch. Trap height, at 0.7, 1.3, and 2 m did not significantly affect daily trap catch on 5 of 6 d. Mention of a trademark or proprietary product does not constitute a guarantee or warranty of the product by the U.S. Department of Agriculture and does not imply its approval to the exclusion of other products that also may be suitable.

REFERENCES CITED

- ABACUS CONCEPTS. 1996. StatView Reference. Berkeley, CA.
- ANDO, T., K. Y. TAGUCHI, M. UCHIYAMA, T. UJIYE, AND H. KUROKO. 1985. (*Z*-11*Z*)-7,11-hexadecadienal: sex attractant of the citrus leafminer moth, *Phyllocnistis citrella* Stainton (Lepidoptera, Phyllocnistidae). Agric. Biol. Chem. Tokyo 49: 3633-3653.
- BERGAMIN-FILHO, A., L. AMORIM, F. LARANJEIRA, AND T. R. GOTTFELD. 2000. Epidemiology of citrus canker in Brazil with and without the Asian citrus leafminer. (Abstr.) In Proceedings of the International Citrus Canker Research Workshop, Ft. Pierce FL, June 20-22, 2000. Online. Division of Plant Industry,

TABLE 1. MEAN (\pm SEM, $n = 3$) NUMBER OF *P. CITRELLA* ADULTS CAPTURED IN TRAPS BAITED WITH RUBBER SEPTA IMPREGNATED WITH A BINARY LURE, A TERTIARY LURE, OR UNBAITED (CONTROL) OVER 6 D AT FT. PIERCE, FL.

Day	Lure	Catch
1	Control	0.2 + 0.1 a
	Binary	15.0 + 2.4 b
	Tertiary	23.6 + 4.8 c
2	Control	0.2 + 0.1 a
	Binary	6.6 + 1.5 b
	Tertiary	7.0 + 1.5 b
3	Control	0.1 + 0.1 a
	Binary	8.4 + 1.1 b
	Tertiary	12.3 + 3.7 b
4	Control	0.0 + 0.0 a
	Binary	7.3 + 1.8 b
	Tertiary	6.9 + 1.6 b
5	Control	0.0 + 0.0 a
	Binary	10.4 + 1.6 b
	Tertiary	9.9 + 1.9 b
6	Control	0.1 + 0.1 a
	Binary	8.7 + 1.2 b
	Tertiary	7.6 + 1.2 b

Means grouped by d followed by the same letter are not significantly different ($\alpha = 0.05$, Fisher's protected LSD).

- Florida Department of Agriculture and Consumer Services.
- COOK, A. A. 1988. Association of citrus canker pustules with leafminer tunnels in North Yemen. *Plant Dis.* 72: 546.
- GIL, R. J. 1999. Citrus leafminer found in California. California Department of Food and Agriculture, California Plant Pest & Disease Report 18: 79-80.
- HEPPNER, J. B. 1993. Citrus leafminer, *Phyllocnistis citrella*, in Florida (Lepidoptera: Gracillariidae: Phyllocnistinae). *Trop. Lepid.* 4: 49-64.
- LEAL, W. S., A. L. PARRA-PEDRAZZOLI, A. A. COSSÉ, Y. MURATA, J. M. S. BENTO, AND E. F. VILELA. 2006. Identification, synthesis, and field evaluation of the sex pheromone from the citrus leafminer, *Phyllocnistis citrella*. *J. Chem. Ecol.* 32(1): 155-168.
- NAGAMINE, W. T., AND R. A. HEU. 2003. Citrus leafminer *Phyllocnistis citrella* Stainton (Lepidoptera: Gracillariidae). State of Hawaii, Department of Agriculture, New Pest Advisory No. 00-01, available at <http://www.hawaiiag.org/hdoa/npa/npa00-01-clminer2.pdf>
- SANT'ANA, J., E. CORSEUIL, A. G. CORREA, AND E. F. VILELA. 2003. Evaluation of *Phyllocnistis citrella* Stainton (Lepidoptera, Gracillariidae) attraction to (*Z,Z*) and (*Z,E*)-7,11-hexadecadienal in citrus orchards in Brazil. *BioCiencias.* 11: 177-181.