

## **A New Species of Anteon (Hymenoptera: Dryinidae) from Argentina**

Authors: Olmi, Massimo, and Virla, Eduardo G.

Source: Florida Entomologist, 91(2) : 159-161

Published By: Florida Entomological Society

URL: [https://doi.org/10.1653/0015-4040\(2008\)91\[159:ANSOAH\]2.0.CO;2](https://doi.org/10.1653/0015-4040(2008)91[159:ANSOAH]2.0.CO;2)

---

The BioOne Digital Library (<https://bioone.org/>) provides worldwide distribution for more than 580 journals and eBooks from BioOne's community of over 150 nonprofit societies, research institutions, and university presses in the biological, ecological, and environmental sciences. The BioOne Digital Library encompasses the flagship aggregation BioOne Complete (<https://bioone.org/subscribe>), the BioOne Complete Archive (<https://bioone.org/archive>), and the BioOne eBooks program offerings ESA eBook Collection (<https://bioone.org/esa-ebooks>) and CSIRO Publishing BioSelect Collection (<https://bioone.org/csiro-ebooks>).

Your use of this PDF, the BioOne Digital Library, and all posted and associated content indicates your acceptance of BioOne's Terms of Use, available at [www.bioone.org/terms-of-use](http://www.bioone.org/terms-of-use).

Usage of BioOne Digital Library content is strictly limited to personal, educational, and non-commercial use. Commercial inquiries or rights and permissions requests should be directed to the individual publisher as copyright holder.

---

BioOne is an innovative nonprofit that sees sustainable scholarly publishing as an inherently collaborative enterprise connecting authors, nonprofit publishers, academic institutions, research libraries, and research funders in the common goal of maximizing access to critical research.

A NEW SPECIES OF *ANTEON* (HYMENOPTERA: DRYINIDAE)  
FROM ARGENTINAMASSIMO OLMI<sup>1</sup> AND EDUARDO G. VIRLA<sup>2</sup><sup>1</sup>Department of Plant Protection, University of Tuscia, I-01100 Viterbo, Italy<sup>2</sup>PROIMI-Biotechnology, Biological Control Division, Av. Belgrano y Pje. Caseros (T4001 MBV), San Miguel de Tucumán, Argentina

## ABSTRACT

A new species, *Anteon tucumanense*, is described from San Miguel de Tucumán (Tucumán Province, Argentina). This new species can be distinguished from the related Neotropical species *A. molle* Olmi and *A. parkeri* Olmi by differences in segment 5 of the fore tarsus (distal part large and straight in *A. tucumanense*, slender and curved in the other 2 species). A key is provided for the determinations of the above species with an illustration of the female chela of the new species.

Key Words: Taxonomy, Hymenoptera, Dryinidae, *Anteon tucumanense*, new species, Argentina

## RESUMEN

Se describe la nueva especie *Anteon tucumanense* de San Miguel de Tucumán (Provincia de Tucumán, Argentina). *A. tucumanense* puede ser diferenciada de las especies neotropicales relacionadas, *A. molle* Olmi y *A. parkeri* Olmi, por diferencias en la forma del quinto segmento de los tarsos anteriores (con la parte distal ancha, robusta y derecha en *A. tucumanense*; con la parte distal angosta, delicada y curva en las otras dos especies). Se provee una clave para la determinación de las especies antedichas y la ilustración de la quela de la nueva especie.

Translation provided by the authors.

*Anteon* Jurine, 1807 was last revised by Olmi (1984). It contains about 326 described species from all continents (Olmi 1999). However, since then many new species have been described, another revision is necessary.

The species of *Anteon* inhabiting Argentina were studied mainly by Ogloblin (1938); Olmi (1984, 1987, 1991, 1992); Olmi et al. (2000); Olmi & Virla (2004); Virla (1998); and Virla & Olmi (1998). In 2007 we have examined additional specimens of *Anteon* from Argentina and have found the new species described below.

## MATERIALS AND METHODS

The measurements reported are relative, except for the total length (head to abdominal tip, without the antennae), which is expressed in millimeters. The description uses the terminology of Olmi (1984, 1994, 1999), with the following additional abbreviations: POL is the distance between the inner edges of the 2 lateral ocelli; OL is the distance between the inner edges of a lateral ocellus and the median ocellus; OOL is the distance from the outer edge of a lateral ocellus to the compound eye; OPL is the distance from the posterior edge of a lateral ocellus to the occipital carina; TL is the distance from the posterior edge of an eye to the occipital carina.

The material studied in this paper is deposited in the Hymenoptera collection of Instituto de Zoología, Fundación Miguel Lillo (IMLA), San Miguel de Tucumán, Argentina.

*Anteon tucumanense* sp. nov. (Fig. 1)

Description. Holotype Female. Fully winged. Length 2.37 mm. Head black, except mandibles testaceous; antennae testaceous, except segments 7-10 darkened; mesosoma black, except anterior margin of pronotum testaceous-brown; gaster brown; legs testaceous. Antennae clavate; antennal segments in the following proportions: 12:5:5:4:4:5:5:5:5:7. Head granulated and with many irregular slight areolae; frontal line complete; occipital carina complete; POL = 7; OL = 4; OOL = 5; OPL = 4; TL = 5; greatest diameter of posterior ocelli: 1. Pronotum dull, granulated and crossed by numerous transverse keels; posterior surface of pronotum much shorter than scutum (4:15), broader than long; pronotal tubercles reaching the tegulae. Scutum dull, smooth, granulated. Notauli incomplete, reaching approximately 0.2× length of scutum. Scutellum and metanotum shiny, smooth, without sculpture. Propodeum reticulate rugose, with a strong transverse keel between dorsal and posterior surface; poste-

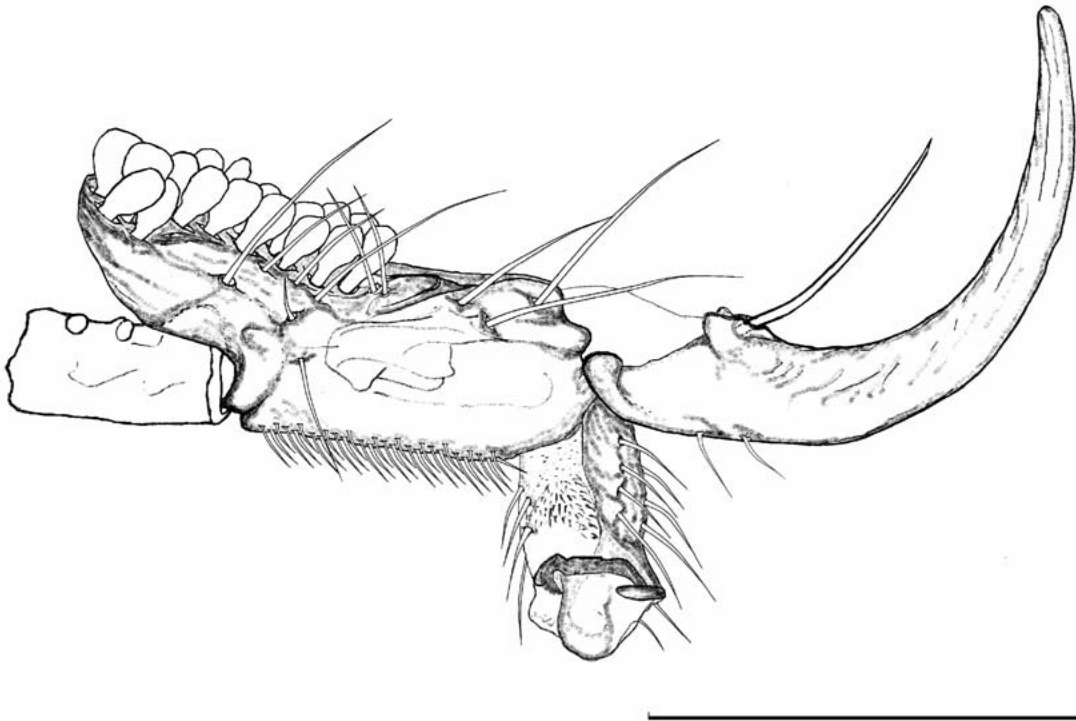


Fig. 1. *Anteon tucumanense*: chela of holotype (scale bar = 0.3 mm).

rior surface without longitudinal keels. Forewing hyaline, without dark transverse bands; distal part of stigmal vein much shorter than proximal part (2:6). Fore tarsal segments in the following proportions: 4:2:2:4.5:12. Segment 5 of fore tarsus (Fig. 1) with basal part slightly longer than distal part (7:5), 2 rows of 17 lamellae without interruption to the distal apex, and enlarged claw with a proximal prominence bearing a long bristle. Tibial spurs 1,1,2.

Male: Unknown.

Holotype: Female, Argentina, Tucumán Prov., San Miguel de Tucumán, 8.i.2007, E. Virla reared

ex *Xerophloea viridis* (Fabricius) (Hemiptera: Cicadellidae) (IMLA).

Etymology: The species is named *tucumanense* = inhabiting Tucumán.

Remarks. For the pronotum not crossed by a transverse raised carina (Fig. 34 in Olmi, 1998), *A. tucumanense* is similar to *A. molle* Olmi, 1984 and *A. parkeri* Olmi, 1998. The main difference among the above species concerns the shape of the chela. Following the description of *A. tucumanense*, the key to the females of Neotropica *Anteon* presented by Olmi (1998) can be modified by replacing couplet 14 as follows:

- 14 Segment 5 of fore tarsus with distal part large and straight (Fig. 1).....*tucumanense* **sp. nov.**
- Segment 5 of fore tarsus with distal part slender and curved (Fig. 311 in Olmi, 1984; fig. 37 in Olmi, 1998)..... 14'
- 14' Posterior surface of pronotum shorter than half of scutum.....*molle* Olmi
- Posterior surface of pronotum longer than half of scutum..... *parkeri* Olmi

ACKNOWLEDGMENTS

The research described in the present paper was supported by the scientific and technological co-operation between Italy and Argentina (IT-PA05-AYE/XV/040). The authors thank Dr. Susana Paradell (Facultad de Ciencias Naturales y Museo, Universidad Nacional de La Plata) for identification of the host of *Anteon tucumanense* **sp. nov.**

REFERENCES CITED

OGLOBLIN, A. A. 1938. Descripciones de Bethyilidae y Dryinidae de las colecciones del Museo Argentino de Ciencias Naturales. An. Mus. Argentino Cie. Nat. Bernardino Rivadavia, Buenos Aires 40: 35-50.

OLMI, M. 1984. A Revision of the Dryinidae (Hymenoptera). Mem. American Entomol. Inst. 37: xii + 1913 pp.

- OLMI, M. 1987. New species of Dryinidae (Hymenoptera, Chrysidoidea). *Fragmenta Entomol.* 19: 371-456.
- OLMI, M. 1991. Supplement to the revision of the world Dryinidae (Hymenoptera Chrysidoidea). *Frustula Entomol.* (1989), N.S. xii (xxv): 109-395.
- OLMI, M. 1992. New species of Dryinidae (Hymenoptera). *Acta Zool. Hungarica* 38: 281-292.
- OLMI, M. 1994. The Dryinidae and Embolemidae (Hymenoptera: Chrysidoidea) of Fennoscandia and Denmark. *Fauna Entomologica Scandinavica* 30. Brill, Leiden. 100 pp.
- OLMI, M. 1998. New Embolemidae and Dryinidae (Hymenoptera Chrysidoidea). *Frustula Entomol.* (1997), N. S. xx (xxxiii): 30-118.
- OLMI, M. 1999. Hymenoptera Dryinidae–Embolemidae. *Fauna d'Italia* 37. Edizioni Calderini, Bologna: xvi + 425 pp.
- OLMI, M., E. G. VIRLA, AND F. FERNANDEZ. 2000. Las Avispas Dryinidae de la Región Neotropical (Hymenoptera: Chrysidoidea). *Biota Colombiana* 1 (2): 141-163.
- OLMI, M., AND E. G. VIRLA. 2004. Description of two new species of Dryinidae (Hymenoptera: Chrysidoidea) from Argentina. *Zootaxa* 709: 1-7.
- VIRLA, E. G. 1998. New Neotropical species of Dryinidae (Hymenoptera: Chrysidoidea). *Frustula Entomol.* (1997), N.S. xx (xxxiii): 1-17.
- VIRLA, E. G., AND M. OLMI. 1998. The Dryinidae of Argentina (Hymenoptera - Chrysidoidea). *Acta Entomol. Chilena* 22: 19-35.