



Evidence for Male-Produced Aggregation Pheromone in *Sphenophorus incurrens* (Coleoptera: Curculionidae)

Authors: Illescas-Riquelme, Carlos Patricio, Llanderal-Cázares, Celina, Ruiz-Montiel, César, González-Hernández, Héctor, Alatorre-Rosas, Raquel, et al.

Source: Florida Entomologist, 99(3) : 522-527

Published By: Florida Entomological Society

URL: <https://doi.org/10.1653/024.099.0327>

BioOne Complete (complete.BioOne.org) is a full-text database of 200 subscribed and open-access titles in the biological, ecological, and environmental sciences published by nonprofit societies, associations, museums, institutions, and presses.

Your use of this PDF, the BioOne Complete website, and all posted and associated content indicates your acceptance of BioOne's Terms of Use, available at www.bioone.org/terms-of-use.

Usage of BioOne Complete content is strictly limited to personal, educational, and non - commercial use. Commercial inquiries or rights and permissions requests should be directed to the individual publisher as copyright holder.

BioOne sees sustainable scholarly publishing as an inherently collaborative enterprise connecting authors, nonprofit publishers, academic institutions, research libraries, and research funders in the common goal of maximizing access to critical research.

Evidence for male-produced aggregation pheromone in *Sphenophorus incurrens* (Coleoptera: Curculionidae)

Carlos Patricio Illescas-Riquelme¹, Celina Llanderal-Cázares¹, César Ruiz-Montiel², Héctor González-Hernández¹, Raquel Alatorre-Rosas¹, Leopoldo Cruz-López³, and Julio C. Rojas^{3,*}

Abstract

Sphenophorus incurrens Gyllenhal (Coleoptera: Curculionidae) is an insect that feeds mainly on plants of the family Poaceae in the Neotropics. In Mexico, this weevil is an emergent pest of sugarcane. In this study, first the behavioral responses of both sexes to conspecifics were evaluated in a Y-tube olfactometer. Second, the volatiles of *S. incurrens* were sampled by the dynamic headspace technique and analyzed by gas chromatography coupled with electroantennographic detection (GC-EAD). Third, the antennal-active compound was identified by gas chromatography coupled with mass spectrometry. Finally, the biological activity of the identified compound was evaluated in laboratory and field tests. Our results showed that males emitted a pheromone that attracts both sexes. The GC-EAD analysis of the male volatiles showed that one peak elicited antennal responses from male and female weevils. The compound was identified as 2-methyl-4-octanol. Laboratory and field tests showed that the identified compound is attractive to both sexes of this weevil species, confirming its pheromonal activity.

Key Words: sugarcane; weevil; pest; semiochemical

Resumen

Sphenophorus incurrens Gyllenhal (Coleoptera: Curculionidae) es un insecto que se alimenta principalmente de plantas de la familia Poaceae en el Neotrópico. En México, este picudo es una plaga emergente de la caña de azúcar. En este estudio, se evaluaron las primeras respuestas de comportamiento de ambos sexos a sus congéneres en un olfatómetro Y-tipo. En segundo lugar, se muestrearon los volátiles de *S. incurrens* por medio de la técnica de aeración dinámica y se analizaron por cromatografía de gases acoplada a detección electroantagráfica (CG-DEA). En tercer lugar, se identificó el compuesto antenal-activo por cromatografía de gases acoplada a espectrometría de masas (CG-EM). Por último, se evaluó la actividad biológica del compuesto identificado en pruebas de laboratorio y de campo. Nuestros resultados mostraron que los machos emiten una feromona que atrae a ambos sexos. El análisis CG-DEA de los volátiles de machos mostró que 1 pico elicó respuestas antenales de picudos de ambos sexos. Se identificó el compuesto como 2-metil-4-octanol. Las pruebas de laboratorio y de campo mostraron que el compuesto identificado es atractivo para ambos sexos de esta especie de picudo, lo que confirma su actividad feromonal.

Palabras Clave: caña de azúcar; picudo; plaga; semiquímico

Sphenophorus incurrens Gyllenhal (Coleoptera: Curculionidae) is an insect that feeds mainly on plants of the family Poaceae, such as sugarcane (*Saccharum* spp.), rice (*Oriza sativa* L.) and kikuyu grass (*Pennisetum clandestinum* Hochst. ex Chiov.) (van Zwaluwenburg 1926; Flores 1994; Ordaz-González et al. 2014). This weevil is of Neotropical origin and has been observed from Mexico to Panama (Vaurie 1951, 1954; Anderson 2002).

In the past, this weevil was considered a sugarcane pest of minor importance in Mexico because its population levels were low. The beetles mainly attacked old plantations, and damage was restricted to small areas (van Zwaluwenburg 1926; Flores 1994). Currently, however, *S. incurrens* has acquired relevance because its populations have increased to a level that is causing economic damage in several sugarcane-producing states of Mexico (Pérez-De La O et al. 2014; Ruiz-Montiel et al. 2015). The main damage by this insect is caused by its larvae, which feed on the plant rhizome producing galleries that allow

the entry of opportunistic pathogens that may cause plant death. So far, there is no effective control method for this insect pest; therefore, various control strategies would be worth exploring. One of these possibilities is the use of semiochemicals as a component of integrated pest management. A number of studies have reported the presence of pheromones and kairomones in several species of the subfamily Rhynchophorinae (Bartelt 1999; Piñero & Ruiz-Montiel 2012), to which *S. incurrens* belongs. These compounds may be used for monitoring pest populations or as a control method (e.g., mass trapping) (Wyatt 2014). There are some successful examples of the use of semiochemicals for monitoring, mass trapping, and mating disruption of weevil species (Dickerson et al. 1987; Chinchilla et al. 1996; Downham et al. 2001; Oehlschlager et al. 2002; Piñero et al. 2011).

In this study, we performed behavioral bioassays to determine whether this weevil species produces an aggregation pheromone (i.e., a semiochemical produced by a sex that attracts both sexes about

¹Instituto de Fitosanidad, Programa de Entomología y Acarología, Colegio de Postgraduados Campus Montecillo, 56239 Texcoco, Estado de México, México; E-mail: entoillescas@gmail.com (C. P. I.-R.), lllcelina@colpos.mx (C. L.-C.); hgzzhdz@colpos.mx (H. G.-H.); alatoros@colpos.mx (R. A.-R.), jrojas@ecosur.mx (J. C. R.)

²Instituto de Investigaciones Forestales, Universidad Veracruzana, Xalapa, Veracruz, México; E-mail: ruizmon@hotmail.com (C. R.-M)

³Grupo de Ecología de Artrópodos y Manejo de Plagas, El Colegio de la Frontera Sur, Unidad Tapachula, Tapachula Chiapas México. lcruz@ecosur.mx (L. C.-L.)

*Corresponding author; E-mail: jrojas@ecosur.mx (J. C. R.)

equally). Second, we sampled the volatiles of *S. incurrens* by dynamic headspace technique and analyzed them by coupled gas chromatography–electroantennographic detection (GC-EAD). Third, we identified the electrophysiologically active compound by coupled gas chromatography–mass spectrometry (GC-MS). Finally, we evaluated the biological activity of the identified compounds in an olfactometer and field tests.

Materials and Methods

BIOLOGICAL MATERIAL

Adult weevils of unknown age and mating status were collected in damaged sugarcane plantations in the locality of Potrero, municipality of Atoyac, State of Veracruz, Mexico. Insects were taken to the laboratory, where they were sexed and placed in plastic containers (30 × 20 × 20 cm). Pieces of fresh sugarcane (10 mo old), variety CP-72 2086, harvested from commercial plantations were used for feeding weevils and for bioassays. The insects were maintained at 25 ± 2 °C and 70 ± 10% RH.

BEHAVIORAL RESPONSES OF *S. INCURRENS* TO VOLATILES FROM CONSPECIFICS AND SUGARCANE

The responses of *S. incurrens* females and males to volatiles of conspecifics and sugarcane were evaluated in a glass Y-tube olfactometer following the method described by Ruiz-Montiel et al. (2003). The olfactometer (stem, 12 cm; arms, 12 cm at 45°; internal diameter, 2.5 cm) was placed in an air-conditioned room (22 ± 2 °C, 70 ± 10% RH, and illumination 3 lux). Airflow was 0.5 L/min through each arm; the air was purified by activated charcoal and humidified before passing over the target and entering the Y-tube. Each arm was attached to a flow meter and an odor source container (a glass container 4.5 cm in diameter and 15 cm tall). The upwind ends of the Y-tube arms were each connected to the odor source containers, one of which contained one of the treatments, and the other contained the other treatment. A weevil, a male or female, was placed into the olfactometer base tube and given 5 min to walk toward the end of one of the arms. Choice for an odor source was defined as a weevil crossing a line 7 cm upwind of the bifurcation of the Y-tube and remaining there for at least 20 s. If a weevil did not make a choice within 5 min, this was recorded as no response. After each trial, the olfactometer was washed and dried at 120 °C to avoid contamination. The position of odor chambers to each arm was reversed after each replication to eliminate potential bias due to odor source location. For each odor source pair, 40 weevils of each sex were tested. The following treatments were compared: 1) males + sugarcane vs. clean air, 2) females + sugarcane vs. clean air, 3) males + sugarcane vs. sugarcane, 4) females + sugarcane vs. sugarcane, and 5) males + sugarcane vs. females + sugarcane. In all treatments, 15 males or 15 females and/or 100 g sugarcane were used as odor sources. Rectangular pieces of unpeeled sugarcane were used.

HEADSPACE SAMPLING OF WEEVIL VOLATILES

Volatiles emitted by both sexes of *S. incurrens* were sampled using the dynamic headspace technique. Typically, 100 females + 100 g sugarcane, 100 males + 100 g sugarcane, or 100 g sugarcane were placed separately into cylindrical glass aeration chambers (12.5 cm long × 4.8 cm inner diameter). The pieces of unpeeled sugarcane were cut longitudinally. A charcoal-filtered air stream (1 L/min) was maintained through the glass aeration chambers for 120 h. Volatiles were collected into glass traps (40 mm long × 4 mm inner diameter) containing 50

mg Porapak Q adsorbent (Alltech Associates, Deerfield, Illinois). At the conclusion of each air entrapment, the volatiles were eluted from the adsorbent with 400 µL methylene chloride (Baker, HPLC grade), and extracts were concentrated with N₂ before analysis.

GAS CHROMATOGRAPHY–ELECTROANTENNOGRAPHIC DETECTION ANALYSIS (GC-EAD)

The GC-EAD analysis was performed to locate antennal-active components from Porapak Q extracts, using a Shimadzu GC-2010 plus gas chromatograph with a SPB-1 non-polar fused silica capillary column (30 m × 0.25 mm) (Supelco, Toluca, Mexico) programmed from 50 °C, maintained for 2 min, to 280 °C, at 15 °C/min. The EAD recording was made with an excised weevil antenna, and one antenna per weevil was used in each run. Both ends of the antenna were fixed between 2 EAG probes with electrically conductive gel (Spectra 360 electrode gel, Parker Laboratories, Fairfield, New Jersey). Antennal signals were recorded using GC-EAD software version 2.6 (Syntech, Kirchzarten, Germany). The extracts of females and males were tested on 5 antennae per sex.

CHEMICAL ANALYSIS

The Porapak Q extracts were analyzed with a Varian CP-3800 GC linked to a Varian Saturn 2200 mass spectrometer (Varian, Palo Alto, California). The capillary column and the temperature program were the same as those described for the GC-EAD analysis. The carrier gas was helium at a constant flow rate (1.0 mL/min). The injector port temperature was held at 200 °C. The antennal-active component was tentatively identified based on comparison with spectra from the NIST/EPA/NIH Mass Spectral Library (version 2.0, 2002). The identity of the compound was confirmed by comparing retention times and mass spectra of synthetic standards. The synthetic 2-methyl-4-octanol was prepared according to procedures reported elsewhere (Perez et al. 1997). This compound was identified as a component of the aggregation pheromone of *Metamasius hemipterus sericeus* (Oliver) (Perez et al. 1997). Purity of the compound was 95% based on capillary GC analysis using a flame ionization detector.

BEHAVIORAL RESPONSES OF *S. INCURRENS* TO THE ANTENNAL-ACTIVE COMPONENT

The biological activity of the identified compound was evaluated in the Y-tube olfactometer described above. Serial dilutions of the test compound were prepared in methylene chloride to make 1, 10, and 100 ng/µL solutions. A standard aliquot (1 µL) of the selected concentration was pipetted onto a piece of filter paper (Whatman No. 1, Whatman, Maidstone, England), exposed 20 s to air to allow solvent evaporation, and introduced into one of the odor chambers of the olfactometer. A piece of filter paper loaded with 1 µL of solvent (control) was introduced into the opposite odor chamber. Also, each odor chamber of the olfactometer contained 50 g unpeeled sugarcane. After both test and control had been introduced into the odor chambers, a weevil, male or female, was placed into the olfactometer base tube and given 5 min to walk toward the end of one of the arms as described above. The position of odor chambers to each arm was reversed after each replication to eliminate directional bias. All concentrations were replicated 40 times for each sex. The bioassays were performed under controlled conditions: 22 ± 2 °C, 70 ± 10% RH, and illumination 3 lux.

FIELD TRIAL

Field evaluation of the identified compound was performed in an area of 7,200 m² planted with sugarcane variety ITV 92-1424 in Potrero

Nuevo, municipality of Atoyac, State of Veracruz, Mexico. The experimental site was chosen because previous technical reports and samplings showed that *S. incurrens* has been causing damage to the sugarcane plantations located in this area.

The traps used for the experiment consisted of white plastic containers with a capacity of 5 L (22 cm high × 20 cm diameter). Four 4 cm holes were made in the container wall to allow the weevil to enter the trap. The holes were made at a height of 5 cm from the container lid and 11.5 cm apart. Once the bait was introduced into the traps, these were buried, leaving the holes free to allow entrance of weevils. Traps were filled with 1 L of soapy water (1%) to capture the weevils attracted to the bait.

The following treatments were evaluated: 1) 250 g sugarcane alone, 2) 250 g sugarcane + 18 *S. incurrens* males, 3) 250 g sugarcane + a pheromone lure, 4) a pheromone lure alone, and 5) an empty trap as a control. The sugarcane was cut into small 5 cm long pieces. The pheromone lure consisted of a membrane device (Squid, Biological and Pheromones, S. A. de C. V. Texcoco, Mexico) loaded with 350 mg 2-methyl-4-octanol. According to the seller, this device releases about 1 mg per day. The membrane device was hung from a wire tied to two 0.5 cm holes at the center of the container lid. The sugarcane and males were placed in a plastic container (13 cm high × 11 cm diameter) with several holes in the lid to allow odor to disperse. The container was then placed inside the trap. The treatments were arranged in a complete random design with 4 replicates. The distance between traps was about 30 m. The experiment lasted 19 d, from 29 Apr to 17 May 2015. Traps were checked every other day, resulting in 9 observational dates, and the captured weevils were removed at each observational date. Sugarcane and weevils were changed 9 d after starting the experiment. The captured weevils were kept in plastic containers and transported to the laboratory to be sexed.

STATISTICAL ANALYSES

The behavioral responses of *S. incurrens* to conspecific volatiles and the identified compound were analyzed by a G-test with Williams' correction for sample size (Sokal & Rohlf 1995). Trap captures were analyzed by a 1-way analysis of variance (ANOVA), and means were separated by Tukey's test ($\alpha = 0.05$). Before analysis, normality and homogeneity of variance were checked. A chi-squared test was used to analyze if there was a significant difference in the number of females and males captured by traps. Field data were analyzed with the statistical software SAS, version 9.0 (SAS Institute 2001).

Results

BEHAVIORAL RESPONSES OF *S. INCURRENS* TO CONSPECIFIC AND SUGARCANE VOLATILES

Both sexes of *S. incurrens* significantly preferred the volatiles emitted by conspecific weevils + sugarcane when compared with clean air. In the same way, both sexes were more attracted to volatiles released by conspecific males + sugarcane than to sugarcane alone. However, neither sex showed any preference for volatiles from conspecific females + sugarcane or for sugarcane alone. Males were not more attracted to volatiles from males + sugarcane than to volatiles from females + sugarcane. In contrast, females preferred the volatiles from conspecific males + sugarcane over volatiles from conspecific females + sugarcane (Table 1).

GAS CHROMATOGRAPHY-ELECTROANTENNOGRAPHIC DETECTION AND GAS CHROMATOGRAPHY-MASS SPECTROMETRY ANALYSES

The GC-EAD analysis of Porapak Q extracts from *S. incurrens* males and females showed 1 male-specific compound that elicited antennal response in both sexes (Fig. 1A). The antennal-active component was identified by GC-MS as 2-methyl-4-octanol [GC-EI-MS m-z 126 (M^+ -18, 1%), 111 (1), 87 (38), 69 (100), 57 (14), 43 (53)] (mass spectrum match with 2-methyl-4-octanol). When 10 ng of synthetic 2-methyl-4-octanol was subjected to GC-EAD analysis, repeatable EAD responses were elicited by this compound (Fig. 1 B).

BEHAVIORAL RESPONSES OF *S. INCURRENS* TO THE ANTENNAL-ACTIVE COMPONENT

Neither sex showed preference for the synthetic 2-methyl-4-octanol or solvent at the concentration of 1 ng/ μ L. At the concentration of 10 ng/ μ L, females, but not males, were attracted to the synthetic compound, relative to the solvent control. Both sexes were attracted to 2-methyl-4-octanol compared with the solvent at the concentration of 100 ng/ μ L. When the attractiveness of 2-methyl-4-octanol + sugarcane was compared against sugarcane, males, but not females, preferred the synthetic compound over the control at the concentration of 10 ng/ μ L. At the highest concentration evaluated, females, but not males, were attracted to 2-methyl-4-octanol + sugarcane compared with sugarcane alone (Table 2).

Table 1. Behavioral responses of both sexes of *Sphenophorus incurrens* to volatiles from conspecifics and sugarcane in a Y-tube olfactometer.

Treatment (source 1 vs. source 2)	Sex	Response to source 1 vs. source 2	NR	P value
Males + sugarcane vs. clean air	Male	32 vs. 8	3	<0.001
	Female	29 vs. 11	6	<0.01
Females + sugarcane vs. clean air	Male	34 vs. 6	5	<0.001
	Female	30 vs. 10	4	<0.01
Males + sugarcane vs. sugarcane	Male	28 vs. 12	9	<0.05
	Female	27 vs. 13	9	<0.05
Females + sugarcane vs. sugarcane	Male	25 vs. 15	12	0.114
	Female	17 vs. 23	7	0.344
Males + sugarcane vs. females + sugarcane	Male	23 vs. 17	14	0.344
	Female	28 vs. 12	11	<0.05

Data were analyzed by a G-test with Williams' correction for sample size. NR, no response.

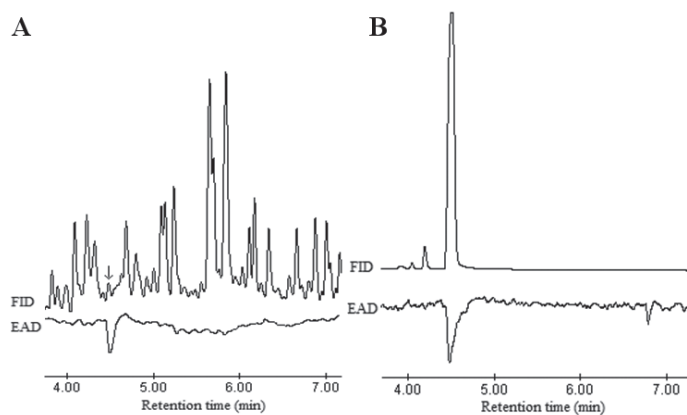


Fig. 1. Simultaneous responses measured by flame ionization detection (FID) and electroantennographic detection (EAD) in the antennae of *Sphenophorus incurrens* males to headspace volatiles collected from (A) conspecific males and (B) 10 ng synthetic 2-methyl-4-octanol, on a SPB-1 capillary column.

FIELD TRIAL

The number of weevils captured ($n = 106$) was affected by treatment ($F = 18.15$, $df = 32$, $P < 0.001$). Traps baited with pheromone lure + sugarcane caught more weevils than any other trap (Fig. 2). There was no difference in the numbers of weevils captured among traps baited with sugarcane alone, sugarcane + males, and pheromone lure alone. The female-to-male sex ratio of weevils captured ranged between 1 in traps baited with sugarcane alone ($\chi^2 = 0.04$, $df = 1$, $P > 0.05$) and sugarcane + pheromone lure ($\chi^2 = 0.07$, $df = 1$, $P > 0.05$) to 0.54 in traps baited with sugarcane + males ($\chi^2 = 1.81$, $df = 1$, $P > 0.05$) and 0.60 in pheromone lure alone ($\chi^2 = 0.82$, $df = 1$, $P > 0.05$).

Discussion

In this study, we found evidence that *S. incurrens* males produce a pheromone that attracts conspecific females and males in a Y-tube olfactometer. We were able to identify the compound released by *S. incurrens* males, and the function of this compound as an aggregation pheromone was confirmed in the laboratory and field tests. The presence of an aggregation pheromone released by males has been

reported in at least 17 species of Rhynchophorinae (Ambrogi et al. 2009). For instance, *Rhynchophorus palmarum* L. males were highly attracted to conspecific females and males in a 2-choice pitfall olfactometer, whereas females were not (Rochat et al. 1991). Also, field experiments showed that traps baited with males + palm stem caught more conspecific weevils than those baited with palm stem alone (Rochat et al. 1991).

The GC-EAD analyses of male extracts showed that only 1 compound elicited response from female and male antennae. The finding that *S. incurrens* males produced only 1 pheromone compound agrees with findings in other Rhynchophorinae, including *Dynamis borassi* (F.), *Sphenophorus levis* Vaurie, *Sitophilus zeamais* Motschulsky, *Sitophilus oryzae* (L.), and 4 species of *Rhynchophorus* (Ambrogi et al. 2009). In contrast, in another 9 species of this subfamily, the pheromone blend is composed of at least 2 compounds (Bartelt 1999; Ambrogi et al. 2009). For example, 3 compounds constitute the pheromone of the Australian population of the New Guinea sugarcane weevil, *Rhabdoscelus obscurus* Boisduval. Remarkably, the Hawaiian population of this species produced only 1 of the 3 compounds as its pheromone (Giblin-Davis et al. 2000). *Scyphophorus acupunctatus* Gyllenhal males release 4 attractive compounds (Ruiz-Montiel et al. 2008). However, the major pheromone component is sufficient to get captures comparable with those obtained with the quaternary blend (Rodríguez-Rebollar et al. 2012).

Our results showed that 2-methyl-4-octanol was the compound that elicited antennal response from *S. incurrens* females and males. This compound has been identified as part of the pheromone blend of *Metamasius hemipterus* (L.) (Ramirez-Lucas et al. 1996; Perez et al. 1997), the Australian population of *R. obscurus* (Giblin-Davis et al. 2000), and *S. acupunctatus* (Ruiz-Montiel et al. 2008). In contrast, this alcohol alone functions as an aggregation pheromone for the Hawaiian population of *R. obscurus* (Giblin-Davis et al. 2000) and for *S. levis* (Zarbin et al. 2003). Interestingly, the 2 species of *Sphenophorus* have been found to use 2-methyl-4-octanol as their pheromone (Zarbin et al. 2003). As this alcohol is chiral, it is possible that the species use different enantiomers. However, in the case of *S. incurrens*, it would be necessary to determine the absolute configuration of the released compound. Zarbin et al. (2003) characterized the compound naturally released by *S. levis* as (S)-(+)-2-methyl-4-octanol. Although both weevil species use the same host plant species, they are geographically separated; therefore, there is no risk of cross-attraction between them. It would be interesting to identify the pheromone of other species of *Sphenophorus* to determine the diversity of pheromone compounds

Table 2. Behavioral responses of both sexes of *Sphenophorus incurrens* to different concentrations of synthetic 2-methyl-4-octanol in a Y-tube olfactometer.

Treatment (source 1 vs. source 2)	Sex	Response to source 1 vs. source 2	NR	P value
1 ng/μL vs. solvent	Male	24 vs. 16	7	0.207
	Female	18 vs. 22	13	0.529
10 ng/μL vs. solvent	Male	15 vs. 25	12	0.114
	Female	31 vs. 9	10	<0.001
100ng/μL vs. solvent	Male	29 vs. 11	4	<0.01
	Female	27 vs. 13	6	<0.05
1 ng/μL + sugarcane vs. solvent + sugarcane	Male	17 vs. 23	7	0.344
	Female	16 vs. 24	4	0.207
10 ng/μL + sugarcane vs. solvent + sugarcane	Male	29 vs. 11	5	<0.01
	Female	18 vs. 22	13	0.529
100 ng/μL + sugarcane vs. solvent + sugarcane	Male	26 vs. 14	12	0.057
	Female	30 vs. 10	8	<0.01

Data were analyzed by a G-test with Williams' correction for sample size. NR, no response.

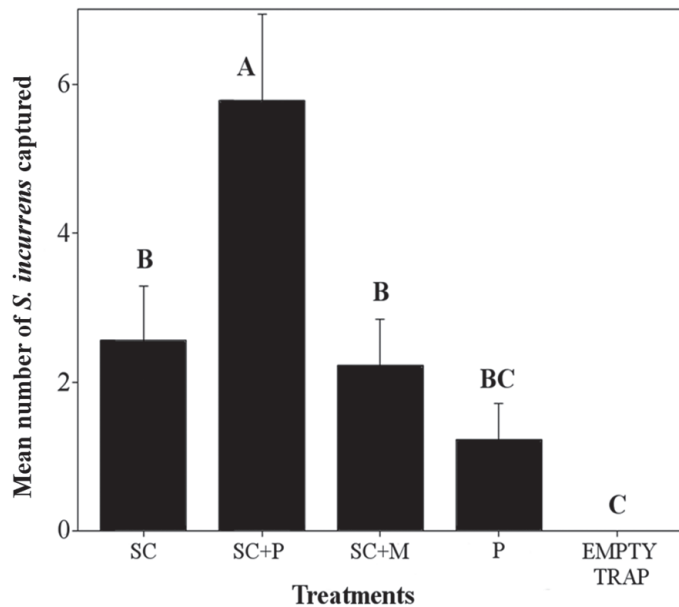


Fig. 2. Mean (+ SE; $N = 9$) number of *Sphenophorus incurrens* weevils caught in traps baited with the different treatments. SC, Sugarcane; SC+P, sugarcane + pheromone; SC+M, sugarcane + males; P, pheromone. Columns with the same letter are not significantly different ($\alpha = 0.05$; Tukey's test).

used for this group of weevils and how they differ from other related genera. Generally, methyl branched ketones and alcohols are used as pheromone components by weevils of the subfamily Rhynchophorinae, with the exception of *Cosmopolites sordidus* (Germar), which uses a bicyclic ketal as pheromone (Beauhaire et al. 1995). In this way, it is possible that the alcohol/ketone pheromone motif is highly conserved within the subfamily, but more species need to be studied to confirm this idea.

The evaluation of the synthetic pheromone in the laboratory showed sexually dimorphic responses of *S. incurrens*. We observed that females were attracted to the concentration of 10 ng/ μ L whereas males responded to the concentration of 100 ng/ μ L when the pheromone was evaluated alone. This observation suggests that females are more sensitive to the pheromone than males. Other studies showed that the attraction of female and male beetles may be affected by the quantity of the aggregation pheromone (Walgenbach & Burkholder 1986; Schlyter et al. 1987). For instance, *S. zeamais* females were attracted to synthetic pheromone from 1 ng to 1 μ g whereas males had a slightly higher threshold, from 10 ng to 10 μ g (Walgenbach & Burkholder 1986). However, in the case of *S. incurrens*, this pattern of response was inverted when the host volatiles were added to the pheromone; males responded to the concentration of 10 ng/ μ L, and females were attracted to the concentration of 100 ng/ μ L. A number of studies showed that host plants can influence the attraction of insects to their pheromones (Landolt & Phillips 1997; Reddy & Guerrero 2004; Dickens 2006; Liu et al. 2013). For example, more *Dendroctonus valens* LeConte females than males were attracted to 3-carene when this host volatile was evaluated alone. However, when the pheromone, frontalin, was added to 3-carene, a male-biased attraction was observed (Liu et al. 2013). The sexually dimorphic responses of *S. incurrens* suggest that the pheromone may have a dual function, functioning as sex attractant and aggregation pheromone, but future studies will clarify the role of this compound in the chemical ecology of this weevil species.

In the field trial, we found that the best treatment for capturing weevils was the combination of pheromone lure and sugarcane, even better than the treatment containing males and sugarcane. One pos-

sible explanation for the higher capture rates by the synthetic pheromone and sugarcane over the males and sugarcane maybe because the first treatment released a larger quantity of pheromone. Whereas male weevils emit the pheromone in nanograms, the baits released the synthetic pheromone in milligrams. The finding that the pheromone lure alone was less attractive than when sugarcane was added is not surprising because it is well documented with other species that food volatiles synergize the response of weevils to their aggregation pheromone (Giblin-Davis et al. 1996; Reddy et al. 2005; Tinzaara et al. 2007). For example, the addition of fermented banana tissue to pheromone traps increased captures of *C. sordidus* weevils by 50% compared with pheromone alone (Tinzaara et al. 2007). Traps baited with the combination of synthetic pheromone and food attractants caught more *R. obscurus* individuals than those baited with synthetic pheromone or food attractants (Muniappan et al. 2004; Reddy et al. 2005).

Two aspects may facilitate the use of the pheromone for monitoring or mass trapping *S. incurrens*. First, the results of the field trial suggest that this species is attracted to the racemic blend of the pheromone, as are other species of Rhynchophorinae. It has been shown that non-naturally occurring enantiomers or stereoisomers in synthetic pheromones are behaviorally benign, thus allowing the use of racemic blends for monitoring or mass trapping weevils (Giblin-Davis et al. 1996; Reddy et al. 2005; Ruiz-Montiel et al. 2008). The second aspect is that the *S. incurrens* pheromone is composed of a single component instead of a blend of compounds, eliminating the necessity of additional experiments to determine the effects of various component ratios. However, several aspects related to the lure (e.g., release rate and longevity) and trap design need to be optimized before the pheromone identified here may be used in any operational program to monitor or control *S. incurrens*.

In this study, we found that *S. incurrens* males release an aggregation pheromone. Additionally, we identified the pheromonal component that was active in laboratory and field tests. Future studies will concentrate on optimizing the lure and identifying the food volatiles that synergize the response of weevils to this pheromone.

Acknowledgments

We thank Antonio Santiesteban (ECOSUR) for laboratory assistance, the staff, especially Arturo Martinez, at Fideicomiso Ingenio El Potrero S.A. de C.V. for facilities and assistance in the field experiment, and Squid, Biological and Pheromones S. A. de C. V. for providing pheromone lures and traps used in this study. This work was supported by CONACYT through a graduate scholarship to C. P. I. R.

References Cited

- Ambrogi BG, Vidal DM, Zarbin PHG. 2009. Feromônios de agregação em Curculionidae (Insecta: Coleoptera) e sua implicação taxonômica. *Química Nova* 32: 2151–2158.
- Anderson RS. 2002. The Dryophthoridae of Costa Rica and Panamá: checklist with keys, new synonymy and descriptions of new species of *Cactophagus*, *Mesocordylus*, *Metamasius* and *Rhodobaenus* (Coleoptera; Curculionidae). *Zootaxa* 80: 1–94.
- Bartelt RJ. 1999. Weevils, pp. 91–112 In Hardie J, Minks AK [eds.], *Pheromones of Non-Lepidoptera Insects Associated with Agricultural Plants*. CAB International, London, United Kingdom.
- Beauhaire J, Ducrot PH, Malosse C, Rochat D. 1995. Identification and synthesis of sordidin, a male pheromone emitted by *Cosmopolites sordidus*. *Tetrahedron Letters* 36: 1043–1046.
- Chinchilla C, Oeshlschlager C, Bulgarelli J. 1996. A pheromone based trapping system for *Rhynchophorus palmarum* and *Metamasius hemipterus*. *ASD Oil Palm Paper (Costa Rica)* 12: 11–17.

- Dickens JC. 2006. Plant volatiles moderate response to aggregation pheromone in Colorado potato beetle. *Journal of Applied Entomology* 130: 26–31.
- Dickerson WA, Ridgeway RL, Planner FR. 1987. Southeastern boll weevil eradication program, improved pheromone trap, and program status, pp. 335–337 *In* Proceedings, Beltwide Cotton Research and Production Conference, 24–27 Jun 1987, Dallas, Texas. National Cotton Council, Memphis, Tennessee.
- Downham MCA, Smith NEJM, Laboke PO, Hall DR, Odongo B. 2001. Reduction of pre-harvest infestations of African sweetpotato weevils *Cylas brunneus* and *C. puncticollis* (Coleoptera: Apionidae) using a pheromone mating-disruption technique. *Crop Protection* 20: 163–166.
- Flores S. 1994. Las Plagas de la Caña de Azúcar en México. Servicios Gráficos Orel, Córdoba, Veracruz, México.
- Giblin-Davis RM, Oehlschlager AC, Perez A, Gries G, Gries R, Weissling T, Chinchilla CM, Pena JE, Hallett RH, Pierce HD, Gonzalez LM. 1996. Chemical and behavioral ecology of palm weevils (Curculionidae: Rhynchophorinae). *Florida Entomologist* 79: 153–167
- Giblin-Davis RM, Gries R, Crespi B, Robertson LN, Hara AH, Gries G, O'Brien CW, Pierce HD. 2000. Aggregation pheromones of two geographical isolates of the New Guinea sugarcane weevil, *Rhabdoscelus obscurus*. *Journal of Chemical Ecology* 26: 2763–2780.
- Landolt PJ, Phillips TW. 1997. Host plant influences on sex pheromone behavior of phytophagous insects. *American Entomologist* 43: 12–22.
- Liu Z, Xu B, Miao Z, Sun J. 2013. The pheromone frontalin and its dual function in the invasive bark beetle *Dendroctonus valens*. *Chemical Senses* 38: 485–495.
- Muniappan R, Bamba J, Cruz J, Reddy GVP. 2004. Field response of Guam population of the New Guinea sugarcane weevil, *Rhabdoscelus obscurus* (Boisduval) (Coleoptera: Curculionidae), to aggregation pheromones and food volatiles. *Micronesia* 37: 57–68.
- Oehlschlager AC, Chinchilla C, Castillo G, González L. 2002. Control of red ring disease by mass trapping of *Rhynchophorus palmarum* (Coleoptera: Curculionidae). *Florida Entomologist* 85: 507–513.
- Ordaz-González EL, Equihua-Martínez A, León-García I, Jones RW, Aragón A, Hernández R, Vergara-Pineda S. 2014. Species of *Sphenophorus* (Coleoptera: Dryophthoridae) associated with golf courses in Mexico. *Florida Entomologist* 97: 857–860.
- Perez AL, Campos Y, Chinchilla CM, Oehlschlager AC, Gries G, Gries R, Gablin-Davis RM, Castrillo G, Peña JE, Duncan RE, Gonzalez LM, Pierce HD, McDonald R, Andrade R. 1997. Aggregation pheromones and host kairomones of West Indian sugarcane weevil, *Metamasius hemipterus sericeus*. *Journal of Chemical Ecology* 23: 869–888.
- Pérez-De La O NB, López-Martínez V, Jiménez-García D, Jones RW. 2014. Determination of spatial distribution of *Sphenophorus incurrens* (Coleoptera: Curculionidae) using GIS in Morelos, Mexico. *Florida Entomologist* 97: 285–287.
- Piñero JC, Ruiz-Montiel C. 2012. Ecología química y manejo de picudos (Coleoptera: Curculionidae) de importancia económica, pp. 361–400 *In* Rojas JC, Malo EA [eds.], *Temas Selectos de Ecología Química de Insectos*. El Colegio de la Frontera del Sur, Mexico.
- Piñero JC, Angello AM, Tuttle A, Leskey TC, Faubert H, Koehler G, Los L, Morin G, Leahy K, Cooley DR, Prokopy RJ. 2011. Effectiveness of odor-baited trap trees for plum curculio (Coleoptera: Curculionidae) monitoring in commercial apple orchards in the northeast. *Journal of Economic Entomology* 104: 1613–1621.
- Ramirez-Lucas P, Malosse C, Ducrot PH, Lattere M, Zagatti P. 1996. Chemical identification, electrophysiological and behavioral activities of the pheromone of *Metamasius hemipterus* (Coleoptera: Curculionidae). *Bioorganic Medicinal Chemistry* 4: 323–330.
- Reddy GVP, Guerrero P. 2004. Interactions of insect pheromones and plant semiochemicals. *Trends of Plant Science* 9: 253–261.
- Reddy GVP, Cruz ZT, Bamba J, Muniappan R. 2005. Development of semiochemical-based trapping method for the New Guinea sugarcane weevil, *Rhabdoscelus obscurus* in Guam. *Journal of Applied Entomology* 129: 65–69.
- Rochat D, Gonzalez A, Marian D, Villanueva A, Sagatti P. 1991. Evidence for male-produced aggregation pheromone in *Rhynchophorus palmarum*. *Journal of Chemical Ecology* 17: 1221–1230.
- Rodríguez-Rebollar H, Rojas JC, González-Hernández H, Ortega-Arenas LD, Equihua-Martínez A, del Real-Laborde JC, López-Collado J. 2012. Evaluación de un cebo feromonal para la captura del picudo del agave (Coleoptera: Curculionidae). *Acta Zoologica Mexicana* (n. s.) 28: 73–85.
- Ruiz-Montiel C, González-Hernández H, Leyva J, Llanderal-Cázares C, Cruz-López L, Rojas JC. 2003. Evidence for a male-produced aggregation pheromone in *Scyphophorus acupunctatus* Gyllenhal (Coleoptera: Curculionidae). *Journal of Economic Entomology* 94: 1126–1131.
- Ruiz-Montiel C, García-Coapio G, Rojas JC, Malo EA, Cruz-López L, del Real I, González-Hernández H. 2008. Aggregation pheromone of the agave weevil, *Scyphophorus acupunctatus*. *Entomologia Experimentalis et Applicata* 127: 207–217.
- Ruiz-Montiel C, Illescas-Riquelme CP, Altamirano-Hernández U, Jones RW. 2015. Nuevos registros de picudos (Coleoptera: Curculionidae) afectando caña de azúcar (*Saccharum officinarum* L.) en Veracruz, México. *Southwestern Entomologist* 40: 427–432.
- SAS Institute. 2001. PROC User's Manual, 6th ed. SAS Institute, Cary, North Carolina.
- Schlyter F, Byers JA, Löfqvist J. 1987. Attraction to pheromone sources of different quantity, quality, and spacing: density-regulation mechanisms in bark beetle *Ips typographus*. *Journal of Chemical Ecology* 13: 1503–1523.
- Sokal RR, Rohlf FJ. 1995. *Biometry, the Principles and Practice of Statistics in Biological Research*. W. H. Freeman and Company, New York, New York.
- Tinzaara W, Gold CS, Dicke M, Van Huis A, Ragama PE. 2007. Host plant odours enhance the response of adult banana weevil to the synthetic aggregation pheromone Cosmolure+. *International Journal of Pest Management* 53: 127–137.
- Van Zwaluwenburg RH. 1926. Insect enemies of sugarcane in western Mexico. *Journal of Economical Entomology* 19: 664–669.
- Vaurie P. 1951. Revision of the genus *Calendra* (formerly *Sphenophorus*) in the United States and Mexico (Coleoptera: Curculionidae). *Bulletin of the American Museum of Natural History* 98: 29–186.
- Vaurie P. 1954. New species of *Calendra* from Mexico, with notes on others (Coleoptera: Curculionidae). *American Museum Novitates*, 8 p.
- Walgenbach CA, Burkholder WE. 1986. Factors affecting the response of the maize weevil, *Sitophilus zeamais* (Coleoptera: Curculionidae) to its aggregation pheromone. *Environmental Entomology* 15: 733–738.
- Wyatt TD. 2014. *Pheromones and Animal Behavior: Chemical Signals and Signature Mixes*. Second Edition. Cambridge University Press, Cambridge, United Kingdom.
- Zarbin PHG, Arrigoni EB, Reckziegel A, Moreira JA, Baraldi PT, Vieira PC. 2003. Identification of male-specific chiral compound from sugarcane weevil *Sphenophorus levis*. *Journal of Chemical Ecology* 29: 377–386.