



## **Embryonic development of pleuropodia of the cicada, *Magicicada cassini***

Authors: Strauß, Johannes, and Lakes-Harlan, Reinhard

Source: Journal of Insect Science, 6(27) : 1-6

Published By: Entomological Society of America

URL: [https://doi.org/10.1673/2006\\_06\\_27.1](https://doi.org/10.1673/2006_06_27.1)

---

BioOne Complete ([complete.BioOne.org](https://complete.BioOne.org)) is a full-text database of 200 subscribed and open-access titles in the biological, ecological, and environmental sciences published by nonprofit societies, associations, museums, institutions, and presses.

Your use of this PDF, the BioOne Complete website, and all posted and associated content indicates your acceptance of BioOne's Terms of Use, available at [www.bioone.org/terms-of-use](https://www.bioone.org/terms-of-use).

Usage of BioOne Complete content is strictly limited to personal, educational, and non - commercial use. Commercial inquiries or rights and permissions requests should be directed to the individual publisher as copyright holder.

---

BioOne sees sustainable scholarly publishing as an inherently collaborative enterprise connecting authors, nonprofit publishers, academic institutions, research libraries, and research funders in the common goal of maximizing access to critical research.



## Embryonic development of pleuropodia of the cicada, *Magicicada cassini*

Johannes Strauß and Reinhard Lakes-Harlan\*

Justus-Liebig Universität Gießen, Institute for Animal Physiology, Integrative Sensory Physiology, Wartweg 95, D – 35392 Gießen, Germany

### Abstract

In many insects the first abdominal segment possesses embryonic appendages called pleuropodia. Here we show the embryogenesis of pleuropodial cells of the periodical cicada, *Magicicada cassini* (Fisher 1851) (Insecta, Homoptera, Cicadidae). An antibody, anti-horseradish peroxidase (HRP), that is usually neuron-specific strongly marked the pleuropodial anlagen and revealed their ectodermal origin shortly after limb bud formation. Thereafter the cells sank into the epidermis and their apical parts enlarged. A globular part protruded from the body wall. Filamentous structures were marked at the stem region and into the apical dilation. In later embryonic stages the pleuropodia degenerated. Despite the binding of anti-HRP the cells had no morphological neuronal characters and cannot be regarded as neurons. The binding indicates that glycosylated cell surface molecules contribute to the adhesion between the presumably glandular pleuropodial cells. In comparison, anti-HRP does not mark the pleuropodia of Orthoptera.

Keywords: immunohistochemistry, cell surface molecules, horseradish peroxidase

Correspondence: \*Reinhard.Lakes-Harlan@physzool.bio.uni-giessen.de, Johannes.Strauss@physzool.bio.uni-giessen.de

Received: 19.12.2005 | Accepted: 29.3.2006 | Published: 18.10.2006

Copyright: Creative Commons Attribution 2.5 (<http://creativecommons.org/licenses/by/2.5>)

ISSN: 1536-2442 | Volume 2006, Number 27

Cite this paper as:

Strauß J, Lakes-Harlan R. 2006. Embryonic development of pleuropodia of the cicada, *Magicicada cassini*. 6pp. *Journal of Insect Science* 6:27, available online: [insectscience.org/6.27](http://insectscience.org/6.27)

## Introduction

Cicada embryos possess transiently ventral appendages at the first abdominal segment, the so-called “pleuropodia”. Those pleuropodia have been proposed to be homologous to abdominal legs (Wheeler 1890; Lewis et al. 2000). In accordance with this hypothesis, in many insects a variety of developmental genes involved in patterning the leg anlagen are expressed in both, the thoracic appendages as well as the pleuropodia (Lewis et al. 2000; Yamamoto et al. 2004). However, the pleuropodia are only transient as they degenerate at the end of embryonic development and have no leg-like locomotory function. At least in some insect taxa, the pleuropodia have secretory function (Slifer 1937, 1938; Sander et al. 1985). Ultrastructural studies confirm their glandular structure (Louvét 1973; Rost et al. 2004). It has been proposed that pleuropodial secretions weaken the chorion (Rost et al. 2004) or that they secrete a hatching enzyme (Slifer 1938; Engelmann 1957; Louvét 1973). In accordance with the glandular function, indications for the production of the molting enzyme in pleuropodia have accumulated from mechanical evidence in Blattaria (Engelmann 1957) and experimental evidence in Orthoptera (Jones 1956; Novák & Zambre 1974). But the pleuropodia of insects show a large morphological variability and probably diversity in function as well (Sander et al. 1985), even within one taxon as in the Blattaria (Stay 1977; Lambiase et al. 2003), where an osmoregulatory function is most likely (Stay 1977). The pleuropodia of cicadas are anatomically characterized as invaginated (their cell nuclei are located below the epidermis) glandular structures (Wheeler 1889a, b; Heymons 1899). They seem to develop during early organogenesis and differentiate before dorsal closure of the embryo. However, a developmental timing and further functional or histochemical details are unknown.

We analysed immunohistochemically the embryonic development and the formation of the pleuropodia of *Magicicada cassini* (Fisher 1851) (Insecta, Homoptera, Cicadidae), a periodical cicada. A developmental series was established that covered the phases of leg formation and dorsal closure. Anti-horseradish peroxidase (HRP), which recognizes glycolysated cell surface molecules on all insects neurons (Jan & Jan 1982; Snow et al. 1987; Haase et al. 2001), was used to follow the development of pleuropodia of *M. cassini* with respect to the 3-dimensional structure. The

immunohistochemical binding by anti-HRP is the first reported for pleuropodia.

## Materials and Methods

Immunohistochemical staining was carried out on embryos of *M. cassini*, which were collected from brood X in summer 2004 in Ohio (United States). Tree branches with freshly laid eggs were cut on June, 26<sup>th</sup> and stored in plastic containers supplied with tap water to provide humidity. The branches were kept for several weeks at room temperature (22°C). Embryos were dissected from the eggs laid beneath the bark.

As the precise duration of *M. cassini* embryogenesis is not known (about 52–56 days in the field with unknown temperature regime; Lloyd & Dybas 1966), embryos were dissected consecutively over a period of three weeks in order to cover various stages of embryogenesis, especially from limb bud formation to the end of katatrepsis and the beginning dorsal closure. From these preparations, a developmental series was established that covered the phases of leg formation. Because rearing of embryos could not take place in defined and standardised conditions, the embryos were matched to the developmental stages described for the orthopteran *Schistocerca nitens*, where these developmental periods correspond to stages from about 30% to 65% of total developmental time (Bentley et al. 1979). The developmental stages of *M. cassini* were aligned to those of *S. nitens* by similarities in morphological criteria, mainly position in the egg, relative length, structure of leg anlagen and general morphology, which provided the progress of pleuropodia development without specification of the precise developmental age of the embryos.

For immunohistochemistry, the embryos were fixed in 4% paraformaldehyde in phosphate buffer for one hour. After repeated washing in phosphate buffer they were incubated with the HRP antibody (Cappel Immunocytochemicals, Cochranville, PA) at a concentration of 1: 800 overnight at 4°C. For visualisation of antibody binding, embryos were incubated with a secondary antibody coupled with the chromophore Cy3 (Sigma-Aldrich, www.sigmaaldrich.com) at a concentration of 1:300 for two hours. Control preparations were incubated with only the first or the second antibody. Embryo preparations were then dehydrated in an ethanol series, cleared in methyl salicylate (Merck Inc., www.merck.com) and embedded in Entellan

medium (Merck). The preparations were examined using a Leitz Dialux 20 fluorescence microscope. Photographs were taken using a digital camera system (Intas GmbH, www.intas.de; 768x1024 pixel) and digitally revised in Adobe Photoshop, by enhancing contrast and inserting scale bars. Some preparations were optically sectioned with a confocal microscope (Leica, www.leica-microsystems.com, TCS SP2).

## Results

The first documented embryonic stage of *M. cassini* corresponds to 30–35% of embryonic development of *S. nitens* (Figure 1A; Bentley et al. 1979). The embryo is dorsally open and short limb buds are present without a clearly visible segmentation. During this stage a pleuropodium is not visible from the outside, but the immunostaining revealed a first anti-HRP signal at the ventro-lateral margin of the first abdominal segment (Figure 1B). This situation represents the earliest antibody binding to pleuropodia and is likely to correspond to a very early stage of pleuropodium development. The immunostaining is bilateral symmetrical and restricted to the first abdominal segment (Fig. 1C). Only the apical surfaces of six to eight cells were immunoreactive. Shortly thereafter anti-HRP binding extended throughout the whole epidermis, still labelling the apical part of the about cells most strongly (Figure 1D). At about 40% of embryonic development, the cells elongate and sink into the body cavity (Figure 1E). Their nuclei are located at the basal part within the body cavity. By about 45% of development the apical parts evaginate above the epidermis (Figs. 1F,G). Consequently, the pleuropodium is morphologically separated into a basal crescent, a narrow pedunculus extending through the epidermis and an external dome. This separation becomes even more obvious at around 50% of development. This stage is characterized by an extension of the hind legs to the anterior margin of the third abdominal segment and the beginning of the dorsal closure. The dorsal view shows that anti-HRP binding is still strongest in the apical, globular dome that protrudes from the body wall (Figures 1G-I). Confocal microscopy demonstrates the strong polarity of the pleuropodial cells and the restriction of anti-HRP binding to the cell surfaces (Figure 1H). Beneath the globular dome lies a constricted domain with filamentous structures (the pedunculus), which links to a crescent inside of the body wall. These filamentous structures showed a relatively strong labelling, perhaps due the dense clustering of cell membranes (Figure 1H).

The interior crescent shows about 40 cell bodies with the blank space of the nuclei beneath the epidermis. The cell surfaces extruding from the epithelium enlarge and display a inhomogeneous, granular structure with a strong anti-HRP binding (Figure 1I). Shortly thereafter the pleuropodia degenerate, although it could not be followed in detail by immunohistochemical marking. The subsequent secretion of cuticle prevents the penetration of the antibodies.

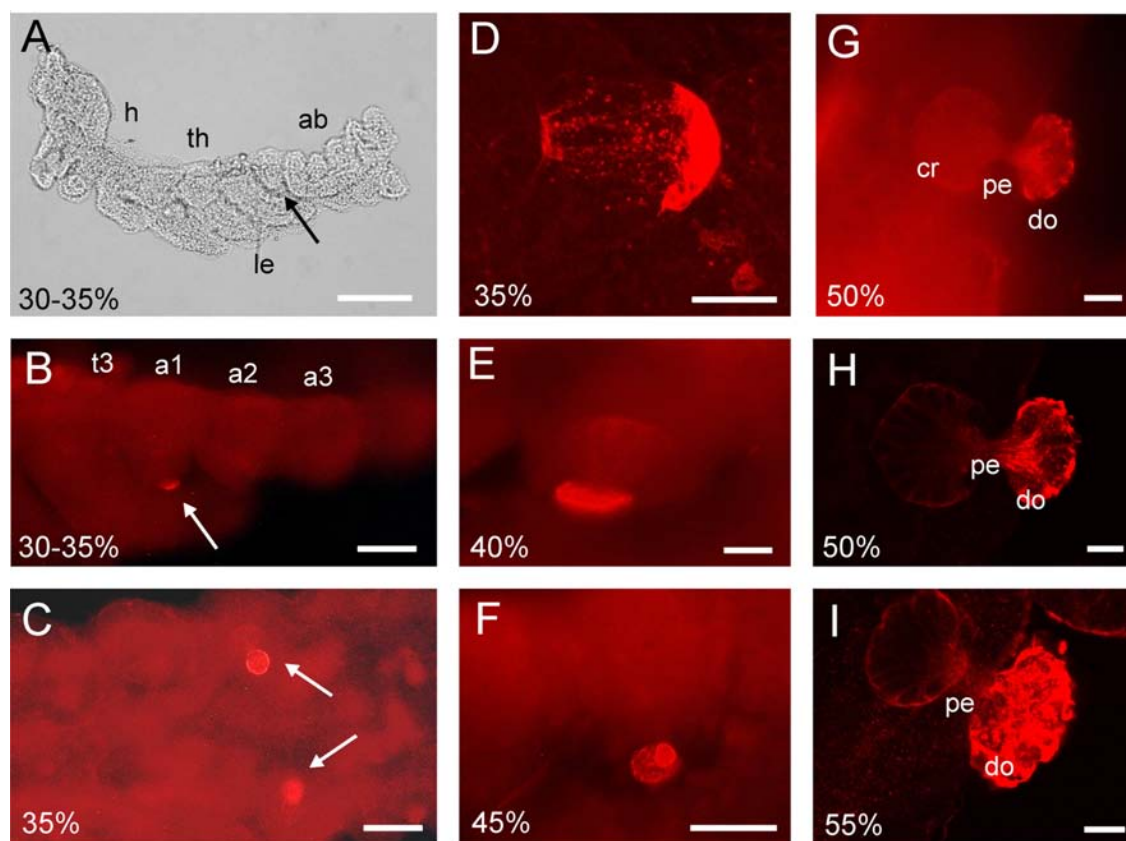
Interestingly, the marking of neuronal structures in the embryos was rather weak, although present. In most preparations of embryos between 35% and 50% a staining of some peripheral axons and neuronal cell bodies could be detected (data not shown).

## Discussion

This study contributes to the development of cicadas, which is only rarely investigated. After the landmark studies in Hemiptera (Wheeler 1889a, b; Heyman 1899) including the periodical cicada, *Cicada septemdecim*, now recognised as three species (Alexander & Moore 1962), only circumstantial evidence concerning embryogenesis of cicadas has been reported. Embryonic development is estimated from cross-species breeding experiments to take about 52–56 days (Lloyd & Dybas 1966). In this report embryonic development in *M. cassini* was related to criteria used for the grasshopper *S. nitens* (Bentley et al. 1979), which seems reasonable due to many morphogenetic similarities in embryogenesis. Development of the pleuropodium was followed using an anti-HRP immunochemical marker that was previously not known to bind to abdominal appendages.

### Insect pleuropodia

Adult insects are characterized by the absence of legs on the abdomen. By contrast embryos and juvenile stages often possess various appendages on the abdomen, including pleuropodia. The function and ontogenetic origin of insect pleuropodia has not been well characterized. Pleuropodia express, at least transiently, many genes involved in limb formation, such as *Distalless* (*dll*), *dachshund* and *SP8* (Lewis et al. 2000; Beermann et al. 2004; Yamamoto et al. 2004). The development of a limb seems to be suppressed by the homeotic gene Hox gene *Abd-A* (Lewis et al. 2000). Pleuropodia are similar to the legs in their ectodermal origin (Wheeler 1889a, b; our results). Some insects have



**Figure 1.** Embryonic developmental of the pleuropodium of *Magicicada cassini* as revealed by anti-HRP immunohistochemistry. The embryonic development has been staged in percent according to that of *Schistocerca nitens* (Bentley *et al.* 1972). **A**; Brightfield micrograph of an embryo of 30–35% of embryonic development. ab: abdomen (the distal segments are missing), h: head, le: leg anlagen, th: thorax. **B to I**; Anti-HRP immunohistochemistry of the different developmental stages of pleuropodia. a1–a3: abdominal segments 1 – 3, cr: crescent, do: dome, pe: pedunculus, t3: metathoracic segment. The arrows point to the pleuropodia in the first abdominal segment. Scales: A: 100µm, B,C,F: 50µm, D,E,G,H,I: 20µm.

evaginated pleuropodia (Louvet 1976) whereas many species have invaginated pleuropodia (Wheeler 1889a, b; Rost 2004). Our results show the ectodermal origin and the invagination process for *M. cassini*. Immunopositive cells are first located within the epidermis. Thereafter the number of cells increases and the cells sink into the body cavity. During this process morphogenesis of pleuropodia in *M. cassini* is further signified by polarisation between the apical and basal parts, and the appearance of the pedunculus. A migration of cells and their nuclei has also been seen in Blattaria (Lambiase *et al.* 2003) but further studies are needed for a comparative analysis. The morphogenesis of pleuropodia takes place mainly between 30 – 50% of embryonic development (see Bentley *et al.* 1979 for reference to developmental time), which relates to the onset of katatrepsis until dorsal closure. These data are consistent with the developmental stages reported previously (Wheeler 1890).

### Function

Pleuropodia display a large diversity in morphology (Sander *et al.* 1985; Lambiase *et al.* 2003). Correspondingly, evidence and speculation about their function varies and the functional relevance of pleuropodia is not clearly established in any insect. In insects, including *M. cassini*, the pleuropodia degenerate during embryogenesis restricting their function to the embryo. Different functions have been proposed and discussed (Wheeler 1890). Pleuropodia have been proposed to have glandular function by secreting a hatching enzyme (Engelmann 1957; Novák & Zambre 1974; Sander *et al.* 1985). Based on ultrastructural and morphological evidence an osmoregulatory function has been proposed for the strikingly long pleuropodia of Blattaria (Stay 1977). New techniques in molecular biology will hopefully reveal unequivocal evidence of function, which might be different in different species. It remains to be shown whether the formation of a gland is

controlled by genes like *dll* or whether its expression in pleuropodia is an evolutionary rudiment. A first indication could be a coexpression of *dll* and the HRP antigen, which has not yet been done due to the sporadic availability of embryos of a 17-year periodical cicada.

### Anti-HRP-immunoreactivity

The antibody used in this investigation against horseradish peroxidase binds specifically to cell surface glycoproteins on neurons in the developing and adult nervous system of insects (Jan & Jan 1982; Snow et al. 1987). A neuronal anti-HRP binding has been proposed for all ecdysozoans (Haase et al. 2001). The cicada *M. cassini* is no exception, although the neuronal marking is rather weak, compared to that of the pleuropodium. Generally, anti-HRP-antibody immunohistochemistry is not restricted to neurons and glia cells but in rare cases includes glandular structures, such as the garland cells of *Drosophila* (Jan & Jan 1982). The pleuropodial marking reported here is another case of anti-HRP binding to a secretory cell type. Interestingly, in other insects, such as the grasshoppers *Schistocerca gregaria*, *Chorthippus biguttulus* or the bushcricket *Mecopoda elongata*, no pleuropodial marking with anti-HRP was detected (Snow et al. 1987; Lakes-Harlan & Pollack 1993; unpublished results). This could indicate an anatomical or functional modification in cicadas. The immunohistochemical signal does not represent a neuronal marking in the pleuropodium of *M. cassini*. Neither axonal nor dendritic structures have been detected in any developmental stage within the pleuropodium.

The cellular function of anti-HRP epitopes in cicada pleuropodia remains poorly understood but may be speculated upon. Anti-HRP binds to cell adhesion molecules including the ontogenetically important Fasciclin I and II (Bastiani et al. 1987). Cell adhesion molecules attach cells or cell domains like axons to each other. For pleuropodia, the function of cell surface molecules detected by anti-HRP may be the compaction of the secretory cells. Ultrastructure studies have demonstrated that the cells are, at least in early stages, tightly attached to each other by adherens junctions in the apical domain (Louvét 1973, 1976, 1977). A significant immunoreactivity of anti-HRP marking occurs in the filamentous structures of the pleuropodium. In this structure adhesive cell surface molecules may be an additional mechanism to the described

adherens junctions by creating a high density of cellular processes. Apically, the constricted pedunculus broadens into the dome. The strong marking at the dome might be due to glycosylated carbohydrates associated with the proposed secretory function.

### Acknowledgements

We thank Thomas de Vries for driving long hours to provide us with branches full of cicada eggs and Dr. Thomas Reischig for help with the confocal microscopy.

### References

- Alexander RD, Moore TE. 1962. The evolutionary relationships of 17-year and 13-year cicadas, and three new species (Homoptera, Cicadidae, *Magiccicada*). *Miscellaneous Publications of the Museum of Zoology University of Michigan* 121: 1-59.
- Bastiani MJ, Harrelson AL, Snow PM, Goodman CS. 1987. Expression of Fasciclin I and II glycoproteins on subsets of axon pathways during neuronal development in the grasshopper. *Cell* 48: 745-755.
- Beermann A, Aranda M, Schröder R. 2004. The *Sp8* zinc-finger transcription factor is involved in allometric growth of the limbs in the beetle *Tribolium castaneum*. *Development* 131: 733-742.
- Bentley D, Keshishian H, Shankland M, Toroian-Raymond A. 1979. Quantitative staging of embryonic development of the grasshopper, *Schistocerca nitens*. *Journal of Embryology and Experimental Morphology* 54: 47-74.
- Engelmann F. 1957. Bau und Funktion des weiblichen Geschlechtsapparates bei der ovoviviparen Schabe *Leucophaea maderae* (Fabr.) (Orthoptera) und einige Beobachtungen über die Entwicklung. *Biologisches Zentralblatt* 76: 722-740.
- Haase A, Stern M, Wachtler K, Bicker G. 2001. A tissue-specific marker of Ecdysozoa. *Development Genes and Evolution* 211: 428-33.
- Heymons R. 1899. Beiträge zur Morphologie und Entwicklungsgeschichte der Rhynchoten. *Nova Acta Kaiserliche Deutsche Akademie für Naturforschung* 74: 349-456.
- Jan LY, Jan YN. 1982. Antibodies to horseradish peroxidase as specific neuronal markers in *Drosophila* and in grasshopper embryos. *Proceedings of the National Academy of Science* 79: 2700-2704.
- Jones BM. 1956. Endocrine activity during insect embryogenesis. Control of events in development following the embryonic moult (*Locusta migratoria* and *Locusta padalina*, Orthoptera). *Journal of Experimental Biology* 33: 685-696.

- Lakes-Harlan R, Pollack GS. 1993. Pathfinding of peripheral neurons in the central nervous system of an embryonic grasshopper (*Chorthippus biguttulus*). *Cell and Tissue Research* 273: 97-106.
- Lambiase S, Grigolo A, Morbini P. 2003. Ontogenesis of pleuropodia in different species of Blattaria (Insecta): a comparative study. *Italian Journal of Zoology* 70: 205-212.
- Lewis DL, DeCamillis M, Bennett RL. 2000. Distinct roles of the homeotic genes Ubx and abd-A in beetle embryonic abdominal appendage development. *Proceedings of the National Academy of Science* 97: 4504-4509.
- Lloyd M, Dybas HS. 1966. The periodical cicada problem. II. Evolution. *Evolution* 20: 466-505.
- Louvet JP. 1973. L'ultrastructure du pleuropode et son ontogenèse chez l'embryon du phasme *Carausius morosus* Br. I. Étude du pleuropode de l'embryon agé. *Annales des Sciences Naturelles Zoologie* 15: 525-594.
- Louvet JP. 1976. Morphogenèse du pleuropode chez l'embryon de *Carausius morosus* Br (Phasmida: Lonchodidae): Etude au microscope électronique à balayage. *International Journal of Insect Morphology and Embryology* 5: 35-49.
- Louvet JP. 1977. L'ultrastructure du pleuropode et son ontogenèse, chez l'embryon du phasme *Carausius morosus* Br. II. – Morphogenèse de l'organe et différenciation des structures cellulaires. *Annales des Sciences Naturelles Zoologie* 19: 3-61.
- Novák VJA, Zambre SK. 1974. To the problem of structure and function of pleuropodia in *Schistocerca gregaria* Forskål embryos. *Zoologisches Jahrbuch Physiologie* 78: 344-355.
- Rost MM, Poprawa I, Klag J. 2004. Ultrastructure of the pleuropodium in 8d-old embryos of *Themobia domestica* (Packard) (Insecta, Zygentoma). *Annals of the Entomological Society of America* 97: 541-547.
- Sander K, Gutzeit H, Jäckle H. 1985. Insect embryogenesis: morphology, physiology, genetical and molecular aspects. In: Kerkut GA, Gilbert LI, editors. *Comprehensive Insect Physiology Biochemistry and Pharmacology*. 1: 319-385. Oxford: Pergamon Press.
- Slifer E. 1937. The origin and fate of the membranes surrounding the grasshopper egg; together with some experiments on the source of the hatching enzyme. *Quarterly Journal of Microscopy Science* 79: 493-506.
- Slifer E. 1938. A cytological study of the pleuropodia of *Melanoplus differentialis* (Orthoptera, Acrididae) which furnishes new evidence that they produce the hatching enzyme. *Journal of Morphology* 63: 181-205.
- Snow PM, Patel NH, Harrelson AL, Goodman CS. 1987. Neural-specific carbohydrate moiety shared by many surface glycoproteins in *Drosophila* and grasshopper embryos. *Journal of Neuroscience* 7: 4137-4144.
- Stay B. 1977. Fine structure of two types of pleuropodia in *Diploptera punctata* (Diptera: Blaberidae) with observations on their permeability. *International Journal of Insect Morphology and Embryology* 6: 67-95.
- Stay B, Coon A. 1973. Developmental stages and hemical composition in embryos of the cockroach *Diploptera punctata*, with observations on the effect of diet. *Journal of Insect Physiology* 19: 147-171.
- Wheeler WM. 1889a. Über drüsenartige Gebilde im ersten Abdominalsegment der Hemipterenembryonen. *Zoologischer Anzeiger* XII: 500-504.
- Wheeler WM. 1889b. Homologues in embryo Hemiptera of the appendages to the first abdominal segment of other insect embryos. *American Naturalist* 23: 644-645.
- Wheeler WM. 1890. On the appendages of the first abdominal segment of embryo insects. *Transactions of the Wisconsin Academy of Science and Arts Letters* 8: 87-140.
- Yamamoto DS, Sumitani M, Tojo K, Lee JM, Hatakeyama M. 2004. Cloning of a decapentaplegic orthologue from the sawfly, *Athalia rosae* (Hymenoptera), and its expression in the embryonic appendages. *Development Genes and Evolution* 214: 128-33.