

## **Mean vertical deformation map in Jakarta coastal area.**

Source: Journal of Coastal Research, 102(sp1)

Published By: Coastal Education and Research Foundation

URL: <https://doi.org/10.2112/1551-5036-102.sp1.i>

---

BioOne Complete ([complete.BioOne.org](https://complete.BioOne.org)) is a full-text database of 200 subscribed and open-access titles in the biological, ecological, and environmental sciences published by nonprofit societies, associations, museums, institutions, and presses.

Your use of this PDF, the BioOne Complete website, and all posted and associated content indicates your acceptance of BioOne's Terms of Use, available at [www.bioone.org/terms-of-use](https://www.bioone.org/terms-of-use).

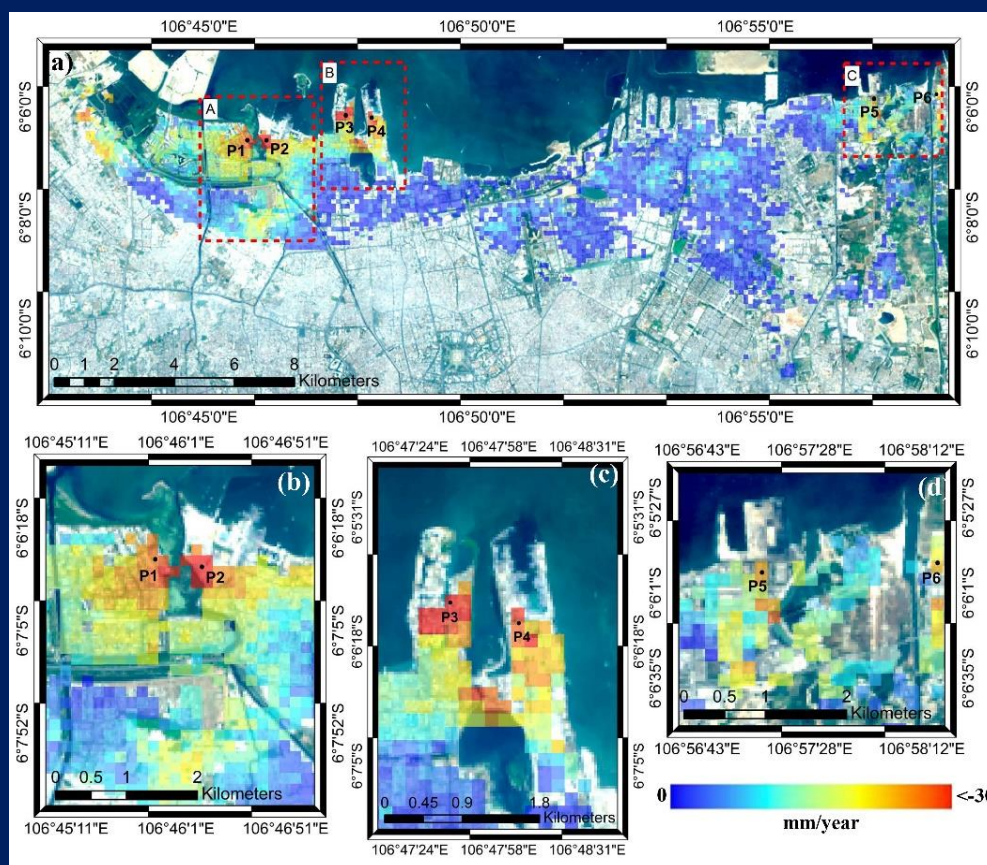
Usage of BioOne Complete content is strictly limited to personal, educational, and non - commercial use. Commercial inquiries or rights and permissions requests should be directed to the individual publisher as copyright holder.

---

BioOne sees sustainable scholarly publishing as an inherently collaborative enterprise connecting authors, nonprofit publishers, academic institutions, research libraries, and research funders in the common goal of maximizing access to critical research.

# Advances in Geospatial Research of Coastal Environments

Guest Editors: Hyung-Sup Jung, Saro Lee, Joo-Hyung Ryu, and Tinwei Cui



## Journal of Coastal Research Special Issue #102

*An International Forum for the Littoral Sciences*  
Christopher Makowski, Ph.D.  
Editor-in-Chief

Published by



# JOURNAL OF COASTAL RESEARCH

An International Forum for the Littoral Sciences

CHEF-HERAUSGEBER

313 S. Braeside Court  
Asheville, NC  
28803, U.S.A.

## EDITOR-IN-CHIEF EMERITUS

Charles W. Finkl  
Coastal Education and Research  
Foundation, Inc. (CERF)  
313 S. Braeside Court  
Asheville, NC 28803, U.S.A.  
cfinkl@cerf-jcr.com

## EDITOR-IN-CHIEF

**Christopher Makowski, Ph.D.**

Coastal Education and Research Foundation, Inc. (CERF)

Editorial Offices:  
7570 NW 47th Avenue  
Coconut Creek, FL  
33073, U.S.A.

RÉDACTEUR-EN-CHEF

(Business Office, Coconut Creek)  
Website: [www.CERF-JCR.org](http://www.CERF-JCR.org)  
E-mail: [cmakowski@cerf-jcr.com](mailto:cmakowski@cerf-jcr.com)

## EDITORIAL ASSISTANT

Barbara Russell  
Coastal Education and Research  
Foundation, Inc. (CERF)  
7570 NW 47th Avenue  
Coconut Creek, FL 33073, U.S.A.  
[barbara@cerf-jcr.com](mailto:barbara@cerf-jcr.com)

## BOOK REVIEW EDITOR

Luciana S. Esteves  
Faculty of Science and Technology  
Bournemouth University  
Dorset, England, U.K.  
[lesteves@bournemouth.ac.uk](mailto:lesteves@bournemouth.ac.uk)

## WEB DESIGN & DEVELOPMENT

Jon Finkl  
Media Mine  
17600 River Ford Drive  
Davidson, NC 28036, U.S.A.  
[jon@mediamine.net](mailto:jon@mediamine.net)

## MITHERAUSGEBER

**Edward J. Anthony**  
*Coastal Geomorphology*  
Dunkerque, France

**Patrick Barnard**  
*Coastal Geomorphology*  
Santa Cruz, California

**Natalia Bugajny**  
*Coastal Geomorphology*  
Szczecin, Poland

**M. Paula Bunicentro**  
*Coastal Geomorphology*  
Buenos Aires, Argentina

**David M. Bush**  
*Coastal Geology & Hazards*  
Carrollton, Georgia

**Ilya V. Buynovich**  
*Coastal Geology*  
Philadelphia, Pennsylvania

**Javier A. Carrió**  
*Sediment Processes*  
Valencia, Spain

**Insik Chun**  
*Coastal Engineering*  
Seoul, Republic of Korea

**Vanda Claudino-Sales**  
*Coastal Dynamics, Dunes*  
Ceard, Brazil

**Mark Crowell**  
*Coastal Zone Management*  
McLean, Virginia

**Omar Defeo**  
*Sandy Beach Ecology*  
Montevideo, Uruguay

**Joseph F. Donoghue**  
*Coastal Morphology & Hazards*  
Orlando, Florida

**Jean Ellis**  
*Aeolian Sediment Transport*  
Columbia, South Carolina

**Hany Elwany**  
*Coastal Engineering,*  
*Oceanography*  
La Jolla, California

**Luciana Esteves**  
*Coastal Flooding & Erosion*  
Bournemouth, England, UK

**Niki Evelpidou**  
*Sea-Level Change,*  
*Palaeogeography*  
Athens, Greece

**Oscar Manuel Ferreira**  
*Storm Impacts*  
Faro, Portugal

**Duncan M. FitzGerald**  
*Sediment Transport*  
Boston, Massachusetts

**Kazimierz K. Furmańczyk**  
*Marine Cartography*  
Szczecin, Poland

**Allen Gontz**  
*Geophysics, Stratigraphy*  
San Diego, California

**Gary B. Griggs**  
*Coastal Engineering & Hazards*  
Santa Cruz, California

**Pramod Hanamgond**  
*Coastal Geomorphology*  
Belgaum, India

**Hans Hanson**  
*Coastal Protection*  
Lund, Sweden

**Simon Haslett**  
*Paleoceanography*  
Swansea, Wales, UK

**Michael Hilton**  
*Dune Geomorphology & Ecology*  
Dunedin, New Zealand

**James R. Houston**  
*Sea-Level Change*  
Vicksburg, Mississippi

**Wenrui Huang**  
*Coastal Hydrodynamics*  
Tallahassee, Florida

**Federico I. Isla**  
*Sea-Level Change*  
Mar Del Plata, Argentina

**Nancy L. Jackson**  
*Coastal Geomorphology*  
Newark, New Jersey

**Markes E. Johnson**  
*Paleoshores, Coastal Sand Dunes*  
Williamstown, Massachusetts

**Timothy Kana**  
*Coastal Science & Engineering*  
Columbia, South Carolina

**Dieter H. Kelletat**  
*Coastal Geomorphology*  
Essen / Cologne, Germany

**Joseph T. Kelley**  
*Sea-Level Change*  
Orono, Maine

**Björn Kjerfve**  
*Physical Oceanography, Wetlands*  
College Station, Texas

**Nobuhisa Kobayashi**  
*Coastal Engineering*  
Newark, Delaware

## ASSOCIATE EDITORS

**Vladimir N. Kosmynin**  
*Coral Reefs, Coastal Ecology*  
Tallahassee, Florida

**Michael J. Lacey**  
*Coastal Landforms & Processes*  
West Branch, Iowa

**Stephen P. Leatherman**  
*Barrier Islands, Beach Erosion*  
Miami, Florida

**Jay Jooyong Lee**  
*Rip Currents, Coastal Hazards*  
Busan, Republic of Korea

**Charles Lemckert**  
*Environmental Fluid Dynamics*  
Bruce, ACT, Australia

**Hak Soo Lim**  
*Hydrodynamics, Coastal Engineering*  
Busan, Republic of Korea

**Ioannis Liritzis**  
*Geophysical Proxy Data,*  
*Archaeometry*  
Rhodes, Greece

**J. Paul Liu**  
*Sea-Level Change, Deltas*  
Raleigh, North Carolina

**Michel M. de Mahiques**  
*Sediment Processes*  
São Paulo, Brazil

**Gonzalo C. Malvárez**  
*Beach Morphodynamics*  
Seville, Spain

**Nobuo Mimura**  
*Environmental Engineering*  
Ibaraki, Japan

**Norberto C. Nadal-Caraballo**  
*Coastal Hazards*  
Vicksburg, Mississippi

**Fatima Navas**  
*Coastal Morphodynamics*  
Seville, Spain

**Robert Nicholls**  
*Global Climate Change*  
Southampton, England, UK

**Karl F. Nordstrom**  
*Coastal Geomorphology*  
New Brunswick, New Jersey

**Julian Orford**  
*Gravel Beaches, Storm Events*  
Belfast, Northern Ireland, UK

**Phil D. Osborne**  
*Sediment Dynamics*  
Vancouver, BC, Canada

**Hugh Parker**  
*Airborne Lidar Bathymetry*  
Adelaide, SA, Australia

**Charitha B. Pattiaratchi**  
*Physical Oceanography*  
Crawley, WA, Australia

**Carlos Pereira da Silva**  
*Coastal Zone Management*  
Lisbon, Portugal

**Michael Phillips**  
*Coastal Geomorphology*  
Doha, Qatar

**Orrin H. Pilkey, Jr.**  
*Coastal Geology*  
Durham, North Carolina

**Nobert P. Psuty**  
*Coastal Geomorphology*  
New Brunswick, New Jersey

**Elijah W. Ramsey, III**  
*Coastal Image Processing*  
Lafayette, Louisiana

**Tiffany Roberts Briggs**  
*Coastal Geomorphology*  
Boca Raton, Florida

**Kirt Rusenko**  
*Sea Turtles, Dune Restoration*  
Boca Raton, Florida

**Daniele Scarponi**  
*Marine Paleocology*  
Bologna, Italy

**Anja Scheffers**  
*Coastal Hazards,*  
*Palaeoclimatology*  
Lismore, NSW, Australia

**Vic Semeniuk**  
*Mangroves*  
Perth, WA, Australia

**Douglas J. Sherman**  
*Coastal & Aeolian Geomorphology*  
Tuscaloosa, Alabama

**Andrew D. Short**  
*Coastal Geomorphology*  
Sydney, NSW, Australia

**Pravi Shrestha**  
*Coastal Engineering*  
Irvine, California

**Tom Spencer**  
*Biogeomorphology*  
Cambridge, England, UK

**Marcel J.F. Stive**  
*Coastal Hydrodynamics*  
Delft, The Netherlands

## COMITÉ DE REDACTION

**Vallam Sundar**  
*Coastal Engineering*  
Chennai, India

**Ana Teodoro**  
*Remote Sensing*  
Porto, Portugal

**E. Robert Thielert**  
*Marine Geology*  
Woods Hole, Massachusetts

**Hannes Tönisson**  
*Coastal Evolution*  
Tallinn, Estonia

**Arthur C. Trembanis**  
*Coastal Morphodynamics*  
Newark, Delaware

**Frank Van Der Meulen**  
*Coastal Zone Management*  
Delft, The Netherlands

**Ana Vila Concejo**  
*Coastal Morphodynamics*  
Sydney, NSW, Australia

**Ian J. Walker**  
*Coastal Dunes & Sediments*  
Tempe, Arizona

**Ping Wang**  
*Beach Morphodynamics*  
Tampa, Florida

**Phil J. Watson**  
*Sea-Level Change*  
Gosford, NSW, Australia

**Harry F. Williams**  
*Paleotempestology*  
Denton, Texas

**Colin D. Woodroffe**  
*Coastal Geomorphology*  
Wollongong, NSW, Australia

**Zhaoqing Yang**  
*Hydrodynamic Modeling*  
Seattle, Washington

**Robert S. Young**  
*Coastal Processes*  
Cullowhee, North Carolina

**Guoliang Yu**  
*Sediment Transport*  
Shanghai, China

**Saiyu Yuan**  
*Water Flow, Sediment Transport*  
Nanjing, China



THE JOURNAL OF COASTAL RESEARCH (JCR) (ISSN 0749-0208) IS PUBLISHED BIMONTHLY FOR \$115.00 FOR INDIVIDUAL US CERF MEMBERS, \$125.00 FOR INDIVIDUAL INTERNATIONAL CERF MEMBERS, \$519.00 FOR US INSTITUTIONS, AND \$541.00 FOR INTERNATIONAL INSTITUTIONS BY THE COASTAL EDUCATION AND RESEARCH FOUNDATION, INC. (CERF), 7570 NW 47TH AVENUE, COCONUT CREEK, FL 33073-2723. PERIODICALS POSTAGE PAID AT FORT LAUDERDALE, FL AND ADDITIONAL MAILING OFFICES. **POSTMASTER:** SEND ADDRESS CHANGES TO JOURNAL OF COASTAL RESEARCH, ALLEN PRESS ASSOCIATION MANAGEMENT, P.O. BOX 1897, LAWRENCE, KS 66044-3018.

© 2020 Coastal Education and Research Foundation, Inc. [CERF].

© This paper meets the requirements of ANSI/NISO Z39.48-1992 (Permanence of Paper).





# JOURNAL OF COASTAL RESEARCH

An International Forum for the Littoral Sciences

## Supporting Scientific Institutions



- Consorzio Nazionale Interuniversitario per le Scienze del Mare (Co.N.I.S.Ma.) [Rome, Italy; [www.conisma.it/](http://www.conisma.it/)]
- Delft University of Technology [Department of Hydraulic Engineering, Delft, The Netherlands; <http://www.citg.tudelft.nl/over-faculteit/afdelingen/hydraulic-engineering/>]
- Duke University [Earth and Ocean Sciences Division, Durham, North Carolina, U.S.A.; <https://nicholas.duke.edu/marinelab>]
- Griffith University [Center for Infrastructure Engineering and Management, Southport, Queensland, Australia; <https://www.griffith.edu.au/>]
- Ibaraki University [Center for Water Environmental Studies, Mito, Japan; <http://www.cwes.ibaraki.ac.jp/>]
- International Geographical Union (IGU) [Commission on Coastal System (CCS); <http://www.igu-ccs.org/>]
- Royal Belgian Institute of Natural Sciences [Management Unit of the North Sea Mathematical Models (MUMM), Brussels, Belgium; <http://www.mumm.ac.be/EN/index.php>]
- Rutgers University [Institute of Marine and Coastal Sciences (IMCS), New Brunswick, New Jersey, U.S.A.; <http://marine.rutgers.edu/main/>]
- Universidad de la República [Marine Science Unit, Montevideo, Uruguay; <http://www.imber.info/Science/National-Network/URUGUAY/>]
- Universidade Nova de Lisboa [e-Geo Center for Geographical and Regional Planning Studies, Lisbon, Portugal; <http://e-geo.fcsh.unl.pt/>]
- University of California, Santa Cruz [Institute of Marine Sciences, Santa Cruz, California, U.S.A.; <http://ims.ucsc.edu/>]
- University of Delaware [School of Marine Science and Policy, Newark, Delaware, U.S.A.; <http://www.ocean.udel.edu>]
- University of Maine [Climate Change Institute, Orono, Maine, U.S.A.; <http://climatechange.umaine.edu/>]
- University of Sydney [Coastal Studies Unit, Sydney, New South Wales, Australia; <http://sydney.edu.au/>]
- University of Szczecin [Institute of Marine and Coastal Science, Szczecin, Poland; <http://www.wnoz.zti.km.szczecin.pl/en/1/inom/structure/>]
- University of Ulster [Environmental Sciences Research Institute, Coleraine, Northern Ireland; <http://www.ulster.ac.uk/es/research/>]
- University of Wales, Trinity Saint David [Swansea Metropolitan University, Mount Pleasant, Swansea, South Wales, U.K.; <http://www.uwtsd.ac.uk/>]
- U.S. Army Corps of Engineers [Coastal and Hydraulics Laboratory (CHL), Vicksburg, Mississippi, U.S.A.; <http://chl.erdc.usace.army.mil/>]
- U.S. Geological Survey [National Wetlands Research Center, Lafayette, Louisiana, U.S.A.; <http://www.nwrc.usgs.gov/>]

## Aims and Scope of the *Journal of Coastal Research* (JCR)

*Journal of Coastal Research* (JCR), an International Forum for the Littoral Sciences, is dedicated to all aspects of coastal research. These include geology, biology, geomorphology (physical geography), climate, littoral oceanography, hydrography, coastal hydraulics, environmental (resource) management, engineering, and remote sensing. Although each field functions effectively within its own purview, the cross-disciplinary nature of coastal studies requires familiarity with other fields as well. Hence, the scope of topics is necessarily broad in order to address the complexity of coastal biophysical and socio-economic interactions. Because of the wide range of interrelated topics, the journal invites original contributions and manuscripts dealing with theory, methodology, techniques, and field or applied topic studies on interdisciplinary coastal issues.

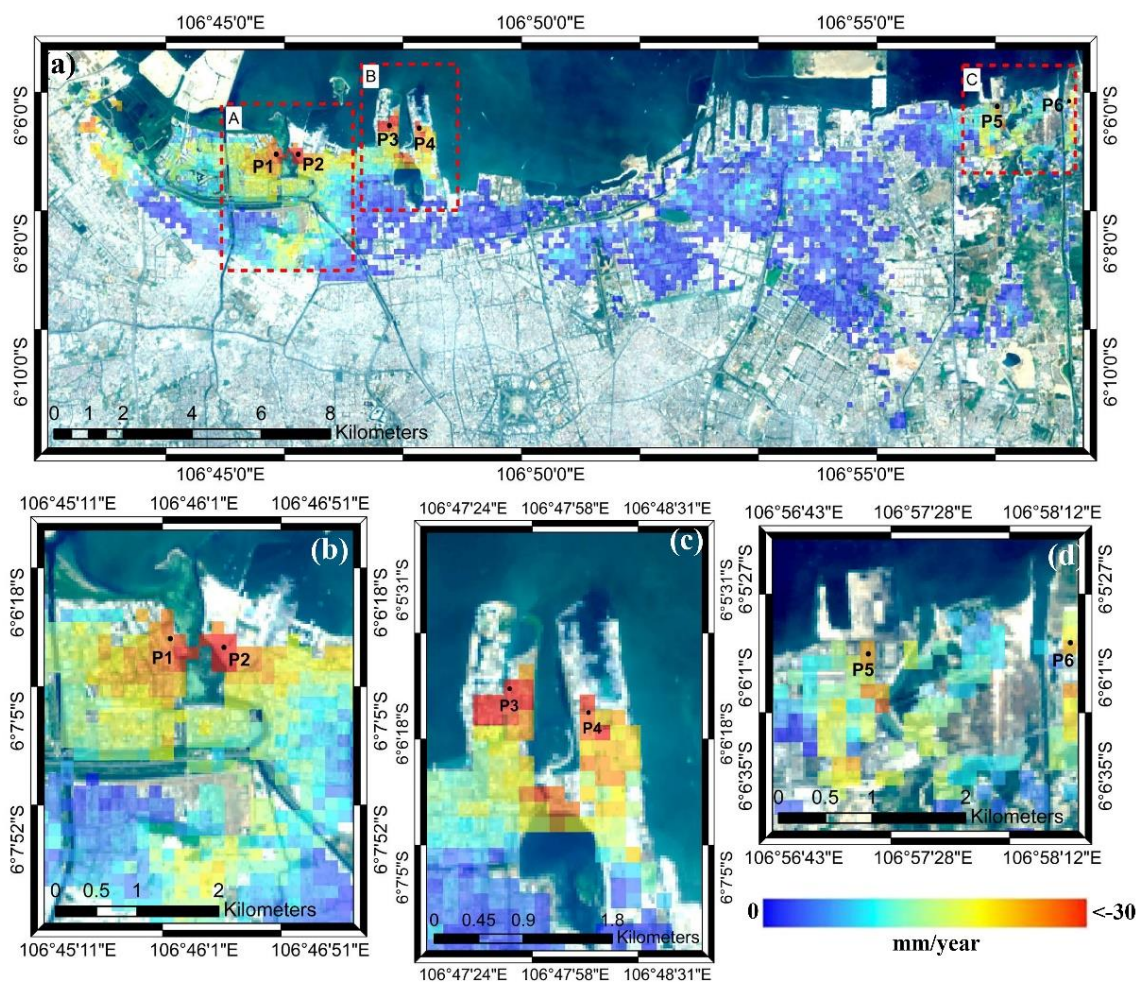
The journal encourages the dissemination of knowledge and understanding of the coastal zone by promoting cooperation and communication between specialists in different disciplines. Natural scientists, for example, are encouraged to collaborate with professionals in other fields to prepare contributions relating to the coastal zone that foster increased appreciation of coastal environments and processes. By means of this journal, with its scholarly and professional papers, systematic review articles, book and symposia reviews, communications and news, and special topical issues, an international forum for the development of integrated coastal research is provided.

## Advertising, Editorial, and Subscription Information

**Advertising and Editorial Office:** All advertising and editorial correspondence should be sent to Dr. Chris Makowski, Editor-in-Chief, *Journal of Coastal Research*, 7570 NW 47th Avenue, Coconut Creek, FL 33073, U.S.A. PHONE: (+1) 954-899-8416. E-MAIL: [cmakowski@cerf-jcr.com](mailto:cmakowski@cerf-jcr.com) WEBSITE: [www.cerf-jcr.org](http://www.cerf-jcr.org)

**Subscription Information:** The *Journal of Coastal Research* is a bimonthly publication. Calendar-year (2020) print and online subscription prices for the JCR are: \$115.00 for US CERF members / \$125.00 for International CERF members (\$95.00 for online only), and \$519.00 for US institutions / \$541.00 for International institutions (\$437.00 for online only). Additional surface charges may apply to subscribers located outside of the USA. For additional membership and subscription forms and information, please go to [www.cerf-jcr.org](http://www.cerf-jcr.org). To obtain a membership or subscription form by mail, please send request to *Journal of Coastal Research*, P.O. Box 7065, Lawrence, KS 66044. Back Issues and Special Issues of the JCR, when available, can be directly requested at: [cerf.jcr@gmail.com](mailto:cerf.jcr@gmail.com).

**Abstracting Information:** The *Journal of Coastal Research* (JCR) is currently surveyed in: *Web of Science* (WoS) *Core Collection* / *Web of Knowledge* (Clarivate Analytics); *Science Citation Index Expanded*; *SCOPUS* (Elsevier); *BioOne Complete*; *JSTOR*; *EBSCO*; *ProQuest*; *Charlesworth*; *BIOSIS Previews*; *Zoological Record*; *Biological Abstract*; *H.W. Wilson Company*; *Thomson Reuters (ISI)*; *Cabells Scholarly Analytics*; *Essential Science Indicators*; *Chemical Abstracts Service (CAS)*; *Gale Group* (Gale / Cengage Learning); *Copyright Clearance Center, Inc. (CCC)*; *Current Contents - Physical, Chemical & Earth Sciences*; and *Current Contents - Agriculture, Biology & Environmental Sciences*.



**Mean vertical deformation map in Jakarta coastal area.** The mean vertical deformation map above was generated using Sentinel-1 SAR data images between 2017-2020 using StaMPS algorithm. The mean vertical deformation map was overlaid with the depicted image from natural band combination (B4, B3, B2) of Landsat 8 OLI/TIRS C1 Level-1 taken on September 11, 2019, acquired by USGS.

# ***Journal of Coastal Research (JCR) Special Issue #102***

## ***Advances in Geospatial Research of Coastal Environments***

### **TABLE OF CONTENTS**

#### **Editorial: Special Issue on “Advances in Geospatial Research of Coastal Environments”**

Hyung-Sup Jung, Saro Lee, Joo-Hyung Ryu, and Tingwei Cui ..... vi-xiii

#### **Estimation of Aboveground Vegetation Nitrogen Contents in the Yellow River Estuary Wetland Using GaoFen-1 Remote Sensing Data**

Jianbu Wang, Guangbo Ren, Zhaoyang Lin, Andong Wang, Yabin Hu, Xiaomin Li, Peiqiang Wu, Yi Ma, and Jie Zhang ..... 1-10

#### **Multi-scale Spectral-Spatial Remote Sensing Classification of Coral Reef Habitats Using CNN-SVM**

Jiaxin Wan and Yi Ma ..... 11-20

#### **High-accuracy Remote Sensing Water Depth Retrieval for Coral Islands and Reefs Based on LSTM Neural Network**

Xiao-Min Li, Yi Ma, Zi-Hao Leng, Jie Zhang, and Xi-Xi Lv ..... 21-32

#### **A Method for Classifying Land and Ocean Area by Removing Sentinel-1 Speckle Noise**

Hyeong-Gyeong Han, and Moun-Jin Lee ..... 33-38

#### **Analysis of Trends in Marine Water Quality Using Environmental Impact Assessment Monitoring Data : A Case Study of Busan New Port**

Sunmin Lee, Eojin Lee, Heon Seok Yoo, and Moun-Jin Lee ..... 39-46

#### **Exploring Changes in Coastal Environment Policy Using Text Mining: A Case Study in South Korea**

Nam-Wook Cho and Moun-Jin Lee ..... 47-53

#### **Determine the Stumpf 2003 Model Parameters for Multispectral Remote Sensing Shallow Water Bathymetry**

Jinshan Zhu, Peng Hu, Lulu Zhao, Lei Gao, Jiawei Qi, Ya Zhang, and Ruifu Wang ..... 54-62

#### **The Effect of Laver-farming on the Distribution of Copepod Community in the West Coast of Korea**

Seong-Ki Kim, Jeong-Cheol Kim, and Jong-Yun Choi ..... 63-68

#### **Changing Distributions of Zooplankton Communities in a Coastal Lagoon in Response to Rainfall Seasonality**

Jong-Yun Choi, Jeong-Cheol Kim, and Seong-Ki Kim ..... 69-74

#### **Land Subsidence Measurement of Jakarta Coastal Area Using Time Series Interferometry with Sentinel-1 SAR Data**

Wahyu Luqmanul Hakim, Arief Rizqiyanto Achmad, Jinah Eom, and Chang-Wook Lee ..... 75-81

#### **Optical Remote Sensing Ship Image Classification Based on Deep Feature Combined Distance Metric Learning**

Shuangmei Zhao, Yongjie Xu, Wenjing Li, and Haitao Lang ..... 82-87

<b>Characteristics of Geological Lineaments along the Eastern Coast of the Korean Peninsula: A Statistical Approach</b>	
Taehyung Kim, Young-Seog Kim, and Hong-Jin Lee.....	88-100
<b>Topographical Change in Coastal Areas Arising from Soil Erosion in the Riparian Zone</b>	
Jeong-Cheol Kim, Hyeon-Jeong Lee, Jong-Yun Choi, Seong-Ki Kim, and Hyung-Sup Jung.....	101-106
<b>Distribution and Utilization Plan of Reclaimed Lands (RLs) as Waterfowl Habitat on the South Coast of Korea</b>	
Seong-Ki Kim, Jeong-Cheol Kim, and Jong-Yun Choi.....	107-112
<b>An Algorithm for Sea Ice Drift Retrieval Based on Trend of Ice Drift Constraints from Sentinel-1 SAR Data</b>	
Xi Zhang, Yixun Zhu, Jie Zhang, Junmin Meng, Xiaona Li, and Xingxing Li .....	113-126
<b>Observation of Diffusive Methane Emission from Holocene Mud Deposits on the Continental Shelf Offshore Southeastern Korea</b>	
Jong-Hwa Chun, Yuri Kim, Ji-Young Choi, Young-Jun Kim, Hong-Jin Lee, and Yong Hoon Kim.....	127-136
<b>Oil Spill Detection of Kerch Strait in November 2007 from DualPolarized TerraSAR-X Image Using Artificial and Convolutional Neural Network Regression Models</b>	
Won-Kyung Baek, Hyung-Sup Jung, and Daeseong Kim.....	137-144
<b>Coastal Image Captioning</b>	
Qiaoqiao Yang, Guangxing Wang, Xiaoyu Zhang, Christos Grecos, and Peng Ren .....	145-150
<b>Coastal Image Classification under Noisy Labels</b>	
Xiaoxiao Tai, Guangxing Wang, Christos Grecos, and Peng Ren.....	151-156
<b>Geostatistical Classification of Intertidal Surface Sediments Using Log-ratio Transformation and High-resolution Remote Sensing Imagery</b>	
No-Wook Park and Dong-Ho Jang.....	157-165
<b>Ship Matching Using Convolutional Neural Network in Multi-source Synthetic Aperture Radar Images</b>	
Lihui Niu and Haitao Lang.....	166-175
<b>Remote Sensing Classification of Aquatic Vegetation in Ulansuhai Lake Based on Discrete Particle Swarm Optimization Algorithm</b>	
Mengmeng Cao, Song Qing, Yuchunzi Du, Ruiqiang Yuan, Buri Shun, Yanling Hao, and Wenjing Zhao .....	176-186
<b>High-Resolution Seismic Stratigraphy Offshore Haeundae Beach in Busan, South Korea</b>	
Dong-Lim Choi, Dong-Hyeok Shin, Jae-Youll Jin, Yong-Kuk Lee, and Byung-Cheol Kum.....	187-193
<b>Absolute Salinity Measurement Based on Microfiber Coaxial Mach-Zehnder Interferometer</b>	
Yu Li, Jing Wang, and Shanshan Wang .....	194-201
<b>Machine Learning Approaches for Quantifying <i>Margalefidinium Polykrikoides</i> Bloom from Airborne Hyperspectral Imagery</b>	
Jisun Shin, Soo Mee Kim, and Joo-Hyung Ryu .....	202-207
<b>Comparison of Input Image Dimensions for Ship Detection from KOMPSAT-5 SAR Image Using Deep Neural Network</b>	
Wook Park, Won-Kyung Baek, Joong-Sun Won, Hyung-Sup Jung.....	208-217

<b>Land Subsidence Measurement in Reclaimed Coastal Land: Noksan Using C-Band Sentinel-1 Radar Interferometry</b>	
Arip Syaripudin Nur, Arief Rizqiyanto Achmad, and Chang-Wook Lee .....	218-223
<b>Classification of Green Tide at Coastal Area Using Lightweight UAV and only RGB Images</b>	
Keunyoung Kim, Bum-Jun Kim, Euihyun Kim, and Joo-Hyung Ryu .....	224-231
<b>A Study on Seasonal Dynamics of Suspended Particulate Matter in Korean Coastal Waters Using GOCI</b>	
Yoon-Kyung Lee, Jong-Kuk Choi, and Hee Jun Lee .....	232-245
<b>Mapping Oyster Reef Distribution Using Komsat-2/3 and Linear Spectral Unmixing Algorithm: A Case Study at Hwangdo Tidal Flat</b>	
Kye-Lim Kim and Joo-Hyung Ryu .....	246-253
<b>Storage Class Memory Based Hybrid Memory System for Practical Remote Sensing</b>	
Sungmin Koo, Jungmin Seo, Yujae Song, and Seungjae Baek .....	254-260
<b>Structural Analysis of a Fault-related Anticline in the Southwestern Gyeonggi Massif, Korea Using an Unmanned Aerial Vehicle and Field Surveys: The Role of Rejoining Splays in a Duplex-like Structure</b>	
Inho Kim, Seung-Ik Park, and Hong-Jin Lee .....	261-270
<b>Remote Sensing of Spatial-temporal Variation of Chlorophyll-a in the Jiaozhou Bay Using 32 Years Landsat Data</b>	
Ming Wu, Yongfang Zhao, Li'e Sun, Jue Huang, Xiaohua Wang, and Yue Ma .....	271-279
<b>An Arctic Gridded Sea Surface Temperature Product Constructed from Spaceborne Radiometer Data</b>	
Weifu Sun, Jie Zhang, Junmin Meng, Yuheng Li, and Kaixiang Cao .....	280-286
<b>Assessment of the Ecological Security of the Coastal Zone of the Guangdong/Hong Kong/Macao Greater Bay Area</b>	
Wenjing Zhao, Guirong Zhao, Jing Yang, Min Xu, and Jiefeng Kou .....	287-295
<b>Deriving Natural Coastlines Using Multiple Satellite Remote Sensing Images</b>	
Changying Wang, Jungang Yang, Jinhua Li, and Jialan Chu .....	296-302
<b>Remote Sensing of Suspended Particulate Matter in Optically Complex Estuarine and Inland Waters Based on Optical Classification</b>	
Yalei Yue, Song Qing, Ruixiang Diao, and Yanling Hao .....	303-317
<b>Automatic Extraction of Green Tide Using Dual Polarization Chinese GF-3 SAR Images</b>	
Haifei Yu, Changying Wang, Yi Sui, Jinhua Li, and Jialan Chu .....	318-325
<b>Geolocation Accuracy Evaluation of GF-4 Geostationary High-Resolution Optical Images over Coastal Zones and Offshore Areas</b>	
Yunhong Wei, Ziyue Zhang, Bing Mu, Ying Li, Quanbin Wang, and Rongjie Liu .....	326-333
<b>Study on Mangrove of Maximum Likelihood: Reclassification Method in Xiezhou Bay</b>	
Yan Liao, Yaqin Liao, Wenjing Zhao, Qinghua Chen, Ting Li, and Tianjian Yang .....	334-343



# COASTAL EDUCATION AND RESEARCH FOUNDATION (CERF)

7570 NW 47th Avenue  
Coconut Creek, FL 33073, U.S.A.

## Officers of the Foundation

Founded in 1983 by: Charles W. Finkl, Sr. (Deceased),  
Charles W. Finkl, Jr., Rhodes W. Fairbridge (Deceased),  
and Maurice L. Schwartz (Deceased)

### President &

#### Executive Director:

Charles W. Finkl

### Secretary:

Heather M. Vollmer

### Senior Vice President &

#### Assistant Director:

Christopher Makowski

### Executive Assistant:

Barbara Russell

## CERF-JCR Regional Vice Presidents

### North America

Gary B. Griggs  
James R. Houston  
Timothy W. Kana  
Norberto C. Nadal-Caraballo

### Western Europe

Luciana S. Esteves  
Carlos Pereira da Silva  
Marcel J.F. Stive

### Eastern Europe

Niki Evelpidou  
Kazimierz K. Furmańczyk

### Oceania

Charles Lemckert  
Anja Scheffers  
Vic Semeniuk  
Andrew D. Short

### Southeast Asia

Hak Soo Lim  
Nobuo Mimura

### South America

Vanda Claudino-Sales  
Omar Defeo

### Middle East and N. Africa

Michael Phillips

## Board of Directors (Trustees)

Vanda Claudino-Sales	Stephen P. Leatherman	Vic Semeniuk
Charles W. Finkl	Charles Lemckert	Douglas J. Sherman
Duncan M. FitzGerald	Gonzalo C. Malvárez	Andrew D. Short
Gary B. Griggs	Christopher Makowski	Daniel J. Stanley
James R. Houston	Carlos Pereira da Silva	Marcel J.F. Stive
Robert Huff	Michael Phillips	Phil J. Watson
Timothy W. Kana	Norbert P. Psuty	
Joseph T. Kelley	Elijah W. Ramsey, III	

### Lifetime Members

Camilo M. Botero	Victor V. Klemas	Nelson G. Rangel-
David M. Bush	Tetsuya Kusuda	Buitrago
Frédéric Bouchette	Stephen P. Leatherman	Yoshiki Saito
Yong-Sik Cho	Charles Lemckert	Anja Scheffers
Insik Chun	J. Paul Liu	Andrew D. Short
Nicholas K. Coch	Gonzalo C. Malvárez	Rodolfo Silva
Hany Elwany	Ashish J. Mehta	Jean-Daniel Stanley
Kazimierz K.	Norberto C. Nadal-	Marcel J.F. Stive
Furmańczyk	Caraballo	Charles Thibault
Allen Gontz	Fatima Navas	Erik van Wellen
Gary B. Griggs	Philip D. Osborne	Ya Ping Wang
Carl H. Hobbs, III	Michael Phillips	Allan T. Williams
James R. Houston	Orrin H. Pilkey, Jr.	Robert S. Young
Paul S. Kench	Norbert P. Psuty	Wei Zhang
Björn Kjerfve		

### Patron Members

Lindino Benedet	John W. Jenson
Georges Chapalain	Timothy W. Kana

## CERF-JCR Society Information

The Coastal Education and Research Foundation (CERF) is a non-profit research society dedicated to the advancement of the coastal sciences and serves as the official publisher of the international *Journal of Coastal Research* (JCR). CERF-JCR is devoted to the multi-disciplinary study of complex problems related to the coastal zone. Our purpose is to help in the translation and interpretation of coastal issues for the public and to assist professional and academic research programs by supporting and encouraging field and laboratory studies on a local, national, and global basis. Through printed scientific publications, current online content, and renowned international symposiums, CERF-JCR brings accurate information to both the public and researchers alike on all aspects of coastal issues in an effort to maintain and improve the quality of shoreline resources.

The *Journal of Coastal Research* (JCR) is one of the leading international journals for coastal studies and processes, and is published bi-monthly by the Coastal Education and Research Foundation (CERF). By covering the entire field of coastal research, the JCR encompasses all subjects relevant to natural and engineered environments (*i.e.* freshwater, brackish, or marine) and the protection/management of their resources in the vicinity of coastlines around the world. Even though the journal broadly focuses on immediate shoreline zones, the JCR also embraces those coastal environments that either reach some indefinite distance inland or that extend seaward beyond the outer margins of the sublittoral (neritic) zone. We encourage you to visit [www.cerf-jcr.org](http://www.cerf-jcr.org) for more information and invite you all to be a part of our CERF-JCR coastal research society.



## CERF-JCR MEMBERSHIP

Society members are those individuals that support the aims of CERF and the JCR. More information is available at: [www.cerf-jcr.org](http://www.cerf-jcr.org). CERF-JCR Memberships are available in different categories with certain privileges and can be viewed at: <https://cerf.allenpress.com/cerf/MEMBERSHIP.aspx>

Subscription information is available upon request by writing to: [cerf.jcr@gmail.com](mailto:cerf.jcr@gmail.com). The CERF-JCR subscriptions office is located at: Allen Press, Inc., P.O. Box 1897, Lawrence, KS 66044, U.S.A.

### Editor-in-Chief

Christopher Makowski, Ph.D.

Dr. Christopher Makowski is the Senior Vice President and Co-Executive Director of the Coastal Education and Research Foundation (CERF), the official publisher of the international *Journal of Coastal Research* (JCR). He received B.Sc. (Marine Biology), M.Sc. (Marine Ecosystem Diversity), and Ph.D. (Coastal Geoscience and Remote Sensing of Biogeomorphological Resources) degrees from Florida Atlantic University of Boca Raton, Florida, USA, and has worked for over 25 years in the coastal research community, holding titles of Assistant Director (Coastal Planning & Engineering's Marine Science and Biological Research Department), Principal Marine Scientist (Collier County, Florida, USA), and Senior Advisor (International Coastal Symposium [ICS]). Dr. Makowski has published numerous peer reviewed papers, authored multiple chapters, and co-edited various volumes in Springer's Coastal Research Library (CRL) Series and Encyclopedia of Earth Sciences Series (EESS). In addition to these accomplishments, he is professionally recognized by the American Academy of Underwater Sciences (AAUS) and is certified as a Master Scuba Diver Trainer through the Professional Association of Diving Instructors (PADI), having logged over 2,000 underwater dives on six different continents. Other professional registrations, certifications, and accreditations include: Coastal Education and Research Foundation (CERF) Board of Directors (Trustees), BioOne Board of Directors, International Society for Reef Studies (ISRS) Member, Florida Association of Environmental Professionals (FAEP) Chapter Member, American Academy of Underwater Sciences (AAUS) Registered Diving Safety Officer, American Association for the Advancement of Science (AAAS) Member, National Marine Fisheries Service (NMFS) Certified Marine Mammal and Protected Species Observer, Professional Association of Diving Instructors (PADI) Open Water Scuba Diver Instructor, PADI Enriched Air Nitrox Specialty Instructor, Emergency First Responder (CPR/FirstAid/AED) Instructor, PADI Specialty Underwater Photographer Instructor, and Divers Alert Network (DAN) Sustaining Member.

For more information, please visit Dr. Makowski's home page at: [www.cerf-jcr.org](http://www.cerf-jcr.org)

## International Coastal Symposium (ICS) Official Meeting of CERF-JCR

The International Coastal Symposium (ICS) was originally set up by Per Bruun (deceased) and Charles W. Finkl as the official meeting of the Coastal Education and Research Foundation (CERF) and the *Journal of Coastal Research* (JCR), with one of the first meetings being held in Hilton Head, South Carolina, in 1993. After the repeated success of these meetings, CERF-JCR moved the ICS to an international platform by holding these conferences in conjunction with local sponsors in the United States, Australia, Brazil, Iceland, New Zealand, Northern Ireland, Poland, Portugal, and South Korea. The ICS brings together delegates from all over the world to collaborate and discuss the most current coastal research studies and projects. During the ICS 2014, which was held in Durban, South Africa, a grand celebration took place to mark the 30th Anniversary of CERF and the JCR. For more information, please visit [www.cerf-jcr.org](http://www.cerf-jcr.org).

# Journal of Coastal Research (JCR)

**SPECIAL ISSUE NO. 102 (pages 1-343)**

**ISSN 0749-0208**

**FALL 2020**

