



Unusual Behaviour — Unusual Morphology: Mutualistic Relationships between Ants (Hymenoptera: Formicidae) and *Diaphorina enderleini* (Hemiptera: Psylloidea), Associated with *Vernonia amygdalina* (Asteraceae)

Authors: Aléné, Désirée Chantal, Djéto-Lordon, Champlain, and Burckhardt, Daniel

Source: African Invertebrates, 52(2) : 353-361

Published By: KwaZulu-Natal Museum

URL: <https://doi.org/10.5733/afin.052.0210>

BioOne Complete (complete.BioOne.org) is a full-text database of 200 subscribed and open-access titles in the biological, ecological, and environmental sciences published by nonprofit societies, associations, museums, institutions, and presses.

Your use of this PDF, the BioOne Complete website, and all posted and associated content indicates your acceptance of BioOne's Terms of Use, available at www.bioone.org/terms-of-use.

Usage of BioOne Complete content is strictly limited to personal, educational, and non-commercial use. Commercial inquiries or rights and permissions requests should be directed to the individual publisher as copyright holder.

BioOne sees sustainable scholarly publishing as an inherently collaborative enterprise connecting authors, nonprofit publishers, academic institutions, research libraries, and research funders in the common goal of maximizing access to critical research.

Unusual behaviour – unusual morphology: mutualistic relationships between ants (Hymenoptera: Formicidae) and *Diaphorina enderleini* (Hemiptera: Psylloidea), associated with *Vernonia amygdalina* (Asteraceae)

Désirée Chantal Aléné¹, Champlain Djiéto-Lordon¹ and Daniel Burckhardt²

¹Laboratory of Zoology, Faculty of Science, University of Yaounde 1, P.O. Box 812, Yaounde, Cameroon; chantalalene@yahoo.fr, champlain_djiето@yahoo.ca

²Naturhistorisches Museum Basel, Augustinergasse 2, CH-4001, Basel, Switzerland; daniel.burckhardt@unibas.ch

ABSTRACT

Diaphorina enderleini, known from Sudan, Tanzania and Yemen, is reported for the first time from Cameroon, Ethiopia and Kenya. Observations and records from Cameroon and Ethiopia show that it develops on *Vernonia amygdalina*. The species is diagnosed and the last instar larva is described and illustrated. The larvae lack a functional circumanal ring and do not produce wax, a feature unusual for psyllids. The lack of wax deprives them of the protection common in various free-living psyllids. Consequently the psyllid is involved in an unusual mutualistic interaction with the ants *Pheidole megacephala* and *Crematogaster striatula*. This association is described and discussed.

KEY WORDS: Hemiptera, Psylloidea, Formicidae, *Diaphorina enderleini*, *Pheidole megacephala*, *Crematogaster striatula*, *Myrmecaria opaciventris*, *Camponotus acvapimensis*, *Vernonia amygdalina*, Cameroon, behaviour.

INTRODUCTION

Most Sternorrhyncha and Fulgoromorpha are phloem feeders. Phloem sap provides a highly unbalanced diet, resulting in the excretion of large amounts of honeydew. This carbohydrate-rich liquid provides a valuable food resource for various insects such as ants (Way 1963; Gullan 2001). Ants actively collect honeydew and often live in close association with sap suckers (Way 1963). This mutualistic relationship is beneficial for both partners (Buckley 1987; Delabie 2001; Davidson *et al.* 2003). The ants obtain high quality food and the hemipterans receive protection from predators and parasitoids (Novak 1994). Ant attendance is well known from aphids (Kaplan & Eubanks 2005; Idechiil *et al.* 2007; Grover *et al.* 2008; Nielsen *et al.* 2010) and scale insects (Heckroth *et al.* 1998; Johnson *et al.* 2001; Ueda *et al.* 2008; Ben-Dov 2010) but seems less relevant in psyllids (Novak 1994). Based on observations conducted in Cameroon, we report ant attendance of the widely distributed Afrotropical psyllid *Diaphorina enderleini* Klimaszewski, 1964, developing on *Vernonia* species.

Psyllids or jumping plant-lice are one of the four superfamilies of Sternorrhyncha comprising to date some 3850 described species worldwide. The group is particularly species-rich in the tropics. Psyllids are generally monophagous or narrowly oligophagous with respect to their angiosperm hosts (Hodkinson 1974). Often, related psyllid species develop on related host-plant taxa. A major exception to this high host conservatism is the large Old World genus *Diaphorina* Löw, 1880, which recruits hosts from at least 19 families in 10 plant orders of dicotyledonous angiosperms (Hollis 1987; Burckhardt & van Harten 2006).

Diaphorina enderleini was originally described by Enderlein (1910), as *Gonanoplicus guttulatus*, based on material collected from Tanzania. Klimaszewski (1964) transferred

G. guttulatus to *Diaphorina* and replaced the name for reasons of homonymy with *D. enderleini*. Loginova (1978) described *Diaphorina siluncula* from Sudan. Burckhardt and Mifsud (1998) finally synonymised *D. siluncula* with *D. enderleini*, provided a detailed morphological description of the adults and reported the species from Yemen. The psyllid is currently known from Tanzania, Sudan and Yemen in the Afrotropical Region (Burckhardt & van Harten 2006). So far nothing has been known about the larvae and host plants of *D. enderleini* apart from the very brief and not diagnostic description by Enderlein (1910).

Vernonia amygdalina Delile (Asteraceae) is a perennial shrub native to tropical Africa and the southern tip of the Arabian Peninsula. It is a multipurpose plant used as a medicinal plant throughout its distribution range (CVPSL 2003; Banjo *et al.* 2006; Nzigidahera 2008), or as a vegetable in West Africa (Anonymous 2005; Asawalam & Hassanali 2006). *V. amygdalina* naturally colonises secondary forests and cultivated land. For this reason it can be regarded as a non-timber forest product (NTFP). It is also planted in gardens and as fences around houses. For cultivation it is generally propagated by planting shoots (Shippers 2000), and thus can be regarded as a crop. Some studies highlight its insecticidal or insect repellent properties (Asawalam & Hassanali 2006; Kabeh & Jalingo 2007). These properties, if proved, may be due to the presence of lactone, oxalic acid and hydrocyanic acid (HCN) found in its leaf dust (Kabeh & Jalingo 2007). Other studies have tested its fodder potentials (Bonsi *et al.* 1995; El Hassan *et al.* 2000; Mekonnen *et al.* 2009; Tabuti & Lye 2009). In Cameroon *V. amygdalina* is known as Ndolè, an essential ingredient of the popular meal offered by all local restaurants. The increased demand for this vegetable in cities stimulates the intensification of its production in urban and periurban areas (Anonymous 2005). It is even sold outside Cameroon, as in Nigeria, Equatorial Guinea or Gabon, and sometimes in Europe for niche markets (e.g. Africans in European countries) (Bosch *et al.* 2009).

Several insects, including Hemiptera (Sternorrhyncha, Cicadomorphs, Fulgoromorpha and Heteroptera), Coleoptera (Coccinellidae and Cucurionidae), Lepidoptera and Orthoptera, are reported feeding on leaves of this important crop (Banjo *et al.* 2006; Alene *et al.* unpubl. data) and *D. enderleini* constitutes a potential pest. The present paper aims to provide additional information on the morphology, especially of the fifth instar larva, and to describe the relationships between the psyllids and four associated ant species.

MATERIAL AND METHODS

Material of *D. enderleini* from Cameroon collected on *V. amygdalina* was examined from the localities listed in Table 1. The specimens are preserved dry, slide-mounted, or stored in 70% ethanol, and are deposited in the following institutions: Laboratory of Zoology, University of Yaounde 1, Cameroon (LZUY1); Muséum d'histoire naturelle, Genève, Switzerland (MHNG); Naturhistorisches Museum Basel, Switzerland (NHMB). Additional material examined comes from Ethiopia (*Vernonia amygdalina*, NHMB), as well as Kenya and Yemen (both without host data, MHNG).

The drawings and measurements were made from slide-mounted specimens. The morphological terminology follows Hollis (1976, 1984) and Ossiannilsson (1992). The following abbreviations are used: BL – body length; BW – body width; AL – antenna length; FL – forewing pad length; MTL – metatibia length; CL – caudal plate length; CW – caudal plate width; BL/BW – ratio of body length to body width.

TABLE 1
Collecting localities of *Diaphorina enderleini* in Cameroon.

Localities	Region	GPS Coordinates	Altitude
Nkolondom		3°57'07"N 11°29'27"E	645 m
Obala		4°11'02.0"N 11°34'11.4"E	559 m
Okola	Centre	4°11'39.0"N 11°23'00.1"E	604 m
Olembé		3°57'49.8"N 11°31'47.7"E	661 m
Yaounde		3°51'26.8"N 11°29'53.6"E	746 m
Koutaba	West	5°39'00.0"N 10°48'23.8"E	1190 m

TAXONOMY

Genus *Diaphorina* Löw, 1880

Diaphorina enderleini Klimaszewski, 1964

Figs 1–5

Gonanoplicus guttulatus Enderlein, 1910: 143.

Diaphorina enderleini: Klimaszewski 1964: 59 (replacement name for *Diaphorina guttulata* (Enderlein) nec Lethierry, 1890).

Diaphorina siluncula Loginova, 1978: 77 (synonymised by Burckhardt & Mifsud 1998: 29).

Description:

Adult. Described by Burckhardt and Mifsud (1998: 29, figs 48, 55, 56, 82). It is well-defined by its forewing shape and pattern as well as the apically-hooked paramere and the concave dorsal margin of the female proctiger.

Fifth instar larva (Figs 1–5).

Colouration. Sclerites dark brown; membrane beige. Eye reddish pink. Antenna yellow basally, dark brown in apical quarter. Wing pads with dark brown pattern.

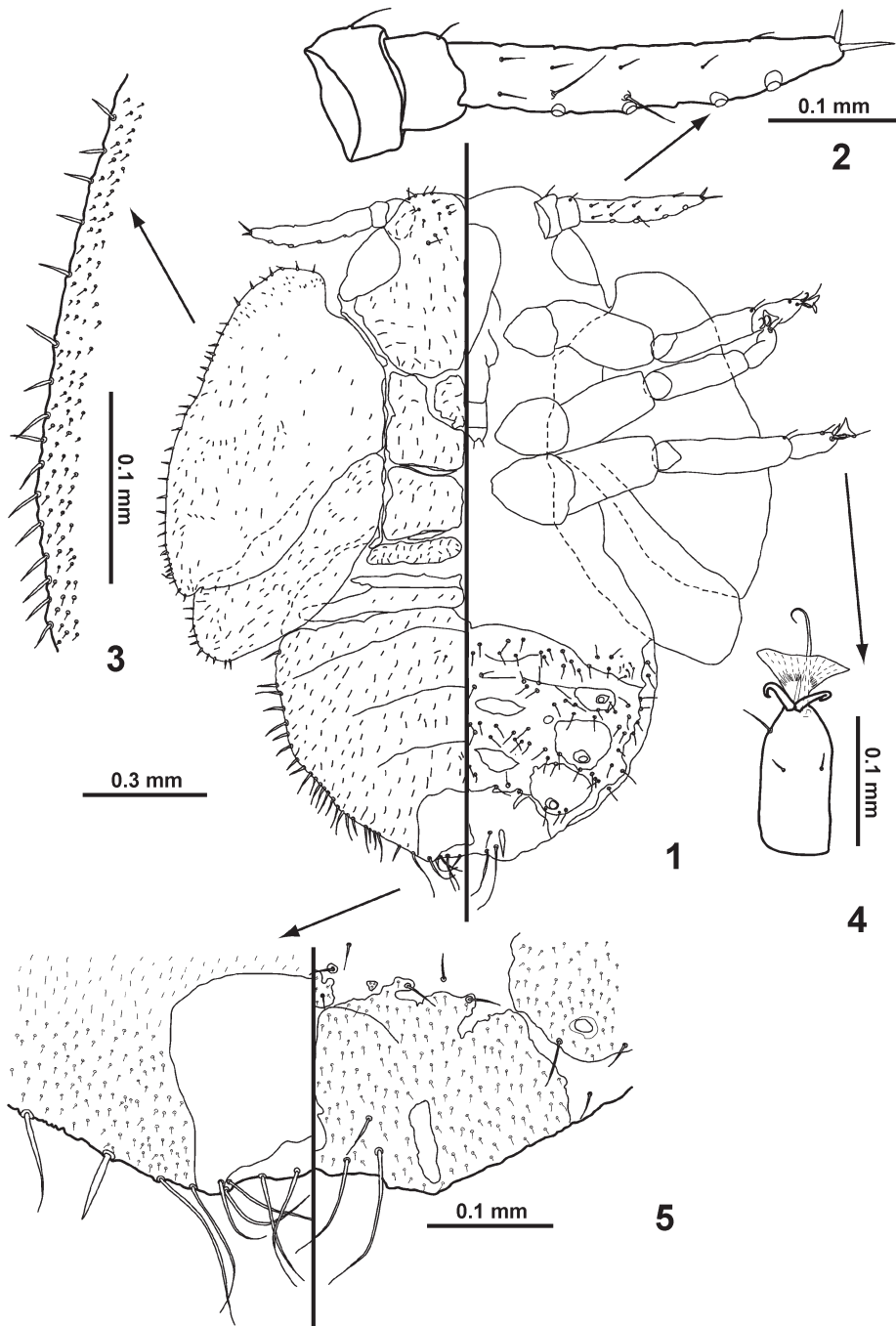
Morphology. Body almost as long as wide (Fig. 1). Antenna (Fig. 2) short, 3-segmented, segment 3 (flagellum) bearing 4 rhinaria, apex tapering with two terminal setae, one about 1.5× longer than the other. Dorsal sclerites large and forewing pads well sclerotised; dorsal and ventral sclerites covered in short setae. Forewing pad large and massive, with well-developed humeral lobe, outer margin (Fig. 3) bearing short slender lanceolate setae, posterior apex angled; dorsal surface covered in very short setae. Hindwing pad broad, apex almost rounded, margin and dorsal surface as in forewing pad. Tarsal arolium (Fig. 4) almost twice as long as claws, widened apically with a very short petiole. Caudal plate (Fig. 5) about 1.5× wider than long, rounded posteriorly, weakly indented at apex. Abdominal margin with slender lanceolate setae slightly longer than those on forewing pad margin, setae becoming longer towards apex. Abdominal venter sparsely covered in fairly long setae. Anus terminal, circumanal ring vestigial.

Measurements (in mm) and ratios (11 specimens): BL 1.38–1.75; BW 1.23–1.58; AL 0.30–0.38; FL 0.75–0.88; MTL 0.26–0.30; CL 0.53–0.68; CW 0.85–0.95; BL/BW 1.11–1.12.

Distribution. Cameroon, Ethiopia, Kenya, Sudan, Tanzania, Yemen.

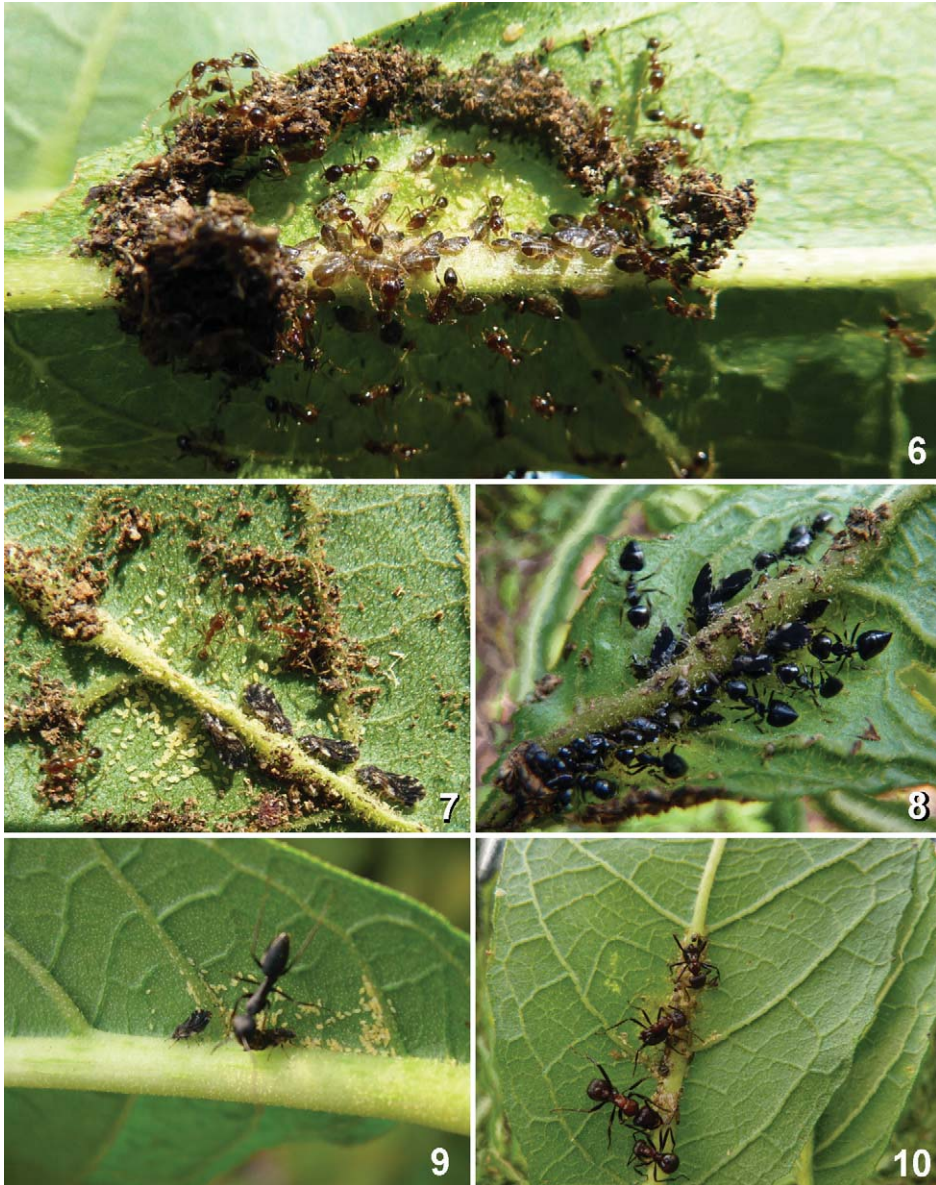
ANT-TENDING AND SHELTER-BUILDING BEHAVIOUR

During field studies of *Diaphorina enderleini* on *Vernonia amygdalina*, four ant species (Hymenoptera: Formicidae) widespread in the Afrotropical Region were



Figs 1–5. Fifth instar larva of *Diaphorina enderleini*: (1) habitus, dorsal surface left, ventral surface right; (2) detail of forewing pad, outer margin; (3) antenna; (4) tarsus with claws and tarsal arolium; (5) caudal plate, dorsal surface left, ventral surface right.

encountered with the psyllid colonies: *Pheidole megacephala* (Fabricius, 1793) at Yaounde, Nkolondon, Okola and Obala, *Camponotus acvapimensis* Mayr, 1862, at Olembé and Obala, *Crematogaster striatula* Emery, 1892, at Koutaba, and *Myrmicaria opaciventris* Emery, 1893, at Yaounde.



Figs 6–10. Ants attending *D. enderleini* on *V. amygdalina* leaves: (6) shelter enclosing psyllid larvae and *Pheidole megacephala* workers; (7) psyllid females and eggs with *P. megacephala* workers; (8) psyllid females and larvae with *Crematogaster striatula* workers and carton shelter's remains; (9) psyllid females and eggs with *Camponotus acvapimensis* workers; (10) psyllid larvae with *Myrmicaria opaciventris* workers.

Among these ants, a very unusual behaviour of *P. megacephala* and *C. striatula* was observed. While female psyllids are laying eggs on the lower leaf surface, workers of *P. megacephala* quickly pile up detritus combined with soil around and partly above the psyllids, resulting in a shelter-like structure (Figs 6, 7). Those of *C. striatula* build carton shelters (Fig. 8). During this procedure the adult female psyllids hardly move away from their eggs and larvae. The psyllid larvae are arranged in tight rows along the leaf veins, especially the principal one, and sometimes at the base of very young branches. The larvae are mostly sedentary and only move, slowly and steadily, when disturbed. They do not produce wax, as can be expected from the almost complete lack of the circumanal ring. Females and larvae excrete large drops of honeydew, which are immediately recovered by ants.

In *C. acvapimensis* and *M. opaciventris* the workers did not build any structure around the psyllids but they were observed taking honeydew from them (Figs 9, 10).

DAMAGE TO THE HOST

Adults and larvae of *Diaphorina enderleini* feed by sucking the plant sap. Feeding by the larvae is especially injurious due to their large number and their immobility (they feed at the same spot for a long time). A noticeable symptom is the appearance of translucent aureoles on the leaves, apparently resulting from the toxicity of the saliva injected by the psyllids.

DISCUSSION AND CONCLUSION

The larvae of *Diaphorina enderleini* share a series of morphological characters with other *Diaphorina* spp., such as the three-segmented antenna with four rhinaria on segment 3, the presence of a humeral lobe on the forewing pad and the marginal lanceolate setae on the wing pads and caudal plate. However, while a circumanal ring of wax-producing pores is well-developed in the larvae of the other known species of *Diaphorina* (Burckhardt 1985, 1986; Burckhardt & Mifsud 1998; Burckhardt & van Harten 2006), it is almost completely lacking in *D. enderleini*, and is not functional. In fact, the larvae do not produce wax. This habit probably exposes them to environmental constraints and natural enemies.

Among psyllids, different strategies for the protection of larvae are realised. In several free-living psyllids, such as *Mesohomotoma* and *Psylla* spp., the larvae are completely covered in abundant wax produced by wax glands which are connected to the circumanal ring and to additional pore fields on the caudal plate (Hodkinson 1974). In *Diclidoplebia xuani* Messi, 1998, and *Diclidoplebia harrisoni* Osisanya, 1969, the larvae covered in wax induce leaf roll galls in which they live (Burckhardt *et al.* 2006; Aléné *et al.* 2008). Many larvae of the Australian Spondylaspidini form lerps, i.e. protecting shields mostly composed of starch under which they live (Hollis 2004). The New World *Euphalerus* spp. associated with *Lonchocarpus* spp. live either in galls or under lerps (Hollis & Martin 1997), whereas many other taxa live in closed galls, such as the Afrotropical *Phytolyma* spp. on Moraceae (Hollis 1973), some Afrotropical *Pseudopharcopteron* spp. (Malenovský *et al.* 2007; Malenovský & Burckhardt 2009) or members of the South American *Calophya rubra* (Blanchard, 1852) group on *Schinus* spp. (Burckhardt & Basset 2000).

As the larvae of *D. enderleini* neither induce gall-like structures nor produce wax, they need an extrinsic protection which may be provided by the attendance of ants. The latter expect to be recompensed by honeydew excreted by the psyllids. Two ant species, *P. megacephala* and *C. striatula*, appear as good partners in this interaction since they build shelters to protect the psyllids from environmental constraints and natural enemies.

The shelter is probably also a means for the ants to protect the source of honeydew from competitors such as other hymenopterans and dipterans. Similar relationships are widely recorded in several groups of Sternorrhyncha and Auchenorrhyncha (Delabie 2001; Naskrecki & Nishid 2007; Verheggen *et al.* 2009) and a few groups of Heteroptera (Pfeiffer & Linsenmair 2000; Gibernau & Dejean 2001). There are very few records of this type of trophobiosis in psyllids (Novak 1994).

ACKNOWLEDGEMENTS

We are grateful to the farmers of all the collecting localities who allowed us to work in their gardens and the monks of the Koutaba Cistercian Monastery for facilities provided during the study in their site. We thank Estée Bochud (Thun) for the digital preparation of the drawings. We also thank Igor Malenovský (Brno) and an anonymous reviewer for providing useful comments on an earlier manuscript version. DCA is grateful for receiving a grant from Pro Entomologia, Basel, to work at the NHMB.

REFERENCES

- ALÉNÉ, D.C., DJIÉTO LONDON, C., BURCKHARDT, D. & MESSI, J. 2008. Population dynamics of the *Ricinodendron* psyllid, *Diclidophlebia xuani* (Hemiptera: Psyllidae), and of its predators in Southern Cameroon. *Mitteilungen der Schweizerischen Entomologischen Gesellschaft* **80**: 87–103.
- ANONYMOUS. 2005. Leafy vegetables: A treasure to be plucked. *Spore* **116**: 3.
- ASAWALAM, E.F. & HASSANALI, A. 2006. Constituents of the essential oil of *Vernonia amygdalina* as maize weevil protectants. *Tropical and Subtropical Agroecosystems* **6**: 95–102.
- BANJO, A.D., LAWAL, O.A. & AINA, S.A. 2006. Insects associated with some medicinal plants in South-Western Nigeria. *World Journal of Zoology* **1**: 40–53.
- BEN-DOV, Y. 2010. On new taxa and some described armoured scale insects (Hemiptera: Diaspididae) living in the galleries of the ant *Melissotarsus insularis* Santschi (Hymenoptera: Formicidae) in Madagascar. *Zootaxa* **2368**: 49–58.
- BONSI, M.L.K., OSUJI, P.O., TUAH, A.K. & UMUNNA, N.N. 1995. *Vernonia amygdalina* as a supplement to teff straw (*Eragrostis tef*) fed to Ethiopian Menz sheep. *Agroforestry Systems* **31**: 229–241.
- BOSCH, C.H., BORUS, D.J. & SIEMONSMA, J., eds. 2009. *Vegetables of Tropical Africa. Conclusions and recommendations based on PROTA 2: 'Vegetables'*. Wageningen: PROTA Foundation.
- BUCKLEY, R.C. 1987. Interactions involving plants, Homoptera, and ants. *Annual Review of Ecology and Systematics* **18**: 111–135.
- BURCKHARDT, D. 1985. The Mediterranean species of *Diaphorina* Loew (Homoptera: Psylloidea). *Phytophaga (Palermo)* **2**: 1–30.
- . 1986. Sternorrhyncha: Suborder Psylloidea of Saudi Arabia (Part 2). *Fauna of Saudi Arabia* **7**: 141–159.
- BURCKHARDT, D., ALÉNÉ, D.C., OUVARD, D., TAMESSE, J.L. & MESSI, J. 2006. Afrotropical members of the jumping plant-lice genus *Diclidophlebia* (Hemiptera: Psylloidea). *Invertebrate Systematics* **20**: 367–393.
- BURCKHARDT, D. & BASSET, Y. 2000. The jumping plant-lice (Hemiptera, Psylloidea) associated with *Schinus* (Anacardiaceae): systematics, biogeography and host plant relationships. *Journal of Natural History* **34**: 57–155.
- BURCKHARDT, D. & MIFSUD, D. 1998. Psylloidea (Insecta: Hemiptera) of the Arabian Peninsula. *Fauna of Arabia* **17**: 7–49.
- BURCKHARDT, D. & VAN HARTEN, A. 2006. Jumping plant lice (Insecta: Hemiptera: Psylloidea) of Yemen. *Fauna of Arabia* **21**: 189–216.
- CVPSL. 2003. Pratiques et Savoirs Locaux. *Bulletin trimestriel de liaison et d'information du Centre de Valorisation des Pratiques et Savoirs Locaux* **000**: 1–6.
- DAVIDSON, D.W., COOK, S.C., SNELLING, R.R. & CHUA, T.H. 2003. Explaining the abundance of ants in lowland tropical rainforest canopies. *Science* **300**: 969–972.

- DELABIE, J.H.C. 2001. Trophobiosis between Formicidae and Hemiptera (Sternorrhyncha and Auchenorrhyncha): An overview. *Neotropical Entomology* **30**: 501–516.
- EL HASSAN, S.M., KASSI, A.L., NEWBOLDA, C.J. & WALLACE, R.J. 2000. Chemical composition and degradation characteristics of foliage of some African multipurpose trees. *Animal Feed Science and Technology* **86**: 27–37.
- ENDERLEIN, G. 1910. 12. Hemiptera, 8. Psyllidae. In: Sjöstedt, Y., ed., *Wissenschaftliche Ergebnisse der schwedischen zoologischen Expedition nach dem Kilimandjaro, dem Meru und den umgebenden Massaissteppen Deutsch-Ostafrikas, 1905–1906*. Stockholm: P. Palmquist AB, pp. 137–144 + 1 pl.
- GIBERNAU, M. & DEJEAN, A. 2001. Ant protection of a heteropteran trophobiont against a parasitoid wasp. *Oecologia* **126**: 53–57.
- GROVER, C.D., DAYTON, K.C., MENKE, S.B. & HOLWAY, D.A. 2008. Effects of aphids on foliar foraging by Argentine ants and the resulting effects on other arthropods. *Ecological Entomology* **33**: 101–106.
- GULLAN, P.J. 2001. Why the taxon Homoptera does not exist. *Entomologica* **33**: 101–104.
- HECKROTH, H.P., FIALA, B., GULLAN, P.J., IDRIS, A.H.J. & MASCHWITZ, U. 1998. The soft scale (Coccidae) associates of Malaysian ant-plants. *Journal of Tropical Ecology* **14**: 427–443.
- HODKINSON, I.D. 1974. The biology of the Psylloidea (Homoptera): a review. *Bulletin of Entomological Research* **64**: 325–338.
- HOLLIS, D. 1973. African gall bugs of the genus *Phytozyma* (Hemiptera, Psylloidea). *Bulletin of Entomological Research* **63**: 143–154.
- 1976. Jumping plant lice of the tribe Ciriacremini (Homoptera: Psylloidea) in the Ethiopian Region. *Bulletin of the British Museum (Natural History), Entomology series* **34**: 3–83.
- 1984. Afrotropical jumping plant lice of the family Trioziidae (Homoptera: Psylloidea). *Bulletin of the British Museum (Natural History), Entomology series* **49**: 1–102.
- 1987. A new citrus-feeding psyllid from the Comoro Islands, with a review of the *Diaphorina amoena* species group (Homoptera). *Systematic Entomology* **12**: 47–61.
- 2004. *Australian Psylloidea: jumping plantlice and lerp insects*. Canberra: ABRS.
- HOLLIS, D. & MARTIN, J.H. 1997. Jumping plantlice (Insecta: Hemiptera) attacking *Lonchocarpus* species (Leguminosae), including 'Black Cabbage Bark', in Belize. *Journal of Natural History* **31**: 237–267.
- IDECHIL, O., MILLER, R.H., PIKE, K.S. & HANSEN, L.D. 2007. Aphids (Hemiptera: Aphididae), ants (Hymenoptera: Formicidae) and associated flora of Palau with comparisons to other Pacific Islands. *Micronesica* **39**: 141–170.
- JOHNSON, C., AGOSTI, D., DELABIE, J.H., DUMPERT, K., WILLIAMS, D.J., VON TSCHIRNHAUS, M. & MASCHWITZ, U. 2001. *Acropyga* and *Azteca* ants (Hymenoptera: Formicidae) with scale insects (Sternorrhyncha: Coccoidea): 20 million years of intimate symbiosis. *American Museum Novitates* **3335**: 1–21.
- KABEH, J.D. & JALINGO, M.G.D.S.S. 2007. Pesticidal effect of Bitter Leaf Plant *Vernonia amygdalina* (Compositae) leaves and Pirimiphos-methyl on larvae of *Callosobruchus maculatus* (Coleoptera: Bruchidae) and *Sitophilus zeamais* (Coleoptera: Curculionidae). *International Journal of Agriculture & Biology* **9**: 452–454.
- KAPLAN, I. & EUBANKS, M.D. 2005. Aphids alter the community-wide impact of fire ants. *Ecology* **86**: 1640–1649.
- KLIMASZEWSKI, S.M. 1964. Psyllidologische Notizen VIII–XI (Homoptera). *Annales zoologici* **22**: 57–67.
- LETHIERRY, L. 1890. Description of a new psyllid *Diaphorina guttulata* Lethierry. *Proceedings of the Royal Asiatic Society of Bengal* **1890**: 165.
- LOGINOVA, M.M. 1978. New species of psyllids (Homoptera: Psylloidea). *Transactions of the Zoological Institute of the USSR Academy of Sciences [Trudy Zoologicheskogo instituta Akademii nauk SSSR]* **61**: 30–123. (in Russian)
- MALENOVSKÝ, I. & BURCKHARDT, D. 2009. A review of the Afrotropical jumping plant-lice of the Phacopteronidae (Hemiptera:Psylloidea). *Zootaxa* **2086**: 1–74.
- MALENOVSKÝ, I., BURCKHARDT, D. & TAMESSE, J.L. 2007. Jumping plant-lice of the family Phacopteronidae (Hemiptera: Psylloidea) from Cameroon. *Journal of Natural History* **41**: 1875–1927.
- MEKONNEN, K., GLATZEL, G. & SIEGHARDT, M. 2009. Assessments of fodder values of 3 indigenous and 1 exotic woody plant species in the Highlands of Central Ethiopia. *Mountain Research and Development* **29**: 135–142.
- NASKRECKI, P. & NISHID, Q.K. 2007. Novel trophobiotic interactions in lantern bugs (Insecta: Auchenorrhyncha: Fulgoridae). *Journal of Natural History* **41**: 2397–2402.
- NIELSEN, C., AGRAWAL, A.A. & HAJEK, A.E. 2010. Ants defend aphids against lethal disease. *Biology Letters* **6**: 205–208.
- NOVAK, H. 1994. The influence of ant attendance on larval parasitism in hawthorn psyllids (Homoptera: Psyllidae). *Oecologia* **99**: 72–78.

- NZIGIDAHERA, B. 2008. Identification des espèces végétales autochtones domesticables d'intérêt médicinal et alimentaire en Commune Gitega. *Bulletin Scientifique de l'Institut National pour l'Environnement et la Conservation de la Nature* **5**: 11–17.
- OSSIANNILSSON, F. 1992. The Psylloidea (Homoptera) of Fennoscandia and Denmark. *Fauna Entomologica Scandinavia* **26**: 1–346.
- PFEIFFER, M. & LINSENAIR, K.E. 2000. Contributions to the life history of the Malaysian giant ant *Camponotus gigas* (Hymenoptera, Formicidae). *Insectes Sociaux* **47**: 123–132.
- SHIPPERS, R.R. 2000. *African indigenous vegetables. An overview of the cultivated species*. Wageningen: CTA, Natural Resource Institute.
- TABUTI, J.R.S. & LYE, K.A. 2009. Fodder plant for cattle in Kaliro District, Uganda. *African Study Monographs* **30**: 161–170.
- UEDA, S., QUEK, S.P., ITIOKA, T., INAMORI, K., SATO, Y., MURASE, K. & ITINO, T. 2008. An ancient tripartite symbiosis of plants, ants and scale insects. *Proceedings of the Royal Society of London* **275** (1649): 2319–2326.
- VERHEGGEN, F.J., DIEZ, L., DETRAIN, C. & HAUBRUGE, E. 2009. Mutualisme pucerons-fourmis: étude des bénéfices retirés par les colonies d'*Aphis fabae* en milieu extérieur. *Biotechnologie, Agronomie, Société et Environnement* **13**: 235–242.
- WAY, M.J. 1963. Mutualism between ants and honeydew-producing Homoptera. *Annual Review of Entomology* **8**: 307–344.