

## **Leehermania prorova, the Earliest Staphyliniform Beetle, from the Late Triassic of Virginia (Coleoptera: Staphylinidae)**

Authors: Chatzimanolis, Stylianos, Grimaldi, David A., Engel, Michael S., and Fraser, Nicholas C.

Source: American Museum Novitates, 2012(3761) : 1-28

Published By: American Museum of Natural History

URL: <https://doi.org/10.1206/3761.2>

---

BioOne Complete ([complete.BioOne.org](https://complete.BioOne.org)) is a full-text database of 200 subscribed and open-access titles in the biological, ecological, and environmental sciences published by nonprofit societies, associations, museums, institutions, and presses.

Your use of this PDF, the BioOne Complete website, and all posted and associated content indicates your acceptance of BioOne's Terms of Use, available at [www.bioone.org/terms-of-use](https://www.bioone.org/terms-of-use).

Usage of BioOne Complete content is strictly limited to personal, educational, and non - commercial use. Commercial inquiries or rights and permissions requests should be directed to the individual publisher as copyright holder.

---

BioOne sees sustainable scholarly publishing as an inherently collaborative enterprise connecting authors, nonprofit publishers, academic institutions, research libraries, and research funders in the common goal of maximizing access to critical research.

# AMERICAN MUSEUM NOVITATES

---

Number 3761, 28 pp.

October 18, 2012

---

## *Leehermania prorova*, the earliest staphyliniform beetle, from the Late Triassic of Virginia (Coleoptera: Staphylinidae)

STYLIANOS CHATZIMANOLIS,<sup>1</sup> DAVID A. GRIMALDI,<sup>2</sup>  
MICHAEL S. ENGEL,<sup>3</sup> AND NICHOLAS C. FRASER<sup>4</sup>

### ABSTRACT

The Staphylinidae contain over 57,000 described species, thus comprising one of the largest families in all Insecta. *Leehermania prorova* Chatzimanolis, Grimaldi, and Engel, new genus and species, is described, which is the earliest staphylinid and the oldest definitive polyphagan beetle. The new species is based on a series of well-preserved specimens from the early Norian to late Carnian-aged (Late Triassic) Cow Branch Formation of southern Virginia. It is considered to be subfamily incertae sedis within Staphylinidae, but its possible affinity with the tachyporine group of staphylinids is noted. A summary of all Mesozoic Staphylinidae is provided and the evolutionary history of the lineage briefly discussed.

### INTRODUCTION

With more than 360,000 described species, Coleoptera comprise the most diverse order in the 410 million year history of the Insecta. Their success is usually attributed to one hallmark

---

<sup>1</sup> Department of Biological and Environmental Sciences, Dept. 2653, the University of Tennessee at Chattanooga, 615 McCallie Ave., Chattanooga, Tennessee 37403.

<sup>2</sup> Division of Invertebrate Zoology (Entomology), American Museum of Natural History, Central Park West at 79th Street, New York, New York 10024-5192.

<sup>3</sup> Division of Invertebrate Zoology (Entomology), American Museum of Natural History; and Division of Entomology (Paleoentomology), Natural History Museum, and Department of Ecology & Evolutionary Biology, 1501 Crestline Drive – Suite 140, University of Kansas, Lawrence, Kansas 66045-2811.

<sup>4</sup> National Museum of Scotland, Chambers Street, Edinburgh, EH1 1JF, United Kingdom.

feature, which is the pair of elytra, or hardened forewings, that cover and protect the folded hind wings that are used in flight. Indeed, Coleoptera were apparently the first Holometabola to have invaded tight spaces like humus, soil, and wood, while retaining the fundamental adaptation of flight. Many of the morphological features defining the Coleoptera, in fact, are related to the “elytrization” of these insects, and collectively serve in working the insect through substrate (Lawrence and Newton, 1982; Grimaldi and Engel, 2005).

The earliest coleopteran relatives are species in the family Tshekardocoleidae from the Early Permian of Obora, Czech Republic, and Tshekarda, Russia (Rohdendorf, 1944; Ponomarenko, 1963; Kukalová, 1969), which are usually placed into the “Protocoleoptera” (Crawson, 1975; Grimaldi and Engel, 2005), an apparently paraphyletic stem group possessing primitive features like extensive venation on long, pointed, tegminous forewings. Some even possessed a sclerotized, external ovipositor, which all Mesozoic and Recent Coleoptera have lost. Roughly contemporaneous with these tshekardocoleids were also some of the earliest representatives of the “Archecoleoptera” (Lubkin and Engel, 2005; Beckemeyer and Engel, 2008), which still possessed wing veins, though reduced, along with the distinctive rows of square areolae on shorter, more typically rounded elytra. These “Archecoleoptera” became more dominant by the Late Permian (e.g., Martynov, 1932, 1937; Rohdendorf, 1944, 1961; Ponomarenko, 1963, 2000, 2003; Kukalová, 1969; Pinto, 1987; Geertsema and van der Heever, 1996). Béthoux (2009) redefined *Adiphlebia lacoana* Scudder from the Late Carboniferous Mazon Creek Lagerstätten as a stem coleopteran, presumably sister to all other Coleoptera, including the “Protocoleoptera” and “Archecoleoptera.” Under this scenario, Adiphlebioptera represents a stem group to the entire Coleopterida (= “Protocoleoptera,” “Archecoleoptera,” + Coleoptera s. s.), and could not be considered a true beetle without dramatically redefining the order. Recently, Meller et al. (2011) described four new “Protocoleoptera” beetles in the family Permosynidae from the Lunz Formation, Austria (Carnian, Late Triassic), along with the remains of an abdomen putatively belonging to a polyphagan beetle, but without a formal description of the species.

Evidence thus far indicates there was a dramatic change in the coleopteran faunas from the Late Permian to the Triassic. This is attributable to the End Permian Event (EPE) 247 Mya (Erwin, 1993; Bowring et al., 1999), though the stratigraphic sampling is incomplete since fossil insects (including beetles) are essentially lacking from the earliest parts of the Triassic (Induan-Olenekian: 247–241 Mya). Yet the approximately 10 million years after the EPE is evolutionarily a brief interval of time for Coleoptera and many insect groups, since insects in Miocene amber typically reveal very little change from modern ones (Grimaldi and Engel, 2005). Thus, the faunal turnover from the Late Permian to the mid- and Late Triassic probably reflects not sampling bias but a major biotic event (Knoll et al., 1996; Berner, 2002; Huey and Ward, 2005).

The earliest true Coleoptera were diverse by the Anisian (240 Mya), as revealed by 32 “species” or morphotypes, sorted from 584 specimens of primarily elytra in the Grès à Voltzia Formation of the Vosges mountains of northeastern France (Papier et al., 2005). These authors did not propose family classifications for the Grès à Voltzia beetles, stating (as we believe) that “without any visible venation, [it] therefore prevent[s] any systematic study and determination

of their affinities” (Papier et al., 2005: 182). The Madygen Formation (Ladinian-Carnian: 236–220 Mya) from the Fergana Valley, straddling Uzbekistan, Kyrgyzstan, and Tajikistan, has yielded the greatest Triassic diversity: some 65 species assigned to nine families (sorted from 3500 specimens) (Ponomarenko, 1969, 1977, 1995). Coleoptera are scattered amid deposits from the Meride limestone in southern Switzerland and northern Italy (Ladinian: 234 Mya); the Keuper Basin (Norian: 222–209 Ma: Brauckmann and Schlüter, 1993); the Argilliti di Riva di Solto Formation near Bergamo, Italy (Rhaetian: 209 Mya: Whalley, 1986; Bechly, 1997), from deposits of similar age in Britain; and throughout central Asia and Asia Minor (i.e., Tolgoy and Protopivskya Formations: Carnian to Rhaetian). In eastern Asia (including Japan), Triassic Coleoptera predominate in deposits from the Ladinian to the Rhaetian (Lin, 1983, 1986, 1992; Lin and Mou, 1989; Fujiyama, 1973). Two very rich southern deposits harbor diverse Coleoptera, which are the Carnian-aged Ipswich series in Queensland, Australia (e.g., Dunstan, 1923; Riek, 1955), and deposits of similar age in the Molteno beds of South Africa (e.g., Riek, 1974, 1976). Scattered Coleoptera are reported in Late Triassic deposits from South America (e.g., Martins-Neto et al., 2006, 2007, 2008), and other than the Cow Branch Formation fauna (herein, and Grimaldi and Fraser, unpubl. data), the North American fauna of Triassic insects has been extremely depauperate.

In this paper we describe the oldest known staphyliniform beetle, specifically belonging to the family Staphylinidae, from the Late Triassic Cow Branch Formation, and discuss its evolutionary implications. Material examined is deposited in the Virginia Museum of Natural History, Martinsville, Virginia (VMNH), and the Yale Peabody Museum of Natural History, Yale University, New Haven, Connecticut (YPM).

## GEOLOGICAL SETTING AND PRESERVATION

The deposit is in the Jurassic-Triassic system of rift basins that belong to the Newark Supergroup, which lie along the eastern coast of North America (Olsen, 1986; Olsen et al., 1978, 1991). Insects occur sporadically within Newark supergroup outcrops from Massachusetts to North Carolina (Huber et al., 2003), but only certain outcrops of the Carnian/early Norian-aged Cow Branch Formation consistently yield abundant, diverse, and well-preserved insects and plants (Fraser et al., 1996; Fraser and Grimaldi, 2003). The Cow Branch Formation correlates with the Chinle Formation of the southwestern United States (Olsen et al., 1978; Fraser et al., 1996), and paleomagnetic data as well as the fishes and phytosaurs provide a strong correlation with the Lockatong Formation of Pennsylvania, New Jersey, and New York (Ladinian-Norian: 237–207 Ma) (Olsen and Kent, 1996; Olsen et al., 1996). An abundant, amphibious eosuchian in the Cow Branch, *Tanytrachelos* Olsen, is closely related to mid-Triassic forms from Europe, such as *Tanystropheus* Meyer (Olsen et al., 1978; Fraser et al., 1996).

The main insect-bearing outcrops of the Cow Branch Formation are in quarries of the former Solite Corporation near Cascade, Virginia. These outcrops expose over 30 Van Houten cycles, one of which is particularly fossiliferous (Fraser et al., 1996). The insects occur in a

one-inch-thick layer of very fine-grained, black, microlaminated lacustrine shale, which lies between thick silt layers. It was from this cycle that Olsen et al. (1978) originally reported insects. Taphonomy of the insects is unique because entire specimens are routinely preserved, not just the dissociated wings that are the primary insect remains for the Triassic. Also, the insects and plants are preserved as silvery films of aluminosilicates, the detail in which for insects includes microtrichia on appendages and wings and facets in eyes. Optimal observation of the insects, though, requires either polarized light filters or an intense, diffuse, nondirectional light source such as a fiber optic ring light. Wetting the specimens with ethanol increases the contrast between the fossilized remains and matrix. Specimens can also be examined using scanning electron microscopy, either in backscatter or secondary electron mode, and obviously uncoated (an environmental SEM is not necessary). Here, we used a Hitachi S-4700 field emission SEM and Zeiss Evo-60 variable pressure SEM at 10 kV, which gave good to reasonable results on just two of the four specimens examined, particularly specimen VMNH 1343. There appears to be little correlation between specimen quality as observed using the visible light spectrum, and quality of the electron signal and image using SEM. For example, specimen YPM 1147 has excellent preservation under the stereomicroscope, and despite repeated attempts to image mouthparts, legs, and antennae, there was virtually no signal using the SEM.

Taxonomic papers on other arthropods from this deposit include ones on the oldest araneoid spiders (Selden et al., 1999), the earliest definitive thrips (order Thysanoptera) (Grimaldi et al., 2004), the first Western Hemisphere record of the Mesozoic mecopteridan family Pseudopolycentropodidae (Grimaldi et al., 2005), a cockroach (order Blattaria) (Vršanský, 2003), and a diverse fauna of early Diptera (Blagoderov et al., 2007). Other orders in the Cow Branch Formation besides these and the Coleoptera are Hemiptera, Orthoptera, and Plecoptera (Fraser et al., 1996; Grimaldi, unpubl. data). Autochthonous taxa in the deposit are primarily the waterbugs (Belostomatidae and other Nepomorpha [Hemiptera]), making this one of the earliest aquatic insect faunas (Sinitshenkova, 2002; Grimaldi and Engel, 2005). All the other insects, though, and probably all of the plants are allochthonous. Plants include bennettitaleans, cycads, ferns, ginkophytes, and most commonly, conifers. Most insects preserved in the Cow Branch Formation were probably living amid the vegetation that bordered an ancient lake.

## SYSTEMATIC PLACEMENT

### PLACEMENT WITHIN COLEOPTERA

A distinctive feature of the family Staphylinidae is the truncated elytra, which occur sporadically in other families but which are distinguishable by the proportions of the elytra and abdomen, and overall body shape. Other families with truncated elytra include the Nitidulidae (especially carophilines), Histeridae, Silphidae, and Melyridae, but these have truncated elytra with only three to four abdominal segments exposed (Staphylinidae typically have six abdominal segments exposed) and the bodies tend to be much broader, flatter, and not at all fusiform. Another key synapomorphy of Staphylinidae (contiguous procoxae) is not visible in the Solite specimens, since none of the specimens have the ventral body surface exposed (all are just dorsal or lateral in preservation).



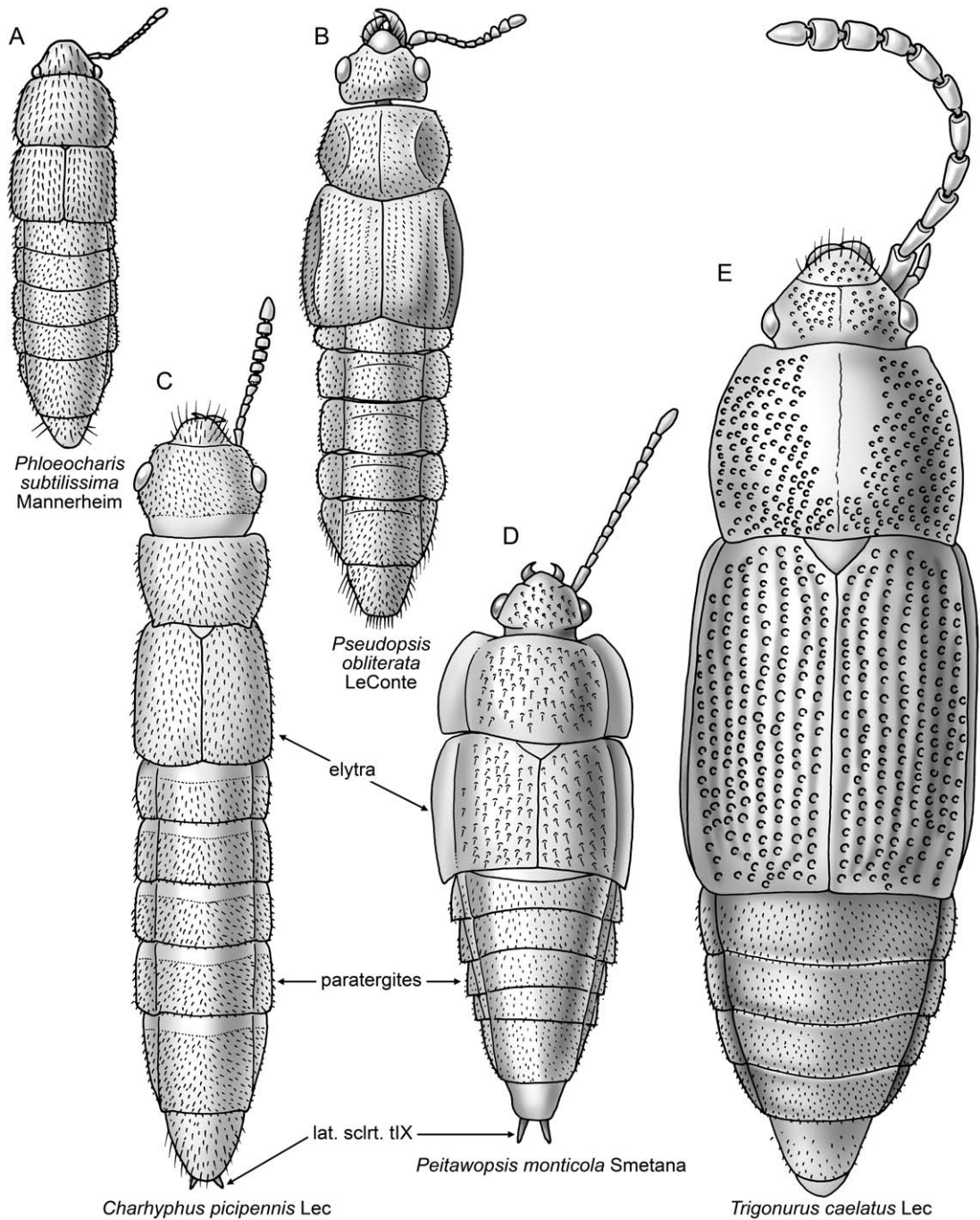


FIGURE 1. Dorsal habitus (without legs) of exemplar Staphylinidae, with labels for structures referred to in the text. A. Phloeocharinae. B. Pseudopsinae. C. Trichophyinae. D. Tachyporinae. E. Trigonurinae. All to the same scale. Original. Abbreviations: **lat sclrt. tIX**, lateral tergal sclerites of abdominal segment IX.

## PLACEMENT WITHIN STAPHYLINIDAE

The placement of this taxon within Staphylinidae is challenging for two reasons: (1) several key morphological features are not preserved (e.g., mouthparts, legs, clear ventral view), and (2) because the phylogenetic relationships of the family are not well understood. Thayer (2005) and Newton (2011) provided a summary phylogeny for the family, but several subfamilies or groups within Staphylinidae are not defined based on synapomorphies. Within Staphylinidae there are four major, presumably monophyletic, informal groups: the Omaliine group, Tachyporine group, Oxyteline group, and Staphylinine group (refer to Thayer, 2005, for more details). Based on the overall body habitus and certain characteristics—antennal insertions exposed, antennae inserted anterior to the eyes, retractable head without distinct neck, and six visible abdominal segments—the taxon newly described herein appears to be a stem group of the Tachyporine group (and thereby more closely related to the subfamily Tachyporinae). However, as stated by several authors (Ashe, 2005; Thayer, 2005), Tachyporinae is probably a group of convenience rather than a monophyletic lineage, and thus there is little point in trying to place this taxon within this assemblage based on specific synapomorphies. Besides the subfamily Tachyporinae, the Tachyporine group includes the subfamilies Aleocharinae, Habrocerinae, Phloeocharinae, Olisthaerinae, and Trichophyinae (Ashe, 2005). Even though characters that would definitely exclude *Leehermania* from Aleocharinae are not visible (e.g., shape of aedeagal parameres, mouthparts), *Leehermania* appears not to belong in Aleocharinae because the posterolateral margins of the elytra are not sinuate (smooth in *Leehermania*) and the antennae are inserted anterior to the compound eyes and not into the vertex between the compound eyes as in most aleocharines. Habrocerinae + Trichophyinae have verticillate antennae that are lacking from *Leehermania*. Lastly, *Leehermania* does not belong in Phloeocharinae because the antennal insertions are not concealed from above (visible in *Leehermania*; fig. 2A, B) or in Olisthaerinae based on the overall shape of the body and because *Leehermania* lacks a pronotal postcoxal process.

Excluding the Tachyporine group, the only other remote membership possibilities for *Leehermania* (based on the habitus) are the subfamilies Trigonurinae, Osoriinae, or Omaliinae. However, these placements seem unlikely for the following reasons: the elytra do not have striae as in the subfamily Trigonurinae (this is not an apomorphy for Trigonurinae but rather for the clade Trigonurinae + Apateticinae: Thayer, 2005); also, the sternites and tergites are not fused but rather separated, unlike the Osoriinae. Finally, *Leehermania* does not possess ocelli, and thus does not seem to belong to Omaliinae (although there are several Omaliinae without ocelli: Thayer, 2005), and because omaliines typically have a much broader shape than seen here.

## SYSTEMATIC PALEONTOLOGY

Order COLEOPTERA Linnaeus, 1758

Suborder POLYPHAGA Emery, 1886

Family STAPHYLINIDAE Latreille, 1802

Subfamily incertae sedis

*Leehermania* Chatzimanolis, Grimaldi, and Engel, new genusTYPE SPECIES: *Leehermania prorova* Chatzimanolis, Grimaldi, and Engel, new species.

**DIAGNOSIS:** Body sublumiloid, with dorsum of body (especially elytra and pronotum, portions of head and apical tergites of abdomen) with dense vestiture of microsetae. Head prognathous and retractile to compound eye level (as evident in several specimens, e.g., figs. 2, 4, 6); antenna with 11 antennomeres, with narrow antennomeres and slight terminal club; antennal insertions visible from above; neck absent. Pronotum rectangular, with slightly sinuous posterior margin. Elytra rectangular, apical margin flat to slightly convex; elytra long, length  $2\times$  length of pronotum, slightly less than  $0.3\times$  length of body. Abdomen with six visible segments, tapered apicad to narrow, forked terminal segment (lateral tergal sclerites of abdominal segment IX visible), with sparse stiff macrosetae (fig. 2B); with no paratergites (figs. 2, 4, 5, 6), but tergites and sternites not fused (fig. 8B) (as in most Osoriinae).

**ETYMOLOGY:** The new genus group name honors Lee Herman, coleopterist at the American Museum of Natural History and world's authority on the Staphylinidae, for his achievements, his expert assistance, and in appreciation of his friendship. The name is feminine.

*Leehermania prorova* Chatzimanolis, Grimaldi, and Engel, new species

Figures 2–9

**DIAGNOSIS:** As for the genus (see above).

**DESCRIPTION:** Body sublumiloid in shape, with lateral margins of pronotum and elytra nearly parallel (slightly wider near middle of elytra), but with abdomen tapered to apical point. Body length (anterior margin of head to apex of abdomen) 2.1–3.1 mm (mean 2.5 mm). Vertex of head, pronotum, entire surface of elytra, and portions of abdominal tergites covered with dense vestiture of long, decumbent microsetae. No color patterns apparent [color patterns are preserved in some other beetles from the Cow Branch Formation]. **Head:** Prognathous; nearly hemispherical in shape but with anterior end slightly narrowed; mandibles pointed. Antennae widely separated, insertions anterior to compound eyes, distance between insertions approximately equal to distance between inner margins of compound eyes; antenna short, length approximately equal to width of head, with sparse macrosetae (e.g., fig. 7); antennomeres 1–8 longer than wide; antennomere 1 (scape) enlarged (fig. 2B); apical three antennomeres slightly thickened into apical club; antenna with at least basal antennomeres having fine setae on anterior surface (few, if any, occur on the posterior surface). Compound eyes of moderate size, greatest diameter approximately one-third length of head (fig. 9B). **Thorax:** Pronotum large, rectangular; anterior margin slightly concave, lateral margins slightly convex, posterior margin slightly sinuate; width  $1.6\times$  length; anterolateral angles acute; pronotum slightly wider than head, slightly thinner than greatest width of elytra, with no visible postcoxal process; microsetae near central disk of pronotum pointed toward longitudinal midline, those on lateral sides of pronotum and on elytra pointed posteriad. Elytra long, length approximately  $0.31\times$  body length,  $2.3\times$  elytron width; lateral margins slightly convex, posterior margins flat to slightly convex. Small, triangular mesoscutellum visible (figs. 2, 6), with microsetae. Legs not clearly visible but in YPM 1147 (fig. 8) with pro-, meso-, and metafemora stout, width ca.  $0.5\times$  that of length, tibiae and tarsi thinner; pro- and mesotarsi appearing pentamerous. **Abdomen:** Tapered to narrow apex; apical segment forked, composed of lateral tergal sclerites of segment



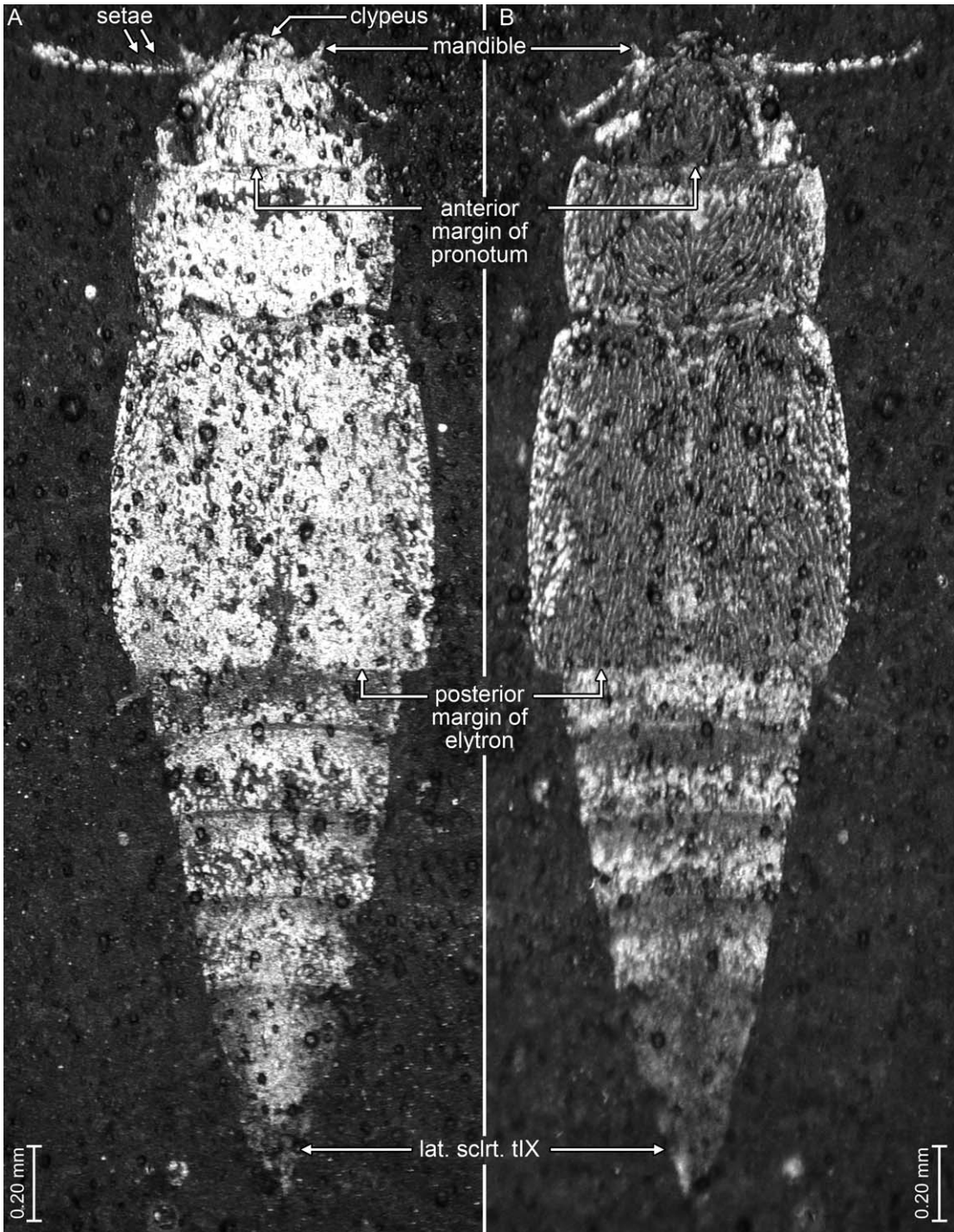


FIGURE 2. Photomicrographs of holotype (VMNH 734) of *Leehermania prorova*, gen. et sp. n., showing dorsal surface. A. Part (VMNH 734a). B. Counterpart (VMNH 734b).

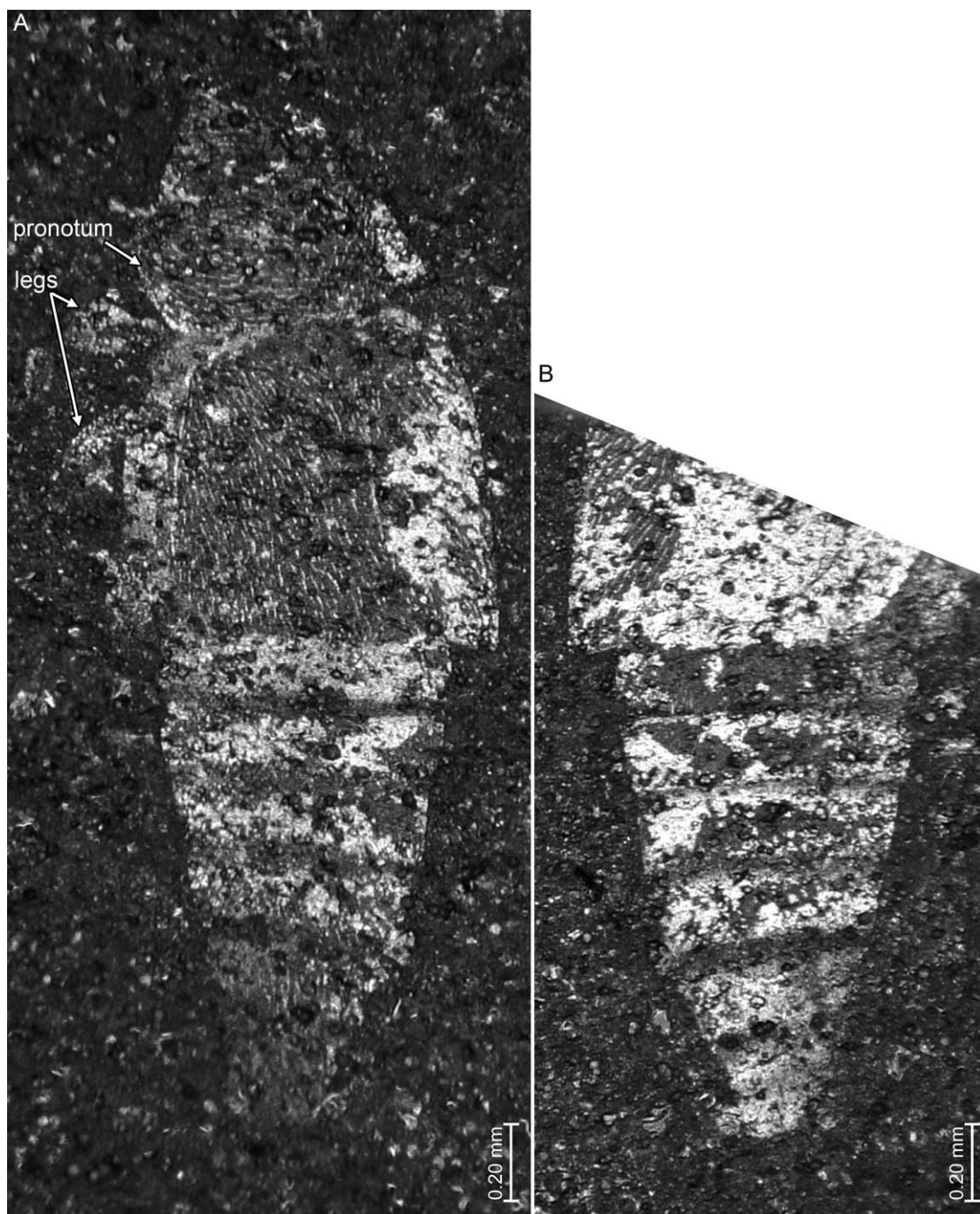


FIGURE 3. Photomicrographs of paratype (VMNH 1233) of *Leehermania prorova*, gen. et sp. n., showing dorsal surface. **A.** Part (VMNH 1233a). **B.** Partial counterpart of posterior half (VMNH 1233b).



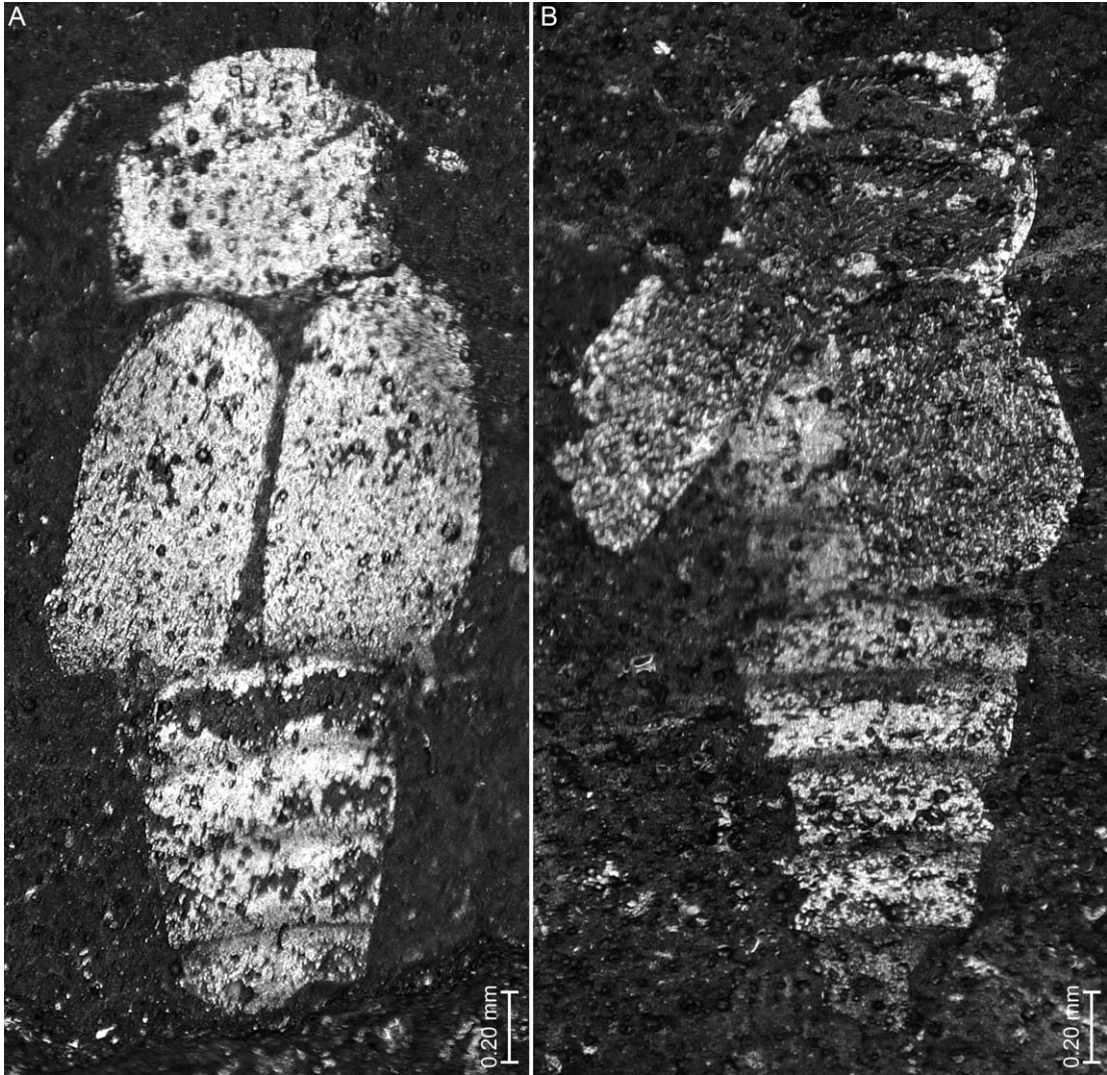


FIGURE 4. Photomicrographs of paratypes of *Leehermania prorova*, gen. et sp. n., both showing dorsal surfaces. A. VMNH 1446. B. VMNH FN 442, its left elytron is slightly extended away from body.

IX (i.e., VMNH 1343, figs. 5, 7); six tergites (III–VII) and lateral tergal sclerites of abdominal segment IX visible; tergite VII (5th exposed segment) apparently with fine, irregular striae; lateral tergal sclerites of IX becoming tapered to narrow apex; exposed portion of abdomen  $0.44\times$  body length; apex of abdomen with sparse, stiff macrosetae at least on lateral margins and near apex of lateral sclerites of segments IX.

HOLOTYPE: VMNH 734a, b [part and counterpart], sex unknown, from Virginia: Cascade (near Martinsville), Solite Corporation Quarries, Cow Branch Formation (late Carnian–early Norian: Late Triassic); deposited in the Virginia Museum of Natural History, Martinsville.

PARATYPES: (Same locality) VMNH 1233 a, b; VMNH 1343a, b; VMNH 1446; VMNH 1997-174; VMNH FN 442; YPM 1147a, b; YPM 36447; VMNH 2986, VMNH 2805, VMNH 3099.

ADDITIONAL MATERIAL: The following specimens (from the same locality) are not included in the type series due to their incomplete preservation: VMNH C-1; VMNH C-2; VMNH C-3a, b; VMNH C-4a, b; VMNH C-5a, b; VMNH C-6a, b; VMNH C-7a, b; VMNH 1278; VMNH 1341a, b.

ETYMOLOGY: The specific epithet is derived from the words *pro-* (shortened from Greek *prōtos*, “first”) and *-rova*, deriving from the common name of staphylinid (“rove”) beetles.

COMPARISONS AND NOTES: Some specimens (e.g., VMNH 1446, VMNH 1343) appear significantly broader, which is a common taphonomic distortion in Cow Branch specimens, wherein the insect is stretched in one axis. Below we compare *Leehermania* with other Mesozoic Staphylinidae that are possibly related. The first Triassic staphylinid to be reported is a slightly younger specimen also from a Newark supergroup deposit (Gore, 1988). That specimen (NMNH no. 388367) is from the Groveton Section of Culpepper Basin in northern Virginia, which is of Norian age. It was examined by one of us (D.A.G.), and while the body proportions agree with that of *Leehermania*, the coarse grain of the matrix precludes the observation of any details.

Among diverse species of staphylinids described from the Karabastau Formation (Kimmeridgian: Late Jurassic, 155.7–150.8 Mya) of Karatau, Kazakhstan (Tikhomirova, 1968), several resemble *Leehermania*, including the genera *Abolescus* Tikhomirova, *Abcondus* Tikhomirova, *Archodromus* Tikhomirova, *Mesotachinus* Tikhomirova, and *Tachyporoides* Tikhomirova. Tikhomirova (1968) placed the genera *Abolescus* and *Abcondus* in Piestinae, but she used an outdated definition of the subfamily and the taxon should probably be moved to a different oxyteline-group subfamily, while *Archodromus* was placed in Omaliinae. The remaining two taxa (*Mesotachinus* and *Tachyporoides*) were placed in Tachyporinae. *Leehermania* can be distinguished easily from all these genera because it lacks paratergites (present in all others). *Tachyporoides* also has dense microsetae on the elytra, but not on the head or pronotum (as in *Leehermania*), whereas *Mesotachinus* has series of macrosetae on the posterior abdominal segments (*Leehermania* has just a few such setae). *Leehermania* can be distinguished from the species of *Hesterniasca* Zhang, Wang, and Xu (Zhang et al., 1992; Cai et al., 2011; Late Hauterivian–Early Barremian: Early Cretaceous, 132–112 Mya) based on the presence of paratergites in the latter and the dimensions of the pronotum (in *Hesterniasca* the pronotum is much wider than the elytra). Yue et al. (2009a) described *Glabrimycetoporus amoenus* from the Yixian Formation (Late Hauterivian–Early Barremian: Early Cretaceous, 132–112 Mya) and placed it in Tachyporinae and provisionally in Mycetoporini. *Leehermania* differs in the lack of paratergites, the relative proportions of elytra to pronotum (elytra are 1.4× the length of the pronotum in *Glabrimycetoporus* and 2× in *Leehermania*) and the general shape of the abdomen. Gusarov (2000) described *Mesotachyporus puer* from New Jersey amber (Turonian: Late Cretaceous, 93.5– 89.3 Mya), which is similar to *Leehermania* in that it lacks paratergites. However, this species has a glabrous pronotum that is narrowed anteriorly, and long macrosetae on the last





FIGURE 5. Photomicrograph of paratype (VMNH 1343) of *Leehermania prorova*, gen. et sp. n., showing dorsal surface. The specimen is broader than others because of taphonomic distortion. This specimen was imaged also using secondary electron SEM (fig. 7). Part VMNH 1343a.



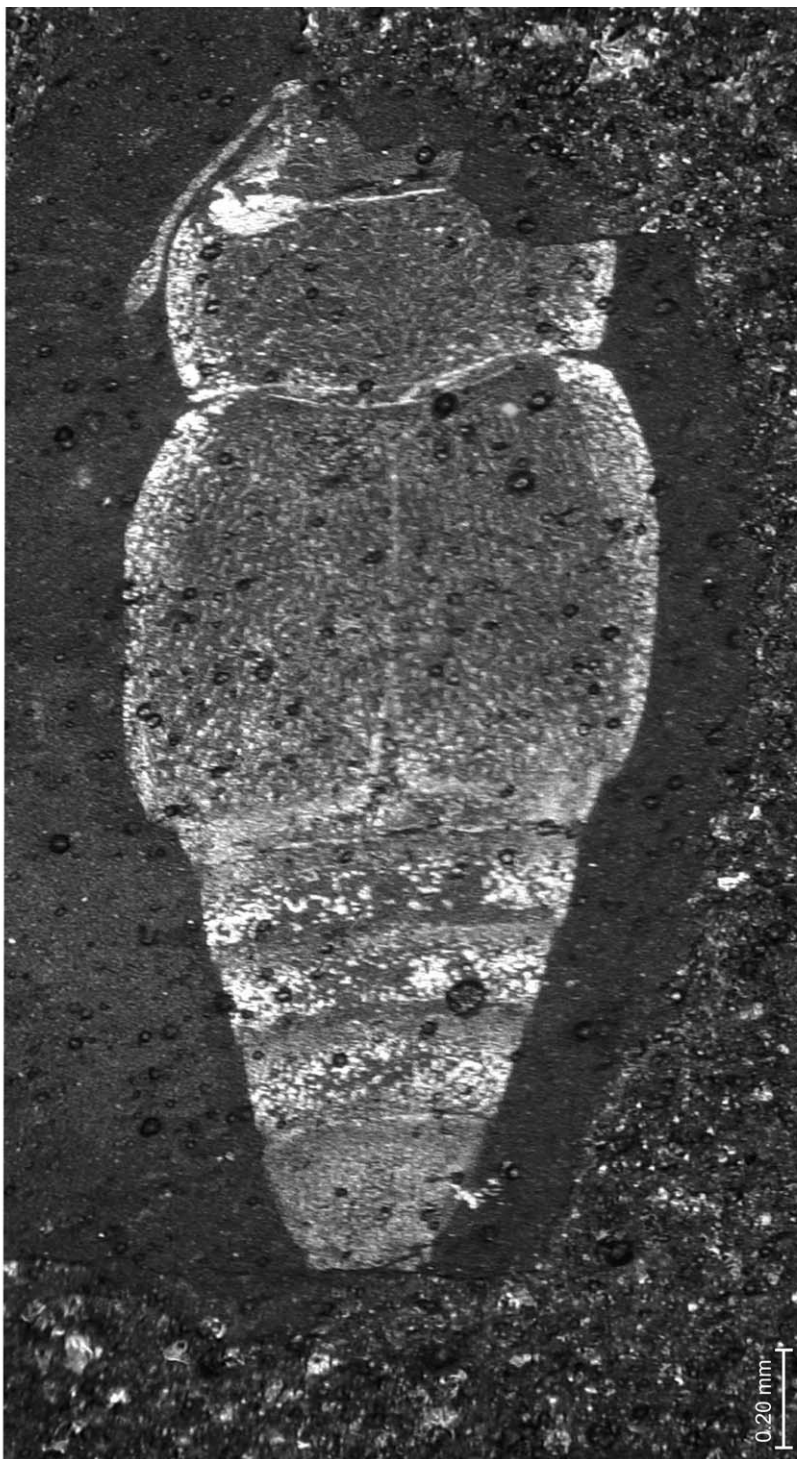


FIGURE 6. Photomicrograph of paratype of *Leehermania prorova*, gen. et sp. n., counterpart of VMNH 1343b.

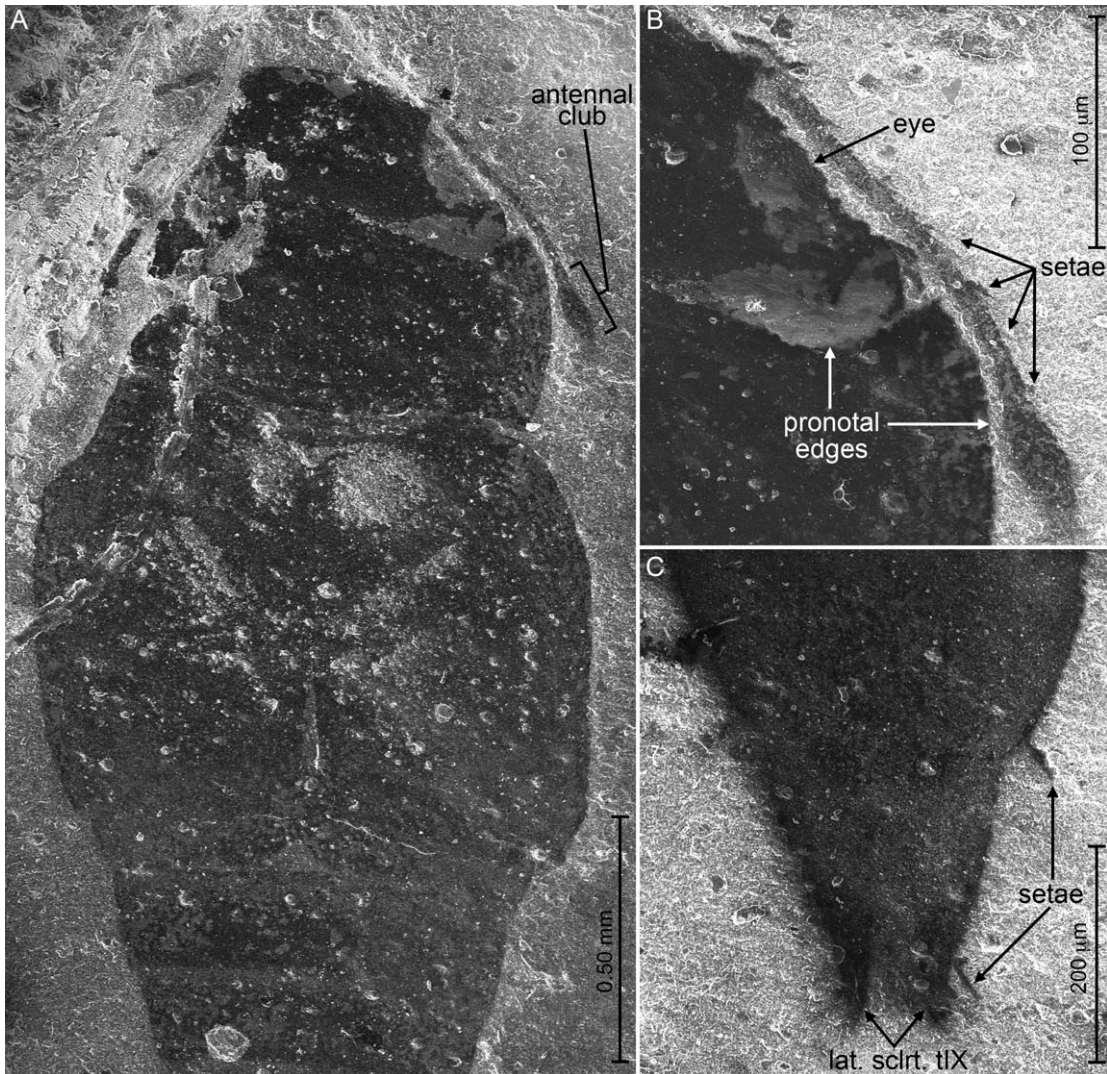


FIGURE 7. Scanning electron micrographs (secondary electron images) of VMNH 1343a. **A.** Anterior portion of body (original magnification 20 $\times$ ). **B.** Detail of head, showing some antennal segmentation and setation (original magnification 200 $\times$ ). **C.** Detail of posterior end, showing lateral tergal sclerites of abdominal segment IX (lat. sclrt. tIX) and scattered stiff setae (original magnification 70 $\times$ ).

abdominal segments. *Leehermania* is also morphologically distinct from *Undiatina pilosa* Ryvkin, 1990, *Cuneocharis elongatus* Ryvkin, 1990, and *Ryvkinius gracilis* (Ryvkin, 1990), described originally under the preoccupied name *Mesoporus* Ryvkin, 1990, all placed in Tachyporinae and described from Unda and Daya, Russia, of Early Cretaceous age, 145.5–130 Mya. *Undiatina*, *Cuneocharis*, and *Ryvkinius* have paratergites and their head is conical whereas it is hemispherical in *Leehermania*.



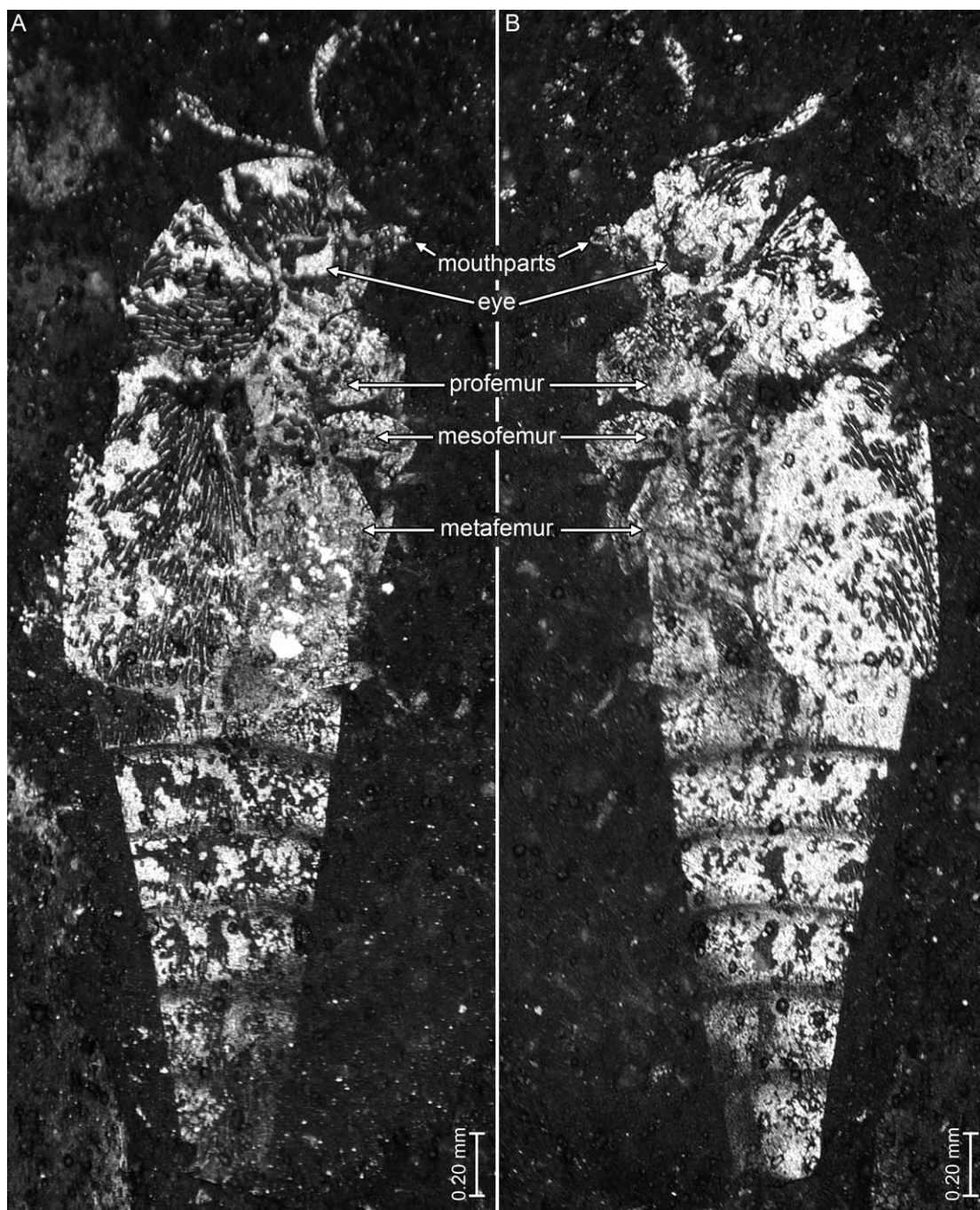


FIGURE 8. Photomicrographs of paratype (YPM 1147) of *Leehermania prorova*, gen. et sp. n., lying in lateral view. A. Part, YPM 1147a. B. Counterpart, YPM 1147b.

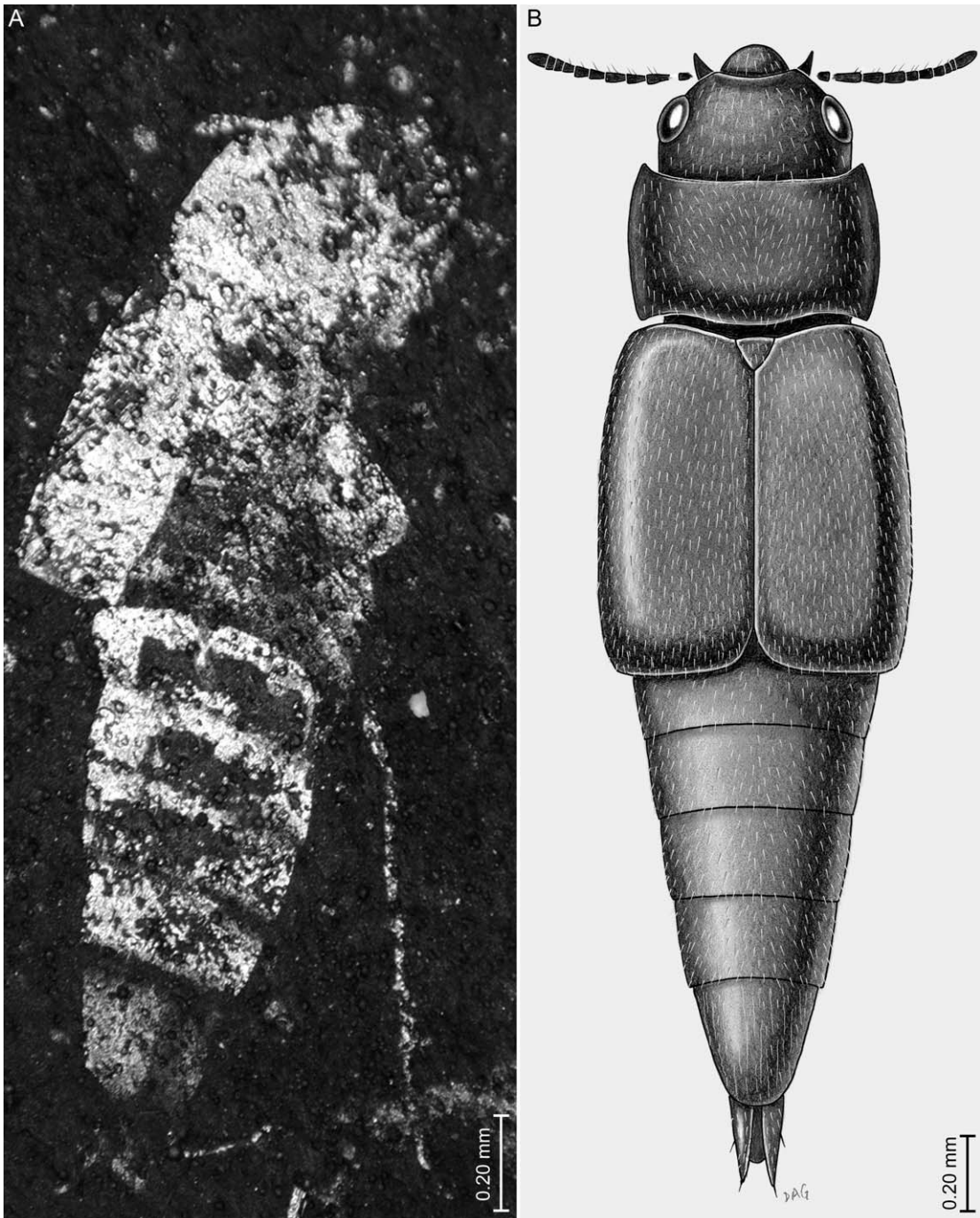


FIGURE 9. A. Photomicrograph of paratype, YPM 36447, exposed in a ventrolateral position; its right elytron is slightly lifted away from the body. B. Reconstruction of *Leehermania prorova*, gen. et sp. n., based largely on the holotype (VMNH 734) and paratype VMNH 1343.



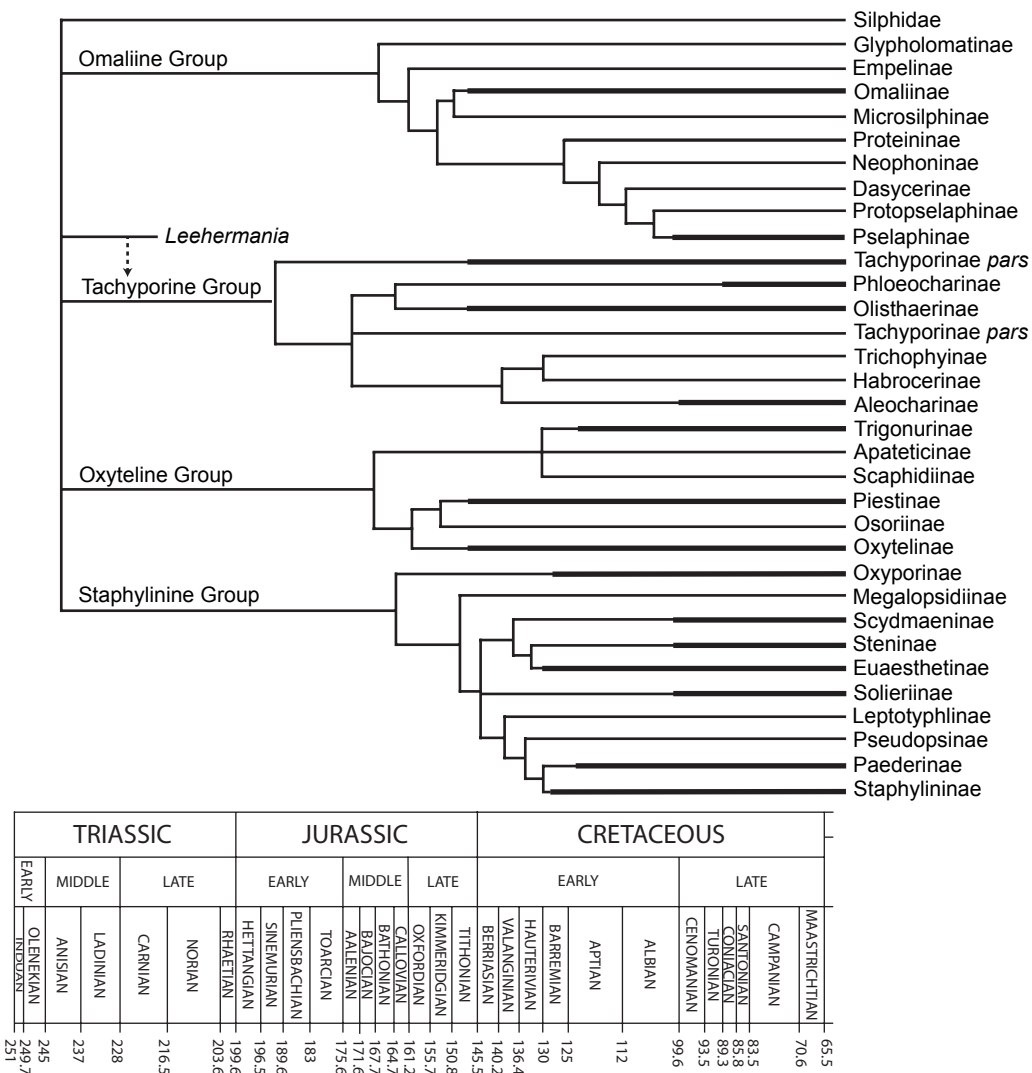


FIGURE 10. Phylogenetic schema of Staphylinidae s.l. after Newton (2011), with placement of *Leehermania* indicated and Mesozoic ranges of subfamilies highlighted based on records summarized in table 1 and personal observations of Pselaphinae and Aleocharinae in Burmese amber, Phloeocarinae in New Jersey amber, and Paederinae in the Crato Formation of Brazil.

### DISCUSSION

Based on the morphological characters provided above, *L. prorova* can be placed confidently within Staphylinidae (contra Yue et al., 2010), although it remains unclear whether *Leehermania* is representative of a stem group to the tachyporine lineage or should be placed within one of the existing subfamilies. Regardless, *L. prorova* is the oldest species of the family Staphylinidae, itself numbering more than 57,000 described species today (Herman, 2001b;



A.F. Newton, unpubl. database). Given this Recent diversity, the existence of only one species of Staphylinidae in the Cow Branch Formation contrasts dramatically with that of the order Diptera preserved in this same deposit (Blagoderov et al., 2007).

The Mesozoic record of Staphylinidae is in need of considerable revision, particularly the types of taxa such as *Mesostaphylinus*, *Laostaphylinus*, and Tikhomirova's and Ryvkin's material (observations by one of us [D.A.G.] of Tikhomirova's type material revealed a significant number of inaccuracies in the descriptions). Nonetheless, the available material does shed some light onto the historical diversity of the family. By the Late Jurassic several species of recognizable subfamilies, such as Scaphidiinae, Omaliinae, Tachyporinae, Olisthaerinae, Oxytelinae, and Piestinae, were present in the fauna and, given the phylogenetic placement of these groups, it suggests that a great deal of the higher diversification of Staphylinidae had already taken place (fig. 10). Certainly, the Jurassic staphylinid fauna remains to be better explored and revised (e.g., Cai and Huang, 2010), but the insights currently available support an early diversification of the family into the major "Group" lineages by the Late Triassic. Clarke and Chatzimanolis (2009) argued that the Staphylinine group of subfamilies were established by the Early Cretaceous, and few if any of the subfamilies of Staphylinidae are younger than the Early Cretaceous, although Trichophyinae and Habrocerinae might be of Late Cretaceous, perhaps Early Tertiary, age. Fortunately, attributions of at least six of the families in the Cretaceous are definitive, since they are preserved with fidelity in amber. Regardless, the major radiations of the family, at least at the higher level, seem to predate the rifting of Gondwana. It is therefore not surprising that austral disjunct distributions are not reflected at the subfamily level, although there are certainly much younger tribes or generic clades of Staphylinidae that correlate with such a vicariant pattern (e.g., Newton, 1985; and the Omaliinae genus *Metacorneolabium* Steel: Thayer, 1985).

Implications of a staphylinid of Norian-Carnian age are significant, specifically for timing the radiation of the coleopteran suborder Polyphaga, which comprises at least 85% of all living species and the great bulk of families. As discussed above, the basal suborder of beetles, the Archostemata, has a long, diverse fossil record, with stem-group fossils occurring as early as the Permian. The suborder Adephaga likewise has an excellent fossil record, including definitive Caraboidea (Trachypachidae and Carabidae) in the Triassic, including from the Solite quarries (Ponomarenko, 2002; Grimaldi and Engel, 2005; unpubl.). Definitive Polyphaga from the Triassic, however, have been both elusive and ambiguous. Meller et al. (2011) attributed an isolated abdomen to this suborder, and Papier et al. (2005) reported a possible staphylinid in the Grès-à-Voltzia Formation from France (the unique specimen of which, unfortunately, has the middle portion of the body damaged and obscured). Ponomarenko (2002), in his summary of the fossil record of beetles, mentioned Hydrophilidae, Armatopodidae, Elateridae, and Curculionoidea (Obrieniidae) in the Late Triassic. However, the fossils on which these attributions are based either do not belong to these families, or are at best ambiguous. For example, the putative weevil family Obrieniidae was later classified as an archostematan (Gratshev and Zherikhin, 2003; Grimaldi and Engel, 2005). Thus, *Leehermania* appears to be the oldest definitive polyphagan, and this underscores a dimension to the exceptional diversity of modern Coleoptera, which is the accrual of taxa through expansive periods of time.

Table 1. Mesozoic Staphylinidae (C = compression; A = amber inclusion).

Taxon	Deposit (Preservation)	Age	References
<b>TRIASSIC</b>			
<b>Subfamily incertae sedis</b>			
<i>Leehermania prorova</i> , n. gen., n. sp.	Cow Branch, VA (C)	Carnian	Herein
Undescribed possible staphylinid	Grès à Voltzia, France (C)	Anisian	Papier et al., 2005
<b>JURASSIC</b>			
<b>Subfamily Olisthaerinae Thomson</b>			
<i>Anicula inferna</i> Ryvkin	Novospassky, Russia (C)	Aalenian?	Ryvkin, 1985
<b>Subfamily Omaliinae MacLeay</b>			
<i>Archodromus brachypterus</i> Tikhomirova	Karatau, Kazakhstan (C)	Kimmeridgian	Tikhomirova, 1968
<i>Archodromus comptus</i> Tikhomirova	Karatau, Kazakhstan (C)	Kimmeridgian	Tikhomirova, 1968
<i>Eophyllodrepa propinqua</i> Ryvkin	Novospassky, Russia (C)	Aalenian?	Ryvkin, 1985
<i>Globoides microps</i> Tikhomirova	Karatau, Kazakhstan (C)	Kimmeridgian	Tikhomirova, 1968
<i>Globoides oculatus</i> Tikhomirova	Karatau, Kazakhstan (C)	Kimmeridgian	Tikhomirova, 1968
<i>Globoides</i> sp.	Neimonggol, China (C)	Bathonian	Zhang, 2002
<i>Morsum abdominale</i> Ryvkin	Kubekovo, Russia (C)	Aalenian	Ryvkin, 1985
<i>Porrhodromus communis</i> Tikhomirova	Karatau, Kazakhstan (C)	Kimmeridgian	Tikhomirova, 1968
<b>Subfamily Oxytelinae Fleming</b>			
<i>Mesoxytelus mandibularis</i> Tikhomirova	Karatau, Kazakhstan (C)	Kimmeridgian	Tikhomirova, 1968
<i>Mesoxytelus parvus</i> Tikhomirova	Karatau, Kazakhstan (C)	Kimmeridgian	Tikhomirova, 1968
<b>Subfamily Piestinae Erichson</b>			
<i>Abolescus glabratus</i> Tikhomirova	Karatau, Kazakhstan (C)	Kimmeridgian	Tikhomirova, 1968
<b>Subfamily Scaphidiinae Latreille</b>			
<i>Scaphidiopsis hageni</i> (Weyenbergh)	Solnhofen, Germany (C)	Kimmeridgian	Weyenbergh, 1869
<b>Subfamily Tachyporinae MacLeay</b>			
<i>Abscondus regularis</i> Tikhomirova	Karatau, Kazakhstan (C)	Kimmeridgian	Tikhomirova, 1968
<i>Abscondus similis</i> Tikhomirova	Karatau, Kazakhstan (C)	Kimmeridgian	Tikhomirova, 1968
<i>Mesotachinus major</i> Tikhomirova	Karatau, Kazakhstan (C)	Kimmeridgian	Tikhomirova, 1968
<i>Mesotachinus medius</i> Tikhomirova	Karatau, Kazakhstan (C)	Kimmeridgian	Tikhomirova, 1968
<i>Mesotachinus minor</i> Tikhomirova	Karatau, Kazakhstan (C)	Kimmeridgian	Tikhomirova, 1968
<i>Tachyporoides villosus</i> Tikhomirova	Karatau, Kazakhstan (C)	Kimmeridgian	Tikhomirova, 1968
<b>Subfamily incertae sedis</b>			
<i>Protostaphylinus mirus</i> Lin	Haifanggou, China (C)	Bathonian	Lin, 1976; Cai and Huang, 2010
<i>Sinostaphylius xiejiajieensis</i> Hong	Jiuda Formation, China (C)	Jurassic?	Hong, 1992
<i>Sulcelytrinus antiquus</i> Tikhomirova	Karatau, Kazakhstan (C)	Kimmeridgian	Tikhomirova, 1968
<i>Tunicopterus sigara</i> Tikhomirova	Karatau, Kazakhstan (C)	Kimmeridgian	Tikhomirova, 1968

Taxon	Deposit (Preservation)	Age	References
<b>CRETACEOUS</b>			
<b>Subfamily Euaesthetinae Thomson</b>			
<i>Nordenskioldia pentatarsus</i> (Lafebvre et al.)	Lebanon (A)	Neocomian	Lafebvre et al., 2005
<i>Octavius electrospinosus</i> Clarke and Chatzimanolis	Myanmar (A)	Albian	Clarke and Chatzimanolis, 2009
<b>Subfamily Omaliinae MacLeay</b>			
<i>Daiodromus umbrosus</i> Ryvkin	Daya, Russia (C)	Neocomian	Ryvkin, 1990
<i>Mesodeliphrum rufulum</i> Ryvkin	Turga, Russia (C)	Neocomian	Ryvkin, 1990
<i>Prodaia inflatas</i> Ryvkin	Daya, Russia (C)	Neocomian	Ryvkin, 1990
<b>Subfamily Oxyporinae Fleming</b>			
<i>Oxyporusyixianus</i> Solodovnikov and Yue	Yixian, China (C)	Barremian	Yue et al., 2011
<b>Subfamily Oxytelinae Fleming</b>			
<i>Anotylus archaicus</i> Yue et al.	Yixian, China (C)	Barremian	Yue et al., 2012
<i>Megalymma gigantean</i> Tikhomirova	Manlay, Mongolia (C)	Valanginian	Tikhomirova, 1980
<i>Megalymma rohdendorffi</i> Tikhomirova	Manlay, Mongolia (C)	Valanginian	Tikhomirova, 1980
<i>Morda mora</i> Ryvkin	Daya, Russia (C)	Neocomian	Ryvkin, 1990
<i>Sinoxytelus breviventer</i> Yue et al.	Yixian, China (C)	Barremian	Yue et al., 2009b
<i>Sinoxytelus euglypheus</i> Yue et al.	Yixian, China (C)	Barremian	Yue et al., 2009b
<i>Sinoxytelus longisetosus</i> Yue et al.	Yixian, China (C)	Barremian	Yue et al., 2009b
<i>Turgaphloeus pubescens</i> Ryvkin	Turga, Russia (C)	Neocomian	Ryvkin, 1990
<b>Subfamily Phloeocharinae Erichson</b>			
<i>Phloeocharis</i> , sp. n.	New Jersey (A)	Turonian	Chatzimanolis et al., submitted.
<b>Subfamily Scydmaeninae Leach</b>			
<i>Ektatotricha paradoxa</i> Chatzimanolis et al.	Myanmar (A)	Albian	Chatzimanolis et al., 2010
<i>Electroatopos castaneus</i> Chatzimanolis et al.	Myanmar (A)	Albian	Chatzimanolis et al., 2010
<i>Hapsomela burmitis</i> Poinar and Brown	Myanmar (A)	Albian	Poinar and Brown, 2004
<i>Kachinus antennatus</i> Chatzimanolis et al.	Myanmar (A)	Albian	Chatzimanolis et al., 2010
<i>Palaeoleptochromus schaufussi</i> O'Keefe et al.	Medicine Hat, Canada (A)	Campanian	O'Keefe et al., 1997
<b>Subfamily Solieriinae Newton and Thayer</b>			
<i>Prosolierius crassicornis</i> Thayer et. al.	Myanmar (A)	Albian	Thayer et al., 2012
<i>Prosolierius mixticornis</i> Thayer et. al.	Myanmar (A)	Albian	Thayer et al., 2012
<i>Prosolierius tenuicornis</i> Thayer et. al.	Myanmar (A)	Albian	Thayer et al., 2012
<b>Subfamily Staphylininae Latreille</b>			
<i>Cretoquedius oculatus</i> Ryvkin	Magadan, Russia (C)	Cenomanian	Ryvkin, 1988
<i>Laostaphylinus fuscus</i> Zhang	Laiyang Formation, China (C)	Barremian	Zhang, 1988

Taxon	Deposit (Preservation)	Age	References
<i>Laostaphylinus nigrifellus</i> Zhang	Laiyang Formation, China (C)	Barremian	Zhang, 1988
<i>Mesostaphylinus fraternus</i> Zhang et al.	Laiyang Formation, China (C)	Barremian	Zhang et al., 1992
<i>Mesostaphylinus laiyangensis</i> Zhang	Laiyang Formation, China (C)	Barremian	Zhang, 1988
Undescribed staphylinids	Bezonnais, France (C)	Cenomanian	Schlüter, 1978
<b>Subfamily Steninae MacLeay</b>			
<i>Stenus imputribilis</i> Ryvkin	Magadanskaia obl., Russia (C)	Cenomanian	Ryvkin, 1988
<i>Stenus inexpectatus</i> Schlüter	Bezonnais, France (A)	Cenomanian	Schlüter, 1978
<b>Subfamily Tachyporinae MacLeay</b>			
<i>Cuneocharis elongates</i> Ryvkin	Daya, Russia (C)	Neocomian	Ryvkin, 1990
<i>Glabrimycetoporus amoenus</i> Yue et al.	Yixian, China (C)	Barremian	Yue et al., 2009a
<i>Hesterniasca obesa</i> Zhang et al.	Laiyang, China (C)	Barremian	Zhang et al., 1992
<i>Hesterniasca lata</i> Cai et al.	Yixian, China (C)	Barremian	Cai et al., 2011
<i>Mesotachyporus puer</i> Gusarov	New Jersey (A)	Turonian	Gusarov, 2000
<i>Ryvkinus gracilis</i> (Ryvkin)	Daya, Russia (C)	Neocomian	Ryvkin, 1990; Herman, 2001a
<i>Undiatina pilosa</i> Ryvkin	Semyon, Russia (C)	Neocomian	Ryvkin, 1990
<b>Subfamily Trigonurinae Reiche</b>			
<i>Kovalevia onokhoica</i> Ryvkin	Onozhoi, Russia (C)	Valanginian	Ryvkin, 1990
<i>Trigunda lata</i> Ryvkin	Semyon, Russia (C)	Neocomian	Ryvkin, 1990
<b>Subfamily incertae sedis</b>			
<i>Caririderma pilosa</i> Martins-Neto <sup>1</sup>	Crato, Brazil (C)	Aptian	Martins-Neto, 1990, 2005
<i>Megolisthaerus chinensis</i> Solodovnikov and Yue	Yixian, China (C)	Barremian	Yue et al., 2010
<i>Scaphylinus ammanicus</i> Kaddumi	Aarda-Subeihi, Jordan (A)	Neocomian	Kaddumi, 2005
<i>Sinostaphylina nanligezhuangensis</i> Hong and Wang	Yixian, China (C)	Barremian	Hong and Wang, 1990
<i>Apticax volans</i> Schomann and Solodovnikov	Crato, Brazil (C)	Aptian	Schomann and Solodovnikov, 2012
<i>Apticax solidus</i> Schomann and Solodovnikov	Crato, Brazil (C)	Aptian	Schomann and Solodovnikov, 2012
Undescribed staphylinids	Queensland, Australia (C)	Aptian	Jell and Duncan, 1986
Undescribed staphylinids	Las Hoyas, El Montsec, Spain (C)	Barremian	Soriano et al., 2007
Undescribed staphylinids	Álava, Spain (C)	Albian	Alonso et al., 2000
Undescribed staphylinids	Charente-Maritime, France (A)	Albian	Perrichot et al., 2007

<sup>1</sup> Schomann and Solodovnikov (2012) mentioned that *C. pilosa* may not belong in Coleoptera

## ACKNOWLEDGMENTS

We thank Peter Jell, Alexander P. Rasnitsyn, Andrew J. Ross, Phil Perkins, and John Anderson for hosting visits by D.A.G. to, respectively, the Queensland Museum, Paleontological Institute in Moscow, Natural History Museum in London, the Museum of Comparative Zoology at Harvard University, and the National Botanical Institute in Pretoria. We thank Al Newton for providing references and comments on the table of Mesozoic Staphylinidae, and Lee Herman, Enrique Peñalver, and an anonymous reviewer for detailed critiques of the manuscript. Financial support was provided by NSF-EAR0106309 to N.C.F. and D.A.G., NSF DEB-0542909 to M.S.E., and NSF DEB-0741475 to S.C. and M.S.E. This is a contribution of the Division of Entomology, University of Kansas Natural History Museum.

## REFERENCES

- Alonso, J., et al. 2000. A new fossil resin with biological inclusions in Lower Cretaceous deposits from Álava (northern Spain, Basque-Cantabrian basin). *Journal of Paleontology* 74 (1): 158–178.
- Ashe, J.S. 2005. Phylogeny of the tachyporine group subfamilies and ‘basal’ lineages of Aleocharinae (Coleoptera: Staphylinidae) based on larval and adult characteristics. *Systematic Entomology* 30 (1): 3–37.
- Bechly, G. 1997. New fossil odonates from the Upper Triassic of Italy, with a redescription of *Italophlebia gervasuttii* Whalley, and a reclassification of Triassic dragonflies (Insecta: Odonata). *Rivista del Museo Civico di Scienze Naturali “Enrico Caffi”* 19: 31–70.
- Beckemeyer, R.J., and M.S. Engel. 2008. A second specimen of *Permocoleus* (Coleoptera) from the Lower Permian Wellington Formation of Noble County, Oklahoma. *Journal of the Kansas Entomological Society* 81 (1): 4–7.
- Berner, R.A. 2002. Examination of hypotheses for the Permo-Triassic boundary extinction by carbon cycle modeling. *Proceedings of the National Academy of Sciences of the United States of America* 99 (7): 4172–4177.
- Béthoux, O. 2009. The earliest beetle identified. *Journal of Paleontology* 83 (6): 931–937.
- Blagoderov, V., D.A. Grimaldi, and N.C. Fraser. 2007. How time flies for flies: diverse Diptera from the Triassic of Virginia and early radiation of the order. *American Museum Novitates* 3572: 1–39.
- Bowring, S.A., D.H. Erwin, and Y. Isozaki. 1999. The tempo of mass extinctions and recovery: The end-Permian example. *Proceedings of the National Academy of Sciences of the United States of America* 96 (16): 8827–8828.
- Brauckmann, S., and T. Schlüter. 1993. Neue Insekten aus der Trias von Unter-Franken. *Geologica et Palaeontologica* 27: 181–199.
- Cai, C., and D. Huang. 2010. Current knowledge on Jurassic staphylinids of China (Insecta, Coleoptera). *Earth Science Frontiers* 17: 151–153.
- Cai, C., D. Huang, and A. Solodovnikov. 2011. A new species of *Hesterniasca* (Coleoptera: Staphylinidae: Tachyporinae) from the Early Cretaceous of China with discussion of its systematic position. *Insect Systematics and Evolution* 42 (2): 213–220.
- Chatzimanolis, S., M.S. Engel, A.F. Newton, and D.A. Grimaldi. 2010. New ant-like stone beetles in mid-Cretaceous amber from Myanmar (Coleoptera: Staphylinidae: Scydmaeninae). *Cretaceous Research* 31 (1): 77–84.



- Clarke, D.J., and S. Chatzimanolis. 2009. Antiquity and long-term morphological stasis in a group of rove beetles (Coleoptera: Staphylinidae): description of the oldest *Octavius* species from Cretaceous Burmese amber and a review of the “euaesthetine subgroup” fossil record. *Cretaceous Research* 30 (6): 1426–1434.
- Crowson, R.A. 1975. The evolutionary history of Coleoptera, as documented by fossil and comparative evidence. *Atti del X Congresso Nazionale Italiano di Entomologia 1974*: 47–90.
- Dunstan, B. 1923. Part I. Introduction and Coleoptera. Mesozoic insects of Queensland. Publication of the Queensland Geological Survey, Brisbane 273: 1–88.
- Emery, C. 1886. Über Phylogenie und Systematik der Insekten. *Biologisches Zentralblatt* 5 (21): 648–656.
- Erwin, D.H. 1993. The great Paleozoic crisis: life and death in the Permian. New York: Columbia University Press, xi + 327 pp.
- Fraser, N.C., and D.A. Grimaldi. 2003. Late Triassic continental faunal change: new perspectives on Triassic insect diversity as revealed by a locality in the Danville Basin, Virginia, Newark supergroup. In P.M. Letourneau and P.E. Olsen (editors), *The great rift valleys of Pangea in eastern North America*. Vol. 2. Sedimentology, stratigraphy, and paleontology: 192–205. New York: Columbia University Press, xxiii + [i] + 384 pp.
- Fraser, N.C., D.A. Grimaldi, and P.E. Olsen. 1996. A Triassic Lagerstätte from eastern North America. *Nature* 380 (6575): 615–619.
- Fujiyama, I. 1973. Mesozoic insect fauna of East Asia. Part I. Introduction and Upper Triassic faunas. *Bulletin of the National Science Museum* 16 (2): 331–386.
- Geertsema, H., and J.A. van der Heever. 1996. A new beetle, *Afrocupes firmae* gen. et sp. nov. (Permo-cupedidae), from the Late Palaeozoic Whitehill Formation of South Africa. *South African Journal of Science* 92 (10): 497–499.
- Gore, P.J.W. 1988. Paleoecology and sedimentology of a Late Triassic lake, Culpeper Basin, Virginia, USA. *Palaeogeography, Palaeoclimatology, Palaeoecology* 62 (1–4): 593–608.
- Grimaldi, D., and M.S. Engel. 2005. *Evolution of the insects*. Cambridge: Cambridge University Press, xv + 755 pp.
- Grimaldi, D., A. Shmakov, and N. Fraser. 2004. Mesozoic thrips and early evolution of the order Thysanoptera (Insecta). *Journal of Paleontology* 78 (5): 941–952.
- Grimaldi, D., J.-F. Zhang, N.C. Fraser, and A. Rasnitsyn. 2005. Revision of the bizarre Mesozoic scorpionflies in the Pseudopolycentropodidae (Mecopteroidea). *Insect Systematics and Evolution* 36 (4): 443–458.
- Gusarov, V.I. 2000. *Mesotachyporus puer*, a new genus and species of Cretaceous Tachyporinae (Coleoptera: Staphylinidae) from New Jersey amber. In D. Grimaldi (editor), *Studies on fossils in amber, with particular reference to the Cretaceous of New Jersey*: 255–258. Leiden: Backhuys Publishers, viii + 498 pp.
- Herman, L.H. 2001a. Nomenclatural changes in the Staphylinidae (Insecta: Coleoptera). *Bulletin of the American Museum of Natural History* 264: 1–83.
- Herman, L.H. 2001b. Catalog of the Staphylinidae (Insecta: Coleoptera): 1758 to the end of the second millennium. *Bulletin of the American Museum of Natural History* 265: 1–4218.
- Hong, Y.-C. 1992. Middle and Late Jurassic insects. In *Palaeontological atlas of Jilin Province*: 416–417. Jilin: Jilin Science and Technology Press. [in Chinese, with English summary]
- Hong, Y.-C., and W.L. Wang. 1990. Fossil insects from the Laiyang Basin, Shandong Province. In Y.C. Hong (editor), *Stratigraphy and palaeontology of Laiyang Basin, Shandong Province*: 109–110, 164–189. Beijing: Geological Publishing House, 255 pp. [in Chinese, with English summary]

- Huber, P., N.G. McDonald, and P.E. Olsen. 2003. Early Jurassic insects from the Newark Supergroup, northeastern United States. In P.M. LeTourneau and P.E. Olsen (editors). The great rift valleys of Pangea in Eastern North America. Vol. 2, Sedimentology, stratigraphy, and paleontology: 206–223. New York: Columbia University Press, xxiii + [i] + 384 pp.
- Huey, R.B., and P.D. Ward. 2005. Hypoxia, global warming and terrestrial late Permian extinctions. *Science* 308 (5270): 398–401.
- Jell, P.A., and P.M. Duncan. 1986. Invertebrates, mainly insects, from the freshwater Lower Cretaceous, Koonwarra fossil bed (Korumburra Group), south Gippsland, Victoria. *Memoirs of the Association of Australasian Palaeontologists* 3: 111–205.
- Kaddumi, H.F. 2005. Amber of Jordan: the oldest prehistoric insects in fossilized resin. 2nd ed. Amman: Publications of the Eternal River Museum of Natural History, 224 pp.
- Knoll, A.H., R.K. Bambach, D.E. Canfield, and J.P. Grotzinger. 1996. Comparative Earth history and late Permian mass extinction. *Science* 273 (5274): 452–457.
- Kukalová, J. 1969. On the systematic position of the supposed Permian beetles, Tshcardocoleidae [sic], with a description of a new collection from Moravia. *Sborník Geologických věd Paleontologie* 11: 139–161.
- Latreille, P.A. 1802. Histoire naturelle, générale et particulière des crustacés et des insectes. Ouvrage faisant suite à l'histoire naturelle générale et particulière, composée par Leclerc de Buffon, et rédigée par C. S. Sonnini, membre de plusieurs sociétés savantes. Tome troisième [3]. Paris: Dufart, xii + 467 pp.
- Lawrence, J.F., and A.F. Newton, Jr. 1982. Evolution and classification of beetles. *Annual Review of Ecology and Systematics* 13: 261–290.
- Lefebvre, F., B. Vincent, D. Azar, and A. Nel. 2005. The oldest beetle of the Euaesthetinae (Staphylinidae) from Early Cretaceous Lebanese amber. *Cretaceous Research* 26 (2): 207–211.
- Lin, Q.-B. 1976. The Jurassic fossil insects from western Liaoning. *Acta Palaeontologica Sinica* 15 (1): 97–116. [in Chinese, with English summary]
- Lin, Q.-B. 1983 [1984]. Two beetle fossils from the Sanqitian Formation (Upper Triassic) in Liuyang County of Hunan. *Bulletin of the Nanjing Institute of Geology and Palaeontology, Supplement* 6: 297–307. [in Chinese, with English summary]
- Lin, Q.-B. 1986. Early Mesozoic fossil insects from south China. *Palaeontologia Sinica, Series B, Supplement* 21: i–iii, 1–112. [in Chinese, with English summary]
- Lin, Q.-B. 1992. Late Triassic insect fauna from Toksun, Xinjiang. *Acta Paleontologica Sinica* 31 (3): 313–335. [in Chinese, with English summary]
- Lin, Q.-B., and C.-J. Mou. 1989. On insects from Upper Triassic Xiaoping Formation, Guangzhou, China. *Acta Paleontologica Sinica* 28 (5): 598–603. [in Chinese, with English summary]
- Linnaeus, C. 1758. *Systema Naturae per regna tria natura, secundum classes, ordines, genera, species, cum characteribus, differentiis synonymis, locis*. 10th ed., revised. Holmiae [Stockholm]: Laurentii Salvii, 824 pp.
- Lubkin, S.H., and M.S. Engel. 2005. *Permocoleus*, new genus, the first Permian beetle (Coleoptera) from North America. *Annals of the Entomological Society of America* 98 (1): 73–76.
- Martins-Neto, R.G. 1990. Primeiro registro de Dermaptera (Insecta, Orthopteromorpha) na Formação Santana (Cretáceo inferior), Bacia do Araripe, nordeste do Brasil. *Revista Brasileira de Entomologia* 34: 775–784.
- Martins-Neto, R.G. 2005. Estágio atual da paleoartropologia brasileira: hexápodos, miriápodos, crustáceos (Isopoda, Decapoda, Eucrústeacea e Copepoda) e quelicerados. *Arquivos do Museu Nacional, Rio de Janeiro* 63: 471–494.

- Martins-Neto, R.G., O.F. Gallego, and A.C. Mancuso. 2006. The Triassic insect fauna from Argentina. Coleoptera from the Los Rastros Formation (Bermejo Basin), La Rioja Province. *Ameghiniana* 43 (3): 591–609.
- Martins-Neto, R.G., O.F. Gallego, and A.M. Zavattieri. 2007. A new Triassic insect fauna from Cerro Bayo, Potrerillos (Mendoza Province, Argentina) with descriptions of new taxa (Insecta: Blattoptera and Coleoptera). *Alcheringa* 31 (2): 199–213.
- Martins-Neto, R.G., O.F. Gallego, and A.M. Zavattieri. 2008. The Triassic insect fauna from Argentina: Coleoptera, Hemiptera and Orthoptera from the Potrerillos Formation, south of Cerro Cacheuta, Cuyana basin. *Alavesia* 2: 47–58.
- Martynov, A.V. 1932. Permian fossil insects of the Arkhangelsk District. *Trudy Paleontologicheskogo Instituta Akademii Nauk SSSR* [Transactions of the Paleontological Institute, Academy of Sciences, USSR] 2:83–96.
- Martynov, A.V. 1937. Permian fossil insects from Kargala and their relationships. *Trudy Paleontologicheskogo Instituta Akademii Nauk SSSR* [Transactions of the Paleontological Institute, Academy of Sciences, USSR] 7: 1–92.
- Meller, B., A.G. Ponomarenko, D.V. Vasilenko, T.C. Fischer, and B. Aschauer. 2011. First beetle elytra, abdomen (Coleoptera) and a mine trace from Lunz (Carnian, Late Triassic, Lunz-Am-See, Austria) and their taphonomical and evolutionary aspects. *Palaeontology* 54 (1): 97–110.
- Newton, A.F. 1985. South temperate Staphylinoidea (Coleoptera): their potential for biogeographic analysis of austral disjunctions. *In* G.E. Ball (editor), *Taxonomy, phylogeny, and zoogeography of beetles and ants: a volume dedicated to the memory of Philip Jackson Darlington, Jr. (1904–1983)*: 180–220. Dordrecht: Junk-Kluwer, xiii + 514 pp.
- Newton, A.F. 2011. Phylogenie und Systematik. *In* V. Assing and M. Schülke (editors), *Die Käfer Mitteleuropas. Band 4. Staphylinidae (exklusive Aleocharinae, Pselaphinae und Scydmaeninae). 2. Auflage: 1–4*. Heidelberg: Spektrum Akademischer Verlag, xii + 560 pp.
- O’Keefe, S.T., T. Pike, and G. Poinar. 1997. *Palaeoleptochromus schaufussi* (gen. nov., sp. nov.), a new antlike stone beetle (Coleoptera: Scydmaenidae) from Canadian Cretaceous amber. *Canadian Entomologist* 129 (3): 379–385.
- Olsen, P.E. 1986. A 40-million-year lake record of early Mesozoic orbital climatic forcing. *Science* 234 (4778): 842–848.
- Olsen, P.E., and D.V. Kent. 1996. Milankovitch climate forcing in the tropics of Pangaea during the late Triassic. *Palaeogeography, Palaeoclimatology, Palaeoecology* 122 (1–4): 1–26.
- Olsen, P.E., C.L. Remington, B. Cornet, and K.S. Thomson. 1978. Cyclic change in Late Triassic lacustrine communities. *Science* 201 (4357): 729–733.
- Olsen, P.E., A.J. Froelich, D.L. Daniels, J.P. Smoot, and P.J.W. Gore. 1991. Rift basins of early Mesozoic age. *In* W. Horton and V.A. Zullo (editors), *Geology of the Carolinas*, Carolina Geological Society 50th anniversary volume: 142–170. Knoxville: University of Tennessee Press, 406 pp.
- Olsen, P.E., D.V. Kent, B. Cornet, W.K. Witte, and R.W. Schlische. 1996. High-resolution stratigraphy of the Newark rift basin (Early Mesozoic, eastern North America). *Geological Society of America* 108: 40–77.
- Papier, F., A. Nel, L. Grauvogel-Stamm, and J.-C. Gall. 2005. La diversité des Coleoptera (Insecta) du Trias dans le nord-est de la France. *Geodiversitas* 27 (2): 181–199.
- Perrichot, V., D. Néraudeau, A. Nel, and G. de Ploëg. 2007. A reassessment of the Cretaceous amber deposits from France and their palaeontological significance. *African Invertebrates* 48 (1): 213–227.
- Pinto, I.D. 1987. Permian insects from Paraná Basin, south Brazil IV Coleoptera. *Pesquisas* 19: 5–12.

- Poinar, G., and A.E. Brown. 2004. A new subfamily of Cretaceous antlike stone beetles (Coleoptera: Scydmaenidae: Hapsomelinae) with an extra leg segment. *Proceedings of the Entomological Society of Washington* 106 (4): 789–796.
- Ponomarenko, A.G. 1963. Paleozoic beetles of Cupedidae from the European USSR. *Paleontologicheskii Zhurnal* 1: 70–85. [in Russian]
- Ponomarenko, A.G. 1969. Istoricheskoe razvitiye zhestkokrylykh-arkhostemat [Historical development of the Coleoptera-Archostemata]. *Trudy Paleontologicheskogo Instituta Akademii Nauk SSSR* [Transactions of the Paleontological Institute, Academy of Sciences, USSR] 125: 1–240, + pls. 1–14. [in Russian]
- Ponomarenko, A.G. 1977. Suborder Adephaga. *Trudy Paleontologicheskogo Instituta Akademii Nauk SSSR* [Transactions of the Paleontological Institute, Academy of Sciences, USSR] 161: 17–96. [in Russian]
- Ponomarenko, A.G. 1995. The geological history of beetles. *In* J. Pakaluk, and S.A. Ślipiński (editors), *Biology, phylogeny, and classification of Coleoptera: papers celebrating the 80th birthday of Roy A. Crowson* [Vol. 1]: 155–171. Warsaw: Muzeum i Instytut Zoologii PAN, 1092 pp. [2 vols.]
- Ponomarenko, A.G. 2000. New beetles from the Permian of European Russia. *Paleontological Journal Supplement* 34: S312–S316.
- Ponomarenko, A.G. 2002. Superorder Scarabaeidea Laicharting, 1781. Order Coleoptera Linné, 1758. The beetles. *In* A.P. Rasnitsyn and D.L.J. Quicke (editors), *History of insects*: 164–176. Dordrecht: Kluwer Academic Publishers, xii + 517 pp.
- Ponomarenko, A.G. 2003. The first beetles (Permosynidae, Coleoptera) from the Upper Tatarian of European Russia. *Paleontologicheskii Zhurnal* 2: 65–68. [in Russian]
- Riek, E.F. 1955. Fossil insects from the Triassic beds at Mt. Crosby, Queensland. *Australian Journal of Zoology* 3: 654–691.
- Riek, E.F. 1974. Upper Triassic insects from the Molteno Formation, South Africa. *Palaeontographia Africana* 17: 19–31.
- Riek, E.F. 1976. A new collection of insects from the Upper Triassic of South Africa. *Annals of the Natal Museum* 22: 791–820.
- Rohdendorf, B.B. 1944. A new family of Coleoptera from the Permian of the Urals. *Doklady Akademii Nauk, SSSR* [Proceedings of the Academy of Sciences, USSR] 44: 252–253.
- Rohdendorf, B.B. 1961. Superorder Coleopteroidea. *In* B.B. Rohdendorf, E.E. Becker-Migdisova, O.M. Martynova, and A.G. Sharov (editors), *Paleozoic insects of the Kuznetsk Basin*: 393–469. Moscow: Akademia Nauka, 705 pp. [in Russian; vol. 85 of the series *Trudy Paleontologicheskogo Instituta Akademii Nauk SSSR*]
- Ryvkin, A.B. 1985. Beetles of the family Staphylinidae from the Jurassic of Transbaikalia. *Trudy Paleontologicheskogo Instituta, Akademia nauk SSSR* 211: 88–91. [in Russian]
- Ryvkin, A.B. 1988. New Cretaceous Staphylinidae (Insecta) from the Far East. *Paleontological Journal* 4: 103–106. [in Russian]
- Ryvkin, A.B. 1990. Family Staphylinidae Latreille, 1802. *Trudy Paleontologicheskogo Instituta Akademii Nauk SSSR* 239: 52–66. [in Russian]
- Schlüter, T. 1978. Zur Systematic und Palökologie harzkonservierter Arthropoda einer Taphozönose aus dem Cenomanium von NW-Frankreich. *Berliner Geowissenschaftliche Abhandlungen, Reihe A, Geologie und Paläontologie* 9: 1–150.
- Schomann, A., and A. Solodovnikov. 2012. A new genus of Staphylinidae (Coleoptera) from the Lower Cretaceous: the first fossil rove beetles from the Southern Hemisphere. *Systematic Entomology* 37 (2): 379–386.

- Selden, P.A., J.M. Anderson, H.M. Anderson, and N.C. Fraser. 1999. Fossil araneomorph spiders from the Triassic of South Africa and Virginia. *Journal of Arachnology* 27 (2): 401–414.
- Soriano, C., X. Delclòs, and A.G. Ponomarenko. 2007. Beetle associations (Insecta: Coleoptera) from the Barremian (Lower Cretaceous) of Spain. *Alavesia* 1: 81–88.
- Sinitshenkova, N.D. 2002. Ecological history of aquatic insects. In A.P. Rasnitsyn and D.L.J. Quicke (editors), *History of insects*: 388–417. Dordrecht: Kluwer Academic, xii + 517 pp.
- Thayer, M.K. 1985. Revision, phylogeny, and biogeography of the austral genus *Metacorneolabium* Steel (Coleoptera: Staphylinidae: Omaliinae). In G.E. Ball (editor), *Taxonomy, phylogeny, and zoogeography of beetles and ants: a volume dedicated to the memory of Philip Jackson Darlington, Jr. (1904–1983)*: 113–179. Dordrecht: W. Junk-Kluwer, xiii + 514 pp.
- Thayer, M.K. 2005. Staphylinidae. In R.G. Beutel and R.A.B. Leschen (editors), *Handbook of zoology: Coleoptera [Vol. 1]: evolution and systematics, Archostemata, Adephaga, Myxophaga, Staphyliniformia, Scarabaeiformia, Elateriformia*: 296–344. Berlin: Walter de Gruyter, 567 pp.
- Thayer, M.K., A.F. Newton, and S. Chatzimanolis. 2012. *Prosolierius*, a new mid-Cretaceous genus of Solieriinae (Coleoptera: Staphylinidae) with three new species from Burmese amber. *Cretaceous Research* 34: 124–134.
- Tikhomirova, A.L. 1968. Staphylinid beetles from Jurassic of Karatau (Coleoptera: Staphylinidae). In B.B. Rohdendorf (editor), *Jurassic insects of Karatau*: 139–154. Moscow: Akademiya Nauk SSSR, 252 pp. [in Russian]
- Tikhomirova, A.L. 1980. Lower Cretaceous staphylinid beetles from the Manlay locality. In V.A. Topachevskij (editor), *Early Cretaceous, Lake Manlay, Joint Soviet-Mongolian Paleontological Expedition 13*: 57–58. [in Russian]
- Vršanský, P. 2003. *Phyloblatta grimaldii* sp. nov. – a new Triassic cockroach (Insecta: Blattaria) from Virginia. *Entomological Problems* 33 (1–2): 51–53.
- Weyenbergh, H. 1869. Sur les insectes fossiles du calcaire lithographique de la Bavière, qui se trouvent au Musée Teyler. *Extrait des Archives du Musée Teyler* 2: 247–294.
- Whalley, P. 1986. Insects from the Italian Upper Trias. *Rivista del Museo Civico di Scienze Naturali “Enrico Caffi”* 10: 51–60.
- Yue, Y., Y. Zhao, and D. Ren. 2009a. *Glabrimycetoporus amoenus*, a new tachyporine genus and species of Mesozoic Staphylinidae (Coleoptera) from Liaoning, China. *Zootaxa* 2225: 63–68.
- Yue, Y., Y. Zhao, and D. Ren. 2009b. Three new Mesozoic staphylinids (Coleoptera) from Liaoning, China. *Cretaceous Research* 31 (1): 61–70.
- Yue, Y., D. Ren, and A. Solodovnikov. 2010. *Megolisthaerus chinensis* gen. et sp. n. (Coleoptera: Staphylinidae incertae sedis): an enigmatic rove beetle lineage from the Early Cretaceous. *Insect Systematics and Evolution* 41 (4): 317–327.
- Yue, Y., D. Ren, and A. Solodovnikov. 2011. The oldest fossil species of the rove beetle subfamily Oxyporinae (Coleoptera: Staphylinidae) from the Early Cretaceous (Yixian Formation, China) and its phylogenetic significance. *Journal of Systematic Palaeontology* 9 (4): 467–471.
- Yue, Y., G. Makranczy, and D. Ren. 2012. A Mesozoic species of *Anotylus* (Coleoptera, Staphylinidae, Oxytelinae) from Liaoning, China, with the earliest evidence of sexual dimorphism in rove beetles. *Journal of Paleontology* 86 (3): 508–512.
- Zhang, J. 1988. The Late Jurassic fossil Staphylinidae (Coleoptera) from China. *Acta Entomologica Sinica* 31 (1): 79–84.
- Zhang, J. 2002. Discovery of Daohugou Biota (pre-Jehol Biota) with a discussion on its geological age. *Journal of Stratigraphy* 26 (3): 173–177.



Zhang, J., X. Wang, and G. Xu. 1992. A new genus and two new species of fossil staphylinids (Coleoptera) from Laiyang, Shandong Province, China. *Entomotaxonomia* 14 (4): 277–281.

Complete lists of all issues of *Novitates* and *Bulletin* are available on the web (<http://digitallibrary.amnh.org/dspace>). Inquire about ordering printed copies via e-mail from [scipubs@amnh.org](mailto:scipubs@amnh.org) or via standard mail from:

American Museum of Natural History—Scientific Publications  
Central Park West at 79th Street  
New York, NY 10024

Ⓢ This paper meets the requirements of ANSI/NISO Z39.48-1992 (permanence of paper).