



The Native Psyllid *Mastigimas anjosi* (Hemiptera: Calophyidae): First Record and Abundance on Pink Cedar, *Cedrela fissilis* (Meliaceae), Trees in São Paulo, Brazil

Authors: Ferreira-Filho, Pedro J., Prado, Marcelle C. N., Ghiotto, Thais C., Giuliani, Graziella K. F., Dias, Luiz P., et al.

Source: Florida Entomologist, 100(4) : 817-819

Published By: Florida Entomological Society

URL: <https://doi.org/10.1653/024.100.0410>

BioOne Complete (complete.BioOne.org) is a full-text database of 200 subscribed and open-access titles in the biological, ecological, and environmental sciences published by nonprofit societies, associations, museums, institutions, and presses.

Your use of this PDF, the BioOne Complete website, and all posted and associated content indicates your acceptance of BioOne's Terms of Use, available at www.bioone.org/terms-of-use.

Usage of BioOne Complete content is strictly limited to personal, educational, and non - commercial use. Commercial inquiries or rights and permissions requests should be directed to the individual publisher as copyright holder.

BioOne sees sustainable scholarly publishing as an inherently collaborative enterprise connecting authors, nonprofit publishers, academic institutions, research libraries, and research funders in the common goal of maximizing access to critical research.

The native psyllid *Mastigimas anjosi* (Hemiptera: Calophyidae): first record and abundance on pink cedar, *Cedrela fissilis* (Meliaceae), trees in São Paulo, Brazil

Pedro J. Ferreira-Filho^{1,*}, Marcelle C. N. Prado¹, Thais C. Ghiotto¹, Graziella K. F. Giuliani², Luiz P. Dias¹, Matheus M. Silva¹, Julio C. Guerreiro², José C. Zanuncio¹

Pink cedar, *Cedrela fissilis* Vell. (Meliaceae), is endemic to the Brazilian Atlantic Forest, and is found in much of the interior of Brazil, under both dry and wet conditions (Pinheiro et al. 1990; Lisboa 1994). It is also found widely in Central and South America (Carvalho 2003). This plant has slow growing, dense, and hard wood, and since 1998 has been included on the List of Threatened Species (IUCN 2016). *Cedrela fissilis* can be heavily damaged by the mahogany shoot borer, *Hypsipyla grandella* Zeller (Lepidoptera: Pyralidae), which slows its development (Pereira et al. 2016). The purpose of this study was to identify and report on the occurrence of psyllids observed on pink cedar plants in the region of Sorocaba (23.5778 °S and 47.5216 °W), São Paulo State, Brazil.

Twenty insects were collected in January 2016, packed in bottles with 70% alcohol and sent to Dr. Daniel Burckhardt of Naturhistorisches Museum, Basel, Switzerland for identification. A survey of these psyllids and of its natural enemies were carried out on 2 *C. fissilis* plants, each with one trap consisting of yellow plastic cards with adhesive on both sides and a capture area of 100 cm² on each side (Ferreira-Filho et al. 2008). Each trap was attached to a *C. fissilis* plant, at approximately 2.5 m height.

A total of 7 samples were collected from each tree, at approximately 15 d intervals. The traps were replaced, wrapped in transparent plastic film to avoid damage to the insects captured, and labelled. The traps were stored at 0 °C until tabulating the psyllids and potential natural enemies. The insects were tabulated using a stereoscopic microscope with 10X magnification.

Infested leaves were yellowish, covered with sooty mold, and displayed early leaf drop when supporting immature and adult psyllids in the field (Fig. 1A, B, C, D). A total of 382 psyllids were collected in the sticky traps, consisting of 249 males and 133 females, from Aug to Nov 2015, with the highest numbers captured in Aug.

The psyllids were identified as *Mastigimas anjosi* Burckhardt, Queiroz D., Queiroz E., Andrade, Zanol, Rezende & Kotrba (Hemiptera: Psylloidea: Calophyidae), which are native to Brazil. In general appearance, they are similar to a small cicada, with the females measuring 4.8 to 5.5 mm and the males 4.2 to 5.0 mm (Fig. 1E, F). This psyllid was described in commercial plantations of *Toona ciliata* M. Roem. var. *australis* (Meliaceae) in Brazil (Burckhardt et al. 2011) causing rolling,

deformation of the leaves, chlorosis, spotting, and necrosis of the foliage (Costa et al. 2015).

Mastigimas anjosi has been reported from Bananal (São Paulo), Colombo (Paraná), Florestal and Ouro Branco in 2008 and 2009 (Burckhardt et al. 2011), from Conselheiro Lafaiete (Minas Gerais) in 2009 on *T. ciliata* plants (Queiroz et al. 2013), and from Lavras (Minas Gerais) in 2010 (Burckhardt et al. 2011) and Curitiba (Paraná) in 2013 on *C. fissilis* plants (Queiroz et al. 2013). *Mastigimas* spp. affect plants of the genera *Cedrela* and *Toona* and have wide geographical distribution. They are found from Mexico, Central America and the Caribbean, south to Brazil and Bolivia (Hodkinson 1989; Burckhardt et al. 2013). *Mastigimas anjosi* has five instars, with the nymphs light greenish-yellow in color on most of its body. The adult has stripes and brown spots on the abdomen and membranous wings, and brown wing venation (Burckhardt et al. 2011; Queiroz et al. 2013).

We observed *Cycloneda sanguinea* L. (Coleoptera: Coccinellidae) larvae and *Atopozelus opsimus* Elkins (Hemiptera: Heteroptera: Reduviidae) nymphs and adults preying on immatures of *M. anjosi* on *C. fissilis* leaflets. In addition, flower fly larvae (Diptera: Syrphidae) and lacewing (Neuroptera: Chrysopidae) eggs and adults were observed near the colonies of this psyllid on *T. ciliata* trees in Minas Gerais State, Brazil (Queiroz et al. 2013; Costa et al. 2015). *Psyllaephagus trioziphagus* Howard (Hymenoptera: Encyrtidae) has been observed to parasitize immature *M. anjosi* and, although not a specific parasitoid, was reported as a possible control agent of this pest in Brazil (Costa et al. 2015).

In conclusion, *M. anjosi* can infest and damage *C. fissilis* trees, reducing the development of this plant in natural and restored areas in Brazil. Populations of this psyllid can be monitored using yellow sticky traps.

Acknowledgments

The authors express their sincere thanks to Dr. Daniel Burckhardt of Naturhistorisches Museum, Basel, Switzerland for the identification of the species studied. To Conselho Nacional de Desenvolvimento Científico e Tecnológico (CNPq) and the Fundação de Amparo à Pesquisa do

¹Departamento de Ciências Ambientais, Universidade Federal de São Carlos, 18052-780, Sorocaba, São Paulo, Brasil, E-mail: pedrojff@ufscar.br (P.J.F.-F.), marcellecprado@gmail.com (M.C.N.P.), thais.ghiotto@hotmail.com (T.C.G.), graziella.giuliani@outlook.com (G.K.F.G.), luiz.philippe_dias@yahoo.com.br (L.P.D.), mattheuz@msn.com (M.M.S)

²Departamento de Agronomia, Centro de Ciências Biológicas, Universidade Estadual de Maringá, 87507-190, Umuarama, Paraná, Brasil, E-mail: juliocguerreiro@yahoo.com.br (J.C.G)

³Departamento de Entomologia/BIOAGRO, Universidade Federal de Viçosa, 36570-900, Viçosa, Minas Gerais, Brasil, E-mail: zanuncio@ufv.br (J.C.Z.)

*Corresponding author; E-mail: pedrojff@ufscar.br

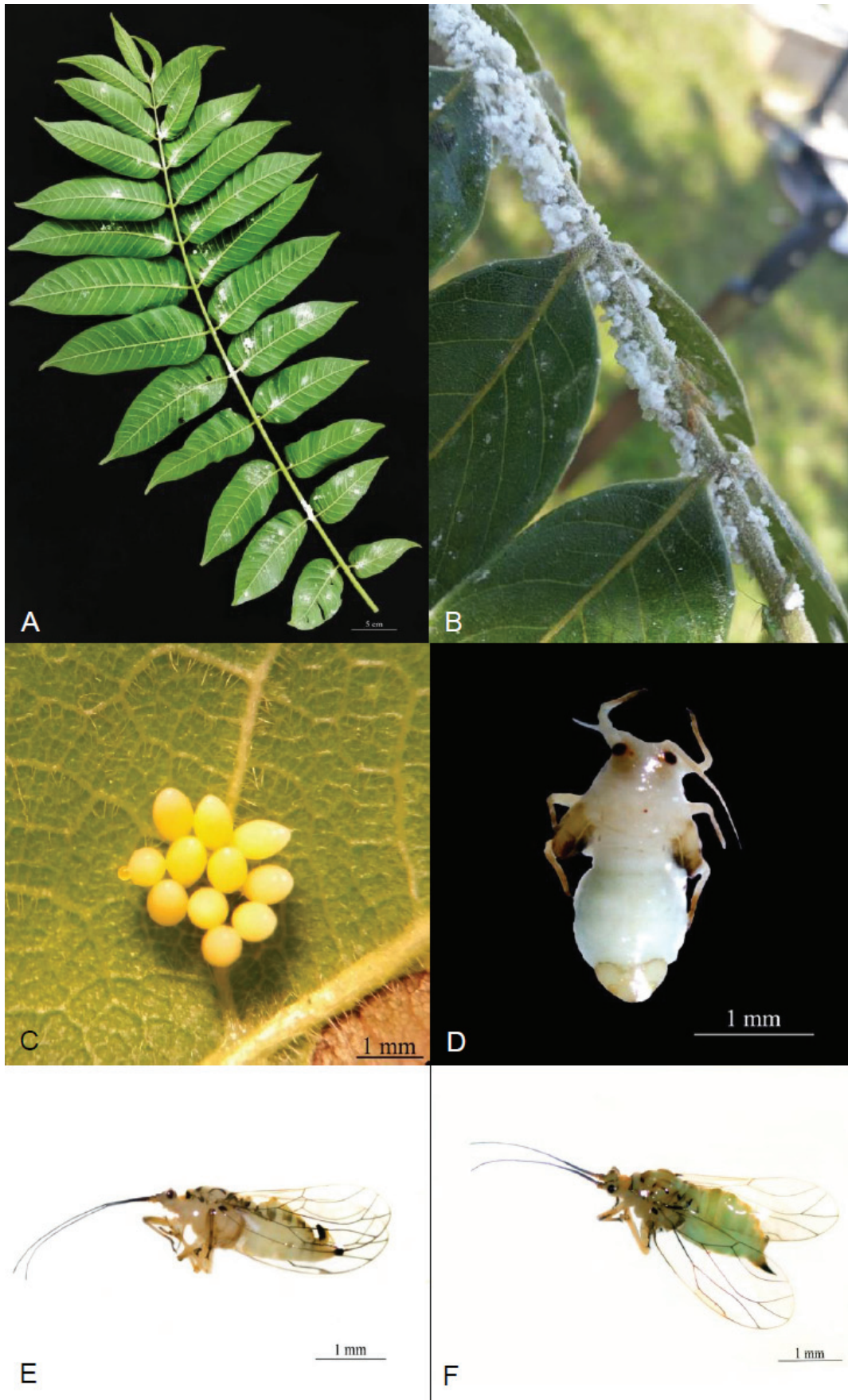


Fig. 1. *Cedrela fissilis* (Meliaceae) leaf showing (A) infestation *Mastigimas anjosi* (Hemiptera: Calophyidae) on the abaxial surface, and (B) closer view of immatures and adults heavily infesting a leaf. *Mastigimas anjosi* eggs (C), fifth instar (D), male (E) and female (F). Sorocaba, São Paulo State, Brazil.

Estado de Minas Gerais, Brasil. Dr. Phillip John Villani (The University of Melbourne, Australia) revised and corrected the English language used in this manuscript.

Summary

The objective of this study was to identify and report on the occurrence of Psylloidea damaging pink cedar, *Cedrela fissilis* Vell. (Meliaceae), plants in the municipality of Sorocaba, in the southern region of São Paulo State, Brazil. Psyllids were collected on *C. fissilis* plants, and sent to authorities for identification. Psyllids damaging *C. fissilis* plants in urban areas and fragments of semideciduous seasonal forest were identified as *Mastigimas anjosi* Burckhardt, Queiroz D., Queiroz E., Andrade, Zanol Rezende & Kotrba (Hemiptera: Psylloidea: Calophyidae), which is native to Brazil. *Cedrela fissilis* also is endemic to Brazil, and has high ecological and economic value. It is harvested for timber production and is on the endangered species list. This is the first report of *M. anjosi* damaging *C. fissilis* plants in São Paulo State, Brazil and the importance of this plant for conservation and ecological restoration areas in Brazil justifies research to develop management programs for this psyllid.

Key Words: biological control; forest pest; monitoring; population dynamics; sticky trap

Sumario

O objetivo desse estudo foi identificar e relatar a ocorrência de indivíduos de Psylloidea danificando cedro rosa, *Cedrela fissilis* Vell. (Meliaceae) em Sorocaba, São Paulo, Brasil. Psilídeos foram coletados em plantas de *C. fissilis*, acondicionados e enviados para identificação. O psilídeo danificando *C. fissilis* em áreas urbanas e em fragmentos de floresta estacional semidecidual foi identificado como *Mastigimas anjosi* Burckhardt, Queiroz D., Queiroz E., Andrade, Zanol Rezende & Kotrba (Hemiptera, Psylloidea, Calophyidae), nativo do Brasil. *Cedrela fissilis* é nativa do Brasil, tem elevado valor ecológico e econômico, é cortada para produção de madeira e está na lista de espécies ameaça-

das. Esse é o primeiro relato de *M. anjosi* danificando *C. fissilis* no estado de São Paulo, Brasil e a importância dessa planta em áreas nativas e de restauração ecológica do país justificam estudos visando o manejo desse psilídeo.

Palavras Chave: controle biológico; praga florestal; monitoramento; dinâmica populacional; armadilha adesiva

References Cited

- Burckhardt D, Queiroz DL, Queiroz EC, Andrade DP, Zanol K, Rezende MQ, Kotrba M. 2011. The jumping plant-louse *Mastigimas anjosi* spec. nov., a new pest of *Toona ciliata* (Meliaceae) in Brazil. *Spixiana* 34: 109–120.
- Burckhardt D, Queiroz DL, Drohojowska J. 2013. Revision of the neotropical jumping plant-louse genus *Mastigimas* (Hemiptera, Psylloidea) attacking *Cedrela* and *Toona* species (Meliaceae). *Zootaxa* 3745: 001–018.
- Carvalho PER. 2003. Espécies Arbóreas Brasileiras. Embrapa Informação Tecnológica, Embrapa Florestas, Colombo, PR, Brasil, 1040 p.
- Costa VA, Queiroz DL, Silva NA. 2015. *Psyllaephagus trioziphagus* (Hymenoptera: Encyrtidae), a *Mastigimas anjosi* parasitoid (Hemiptera: Calophyidae). *Pesquisa Florestal Brasileira* 35: 339–342.
- Ferreira-Filho PJ, Wilcken CF, Oliveira NC, Pogetto MHFAD, Lima ACV. 2008. Dinâmica populacional do psilídeo-de-concha *Glycaspis brimblecombei* (Hemiptera: Psyllidae) e de seu parasitóide *Psyllaephagus bliteus* (Hymenoptera: Encyrtidae) em floresta de *Eucalyptus camaldulensis*. *Ciência Rural* 38: 2109–2114.
- Hodkinson ID. 1989. The biogeography of the Neotropical jumping plant-lice (Insecta: Homoptera: Psylloidea). *Journal of Biogeography* 16: 203–217.
- IUCN. 2016. The IUCN Red List of Threatened species. International Union for Conservation of Nature. Available at: (<http://www.iucnredlist.org>). DOI: 10.2307/2845257. [Accessed Oct 25, 2016].
- Lisboa PB. 1994. Notes on South American Cedar (*Cedrela fissilis*) in the sacred art of Brazil. *IAWA (International Association of Wood Anatomists) Journal* 15: 47–50.
- Pereira LD, Fleig FD, Meyer EA, Lanzarin K, Wolf K. 2016. Susceptibility of cedar to pest attack in seasonally deciduous forest. *Pesquisa Agropecuária Brasileira* 51: 607–614.
- Pinheiro AL, Maragon LC, Paiva GLRM. 1990. Características fenológicas do cedro *Cedrela fissilis* Vell. em Viçosa, Minas Gerais. *Boletim de Pesquisa Florestal* 21: 21–26.
- Queiroz DL, Burckhardt D, Anjos N. 2013. Psilídeos no Brasil: 8 – *Mastigimas anjosi* (Hemiptera, Psylloidea), nova praga de *Toona ciliata* no Brasil. *Embrapa: Comunicado Técnico* 313, 7 p.