



## **Progress and Promise in using Arabidopsis to Study Adaptation, Divergence, and Speciation**

Authors: Hunter, Ben, and Bomblies, Kirsten

Source: The Arabidopsis Book, 2010(8)

Published By: The American Society of Plant Biologists

URL: <https://doi.org/10.1199/tab.0138>

---

BioOne Complete ([complete.BioOne.org](https://complete.BioOne.org)) is a full-text database of 200 subscribed and open-access titles in the biological, ecological, and environmental sciences published by nonprofit societies, associations, museums, institutions, and presses.

Your use of this PDF, the BioOne Complete website, and all posted and associated content indicates your acceptance of BioOne's Terms of Use, available at [www.bioone.org/terms-of-use](https://www.bioone.org/terms-of-use).

Usage of BioOne Complete content is strictly limited to personal, educational, and non - commercial use. Commercial inquiries or rights and permissions requests should be directed to the individual publisher as copyright holder.

---

BioOne sees sustainable scholarly publishing as an inherently collaborative enterprise connecting authors, nonprofit publishers, academic institutions, research libraries, and research funders in the common goal of maximizing access to critical research.

First published on September 29, 2010: e0138. 10.1199/tab.0138

# Progress and Promise in Using Arabidopsis to Study Adaptation, Divergence, and Speciation

Ben Hunter<sup>a</sup> and Kirsten Bomblies<sup>a,1</sup>

<sup>a</sup>Department of Organismic and Evolutionary Biology, Harvard University, 22 Divinity Ave., Cambridge, MA, USA

<sup>1</sup>Address for correspondence: kbomblies@oeb.harvard.edu

Fundamental questions remain to be answered on how lineages split and new species form. The *Arabidopsis* genus, with several increasingly well characterized species closely related to the model system *A. thaliana*, provides a rare opportunity to address key questions in speciation research. *Arabidopsis* species, and in some cases populations within a species, vary considerably in their habitat preferences, adaptations to local environments, mating system, life history strategy, genome structure and chromosome number. These differences provide numerous open doors for understanding the role these factors play in population divergence and how they may cause barriers to arise among nascent species. Molecular tools available in *A. thaliana* are widely applicable to its relatives, and together with modern comparative genomic approaches they will provide new and increasingly mechanistic insights into the processes underpinning lineage divergence and speciation. We will discuss recent progress in understanding the molecular basis of local adaptation, reproductive isolation and genetic incompatibility, focusing on work utilizing the *Arabidopsis* genus, and will highlight several areas in which additional research will provide meaningful insights into adaptation and speciation processes in this genus.

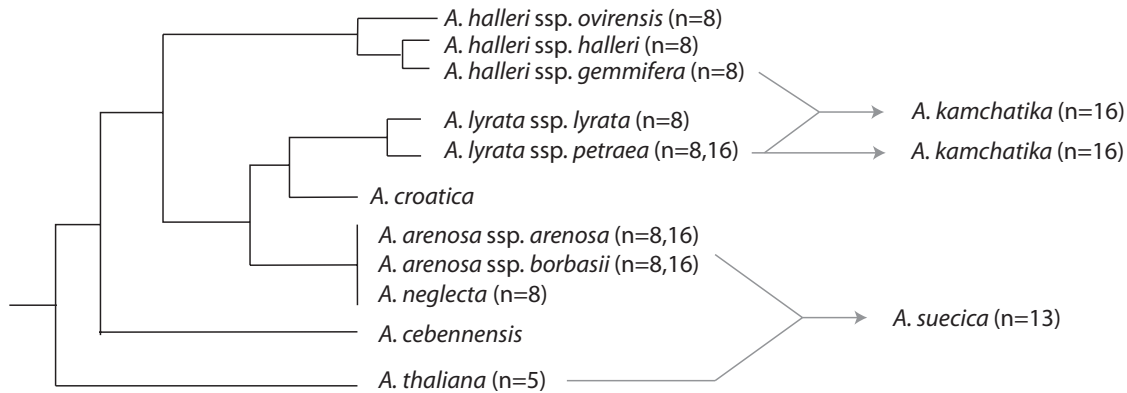
## INTRODUCTION

Explaining how the diversity of organisms populating Earth arises remains a fascinating challenge. Extensive progress has been made in recent years, and numerous informative reviews have been written on this topic (e.g. Coyne and Orr, 2004; Lowry et al. 2008a; Rieseberg and Willis, 2007; Rieseberg and Blackman, 2010; Schluter, 2009; Schluter and Conte, 2009; Sobel et al. 2009), and a number of conclusions can be drawn from work on speciation in recent decades. For example, it is increasingly clear that pre-zygotic barriers (factors that prevent mating), such as adaptation to divergent habitats or distinct pollinator preferences, likely play starring roles in diversification and speciation (Lowry et al., 2008a; Rieseberg and Blackman, 2010; Rieseberg and Willis, 2007; Schluter, 2009; Schluter and Conte, 2009; Sobel et al. 2009). Though they may contribute less to overall isolation, it is also clear that postzygotic barriers (e.g. genetic incompatibilities) also play an important role in restricting gene flow among species (Lowry et al., 2008a), and recent years have seen the identification of numerous causal genes, particularly in plants (Rieseberg and Blackman, 2010). It has been pointed out also that the majority of “speciation genes” identified to date are post-zygotic, and comparatively little is known about the molecular basis of pre-zygotic barriers (with the exception of pollinator preferences; Rieseberg and Blackman, 2010).

Implicit in contemporary views of speciation is the notion that ecological and genetic factors play important, and often inextricably intertwined roles in population divergence and isolation (e.g.

Lowry et al., 2008a; Rieseberg and Willis, 2007; Schluter, 2009; Schluter and Conte, 2009). Relevant factors in speciation thus include causes of population fragmentation and divergence (such as geographic barriers, temporal isolation or adaptations to different habitats), genes that mediate environmental adaptation, and the genetic barriers that accumulate between diverging populations, whether they result from selection or drift. This underscores the importance of gaining a detailed understanding of multiple aspects of species biology, including ecology, population genetic patterns, demographic history and the genetics of extrinsic or intrinsic reproductive isolating barriers. Perhaps most important (and in some ways most difficult) is to clearly assess and quantify current, and where possible historic impediments to gene flow. Such studies are still rare, but those that have been done provide insights into the relative importance of different barriers to gene flow in natural populations (Lowry et al., 2008a).

Molecular tools available in model systems can be extended with increasing ease to relatives, providing us with “model genera” or even “model families” (Bomblies and Weigel, 2007a, 2010; Crosby et al. 2007) that can help get around some of the biases inherent in studying just a single model species, while the relatedness to traditional models keeps open the door to a wealth of molecular tools. The *Arabidopsis* genus, with a manageable number of closely related, genetically tractable and sometimes inter-fertile species, provides excellent opportunities to study processes relevant to speciation in molecular detail (Bomblies and Weigel, 2007a, 2010). In this review, we will do two things: First, we will discuss work relevant to speciation and population divergence



**Figure 1:** Phylogeny of Arabidopsis genus based on Al-Shehbaz and O’Kane, 2002 and Hoffman, 2005. Chromosome numbers given are from Al-Shehbaz and O’Kane, 2002. Hybrid species are shown with grey arrows indicating parental species. Note that *A. kamchatika* originated both as a hybrid of *A. halleri* x *A. lyrata*, and as a polyploidy derivative of *A. lyrata*.

that has utilized the Arabidopsis genus either as a way of gaining molecular insight into barriers known from other species, or to understand barriers active in this genus. Second, we will point to ongoing and future opportunities for more fully capitalizing on the power of this genus for studies in speciation. Since previous reviews have covered additional aspects of speciation research in Arabidopsis, we will not cover all areas here (see Bomblies and Weigel 2007a, 2010).

### Species and Speciation History in the Arabidopsis Genus

The taxonomy, evolution and ecology of the Arabidopsis genus have been extensively reviewed (see e.g. Al-Shehbaz and O’Kane, 2002; Clauss and Koch, 2006; Hoffmann, 2005; Koch et al., 2008; Koch and Matschinger, 2007; Mitchell-Olds, 2001; Shimizu, 2002) and we will thus include only a brief summary here to provide context relevant for the remainder of the paper. Aside from several rare or locally endemic species, the Arabidopsis genus consists of four major lineages: *A. thaliana*, *A. lyrata*, *A. arenosa*, and *A. halleri* with the latter three each divided into two or more sub-species (Figure 1). Species in these Arabidopsis lineages generally have eight chromosomes, or sixteen in tetraploids, with the exception of *A. thaliana* which has 5 chromosomes, and *A. suecica*, which has 13 chromosomes (Al-Shehbaz and O’Kane, 2002). Most species are self-incompatible, though *A. thaliana*, *A. suecica* and *A. kamchatika* are self-fertile.

The earliest diverging lineage is *A. thaliana*, which split from the rest of the genus about 3.8-5 million years ago (MYA). The remaining species radiated approximately 2 MYA (Clauss and Koch, 2006; Hoffmann, 2005; Koch and Matschinger, 2007). *Arabidopsis thaliana* is primarily self-fertilizing and inhabits a variety of low competition habitats, primarily human-associated cultivated or waste areas, but also sparse meadows, rubble slopes and riverbanks (Al-Shehbaz and O’Kane, 2002). Being the model system of choice for many molecular biologists means that a genome sequence, a wealth of molecular information and exten-

sive resources are available. Large-scale genome sequencing and characterization efforts are adding to the store of knowledge about variation in genome sequences and organization, and opening the door to understanding how this correlates with phenotypic variation, poisoning *A. thaliana* to become an increasingly powerful tool for understanding the molecular basis of evolutionary processes (e.g. Clark et al. 2007; Weigel and Mott, 2009; Zhang et al. 2006).

*Arabidopsis lyrata* is perennial and is made up of two recognized geographically isolated subspecies: *A. lyrata* ssp. *petraea* occurs in Eurasia, while *A. lyrata* ssp. *lyrata* occurs in North America (Al-Shehbaz and O’Kane, 2002; Clauss and Koch, 2006). There are populations in temperate regions of Europe and North America, but *A. lyrata* is primarily an arctic species (Al-Shehbaz and O’Kane, 2002; Hoffmann, 2005). It is diploid ( $n=8$ ) throughout most of its range, but tetraploid ( $n=16$ ) populations are known from Austria (Dart et al., 2004). The *A. lyrata* genome has recently been sequenced, greatly facilitating molecular studies and opening numerous doors for detailed investigation of mechanisms relevant to speciation and adaptation (<http://genome.jgi-psf.org/Araly1/Araly1.info.html>).

*Arabidopsis arenosa* is currently divided into two recognized subspecies that both occur in Europe: ssp. *borbasii* tends to be perennial and inhabits mountainous or rocky habitats, while ssp. *arenosa* is annual or biennial and more often inhabits ruderal sites (Al-Shehbaz and O’Kane, 2002; Scholz, 1962). *Arabidopsis arenosa* is tetraploid ( $n=16$ ) through much of its range, but diploid populations ( $n=8$ ) are known from the Balkans and Carpathian mountains (MA Koch et al. personal communication; Měsíček, 1967; Schmickl and Koch *in preparation*). The genome of a diploid *A. arenosa* is also being sequenced, which will greatly expand the opportunities for comparative molecular approaches with multiple members of the Arabidopsis genus (Comai and Rokhsar et al.; <http://www.jgi.doe.gov/sequencing/statusreporter/psr.php?projectid=402430>).

*Arabidopsis halleri* is currently divided into five recognized sub-species (Koch et al., 2008; Kolník and Marhold, 2006). It is

diploid ( $n = 8$ ) and populations are patchily distributed throughout Eurasia (Hoffmann, 2005; Kolnik and Marhold, 2006). Unlike its congeners, *A. halleri* is tolerant of shading and competition and occurs primarily in mesic meadow habitats (Clauss and Koch, 2006; Pauwels et al., 2005). This species is also tolerant of high levels of heavy metals in soil, which has allowed it to invade many habitats polluted by human mining activities (Clauss and Koch, 2006).

Hybrid zones can be very important models for understanding processes of introgression, adaptation, speciation, and gene flow barriers (e.g. Barton and Hewitt, 1989; Rieseberg et al., 1999). In Eastern Austria tetraploid ( $n = 16$ ) populations of *A. arenosa* and *A. lyrata* co-occur and a hybrid zone has recently been found (Schmickl and Koch *in preparation*; MA Koch et al. personal communication), promising exciting opportunities to study the molecular and phenotypic consequences of gene flow and the mechanisms of maintenance of species barriers. There is molecular evidence of hybridization in several other *Arabidopsis* species as well, though no current hybrid zones have been identified. For example, there is evidence of historical gene flow between *A. halleri* and *A. lyrata* (Ramos-Onsins et al., 2004), though while crosses in the lab between these species are possible, hybrid fitness is lower than that of the parents. This suggests that intrinsic incompatibilities have arisen since their divergence, which may explain why there are no modern hybrid zones known (Ramos-Onsins et al., 2004). Gene flow also seems to have occurred historically between *A. arenosa* and *A. croatica* (Koch and Matschinger, 2007).

Hybridization can also give rise to new species. This mechanism is thought to be a very important factor in plant speciation (Buerkle et al. 2000; Hegarty and Hiscock, 2005). The *Arabidopsis* genus contains two hybrid species that provide interesting models (Figure 1): A single hybridization event between *A. thaliana* and *A. arenosa* spawned a natural allopolyploid hybrid species, *A. suecica*, with 13 chromosomes, eight of which come from *A. arenosa*, and five from *A. thaliana* (Hylander, 1957; Jakobsson et al., 2006; Měsíček, 1967; Säll et al., 2003). *Arabidopsis kamchatika* is a more recently recognized hybrid *Arabidopsis* species that seems to have arisen via several independent hybridization events between *A. halleri* ssp. *gemmifera* and *A. lyrata* in Eastern Asia, though some lineages recognized as *A. kamchatika* appear to be autopolyploid derivatives of *A. lyrata* (Clauss and Koch, 2006; Koch and Matschinger, 2007; Schmickl et al., 2010; Shimizu-Inatsugi et al., 2009; Watanabe et al., 2005).

Overall, the species in the *Arabidopsis* genus provide many opportunities for studying processes relevant to adaptation, divergence and speciation. In this review we will discuss how they have already contributed to our understanding of these processes, as well as where more research is needed. Table 1 provides a list of gene flow barriers relevant to plants, primarily following previously utilized classification schemes (e.g. Coyne and Orr, 2004; Rieseberg and Blackman, 2010), and provides a brief summary of what is known in the *Arabidopsis* genus, which will be discussed in more detail below, as well as pointing out areas where more research is needed.

**Table 1.** Barriers relevant to plant speciation

Timing relative to fertilization	Type of barrier	Information in <i>Arabidopsis</i> genus
Prezygotic	Habitat/Substrate	Much variation in habitat exists; species rarely co-occur in botanical surveys. Characterization and quantification of habitat isolation needed.
	Mechanical	No reports in <i>Arabidopsis</i> .
	Temporal	Plenty of “raw material” (natural variation for flowering time) (1); no report to date of genetic isolation due to differences in timing, but quantification needed.
	Pollinator	No pollinator isolation reported among <i>Arabidopsis</i> species.
	Mating system	<i>A. thaliana</i> , <i>A. suecica</i> and <i>A. kamchatika</i> are self-fertilizing while others are mostly outcrossing (2). May yield imprinting imbalances as well as unilateral pollination barriers (3). Mating system change is unlikely to be primary speciation cause in <i>A. thaliana</i> .
	Pollen recognition	Numerous studies have investigated species-specificity of pollen recognition in <i>Arabidopsis thaliana</i> (4). Self-incompatible <i>A. arenosa</i> and <i>A. lyrata</i> cannot be pollinated by <i>A. thaliana</i> (5). Other between-species pollen barriers likely exist, but not extensively investigated.
Post-zygotic	Ecological inviability	No cases reported in <i>Arabidopsis</i> , testing needed.
	Intrinsic inviability	Within-species examples in <i>A. thaliana</i> (6). Between-species examples of seed failure in <i>arenosa-thaliana</i> crosses (7). <i>A. lyrata</i> / <i>A. halleri</i> hybrids have reduced $F_1$ vigor, cause unknown (8).
	Sterility	No genic sterility cases characterized in <i>Arabidopsis</i> . Chromosomal/ploidy-related sterility abundant examples (9), centromere divergence may also be involved (10).

**Table 1 notes:** Barrier classifications follow previous publications (e.g. Coyne and Orr, 2004; Rieseberg and Blackman, 2010). References cited in table: (1) Gazzani et al., 2003; Lempe et al., 2005; Koornneef et al., 1998; Riihimäki & Savolainen, 2004; Sandring & Agren, 2009; Sandring et al., 2007, (2) Clauss & Koch, 2006; Al-Shehbaz & O’Kane, 2002; Säll et al., 2005; Shimizu-Inatsugi et al., 2009, (3) Brandvain & Haig, 2005, (4) Palanivelu & Preuss, 2006, (5) Comai, 2005, (6) Alcazar et al., 2009; Bikard et al. 2009; Bomblies et al., 2007, (7) See text in section “Polyploidy,” (8) Ramos-Onsins et al., 2009, (10) See text in section “Polyploidy,” Henikoff et al., 2001.

## PREZYGOTIC FACTORS

**Edaphic adaptation:** Adaptations to habitat or soil type differences (edaphic adaptation) may be very important in divergence and ecological speciation in plants (Schluter, 2009; Schluter and Conte, 2009; Rajakaruna, 2004; Rieseberg and Willis, 2007). While several genes important for adaptation are known, it has yet to be demonstrated whether these adaptations lead to reproductive isolation; thus genes that might truly be considered “edaphic isolation genes” remain as yet unknown (Rieseberg and Blackmann, 2010). The Arabidopsis genus provides excellent opportunities in this area. Despite extensive range overlap and broad similarities in habitat preferences, botanical surveys rarely name multiple Arabidopsis species co-occurring in the same plant communities. This suggests that at least some habitat isolation exists among these species. It will be crucial for future research in speciation in this genus to investigate which local adaptations lead to gene flow barriers among species or populations in nature.

Arabidopsis species have colonized a wide range of primarily low-competition habitats. *Arabidopsis lyrata*, for example, occurs in sand dunes, tundra, stream banks, lakeshores, and rocky slopes, and can be found on calcareous/alkaline substrates (e.g. limestone, dolomite or gypsum), siliceous/acidic substrates (e.g. sandstone and granite), and even serpentine (Al-Shehbaz and O’Kane, 2002; Černý et al., 2006; Clauss and Koch, 2006; Stelfox, 1970; Turner et al., 2008). It occurs from temperate regions into the high arctic (Hoffmann, 2005). These habitats likely vary in numerous important factors, such as nutrient content and availability, rhizosphere communities, temperature, light incidence, growing season length, competition, and pathogen and herbivore prevalence. The closely related *A. arenosa* is also found in a diverse array of habitats (Boublík et al., 2007; Clauss and Koch, 2006; Husová, 1967; Justin, 1993; Polatschek, 1965), but has also adapted to more extreme substrates than those reported for *A. lyrata*, such as strongly acidic soils (Lawesson and Mark, 2000) and heavy metal contaminated sites (Kucharski et al., 2005; Przedpelska and Wierzbicka, 2007). *Arabidopsis halleri* is unusual in that it is tolerant of shading and can fare well in high competition habitats such as mesic meadow sites (Clauss and Koch, 2006; Pauwels et al., 2005). There are many adaptations that are no doubt relevant to gene flow in and among Arabidopsis species - for example, adaptation from ancestral alpine habitats to lower altitude habitats was likely important in the diversification of *A. arenosa* and *A. halleri* subspecies (Al-Shehbaz and O’Kane, 2002).

Little is known in this genus about the role of edaphic factors in isolating gene pools. However, Arabidopsis species have already provided important insights into the molecular mechanisms of adaptation, which provide valuable information for filling out future studies of edaphic isolation. Adaptation to challenging substrates has been particularly well studied. As an illustrative example, we will discuss heavy metal tolerance and accumulation in *A. halleri*, which is an adaptation that is especially well understood at the molecular level (Bert et al., 2002; Macnair, 2002; Macnair et al., 1999). In *A. halleri*, adaptation to metal-contaminated sites has occurred multiple times, indicating a predisposition to achieving this ecological transition (e.g. Bert et al., 2002; Pauwels et al., 2005; Punz and Mucina, 1997). Several genes important in adaptation to heavy metal-containing soils have been identified. For example, *HMA4* is a metal transporter that contributes to Zn and Cd toler-

ance differences between *A. lyrata* and *A. halleri* (Courbot et al., 2007; Hanikenne et al., 2008; Willems et al., 2007); its ortholog is also implicated in heavy metal tolerance and hyperaccumulation in *T. caerulea* (Bernard et al., 2004; Papoyan and Kochian, 2004). Non-tolerant species and *A. halleri* differ in *HMA4* expression, with the higher level in *A. halleri* attributable to a combination of gene copy number increase and cis-regulatory changes (Hanikenne et al., 2008). Another zinc transporter, *MTP1*, and at least two additional genes implicated in hypertolerance also show evidence of copy number and expression level increases (Dräger et al., 2004; Talke et al., 2006). Adaptation in *A. lyrata* to another challenging substrate, serpentine soil, also showed evidence of copy number expansion in several substrate-associated genomic regions, though causal genes remain to be characterized (Turner et al., 2008; Turner et al., 2010). Salt tolerance in *A. thaliana* accessions was similarly traced to a natural variant with altered expression in root tissues of the sodium transporter *HKT1* (Rus et al., 2006). These studies suggest that expression changes of causal genes already found in ancestral populations will be a common theme at least in substrate adaptation. To what degree these confer gene flow barriers, and whether the effects are direct or indirect, provides interesting questions for follow-up studies.

In the future, traditional QTL mapping (where crosses are possible), and high throughput genomic approaches will likely provide additional insights into adaptation to the diverse habitats in which Arabidopsis species are found. TILING-array analysis and high-throughput sequencing of genotypes inhabiting alternate habitats can be used to identify genomic regions differentiated by habitat, providing a list of candidate loci that can be tested for involvement in local adaptation and habitat isolation (e.g. Turner et al., 2008; Turner et al., 2010). One important example likely to contribute significantly to our understanding of substrate adaptation in particular is “ionomics” - a strategy designed specifically to accelerate the identification of the genetic basis of nutrient acquisition (Baxter, 2009; Salt et al., 2008). While these approaches have been currently applied primarily to soil adaptations, there is no reason that modified strategies could not be employed for studying adaptations to other environmental factors, such as shading, temperature, altitude, moisture availability, and pathogen or herbivore repertoires. Large-scale approaches hold promise for speeding up the identification of the molecular basis of habitat adaptations. When combined with studies of how these adaptations in turn affect gene flow, such studies will greatly expand our understanding of how edaphic adaptation and gene flow barriers may inter connect.

**Plasticity and trade-offs in temporal isolation:** Gene flow barriers due to temporal non-overlap of reproduction may be very important in speciation and maintenance of species boundaries in both animals and plants (Coyne and Orr, 2004). There is abundant evidence in the plant literature of differences in flowering time among populations or related species leading to non-overlapping flowering times. In numerous examples flowering time differences are associated with edaphic adaptations (e.g. examples in Hall and Willis, 2006; Levin, 2009; Lowry et al., 2008b; Savolainen et al., 2006; Silvertown et al., 2005; Snaydon and Davies, 1982). For example, recent speciation of palms on Lord Howe island seems to have involved both adaptation to distinct substrates, and associated flowering time differences (Savolainen et al., 2006), and a long-term study on *Anthoxanthum odoratum* populations growing under distinct artificially-applied edaphic regimes

showed significant local adaptation within 150 years (Snaydon and Davies, 1982) and sometimes also associated differences in flowering time (Silvertown et al., 2005). The two Lord Howe Island palm species are especially intriguing. They have strong reproductive isolation with almost no overlap in flowering times, but reproductive isolation in this case arises from a plastic response to the environment – if the now-diverged palms happen to co-occur on the same substrate, the flowering time difference disappears (Savolainen et al., 2006). Plastic responses to the environment can promote divergence if growth on different substrates is inextricably (e.g. physiologically) linked to divergence in flowering time. This may be a very important factor in plant speciation (Levin, 2009). A mathematical model built on the Howe Island palm scenario suggested that speciation indeed becomes particularly likely when there is a direct environmental effect on flowering time and a small number of loci involved in adaptation (Gavrilets and Vose, 2007).

The Arabidopsis genus provides tests for the predictions of these ideas. While we are not aware of direct evidence in the Arabidopsis genus of temporal isolation restricting gene flow among Arabidopsis species or populations, the raw material – genetic variation for flowering time – is widely available, at least in *A. thaliana* (e.g. Gazzani et al., 2003; Koornneef et al., 1998; Lempe et al., 2005) and *A. lyrata* (Riihimäki and Savolainen, 2004; Sandring and Agren, 2009; Sandring et al., 2007). In *A. thaliana* the genetic basis of flowering time regulation has been intensely investigated with mutants as well as natural variants (see for reviews e.g. Koornneef et al., 1998; Simpson and Dean, 2002; Yant et al., 2009), and it is clear that a small number of mutations can have a large impact on flowering time, as is predicted to facilitate speciation in the Gavrilets and Vose models (2007).

Given that temporal isolation is also greatly aided if there is developmental plasticity of flowering time in response to environmental cues that differ among habitats, it is intriguing that a number of different abiotic factors (e.g. soil type, nutrient availability, pH, moisture, and temperature) can alter maturation and flowering times in a wide range of species (see Levin, 2009; Wielgolaski, 2001). In *A. thaliana* environment can also directly affect flowering time, and provides the rare opportunity to understand the molecular basis of this plasticity (e.g. Juenger et al., 2005; Lempe et al., 2005; Pigliucci and Schlichting, 2002; Stinchcombe and Schmitt, 2004; Wilczek et al., 2009). Several studies have highlighted the importance of hormones in linking environment and flowering time. For example, salicylic acid (SA), which is induced by environmental or pathogen stress, can accelerate flowering (Korves and Bergelson, 2003; Martínez et al., 2004). Elevated SA also increases tolerance of some abiotic stresses (e.g. high heavy metal content in soil or drought), but can decrease tolerance of other stresses (e.g. temperature and salinity; Chini et al., 2004; Freeman et al., 2005). Natural accessions differ in their level of response to SA (van Leeuwen et al., 2007), suggesting that the utility of SA signaling for adaptation, and thus the magnitude of any effects of edaphic factors on flowering time will likely vary among strains. In contrast to SA, Nitric oxide (NO), whose production is also induced by various biotic and abiotic stresses, delays flowering (He et al., 2004). This knowledge gives a good framework for understanding and interpreting patterns observed in the wild in other species.

Alternative strategies for adaptation to similar environments could also conceivably lead to reproductive isolation during popu-

lation divergence (“non-ecological speciation”; Schluter, 2009). In *A. thaliana*, experimental evidence exists supporting the plausibility of this in flowering time differentiation: A trade-off between drought escape via early flowering and drought resistance via water use efficiency is caused by pleiotropic effects of flowering-time genes (McKay et al., 2003). This means that two viable alternate adaptation strategies (escape by early flowering versus tolerance due to increased water use efficiency) to the same environmental challenge (drought) could result in temporal isolation as a pleiotropic effect of environmental adaptation. Whether these differences isolate populations in nature remains to be tested.

Given how much is known about the mechanisms of flowering time regulation and plasticity in Arabidopsis, it will be interesting to investigate whether temporal isolation occurs in this genus in nature.

**Mating system:** Mating system differences may affect gene flow among diverging populations and could thus isolate nascent lineages (Grant, 1971; Jain, 1976; Rieseberg and Willis, 2007). In the related genus *Capsella*, speciation of *C. rubella* is attributable to the isolation due to self-fertilization arising in a single individual (Foxe et al. 2009; Guo et al. 2009). In the Arabidopsis genus, there are three self-fertilizing species: *A. thaliana*, *A. suecica* and *A. kamchatika*. In the case of *A. thaliana*, the transition to self-fertilizing is estimated to have occurred between 400,000 and 1 million years ago (Bechsgaard et al., 2006; Tang et al., 2007), and multiple alleles of the self-incompatibility locus still exist, speaking against a selective sweep as observed in *Capsella rubella* (Boggs et al., 2009; Sherman-Broyles et al., 2007; Tang et al., 2007). These findings argue that the loss of self-incompatibility is unlikely to have been the primary cause of speciation of *A. thaliana*, though it may have contributed to strengthening isolation at later stages. For *A. kamchatika* and *A. suecica* the timing of the origin of selfing relative to speciation is unknown, but it is possible that, as has been previously observed for hybrids in Arabidopsis and *Capsella*, selfing may have arisen in these species as a direct consequence of polyploidization and/or hybridization via epigenetic silencing of the self-incompatibility locus (Nasrallah et al., 2007). In these instances, the transition to self-fertilization may indeed contribute directly to speciation. Transitions from self-incompatibility to self-fertility are commonly observed in association with polyploid speciation (Comai, 2005).

**Species-specificity of pollination:** Fertilization is often highly species-specific and rapid evolution of species-specificity in gamete recognition and fertilization is observed in virtually all taxa that have been examined (Clark et al., 2006; Swanson et al., 2004; Swanson and Vacquier, 2002). Several hypotheses have been put forth to explain the extremely rapid evolution of proteins involved in reproduction, including gamete competition, sexual selection, and sexual conflict (Brandvain and Haig, 2005; Clark et al., 2006; Swanson et al., 2004; Swanson and Vacquier, 2002). Under these models, reproductive isolation arises as a by-product.

In plants, species-specificity of gamete recognition is mediated at numerous stages during pollination, including adhesion, germination, pollen tube growth, and guidance to the ovules (Swanson et al., 2004). While any of these barriers individually may not provide complete isolation, acting together they can confer strong species-specificity. In the absence of strong barriers, there is still commonly an advantage of conspecific pollen over heterospecific pollen in mixed matings (conspecific pollen precedence), which may also be a very important factor in isolation and speciation (Howard, 1999).

Arabidopsis species, especially *A. thaliana*, have been used to investigate the molecular mechanisms resulting in species-specificity of pollen recognition. Pollen of other Arabidopsis species can germinate successfully on *A. thaliana* stigmas (Palanivelu and Preuss, 2006), suggesting that primary recognition events are unlikely to have contributed to speciation. Pollen tube growth and guidance to the ovules, however, do decline with phylogenetic distance (Palanivelu and Preuss, 2006). That immature pistils show much less ability to discriminate pollen than mature pistils, suggests that there is an active production during pistil maturation of factors important for favoring conspecific pollen or inhibiting heterospecific pollination (Kandasamy et al., 1994).

Ovules are known to emit signals that attract pollen tubes, and the ability to respond to these signals declines so rapidly with phylogenetic distance that even *A. arenosa* ovules are noticeably less capable of attracting *A. thaliana* pollen tubes than are *A. thaliana* ovules (Palanivelu and Preuss, 2006). Recent work in *Torenia fournieri* has shed some light on the molecular identity of a highly species-specific pollen tube attractant produced by the synergid cells of the ovules (Higashiyama et al., 2006). This signal consists of a cocktail of secreted cysteine-rich proteins named *LUREs*, which are related to a diverse class of proteins called defensins (Okuda et al., 2009). Female gametophytes of Arabidopsis and maize also express large numbers of diverse defensin-related proteins (Cordts et al., 2001; Jones-Rhoades et al., 2007; Punwani et al., 2007; Yang et al., 2006), suggesting that this type of signal is widely utilized, and that the particular mixture produced may confer high specificity. In the Arabidopsis genus the ease of genetic manipulation will provide ample opportunity to test the roles that genetic diversity of these defensin-like molecules may play in mediating the specificity of pollination.

Another gene that has been suggested to confer species-specificity in the final stages of pollination of *A. thaliana* is a receptor-like kinase, *FERONIA* (*FER*). Plants mutant for *FER* show a phenotype of pollen tube overgrowth and fertilization failure that is phenotypically similar to that observed in interspecies crosses onto *A. thaliana* (Escobar-Restrepo et al., 2007). The extracellular domain of *FER* appears to be rapidly evolving; it is highly divergent between *A. thaliana* and *A. lyrata* (Escobar-Restrepo et al., 2007) as well as among populations of *A. lyrata* (Gos and Wright, 2008). That sequence divergence of *FER* plays a role in interspecies barriers is certainly plausible from these findings, but remains to be formally demonstrated.

These patterns suggest that pollination barriers may evolve sufficiently rapidly to play a crucial role in species-barriers in the Arabidopsis genus. The degree to which the multiple steps of the pollen recognition process play a role in gene flow in Arabidopsis in the wild has not, to our knowledge, been quantified.

## POSTZYGOTIC FACTORS

### The Role of Chromosomal Differences in Hybrid Sterility and Inviability

**Polyploidy:** Polyploidy is thought to be one of the major mechanisms of speciation in plants, and one of the few by which reproductive isolation may be essentially instant, since interploidy crosses often fail or produce hybrids that are sterile due to mei-

otic aberrations (Comai, 2005; Coyne and Orr, 2004; Levin, 2002). Though meiotic problems associated with interploidy crosses do present a strong barrier to gene flow, many species vary in ploidy without being considered separate. This is true for at least three species within the Arabidopsis genus – *A. thaliana*, *A. lyrata* and *A. arenosa* all show natural variation in ploidy without taxonomic recognition as separate species (Al-Shehbaz and O’Kane, 2002). *Arabidopsis thaliana* and its relatives have provided excellent systems for studying the immediate and longer-term consequences of polyploidy and interploidy crosses both within and between species (Comai et al., 2000; Comai, 2005).

Tetraploid *A. thaliana* plants are fully viable, fertile and barely distinguishable from diploids (Koorneef et al., 2003) as is also true of *A. lyrata* and *A. arenosa* tetraploids. Diploid and tetraploid *A. thaliana* can be crossed to produce viable triploids (Scott et al., 1998), allowing quantification of the degree to which ploidy changes can cause gene flow barriers via triploid sterility or other mechanisms. Triploids in *A. thaliana* have reduced fertility, as predicted, but they are not completely sterile (Henry et al., 2005). When selfed, they spawn aneuploid swarms with a wide range of phenotypes, variable fertility and genomic instabilities (Henry et al., 2005; Huettel et al., 2008). After several generations, descendant populations resolve into stable diploid and tetraploid groups (Henry et al., 2005). Discrete genetic loci are associated with aneuploid propagation success, implying that some genotypes are more likely than others to contribute to gene flow across ploidy barriers (Dilkes et al., 2008; Henry et al., 2007; Henry et al., 2009). This work demonstrates that ploidy barriers are not impenetrable to gene flow.

Much is known about why interploidy crosses sometimes fail to produce viable progeny in Arabidopsis. Reciprocal interploidy crosses have different effects on endosperm development: An excess of the maternal genome results in an underdeveloped endosperm in the hybrid seed, while an excess of the paternal genome causes the endosperm to over-proliferate, the severity of which correlates with relative parental genomic doses (Scott et al., 1998). DNA methylation has been implicated as a major factor in this type of hybrid failure - the effect of paternal genome excess can be phenocopied if the maternal (but not the paternal) genome is hypomethylated (Adams et al., 2000).

**Barriers to allopolyploid formation:** In interspecies crosses differing in chromosome number (due either to differences in ploidy or a different base chromosome number), very similar patterns of seed failure due to endosperm imbalance are often observed (Haig and Westoby, 1991). For studying the mechanisms underlying this, work in the Arabidopsis genus has again provided many insights. Work in this area has focused on hybrids between *A. thaliana* ( $n=5$ ) and *A. arenosa* ( $n=8$  or  $16$ ). Though diploid *A. thaliana* can be readily fertilized by tetraploid *A. arenosa*, most of the resulting seeds abort (Comai et al., 2000). As was observed with *A. thaliana*, hybrid seed lethality in these interspecies crosses worsens if the maternal (*A. thaliana*) genome is hypomethylated, suggesting a role for epigenetic regulation in this type of hybrid failure (Bushell et al., 2003).

In crosses between *A. thaliana* and *A. arenosa*, an increase in expression of maternal (*A. thaliana*) genes that are normally expressed only from paternal copies is correlated with an increase in relative paternal (*A. arenosa*) genome dosage (Josefsson et al., 2006; Walia et al., 2009). Seed viability is increased when the

*A. thaliana* parent is homozygous for a mutation in one of these genes, *PHERES1* (*PHE1*), demonstrating that this mis-regulation of imprinted genes plays a causal role in this type of incompatibility (Josefsson et al., 2006). Normally, maternal *PHE1* expression is suppressed in *A. thaliana* by a maternally expressed polycomb group protein *MEDEA* (*MEA*) (Gagliardini et al., 2005; Köhler et al., 2003; Makarevich et al., 2006). It has been proposed that in hybrids excess paternal genome sequesters much of the maternally expressed *MEA* with the result that an insufficient amount remains to suppress maternal *PHE1* expression. This is consistent with the “Dosage-Dependent Induction (DDI)” model, which suggests that regulatory molecules are produced in proportion to genome size or copy number and that hybrids can be compromised if one parental genome cannot suppress deleterious expression of genes from the other parent due to insufficient production of regulatory factors (Erilova et al., 2009; Josefsson et al., 2006). A recent genome-wide study of DNA methylation in the endosperm of *A. thaliana* helped uncover five additional imprinted genes and about 50 candidates (Gehring et al., 2009). It will be interesting to see whether any of these genes are also misregulated to ill effect during hybrid seed development. Consistent with a possible role for epigenetic factors regulating seed development in hybridization barriers, *MEA* appears to be evolving under diversifying selection (Miyake et al., 2009). This fits with the idea that imprinting can arise from parental conflicts, which drive rapid gene evolution (Haig and Westoby, 1991; Wilkins and Haig, 2003). Self-fertilization is expected to affect selection for imprinting (Brandvain and Haig, 2005), thus it would be especially interesting in this context to examine whether imprinting-related incompatibility affects hybrids involving *A. thaliana* differently from hybrids among outcrossing members of the genus.

Short interfering RNAs (siRNAs) may also play an important role in hybrid seed failure. Many siRNAs produced from transposons and other repetitive sequences are important in their silencing (Matzke et al., 2009). Recently, it has been demonstrated that many siRNAs are expressed only from the maternal genome in the endosperm (Mosher et al., 2009). Plants defective in the production of these siRNAs show transcription of some transposons, though within *A. thaliana* this leads to no obvious defects (Mosher et al., 2009). Paternally derived transposon siRNAs of a different size class are produced in pollen grains (Slotkin et al., 2009) and it is thought that they may function in coordination with maternally-derived siRNAs to suppress transposon expression (Martienssen, 2010). The combination of maternal and paternal transposon-derived siRNAs may not function together correctly in interspecies hybrids, or may not be produced in adequate quantities to silence transposons from both parental genomes. These possibilities are intriguing, as improper silencing of transposons has been shown to negatively impact interspecies hybrids. For example, in *Drosophila*, highly deleterious activation of paternal transposons occurs in hybrids among strains in which only the father carries P-element transposons, because the mother lacks the transposon siRNAs necessary to silence them in the fertilized egg and developing embryo (Blumenstiel and Hartl, 2005). Interspecies hybrids in rice and evening primrose similarly have high levels of transposon activity, which leads to a high mutation rate and varied morphological defects in subsequent progeny (Wang et al., 2009). In interspecies hybrids in both banana and petunia, inadequate silencing in hybrids can lead to activation of integrat-

ed pararetroviruses, which can generate active infections (Harper et al., 1999; Ndowora et al., 1999; Richert-Poggeler et al., 2003). In *A. thaliana* x *A. arenosa* hybrid seeds, expression of paternal *ATHILA* transposons is elevated proportional to the severity of genome imbalance and correlates with seed failure (Josefsson et al., 2006; Madlung et al., 2005). The *A. arenosa* genome contains more *ATHILA* elements than the *A. thaliana* genome and thus the amount of maternally produced *ATHILA* repressing elements (probably siRNAs) may not suffice to silence the *A. arenosa* elements in hybrid seeds (Josefsson et al., 2006).

Problems can also arise later in allopolyploid hybrid plants that have survived the initial seed development hurdle. Hybrid *A. thaliana* x *A. arenosa* plants often exhibit reduced fitness, low fertility and developmental abnormalities. Differences in gene and siRNA expression among hybrids, and between hybrids and the parent plants, help to explain the reduced fitness as well as phenotypic variation (Ha et al., 2009; Wang et al., 2006b). Multiple chromosomal rearrangements and segmental losses observed in *A. thaliana* x *A. arenosa* hybrids may be a main cause of meiotic abnormalities, the prevalence of which in turn is inversely proportional to pollen viability (Madlung et al., 2005; Pontes et al., 2004). It has been suggested that increased transposon activity in allopolyploids causes chromosomal breaks, which lead to joining of homeologous chromosome segments (Pontes et al., 2004). Homeologous recombination could also be an explanation for the observed fusion of homeologous chromosomes, but this remains to be demonstrated (Madlung et al., 2005).

**Allopolyploidy as an opportunity:** In some cases, crosses between species with different chromosome numbers can give rise to stable allopolyploid hybrids, with a full genome complement from each parent (Hegarty and Hiscock, 2005; Mallet, 2007; Rieseberg and Willis, 2007). Allopolyploidy is commonly observed in nature and may be a common mode of speciation in plants (Leitch and Leitch, 2008). *Arabidopsis thaliana* x *A. arenosa* hybrids, replicating the cross that gave rise to *A. suecica*, can easily be produced in the laboratory. Though first generation hybrids often have reduced viability and low fertility, stable, fertile lines can be generated and have provided useful models for studying hybridization and early events following allopolyploidy (Comai et al., 2000).

Nonadditive gene expression observed in resynthesised *A. suecica* can confer novel traits and provide the nascent allopolyploid hybrid species with novel habitat and help isolate it and protect it from parental lineages. For example, interaction of a flowering time regulator from an *A. thaliana* accession with one from an *A. arenosa* accession causes significantly delayed flowering in inter-species hybrid plants relative to either parent (Wang et al., 2006a, 2006b). Such a change in flowering time could impose a significant prezygotic gene flow barrier. The allotetraploid species *A. kamchatica* also enjoys a far broader range of climates than its parents (Hoffmann, 2005) allowing it to exploit more habitats and develop geographic isolation from its parents. That hybrid species may have novel adaptive potential that can provide the nascent species a novel niche and an easy route to limiting gene flow with parental populations is well known, especially from wild sunflower species (Rieseberg et al., 2003; Schwarzbach et al., 2001; Ungerer et al., 1998;). The Arabidopsis genus has already been providing the opportunity to uncover molecular details of this speciation mechanism.



**The potential role of centromeres in hybrid sterility:** Evolutionary divergence of centromere sequences and associated proteins could cause aberrant chromosome segregation in hybrids, and thus, meiotic instability and hybrid sterility. The centromeric repeats and associated proteins make up part of the kinetochore (a protein-based structure that connects the centromere to the spindles), which is essential for proper meiotic and mitotic cell division. A complex interaction exists between the sequence of the repeats, the chromatic state, and the kinetochore proteins of the centromere (Dawe and Henikoff, 2006). Hybrids of species with diverged centromeres and centromeric proteins may exhibit reduced fitness due to unequal behavior of centromeres during cell division, which could lead to nondisjunction (Henikoff et al., 2001). In *Drosophila* species, rapid evolution of heterochromatic repeats and associated proteins can contribute to hybrid sterility by disrupting chromosome segregation (Bayes and Malik, 2009; Ferree and Barbash, 2009). The role that centromeres and associated, perhaps adaptively evolving proteins might play in speciation is an intriguing question and one that certainly merits further exploration.

A main component of most plant and animal centromeres is a repeated sequence usually around 180 base pairs in length. Analysis of the centromeric repeat sequences of different Arabidopsis species demonstrated that each species has its own unique repeat sequence or a characteristic combination of different repeats (Heslop-Harrison et al., 2003; Kamm et al., 1995; Kawabe and Nasuda, 2005). Proteins specifically associated with the centromeric repeats are surprisingly divergent between *A. thaliana* and *A. arenosa* and there is evidence that they are rapidly evolving (Talbert et al., 2002; Talbert et al., 2004). Furthermore, there has been a burst in the number of LTR retrotransposons in *A. lyrata* and *A. halleri* compared to *A. thaliana* and most of these are found in the centromeres (Tsukahara et al., 2009). Centromere transposon complements have been shown to vary considerably in abundance and type even between closely related species (Hawkins et al., 2006; Vitte and Bennetzen, 2006). Thus the idea that centromere evolution can contribute to gene flow barriers among species in the Arabidopsis genus is enticing, though a formal demonstration that this contributes to speciation in this genus is still lacking.

### Genic Causes of Hybrid Sterility or Inviability

**Segregation distortion:** Segregation distortion (SD), also known as transmission ratio distortion, has been used throughout the speciation literature as a way of identifying genomic regions that might contribute to genetic isolation between populations or species (e.g. Bradshaw et al., 1998; Fishman et al., 2008; Fishman et al., 2001; Hall and Willis, 2005; McDaniel et al., 2007; Myburg et al., 2004; Orr and Irving, 2005; Yin et al., 2004). SD is conceptually simple - a deviation from expected Mendelian segregation ratios in a particular region of the genome - but in practice, interpreting SD and its causes can be complex. SD may be caused by diverse factors, including segregation of genetic incompatibilities, chromosomal rearrangements, nuclear cytoplasmic incompatibility, meiotic drive, fitness differences that lead to differential survival, and/or inadvertent human selection during line generation (especially in approaches such as recombinant inbred line construction where multiple generations are successively propagated). SD can arise

due to selection during the haploid (gametic) phase (e.g. through differences in fertilization success) or in the diploid (zygote) stage (e.g. through genetic incompatibilities or maladaptation).

Progeny of crosses within *A. thaliana* commonly show SD (e.g. Balasubramanian et al., 2009; Clercx et al., 2004; el-Lithy et al., 2006; Liu et al., 1996; McKay et al., 2008; Törjek et al., 2006; Wilson et al., 2001). This has been primarily a nuisance factor in mapping experiments and thus only a few studies addressed the underlying causes. However, SD among strains within a species may be of interest in speciation research, because it could indicate early-arising incompatibilities. To date all SD cases within *A. thaliana* for which causes have been identified result from genetic incompatibilities. In crosses between the Col and C24 accessions, for example, two unlinked loci interact epistatically to cause severely reduced male fertility in complementary homozygotes (Törjek et al., 2006). The causal genes remain to be identified, but will provide an interesting insight into how male sterility, a common and probably early-arising type of between-species incompatibility (Coyne and Orr, 2004), may originate as within-species variation. In another case, segregation distortion results from the loss of alternate copies of a duplicated essential gene leading to embryo lethality in complementary double homozygotes (Bikard et al., 2009), supporting the idea that loss of alternate copies of a duplicated essential gene in different lineages could lead to incompatibility (Lynch and Force, 2000). Some cases of segregation distortion in *A. lyrata* appear to arise from linkage of deleterious mutations that affect pollen performance to the self-incompatibility (SI) locus. Since at the SI locus rare alleles have a mating advantage, haplotypes carrying linked deleterious alleles are difficult to purge from the population and can result in gamete-level SD and long-term balancing selection (Bechsgaard et al., 2004; Leppälä et al., 2008). Similar hitchhiking of deleterious mutations possibly leading to balancing selection has been suggested to occur at MHC locus alleles in humans - the high diversity, heterozygosity and low recombination, all features shared with the S-locus, render purifying selection inefficient for purging deleterious alleles (van Oosterhout, 2009).

As populations are genetically isolated by geography, edaphic adaptations, pollinator fidelity, incompatibility or other factors, genetic incompatibilities are expected to accumulate and further impede gene flow (Rieseberg and Willis, 2007). This indeed appears to be the pattern in numerous taxa (Coyne and Orr, 2004; Orr and Turelli, 2001; Rieseberg and Willis, 2007), but we still know very little about the degree to which incompatibility accumulates during divergence in the Arabidopsis genus. However, patterns are beginning to emerge: For example, within a population of *A. lyrata* ssp. *petraea* from Iceland, SD was observed at only about 10% of markers in crosses. Most of this could be attributed to gametic-level selection, due in part to deleterious mutations linked to the SI locus (Bechsgaard et al., 2004; Leppälä et al., 2008). Reciprocal crosses among a Swedish and Russian population on the other hand showed about twice as much SD, and much more of it attributable to zygotic-level selection (Kuittinen et al., 2004; Leppälä et al., 2008). Crosses between species show, as predicted, much more extensive distortion: hybrids between *A. lyrata* ssp. *petraea* and *A. halleri* ssp. *halleri*, have reduced vigor (Ramos-Onsins et al., 2004) and marker distortion in different intercrossing strategies ranges from 40% (Willems et al., 2007) to 76% of markers (Filatov et al., 2007). These studies indicate a general trend of increasing

accumulation of genetic incompatibilities with divergence time, but more studies are needed to understand the underlying molecular causes and how this might contribute to gene flow barriers.

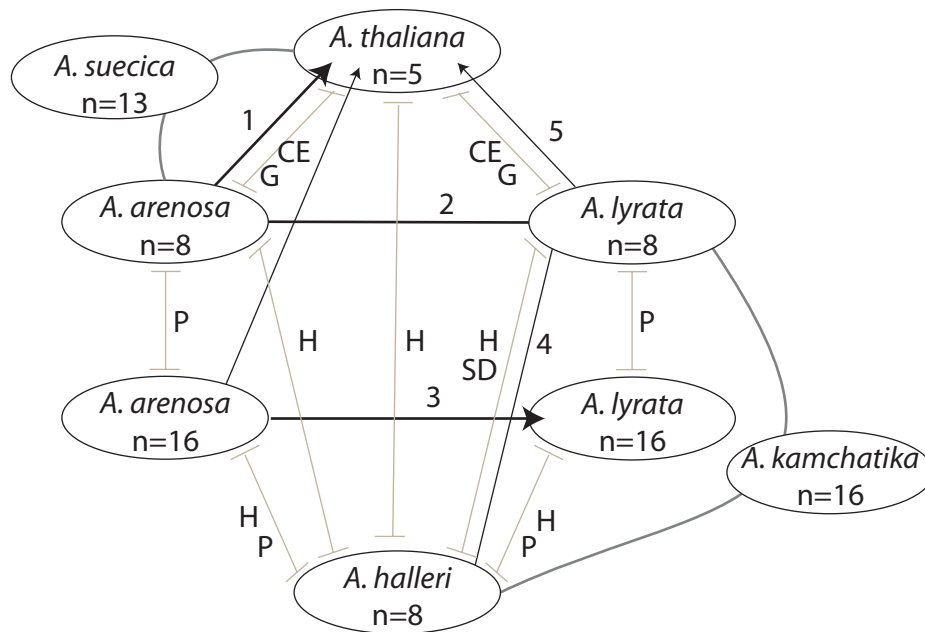
**Hybrid necrosis:** Hybrid necrosis, a phenotype involving dwarfism and extensive cell death is very common in the plant kingdom (Bomblies and Weigel, 2007b), and is also a repeated cause of failure of hybrids among *A. thaliana* accessions. Hybrid necrosis occurs in progeny of about 2% of crosses among accessions and can cause strong segregation distortion in recombinant inbred lines or F<sub>2</sub> populations (Alcazar et al., 2009; Bomblies et al., 2007). While in the Arabidopsis genus hybrid necrosis is rare, in some taxa it is common and may play an important role in gene flow restriction (Brieger, 1929; Jiang et al., 2000; Kostoff, 1930; Lee, 1981; Phillips, 1977). Thus the Arabidopsis system provides a model for a phenomenon relevant to divergence and speciation in plants more generally. Several genes have been cloned in *A. thaliana*, showing that this type of hybrid failure is caused by deleterious epistatic interactions among diverged components of the plant immune system that interact to trigger a highly detrimental induction of pathogen responses (Alcazar et al. 2009; Bomblies et al., 2007). Hybrid necrosis has been attributed to immune induction and resistance-related genes in other species as well (Hannah et al., 2007; Jeuken et al., 2009; Khanna-Chopra et al., 1998; Krüger et al. 2002; Yamamoto et al., 2010). Defense-related genes are among the most diverse in the *A. thaliana* genome, and often show patterns of nucleotide polymorphism suggestive

of non-neutral evolution, including patterns of diversifying and balancing selection (Bakker et al. 2006; Borevitz et al. 2007; Clark et al., 2007; Mondragón-Palomino et al. 2002). This implicates adaptation to rapidly diversifying pathogens in the accumulation of genetic incompatibilities among populations or species (Bomblies, 2009). Modeling has recently shown that under some circumstances, hybrid necrosis could contribute to the evolution of reproductively isolated populations (Ispolatov and Doebeli, 2009).

**Outlook**

Though we know quite a lot about the molecular basis of a number of evolutionary processes in the Arabidopsis genus, we still know comparatively little about speciation, gene flow barriers and genetic divergence in this tractable group of plants. What is known so far about potential and realized gene flow, as well as barriers among species, is summarized in figure 2. Though many barriers and gene flow possibilities have been uncovered, many gaps remain in our understanding of what drove the divergence of these species, and what barriers maintain their distinctiveness.

The Arabidopsis species, with extensive variation in habitats, evidence of local adaptation, variation in ploidy, at least two allopolyploid hybrid species, a newly discovered hybrid zone and well-established molecular models and tools, provide exciting opportunities for using this genus more fully to study speciation-



**Figure 2:** Overview of known or suspected compatibility (black lines or arrows, if unidirectional) and barriers (grey bars) between the major Arabidopsis lineages. Hybrid species are linked to their parents with dark grey bars. Chromosome numbers are indicated within the circles with the taxon names. Notes on chart: CE = chromosomal differences and epigenetic incompatibility, P = Ploidy difference, G = gamete recognition preference, H = possible habitat isolation, SD = strong segregation distortion. Specific notes: (1) Hybridization between *A. arenosa* (especially diploids) and *A. thaliana* is possible in the lab, and gave rise to allopolyploid *A. suecica* in nature, (2) Hybridization between *A. lyrata* and *A. arenosa* is inferred from molecular data, (3) A hybrid zone between tetraploid *A. arenosa* and tetraploid *A. lyrata* is known (see text), (4) Historical gene flow between *A. lyrata* and *A. halleri* is indicated in molecular data. Hybridization gave rise to some isolates of *A. kamchatika*, (5) Crosses of *A. lyrata* onto *A. thaliana* are possible in the lab (Beaulieu et al., 2009), but hybrid zones have not been documented in nature.

related processes in molecular detail. To fully capitalize on these opportunities, we still need some groundwork: The need for a detailed, molecularly informed re-evaluation of morphology and taxonomy in the Arabidopsis genus has already been emphasized (Koch et al., 2008), but we also need to greatly improve our understanding of the present and historical patterns of local adaptation and divergence (i.e. with population genetics and evolutionary modeling approaches), especially as they might relate to gene flow barriers. We need to understand more fully why Arabidopsis species so rarely occur in the same areas. What are their specific adaptations and to what degree do these limit contact? Attempting to correlate this information with genome sequence divergence will be informative for understanding which barriers may have been particularly significant over the long term. While studies that attempt to characterize all gene flow barriers acting between two species or populations still have some limitations (for example, they do not necessarily allow us to infer the temporal order in which isolating barriers arose, or whether distinct barriers are genetically independent), they can provide an extremely valuable starting point for investigating what factors might have been important in speciation. Such studies of gene flow barriers (see for examples Lowry et al., 2008a) would be very useful in Arabidopsis and will allow us to more effectively capitalize on molecular and genomic tools to ask ecologically informed questions and benefit from the power of this genus to uncover mechanisms relevant to speciation and adaptation. In addition, it will be very informative to begin including the outcrossing species in more detailed studies of species barriers – for example, why do diploid *A. arenosa* and *A. halleri*, whose ranges overlap, not seem to hybridize in the wild, or why do *A. lyrata* and *A. halleri*, whose hybrid is viable in the lab, and whose ranges also overlap in Europe, not form hybrid zones? Are hybrid zones such as that observed with *A. lyrata* and *A. arenosa* tetraploids in Austria also observed among diploids? There are many remaining questions about the causes and consequences of divergence in the Arabidopsis genus, and the molecular tools available for a growing number of species provide exciting opportunities for understanding the molecular basis of speciation in this model genus.

#### ACKNOWLEDGEMENTS

We are grateful to Levi Yant, Marcus Koch, Roswitha Schmickl, Jesse Hollister and Brian Arnold for discussions and helpful comments on the manuscript. The authors were supported by setup funds from Harvard University and a fellowship from the John D. and Catherine T. MacArthur Foundation (KB).

#### REFERENCES

- Adams, S., Vinkenoog, R., Spielman, M., Dickinson, H.G. and Scott, R.J. (2000). Parent-of-origin effects on seed development in *Arabidopsis thaliana* require DNA methylation. *Development* **127**: 2493–2502.
- Al-Shehbaz, I.A. and O’Kane, S.L.J. (2002). Taxonomy and Phylogeny of Arabidopsis (Brassicaceae). *The Arabidopsis Book*. Rockville, MD: American Society of Plant Biologists.
- Alcazar, R., Garcia, A.V., Parker, J.E. and Reymond, M. (2009). Incremental steps toward incompatibility revealed by Arabidopsis epistatic interactions modulating salicylic acid pathway activation. *Proc. Natl. Acad. Sci. USA* **106**: 334–339.
- Balasubramanian, S., Schwartz, C., Singh, A. et al. (2009). QTL mapping in new *Arabidopsis thaliana* advanced intercross-recombinant inbred lines. *PLoS One* **4**: e4318.
- Bakker E.G., Toomajian C., Kreitman M. and Bergelson J. (2006). A genome-wide survey of *R* gene polymorphisms in Arabidopsis. *Plant Cell* **18**: 1803–1818.
- Barton, N.H. and Hewitt, G.M. (1989). Adaptation, speciation and hybrid zones. *Nature* **341**: 497–503.
- Baxter, I. (2009). Ionomics: studying the social network of mineral nutrients. *Curr. Op. Plant Biol.* **12**: 381–386.
- Bayes, J.J. and Malik, H.S. (2009). Heterochromatin binding by a hybrid sterility protein in *Drosophila* sibling species. *Science* **326**: 1538–1541.
- Beaulieu, J., Jean, M. and Belzile, F. (2009). The allotetraploid *Arabidopsis thaliana-Arabidopsis lyrata* subsp. *petraea* as an alternative model system for the study of polyploidy in plants. *Mol. Genet. Genomics* **281**: 421–435.
- Bechsgaard, J., Bataillon, T. and Schierup, M.H. (2004). Uneven segregation of sporophytic self-incompatibility alleles in *Arabidopsis lyrata*. *J. Evol. Biol.* **17**: 554–561.
- Bechsgaard, J.S., Castric, V., Charlesworth, D., Vekemans, X. and Schierup, M.H. (2006). The transition to self-compatibility in *Arabidopsis thaliana* and evolution within S-haplotypes over 10 Myr. *Mol. Biol. Evol.* **23**: 1741–1750.
- Bernard, C., Roosens, N., Czernic, P., Lebrun, M. and Verbruggen, N. (2004). A novel CPx-ATPase from the cadmium hyperaccumulator *Thlaspi caerulescens*. *FEBS Lett.* **569**: 140–148.
- Bert, V., Bonnin, I., Saumitou-Laprade, P., de Laguerie, P. and Petit, D. (2002). Do *Arabidopsis halleri* from nonmetallicolous population accumulate zinc and cadmium more effectively than those from metallicolous population? *New Phytol.* **155**: 47–57.
- Bikard, D., Patel, D., Le Mette, C., Giorgi, V., Camilleri, C., Bennett, M.J. and Loudet, O. (2009). Divergent evolution of duplicate genes leads to genetic incompatibilities within *A. thaliana*. *Science* **323**: 623–626.
- Blumenstiel, J.P. and Hartl, D.L. (2005). Evidence for maternally transmitted small interfering RNA in the repression of transposition in *Drosophila virilis*. *Proc. Natl. Acad. Sci. USA* **102**: 15965–15970.
- Boggs, N.A., Dwyer, K.G., Nasrallah, M.E. and Nasrallah, J.B. (2009). In vivo detection of residues required for ligand-selective activation of the S-locus receptor in Arabidopsis. *Curr. Biol.* **19**: 786–791.
- Bombliès, K. (2009). Too much of a good thing? Hybrid necrosis as a by-product of plant immune system diversification. *Botany* **87**: 1013–1022.
- Bombliès, K., Lempe, J., Epple, P., Warthmann, N., Lanz, C., Dangl, J.L. and Weigel, D. (2007). Autoimmune response as a mechanism for a Dobzhansky-Muller-type incompatibility syndrome in plants. *PLoS Biol.* **5**: 1962–1972.
- Bombliès, K. and Weigel, D. (2007a). Arabidopsis: a model genus for speciation. *Curr. Opin. Genet. Dev.* **17**: 500–504.
- Bombliès, K. and Weigel, D. (2007b). Hybrid Necrosis: Autoimmunity as a common barrier to gene flow in plants. *Nat. Rev. Genet.* **8**: 382–393.
- Bombliès, K. and Weigel, D. (2010). Arabidopsis and relatives as models for the study of genetic and genomic incompatibilities. *Phil. Trans. R. Soc. B* **365**: 1815–1823.
- Borevitz, J.O., Hazen, S.P., Michael, T.P., Morris, G.P., Baxter, I.R., Hu, T.T., Chen, H., Werner, J.D., Nordborg, M. and Salt D.E. (2007). Genome-wide patterns of single-feature polymorphism in *Arabidopsis thaliana*. *Proc. Natl. Acad. Sci. USA* **104**: 12057–12062.
- Boublík, K., Petřík, P., Sádlo, J., Hédli, R., Willner, W., Černý, T. and Kolbek, J. (2007). Calcicolous beech forests and related vegetation in the Czech Republic: a comparison of formalized classifications. *Preslia* **79**: 141–161.
- Bradshaw, H.D., Jr., Otto, K.G., Frewen, B.E., McKay, J.K. and Schem-

- ske, D.W. (1998). Quantitative trait loci affecting differences in floral morphology between two species of monkeyflower (*Mimulus*). *Genetics* **149**: 367–382.
- Brandvain, Y. and Haig, D. (2005). Divergent mating systems and parental conflict as a barrier to hybridization in flowering plants. *Am. Nat.* **166**: 330–338.
- Brieger, F. (1929). Vererbung bei Artbastarden unter besonderer Berücksichtigung der Gattung *Nicotiana*. *Der Züchter* **1**: 140–152.
- Buerkle, C.A., Morris, R.J., Asmussen, M.A. and Rieseberg, L. (2000). The likelihood of homoploid hybrid speciation. *Heredity* **84**:441–451.
- Bushell, C., Spielman, M. and Scott, R.J. (2003). The basis of natural and artificial postzygotic hybridization barriers in *Arabidopsis* species. *Plant Cell* **15**: 1430–1442.
- Černý, T., Petřík, P., Boublík, K. and Kolbek, J. (2006). Habitat requirements of *Cardaminopsis petraea*—Rare and relict species of the Czech Republic. *Biologia* **61**: 51–61.
- Chini, A., Grant, J.J., Seki, M., Shinozaki, K. and Loake, G.J. (2004). Drought tolerance established by enhanced expression of the *CC-NBS-LRR* gene, *ADR1*: requires salicylic acid, EDS1 and ABI1. *Plant J.* **38**: 810–822.
- Clark, N.L., Aagaard, J.E. and Swanson, W.J. (2006). Evolution of reproductive proteins from animals and plants. *Reproduction* **131**: 11–22.
- Clark, R.M., Schweikert, G., Toomajian, C. et al. (2007). Common sequence polymorphisms shaping genetic diversity in *Arabidopsis thaliana*. *Science* **317**: 338–342.
- Clauss, M.J. and Koch, M.A. (2006). Poorly known relatives of *Arabidopsis thaliana*. *Trends Plant Sci.* **11**: 449–459.
- Clerkx, E.J., El-Lithy, M.E., Vierling, E., Ruys, G.J., Blankestijn-De Vries, H., Groot, S.P., Vreugdenhil, D. and Koornneef, M. (2004). Analysis of natural allelic variation of *Arabidopsis* seed germination and seed longevity traits between the accessions *Landsberg erecta* and *Shakdara*, using a new recombinant inbred line population. *Plant Physiol.* **135**: 432–443.
- Comai, L. (2005). The advantages and disadvantages of being polyploid. *Nat. Rev. Genet.* **6**: 836–846.
- Comai, L., Madlung, A., Josefsson, C. and Tyagi, A. (2003). Do the different parental 'heteromes' cause genomic shock in newly formed allopolyploids? *Philos. Trans. R. Soc. Lond. B Biol. Sci.* **358**: 1149–1155.
- Comai, L., Tyagi, A.P., Winter, K., Holmes-Davis, R., Reynolds, S.H., Stevens, Y. and Byers, B. (2000). Phenotypic instability and rapid gene silencing in newly formed *Arabidopsis* allotetraploids. *Plant Cell* **12**: 1551–1568.
- Cordts, S., Bantín, J., Wittich, P.E., Kranz, E., Lorz, H. and Dresselhaus, T. (2001). ZmES genes encode peptides with structural homology to defensins and are specifically expressed in the female gametophyte of maize. *Plant J.* **25**: 103–114.
- Courbot, M., Willems, G., Motte, P., Arvidsson, S., Roosens, N., Saumitou-Laprade, P. and Verbruggen, N. (2007). A major quantitative trait locus for cadmium tolerance in *Arabidopsis halleri* colocalizes with *HMA4*: a gene encoding a heavy metal ATPase. *Plant Physiol.* **144**: 1052–1065.
- Coyne, J.A. and Orr, H.A. (2004). *Speciation*. Sunderland, Massachusetts, USA: Sinauer.
- Crosby, M.A., Goodman, J.L., Strelets, V.B., Zhang, P., Gelbart, W.M. and The FlyBase Consortium (2007). FlyBase: genomes by the dozen. *Nucl. Acids Res.* **35**: D486–491.
- Dart, S., Kron, P. and Mable, B.K. (2004). Characterizing polyploidy in *Arabidopsis lyrata* using chromosome counts and flow cytometry. *Botany* **82**: 185–197.
- Dave, R.K. and Henikoff, S. (2006). Centromeres put epigenetics in the driver's seat. *Trends Biochem. Sci.* **31**: 662–669.
- Dilkes, B.P., Spielman, M., Weizbauer, R., Watson, B., Burkart-Waco, D., Scott, R.J. and Comai, L. (2008). The maternally expressed WRKY transcription factor TTG2 controls lethality in interploidy crosses of *Arabidopsis*. *PLoS Biol.* **6**: 2707–2720.
- Dräger, D.B., Desbrosses-Fonrouge, A.G., Krach, C., Chardonens, A.N., Meyer, R.C., Saumitou-Laprade, P. and Kramer, U. (2004). Two genes encoding *Arabidopsis halleri* *MTP1* metal transport proteins cosegregate with zinc tolerance and account for high *MTP1* transcript levels. *Plant J.* **39**: 425–439.
- el-Lithy, M.E., Bentsink, L., Hanhart, C.J., Ruys, G.J., Rovito, D., Broekhof, J.L., van der Poel, H.J., van Eijk, M.J., Vreugdenhil, D. and Koornneef, M. (2006). New *Arabidopsis* recombinant inbred line populations genotyped using SNPWave and their use for mapping flowering-time quantitative trait loci. *Genetics* **172**: 1867–1876.
- Erilova, A., Brownfield, L., Exner, V., Rosa, M., Twell, D., Mittelsten Scheid, O., Hennig, L. and Kohler, C. (2009). Imprinting of the polycomb group gene *MEDEA* serves as a ploidy sensor in *Arabidopsis*. *PLoS Genet.* **5**: e1000663.
- Escobar-Restrepo, J.M., Huck, N., Kessler, S., Gagliardini, V., Gheyselincx, J., Yang, W.C. and Grossniklaus, U. (2007). The *FERONIA* receptor-like kinase mediates male-female interactions during pollen tube reception. *Science* **317**: 656–660.
- Ferree, P.M. and Barbash, D.A. (2009). Species-specific heterochromatin prevents mitotic chromosome segregation to cause hybrid lethality in *Drosophila*. *PLoS Biol.* **7**: e1000234.
- Filatov, V., Dowdle, J., Smirnov, N., Ford-Lloyd, B., Newbury, H.J. and Macnair, M.R. (2007). A quantitative trait loci analysis of zinc hyperaccumulation in *Arabidopsis halleri*. *New Phytol.* **174**: 580–590.
- Fishman, L., Aagaard, J. and Tuthill, J.C. (2008). Toward the evolutionary genomics of gametophytic divergence: patterns of transmission ratio distortion in monkeyflower (*Mimulus*) hybrids reveal a complex genetic basis for conspecific pollen precedence. *Evolution* **62**: 2958–2970.
- Fishman, L., Kelly, A.J., Morgan, E. and Willis, J.H. (2001). A genetic map in the *Mimulus guttatus* species complex reveals transmission ratio distortion due to heterospecific interactions. *Genetics* **159**: 1701–1716.
- Foxe, J.P., Slotte, T., Stahl, E., Neuffer, B., Hurka, H. and Wright, S.I. (2009). Recent speciation associated with the evolution of selfing in *Capsella*. *Proc. Natl. Acad. Sci. USA* **106**: 5241–5245.
- Freeman, J.L., Garcia, D., Kim, D., Hopf, A. and Salt, D.E. (2005). Constitutively elevated salicylic acid signals glutathione-mediated nickel tolerance in *Thlaspi* nickel hyperaccumulators. *Plant Physiol.* **137**: 1082–1091.
- Gagliardini, V., Grossniklaus, U., Page, D.R. and Kohler, C. (2005). The *Arabidopsis thaliana* *MEDEA* polycomb group protein controls expression of *PHERES1* by parental imprinting. *Nature Genet.* **37**: 28–30.
- Gavrilets, S. and Vose, A. (2007). Case studies and mathematical models of ecological speciation. 2. Palms on an oceanic island. *Mol. Ecol.* **16**: 2910–2921.
- Gazzani, S., Gendall, A.R., Lister, C. and Dean, C. (2003). Analysis of the molecular basis of flowering time variation in *Arabidopsis* accessions. *Plant Physiol.* **132**: 1107–1114.
- Gehring, M., Bubba, K.L. and Henikoff, S. (2009). Extensive demethylation of repetitive elements during seed development underlies gene imprinting. *Science* **324**: 1447–1451.
- Gos, G. and Wright, S.I. (2008). Conditional neutrality at two adjacent *NBS-LRR* disease resistance loci in natural populations of *Arabidopsis lyrata*. *Mol. Ecol.* **17**: 4953–4962.
- Grant, V. (1971) *Plant Speciation*. Columbia University Press. New York, NY.
- Guo, Y.-L., Bechsgaard, J.S., Slotte, T., Neuffer, B., Lascoux, M., Weigel, D. and Schierup, M.H. (2009). Recent speciation of *Capsella rubella*

- from *Capsella grandiflora*, associated with loss of self-incompatibility and an extreme bottleneck. *Proc. Natl. Acad. Sci. USA* **106**: 5246–5251.
- Ha, M., Lu, J., Tian, L., Ramachandran, V., Kasschau, K.D., Chapman, E.J., Carrington, J.C., Chen, X., Wang, X.J. and Chen, Z.J.** (2009). Small RNAs serve as a genetic buffer against genomic shock in Arabidopsis interspecific hybrids and allopolyploids. *Proc. Natl. Acad. Sci. USA* **106**: 17835–17840.
- Haig, D. and Westoby, M.** (1991). Genomic imprinting in endosperm: its effect on seed development in crosses between species, and between different ploidies of the same species, and its implications for the evolution of apomixis. *Phil. Trans. R. Soc. Lond. B Biol. Sci.* **333**: 1–13.
- Hall, M.C. and Willis, J.H.** (2005). Transmission ratio distortion in intraspecific hybrids of *Mimulus guttatus*: implications for genomic divergence. *Genetics* **170**: 375–386.
- Hall, M.C. and Willis, J.H.** (2006). Divergent selection on flowering time contributes to local adaptation in *Mimulus guttatus* populations. *Evolution* **60**: 2466–2477.
- Hanikenne, M., Talke, I.N., Haydon, M.J., Lanz, C., Nolte, A., Motte, P., Kroymann, J., Weigel, D. and Krämer, U.** (2008). Evolution of metal hyperaccumulation required cis-regulatory changes and triplication of *HMA4*. *Nature* **453**: 391–395.
- Hannah, M.A., Kramer, K.M., Geffroy, V. et al.** (2007). Hybrid weakness controlled by the dosage-dependent lethal (DL) gene system in common bean (*Phaseolus vulgaris*) is caused by a shoot-derived inhibitory signal leading to salicylic acid-associated root death. *New Phytol.* **176**: 537–549.
- Harper, G., Osuji, J.O., Heslop-Harrison, J.S. and Hull, R.** (1999). Integration of Banana Streak Badnavirus into the *Musa* genome: Molecular and cytogenetic evidence. *Virology* **255**: 207–213.
- Hawkins, J.S., Kim, H.R., Nason, J.D., Wing, R.A. and Wendel, J.F.** (2006). Differential lineage-specific amplification of transposable elements is responsible for genome size variation in *Gossypium*. *Genome Res.* **16**: 1252–1261.
- He, Y., Tang, R.H., Hao, Y. et al.** (2004). Nitric oxide represses the Arabidopsis floral transition. *Science* **305**: 1968–1971.
- Hegarty, M.J. and Hiscock, S.J.** (2005). Hybrid speciation in plants: new insights from molecular studies. *New Phytol.* **165**: 411–423.
- Henikoff, S., Ahmad, K. and Malik, H.S.** (2001). The centromere paradox: stable inheritance with rapidly evolving DNA. *Science* **293**: 1098–1102.
- Henry, I.M., Dilkes, B.P. and Comai, L.** (2007). Genetic basis for dosage sensitivity in *Arabidopsis thaliana*. *PLoS Genet.* **3**: e70.
- Henry, I.M., Dilkes, B.P., Young, K., Watson, B., Wu, H. and Comai, L.** (2005). Aneuploidy and genetic variation in the *Arabidopsis thaliana* triploid response. *Genetics* **170**: 1979–1988.
- Henry, I.M., Dilkes, B.P., Tyagi, A.P., Lin, H.Y. and Comai, L.** (2009). Dosage and parent-of-origin effects shaping aneuploid swarms in *A. thaliana*. *Heredity* **103**: 458–468.
- Heslop-Harrison, J.S., Brandes, A. and Schwarzacher, T.** (2003). Tandemly repeated DNA sequences and centromeric chromosomal regions of Arabidopsis species. *Chromosome Res.* **11**: 241–253.
- Higashiyama, T., Inatsugi, R., Sakamoto, S., Sasaki, N., Mori, T., Kuroiwa, H., Nakada, T., Nozaki, H., Kuroiwa, T. and Nakano, A.** (2006). Species preferentiality of the pollen tube attractant derived from the synergid cell of *Torenia fournieri*. *Plant Physiol.* **142**: 481–491.
- Hoffmann, M.H.** (2005). Evolution of the realized climatic niche in the genus Arabidopsis (Brassicaceae). *Evolution* **59**: 1425–1436.
- Howard, D.J.** (1999). Conspecific sperm and pollen precedence and speciation. *Ann. Rev. Ecol. Syst.* **30**: 109–132.
- Huetzel, B., Kreil, D.P., Matzke, M. and Matzke, A.J.** (2008). Effects of aneuploidy on genome structure, expression, and interphase organization in *Arabidopsis thaliana*. *PLoS Genet.* **4**: e1000226.
- Husová, M.** (1967). Azidophile Eichenwälder auf Quartziten im Tribec-Gebirge, Slowakei. *Folia Geobotanica & Phytotaxonomica* **2**: 121–136.
- Hylander, N.** (1957). *Cardaminopsis suecica* (Fr.) Hiit., a northern amphidiploid species. *Bulletin du Jardin Botanique de l'Etat* **27**: 591–604.
- Ispolatov, I. and Doebeli, M.** (2009). Speciation due to hybrid necrosis in plant-pathogen models. *Evolution* **63**: 3076–3084.
- Jain, S.** (1976). The evolution of inbreeding in plants. *Annu. Rev. Ecol. Syst.* **7**: 469–495.
- Jakobsson, M., Hagenblad, J., Tavaré, S., Säll, T., Halldén, C., Lind-Halldén, C. and Nordborg, M.** (2006). A unique recent origin of the allotetraploid species *Arabidopsis suecica*: Evidence from nuclear DNA markers. *Mol. Biol. Evol.* **23**: 1217–1231.
- Jeunen, M.J.W., Zhang, N.W., McHale, L.K., Pelgrom, K., den Boer, E., Lindhout, P., Michelmore, R.W., Visser, R.G.F. and Niks, R.E.** (2009). *Rin4* Causes Hybrid Necrosis and Race-Specific Resistance in an Interspecific Lettuce Hybrid. *Plant Cell* **21**: 3368–3378.
- Jiang, C.X., Chee, P.W., Draye, X., Morrell, P.L., Smith, C.W. and Pater-son, A.H.** (2000). Multilocus interactions restrict gene introgression in interspecific populations of polyploid *Gossypium* (cotton). *Evolution Int. J. Org. Evolution* **54**: 798–814.
- Jones-Rhoades, M.W., Borevitz, J.O. and Preuss, D.** (2007). Genome-wide expression profiling of the Arabidopsis female gametophyte identifies families of small, secreted proteins. *PLoS Genet.* **3**: 1848–1861.
- Josefsson, C., Dilkes, B. and Comai, L.** (2006). Parent-dependent loss of gene silencing during interspecies hybridization. *Curr Biol.* **16**: 1322–1328.
- Juenger, T.E., Sen, S., Stowe, K.A. and Simms, E.L.** (2005). Epistasis and genotype-environment interaction for quantitative trait loci affecting flowering time in *Arabidopsis thaliana*. *Genetica* **123**: 87–105.
- Justin, C.** (1993). Über bemerkenswerte Vorkommen ausgewählter Pflanzensippen auf Serpentinstandorten Österreichs, Sloweniens sowie der Tschechischen Republik. *Linzer Biol. Beitr.* **25**: 1033–1099.
- Kamm, A., Galasso, I., Schmidt, T. and Heslop-Harrison, J.S.** (1995). Analysis of a repetitive DNA family from *Arabidopsis arenosa* and relationships between Arabidopsis species. *Plant Mol. Biol.* **27**: 853–862.
- Kandasamy, M.K., Nasrallah, J.B. and Nasrallah, M.E.** (1994). Pollen-pistil interactions and developmental regulation of pollen tube growth in Arabidopsis. *Development* **120**: 3405–3418.
- Kawabe, A. and Nasuda, S.** (2005). Structure and genomic organization of centromeric repeats in Arabidopsis species. *Mol. Genet. Genomics* **272**: 593–602.
- Khanna-Chopra, R., Dalal, M., Kumar, G.P. and Laloraya, M.** (1998). A genetic system involving superoxide causes F<sub>1</sub> necrosis in wheat (*T. aestivum* L.). *Biochem. Biophys. Res. Comm.* **248**: 712–715.
- Koch, M.A. and Matschinger, M.** (2007). Evolution and genetic differentiation among relatives of *Arabidopsis thaliana*. *Proc. Natl. Acad. Sci. USA* **104**: 6272–6277.
- Koch, M.A., Wernisch, M. and Schmickl, R.** (2008). *Arabidopsis thaliana*'s wild relatives: an updated overview on systematics, taxonomy and evolution. *Taxon* **57**: 933–943.
- Köhler, C., Hennig, L., Spillane, C., Pien, S., Gruissem, W. and Grossniklaus, U.** (2003). The Polycomb-group protein *MEDEA* regulates seed development by controlling expression of the MADS-box gene *PHERES1*. *Genes Devel.* **17**: 1540.
- Kolnik, M. and Marhold, K.** (2006). Distribution, chromosome numbers and nomenclature conspect of *Arabidopsis halleri* (Brassicaceae) in the Carpathians. *Biologia* **61**: 41–50.
- Koornneef, M., Alonso-Blanco, C., Peeters, A.J.M. and Soppe, W.** (1998). Genetic control of flowering time in Arabidopsis. *Ann. Rev. Plant Phys. Plant Mol. Biol.* **49**: 345–370.
- Koornneef, M., Fransz, P. and de Jong, H.** (2003). Cytogenetic tools for

- Arabidopsis thaliana*. Chromosome Res. **11**: 183–194.
- Korves, T.M. and Bergelson, J.** (2003). A developmental response to pathogen infection in *Arabidopsis*. *Plant Physiol.* **133**: 339–347.
- Kostoff, D.** (1930). Ontogeny, Genetics, and Cytology of *Nicotiana* Hybrids. *Genetica* **12**: 33–139.
- Krüger, J., Thomas, C.M., Golstein, C., Dixon, M.S., Smoker, M., Tang, S., Mulder, L. and Jones, J.D.G.** (2002). A tomato cysteine protease required for *Cf-2*-dependent disease resistance and suppression of autonecrosis. *Science* **296**: 744–747.
- Kucharski, R., Sas-Nowosielska, A., Małkowski, E., Japenga, J., Kuperberg, J.M., Pogrzeba, M. and Krzyżak, J.** (2005). The use of indigenous plant species and calcium phosphate for the stabilization of highly metal-polluted sites in southern Poland. *Plant and Soil* **273**: 291–305.
- Kuittinen, H., de Haan, A.A., Vogl, C., Oikarinen, S., Leppälä, J., Koch, M., Mitchell-Olds, T., Langley, C.H. and Savolainen, O.** (2004). Comparing the linkage maps of the close relatives *Arabidopsis lyrata* and *A. thaliana*. *Genetics* **168**: 1575–1584.
- Lawesson, J.E. and Mark, S.** (2000). pH and Ellenberg reaction values for Danish forest plants. *Proc. IAVS Symp.* 151–153.
- Lee, J.A.** (1981). Genetics of  $D_3$  complementary lethality in *Gossypium hirsutum* and *G. barbadense*. *J. Hered.* **72**: 299–300.
- Leitch, A.R. and Leitch, I.J.** (2008). Genomic plasticity and the diversity of polyploid plants. *Science* **320**: 481–483.
- Lempe, J., Balasubramanian, S., Sureshkumar, S., Singh, A., Schmid, M. and Weigel, D.** (2005). Diversity of flowering responses in wild *Arabidopsis thaliana* strains. *PLoS Genet.* **1**: 109–118.
- Leppälä, J., Bechsgaard, J.S., Schierup, M.H. and Savolainen, O.** (2008). Transmission ratio distortion in *Arabidopsis lyrata*: effects of population divergence and the S-locus. *Heredity* **100**: 71–78.
- Levin, D.A.** (2002). *The Role of Chromosomal Change in Plant Evolution*. New York, NY: Oxford University Press.
- Levin, D.A.** (2009). Flowering-time plasticity facilitates niche shifts in adjacent populations. *New Phytol.* **183**: 661–666.
- Liu, S.C., Kowalski, S.P., Lan, T.H., Feldmann, K.A. and Paterson, A.H.** (1996). Genome-wide high-resolution mapping by recurrent intermingling using *Arabidopsis thaliana* as a model. *Genetics* **142**: 247–258.
- Lowry, D.B., Modliszewski, J.L., Wright, K.M., Wu, C.A. and Willis, J.H.** (2008a). The strength and genetic basis of reproductive isolating barriers in flowering plants. *Proc. R. Soc. Lond. B Biol. Sci.* **363**: 3009–3021.
- Lowry, D.B., Rockwood, R.C. and Willis, J.H.** (2008b). Ecological reproductive isolation of coast and inland races of *Mimulus guttatus*. *Evolution* **62**: 2196–2214.
- Lynch, M. and Force, A.G.** (2000). The origin of interspecific genomic incompatibility via gene duplication. *Am. Nat.* **156**: 590–605.
- Macnair, M.R.** (2002). Within and between population genetic variation for zinc accumulation in *Arabidopsis halleri*. *New Phytol.* **155**: 59–66.
- Macnair, M.R., Bert, V., Huitson, S.B., Saumitou-Laprade, P. and Petit, D.** (1999). Zinc tolerance and hyperaccumulation are genetically independent characters. *Proc. R. Soc. Lond. B Biol. Sci.* **266**: 2175–2179.
- Madlung, A., Tyagi, A.P., Watson, B., Jiang, H., Kagechi, T., Doerge, R.W., Martienssen, R. and Comai, L.** (2005). Genomic changes in synthetic *Arabidopsis* polyploids. *Plant J.* **41**: 221–230.
- Makarevich, G., Leroy, O., Akinci, U., Schubert, D., Clarenz, O., Godrich, J., Grossniklaus, U. and Köhler, C.** (2006). Different Polycomb group complexes regulate common target genes in *Arabidopsis*. *EMBO Rep.* **7**: 947–952.
- Mallet, J.** (2007). Hybrid speciation. *Nature* **446**: 279–283.
- Martienssen, R.A.** (2010). Heterochromatin, small RNA and post-fertilization dysgenesis in allopolyploid and interploid hybrids of *Arabidopsis*. *New Phytol.* **186**: 46–53.
- Martínez, C., Pons, E., Prats, G. and León, J.** (2004). Salicylic acid regulates flowering time and links defence responses and reproductive development. *Plant J.* **37**: 209–217.
- Matzke, M., Kanno, T., Daxinger, L., Huettel, B. and Matzke, A.J.M.** (2009). RNA-mediated chromatin-based silencing in plants. *Curr. Op. Cell Biol.* **21**: 367–376.
- McDaniel, S.F., Willis, J.H. and Shaw, A.J.** (2007). A linkage map reveals a complex basis for segregation distortion in an interpopulation cross in the moss *Ceratodon purpureus*. *Genetics* **176**: 2489–2500.
- McKay, J.K., Richards, J.H. and Mitchell-Olds, T.** (2003). Genetics of drought adaptation in *Arabidopsis thaliana*: I. Pleiotropy contributes to genetic correlations among ecological traits. *Mol. Ecol.* **12**: 1137–1151.
- McKay, J.K., Richards, J.H., Nemali, K.S., Sen, S., Mitchell-Olds, T., Boles, S., Stahl, E.A., Wayne, T. and Juenger, T.E.** (2008). Genetics of drought adaptation in *Arabidopsis thaliana* II. QTL analysis of a new mapping population, KAS-1 x TSU-1. *Evolution* **62**: 3014–3026.
- Měsíček, J.** (1967). The chromosome morphology of *Arabidopsis thaliana* (L.) Heynh. and some remarks on the problem of *Hylandra suecica* (Fr.) Löve. *Folia Geobotanica & Phytotaxonomica* **2**: 433–436.
- Mitchell-Olds, T.** (2001). *Arabidopsis thaliana* and its wild relatives: a model system for ecology and evolution. *Trends Ecol. Evol.* **16**: 693–700.
- Miyake, T., Takebayashi, N. and Wolf, D.E.** (2009). Possible diversifying selection in the imprinted gene, *MEDEA*. *Arabidopsis*. *Mol. Biol. Evol.* **26**: 843–857.
- Mondragón-Palomino M., Meyers B.C., Michelmore R.W. and Gaut B.S.** (2002). Patterns of positive selection in the complete *NBS-LRR* gene family of *Arabidopsis thaliana*. *Genome Res.* **12**: 1305–1315.
- Mosher, R.A., Melnyk, C.W., Kelly, K.A., Dunn, R.M., Studholme, D.J. and Baulcombe, D.C.** (2009). Uniparental expression of PollV-dependent siRNAs in developing endosperm of *Arabidopsis*. *Nature* **460**: 283–286.
- Myburg, A.A., Vogl, C., Griffin, A.R., Sederoff, R.R. and Whetten, R.W.** (2004). Genetics of postzygotic isolation in *Eucalyptus*: whole-genome analysis of barriers to introgression in a wide interspecific cross of *Eucalyptus grandis* and *E. globulus*. *Genetics* **166**: 1405–1418.
- Nasrallah, J.B., Lui, P., Sherman-Broyles, S., Schmidt, R. and Nasrallah, M.E.** (2007). Epigenetic mechanisms for breakdown of self-incompatibility in interspecific hybrids. *Genetics* **175**: 1965–1973.
- Ndowora, T., Dahal, G., LaFleur, D., Harper, G., Hull, R., Olszewski, N.E. and Lockhart, B.** (1999). Evidence that badnavirus infection in *Musa* can originate from integrated pararetroviral sequences. *Virology* **255**: 214–220.
- Okuda, S., Tsutsui, H., Shiina, K. et al.** (2009) Defensin-like polypeptide LUREs are pollen tube attractants secreted from synergid cells. *Nature* **458**: 357–361.
- Orr, H.A. and Irving, S.** (2005) Segregation distortion in hybrids between the Bogota and USA subspecies of *Drosophila pseudoobscura*. *Genetics* **169**: 671–682.
- Orr, H.A. and Turelli, M.** (2001) The evolution of postzygotic isolation: accumulating Dobzhansky-Muller incompatibilities. *Evolution* **55**: 1085–1094.
- Palanivelu, R. and Preuss, D.** (2006) Distinct short-range ovule signals attract or repel *Arabidopsis thaliana* pollen tubes in vitro. *BMC Plant Biol* **6**: 7.
- Papoyan, A. and Kochian, L.V.** (2004) Identification of *Thlaspi caerulescens* genes that may be involved in heavy metal hyperaccumulation and tolerance. Characterization of a novel heavy metal transporting ATPase. *Plant Physiol* **136**: 3814–3823.
- Pauwels, M., Saumitou-Laprade, P., Holl, A.C., Petit, D. and Bonnin, I.** (2005) Multiple origin of metalicolous populations of the pseudometallophyte *Arabidopsis halleri* (Brassicaceae) in central Europe: the cp-DNA testimony. *Mol Ecol* **14**: 4403–4414.

- Phillips, L.L.** (1977) Interspecific incompatibility in *Gossypium*. IV. Temperature-conditional lethality in hybrids of *G. klotzschianum*. *Am J Bot* **64**: 914–915.
- Pigliucci, M. and Schlichting, C.D.** (2002) Reaction norms of Arabidopsis. V. Flowering time controls phenotypic architecture in response to nutrient stress. *J Evol Biol* **11**: 285–301.
- Polatschek, A.** (1965) Cytotaxonomische beiträge zur flora der Ostalpenländer, I. *Österr Boten Zeitschrift* **113**: 1–46.
- Pontes, O., Neves, N., Silva, M., Lewis, M.S., Madlung, A., Comai, L., Viegas, W. and Pikaard, C.S.** (2004) Chromosomal locus rearrangements are a rapid response to formation of the allotetraploid *Arabidopsis suecica* genome. *Proc Natl Acad Sci USA* **101**: 18240–18245.
- Przedpejska, E. and Wierzbicka, M.** (2007) Arabidopsis arenosa (Brassicaceae) from a lead–zinc waste heap in southern Poland—a plant with high tolerance to heavy metals. *Plant and Soil* **299**: 43–53.
- Punwani, J.A., Rabiger, D.S. and Drews, G.N.** (2007) MYB98 positively regulates a battery of synergid-expressed genes encoding filiform apparatus localized proteins. *Plant Cell* **19**: 2557–2568.
- Punz, W. and Mucina, L.** (1997) Vegetation on Anthropogenic metalliferous soils in the Eastern Alps. *Folia Geobotanica & Phytotaxonomica* **32**: 283–295.
- Rajakaruna, N.** (2004) The edaphic factor in the origin of plant species. *Int Geol Rev* **46**: 471–478.
- Ramos-Onsins, S.E., Stranger, B.E., Mitchell-Olds, T. and Aguadé, M.** (2004) Multilocus analysis of variation and speciation in the closely related species *Arabidopsis halleri* and *A. lyrata*. *Genetics* **166**: 373–388.
- Richert-Poggeler, K.R., Noreen, F., Schwarzacher, T., Harper, G. and Hohn, T.** (2003) Induction of infectious petunia vein clearing (pararetro) virus from endogenous provirus in petunia. *EMBO J* **22**: 4836–4845.
- Rieseberg, L.H. and Blackman, B.K.** (2010) Speciation genes in plants. *Ann Bot.* **AOP**.
- Rieseberg, L.H. and Willis, J.H.** (2007) Plant speciation. *Science* **317**: 910–914.
- Rieseberg, L.H., Raymond, O., Rosenthal, D.M., Lai, Z., Livingstone, K., Nakazato, T., Durphy, J.L., Schwarzbach, A.E., Donovan, L.A. and Lexer, C.** (2003) Major ecological transitions in wild sunflowers facilitated by hybridization. *Science* **301**: 1211–1216.
- Rieseberg, L.H., Whitton, J. and Gardner, K.** (1999) Hybrid zones and the genetic architecture of a barrier to gene flow between two sunflower species. *Genetics* **152**: 713–727.
- Riihimäki, M. and Savolainen, O.** (2004) Environmental effects on flowering differences between Northern and Southern populations of *Arabidopsis lyrata* (Brassicaceae). *Am J Bot* **91**: 1036–1045.
- Rus, A., Baxter, I., Muthukumar, B., Gustin, J., Lahner, B., Yakubova, E. and Salt, D.E.** (2006) Natural variants of AtHKT1 enhance Na accumulation in two wild populations of Arabidopsis. *PLoS Genet* **2**: e210.
- Säll, T., Jakobsson, M., Lind-Haldén, C. and Haldén, C.** (2003) Chloroplast DNA indicates a single origin of the allotetraploid *Arabidopsis suecica*. *J Evol Biol* **16**: 1019–1029.
- Säll, T., Lind-Haldén, C., Jakobsson, M. and Haldén, C.** (2005) Mode of reproduction in *Arabidopsis suecica*. *Hereditas* **141**: 313–317.
- Salt, D.E., Baxter, I. and Lahner, B.** (2008) Ionomics and the study of the plant ionome. *Ann Rev Plant Biol* **59**: 709–733.
- Sandring, S. and Agren, J.** (2009) Pollinator-mediated selection on floral display and flowering time in the perennial herb *Arabidopsis lyrata*. *Evolution* **63**: 1292–1300.
- Sandring, S., Riihimäki, M.A., Savolainen, O. and Ågren, J.** (2007) Selection on flowering time and floral display in an alpine and a lowland population of *Arabidopsis lyrata*. *J Evol Biol* **20**: 558–567.
- Savolainen, V., Anstett, M.C., Lexer, C., Hutton, I., Clarkson, J.J., Norup, M.V., Powell, M.P., Springate, D., Salamin, N. and Baker, W.J.** (2006) Sympatric speciation in palms on an oceanic island. *Nature* **441**: 210–213.
- Schluter, D.** (2009) Evidence for ecological speciation and its alternative. *Science* **323**: 737–741.
- Schluter, D. and Conte, G.L.** (2009) Genetics and ecological speciation. *Proc Natl Acad Sci U S A* **106 S1**: 9955–9962.
- Schmickl, R., Jorgensen, M. H., Brysting A. K. and Koch, M. A.** (2010) The evolutionary history of the *Arabidopsis lyrata* complex: A hybrid in the amphi-Beringian area closes a large distribution gap and builds up a genetic barrier. *BMC Evolutionary Biology*. in press.
- Schmickl, R. and Koch, M.A.** Introgression, hybridization and polyploid evolution in *Arabidopsis lyrata* and *A. arenosa*. Manuscript in preparation.
- Scholz, H.** (1962) Nomenklatorische und systematische Studien an *Cardaminopsis arenosa* (L.) Hayek. *Willdenowia* **3**: 137–149.
- Schwarzbach, A.E., Donovan, L.A. and Rieseberg, L.H.** (2001) Transgressive character expression in a hybrid sunflower species. *Am J Bot* **88**: 270–277.
- Scott, R.J., Spielman, M., Bailey, J. and Dickinson, H.G.** (1998) Parent-of-origin effects on seed development in *Arabidopsis thaliana*. *Development* **125**: 3329–3341.
- Sherman-Broyles, S., Boggs, N., Farkas, A., Liu, P., Vrebalov, J., Nasrallah, M.E. and Nasrallah, J.B.** (2007) S locus genes and the evolution of self-fertility in *Arabidopsis thaliana*. *Plant Cell* **19**: 94–106.
- Shimizu-Inatsugi, R., Lihova, J., Iwanaga, H., Kudoh, H., Marhold, K., Savolainen, O., Watanabe, K., Yakubov, V.V. and Shimizu, K.K.** (2009) The allopolyploid *Arabidopsis kamchatica* originated from multiple individuals of *Arabidopsis lyrata* and *Arabidopsis halleri*. *Mol Ecol* **18**: 4024–4048.
- Shimizu, K.K.** (2002) Ecology meets molecular genetics in Arabidopsis. *Pop Ecol* **44**: 221–233.
- Silvertown, J., Servaes, C., Biss, P. and Macleod, D.** (2005) Reinforcement of reproductive isolation between adjacent populations in the Park Grass Experiment. *Heredity* **95**: 198–205.
- Simpson, G.G. and Dean, C.** (2002) Arabidopsis, the Rosetta stone of flowering time? *Science* **296**: 285–289.
- Slotkin, R.K., Vaughn, M., Borges, F., Tanurdzic, M., Becker, J.D., Feijó, J.A. and Martienssen, R.A.** (2009) Epigenetic reprogramming and small RNA silencing of transposable elements in pollen. *Cell* **136**: 461–472.
- Snaydon, R.W. and Davies, T.M.** (1982) Rapid divergence of plant populations in response to recent changes in soil conditions. *Evolution* **36**: 289–297.
- Sobel, J. M., Chen, G. F., Watt, L. R. and Schemske, D. W.** (2009) The biology of speciation. *Evolution* **64**: 295–315
- Stelfox, A.W.** (1970) The forms of *Cardaminopsis petraea* (L.) in Ireland. *Irish Naturalists' J* **16**: 308–309.
- Stinchcombe, J.R. and Schmitt, J.** (2004) Flowering time plasticity in *Arabidopsis thaliana*: a reanalysis of Westerman & Lawrence (1970). *J Evol Biol* **17**: 197–207.
- Swanson, R., Edlund, A.F. and Preuss, D.** (2004) Species specificity in pollen-pistil interactions. *Ann Rev Genet* **38**: 793–818.
- Swanson, W.J. and Vacquier, V.D.** (2002) The rapid evolution of reproductive proteins. *Nature Rev Genet* **3**: 137–144.
- Talbert, P.B., Bryson, T.D. and Henikoff, S.** (2004) Adaptive evolution of centromere proteins in plants and animals. *J Biol* **3**: 18.
- Talbert, P.B., Masuelli, R., Tyagi, A.P., Comai, L. and Henikoff, S.** (2002) Centromere localization and adaptive evolution of an Arabidopsis histone H3 variant. *Plant Cell* **14**: 1053–1066.
- Talke, I.N., Hanikenne, M. and Kramer, U.** (2006) Zinc-dependent global transcriptional control, transcriptional deregulation, and higher gene

- copy number for genes in metal homeostasis of the hyperaccumulator *Arabidopsis halleri*. *Plant Physiol* **142**: 148–167.
- Tang, C., Toomajian, C., Sherman-Broyles, S., Plagnol, V., Guo, Y.-L., Hu, T.T., Clark, R.M., Nasrallah, J.B., Weigel, D. and Nordborg, M.** (2007) The evolution of selfing in *Arabidopsis thaliana*. *Science* **317**: 1070–1072.
- Törjek, O., Witucka-Wall, H., Meyer, R.C., von Korff, M., Kusterer, B., Rautengarten, C. and Altmann, T.** (2006) Segregation distortion in *Arabidopsis* C24/Col-0 and Col-0/C24 recombinant inbred line populations is due to reduced fertility caused by epistatic interaction of two loci. *Theor Appl Genet* **113**: 1551–1561.
- Tsukahara, S., Kobayashi, A., Kawabe, A., Mathieu, O., Miura, A. and Kakutani, T.** (2009) Bursts of retrotransposition reproduced in *Arabidopsis*. *Nature* **461**: 423–426.
- Turner, T.L., von Wettberg, E.J. and Nuzhdin, S.V.** (2008) Genomic analysis of differentiation between soil types reveals candidate genes for local adaptation in *Arabidopsis lyrata*. *Plos One* **3**: e3183.
- Turner, T.L., Bourne, E.C., Von Wettberg, E.J., Hu, T.T. and Nuzhdin, S.V.** (2010) Population resequencing reveals local adaptation of *Arabidopsis lyrata* to serpentine soils. *Nat Genet AOP*. doi:10.1038/ng.515
- Ungerer, M.C., Baird, S.J., Pan, J. and Rieseberg, L.H.** (1998) Rapid hybrid speciation in wild sunflowers. *Proc Natl Acad Sci USA* **95**: 11757–11762.
- van Leeuwen, H., Kliebenstein, D.J., West, M.A., Kim, K., van Poecke, R., Katagiri, F., Michelmore, R.W., Doerge, R.W. and St Clair, D.A.** (2007) Natural variation among *Arabidopsis thaliana* accessions for transcriptome response to exogenous salicylic acid. *Plant Cell* **19**: 2099–2110.
- van Oosterhout, C.** (2009) A new theory of MHC evolution: beyond selection on the immune genes. *Proc R Soc B* **276**: 657–665.
- Vitte, C. and Bennetzen, J.L.** (2006) Analysis of retrotransposon structural diversity uncovers properties and propensities in angiosperm genome evolution. *Proc Natl Acad Sci USA* **103**: 17638.
- Walia, H., Josefsson, C., Dilkes, B., Kirkbride, R., Harada, J. and Comai, L.** (2009) Dosage-dependent deregulation of an *AGAMOUS-LIKE* Gene Cluster Contributes to Interspecific Incompatibility. *Curr Biol* **19**: 1128–1132.
- Wang, H., Chai, Y., Chu, X., Zhao, Y., Wu, Y., Zhao, J., Ngezahayo, F., Xu, C. and Liu, B.** (2009) Molecular characterization of a rice mutator-phenotype derived from an incompatible cross-pollination reveals transgenerational mobilization of multiple transposable elements and extensive epigenetic instability. *BMC Plant Biol* **9**: 63.
- Wang, J., Tian, L., Lee, H.S. and Chen, Z.J.** (2006a) Nonadditive regulation of *FRI* and *FLC* loci mediates flowering-time variation in *Arabidopsis* allopolyploids. *Genetics* **173**: 965–974.
- Wang, J., Tian, L., Lee, H.S. et al.** (2006b) Genomewide nonadditive gene regulation in *Arabidopsis* allotetraploids. *Genetics* **172**: 507–517.
- Watanabe, K.** (2005) *Arabidopsis kamchatica* (Fisch, ex DC.) K. Shimizu & Kudoh and *A. kamchatica* subsp. *kawasakiana* (Makino) K. Shimizu & Kudoh, New Combinations. *Acta phytotaxonomica et geobotanica* **56**: 163.
- Weigel, D. and Mott, R.** (2009) The 1001 genomes project for *Arabidopsis thaliana*. *Genome Biol* **10**: 107.
- Wielgolaski, F.E.** (2001) Phenological modifications in plants by various edaphic factors. *Int J Biometeorol* **45**: 196–202.
- Wilczek, A.M., Roe, J.L., Knapp, M.C., Cooper, M.D., Lopez-Gallego, C., Martin, L.J., Muir, C.D., Sim, S., Walker, A. and Anderson, J.** (2009) Effects of genetic perturbation on seasonal life history plasticity. *Science* **323**: 930–934.
- Wilkins, J.F. and Haig, D.** (2003) What good is genomic imprinting: the function of parent-specific gene expression. *Nature Rev Genet* **4**: 359–368.
- Willems, G., Drager, D.B., Courbot, M., Gode, C., Verbruggen, N. and Saumitou-Laprade, P.** (2007) The genetic basis of zinc tolerance in the metallophyte *Arabidopsis halleri* ssp. *halleri* (Brassicaceae): an analysis of quantitative trait loci. *Genetics* **176**: 659–674.
- Wilson, I.W., Schiff, C.L., Hughes, D.L. and Somerville, S.C.** (2001) Quantitative trait loci analysis of powdery mildew disease resistance in the *Arabidopsis thaliana* accession Kashmir-1. *Genetics* **158**: 1301–1309.
- Yamamoto, E., Takashi, T., Morinaka, Y., Lin, S., Wu, J., Matsumoto, T., Kitano, H., Matsuoka, M. and Ashikari, M.** (2010) Gain of deleterious function causes an autoimmune response and Bateson-Dobzhansky-Muller incompatibility in rice. *Mol Gen Genomics* **283**: 305–315.
- Yang, H., Kaur, N., Kiriakopoulos, S. and McCormick, S.** (2006) EST generation and analyses towards identifying female gametophyte-specific genes in *Zea mays* L. *Planta* **224**: 1004–1014.
- Yant, L., Mathieu, J. and Schmid, M.** (2009) Just say no: floral repressors help *Arabidopsis* bide the time. *Curr Op Plant Biol* **12**: 580–586.
- Yin, T.M., DiFazio, S.P., Gunter, L.E., Riemenschneider, D. and Tuskan, G.A.** (2004) Large-scale heterospecific segregation distortion in *Populus* revealed by a dense genetic map. *Theor Appl Genet* **109**: 451–463.
- Zhang, X., Yazaki, J., Sundaresan, A., Cokus, S., Chan, S. W.-L., Chen, H. Henderson, I. R., Sinn, P., Pellegrini, M., Jacobsen, S. E. and Eckert, J. R.** (2006) Genome-wide high-resolution mapping and functional analysis of DNA methylation in *Arabidopsis*. *Cell* **126**: 1189–1201.