

Scanning Electron Microscope Observations on the Antennal Sensilla of Two Stored Grain Pests *Trogoderma granarium* and *Trogoderma variabile* (Coleoptera: Dermestidae)

Authors: Wei, Chunyan, Ren, Bingzhong, Chen, Xin, Zhou, Xiao, Wang, Weili, et al.

Source: Florida Entomologist, 98(1) : 140-148

Published By: Florida Entomological Society

URL: <https://doi.org/10.1653/024.098.0124>

The BioOne Digital Library (<https://bioone.org/>) provides worldwide distribution for more than 580 journals and eBooks from BioOne's community of over 150 nonprofit societies, research institutions, and university presses in the biological, ecological, and environmental sciences. The BioOne Digital Library encompasses the flagship aggregation BioOne Complete (<https://bioone.org/subscribe>), the BioOne Complete Archive (<https://bioone.org/archive>), and the BioOne eBooks program offerings ESA eBook Collection (<https://bioone.org/esa-ebooks>) and CSIRO Publishing BioSelect Collection (<https://bioone.org/csiro-ebooks>).

Your use of this PDF, the BioOne Digital Library, and all posted and associated content indicates your acceptance of BioOne's Terms of Use, available at www.bioone.org/terms-of-use.

Usage of BioOne Digital Library content is strictly limited to personal, educational, and non-commercial use. Commercial inquiries or rights and permissions requests should be directed to the individual publisher as copyright holder.

BioOne is an innovative nonprofit that sees sustainable scholarly publishing as an inherently collaborative enterprise connecting authors, nonprofit publishers, academic institutions, research libraries, and research funders in the common goal of maximizing access to critical research.

Scanning electron microscope observations on the antennal sensilla of two stored grain pests *Trogoderma granarium* and *Trogoderma variabile* (Coleoptera: Dermestidae)

Chunyan Wei^{1,2}, Bingzhong Ren^{1,*}, Xin Chen¹, Xiao Zhou², Weili Wang² and Zhenguo Wang²

Abstract

In this study both adult male and female antennal sensilla of *Trogoderma granarium* Everts, 1896 and *Trogoderma variabile* Ballion, 1878 (Coleoptera: Dermestidae) were observed by scanning electron microscope. The antennae of both species were found to consist of a scape, a pedicel and a flagellum with 9 subsegments, i.e., flagellomeres. Four categories of antennal sensilla including 10 types were found in these 2 species. The sensilla were designated, sensilla chaetica I, sensilla chaetica II, sensilla chaetica III, sensilla basiconica I, sensilla basiconica II, sensilla basiconica III, sensilla basiconica IV, sensilla basiconica V, sensilla coeloconica and Böhm bristles. The characteristics and distribution of these antennal sensilla were described, and relevant differences between the male and the female were compared. Finally, the probable functions and their applications in taxonomy were briefly discussed. These findings provide an improved understanding of the morphology of the antennae in these 2 species and can help to distinguish them clearly. Besides, these results also will support investigations into adaptations of these *Trogoderma* species to storage environments.

Key Words: adaptation; sensilla chaetica; sensilla basiconica; sensilla coeloconica; Böhm bristles; scanning electron microscopy (SEM)

Resumen

En este estudio, se observaron por microscopía electrónica de barrido, las sensilas de las antenas de los machos y hembras de *Trogoderma granarium* Vuelca, 1896 y *Trogoderma variabile* Ballion, 1878 (Coleoptera: Dermestidae). Se encontró que las antenas de ambas especies consisten en un escapo, un pedicelo y un flagelo con 9 subsegmentos, los que se llaman flagelómeros. Se encontraron tres categorías, incluyendo 10 tipos de sensilas antenales en estas 2 especies. Las sensilas fueron designadas, Sensila quéticas I, Sensila quéticas II, Sensila quéticas III, Sensila basiconica I, Sensila basiconica II, Sensila basiconica III, Sensila basiconica IV, Sensila basiconica V, Sensila basiconica VI, Sensila coeloconica y setas Böhm. Se describen las características y la distribución de estas sensilas antenales y se comparan las diferencias relevantes entre las del macho y la hembra. Por último, se discuten brevemente las funciones probables y sus aplicaciones en la taxonomía. Estos resultados aportan una mejor comprensión de la morfología de las antenas en estas 2 especies y su apoyo en la investigación de las adaptaciones de estas especies *Trogoderma* a los ambientes de almacenaje.

Palabras Clave: adaptación; flagelómero; sensilas quéticas; sensilas basiconicas; setas Böhm; microscopía electrónica de barrido (SEM)

Trogoderma granarium Everts, 1898 and *Trogoderma variabile* Ballion, 1878 (Coleoptera: Dermestidae) are the most widespread storage pests around the world. They can tremendously damage animal and vegetable products including grains and grain products, seeds, furs, leathers, silks, etc. (Campbell et al. 2002; Bell & Wilson 1995). *Trogoderma granarium* is even a more serious pest than *T. variabile*, and it is one of the most concerning quarantine pests in the world (Gomah 2014). Larvae of *T. granarium* can indirectly cause stored commodities to heat up and rot, and thereby cause great economic losses every year. In addition, *Trogoderma* infestations may pose a human health hazard because of the larval exu-

via, which can contaminate food, may be allergenic. *Trogoderma variabile* has adapted to a large variety of food materials (Burgess 1960), and dense populations of the larvae are often found in stored food materials, where they cause great damage. These insects are difficult to control because they tolerate fairly high and low temperatures, survive in very dry environments and are resistant to many insecticides (Bell & Wilson 1995). When they are in a favorable environment, they reproduce rapidly and readily destroy 20% of the stored materials. These dermestid species have similar morphologies, share similar habitats, exhibit similar behaviors, so it is difficult to distinguish between them (Zhao 1966).

¹Jilin Key Laboratory of Animal Resource Conservation and Utilization, School of Life Sciences, Northeast Normal University, Renmin St. 5268, Changchun 130024, P.R. China

²Jilin Entry-Exit Inspection and Quarantine Bureau, Puyang St. 1301, Changchun 130062, P.R. China

*Corresponding author; E-mail: bzren@163.com

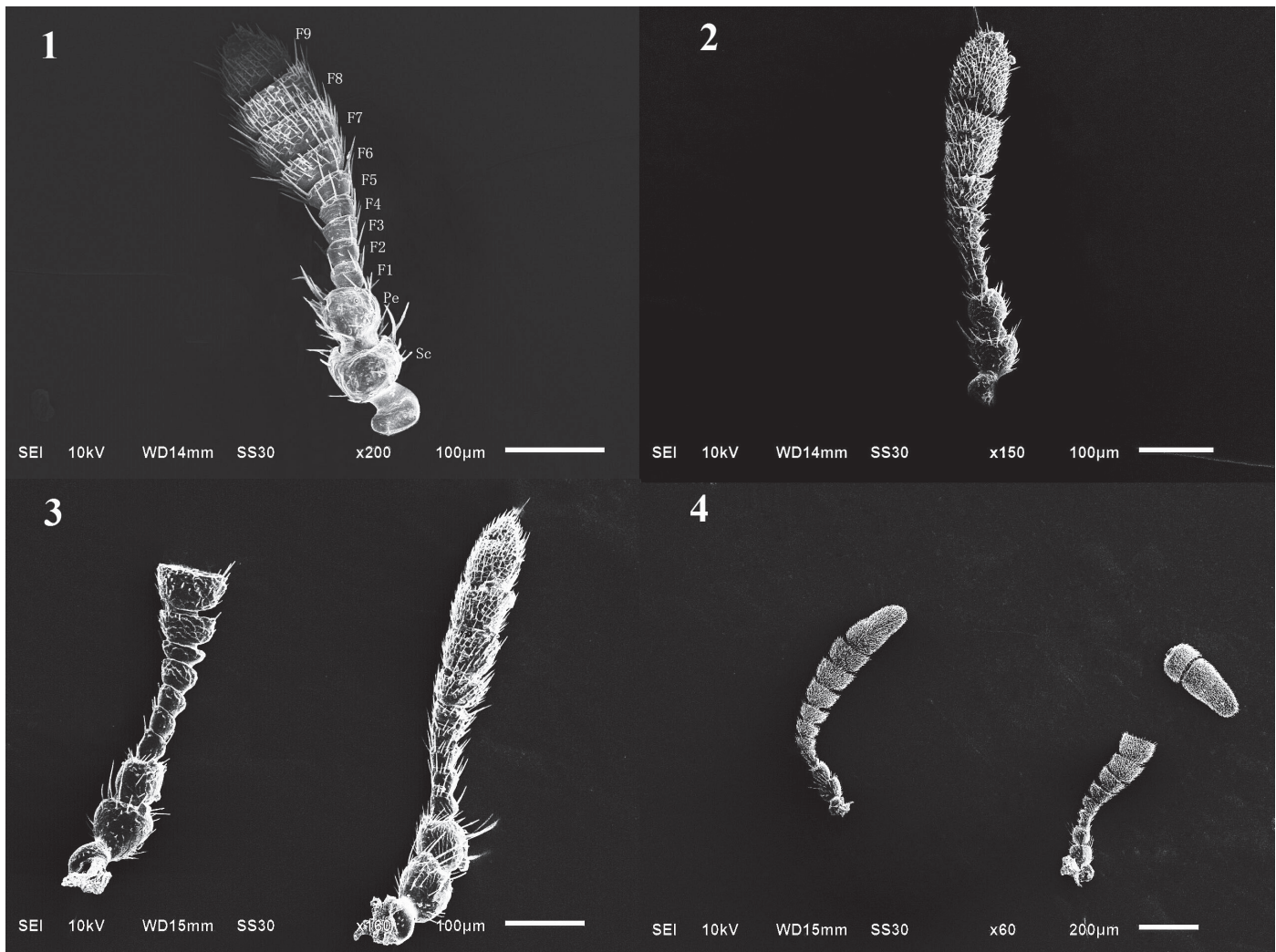


Fig. 1 (1–4). Full views of antenna of *T. granarium* and *T. variabile*. **1.** Antenna of female *T. granarium*; **2.** Antenna of male *T. granarium*; **3.** Antenna of female *T. variabile*; and **4.** Antenna of male *T. variabile*.

Many adaptations have occurred during the evolution of insects, which are manifested in food selection, foraging, courtship, mating, reproduction, rest, defense, migration, etc. For that they lived in partially or completely dark environments, so mechanical signals are important for the species in this genus and they are also affected by many chemicals including their sex pheromone, insecticides, repellents, food attractants, etc. (Levinson & Ilan 1970; Sattar et al. 2010; Ahmad et al. 2013; Olson 2013). Thus, detailed knowledge of the morphologies of the major sense organs – especially the antenna and the antennal sensilla – is critically important. Recent publications on coleopteran antennal sensilla are fairly numerous and they include studies on *Lasioderma serricorne* F. (Anobiidae) (An et al. 2009), *Callosobruchus maculatus* (F.), *Callosobruchus chinensis* Latreille (Chrysomelidae) (Hu et al. 2009), *Odoiporus longicollis* Oliver (Curculionidae) (Gao et al. 2011), *Scolytus schevyrewi* Semenov (Curculionidae) (Fan et al. 2011), *Agriotes obscurus* (L.) (Elateridae) (Merivee et al. 1997) and *Psylliodes chrysocephala* L. (Chrysomelidae) (Isidoro 1998).

Different sensillum type has different functions and different species have different types of sensillum. Alabi (2014) showed that they found five sensillum types on the club of the antenna of both sexes of *Tribolium brevicornis*, represent the most prominent stored food product pests worldwide. While, until now, no detailed reports on the antennal sensilla of *T. granarium* and *T. variabile* antennae have been published. In this

study, the antennal sensilla of *T. granarium* and *T. variabile* were observed by scanning electron microscopy (SEM). Detailed observations were performed on the quantity, type, distribution and gender variations of the antennal sensilla. The results provide useful information for future functional studies on clarifying the relationship between chemical receptors and behavior, and assist in the overall classification of the sensilla.

Material and Methods

STUDIED MATERIAL

Trogoderma granarium specimens were captured from imports of mung from Muse, Burma (N 23° 58' 45" E 97° 54' 17"), and *T. variabile* specimens were collected from storage facilities in Dandong (N 40° 07' E 124° 23'), Liaoning Province, China. The sample size of each of these 2 species was 20 (10 males and 10 females).

SCANNING ELECTRON MICROSCOPE (SEM) OBSERVATION

Antennae were carefully excised from the antennal sockets with fine forceps under a stereomicroscope. The antennae were first stored in a 70% ethanol solution. They were then cleaned for 3 min by ultrasonic waves and then dehydrated by an ethanol serial solutions

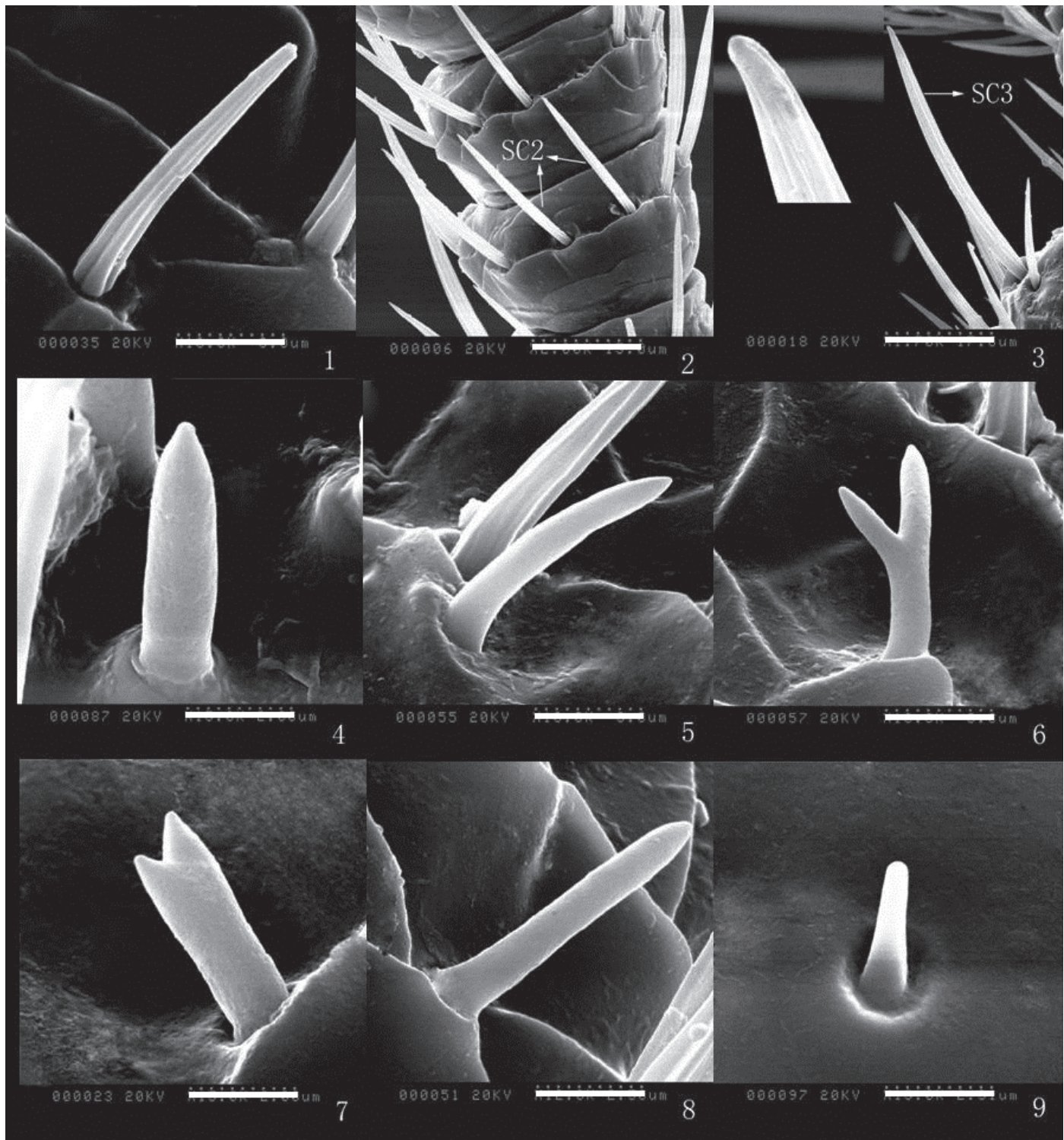


Fig. II (1–9). Antennal sensilla of *T. granarium*. **1.** SC1: sensilla chaetica 1 bar = 5.0 μm ; **2.** SC2: sensilla chaetica 2, bar = 15.0 μm ; **3.** SC3: sensilla chaetica 3, bar = 17.2 μm ; **4.** SB1: sensilla basiconica 1, bar = 2.0 μm ; **5.** SB2: sensilla basiconica 2, bar = 3.0 μm ; **6.** SB3: sensilla basiconica 3, bar = 3.0 μm ; **7.** SB4: sensilla basiconica 4, bar = 2.0 μm ; **8.** SB5: sensilla basiconica 5, bar = 2.5 μm ; and **9.** BB: Böhm bristles, bar = 2.3 μm .

(75%, 80%, 85%, 90% to 100%), with a 10 min interval between solutions. Five pairs of antennae of each species were mounted on the ventral or dorsal side on a sticky tape, and then sputter coated with gold/palladium. The specimens were examined by a Hitachi S-570 SEM set at 20 kV. Micrographs of the antennae, antennomeres and sensilla were taken.

DATA ANALYSIS

Photoshop 7.0 image processing software was used, and each part of antennae sensilla was measured using Smile View (Ver. 2.71) software. SPSS17.0 was used to produce the statistical results expressed as mean \pm SE.

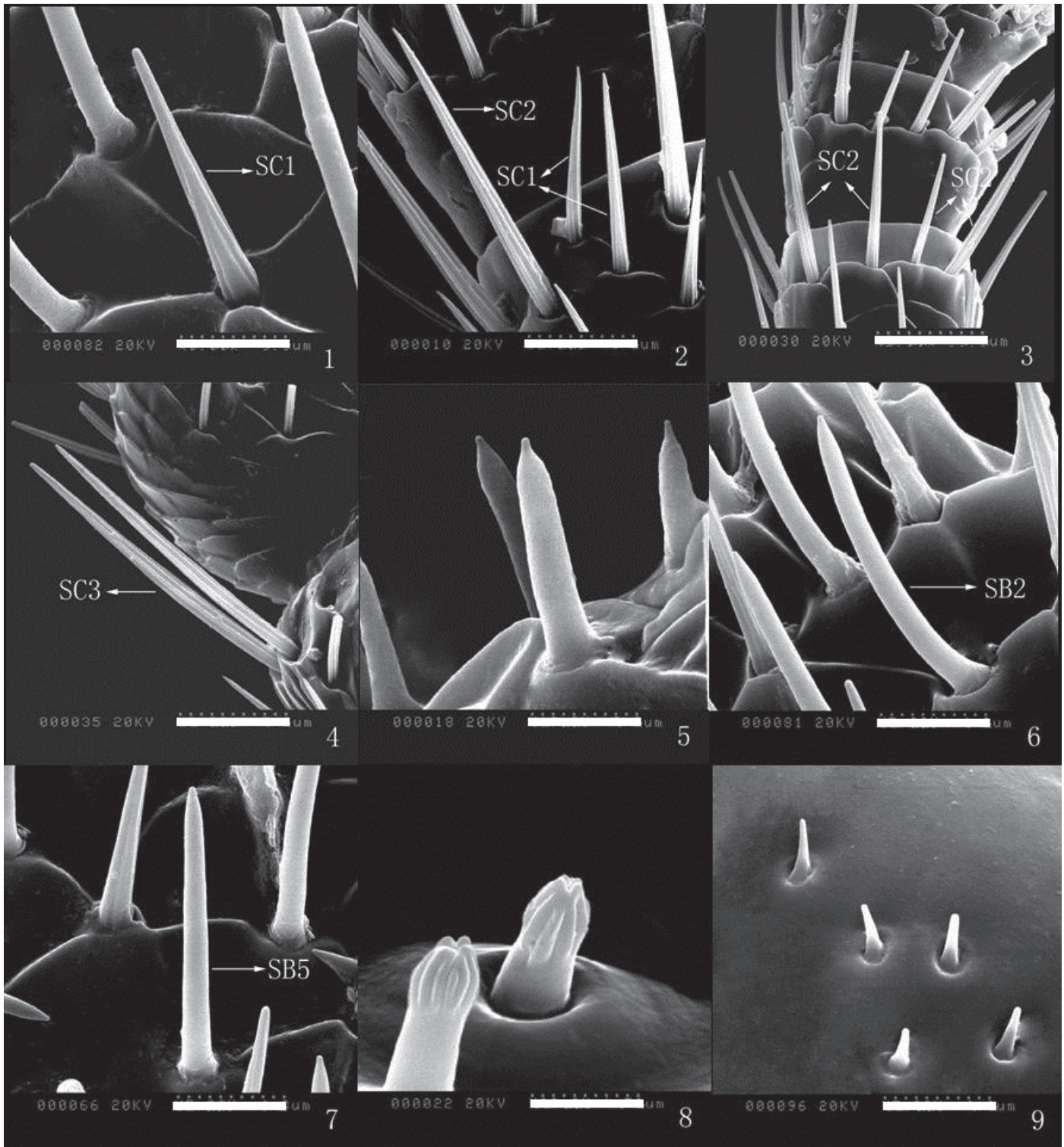


Fig. III (1–9). Antennal sensilla of *T. variabile*. **1.** SC1: sensilla chaetica 1, bar = 3.0 µm; **2.** SC2: sensilla chaetica 2; SC3: sensilla chaetica 3, bar = 8.6 µm; **3.** SC2: sensilla chaetica 2, bar = 15 µm; **4.** SC3: sensilla chaetica 3, bar = 15.0 µm; **5.** SB1: sensilla basiconica 1, bar = 3.0 µm; **6.** SB2: sensilla basiconica 2, bar = 4.3 µm; **7.** SB5: sensilla basiconica 5, bar = 4.3 µm; **8.** SCo: sensilla coeloconica, bar = 1.5 µm; and **9.** BB: Böhm bristle, bar = 6.0 µm.

SENSILLA NOMENCLATURE

Sensilla were named according to Schneider (1964), Altner (1977) and Zacharuk (1985). The morphology and distribution of sensilla were observed, and the number of sensilla was determined on both

the ventral and the dorsal side. Four groups totaling 20 antennae were observed ventrally (5 females and 5 males) and dorsally (5 females and 5 males). The types of antennae sensilla were named according to Schneider (1964) and the nomenclature of Zacharuk (1980, 1985), then compared with the sensilla of other coleopterans.

Table 1. Mean lengths (µm) of antennal segments of *Trogoderma granarium* and *Trogoderma variabile* (n = 5).

Species	Sex	Scape	Pedicel	Flagellomere									Total Length
				1	2	3	4	5	6	7	8	9	
<i>T. granarium</i>	Female	52.000 ± 10.213	50.680 ± 10.376	26.140 ± 6.754	24.180 ± 11.741	20.080 ± 3.743	18.620 ± 3.789	21.0800 ± 5.223	38.780 ± 28.117	38.760 ± 5.352	43.300 ± 5.888	72.640 ± 4.324	403.666 ± 48.787
	Male	52.000 ± 4.670	62.780 ± 3.753	25.280 ± 0.396	21.440 ± 0.780	22.720 ± 0.999	24.300 ± 9.715	29.7200 ± 3.734	41.240 ± 2.053	50.780 ± 5.693	49.320 ± 3.933	108.78 ± 8.411	492.925 ± 15.854
<i>T. variabile</i>	Female	70.600 ± 3.006	66.720 ± 3.405	35.820 ± 4.090	30.640 ± 3.909	28.220 ± 2.319	29.580 ± 4.907	23.2000 ± 1.027	37.040 ± 4.206	51.380 ± 6.211	58.040 ± 8.319	107.620 ± 2.935	533.500 ± 33.348
	Male	61.100 ± 5.097	56.460 ± 2.865	31.520 ± 0.716	31.960 ± 1.396	41.500 ± 1.387	49.800 ± 1.810	56.8200 ± 0.870	74.280 ± 0.804	83.060 ± 2.688	80.440 ± 0.445	225.300 ± 2.980	801.425 ± 6.097

Results

GENERAL STRUCTURE OF THE ANTENNAE

Most antennae of both species had a hammerhead shape with 11 segments, but some had only 9 or 10 segments. Antennae extended from between the compound eyes. The antennae consisted of 3 parts: a proximal scape, a pedicel, and a distal flagellum, with the latter composed of 9 flagellomeres (Fig. I). The antenna of males was longer than those of females. Antennal fossae were deep (Fig. II).

The length of the distal flagellomere (flagellomere 9) was approximately equal to the sum of lengths of the ninth and tenth antennal segments (flagellomeres 7 + 8). The male antenna was 492.925 µm ± 15.854 µm long, while the female’s antenna was 403.666 µm ± 48.787 µm long (Table 1).

The *T. variabile* male had 7–8 flagellomeres in his antennal club and the length of the proximal flagellomeres (flagellomeres 2–8) was about 2 times the length the distal flagellomere (flagellomere 9). In females, the length of the distal flagellomere (flagomere 9) was almost equal to the length of the 3 proximal flagellomeres (flagellomeres 6–8). *Trogoderma variabile* male and female antennae were 533.500 µm ± 33.348 µm and 801.425 µm ± 6.097 µm in length, respectively (Table 1).

ANTENNAL SENSILLA OF TWO SPECIES IN GENUS *TROGODERMA*

Based on morphology, surface characteristics and growth position, 10 types of sensilla on the antennae of both female and male were recognized including 4 types of sensilla chaetica (SC1, SC2 and SC3), 5 types of sensilla basiconica (SB1, SB2, SB3, SB4 and SB5), 1 type of sensilla coeloconica (SCo) and Böhm bristles (BB) (Table 2). The approximate number and distribution of various sensilla types on each antennal segment of the 2 sexes are listed in Table 3 and Table 4, and elaborated below.

SENSILLUM CHAETICUM I [SC1, FIGS. II (1) AND III (1)]

The SC1 presented the form of comparatively small straight bristle with longitudinal grooves wider at the base and tapering toward the apex. The top of SC1 is blunt and the bristle leans along the antenna axis toward the apex. These sensilla are located on the scape and the pedicel of the antennal surface in both males and females, being on flagellomeres 6– 9 in males and on flagellomeres 2–9 in females (Fig. II (1) & III (1)). SC1 are 11.230 µm ± 0.453 µm long and 1.435 µm ± 0.062 µm wide at the base.

SENSILLUM CHAETICUM II [SC2, FIGS. II (2) AND III (2 & 3)]

SC2 are the most widespread sensilla, and are present in the largest numbers, being found on each part of the antenna in both the female and the male. However, the arrangement of SC2 is a circular permutation on the last 6 flagellomeres. They are set in an open socket, and present obvious longitudinal grooves on the cuticular surface. The sensilla are very close to the surface and point toward the tip of the antenna (Figs. II (2) and III (2 & 3)). SC2 are 23.620 µm ± 1.137 µm long and 1.905 µm ± 0.090 µm wide at the base.

SENSILLUM CHAETICUM III [SC3, FIGS. II (3) AND III (2 & 4)]

The SC3 look like long sickle-shaped bristles that exist only on the scape and the pedicel (Fig. II (3) & III (2 & 4)). They are longer than

Table 2. Morphological types of antennal sensilla of *Trogoderma granarium* and *Trogoderma variabile* (n = 20).

Types of sensilla	Morphological characteristics of sensilla					
	Length (µm)	Diameter(µm)	Tip	Wall	Shape	Socket
BB	4.080 ± 0.221	1.035 ± 0.043	Sharp	Smooth	Straight	Wide
SC1	11.230 ± 0.453	1.435 ± 0.062	Blunt	Grooved	Straight	Wide
SC2	23.620 ± 1.137	1.905 ± 0.090	Blunt	Grooved	Straight	Wide
SC3	45.094 ± 1.630	2.740 ± 0.093	Blunt	Grooved	Straight	Wide
SB1	6.295 ± 0.395	1.610 ± 0.084	Blunt	Smooth	Straight	Tight
SB2	7.165 ± 1.360	1.360 ± 0.042	Blunt	Smooth	Straight	Tight
SB5	15.658 ± 1.575	1.575 ± 0.065	Blunt	Smooth	Curved	Tight

Measurements: (mean ± SE) obtained from a total of 20 sensilla per type from antennae of males and females (10 per sex).

BB: Böhm bristles; SC1: Sensilla chaetica 1; SC2: Sensilla chaetica 2; SC3: Sensilla chaetica 3; SB1: Sensilla basiconica 1; SB2: Sensilla basiconica 2; SB5: Sensilla basiconica 5.

other sensilla with a mean length of 45.094 µm ± 1.630 µm and a mean base width of 2.740 µm ± 0.093 µm. SC3 are located in an open articulating socket. The angle between the sensillum and antenna ranges from 60 ° to 80 °. They are characterized by a longitudinally grooved ridge that narrows toward the tip.

SENSILLUM BASICONICUM I [SB1, FIG. II (4) AND III (5)]

SB1 are straight, conical, smooth-walled without longitudinal grooves, and blunt-tipped with a distinctive droplet shape at the tip. There are pores on the surface of this type of sensillum (Fig. II (4) & III (5)). This sensillum is 6.295 µm ± 0.395 µm long and 1.610 µm ± 0.084 µm wide at the base. They are situated as a dense group at the joints of flagellomeres 6 – 9 and on the foreside of flagellomere 9.

SENSILLUM BASICONICUM II [SB2, FIG. II (5) AND III (6)]

Shaped like curved fingers, SB2 sensilla are gradually curved toward the apex and insert into a broaden pedestal, which is raised slightly above the cuticle and is rather thick with a conical tip. They are located in different areas of the flagellum of females and males (Fig. II (5) & III (6)). In *T. granarium* SB2 sensilla are dispersed on segments 6 – 9 in males, but on the segments 8–9 in females. In *T. variabile* they are distributed on segments 2–9 in males, but these sensilla only appear on segment 9 in females. SB2 sensilla were 7.165 µm ± 1.360 µm long and 1.360 µm ± 0.042 µm wide at the base.

SENSILLUM BASICONICUM III [SB3, FIG. II (6)]

The SB3 sensillum has an appearance similar to the Latin letter “Y”. Both tips are cone-shaped, short, and blunt (Fig. II (6)). This type of

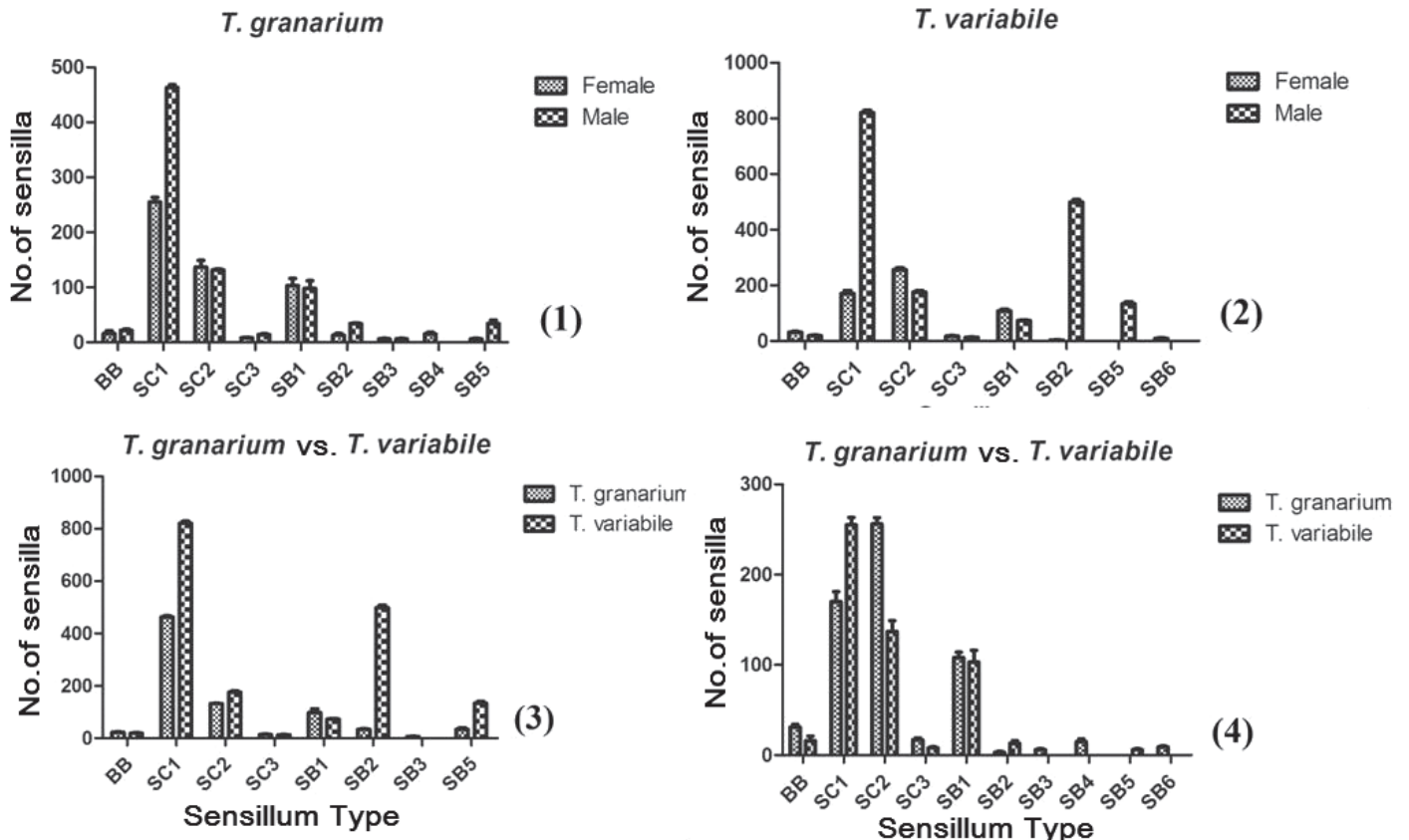


Fig. IV (1–4). Comparisons of antennal sensilla between *Trogoderma* species and sexual genders. **1.** Male and female sensilla of *T. granarium*; **2.** Male and female sensilla of *T. variabile*; **3.** Male antenna of *T. granarium* and *T. variabile*; and **4.** Female antenna of *T. granarium* and *T. variabile*.

sensillum is only found in the dorsal side on the antennal surface of *T. granarium* in both males and females. The distance from the highest tip to the base is $5.276 \mu\text{m} \pm 0.842 \mu\text{m}$ and $4.892 \mu\text{m} \pm 0.553 \mu\text{m}$ from the second highest tip to the base. The distance of lowest point to the base is $3.430 \mu\text{m} \pm 0.554 \mu\text{m}$ and the base is $1.044 \mu\text{m} \pm 0.568 \mu\text{m}$ wide.

SENSILLUM BASICONICUM IV [SB4, FIG. II (7)]

The SB4 sensillum has a bifurcated tip, which looks like the Latin letter "V" (Fig. II (7)). SB4 is observed only on flagellomeres 6–9 of *T. granarium* males. The length from the highest point to the base is $4.580 \mu\text{m} \pm 0.199 \mu\text{m}$, and the distance of the second highest point to the base is $3.834 \mu\text{m} \pm 0.156 \mu\text{m}$ and that of the lowest point to the base is $3.150 \mu\text{m} \pm 0.233 \mu\text{m}$. The base is $1.510 \mu\text{m} \pm 0.091 \mu\text{m}$ wide.

SENSILLUM BASICONICUM V [SB5, FIGS. II (8) AND III (7)]

The SB5 sensillum has surface properties similar to those of SB2, but it stands up right like an erect finger (Fig. II (8) & III (7)). SB5 sensilla are $15.658 \mu\text{m} \pm 1.575 \mu\text{m}$ long and $1.575 \mu\text{m} \pm 0.065 \mu\text{m}$ wide at the base. SB5 sensilla are located on the flagellomeres 8–9 of the female and on flagellomeres 6–9 of *T. granarium* males, and they also present on flagellomeres 2–9 of the male of *T. variabile* males.

SENSILLUM COELOCONICA [SCO, FIG. III (8)]

Sensilla coeloconica were found on dense areas of sensilla and their tips gathered like flower buds (Fig. III (8)). They can only be found on the ninth flagellum in the female of *T. variabile*. These sensilla are the shortest of all the types, with a length of $2.574 \mu\text{m} \pm 0.113 \mu\text{m}$ and a width of $1.178 \mu\text{m} \pm 0.661 \mu\text{m}$.

BÖHM BRISTLES [BB, FIGS. II (9) AND III (9)]

Böhm bristles (BB) are shorter than sensilla trichodea and thinner than sensilla basiconica, mainly occurring in dense clusters on the bases of the antennal joints between the scape and the head and between the scape and the pedicel of female and male *T. granarium* and *T. variabile*. They are surrounded by a shallow cuticular socket with obtuse tops and smooth cuticles, standing almost perpendicular to the antennal surface (Fig. II (9) & III (9)). BB is $4.080 \mu\text{m} \pm 0.221 \mu\text{m}$ in length and $1.035 \mu\text{m} \pm 0.0428 \mu\text{m}$ in width.

COMPARISONS OF THE TYPES AND NUMBERS OF SENSILLA BETWEEN SPECIES AND SEXUAL GENDERS

The SC1 sensillum is the most abundant sensillum type in the studies (with the exception in female *T. granarium* in which SC2 is the most abundant), the number of SC1 sensilla in *T. variabile* was much greater than in *T. granarium*. Males had more sensilla of most types than females. It is noteworthy that the male of *T. variabile* had an extremely large number of SB2 type sensilla. Comparison data of the sensilla types between *T. granarium* and *T. variabile* species and between males and females are displayed in Fig. IV.

Discussion

SEXUAL DIMORPHISM

Our results showed total of 10 types of sensilla on the antennae of adult *T. granarium* and *T. variabile*, and the amount and distribution of sensilla varied with different segments. *T. granarium* had 9

types of sensilla, and lacked SCo. *T. variabile* had 8 types of sensilla, and lacked SB3 and SB5. Generally speaking, the male has a greater number of sensilla than the female in both *T. granarium* and *T. variabile*. A reason for this gender difference is that in these species the male's antenna is much longer than female's. For example, the number of SC1 sensilla in male was extremely large compared with the female, which suggested these sensilla serve some important functions, such as mechanical reception, in male of these species. However, some types of sensilla, like SB4 and SCo, are very much more numerous in females than males, so that the length of the antenna seems not to be the only determinant of the number of sensilla. The SC was commonly identified as mechanosensory/gustatory sensilla by RÜth (1976). Chemical signals are very important and affect foraging and many other biological functions in these *Trigoderma* species (Cohen et al. 1974). Also, a highly developed mechanosensory sensilla benefited species that lived in near darkness with very weak visual signals. Thus the males in these 2 *Trigoderma* species might possess a more sensitive mechanosensory/gustatory sense than the females. Also the *T. variabile* males possessed more SB2 sensilla than females. The SB2 sensilla are "poreless sensilla with inflexible sockets", and are thought to be thermo-hygroreceptive (Altner & Loftus 1985; Altner & Prillinger 1980; Altner et al. 1983), but we still do not know why the number of SB2 is so great in *T. variabile*.

There are no big differences in the numbers of Böhm bristles between males and females of both species. Many studies have demonstrated that Böhm bristles exist in the same anatomical location on many insects, so this is considered to be a separate type of sensilla. This sensillum is often found at the junction of the head and the scape, or at the junction of the scape and the pedicel. BB were deduced to be proprioceptors to perceive antennal movement and position by Ochieng et al. (2000) and Onagbola & Fadamiro (2008). Previous studies also shown that the BB of *T. granarium* and *T. variabile* had the functions of sensing mechanical stimulations, and that they induced a cushioning action when stimulated, and control the speed of antennal movement. As a result, there is no sexual dimorphism with respect to BB has been observed.

INTERSPECIES DIFFERENTIATION

The results demonstrate some quantitative differences concerning the sensilla between the two species. Thus, *T. variabile* males had many more SC1 and SB2 sensilla than *T. granarium* males, but in the female, *T. granarium* had more SC2 sensilla than *T. variabile*. More importantly, our results indicate the location of each type of sensilla was also somewhat different between the 2 species. SC and BB had the same anatomical location; SB other than SB1, all had different locations on the 2 species. In *T. granarium* SB2 and SB5 were mainly distributed on segments 6–9, but they were distributed on segments 2–9 in *T. variabile*; SB3 and SB4 were found only on *T. granarium*, and SCo only on *T. variabile*. As a result, these differences are sufficient to allow the correct identification of these species, and this overcomes the disadvantage of having to identify these 2 species based on other morphological characters, which differ very little. Some other reports also showed using micro structure characters of antenna in taxonomy was accurate and efficient, especially in some closely related species which were very similar in morphologies (Tan et al. 2012; González & Zaballos 2013).

The functions of sensilla and their significance to taxonomy described here are merely a starting point. More evidences need to be provided by transmission electron microscopy (TEM), single sensillum records (SSR) and other advanced techniques to confirm and expand on these findings.

Table 3. Abundance and distribution of different sensilla on the antenna of female and male *Trogoderma granarium*.

	BB		SC1		SC2		SC3		SB1		SB2		SB3		SB4		SB5		
	F	M	F	M	F	M	F	M	F	M	F	M	F	M	F	M	F	M	
<i>T. granarium</i>																			
Scape	9±5	11±2	12±4	16±4	15±4	9±1	4±1	7±2	0	0	0	0	0	0	0	0	0	0	0
Pedicel	7±1	11±1	12±7	17±2	14±2	16±1	4±1	7±1	0	0	0	0	0	0	0	0	0	0	0
1	0	0	0	0±0	8±1	8±1	0	0	0	0	0	0	0	0	0	0	0	0	0
2	0	0	0	1±1	8±1	7±1	0	0	0	0	0	0	0	0	0	0	0	0	0
3	0	0	0	3±2	8±1	9±1	0	0	0	0	0	0	0	0	0	0	0	0	0
4	0	0	0	10±7	7±1	11±3	0	0	0	0	0	0	0	0	0	0	0	0	0
5	0	0	0	29±9	12±2	10±1	0	0	0	0	0	0	0	0	0	0	0	0	0
6	0	0	26±8.4	33±5	15±1	13±2	0	0	10±5	8±2	6±1	0	0	2±0.5	0	0	0	5±1	
7	0	0	46±12	70±14	21±10	11±2	0	0	22±2	17±2	7±1	0	0	5±3	0	0	0	4±1	
8	0	0	63±8	76±24	21±6	29±11	0	0	37±2	31±14	5±1	10±1	0	4±1	0	0	2±1	7±1	
9	0	0	96±13	208±16	8±2	9±1	0	0	34±13	42±6	8±3	11±1	6±1	4±3	0	0	4±1	17±6	

Note: F means female; M means male.

Table 4. Abundance and distribution of different sensilla on the antenna of female and male *Trogoderma variabile*.

	BB		SC1		SC2		SC3		SB1		SB2		SB5		SC0		
	F	M	F	M	F	M	F	M	F	M	F	M	F	M	F	M	
<i>T. variabile</i>																	
Scape	22±3	15±1	14±2	11±1	26±2	33±3	10±2	13±1	0	0	0	0	0	0	0	0	0
Pedicel	8±2	4±1	9±1	9±7	32±3	36±4	7±2	0	0	0	0	0	0	0	0	0	0
1	0	0	0	0±0	11±1	15±2	0	0	0	0	0	0	0	0	0	0	0
2	0	0	0	14±3	12±2	14±6	0	0	0	0	0	10±2	0	1±1	0	0	0
3	0	0	0	45±4	14±2	14±2	0	0	0	0	0	19±3	0	4±1	0	0	0
4	0	0	0	53±6	18±2	9±2	0	0	0	0	0	35±2	0	4±2	0	0	0
5	0	0	0	76±3	15±1	18±2	0	0	0	0	0	41±3	0	18±1	0	0	0
6	0	0	14±2	117±4	34±6	19±3	0	0	20±4	4±1	0	60±8	0	28±3	0	0	0
7	0	0	31±2	123±4	35±7	8±5	0	0	28±3	22±2	0	56±4	0	19±6	0	0	0
8	0	0	29±5	147±5	28±3	9±5	0	0	36±6	16±2	0	62±6	0	13±2	0	0	0
9	0	0	73±11	225±9	31±2	0	0	0	24±3	31±2	3±1	216±9	0	47±4	0	0	9±1

Note: F means female; M means male.

Acknowledgments

We thank Sheng-Fang Zhang, China Inspection and Quarantine Academy of Sciences for assistance in specimen collection and Fu-Zhu Liu, Jilin Normal University, for expert assistance with the SEM technology. Also, we thank Robert Heipel, Lambton College of Jilin University, for assistance with the revised paper.

References Cited

- Ahmad F, Sagheer M, Hammad A, Rahnan SM, Hasan MU. 2013. Insecticidal activity of some plant extracts against *Trogoderma granarium* (E.). *The Agriculturists* 11: 103-111.
- Alabi T, Marion-Poll F, Danho M, Mazzucchelli GD, Pauw ED, Haubruge E, Francis F. 2014. Identification of taste receptors and proteomic characterization of the antenna and legs of *Tribolium brevicornis*, a stored food product pest. *Insect Molecular Biology* 23: 1-12.
- Altner H. 1977. Insect sensillum specificity and structure: An approach to a new typology, pp. 295-303 *In* Lemagnen J, MacLeod P [eds.], *Information Retrieval Ltd.*, London.
- Altner H, Loftus R. 1985. Ultrastructure and function of insect thermo- and hygroreceptors. *Annual Review of Entomology* 30:273-295.
- Altner H, Prillinger L. 1980. Ultrastructure of invertebrate chemo-, thermo- and hydrosensors and its functional significance. *International Review of Cytology* 67: 69-139.
- Altner H, Schaller SL, Stetter H, Wohlrab I. 1983. Poreless sensilla with inflexible sockets: A comparative study of a fundamental type of insect sensilla probably comprising thermo- and hydrosensors. *Cell and Tissue Research* 234: 279-307.
- An JJ, Li WZ, Yuan GH. 2009. Observation on antennal sensilla of *Lasioderma serricorne* with scanning electron microscope. *Chinese Bulletin of Entomology* 46: 714-718.
- Bell CH, Wilson SM. 1995. Phosphine tolerance and resistance in *Trogoderma granarium* Everts (Coleoptera: Dermestidae). *Journal of Stored Products Research* 31: 199-205.
- Campbell JF, Mullen MA, Dowdy AK. 2002. Monitoring stored-product pests in food processing plants with pheromone trapping, contour mapping, and mark-recapture. *Journal of Economic Entomology* 95: 1089-1101.
- Cohen E, Stanić V, Shulov A. 1974. Olfactory and gustatory responses of *Trogoderma granarium*, *Dermestes maculatus* and *Tribolium castaneum* to various straight-chain fatty acids. *Zeitschrift für Angewandte Entomologie* 76:303-311.
- Fan LH, Li YH, Zhang JT, Luo YQ, Zong SX, Yang MH. 2011. Antennae structure of *Scolytus schevyrewi* observed with a scanning electron microscope. *Scientia Silvae Sinicae* 47: 87-89.
- Gao JL, Yin T, Zhao DX, Wang YJ, Jiang J. 2011. Scanning electron microscopic observations of banana pseudostem weevil, *Odoiporus longicollis* Olivier (Coleoptera: Curculionidae) antennal sensilla. *Chinese Journal of Tropical Crops* 32: 471-474.
- Gomah EN. 2014. Chemical composition, insecticidal and repellence activities of essential oils of three *Achillea* species against the Khapra beetle (Coleoptera: Dermestidae). *Journal of Pest Science* 87: 273-283.
- González SP, Zaballos JP. 2013. Antennal morphology of the endogean carabid genus *Typhlocharis* (Coleoptera: Carabidae: Anillini): Description of sensilla and taxonomic implications. *Journal of Morphology* 274: 809-823.
- Hu F, Zhang GN, Wang JJ. 2009. Scanning electron microscopy studies of antennal sensilla of bruchid beetles, *Callosobruchus chinensis* (L.) and *Callosobruchus maculatus* (F.) (Coleoptera: Bruchidae). *Micron* 40: 320-326.
- Isidoro N, Bartlett E, Ziesmann J, Williams IH. 1998. Antennal contact chemosensilla in *Psylliodes chrysocephala* responding to cruciferous allelochemicals. *Physiological Entomology* 23: 131-138.
- Levinson HZ, Bar Ilan AR. 1970. Olfactory and tactile behaviour of the Khapra beetle, *Trogoderma granarium*, with special reference to its assembling scent. *Journal of Insect Physiology* 14: 561-572.
- Merivee E, Rahi M, Luik A. 1997. Distribution of olfactory and some other antennal sensilla in the male click beetle *Agriotes obscurus*. *International Journal of Insect Morphology and Embryology* 26: 75-83.
- Ochieng SA, Park KC, Zhu JW, Baker TC. 2000. Functional morphology of antennal chemoreceptors of the parasitoid *Microplitis croceipes* (Hymenoptera: Braconidae). *Arthropod Structure and Development* 29: 231-240.
- Olson RLO, Parsons CL, Cognato AI. 2013. Commercial sex-pheromone lures facilitate collection of skin and carpet beetles (Coleoptera: Dermestidae) in natural and urban environments. *Coleopterists Bulletin* 67: 370-376.
- Onagbola EO, Fadamiro HY. 2008. Scanning electron microscopy studies of antennal sensilla of *Pteromalus cerealellae* (Hymenoptera: Pteromalidae). *Micron* 39: 526-535.
- Rúth E. 1976. Elektrophysiologie der Sensilla Chaetica auf den Antennen von *Periplaneta americana*. *Journal of Comparative Physiology A* 105: 55-64.
- Sattar AE, Zaitoun AA, Farag MA, El Gayed SH, Harraz FMH. 2010. Chemical composition, insecticidal and insect repellent activity of *Schinus molle* L. leaf and fruit essential oils against *Trogoderma granarium* and *Tribolium castaneum*. *Natural Product Research* 24: 226-235.
- Schneider D. 1964. Insect antennae. *Annual Review of Entomology* 9: 103-122.
- Tan Q, Yan XF, Wen JB, Li ZY. 2012. Phylogenetic relationship of seven *Dendrolimus* (Lepidoptera: Lasiocampidae) species based on the ultrastructure of male moths' antennae and antennal sensilla. *Microscopy Research and Technique* 75: 1700-1712.
- Zacharuk RY. 1980. Ultrastructure and function of insect chemosensilla. *Annual Review of Entomology* 25: 27-47.
- Zacharuk RY. 1985. Antennae and sensilla, pp. 1-69 *In* Kerkut GA, Gilbert LY [eds.], *Comprehensive insect physiology, biochemistry and pharmacology*, vol. 6. Pergamon, Oxford, United Kingdom.
- Zhao YC, Li HX. 1966. A study of Chinese *Trogoderma* Berthold (Coleoptera, Dermestidae). *Acta Zootaxonomica Sinica*. 3: 245-254.