

Accelerated construction of a regional DNA-barcode reference library: caddisflies (Trichoptera) in the Great Smoky Mountains National Park

Authors: Zhou, Xin, Robinson, Jason L., Geraci, Christy J., Parker, Charles R., Flint, Oliver S., et al.

Source: Journal of the North American Benthological Society, 30(1) : 131-162

Published By: Society for Freshwater Science

URL: <https://doi.org/10.1899/10-010.1>

BioOne Complete (complete.BioOne.org) is a full-text database of 200 subscribed and open-access titles in the biological, ecological, and environmental sciences published by nonprofit societies, associations, museums, institutions, and presses.

Your use of this PDF, the BioOne Complete website, and all posted and associated content indicates your acceptance of BioOne's Terms of Use, available at www.bioone.org/terms-of-use.

Usage of BioOne Complete content is strictly limited to personal, educational, and non-commercial use. Commercial inquiries or rights and permissions requests should be directed to the individual publisher as copyright holder.

BioOne sees sustainable scholarly publishing as an inherently collaborative enterprise connecting authors, nonprofit publishers, academic institutions, research libraries, and research funders in the common goal of maximizing access to critical research.

Accelerated construction of a regional DNA-barcode reference library: caddisflies (Trichoptera) in the Great Smoky Mountains National Park

Xin Zhou^{1,8}, Jason L. Robinson^{2,9}, Christy J. Geraci^{3,10}, Charles R. Parker^{4,11}, Oliver S. Flint, Jr.^{3,12}, David A. Etnier^{2,13}, David Ruitter^{5,14}, R. Edward DeWalt^{6,15}, Luke M. Jacobus^{7,16}, AND Paul D. N. Hebert^{1,17}

¹ Biodiversity Institute of Ontario, University of Guelph, 50 Stone Road East, Guelph, Ontario Canada N1G 2W1

² Department of Ecology and Evolutionary Biology, University of Tennessee, Knoxville, Tennessee 37996 USA

³ Department of Entomology, National Museum of Natural History, Smithsonian Institution, Washington, DC 20013 USA

⁴ US Geological Survey, Biological Resources Discipline, 1314 Cherokee Orchard Road, Gatlinburg, Tennessee 37738 USA

⁵ 6260 S Grant Street, Centennial, Colorado 80121 USA

⁶ Illinois Natural History Survey, 1816 S Oak St., Champaign, Illinois 61820 USA

⁷ Department of Biology, Indiana University, Bloomington, Indiana 47405 USA

Abstract. Deoxyribonucleic acid (DNA) barcoding is an effective tool for species identification and life-stage association in a wide range of animal taxa. We developed a strategy for rapid construction of a regional DNA-barcode reference library and used the caddisflies (Trichoptera) of the Great Smoky Mountains National Park (GSMNP) as a model. Nearly 1000 cytochrome c oxidase subunit I (COI) sequences, representing 209 caddisfly species previously recorded from GSMNP, were obtained from the global Trichoptera Barcode of Life campaign. Most of these sequences were collected from outside the GSMNP area. Another 645 COI sequences, representing 80 species, were obtained from specimens collected in a 3-d bioblitz (short-term, intense sampling program) in GSMNP. The joint collections provided barcode coverage for 212 species, 91% of the GSMNP fauna. Inclusion of samples from other localities greatly expedited construction of the regional DNA-barcode reference library. This strategy increased intraspecific divergence and decreased average distances to nearest neighboring species, but the DNA-barcode library was able to differentiate 93% of the GSMNP Trichoptera species examined. Global barcoding projects will aid construction of regional DNA-barcode libraries, but local surveys make crucial contributions to progress by contributing rare or endemic species and full-length barcodes generated from high-quality DNA. DNA taxonomy is not a goal of our present work, but the investigation of COI divergence patterns in caddisflies is providing new insights into broader biodiversity patterns in this group and has directed attention to various issues, ranging from the need to re-evaluate species taxonomy with integrated morphological and molecular evidence to the necessity of an appropriate interpretation of barcode analyses and its implications in understanding species diversity (in contrast to a simple claim for barcoding failure).

Key words: DNA barcoding, mitochondrial DNA, COI, aquatic insects, molecular identification, biomonitoring, biodiversity, ATBI.

⁸ E-mail addresses: xinzhou@uoguelph.ca

⁹ jrobin30@utk.edu

¹⁰ geracic@si.edu

¹¹ chuck_parker@usgs.gov

¹² flinto@si.edu

¹³ dipnet@utk.edu

¹⁴ druitter@msn.com

¹⁵ edewalt@inhs.uiuc.edu

¹⁶ luke.jacobus@gmail.com

¹⁷ phebert@uoguelph.ca

Deoxyribonucleic acid (DNA) barcoding uses a short, standardized segment of the mitochondrial cytochrome c oxidase subunit I (COI) gene to identify animal species (Hebert et al. 2003). It is an effective method in varied animal lineages including several major freshwater insect groups—mayflies (Ephemeroptera) (Ball et al. 2005), caddisflies (Trichoptera) (Hogg et al. 2009, Zhou et al. 2009, 2010), midges (Diptera:Chironomidae) (Ekrem et al. 2007), and black flies (Diptera:Simuliidae) (Rivera and Currie 2009). This approach is particularly valuable for aquatic insects because it enables identification of larval stages and females that often would otherwise remain taxonomically ambiguous (for caddisflies, see Shan et al. 2004, Graf et al. 2005, 2009a, b, Zhou et al. 2007, Waringer et al. 2008, Pauls et al. 2009, Zhou 2009). This capability has stimulated growing interest in developing barcode libraries that allow identification of regional faunas of aquatic insects.

The work involved in constructing regional barcode libraries depends on the nature of sequence variation within lineages of a species. If patterns of intraspecific variation are complex and geographic divergence is large, effective barcode-based diagnostic systems must be based on a reference barcode library for each locality. If sequence profiles for most species show little regional divergence, each reference barcode library can be created by amalgamating local data with barcode records gathered over a broader area. A major benefit of the amalgamation approach is that it overcomes the difficulty of obtaining specimens of uncommon species, which make up a substantial number of the species in any local fauna. Amalgamation of records from multiple localities aids construction of a comprehensive library because many locally rare species may be common at another site.

Few studies have examined enough taxa at a large enough geographic scale to provide a good sense of the extent of geographic variation in barcode sequences. However, analysis of >1000 species of lepidopterans across the eastern ½ of North America showed that barcode variation was very limited within species, even between collection localities that were thousands of kilometers apart (Hebert et al. 2010). Reason exists to expect a similar pattern in other terrestrial and marine groups, but freshwater species may show more regional variation because of the discontinuous nature of the habitats they occupy. Repeated extinctions of Nearctic aquatic insects over large parts of their range during the Quaternary and subsequent recolonizations from southern refugia may have enabled maintenance of substantial regional genetic diversity (Hewitt 2000). Therefore, sequence variation must be examined on a large scale for a wide

range of taxa to test the level of local effort required to achieve a comprehensive regional library.

We used the Trichoptera fauna of the Great Smoky Mountains National Park (GSMNP, southeastern USA) as a model system to test the effort needed to construct a regional barcode library. The GSMNP is the target of the first All Taxa Biodiversity Inventory (ATBI) in a national park (Nichols and Langdon 2007). The GSMNP is an ideal locality in which to test the effectiveness of DNA barcoding because of its high level of biodiversity in the temperate region, a consequence of its highly diversified habitats and the fact that this region has never been glaciated (Flint 1971). Aquatic insect diversity has been studied extensively in the GSMNP (Stoneburner 1977, Morse et al. 1993, 1998, Parker 1998, 2000, Etnier et al. 2004, DeWalt and Heinold 2005, DeWalt et al. 2007, Parker et al. 2007). Caddisflies, one of the most diverse freshwater insect groups, are particularly species-rich in the GSMNP. Two hundred thirty-one species, representing ¼ of the North American fauna, have been reported from this region (Parker et al. 2007). However, immature forms and females of many caddisfly species in the GSMNP remain difficult or impossible to identify. This problem is a serious roadblock to a major goal of the ATBI—compiling information on the natural history and ecological role of each species (Nichols and Langdon 2007). A DNA-barcode reference library for the GSMNP caddisflies would enable the identification of immatures and females, aid detection of rare species, and provide a first measure of genetic diversity within the focal fauna. Only 1 caddisfly species (*Neophylax kolodskii* Parker) is thought to be endemic to the GSMNP. Most (88%) of the resident species are widely distributed throughout the eastern US and Canada (Parker et al. 2007). This fact provided the rationale for rapid construction of a reference library for the GSMNP fauna by including barcode records for caddisflies from other sites in North America.

Our general goal is to develop a strategy for rapid construction of regional barcode libraries. Work in GSMNP began with a bioblitz (short-term, intense sampling program) in the spring of 2007. The goal was to obtain fresh samples of as many Trichoptera species as possible for barcode analysis. This brief effort yielded a limited number of the species known from the GSMNP because of the strong seasonality of many caddisflies. However, the species gathered during this effort did provide a basis for ascertaining whether a barcode reference library constructed solely from species records obtained from a global barcoding effort (Trichoptera Barcode of Life [TBoL]; www.trichopterabol.org), most of which were collected outside the focal area, would

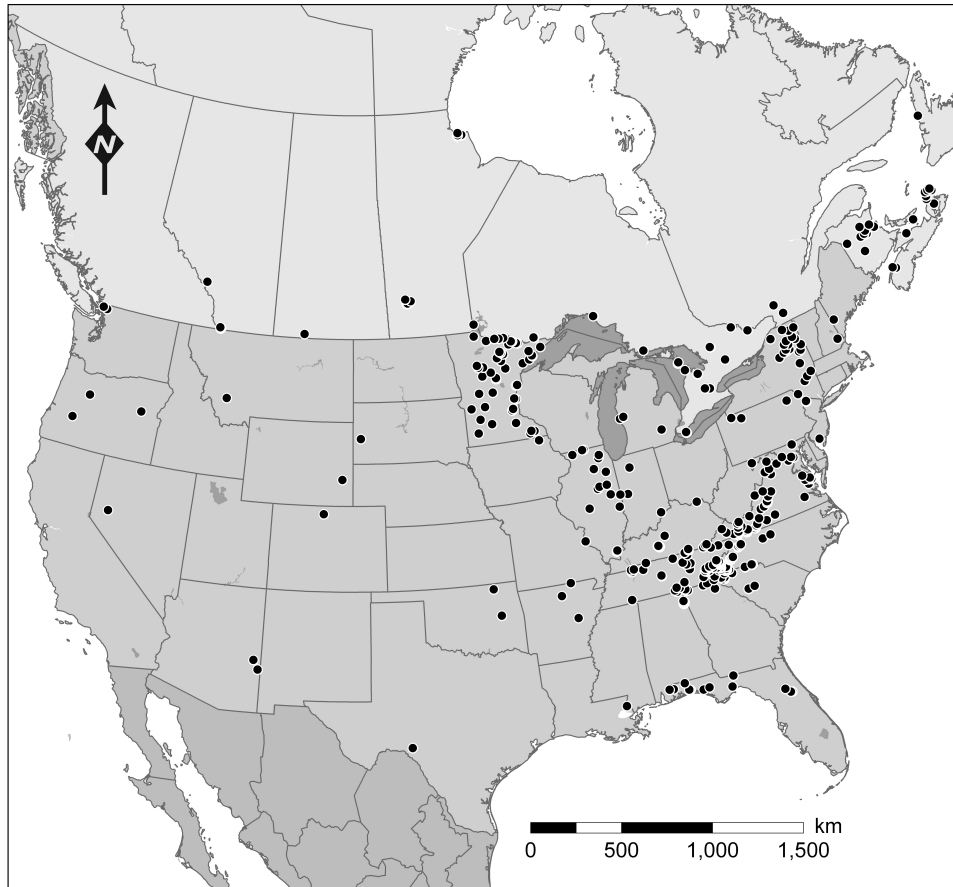


FIG. 1. Distribution map for 1638 caddisfly samples analyzed in our study.

generate different identifications than a library supplemented by records from within GSMNP through local biotic surveys.

Materials and Methods

Bioblitz survey

A bioblitz survey was conducted from 16 to 18 May 2007 by a team of 12 taxonomic specialists and volunteers. Adult caddisflies were collected with UV light traps and sweep nets. Larvae and pupae were collected with kick nets and by hand. Species or morphospecies were sorted into separate vials to minimize the chance of cross contamination. As many specimens as possible were morphologically identified to species in a 2-d session after collection. When discrepancies between these morphological assignments and COI assignments were detected, specimens were re-examined by specialists.

Trichoptera samples from other regions

Barcode records from specimens of Trichoptera species known from the GSMNP, but obtained

through the TBoL effort, most of which were collected from other localities in North America, were used to create a barcode library with coverage for as many species as possible. Samples from much of the eastern US and Canada were included in our analyses (Fig. 1), but samples from other regions, e.g., Ozarks, Gulf Coastal Plain, Atlantic Coastal Plain, Wichita Mountains, Great Plains, Cumberland Plateau, that might potentially have high divergence levels were unavailable to us or were represented by few specimens. Samples from these regions should be investigated further. Representative sequences for caddisfly species known from the GSMNP were selected from projects in the global TBoL campaign. Caddisfly species from the TBoL library were included based on the most recent park checklist (Parker et al. 2007), which was based on examination of >130,000 specimens and records. Representatives of each haplotype cluster showing >2% divergence from its nearest neighbors were selected to represent each taxon. Our goal was to reflect the COI sequence diversity present within each species across its distribution. If a particular COI haplotype cluster was represented by multiple

individuals, a single representative from each state or province was included in the analysis. Whenever available, full-length sequences derived from male specimens were selected.

Species identification via DNA barcoding

A significant fraction of the caddisflies collected in the 2007 bioblitz consisted of immature individuals or females, most of which presented a challenge for species-level identification. In such cases, DNA barcodes were used for species identification. We used a strict consensus criterion for these identifications—each specimen was identified only if its sequence nested within a sequence cluster delimited by positively identified specimens of that species (Zhou et al. 2007).

DNA protocols

All specimens were stored in 95% ethanol or pinned. Standard DNA-barcoding protocols (Ivanova et al. 2006, deWaard et al. 2008) were conducted at the Canadian Centre for DNA Barcoding, University of Guelph. In most cases, a single leg was removed from each individual and used for DNA extraction. A nondestructive extraction protocol was followed for some microcaddisflies (e.g., Hydroptilidae). In this protocol, the entire specimen was emerged in lysis buffer and was retained after extraction. The full-length barcode region of the COI gene was amplified with 2 sets of routine primers: LepF1 (5'-ATTCAACCAATCATAAAGATATTGG-3')/LepR1 (5'-TAAACTTCTGGATGTCCAAAAAATCA-3') (Hebert et al. 2004), and LCO1490 (5'-GGTCAACAAATCATAA GATATTGG-3')/HCO2198 (5'-TAAACTTCAGGGTGA CCAAAAAATCA-3') (Folmer et al. 1994). PCR products were visualized, cycle sequenced, purified, and bidirectionally sequenced on ABI 3730XL sequencers (Applied Biosystems, Foster City, California).

Data depository and output

All relevant voucher information, DNA sequences, and trace files are publicly accessible in projects *GSMNP caddisflies (SMCAD)* and *GSMNP caddisflies additional samples (SMTRI)*, in the Barcode of Life Data Systems (BOLD systems; <http://www.boldsystems.org>). All COI sequences have also been deposited in GenBank (accession numbers are in Appendix 1; available online from: <http://dx.doi.org/10.1899/10-010.1.s1>), except for 13 Churchill samples that were published in earlier papers (Zhou et al. 2009, 2010).

Sequence analysis and tree construction

Neighbor-Joining (NJ) trees were built for both GSMNP samples and combined samples using a

Kimura-2-Parameter (K2P) distance model, using tree-construction tools on BOLD. The Newick tree files were subsequently imported into the web-based visualization tool, interactive Tree of Life (iTOL; <http://itol.embl.de/>; Letunic and Bork 2007). The terminal nodes in the tree of samples from the GSMNP were collapsed for each morphological species, and the total branch lengths to the closest and the farthest terminal were used as sides of the triangle (Fig. 2). The combined NJ tree was presented in circular format. All terminal clades with average distance to terminals <2% were collapsed, but the overall tree topology was not changed (Fig. 3). Eleven monophyletic clades were recognized and pruned from the combined tree and presented as 9 subtrees (Figs 4–12). A NJ tree with detailed sample identification code (BOLD Sample ID), distribution, and sex information also was built with the BOLD tree construction function with K2P distances (Appendix 2; available online from: <http://dx.doi.org/10.1899/10-010.1.s2>). Intra- and interspecific distances were calculated in BOLD with the Nearest Neighbor Summary analytical tool and a K2P distance parameter for all sequences >350 base pairs (bp).

Results

DNA-barcode reference library

The GSMNP checklist was updated to ensure correspondence with current Trichoptera nomenclature (Morse 2010). Records from Parker et al. (2007) (with updates made by the authors of the present paper) and new records from our study were included in the updated checklist (Table 1). A total of 234 species, including 2 undescribed species by Parker et al. (2007) and 3 that have only provisional identifications, are now known from GSMNP. This total includes 2 species (*Homoplectra flinti* Weaver and *Hydroptila coweetensis* Huryn) that were collected for the first time in GSMNP during our bioblitz. COI sequences were available from the TBoL global library for 209 of these species (89%). Eighty species were collected during the bioblitz. Only 3 of these species were not already in the TBoL global library. Our coverage was 212 species (91% of the fauna), of which 208 (89%) were represented by barcode sequences >500 bp. Figure 1 shows the distribution of the 1638 caddisfly specimens examined in our study.

Barcode divergences in GSMNP Trichoptera

COI sequences were obtained from 645 of the caddisflies collected in the bioblitz. All 80 species in this collection exhibited reciprocal monophyly in the

NJ tree, and no species shared barcodes (Fig. 2). COI divergences within species were, on average, much lower than those between nearest neighbors (mean intraspecific distance = 0.7%, maximum intraspecific distance = 1.4%; Table 1). Eleven species showed maximum intraspecific divergence $>2\%$ (Fig. 2, highlighted by thickened branches), a threshold found useful in species discrimination in many insect groups (e.g., Hebert et al. 2003, 2004, Ball et al. 2005), whereas 3 species had mean intraspecific divergence $>2\%$. Exceptionally large intraspecific variation was observed in 2 species—individuals of *Dolophilodes distincta* (Walker) showed as much as 14.0% divergence and those of *Polycentropus cinereus* Hagen reached 9.9% divergence. Levels of within-species divergence were not correlated with the number of individuals analyzed for a species. In contrast to these cases of deep intraspecific variation, 1 species pair, *Agapetus walkeri* (Betten and Mosely) and *A. tomus* Ross, showed only 3.1% divergence, a result suggesting their recent speciation.

Barcode divergences in combined samples

Barcode coverage for the GSMNP fauna was extended by including 993 records from specimens collected at other localities to produce a data set with 1638 sequences (97% were >500 bp in length), representing 212 species (Fig. 1). The expansion of geographic range did not lead to a large increase in COI divergence for all species. For example, the maximum intraspecific divergence for *Hydropsyche sparna* Ross remained as low as 1.5% among samples collected as far as 2600 km apart. However, maximum intraspecific sequence divergences increased in many taxa, a result that reflected geographic variation. Between-species differences decreased because of greater taxon coverage, especially the addition of species that were closely related to those already in the data set. The barcode gap decreased, but intraspecific divergences were still much lower than interspecific divergences. Mean intraspecific distance was 1.7% (range: 0–10.2%), mean maximum intraspecific distance was 3.1% (range: 0–10.6%), and average distance to the nearest neighbor was 10.1% (range: 0–23.4%). The rise in intraspecific variation reflected the fact that some species showed very high divergence across their distribution. Half of the species represented by multiple individuals showed maximum intraspecific divergence $\geq 2\%$ (Figs 4–12, Table 1), whereas 34% had a mean intraspecific divergence $\geq 2\%$. However, most of the overall rise in intraspecific variation arose from a few species with deep maximum within-species divergence. For instance,

$\sim 11\%$ of the species showed $\geq 8\%$ maximum within-species divergences (Table 1, highlighted in grey blocks with a solid line in Figs 4–7, 9–10, 12). The 8% value was not selected to imply a generic barcode gap for the caddisflies examined in our study nor to suggest that taxa with $<8\%$ divergences should not be investigated. This arbitrary divergence was used simply to point out where large intraspecific divergences were observed in the focal taxa. Most of these taxa have not been thoroughly investigated via integrated morphological and molecular evidence, some are almost certainly species complexes, and others include multiple lineages with clear morphological differences. Despite cases of large sequence variation within species, most species (91%) defined by morphology were represented by a monophyletic assemblage of haplotypes (Figs 4–12).

The exceptions are highlighted with transparent (Category 1 in Appendix 3; available online from: <http://dx.doi.org/10.1899/10-010.1.s3>) or grey (Category 2 in Appendix 3) blocks with a dotted line, representing instances where the barcode data could not definitively identify species or where barcode data could identify species, but species were not monophyletic, respectively. In Category 1, 14 species belonging to 6 species complexes either shared barcodes or formed clusters with representatives from ≥ 1 taxon (Figs 5, 6, 9–11, highlighted by transparent blocks with a dotted line). These cases included 5 pairs of species—*Polycentropus coleii* Ross/*Polycentropus rickeri* Yamamoto (Fig. 5), *Ceraclaea nepha* (Ross)/*Ceraclaea tarsipunctata* (Vorhies) (Fig. 9), *Trianenodes tardus* Milne/*Trianenodes marginatus* Sibley (Fig. 9), *Psilotreta rossi* Wallace/*Psilotreta rufa* (Hagen) (Fig. 10), and *Lepidostoma pictile* (Banks)/*Lepidostoma modestum* (Banks) (Fig. 11). In addition, they included 1 group of 4 species—*Cheumatopsyche campyla* Ross/*Cheumatopsyche speciosa* (Banks)/*Cheumatopsyche pasella* Ross/*Cheumatopsyche ela* Denning (Fig. 6). In Category 2, 6 species each had multiple haplotype groups deeply diverging from each other and a closely related species nested within its species boundary but not overlapping with any of its haplotype groups: *Nyctiophylax affinis* (Banks), *Diplelectrona modesta* Banks, *Hydropsyche rossi* Flint, Voshell, and Parker, *Ceraclaea flava* (Banks), *Oecetis inconspicua* (Walker), and *Psilotreta labida* Ross. The potential reasons for these unusual barcode clustering patterns are briefly addressed in the discussion. Taxonomic changes have not been proposed in our paper because comprehensive taxonomic revision is not available. However, provisional opinions on the relevant issues are provided in Appendix 3.

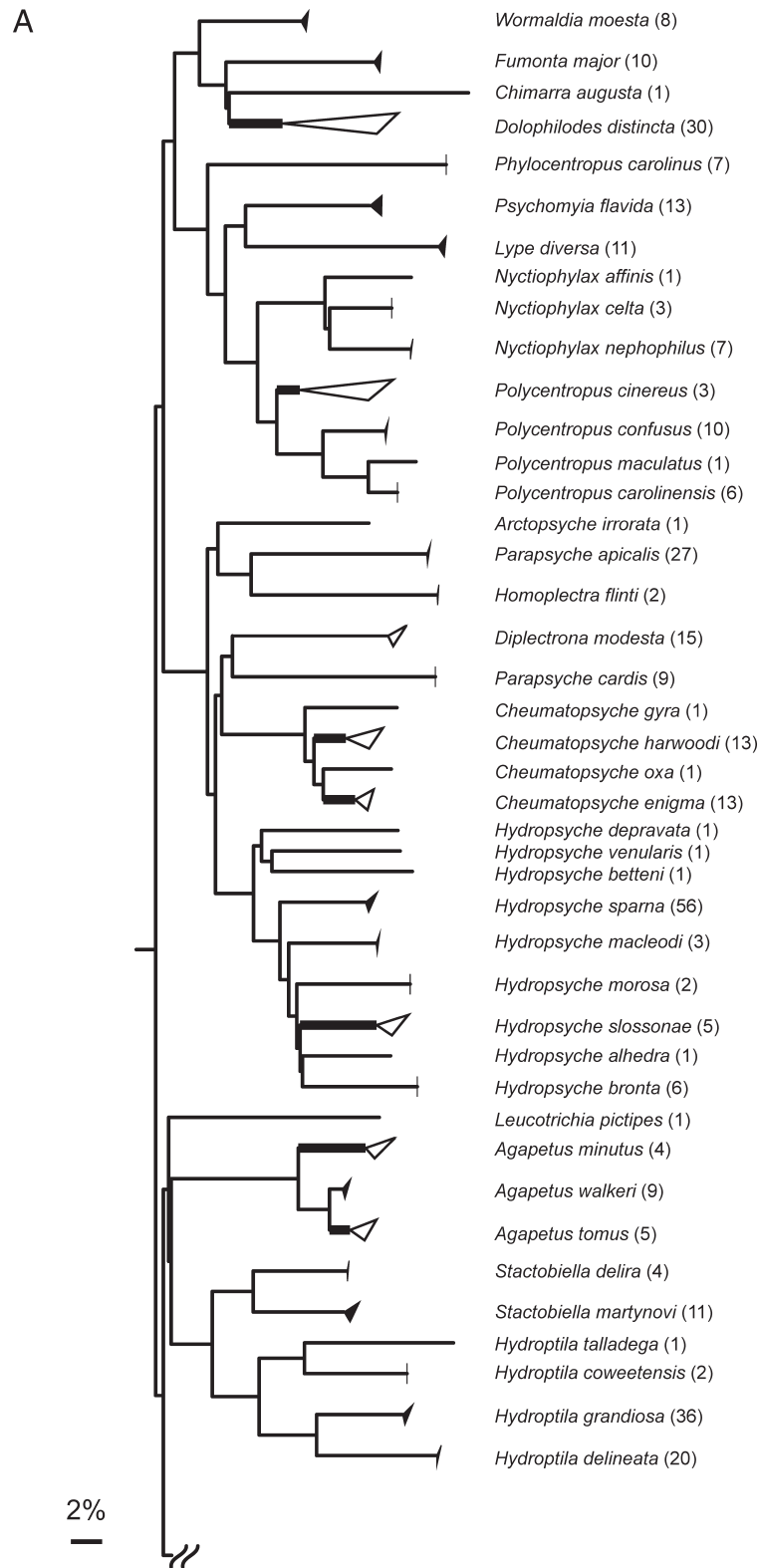


FIG. 2. A and B.—Neighbor-Joining tree of 80 Trichoptera species collected in the Great Smoky Mountains National Park during the 2007 bioblitz. Tree nodes are collapsed for each morphological species, where the total branch lengths to the closest and the farthest terminal are used as sides of the triangle. Species possessing $\geq 2\%$ maximum intraspecific divergence are highlighted by thickened branches. Numbers in brackets next to species names represent number of individuals analyzed for the corresponding species.

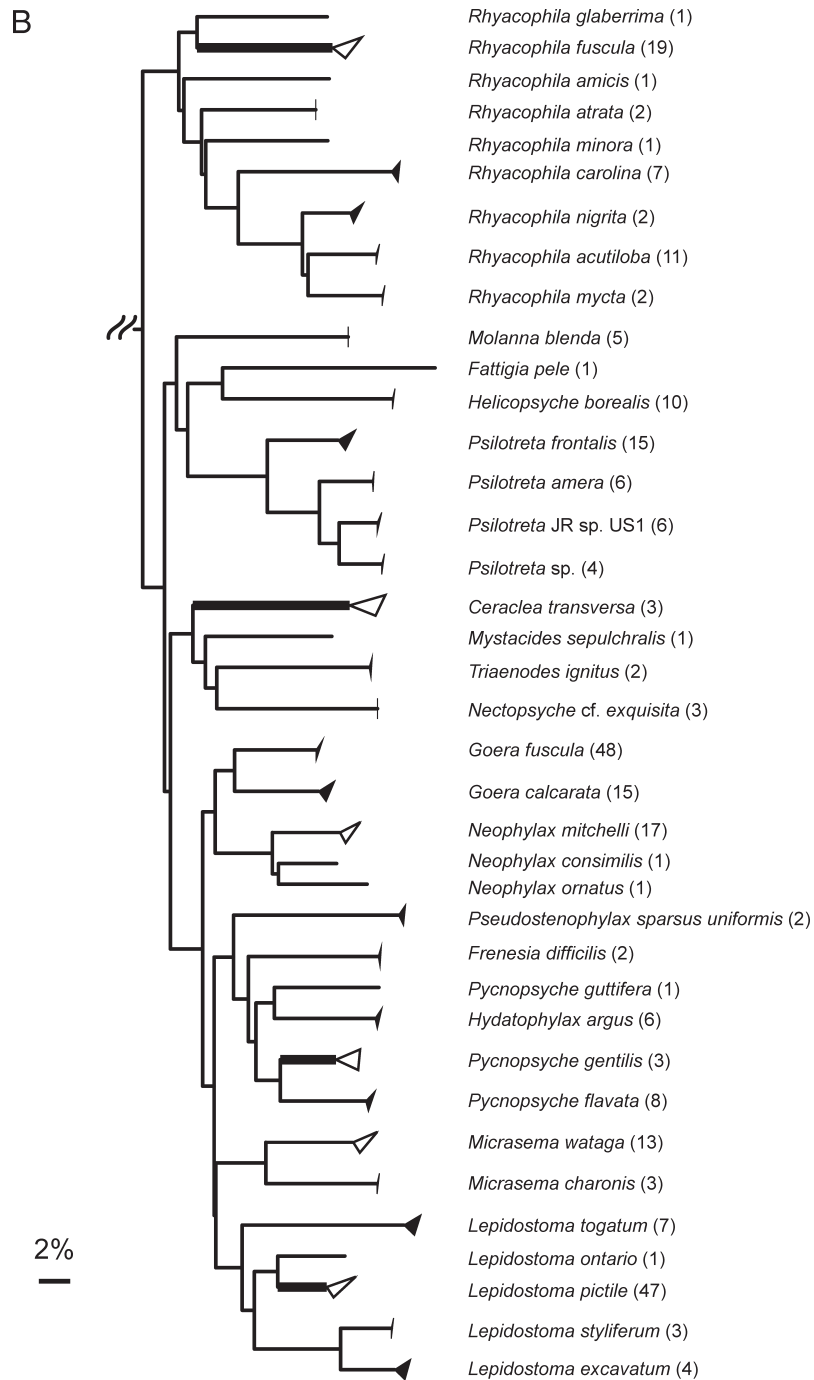


FIG. 2. Continued.

Discussion

This study validated the effectiveness of DNA barcoding as a tool for identifying Trichoptera species found in the GSMNP. When analysis was restricted to specimens collected in the Park, DNA-barcode results

showed perfect congruence with morphological assignments, a result that also was obtained in an investigation of subarctic caddisflies (Zhou et al. 2009, 2010). We also sought to establish a protocol for expedited construction of the barcode reference library needed to aid identifications of this local

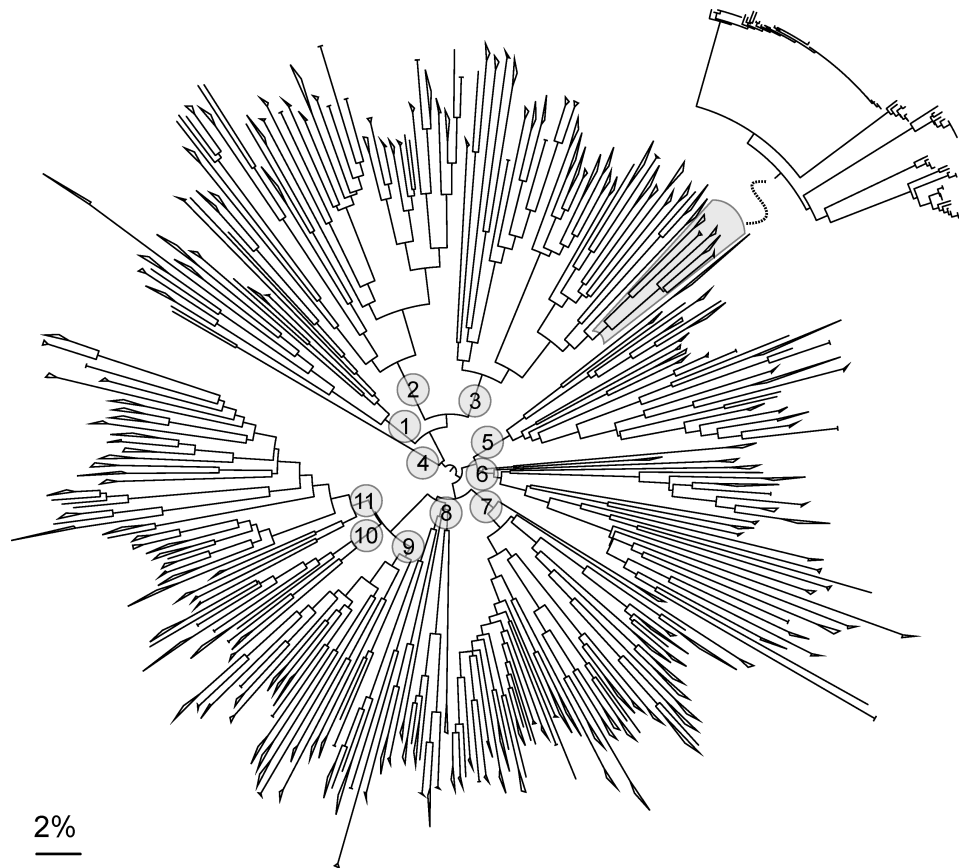


FIG. 3. Neighbor-Joining tree of combined Trichoptera data set including 212 species. All terminal clades with average distance $<2\%$ are collapsed, but the overall tree topology is not changed. Each collapsed clade may contain many individuals, as shown in the inset figure. Eleven monophyletic groups (numbered 1–11 in this figure) are presented in subsequent figures (Figs 4–12).

fauna. A 3-d collecting effort in the GSMNP provided barcode records for 80 species (34% of the fauna), including 3 with no prior barcode data. However, coverage for an additional 57% of the GSMNP species was gained from records obtained through ongoing effort to build a comprehensive barcode reference library for North American Trichoptera. The inclusion of such records enabled rapid progress towards a comprehensive library, but the addition of samples from multiple localities did lead to a substantial increase in the levels of sequence variation within species. Only 5% of the taxa collected in the GSMNP showed $>2\%$ mean intraspecific divergence, but 34% of the species in the composite data set exceeded this threshold. Despite this large sequence variation, 91% of the species were represented by a monophyletic cluster of sequences. As a consequence, query sequences still were usually assigned to the proper species via a rigorous tree-based method. Barcoding can assign queries to the correct species, even those

exhibiting paraphyly in COI, if nested lineage diversity is present (Kizirian and Donnelly 2004). For instance, if a query sample belongs to any of the paraphyletic haplogroups within *Diplectrona modesta* Banks (Fig. 6), the sample is identified to that species. Moreover, in cases where observed haplotype groups represent distinctive species yet to be described, the barcode reference library can be updated as soon as taxonomic revisions are completed for a species complex, as can be all identifications made based on sequence records.

Overall, DNA barcoding distinguished 93% of the caddisfly species in our study, which is by far the most rigorous test to date for the effectiveness of barcoding in caddisflies because it involves a wide range of taxa represented by multiple individuals from a large geographic range. Among the 77 species with coverage from within and outside the Park, 51 had all haplotypes detected in GSMNP samples nested within species boundaries delimited by out-

side samples, and 87% of the GSMNP individuals were placed within these boundaries (samples collected in the bioblitz were highlighted in red in Appendix 2). This observation suggests that sequence records within the global TBoL reference library can be used effectively to aid comprehensive barcode coverage for much of eastern North America. Of course, care in interpretation is critical when a query sequence falls outside the species boundary delimited by existing records because many eastern caddisfly species, including some known from the GSMNP, are currently absent from the overall library. As indicated by our study, local biotic surveys can make an important contribution to the overall DNA-barcode library by providing coverage for rare or endemic species (for hotspots of caddisfly endemism, see de Moor and Ivanov 2008) and by contributing high-quality barcode sequences through the analysis of fresh material.

Most of the Trichoptera species known from the GSMNP (91%) are now included in the DNA-barcode reference library, so immediate opportunities exist for its application. The most important of these applications lies in the capability to identify caddisflies at any life stage. This ability will facilitate studies on life history, phenology, food and habitat preferences, and larval behaviors. In addition, molecular analyses, including high-throughput sequencing technologies, can be applied to community-level biodiversity surveys and for foodweb study via diet analyses (King et al. 2008, Rokas and Abbot 2009, Valentini et al. 2009a, b). Such studies will certainly advance our understanding of ecosystem functions and enhance ecosystem management.

Complexities when using DNA barcoding

Our study has further validated the effectiveness of DNA barcoding for the identification of Trichoptera within the GSMNP, but it has revealed some complexities. These complexities fell into 3 categories: 1) barcode data could not be used to distinguish some closely related species; 2) barcode data could be used to identify species, but species were not monophyletic; 3) barcode sequences recovered monophyletic taxa, but the genetic distances were very high. A comprehensive taxonomic revision is beyond the scope of our paper, but provisional opinions and observations made during the course of our study are provided in Appendix 3. Here, we discuss the implications of the present results in relation to past concerns expressed regarding the effectiveness of DNA barcoding.

Category 1: barcodes could not be used to distinguish some closely related species.—Fourteen species belonging to 6 species complexes could not be distinguished by DNA barcodes. Members of 3 of these species complexes (*Ceraclea nepha* (Ross)/*C. tarsipunctata* (Vorhies), *Triaenodes tardus* Milne/*T. marginatus* Sibley, and *Psilotreta rossi* Wallace/*P. rufa* (Hagen)) each possess distinctive morphological characters that allow their unambiguous identification. Members of the 3 remaining species complexes have very subtle diagnostic characters, and individuals with intermediate morphology are sometimes observed. For example, members of the *Cheumatopsyche campyla* complex are notoriously difficult to distinguish reliably using morphology. A revision to Nearctic *Cheumatopsyche* (Gordon 1974) is widely followed by taxonomists, but males with an admixture of diagnostic characters are common and identification of both sexes remains difficult. A single individual is often assigned to different species if examined by more than 1 taxonomist because of the lack of consistent diagnostic characters. Indeed, such is the case for a number of specimens in the barcode tree (taxonomic comments can be found in the corresponding specimen records in BOLD projects). However, none of these conflicting identifications corresponded strictly to the barcode haplotype groups (Fig. 6). The *C. campyla* complex might have undergone recent speciation with incomplete lineage sorting that is reflected in both morphology and COI sequences, possibly accompanied by hybridization. In several cases, the taxa in question are represented only by limited samples collected in just a few localities. Thus, revisional work is impossible at this time.

Category 2: barcodes could be used to distinguish taxa even when species showed parapatry.—The 6 species in this category can be distinguished readily by barcodes, and evidence is increasing that taxa in this category may each include multiple cryptic species. For instance, among the most sampled taxa, *Diplec-trona metaqui* Ross resides deeply inside *D. modesta* (Fig. 6). The long speculation that multiple species are included within *D. modesta* has now gained support from studies of larval morphology and barcode data (JLR, CJG, OSF, L. Harvey, Clemson University, J. C. Morse, Clemson University, and XZ, unpublished data). *Diplec-trona modesta* is undoubtedly a complex of several species with nearly indistinguishable adults but often diagnosable larvae. Similarly, the *Oecetis inconspicua* complex contains at least 21 divergent COI clusters with *O. nocturna* Ross nested within the defined species boundary (Fig. 9). The probable presence of multiple species within *O. inconspicua* is

TABLE 1. Trichoptera of Great Smoky Mountains National Park (GSMNP) and barcode distances. Divergence values were calculated for all sequences >350 base pairs, using the Nearest Neighbor Summary tool provided in the Barcode of Life Data System (BOLD). Global library = Trichoptera Barcode of Life database, bioblitz = short-term, high-intensity sampling event, N = number of sequences in the database, NN = nearest neighbor, ISD = intraspecific distance, ID = identifier, N/A = not applicable. AB = Alberta, AL = Alabama, AR = Arkansas, AZ = Arizona, CO = Colorado, FL = Florida, GA = Georgia, IA = Iowa, IL = Illinois, IN = Indiana, KY = Kentucky, LA = Louisiana, MA = Massachusetts, MB = Manitoba, MD = Maryland, ME = Maine, MI = Michigan, MN = Minnesota, MT = Montana, NB = New Brunswick, NC = North Carolina, NJ = New Jersey, NL = Newfoundland and Labrador, NS = Nova Scotia, NV = Nevada, NY = New York, OH = Ohio, OK = Oklahoma, ON = Ontario, OR = Oregon, PA = Pennsylvania, PE = Prince Edward Island, QC = Quebec City, SC = South Carolina, SD = South Dakota, SK = Saskatchewan, TN = Tennessee, TX = Texas, VA = Virginia, WI = Wisconsin, WV = West Virginia, WY = Wyoming, VT = Vermont, ME = Maine, WA = Washington.

| Species | Distribution from global library | GSMNP Bioblitz | | | Global library | | | | |
|--|----------------------------------|----------------|----------|---------|----------------|---------|------------------------------------|-------------|------|
| | | N | Mean ISD | Max ISD | N | Max ISD | Nearest species | | |
| Apataniidae | | | | | | | | | |
| <i>Apatania incerta</i> (Banks) ^a | NY, NC | 0 | - | - | 5 | 4.8 | <i>Pycnopsyche flavata</i> | SMCAD429-07 | 16.2 |
| Beraeidae | | | | | | | | | |
| <i>Beraea nigriflora</i> Banks ^b | | 0 | - | - | 0 | - | - | - | - |
| Brachycentridae | | | | | | | | | |
| <i>Brachycentrus appalachia</i> Flint | NY | 0 | - | - | 2 | 0.2 | <i>Brachycentrus spiniae</i> | OFCAD079-08 | 2.0 |
| <i>Brachycentrus lateralis</i> (Say) | TN, VA | 0 | - | - | 2 | 0.0 | <i>Brachycentrus spiniae</i> | OFCAD079-08 | 5.7 |
| <i>Brachycentrus nigrosoma</i> (Banks) | VA, MD, TN | 0 | - | - | 3 | 0.8 | <i>Brachycentrus spiniae</i> | OFCAD079-08 | 11.7 |
| <i>Brachycentrus spiniae</i> Ross | TN, NC | 0 | - | - | 2 | 0.6 | <i>Brachycentrus appalachia</i> | DRCAD312-09 | 2.0 |
| <i>Micrasema bennetti</i> Ross | VA | 0 | - | - | 1 | N/A | <i>Micrasema rusticum</i> | OFCAD102-08 | 9.3 |
| <i>Micrasema burksi</i> Ross and Unzicker | NC | 0 | - | - | 2 | 0.0 | <i>Micrasema rickeri</i> | SMTRI011-10 | 10.1 |
| <i>Micrasema charonis</i> Banks | VA, NC | 3 | 0.1 | 0.2 | 9 | 2.8 | <i>Micrasema rusticum</i> | OFCAD102-08 | 9.5 |
| <i>Micrasema rickeri</i> Ross and Unzicker | NC | 0 | - | - | 1 | N/A | <i>Micrasema burksi</i> | PKCAD028-07 | 10.1 |
| <i>Micrasema rusticum</i> (Hagen) | ON, VA, NB, KY | 0 | - | - | 4 | 0.0 | <i>Micrasema scotti</i> | PKCAD277-07 | 8.2 |
| <i>Micrasema scotti</i> Ross | VA, TN, GA | 0 | - | - | 3 | 3.5 | <i>Micrasema rusticum</i> | PKCAD220-07 | 8.2 |
| <i>Micrasema wataga</i> Ross | SC, NY, ON, VA, FL, MN, TN | 13 | 0.7 | 2.0 | 21 | 4.3 | <i>Micrasema burksi</i> | PKCAD028-07 | 12.3 |
| Calamoceratidae | | | | | | | | | |
| <i>Anisocentropus pyrataloides</i> (Walker) | SC, KY, TN, AL, FL | 0 | - | - | 6 | 1.7 | <i>Heteroplectron americanum</i> | UMNEB015-08 | 14.7 |
| <i>Heteroplectron americanum</i> (Walker) | NC, VA, SC, TN | 0 | - | - | 4 | 2.2 | <i>Anisocentropus pyrataloides</i> | PKCAD790-08 | 14.7 |
| Dipseudopsidae | | | | | | | | | |
| <i>Phyllocentropus auriceps</i> (Banks) | VA | 0 | - | - | 1 | N/A | <i>Phyllocentropus carolinus</i> | PKCAD578-07 | 20.4 |
| <i>Phyllocentropus carolinus</i> Carpenter | VA, SC, TN | 7 | 0.0 | 0.0 | 10 | 5.5 | <i>Phyllocentropus lucidus</i> | NBCAD385-08 | 18.8 |
| <i>Phyllocentropus lucidus</i> (Hagen) | NB, NY, VA | 0 | - | - | 4 | 1.7 | <i>Phyllocentropus carolinus</i> | SMCAD182-07 | 18.8 |
| Glossosomatidae | | | | | | | | | |
| <i>Agapetus crasimus</i> Ross | TN | 0 | - | - | 1 | N/A | <i>Agapetus hessi</i> | OFCAD045-08 | 10.2 |
| <i>Agapetus hessi</i> Leonard and Leonard | VA | 0 | - | - | 2 | 0.0 | <i>Agapetus walkeri</i> | SMCAD006-07 | 5.6 |

TABLE 1. Continued.

| Species | Distribution for barcodes from global library | GSMNP Bioblitz | | | Global library | | | Distance to NN |
|--|--|----------------|----------|---------|----------------|---------|-------------------|----------------|
| | | N | Mean ISD | Max ISD | N | Max ISD | NN BOLD ProcessID | |
| <i>Agapetus iridis</i> Ross | NC, NB | 0 | - | - | 2 | 3.1 | SMTR1032-10 | 5.1 |
| <i>Agapetus jocassee</i> Morse | NC | 0 | - | - | 2 | 1.6 | NBTR1330-08 | 5.1 |
| <i>Agapetus minutus</i> Sibley | KY | 4 | 1.8 | 3.2 | 5 | 3.2 | SMCAD700-07 | 7.6 |
| <i>Agapetus pinatus</i> Ross | NB | 0 | - | - | 2 | 0.3 | SMTR1032-10 | 6.1 |
| <i>Agapetus tomus</i> Ross | VA, NJ | 5 | 1.7 | 2.6 | 7 | 2.6 | OFCAD056-08 | 2.8 |
| <i>Agapetus walkeri</i> (Betten and Mosely) ^c | TN, NS, VA | 9 | 0.5 | 1.1 | 13 | 1.5 | SMCAD154-07 | 2.8 |
| <i>Glossosoma nigrilor</i> Banks | NB, MN, NY, TN, VA | 0 | - | - | 5 | 1.9 | SMCAD689-07 | 20.0 |
| <i>Matrioptila jeanae</i> (Ross) | TN, GA | 0 | - | - | 2 | 2.3 | SMCAD700-07 | 20.4 |
| Goeridae | | | | | | | | |
| <i>Goera calcarata</i> Banks | NJ, NB, VA, SC, NC, TN | 15 | 0.7 | 1.7 | 21 | 1.7 | SMCAD365-07 | 11.2 |
| <i>Goera fuscula</i> Banks | NB, VA, NJ, TN | 48 | 0.1 | 0.6 | 52 | 1.2 | SMTR1013-10 | 0.5 |
| <i>Goera cf. fuscula</i> Banks | NC | 0 | - | - | 1 | N/A | SMCAD617-07 | 0.5 |
| <i>Goerita betteni</i> Ross | KY | 0 | - | - | 2 | 0.5 | CNCAD479-07 | 12.1 |
| <i>Goerita flinti</i> Parker | NC, MT | 0 | - | - | 0 | - | - | - |
| <i>Goerita senata</i> Ross | NC, MT | 0 | - | - | 3 | 0.3 | PKCAD830-08 | 12.1 |
| Helicopsychidae | | | | | | | | |
| <i>Helicopsyche borealis</i> (Hagen) | TN, KY, NY, ON, GA, NB, SC, NY, VA, FL, MN, SK, AZ, OR, MB, NS | 10 | 0.0 | 0.2 | 30 | 10.7 | PKCAD004-07 | 17.9 |
| Hydropsychidae | | | | | | | | |
| <i>Arctopsyche irrorata</i> Banks | NC, TN | 1 | N/A | N/A | 4 | 0.5 | PKCAD373-07 | 20.8 |
| <i>Cheumatopsyche analis</i> (Banks) | IL, WY, MN, ON, NJ, NS, FL, SC | 0 | - | - | 8 | 3.8 | OFCAD600-08 | 4.4 |
| <i>Cheumatopsyche campyla</i> Ross | ON, MN, MB, IN | 0 | - | - | 6 | 4.3 | ONCAD169-08 | 0.0 |
| <i>Cheumatopsyche ela</i> Denning ^d | VA, ON | 0 | - | - | 4 | 5.1 | UMNEA361-08 | 0.0 |
| <i>Cheumatopsyche enigma</i> Ross, Morse, and Gordon | NB | 13 | 1.2 | 2.3 | 14 | 2.3 | NBCAD036-08 | 6.1 |
| <i>Cheumatopsyche geora</i> Denning | NC | 0 | - | - | 0 | - | - | - |
| <i>Cheumatopsyche gyra</i> Ross | NC | 1 | N/A | N/A | 3 | 1.1 | NBCAD105-08 | 2.0 |
| <i>Cheumatopsyche halima</i> Denning | NB | 0 | - | - | 2 | 2.2 | SMTR1006-10 | 2.0 |
| <i>Cheumatopsyche harwoodi</i> Denning | MB, NB, AB, ON | 13 | 1.6 | 4.6 | 17 | 4.8 | SMCAD160-07 | 6.2 |
| <i>Cheumatopsyche helma</i> Ross | NC | 0 | - | - | 0 | - | - | - |
| <i>Cheumatopsyche oxia</i> Ross | MN, NY, NB, IL, MO | 1 | N/A | N/A | 6 | 2.2 | SMCAD161-07 | 6.1 |
| <i>Cheumatopsyche pasella</i> Ross | AR, FL, VA | 0 | - | - | 4 | 3.5 | MBCAD459-09 | 0.8 |
| <i>Cheumatopsyche speciosa</i> (Banks) | MB, MN | 0 | - | - | 2 | 0.8 | RMCAD238-08 | 0.8 |
| <i>Diplectrona metaqui</i> Ross | SC, WV, NC, IN, KY, AL, TN | 0 | - | - | 9 | 4.3 | PKCAD729-08 | 7.8 |

TABLE 1. Continued.

| Species | Distribution for barcodes from global library | GSMNP Bioblitz | | | Global library | | | Distance to NN |
|---|--|----------------|----------|---------|----------------|---------|---------------------------------|----------------|
| | | N | Mean ISD | Max ISD | N | Max ISD | Nearest species | |
| <i>Diplectrona modesta</i> Banks | TN, KY, VA, NC, SC, IL, OH, WV, AL, MD, QC, ON, IN, PA | 15 | 0.6 | 2.0 | 39 | 14.0 | <i>Diplectrona metaqui</i> | 7.8 |
| <i>Homoplectra doringa</i> (Milne) | NC, WV, TN, AL | 0 | – | – | 4 | 1.9 | <i>Homoplectra flinti</i> | 15.5 |
| <i>Homoplectra flinti</i> Weaver | NC | 2 | 0.2 | 0.2 | 3 | 0.3 | <i>Homoplectra doringa</i> | 15.5 |
| <i>Hydropsyche alhedra</i> Ross | VA, ON, AB, MB, WI, MN | 1 | N/A | N/A | 7 | 1.3 | <i>Hydropsyche sparna</i> | 10.2 |
| <i>Hydropsyche betteni</i> Ross | AK, NC, ON, IL, NB, SC, MN, NS | 1 | N/A | N/A | 9 | 5.3 | <i>Hydropsyche macleodi</i> | 14.3 |
| <i>Hydropsyche bronata</i> Ross | NB, ON, MB, MN | 6 | 0.0 | 0.0 | 10 | 3.6 | <i>Hydropsyche slossonae</i> | 11.6 |
| <i>Hydropsyche carolina</i> Banks | VA | 0 | – | – | 0 | – | – | – |
| <i>Hydropsyche cheilonis</i> Ross | VA, TN | 1 | N/A | N/A | 1 | N/A | <i>Hydropsyche morosa</i> | 10.6 |
| <i>Hydropsyche depravata</i> Hagen | NY | 0 | – | – | 3 | 1.6 | <i>Hydropsyche betteni</i> | 14.8 |
| <i>Hydropsyche franclemonti</i> Flint | NC | 3 | 0.2 | 0.3 | 5 | 1.6 | <i>Hydropsyche scalaris</i> | 9.1 |
| <i>Hydropsyche macleodi</i> Flint | NB, ON, IA, MN, VA, NJ | 2 | 0.0 | 0.0 | 12 | 10.7 | <i>Hydropsyche slossonae</i> | 10.4 |
| <i>Hydropsyche morosa</i> Hagen | ON, LA, FL, NC, IL | 0 | – | – | 5 | 7.0 | <i>Hydropsyche simulans</i> | 10.6 |
| <i>Hydropsyche rossi</i> Flint, Voshell, and Parker | ON, VA, WV, SC, MN, QC | 0 | – | – | 6 | 1.7 | <i>Hydropsyche franclemonti</i> | 5.8 |
| <i>Hydropsyche scalaris</i> Hagen | TX, TN, MN, MI, AR | 0 | – | – | 5 | 1.9 | <i>Hydropsyche rossi</i> | 9.1 |
| <i>Hydropsyche simulans</i> Ross | MB, AB, TN, VA, SC, SD, MN, NS, MI | 5 | 1.9 | 3.5 | 19 | 4.5 | <i>Hydropsyche macleodi</i> | 5.8 |
| <i>Hydropsyche slossonae</i> Banks | FL, NB, ON, TN, NY, VA, VT, NJ, NL, NS, MI | 56 | 0.2 | 1.1 | 67 | 1.5 | <i>Hydropsyche macleodi</i> | 10.4 |
| <i>Hydropsyche sparna</i> Ross | TN, VA, NC | 1 | N/A | N/A | 4 | 2.5 | <i>Hydropsyche scalaris</i> | 10.2 |
| <i>Hydropsyche venularis</i> Banks | ON, QC, VA, NC | 27 | 0.0 | 0.3 | 31 | 1.1 | <i>Hydropsyche modesta</i> | 13.3 |
| <i>Parapsyche apicalis</i> (Banks) | VA, NC | 9 | 0.0 | 0.0 | 13 | 8.6 | <i>Arctopsyche irrorata</i> | 22.1 |
| <i>Parapsyche cardis</i> Ross | NB | 0 | – | – | 2 | 0.5 | <i>Stactobiella delira</i> | 21.4 |
| Hydroptilidae | | | | | | | | |
| <i>Dibusa argata</i> Ross | ON, MN, IL | 0 | – | – | 0 | – | – | 19.5 |
| <i>Hydroptila amoena</i> Ross | NC, NS | 0 | – | – | 3 | 0.6 | <i>Hydroptila waubesiana</i> | – |
| <i>Hydroptila armata</i> Ross | ON, MN, IL | 0 | – | – | 3 | 0.8 | <i>Hydroptila hamata</i> | 19.4 |
| <i>Hydroptila callia</i> Denning | ON, MN, IL | 0 | – | – | 0 | – | – | 17.8 |
| <i>Hydroptila chattanooga</i> Frazer and Harris | IL | 0 | – | – | 0 | – | – | – |
| <i>Hydroptila coveetensis</i> Huryn | ON, IL | 2 | 0.0 | 0.0 | 2 | 0.0 | <i>Hydroptila talladega</i> | 16.1 |
| <i>Hydroptila delineata</i> Morton | ON, IL | 20 | 0.1 | 0.4 | 20 | 0.4 | <i>Hydroptila grandiosa</i> | 12.5 |
| <i>Hydroptila fiskel</i> Blicke | IL | 0 | – | – | 0 | – | – | – |
| <i>Hydroptila grandiosa</i> Ross | ON, IL | 36 | 0.2 | 0.8 | 38 | 1.0 | <i>Hydroptila delineata</i> | 12.5 |
| <i>Hydroptila hamata</i> Morton | ON, IL | 0 | – | – | 2 | 0.0 | <i>Hydroptila callia</i> | 17.8 |

TABLE 1. Continued.

| Species | GSMNP Bioblitz | | | | Global library | | | | |
|---|---|----|----------|---------|----------------|---------|--------------------------------|-------------------|----------------|
| | Distribution for barcodes from global library | N | Mean ISD | Max ISD | N | Max ISD | Nearest species | NN BOLD ProcessID | Distance to NN |
| <i>Hydroptila oneili</i> Harris | NC | 0 | - | - | 0 | - | - | - | - |
| <i>Hydroptila remita</i> Blickle and Morse | NC | 0 | - | - | 2 | 0.5 | <i>Hydroptila waubesiana</i> | BBUSA810-09 | 17.8 |
| <i>Hydroptila scolops</i> Ross | NC | 0 | - | - | 0 | - | - | - | - |
| <i>Hydroptila talladega</i> Harris | NC | 1 | N/A | N/A | 3 | 2.2 | <i>Hydroptila coveatensis</i> | SMCAD339-07 | 16.1 |
| <i>Hydroptila vahlhalla</i> Denning | MN | 0 | - | - | 1 | N/A | <i>Hydroptila grandiosa</i> | SMCAD082-07 | 17.9 |
| <i>Hydroptila waubesiana</i> Betten | AR, ON, MN, QC, IL | 0 | - | - | 5 | 1.0 | <i>Hydroptila grandiosa</i> | SMCAD082-07 | 16.4 |
| <i>Leucotrichia pictipes</i> (Banks) | NV | 1 | N/A | N/A | 2 | 6.9 | <i>Diplectrona modesta</i> | PKCAD373-07 | 23.4 |
| <i>Mayatrachia ayama</i> Mosely | MN | 0 | - | - | 2 | 0.7 | <i>Oecetis avara</i> | UMNEA169-08 | 20.0 |
| <i>Ochrotrichia graysoni</i> Parker and Voshell | | 0 | - | - | 0 | - | - | - | - |
| <i>Oxyethira michiganensis</i> Mosely | NB, MN | 0 | - | - | 2 | 0.3 | <i>Oxyethira pallida</i> | LPOK676-09 | 21.0 |
| <i>Oxyethira novasota</i> Ross ^e | NC | 0 | - | - | 1 | N/A | N/A | N/A | N/A |
| <i>Oxyethira pallida</i> (Banks) | OK | 0 | - | - | 2 | 0.3 | <i>Oxyethira michiganensis</i> | UMNEC171-08 | 21.0 |
| <i>Stactobiella delira</i> (Ross) | NB | 4 | 0.1 | 0.2 | 5 | 0.3 | <i>Stactobiella martynovi</i> | SMCAD727-07 | 12.1 |
| <i>Stactobiella martynovi</i> Blickle and Denning | NC | 11 | 0.6 | 1.5 | 12 | 1.6 | <i>Stactobiella delira</i> | SMCAD536-07 | 12.1 |
| <i>Stactobiella palmata</i> (Ross) | | 0 | - | - | 0 | - | - | - | - |
| Lepidostomatidae^f | | | | | | | | | |
| <i>Lepidostoma americanum</i> (Banks) | VA | 0 | - | - | 2 | 0.0 | <i>Lepidostoma bryanti</i> | UMNEB819-08 | 8.7 |
| <i>Lepidostoma bryanti</i> (Banks) | MB, NB, MN | 0 | - | - | 4 | 2.0 | <i>Lepidostoma americanum</i> | PKCAD439-07 | 8.7 |
| <i>Lepidostoma carrolli</i> Flint | VA | 0 | - | - | 2 | 0.0 | <i>Lepidostoma griseum</i> | OFCAD234-08 | 6.2 |
| <i>Lepidostoma excavatum</i> Flint and Wiggins | NC, VA | 4 | 0.9 | 1.7 | 6 | 2.8 | <i>Lepidostoma styliferum</i> | SMCAD492-07 | 6.6 |
| <i>Lepidostoma flinti</i> Wallace and Sherberger | | 0 | - | - | 0 | - | - | - | - |
| <i>Lepidostoma frosti</i> (Milne) | NC | 0 | - | - | 2 | 0.6 | <i>Lepidostoma lydia</i> | DRCAD337-09 | 11.4 |
| <i>Lepidostoma griseum</i> (Banks) | VA, QC, WV | 0 | - | - | 3 | 1.3 | <i>Lepidostoma carrolli</i> | OFCAD222-08 | 6.2 |
| <i>Lepidostoma latiperme</i> (Banks) | SC | 0 | - | - | 2 | 0.2 | <i>Lepidostoma bryanti</i> | MBCAD325-08 | 16.7 |
| <i>Lepidostoma lobatum</i> Wallace and Sherberger | | 0 | - | - | 0 | - | - | - | - |
| <i>Lepidostoma lydia</i> Ross | VA, NC, NS, NY | 0 | - | - | 6 | 2.8 | <i>Lepidostoma ontario</i> | SMCAD446-07 | 6.8 |
| <i>Lepidostoma mitchelli</i> Flint and Wiggins | | 0 | - | - | 0 | - | - | - | - |
| <i>Lepidostoma modestum</i> (Banks) | NC, VA | 0 | - | - | 4 | 0.5 | <i>Lepidostoma pictile</i> | SMCAD663-07 | 0.0 |
| <i>Lepidostoma ontario</i> Ross | VA, NB, NY | 1 | N/A | N/A | 4 | 1.9 | <i>Lepidostoma lydia</i> | OFCAD246-08 | 6.8 |
| <i>Lepidostoma pictile</i> (Banks) | NJ, NB | 47 | 0.5 | 2.2 | 49 | 2.4 | <i>Lepidostoma modestum</i> | OFCAD256-08 | 0.0 |
| <i>Lepidostoma sackeni</i> (Banks) | MA, ON | 0 | - | - | 2 | 0.8 | <i>Lepidostoma carrolli</i> | OFCAD222-08 | 10.4 |
| <i>Lepidostoma styliferum</i> Flint and Wiggins | TN | 3 | 0.1 | 0.2 | 4 | 0.2 | <i>Lepidostoma excavatum</i> | PKCAD815-08 | 6.6 |
| <i>Lepidostoma tibiale</i> (Carpenter) | VA | 0 | - | - | 2 | 2.3 | <i>Lepidostoma togatum</i> | UMNEB750-08 | 12.1 |

TABLE 1. Continued.

| Species | Distribution for barcodes from global library | GSMNP Bioblitz | | | Global library | | | Distance to NN | |
|--|--|----------------|----------|---------|-----------------|-------------------|-------------------------------|----------------|------|
| | | N | Mean ISD | Max ISD | Nearest species | NN BOLD ProcessID | | | |
| <i>Lepidostoma togatum</i> (Hagen) | MB, NB, MN, GA, AL, NJ, ON, NS, NL | 7 | 0.6 | 1.8 | 19 | 2.6 | <i>Lepidostoma tibiale</i> | OFCAD277-08 | 12.1 |
| <i>Thelopsyche corona</i> Ross | NC | 0 | - | - | 2 | 0.0 | <i>Thelopsyche epilonis</i> | PKCAD332-07 | 7.8 |
| <i>Thelopsyche epilonis</i> Ross | NC | 0 | - | - | 1 | N/A | <i>Thelopsyche grisea</i> | PKCAD348-07 | 7.4 |
| <i>Thelopsyche grisea</i> (Hagen) | SC, VA | 0 | - | - | 2 | 1.6 | <i>Thelopsyche epilonis</i> | PKCAD332-07 | 7.4 |
| Leptoceridae | | | | | | | | | |
| <i>Ceraclea ancylus</i> (Vorhies) | ON, GA, MN | 0 | - | - | 5 | 3.8 | <i>Ceraclea flavo</i> | UMNEA126-08 | 4.0 |
| <i>Ceraclea cancellata</i> (Betten) | GA, AL, TN, NS, MB, ME, FL, VA, ON, MN, QC, NL | 0 | - | - | 19 | 6.5 | <i>Ceraclea maculata</i> | ONCAD530-08 | 9.8 |
| <i>Ceraclea diluta</i> (Hagen) | VA, MN, NB, ON, NS | 0 | - | - | 6 | 2.4 | <i>Ceraclea ancylus</i> | ONCAD430-08 | 14.6 |
| <i>Ceraclea flavo</i> (Banks) | FL, KY, VA, AL, MN | 0 | - | - | 5 | 10.2 | <i>Ceraclea ancylus</i> | ONCAD436-08 | 4.0 |
| <i>Ceraclea maculata</i> (Banks) | IL, ON, SC, FL, KY, MN, AR | 0 | - | - | 7 | 5.0 | <i>Ceraclea cancellata</i> | UMNEA114-08 | 9.8 |
| <i>Ceraclea nepha</i> (Ross) | VA, TN | 0 | - | - | 4 | 4.6 | <i>Ceraclea tarsipunctata</i> | PKCAD246-07 | 0.2 |
| <i>Ceraclea</i> new species | | 0 | - | - | 0 | - | - | - | - |
| <i>Ceraclea tarsipunctata</i> (Vorhies) | GA, FL, TN, ON, SC, NY, IL, MN | 0 | - | - | 8 | 0.8 | <i>Ceraclea nepha</i> | OFCAD322-08 | 0.2 |
| <i>Ceraclea transversa</i> (Hagen) | SC, TN, GA, NC, FL, VA, IL, NY, MB, MN, NS | 0 | - | - | 8 | 0.8 | <i>Ceraclea nepha</i> | OFCAD322-08 | 0.2 |
| <i>Leptocerus americanus</i> (Banks) | ON, GA, KY, MN, FL, QC | 3 | 2.6 | 3.9 | 16 | 6.8 | <i>Ceraclea cancellata</i> | PKCAD197-07 | 14.7 |
| <i>Mystacides sepulchralis</i> (Walker) | ON, SC, GA, NC, NY, NJ, MN, MB | 1 | N/A | N/A | 9 | 3.5 | <i>Oecetis avara</i> | UMNEA169-08 | 14.5 |
| <i>Nectopsyche candida</i> (Hagen) | MN, SC, VA, ON, LA, FL, AR, IL | 0 | - | - | 9 | 3.8 | <i>Nectopsyche exquisita</i> | UMNEA147-08 | 6.9 |
| <i>Nectopsyche</i> cf. <i>exquisita</i> (Walker) | NB | 3 | 0.0 | 0.0 | 5 | 1.8 | <i>Nectopsyche candida</i> | UMNEB663-08 | 8.1 |
| <i>Nectopsyche exquisita</i> (Walker) | ON, VA, MN | 0 | - | - | 3 | 1.4 | <i>Nectopsyche candida</i> | FLCAD101-09 | 6.9 |
| <i>Oecetis avara</i> (Banks) | TN, SC, NC, VA, MB, ON, MN, WY, FL, NS | 0 | - | - | 12 | 8.4 | <i>Oecetis inconspicua</i> | NECAD660-08 | 13.4 |
| <i>Oecetis inconspicua</i> (Walker) | MB, AB, CO, FL, GA, IL, KY, MN, NB, NJ, NY, NC, ON, OR, SK, SC, TN, TX, VT, VA, WA, MI, AR, QC, NL, NS | 0 | - | - | 71 | 16.4 | <i>Oecetis nocturna</i> | UMNEA220-08 | 7.3 |
| <i>Oecetis nocturna</i> Ross | FL, GA, MN, SC | 0 | - | - | 8 | 5.5 | <i>Oecetis inconspicua</i> | ONCAD469-08 | 7.3 |

TABLE 1. Continued.

| Species | Distribution for barcodes from global library | GSMNP Bioblitz | | | Global library | | | Distance to NN | |
|--|---|----------------|----------|---------|-----------------|-------------------|--|----------------|------|
| | | N | Mean ISD | Max ISD | Nearest species | NN BOLD ProcessID | | | |
| <i>Oecetis persimilis</i> (Banks) | GA, NC, SC, VA, MN | 0 | - | - | 7 | 2.0 | <i>Oecetis avana</i> | UMNEA174-08 | 14.3 |
| <i>Setodes stehri</i> (Ross) | | 0 | - | - | 0 | - | - | - | - |
| <i>Trienodes ignitus</i> (Walker) | FL, SC, GA, MN, NC | 2 | 0.3 | 0.3 | 8 | 2.7 | <i>Trienodes taeniatus</i> | OFCAD436-08 | 9.4 |
| <i>Trienodes injustus</i> (Hagen) | ON, VA, NY, MN | 0 | - | - | 4 | 2.4 | <i>Trienodes marginatus</i> | UMNEB287-08 | 5.9 |
| <i>Trienodes marginatus</i> Sibley | MN, SC, VA, NJ | 0 | - | - | 6 | 3.0 | <i>Trienodes tardus</i> | ELPYO410-08 | 0.0 |
| <i>Trienodes perna</i> Ross | VA, TN | 0 | - | - | 6 | 8.1 | <i>Trienodes tardus</i> | UMNEA364-08 | 13.0 |
| <i>Trienodes taeniatus</i> Ross | VA | 0 | - | - | 3 | 2.3 | <i>Trienodes ignitus</i> | UMNEA366-08 | 9.4 |
| <i>Trienodes tardus</i> Milne | MN, WA, OR, ON | 0 | - | - | 5 | 2.8 | <i>Trienodes marginatus</i> | UMNEB287-08 | 0.0 |
| Limnephilidae | | | | | | | | | |
| <i>Frenesia difficilis</i> (Walker) | ON | 2 | 0.3 | 0.3 | 3 | 2.4 | <i>Frenesia missa</i> | KKCAD384-07 | 10.6 |
| <i>Frenesia missa</i> Milne | MN | 0 | - | - | 2 | 2.6 | <i>Frenesia difficilis</i> | RMCAD597-08 | 10.6 |
| <i>Hydatophylax argus</i> (Harris) | PA, ON, NC, TN, NB, MN, NJ | 6 | 0.2 | 0.5 | 15 | 1.4 | <i>Pycnopsyche lepida</i> | PKCAD138-07 | 12.1 |
| <i>Ironoquia punctatissima</i> (Walker) | VA, ON, TN, GA | 0 | - | - | 5 | 6.1 | <i>Pycnopsyche divergens</i> | OFCAD772-08 | 15.3 |
| <i>Platycentropus radiatus</i> (Say) | ON, NC, SC, VA, TN, MN, IN, IL, NJ | 0 | - | - | 11 | 1.4 | <i>Pycnopsyche luculenta</i> | PKCAD133-07 | 14.0 |
| <i>Pseudostenophylax sparsus</i> (Banks) | ON, NY, WV | 0 | - | - | 3 | 2.7 | <i>Pseudostenophylax sparsus uniformis</i> | SMCAD420-07 | 9.5 |
| <i>Pseudostenophylax sparsus uniformis</i> (Betten) ^g | NC, VA, AL, ON, NS, TN | 2 | 0.8 | 0.8 | 8 | 5.5 | <i>Pseudostenophylax sparsus</i> | ONCAD793-08 | 9.5 |
| <i>Pycnopsyche antica</i> (Walker) | IL, TN | 0 | - | - | 3 | 1.9 | <i>Pycnopsyche conspersa</i> | OFCAD766-08 | 4.4 |
| <i>Pycnopsyche conspersa</i> Banks | PA, QC | 0 | - | - | 2 | 0.5 | <i>Pycnopsyche antica</i> | INHST056-09 | 4.4 |
| <i>Pycnopsyche divergens</i> (Walker) | VA | 0 | - | - | 2 | 0.0 | <i>Pycnopsyche subfasciata</i> | MBCAD174-08 | 12.0 |
| <i>Pycnopsyche flavata</i> (Banks) | VA, NC, TN | 8 | 0.5 | 1.1 | 11 | 3.7 | <i>Pycnopsyche gentilis</i> | PKCAD235-07 | 10.1 |
| <i>Pycnopsyche gentilis</i> (MacLachlan) | NC, VA, OH, TN, KY | 3 | 2.0 | 3.0 | 8 | 8.1 | <i>Pycnopsyche flavata</i> | SMCAD424-07 | 10.1 |
| <i>Pycnopsyche guttifera</i> (Walker) ^h | ON, NY, MB, MN | 1 | N/A | N/A | 5 | 2.8 | <i>Pycnopsyche antica</i> | INHST056-09 | 11.1 |
| <i>Pycnopsyche lepida</i> (Hagen) | ON, TN, SD, MN | 0 | - | - | 5 | 3.0 | <i>Pycnopsyche subfasciata</i> | MBCAD174-08 | 4.3 |
| <i>Pycnopsyche luculenta</i> (Betten) | TN, VA | 0 | - | - | 4 | 0.6 | <i>Pycnopsyche subfasciata</i> | UMNEA500-08 | 11.3 |
| <i>Pycnopsyche sonso</i> (Milne) | TN | 0 | - | - | 2 | 0.9 | <i>Pycnopsyche luculenta</i> | PKCAD133-07 | 14.5 |
| <i>Pycnopsyche subfasciata</i> (Say) | MD, VA, MI, MB, ON, MN | 0 | - | - | 6 | 3.3 | <i>Pycnopsyche lepida</i> | PKCAD138-07 | 4.3 |
| Molannidae | | | | | | | | | |
| <i>Molanna blanda</i> Sibley | VA, SC, KY, MN | 5 | 0.0 | 0.0 | 10 | 9.3 | <i>Molanna ulmerina</i> | UMNEB604-08 | 11.4 |
| <i>Molanna ulmerina</i> Navas | SC, VA, NJ | 0 | - | - | 4 | 0.3 | <i>Molanna blanda</i> | UMNEA509-08 | 11.4 |
| Odontoceridae | | | | | | | | | |
| <i>Pseudogoera singularis</i> Carpenter | SC, NC | 0 | - | - | 2 | 2.8 | <i>Heteroplectron americanum</i> | UMNEB015-08 | 17.3 |
| <i>Psilotreta amera</i> (Ross) | TN | 6 | 0.1 | 0.2 | 7 | 0.2 | <i>Psilotreta</i> JR sp. US1 | SMCAD447-07 | 6.6 |
| <i>Psilotreta frontalis</i> Banks | NY, VA, NC, SC | 15 | 0.5 | 1.9 | 20 | 4.3 | <i>Psilotreta labida</i> | UMNEB588-08 | 4.9 |
| <i>Psilotreta labida</i> Ross | VA, VA, NB, NY, NJ | 0 | - | - | 5 | 7.5 | <i>Psilotreta frontalis</i> | PKCAD512-07 | 4.9 |

TABLE 1. Continued.

| Species | Distribution for barcodes from global library | | | | GSMNP Bioblitz | | | | Global library | | | |
|---|---|----------|---------|----|----------------|-----------------------------------|-------------|------|----------------|-----------------|-------------------|----------------|
| | N | Mean ISD | Max ISD | N | Max ISD | Mean ISD | Max ISD | N | Max ISD | Nearest species | NN BOLD ProcessID | Distance to NN |
| <i>Psilotreta rossi</i> Wallace | 0 | - | - | 4 | 1.8 | <i>Psilotreta</i> sp. | SMCAD488-07 | 0.0 | | | | |
| <i>Psilotreta rufa</i> (Hagen) | 0 | - | - | 2 | 0.5 | <i>Psilotreta</i> sp. | SMCAD490-07 | 0.9 | | | | |
| <i>Psilotreta</i> JR sp. US1 | 5 | 0.1 | 0.3 | 5 | 0.2 | <i>Psilotreta rufa</i> | PKCAD162-07 | 4.7 | | | | |
| <i>Psilotreta</i> sp. | 4 | 0.2 | 0.3 | 4 | 0.3 | <i>Psilotreta rossi</i> | OFCAD836-08 | 0.0 | | | | |
| Philopotamidae | | | | | | | | | | | | |
| <i>Chimarra aterrima</i> Hagen | 0 | - | - | 10 | 13.6 | <i>Chimarra socia</i> | UMNEC262-08 | 15.7 | | | | |
| <i>Chimarra augusta</i> Morse | 1 | N/A | N/A | 4 | 2.7 | <i>Chimarra aterrima</i> | ECTRI066-10 | 18.3 | | | | |
| <i>Chimarra obscura</i> (Walker) | 0 | - | - | 16 | 8.0 | <i>Chimarra aterrima</i> | PKCAD397-07 | 18.4 | | | | |
| <i>Chimarra socia</i> Hagen | 0 | - | - | 7 | 8.7 | <i>Chimarra aterrima</i> | CBCAD355-10 | 15.7 | | | | |
| <i>Dolophilodes distincta</i> (Walker) ⁱ | 30 | 2.1 | 14.0 | 38 | 14.1 | <i>Wormaldia shawnee</i> | PKCAD129-07 | 16.6 | | | | |
| <i>Fumonta major</i> (Banks) ^j | 10 | 0.3 | 0.9 | 13 | 1.1 | <i>Wormaldia moesta</i> | SMCAD341-07 | 16.6 | | | | |
| <i>Wormaldia moesta</i> (Banks) | 8 | 0.5 | 0.9 | 14 | 9.2 | <i>Wormaldia shawnee</i> | PKCAD129-07 | 14.1 | | | | |
| <i>Wormaldia mohri</i> (Ross) | 0 | - | - | 2 | 0.3 | <i>Wormaldia shawnee</i> | PKCAD319-07 | 17.4 | | | | |
| <i>Wormaldia shawnee</i> (Ross) | 0 | - | - | 2 | 0.2 | <i>Wormaldia moesta</i> | PKCAD012-07 | 14.1 | | | | |
| <i>Sisko sisko</i> (Ross) ^k | 0 | - | - | 1 | N/A | <i>Dolophilodes distincta</i> | SMCAD239-07 | 17.6 | | | | |
| Phyganeidae | | | | | | | | | | | | |
| <i>Agrypnia vestita</i> (Walker) | 0 | - | - | 5 | 2.2 | <i>Ptilostomis ocellifera</i> | ECTRI033-10 | 15.3 | | | | |
| <i>Ptilostomis ocellifera</i> (Walker) | 0 | - | - | 11 | 1.4 | <i>Ptilostomis postica</i> | NECAD188-08 | 11.6 | | | | |
| <i>Ptilostomis postica</i> (Walker) | 0 | - | - | 5 | 0.6 | <i>Ptilostomis ocellifera</i> | INHST035-09 | 11.6 | | | | |
| Polycentropodidae | | | | | | | | | | | | |
| <i>Cynnellus fraternus</i> (Banks) | 0 | - | - | 4 | 0.3 | <i>Polycentropus crassicornis</i> | MBCAD205-08 | 16.0 | | | | |
| <i>Neureclipsis piersoni</i> Frazer and Harris ^l | 0 | - | - | 0 | - | - | - | - | | | | |
| <i>Neureclipsis crepuscularis</i> (Walker) | 0 | - | - | 8 | 12.4 | <i>Nyctiophylax celta</i> | SMCAD034-07 | 14.8 | | | | |
| <i>Nyctiophylax affinis</i> (Banks) | 1 | N/A | N/A | 5 | 8.6 | <i>Nyctiophylax unctus</i> | NECAD225-08 | 6.6 | | | | |
| <i>Nyctiophylax banksi</i> Morse | 0 | - | - | 2 | 0.0 | <i>Nyctiophylax affinis</i> | ECTRI058-10 | 7.6 | | | | |
| <i>Nyctiophylax celta</i> Denning | 3 | 0.0 | 0.0 | 7 | 0.5 | <i>Nyctiophylax affinis</i> | ECTRI058-10 | 8.4 | | | | |
| <i>Nyctiophylax denningi</i> Morse | 0 | - | - | 4 | 0.0 | <i>Nyctiophylax moestus</i> | UMNEB575-08 | 3.2 | | | | |
| <i>Nyctiophylax moestus</i> Banks | 0 | - | - | 6 | 1.0 | <i>Nyctiophylax denningi</i> | KKUMN297-10 | 3.2 | | | | |
| <i>Nyctiophylax nephophilus</i> Flint | 7 | 0.1 | 0.2 | 12 | 0.5 | <i>Nyctiophylax celta</i> | NECAD211-08 | 8.5 | | | | |
| <i>Nyctiophylax unctus</i> Ross | 0 | - | - | 2 | 0.0 | <i>Nyctiophylax affinis</i> | ECTRI058-10 | 6.6 | | | | |
| <i>Polycentropus blicklei</i> Ross and Yamamoto | 0 | - | - | 3 | 2.8 | <i>Polycentropus carolinensis</i> | SMCAD454-07 | 2.0 | | | | |
| <i>Polycentropus carlsoni</i> Morse | 0 | - | - | 0 | - | - | - | - | | | | |
| <i>Polycentropus carolinensis</i> Banks | 6 | 0.0 | 0.0 | 9 | 0.5 | <i>Polycentropus blicklei</i> | NECAD247-08 | 2.0 | | | | |

TABLE 1. Continued.

| Species | Distribution for barcodes from global library | GSMNP Bioblitz | | | | Global library | | | |
|--|--|----------------|----------|---------|----|----------------|-----------------------------------|-------------------|----------------|
| | | N | Mean ISD | Max ISD | N | Max ISD | Nearest species | NN BOLD ProcessID | Distance to NN |
| <i>Polycentropus cinereus</i> Hagen | ON, VA, NC, WV, WA, NB, ON, MB, MN, FL, TN, AL, NJ | 3 | 8.2 | 9.9 | 20 | 10.5 | <i>Polycentropus rickeri</i> | NECAD297-08 | 10.7 |
| <i>Polycentropus colei</i> Ross | NC | 0 | - | - | 3 | 6.9 | <i>Polycentropus rickeri</i> | NECAD297-08 | 0.0 |
| <i>Polycentropus confusus</i> Hagen | NB, MN, AB, SC, VA, GA, NJ | 10 | 0.1 | 0.3 | 17 | 0.7 | <i>Polycentropus carolinensis</i> | PKCAD273-07 | 8.6 |
| <i>Polycentropus crassicornis</i> Walker | MB, ON | 0 | - | - | 4 | 0.8 | <i>Polycentropus colei</i> | PKCAD108-07 | 7.6 |
| <i>Polycentropus maculatus</i> Banks | TN | 1 | N/A | N/A | 2 | 0.0 | <i>Polycentropus carolinensis</i> | PKCAD273-07 | 4.6 |
| <i>Polycentropus rickeri</i> Yamamoto | TN, NC | 0 | - | - | 2 | 5.0 | <i>Polycentropus colei</i> | PKCAD832-08 | 0.0 |
| Psychomyiidae | | | | | | | | | |
| <i>Lype diversa</i> (Banks) | FL, MN, NJ, NY, NB, VA | 11 | 0.4 | 1.1 | 17 | 15.0 | <i>Psychomyia flavida</i> | AVMTT034-09 | 20.2 |
| <i>Psychomyia flavida</i> Hagen | TN, VA, KY, AZ, MT, ON, AB, MN, NB, SD, MB | 13 | 0.7 | 1.6 | 28 | 4.1 | <i>Psychomyia nomada</i> | PKCAD143-07 | 13.9 |
| <i>Psychomyia nomada</i> (Ross) | VA, SC | 0 | - | - | 3 | 12.2 | <i>Psychomyia flavida</i> | ELPYO471-08 | 13.9 |
| Ptilocolepidae | | | | | | | | | |
| <i>Palaagapetus celsus</i> (Ross) ^m | NC | 0 | - | - | 2 | 2.2 | <i>Heteroplectron americanum</i> | PKCAD789-08 | 16.2 |
| Rhyacophilidae | | | | | | | | | |
| <i>Rhyacophila accola</i> Flint | NC | 0 | - | - | 2 | 0.3 | <i>Rhyacophila banksi</i> | PKCAD668-08 | 10.0 |
| <i>Rhyacophila acutiloba</i> Morse and Ross ⁿ | NB, SC, NC | 11 | 0.0 | 0.2 | 14 | 0.3 | <i>Rhyacophila celadon</i> | PKCAD292-07 | 6.6 |
| <i>Rhyacophila amicis</i> Ross | NC | 1 | N/A | N/A | 2 | 0.0 | <i>Rhyacophila mainensis</i> | PKCAD693-08 | 4.6 |
| <i>Rhyacophila appalachia</i> Morse and Ross | VA | 0 | - | - | 2 | 1.0 | <i>Rhyacophila celadon</i> | PKCAD292-07 | 1.0 |
| <i>Rhyacophila atrata</i> Banks | NC | 2 | 0.0 | 0.0 | 6 | 0.6 | <i>Rhyacophila minor</i> | PKCAD822-08 | 14.9 |
| <i>Rhyacophila banksi</i> Ross | VA, MD, AL, ON, VA | 0 | - | - | 8 | 4.4 | <i>Rhyacophila accola</i> | PKCAD738-08 | 10.0 |
| <i>Rhyacophila carolina</i> Banks | NC, VA, TN, FL, SC | 7 | 0.7 | 1.1 | 13 | 3.5 | <i>Rhyacophila teddyi</i> | PKCAD299-07 | 9.5 |
| <i>Rhyacophila carpenteri</i> Milne | NC, VA | 0 | - | - | 2 | 5.1 | <i>Rhyacophila acutiloba</i> | SMCAD554-07 | 11.9 |
| <i>Rhyacophila celadon</i> Etnier, Stocks, and Parker | NC | 0 | - | - | 1 | N/A | <i>Rhyacophila appalachia</i> | NECAD340-08 | 1.0 |
| <i>Rhyacophila formosa</i> Banks | NC, SC, TN | 0 | - | - | 3 | 1.4 | <i>Rhyacophila fuscula</i> | DRCAD019-08 | 12.8 |
| <i>Rhyacophila fuscula</i> (Walker) | NY, VA, NC, ON | 19 | 1.7 | 3.4 | 26 | 6.6 | <i>Rhyacophila formosa</i> | HIEPT034-09 | 12.8 |
| <i>Rhyacophila glaberrima</i> Ulmer | AL, KY, TN, NC, VA | 1 | N/A | N/A | 11 | 14.0 | <i>Rhyacophila carolina</i> | PKCAD326-07 | 15.6 |
| <i>Rhyacophila ledra</i> Ross | AL, TN | 0 | - | - | 3 | 4.3 | <i>Rhyacophila carolina</i> | PKCAD326-07 | 11.2 |
| <i>Rhyacophila mainensis</i> Banks | NB, VA | 0 | - | - | 2 | 0.3 | <i>Rhyacophila amicis</i> | KKUMIN363-10 | 4.6 |
| <i>Rhyacophila minor</i> Banks ^o | VA, NC | 1 | N/A | N/A | 5 | 0.9 | <i>Rhyacophila atrata</i> | SMCAD345-07 | 14.9 |
| <i>Rhyacophila montana</i> Carpenter | VA, NC | 0 | - | - | 0 | - | - | - | - |
| <i>Rhyacophila myctra</i> Ross | VA, NC | 2 | 0.2 | 0.2 | 5 | 7.6 | <i>Rhyacophila appalachia</i> | NECAD340-08 | 6.5 |
| <i>Rhyacophila</i> new species | | 0 | - | - | 0 | - | - | - | - |

TABLE 1. Continued.

| Species | Distribution for barcodes from global library | | | | GSMNP Bioblitz | | | | Global library | | | |
|---|---|----------|------------|------------|----------------|------------|------------|-------------------------------|-------------------|----------------|--|--|
| | N | Mean ISD | Max ISD | N | N | Mean ISD | Max ISD | Nearest species | NN BOLD ProcessID | Distance to NN | | |
| <i>Rhyacophila nigrita</i> Banks | NC | 2 | 1.2 | 1.2 | 3 | 1.2 | 1.2 | <i>Rhyacophila appalachia</i> | NECAD340-08 | 7.1 | | |
| <i>Rhyacophila teddyi</i> Ross | NC | 0 | – | – | 1 | N/A | N/A | <i>Rhyacophila carolina</i> | PKCAD326-07 | 9.5 | | |
| <i>Rhyacophila toroa</i> Hagen | NY, VA, NC, KY, TN, SC | 0 | – | – | 7 | 8.5 | 8.5 | <i>Rhyacophila carolina</i> | PKCAD326-07 | 14.7 | | |
| <i>Rhyacophila vibox</i> Milne | NY | 0 | – | – | 2 | 0.3 | 0.3 | <i>Rhyacophila banksi</i> | NECAD342-08 | 11.8 | | |
| Sericostomatidae | | | | | | | | | | | | |
| <i>Agarodes tetron</i> (Ross) | NC, TN | 0 | – | – | 3 | 0.0 | 0.0 | <i>Fattigia pele</i> | PKCAD180-07 | 16.3 | | |
| <i>Fattigia pele</i> (Ross) | NC | 1 | N/A | N/A | 2 | 0.3 | 0.3 | <i>Agarodes tetron</i> | NECAD470-08 | 16.4 | | |
| Uenoidea | | | | | | | | | | | | |
| <i>Neophylax aniqua</i> Ross | KY | 0 | – | – | 3 | 3.9 | 3.9 | <i>Neophylax fuscus</i> | NECAD515-08 | 9.3 | | |
| <i>Neophylax consimilis</i> Betten ^a | VA, TN | 1 | N/A | N/A | 3 | 3.5 | 3.5 | <i>Neophylax fuscus</i> | PKCAD717-08 | 7.7 | | |
| <i>Neophylax fuscus</i> Banks | PA, TN, VA, MN | 0 | – | – | 4 | 5.1 | 5.1 | <i>Neophylax mitchelli</i> | SMCAD236-07 | 7.4 | | |
| <i>Neophylax kolodskii</i> Parker | | 0 | – | – | 0 | – | – | – | – | – | | |
| <i>Neophylax mitchelli</i> Carpenter | NY, VA | 17 | 0.6 | 2.0 | 19 | 4.2 | 4.2 | <i>Neophylax fuscus</i> | PKCAD717-08 | 7.4 | | |
| <i>Neophylax oligius</i> Ross | MS, GA, ON, PA, MN | 0 | – | – | 6 | 4.8 | 4.8 | <i>Neophylax mitchelli</i> | SMCAD237-07 | 7.7 | | |
| <i>Neophylax ornatus</i> Banks | NC, NB, NS, VA, TN, PE | 1 | N/A | N/A | 8 | 4.8 | 4.8 | <i>Neophylax consimilis</i> | NECAD507-08 | 7.8 | | |
| Average | | | 0.7 | 1.4 | | 3.1 | 3.1 | | | 10.1 | | |

^a As *Apatania praevolans* Morse and *A. rossi* Morse in Parker et al. (2007)

^b The record for *Beraea nigrita* Banks was based on the study in Stoneburner (1977). It remains provisional because the voucher is not available and the species has not been recollected.

^c *Agapetus walkeri* was reported in Parker et al. (2007) as *A. rossi* Denning, which is being recognized as the junior synonym of *A. walkeri* (Etnier et al. 2010).

^d Including specimens identified as *Cheumatopsyche* nr. *ela*

^e Short sequence (325 bp), not included in distance analysis

^f Specimens originally identified as *Lepidostoma compressum* Etnier and Way in Parker et al. (2007) were re-evaluated by Etnier as *L. pictile*. Thus *L. compressum* is no longer reported from the GSMNP.

^g As *Pseudostenophylax uniformis* (Betten) in Parker et al. (2007). This taxon was considered as a subspecies of *P. sparsus* (Banks) by Schmid (1991) but can be readily distinguished from the latter using morphology and COI. Thus, it is recognized as a distinct taxon in this analysis. However, because we have not examined enough sample series throughout its distribution range, a reiteration of a full species status for *P. uniformis* is not being proposed in our study.

^h As *Pycnopsyche guttifer* in Parker et al. (2007)

ⁱ As *Dolophilodes distinctus* in Parker et al. (2007)

^j As *Dolophilodes major* in Parker et al. (2007)

^k As *Wormaldia sisko* in Parker et al. (2007)

^l *Neureclipsis piersoni* is recently reported from the GSMNP based on Parker's personal observation.

^m As in Hydroptilidae in Parker et al. (2007)

ⁿ The identification of *Rhyacophila acutiloba* was based on barcodes from just 2 male specimens from eastern Canada (NB). We consider the identification provisional as the *R. nigrita* group is in need of taxonomic revision.

^o As *Rhyacophila minor* in Parker et al. (2007)

^p Specimens originally identified as *Neophylax concinnus* McLachlan in Parker et al. (2007) were re-evaluated by Etnier as *N. consimilis*. Thus *N. concinnus* is no longer reported from the GSMNP.

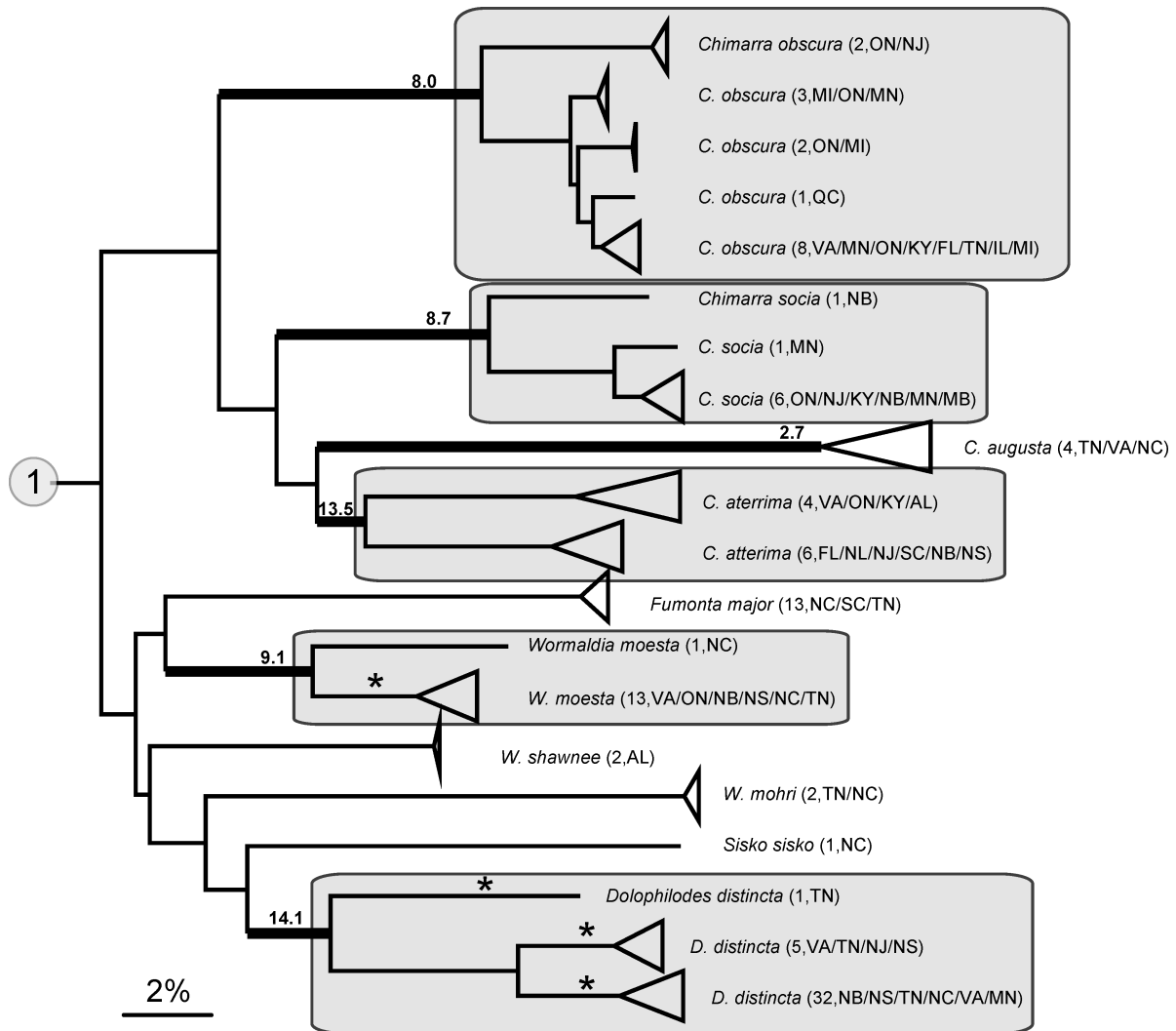


FIG. 4. Neighbor-Joining tree for clade 1. This clade includes members of the family Philopotamidae. Terminal leaves are collapsed based on morphological species or distinct cytochrome c oxidase subunit I (COI) haplogroups. Number of individuals and distributions (see Table 1 for postal abbreviation for states or provinces) are provided in brackets next to corresponding species. Species possessing $\geq 2\%$ maximum intraspecific divergence are highlighted by thickened braches. Maximum intraspecific divergence values are noted on the leading branches. Taxa included in a grey block with a solid line include species for which the barcode data resolved current species taxonomy, but for which intraspecific variation was $\geq 8\%$. In these highly divergent species, haplotypes obtained from the 2007 Great Smoky Mountains National Park (GSMNP) bioblitz are noted with *.

supported by earlier observations that members of this complex show pronounced genitalic variation, even among sympatric individuals. The long-standing difficulty of species diagnosis in this group is further reflected by the fact that *O. inconspicua* has 8 synonyms (Morse 2010). This taxonomic uncertainty is now gaining clarity. Seven distinguishable larval types were described for this species complex (Floyd 1995). The coupling of barcode results with morphol-

ogy has revealed diagnostic characters among adults of some component taxa (Zhou et al. 2010). However, extensive sampling accompanied by sequencing of type material and careful morphological examination will be required to clarify species boundaries, to apply the existing names properly, and to describe any new species that result. Although the other 4 taxa in this category were sampled less comprehensively than *D. modesta* and *O. inconspicua*, diagnostic morphological

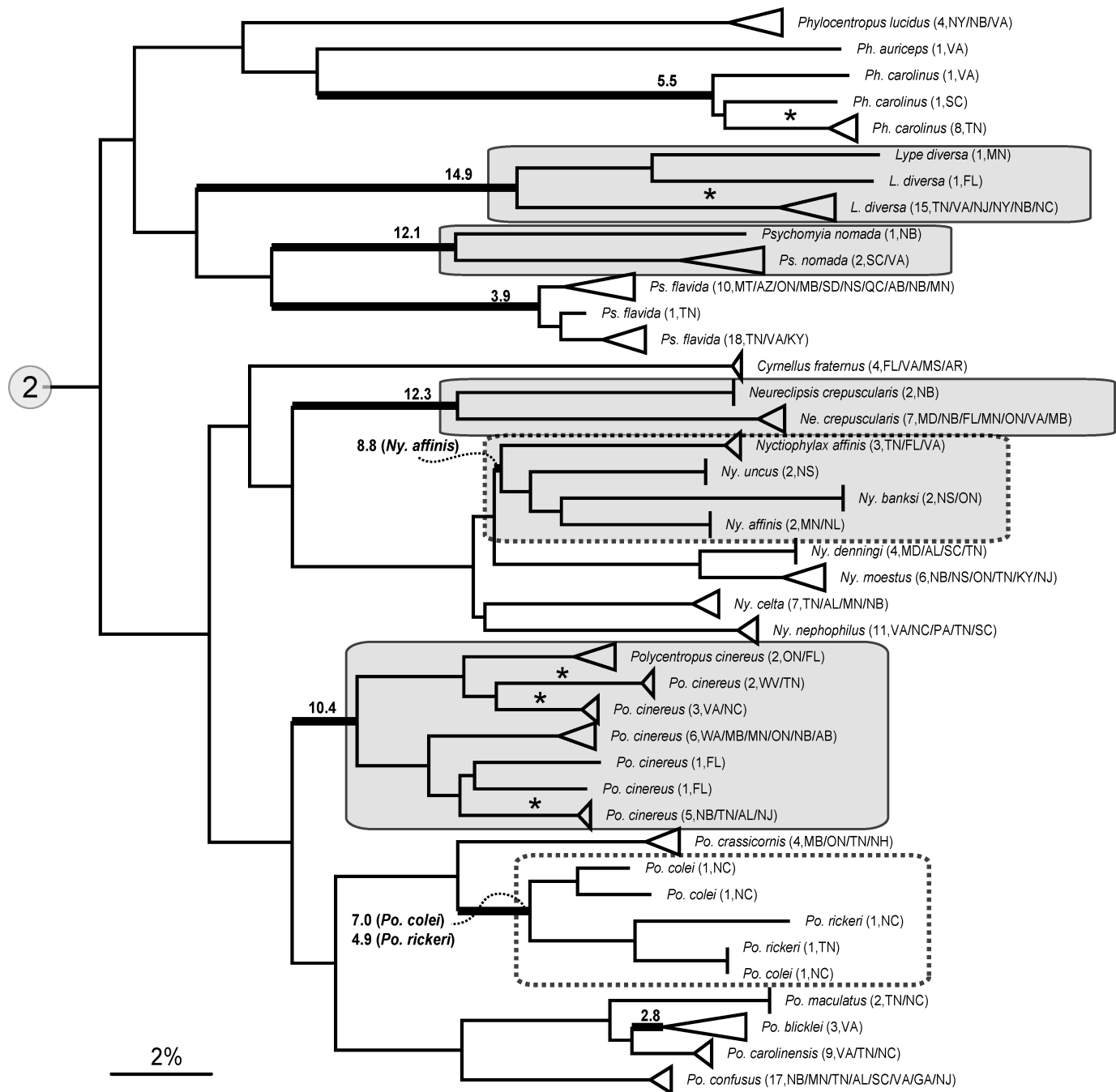


FIG. 5. Neighbor-Joining tree for clade 2. This clade includes members of the family Polycentropodidae. Species groups included in dotted lines represent those for which barcode data failed to resolve monophyletic taxa. Species groups not included in a grey block are taxa for which the barcode data failed to resolve species identity. Species groups in a grey block were not monophyletic but could be identified from barcode sequences. Maximum divergence values $\geq 2\%$ are noted for each taxon showing paraphyly included in the dotted lines. Other figure annotations follow those of Fig. 4.

differences have been observed in at least some members of these complexes, e.g., *Ceraclea flava* (Banks) from Florida (Appendix 3).

Category 3: barcode sequences recovered monophyletic taxa, but genetic distances were very high.—The present

study has revealed that many morphologically recognized caddisfly species include lineages with deep genetic divergences. In fact, 11% of the species in our study possessed COI lineages with a maximum divergence $>8\%$, suggesting that current taxonomy

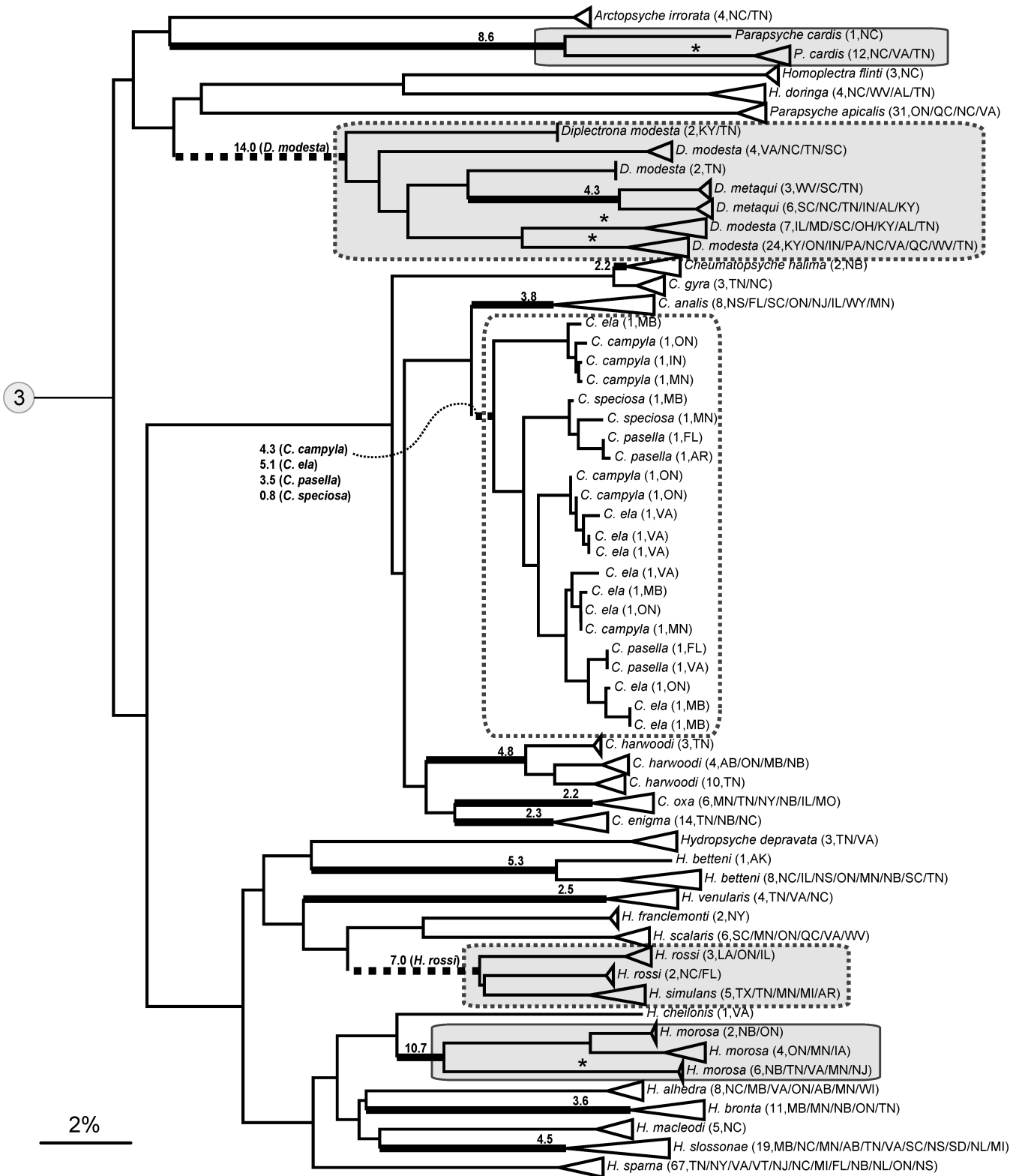


FIG. 6. Neighbor-Joining tree for clade 3. This clade includes members of the family Hydropsychidae. Annotations follow those of Figs 4 and 5.

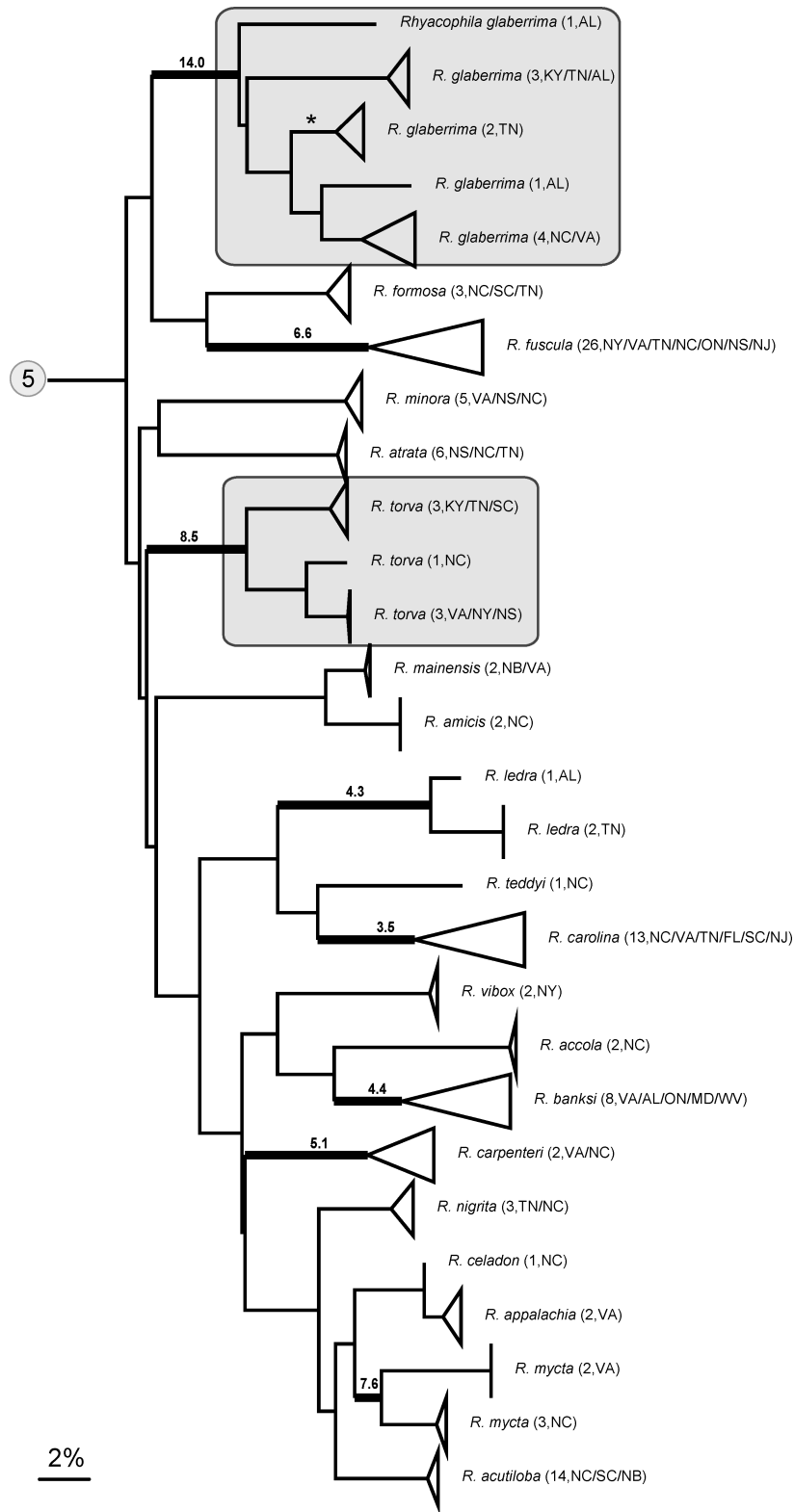


FIG. 7. Neighbor-Joining tree for clade 5. This clade includes members of the family Rhyacophilidae. Annotations follow those of Figs 4 and 5.

has overlooked some species. Prior studies on other insect groups, including lepidopterans, hymenopterans, and dipterans, have shown that such deep COI divergences regularly reflect unrecognized species, a conclusion based on the presence of concordant differences in morphology, ecology, and host-specificity among barcode clusters with such high divergence (Hebert et al. 2004, 2010, Smith et al. 2006a, 2007, 2008). A similar pattern of morphological differentiation among deeply divergent COI haplogroups has been reported in caddisflies and mayflies (Zhou et al. 2010).

Most species showing deep COI divergence have not undergone intensive morphological scrutiny, but the hypotheses held by many taxonomists that certain caddisfly species may indeed be complexes are supported by our barcode analyses, such as in *Hydropsyche rossi* Flint, *Rhyacophila glaberrima* Ulmer, *R. mycta* Ross, and *Helicopsyche borealis* (Hagen). Furthermore, cryptic species have regularly been encountered in recent studies of Trichoptera (Jackson and Resh 1992, 1998, Whitlock and Morse 1994, Pauls et al. 2006, 2009, 2010, Smith et al. 2006b, Zhou et al. 2007, 2009, 2010, Bálint et al. 2008, Lehrian et al. 2009). DNA barcoding is playing an increasingly important role in highlighting taxa that should be investigated in more detail and in allowing morphological comparisons to focus on groups that show genetic divergence.

Taxonomy and barcodes

Critics of DNA barcoding have based their concerns largely on theoretical objections (e.g., Rubinoff et al. 2006), or on failure to gain perfect resolution in a particular taxonomic group (Whitworth et al. 2007, Wiemers and Fiedler 2007, Alexander et al. 2009). Theoretical objections ultimately must account for actual data. Our study provides yet another example of the effectiveness of DNA barcoding as a tool for species identification, so it further weakens theoretical objections. Case studies have revealed that barcoding is not a perfect technology, but neither is any other approach for species recognition. Nevertheless, some generalized conclusions of barcoding failure are often made based on case studies in which just a few species within a particular group have been examined (e.g., Whitworth et al. 2007) and on the presumption that existing taxonomic systems are static and lack the capacity to evolve or to embrace new evidence (e.g., Alexander et al. 2009). Our results suggest that it is a great oversimplification to conclude that all cases of incomplete correspondence between current taxonomic assignments and barcode clusters reflect a flaw in barcode methods. For example, the heterogeneity

in COI divergence values found within and among many caddisfly “species” in our study could be interpreted as the absence of a barcoding gap or the lack of a limit on intraspecific sequence variation in caddisflies. However, a critical examination of species with such properties reveals the strong concordance of anomalous results with the need for a better taxonomic investigation in the relevant taxa. We do not claim that barcode-based identifications are superior to morphological assignments when conflicts arise. However, we do argue that every exceptional case (e.g., nonmonophyletic species or taxa showing >2% intraspecific divergence following a more conservative standard for the caddisflies) should be examined in detail to understand the biological origins and implications of the divergent pattern. From the taxonomic point of view, species hypotheses proposed by morphology have been and always will be subject to nomenclatural revision when new evidence or analytical methods become available. We anticipate that some current barcoding failures will actually prove to be successes when taxonomists use barcode data to conduct much needed revisions. In fact, some recent nomenclatural changes have been supported by the barcode analyses in our study, e.g., the reinstatement of *Cheumatopsyche enigma* Ross, Morse, and Gordon as a full species instead of a subspecies of *C. harwoodi* Denning and Gordon (Flint et al. 2004). On the other hand, some past synonymization may have to be revised, e.g., the treatment of *Drusus uniformis* Betten as a subspecies of *Pseudostenophylax sparsus* (Banks) (Schmid 1991). These 2 taxa can be readily differentiated based on color patterns of the forewings and genitalic structures and by barcodes, as revealed in our study (Fig. 12). In fact, they have been treated as separate species in practice by many taxonomists despite Schmid’s (1991) revision. Thus, DNA barcodes (i.e., standardized mitochondrial COI sequences) can be used for identification of caddisflies and to provide a deeper understanding of species boundaries and of biodiversity at large.

Conclusion

DNA barcoding is a robust tool for identifying the Trichoptera species that occur within the GSMNP. The barcode analyses have drawn attention to various interesting issues in caddisfly biodiversity, ranging from the need for a re-evaluation of taxa in a number of species groups to the necessity of an appropriate interpretation of barcode analyses and its implications for understanding species diversity. Last, both local bioblitz surveys and global DNA-barcoding projects

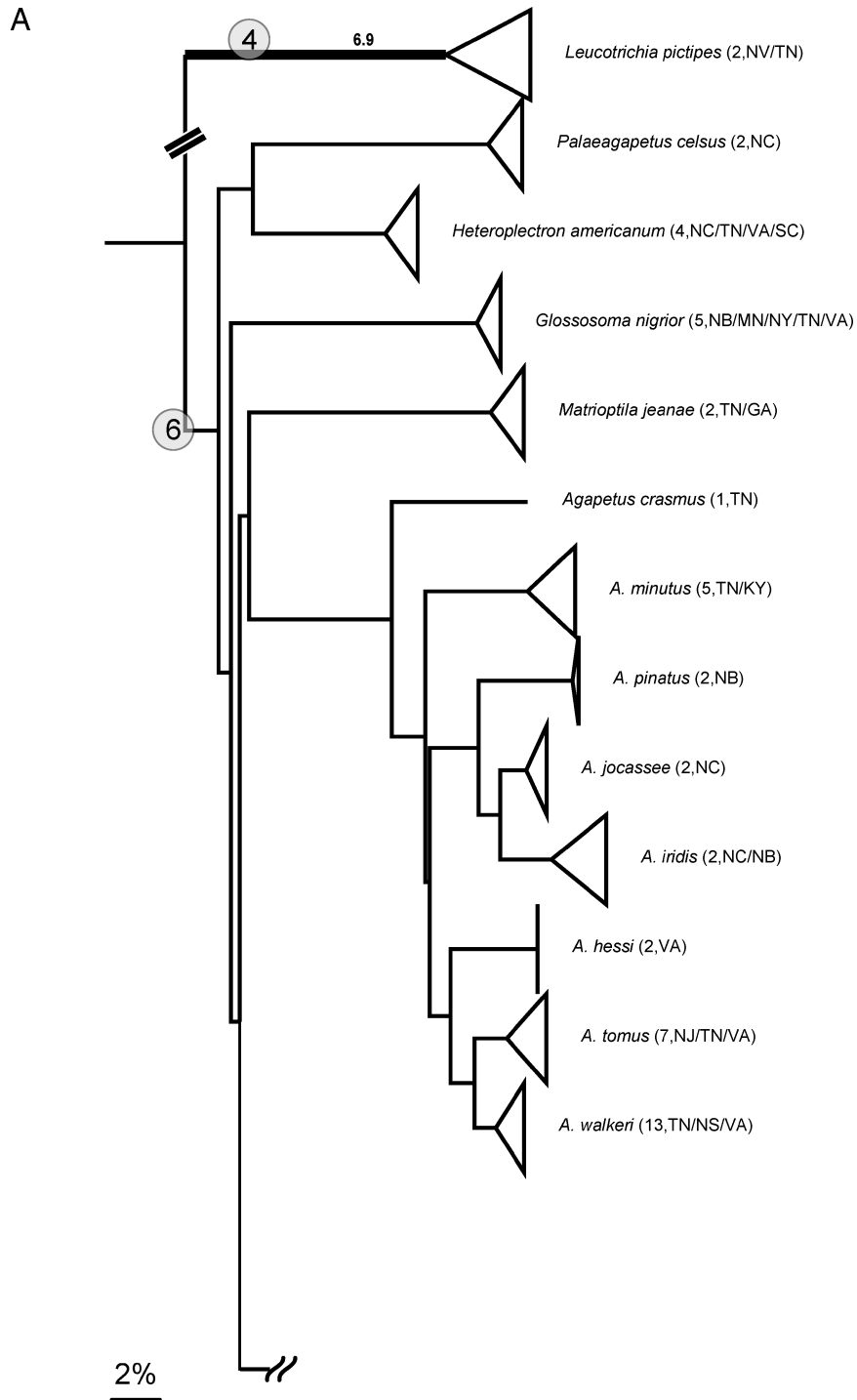


FIG. 8. A and B.—Neighbor-Joining (NJ) tree for clades 4 and 6. Clade 4 is pruned from the NJ tree in Fig. 3 and reattached to clade 6. This tree includes members of families Hydroptilidae, Calamoceratidae (in part), Glossosomatidae, and Ptilocolepidae. Annotations follow those of Figs 4 and 5.

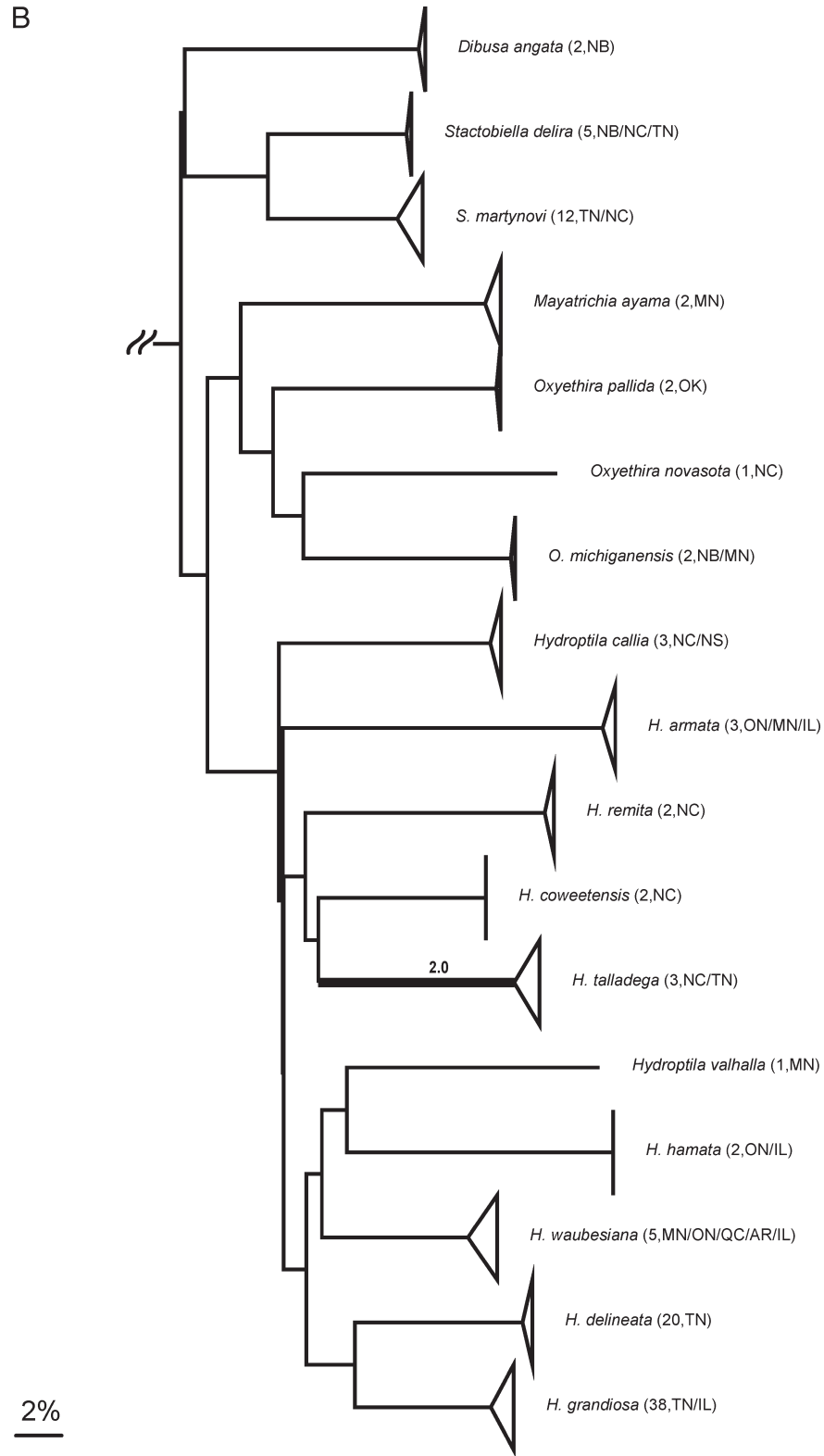


FIG. 8. Continued.

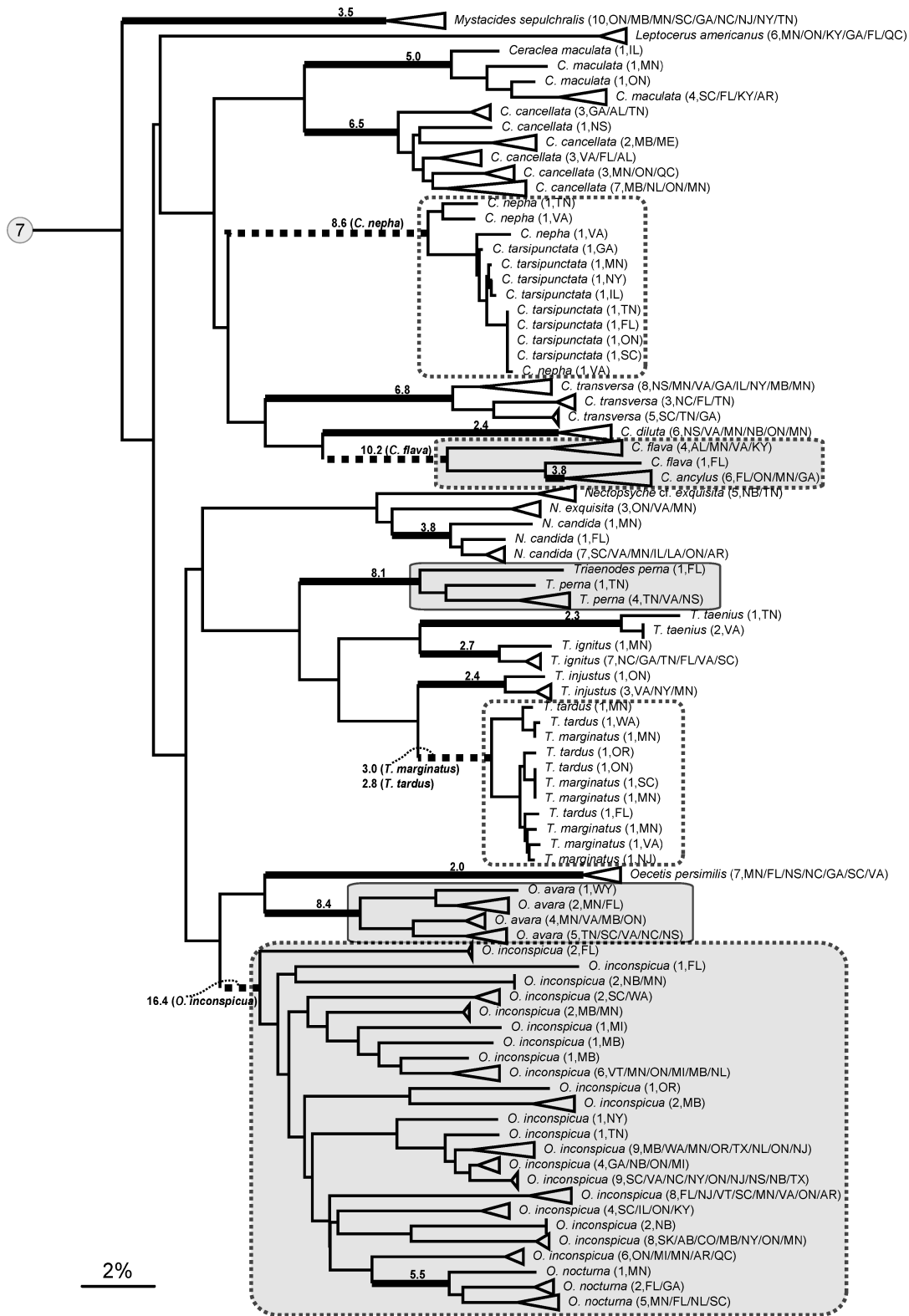


FIG. 9. Neighbor-Joining tree for clade 7. This clade includes members of the family Leptoceridae. Annotations follow those of Figs 4 and 5.

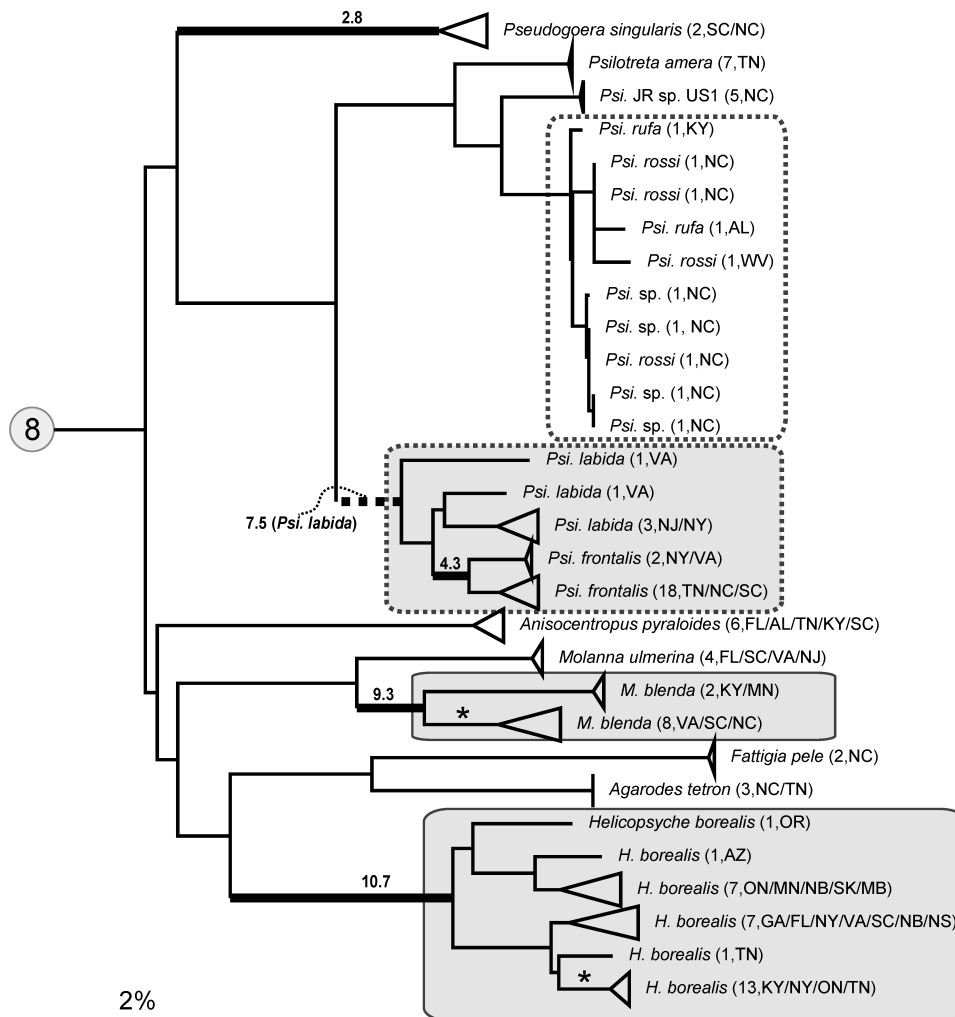


FIG. 10. Neighbor-Joining tree for clade 8. This clade includes members of families Odontoceridae, Calamoceratidae (in part), Molannidae, Sericostomatidae, and Helicopsychidae. Annotations follow those of Figs 4 and 5.

have played critical roles in assembling a barcode library for a local site. The strategy for barcode library construction developed in our study should serve as a model for similar efforts in other geographic regions.

Acknowledgements

The 2007 bioblitz was supported by Discover Life in America (DLIA2007-08) and by the GSMNP. Sequencing costs and informatics support were provided by grants from the Natural Sciences and Engineering Research Council of Canada and by Genome Canada to PDNH. The US Geological Survey provided funding from the Natural Resources Protection Program to CRP. Funding from Environment Canada's Water Science and Technology program enabled surveys in New Brunswick. Parks Canada supported collecting efforts across Canada under permit number NAP-2008-1636. We thank other members of the

bioblitz team including Ian Stocks, Lauren Harvey, Katy Hind, John Wilson, and Anne Timm, for aid with collections and identifications. We thank the following organizations for contributing crucial specimens to this study and hosting voucher specimens: National Museum of Natural History, University of Minnesota Insect Collection, Royal Ontario Museum, Florida A&M University, Illinois Natural History Survey, Environment Canada, and Rutgers University. Numerous collaborators have helped to collect specimens, maintain vouchers, and provide taxonomic advice. We particularly thank Ralph Holzenthal, Karl Kjer, Roger Blahnik, Donald Baird, Kristie Heard, Boris Kondratieff, John Morse, Luke Myers, and Andrew Rasmussen. Sheng Li of Peking University provided help in generating the sample distribution map. Last, we thank colleagues at the Canadian Centre for DNA Barcoding, and the Biodiversity

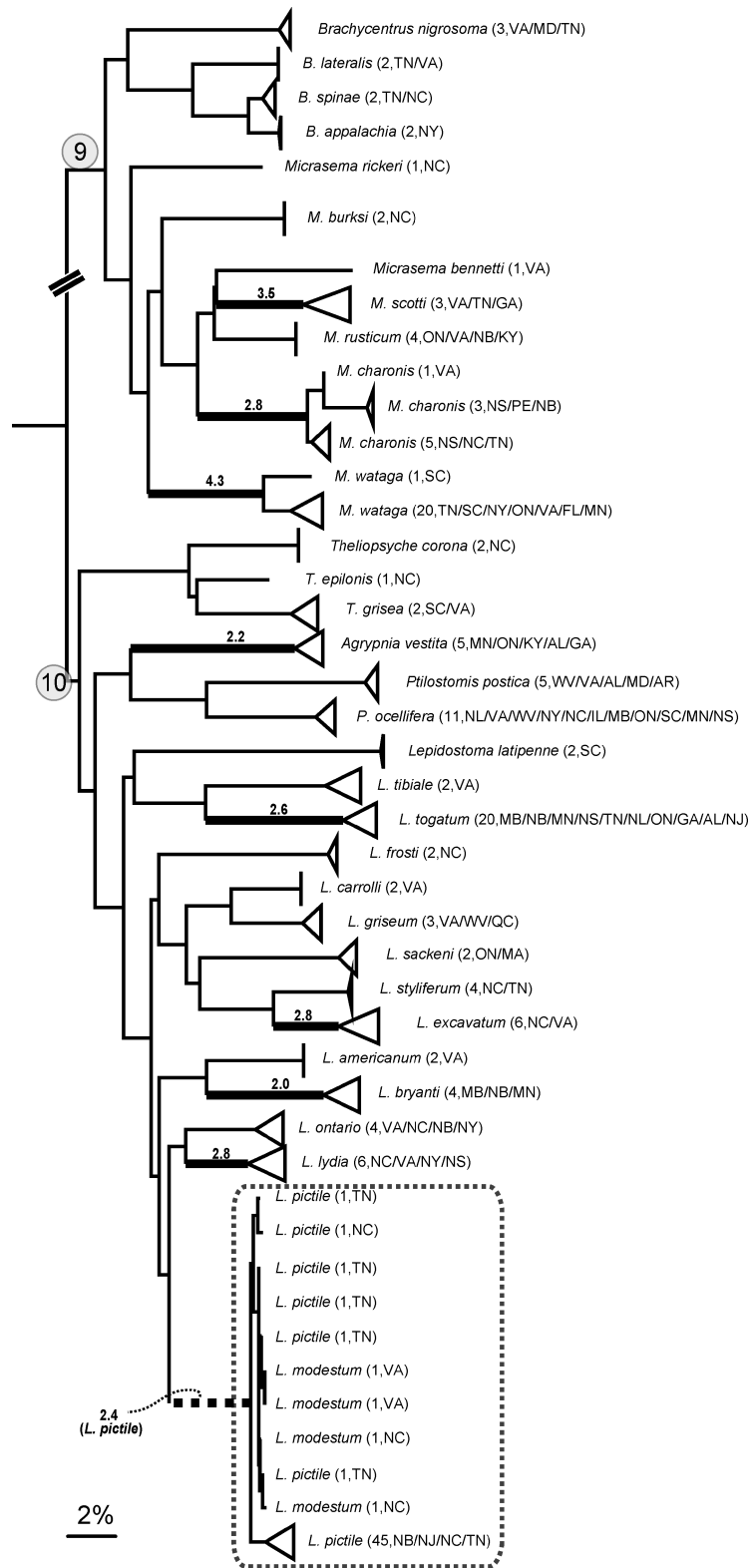


FIG. 11. Neighbor-Joining tree for clades 9 and 10. This clade includes members of families Lepidostomatidae, Phryganeidae, and Brachycentridae. Annotations follow those of Figs 4 and 5.

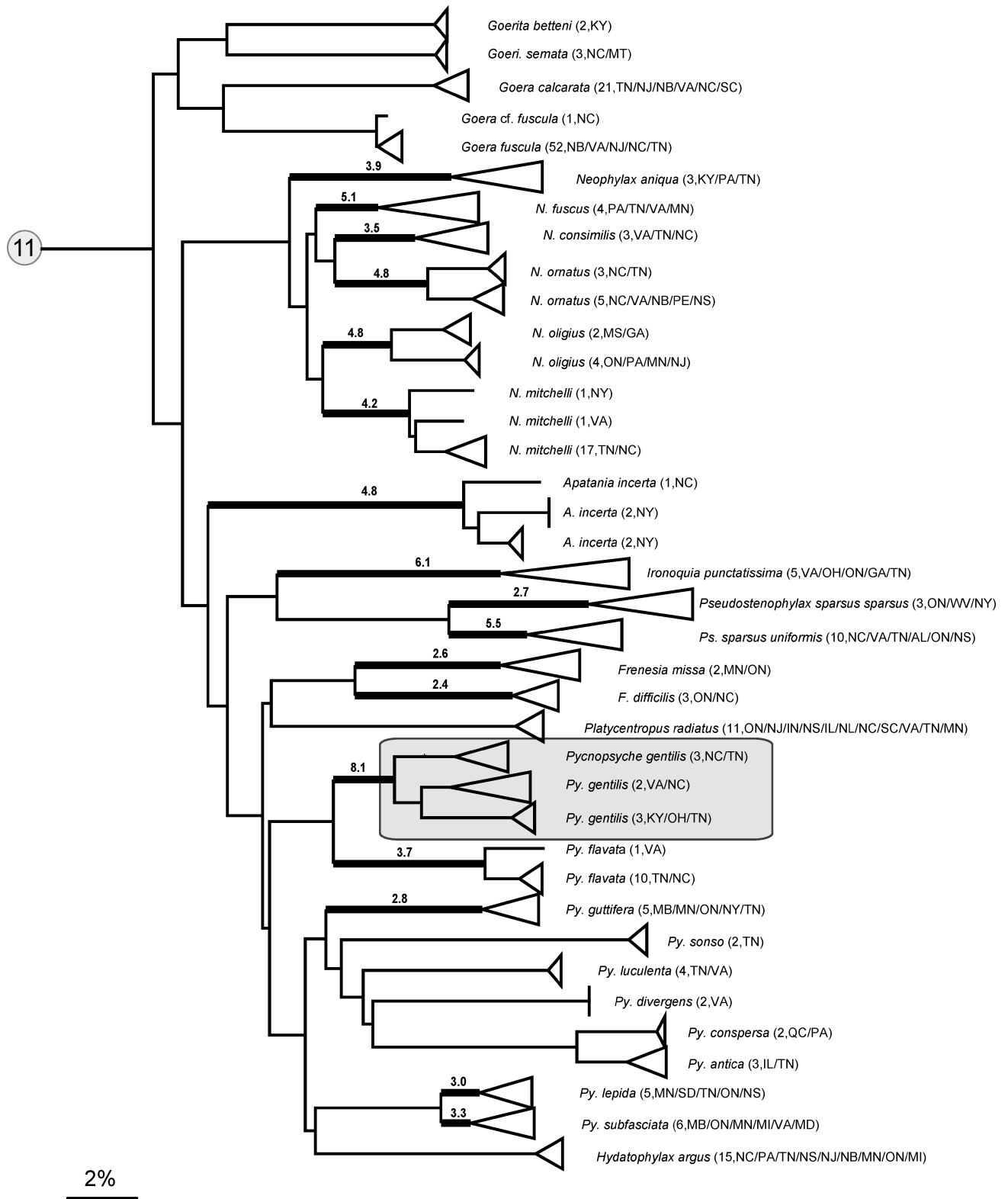


FIG. 12. Neighbor-Joining tree for clade 11. This clade includes members of families Goeridae, Uenoidae, Apataniidae, and Limnephilidae. Annotations follow those of Figs 4 and 5.

Institute of Ontario, for their assistance in the laboratory and field.

Literature Cited

- ALEXANDER, L. C., M. DELION, D. J. HAWTHORNE, AND W. O. LAMP. 2009. Mitochondrial lineages and DNA barcoding of closely related species in the mayfly genus *Ephemera* (Ephemeroptera:Ephemerellidae). *Journal of the North American Benthological Society* 28:584–595.
- BÁLINT, M., P. C. BARNARD, T. SCHMITT, L. UJVÁROSI, AND O. POPESCU. 2008. Differentiation and speciation in mountain streams: a case study in the caddisfly *Rhyacophila aquitanica* (Trichoptera). *Journal of Zoological Systematics and Evolutionary Research* 46:340–345.
- BALL, S. L., P. D. N. HEBERT, S. K. BURIAN, AND J. M. WEBB. 2005. Biological identifications of mayflies (Ephemeroptera) using DNA barcodes. *Journal of the North American Benthological Society* 24:508–524.
- DE MOOR, F. C., AND V. D. IVANOV. 2008. Global diversity of caddisflies (Trichoptera: Insecta) in freshwater. *Hydrobiologia* 595:393–407.
- DEWAARD, J. R., N. V. IVANOVA, M. HAJIBABAEI, AND P. D. N. HEBERT. 2008. Assembling DNA barcodes: analytical protocols. Pages 275–283 in C. C. Martin (editor). *Environmental genomics, methods in molecular biology*. Volume 410. Humana Press, Totowa, New Jersey.
- DEWALT, R. E., AND B. D. HEINOLD. 2005. Summer emerging Ephemeroptera, Plecoptera, and Trichoptera of Abrams Creek, Great Smoky Mountains National Park. *Proceedings of the Entomological Society of Washington* 107: 34–48.
- DEWALT, R. E., L. M. JACOBUS, AND W. P. MCCAFFERTY. 2007. Summer Ephemeroptera, Plecoptera, and Trichoptera from southwestern drainages in Great Smoky Mountains National Park, with additional Ephemeroptera records. *Proceedings of the Entomological Society of Washington* 109:136–154.
- EKREM, T., E. WILLASSEN, AND E. STUR. 2007. A comprehensive DNA sequence library is essential for identification with DNA barcodes. *Molecular Phylogenetics and Evolution* 43:530–542.
- ETNIER, D. A., C. R. PARKER, J. T. BAXTER, AND T. M. LONG. 2010. A review of the genus *Agapetus* Curtis (Trichoptera: Glossosomatidae) in eastern and central North America, with description of 12 new species. *Insecta Mundi* 0149:1–77.
- ETNIER, D. A., C. R. PARKER, AND I. C. STOCKS. 2004. A new species of *Rhyacophila* Pictet (Trichoptera: Rhyacophilidae) from Great Smoky Mountains National Park, with illustrations of females of *R. appalachia* Morse and Ross and *R. mycta* Ross. *Proceedings of the Entomological Society of Washington* 106:396–406.
- FLINT, O. S., R. L. HOFFMAN, AND C. R. PARKER. 2004. An annotated list of the caddisflies (Trichoptera) of Virginia: part I. Introduction and families of Annulipalpia and Spicipalpia. *Banisteria* 24:23–46.
- FLINT, R. F. 1971. *Glacial and Quaternary geology*. John Wiley and Sons, New York.
- FLOYD, M. A. 1995. Larvae of the caddisfly genus *Oecetis* (Trichoptera: Leptoceridae) in North America. *Bulletin of the Ohio Biological Survey, New Series* 10:1–85.
- FOLMER, O., M. BLACK, W. HOEH, R. LUTZ, AND R. VRIJENHOEK. 1994. DNA primers for amplification of mitochondrial cytochrome *c* oxidase subunit I from diverse metazoan invertebrates. *Molecular Marine Biology and Biotechnology* 3:294–299.
- GORDON, A. E. 1974. A synopsis and phylogenetic outline of the Nearctic members of *Cheumatopsyche*. *Proceedings of the Academy of Natural Sciences of Philadelphia* 126: 117–160.
- GRAF, W., V. LUBINI, AND S. PAULS. 2005. Larval description of *Drusus muelleri* McLachlan, 1868 (Trichoptera: Limnephilidae) with some notes on its ecology and systematic position within the genus *Drusus*. *Annales De Limnologie – International Journal of Limnology* 41:93–98.
- GRAF, W., S. U. PAULS, AND J. WARINGER. 2009a. The larva of *Rhyacophila ferox* Graf, 2006 (Trichoptera: Rhyacophilidae) from the Eastern Alps (Carinthia, Austria). *Aquatic Insects* 31:111–117.
- GRAF, W., J. WARINGER, AND S. U. PAULS. 2009b. A new feeding group within larval Drusinae (Trichoptera: Limnephilidae): the *Drusus alpinus* Group *sensu* Schmid, 1956, including larval descriptions of *Drusus franzi* Schmid, 1956, and *Drusus alpinus* (Meyer-Dur, 1875). *Zootaxa* 2031:53–62.
- HEBERT, P. D. N., J. R. DEWAARD, AND J. F. LANDRY. 2010. DNA barcodes for 1/1000 of the animal kingdom. *Biology Letters* 6:359–362.
- HEBERT, P. D. N., E. H. PENTON, J. M. BURNS, D. H. JANZEN, AND W. HALLWACHS. 2004. Ten species in one: DNA barcoding reveals cryptic species in the neotropical skipper butterfly *Astraptes fulgerator*. *Proceedings of the National Academy of Sciences of the United States of America* 101:14812–14817.
- HEBERT, P. D. N., S. RATNASINGHAM, AND J. R. DEWAARD. 2003. Barcoding animal life: cytochrome *c* oxidase subunit 1 divergences among closely related species. *Proceedings of the Royal Society of London Series B: Biological Sciences* 270:596–599.
- HEWITT, G. 2000. The genetic legacy of the Quaternary ice ages. *Nature* 405:907–913.
- HOGG, I. D., B. J. SMITH, J. C. BANKS, J. R. DEWAARD, AND P. D. N. HEBERT. 2009. Testing use of mitochondrial COI sequences for the identification and phylogenetic analysis of New Zealand caddisflies (Trichoptera). *New Zealand Journal of Marine and Freshwater Research* 43:1137–1146.
- IVANOVA, N. V., J. R. DEWAARD, AND P. D. N. HEBERT. 2006. An inexpensive, automation-friendly protocol for recovering high-quality DNA. *Molecular Ecology Notes* 6: 998–1002.
- JACKSON, J. K., AND V. H. RESH. 1992. Variation in genetic structure among populations of the caddisfly *Helicopsyche borealis* from three streams in northern California, U.S.A. *Freshwater Biology* 27:29–42.
- JACKSON, J. K., AND V. H. RESH. 1998. Morphologically cryptic species confound ecological studies of the caddisfly

- genus *Gumaga* (Trichoptera: Sericostomatidae) in northern California. *Aquatic Insects* 20:69–84.
- KING, R. A., D. S. READ, M. TRAUOGOTT, AND W. O. C. SYMONDSON. 2008. Molecular analysis of predation: a review of best practice for DNA-based approaches. *Molecular Ecology* 17:947–963.
- KIZIRIAN, D., AND M. A. DONNELLY. 2004. The criterion of reciprocal monophyly and classification of nested diversity at the species level. *Molecular Phylogenetics and Evolution* 32:1072–1076.
- LEHRIAN, S., S. U. PAULS, AND P. HAASE. 2009. Contrasting patterns of population structure in the montane caddisflies *Hydropsyche tenuis* and *Drusus discolor* in the Central European highlands. *Freshwater Biology* 54:283–295.
- LETUNIC, I., AND P. BORK. 2007. Interactive Tree Of Life (iTOL): an online tool for phylogenetic tree display and annotation. *Bioinformatics* 23:127–128.
- MORSE, J. C. 2010. Trichoptera world checklist. Entomology, Soils, and Plant Sciences Department, Clemson University, Clemson, South Carolina. (Available from: <http://entweb.clemson.edu/database/trichopt/index.html>)
- MORSE, J. C., B. P. STARK, AND W. P. McCAFFERTY. 1993. Southern Appalachian streams at risk – implications for mayflies, stoneflies, caddisflies, and other aquatic biota. *Aquatic Conservation: Marine and Freshwater Ecosystems* 3:293–303.
- MORSE, J. C., B. P. STARK, W. P. McCAFFERTY, AND K. J. TENNESSEN. 1998. Southern Appalachian and other southeastern streams at risk: implications for mayflies, dragonflies and damselflies, stoneflies, and caddisflies. Pages 17–24 in G. W. Benz and D. E. Collins (editors). *Aquatic fauna in peril: the southeastern perspective*. Southeast Aquatic Research Institute, Lenz Design and Communications, Decatur, Georgia.
- NICHOLS, B. J., AND K. R. LANGDON. 2007. The Smokies All Taxa Biodiversity Inventory: history and progress. *Southeastern Naturalist* 6:27–34.
- PARKER, C. R. 1998. A review of the genus *Goerita* (Trichoptera: Goeridae), with a description of a new species. *Insecta Mundi* 12:227–238.
- PARKER, C. R. 2000. *Neophylax kolodskii* (Trichoptera: Uenoidae), a new species from the Great Smoky Mountains National Park, USA. *Aquatic Insects* 22:271–274.
- PARKER, C. R., O. S. FLINT, L. M. JACOBUS, B. C. KONDRATIEFF, W. P. McCAFFERTY, AND J. C. MORSE. 2007. Ephemeroptera, Plecoptera, Megaloptera, and Trichoptera of Great Smoky Mountains National Park. *Southeastern Naturalist* 6:159–174.
- PAULS, S. U., R. J. BLAHNIK, X. ZHOU, C. T. WARDWELL, AND R. W. HOLZENTHAL. 2010. DNA barcode data confirm new species and reveal cryptic diversity in Chilean *Smicridea* (*Smicridea*) (Trichoptera:Hydropsychidae). *Journal of the North American Benthological Society* 29:1058–1074.
- PAULS, S. U., H. T. LUMBSCH, AND P. HAASE. 2006. Phylogeography of the montane caddisfly *Drusus discolor*: evidence for multiple refugia and periglacial survival. *Molecular Ecology* 15:2153–2169.
- PAULS, S. U., K. THEISSINGER, L. UJVAROSI, M. BÁLINT, AND P. HAASE. 2009. Patterns of population structure in two closely related, partially sympatric caddisflies in Eastern Europe: historic introgression, limited dispersal, and cryptic diversity. *Journal of the North American Benthological Society* 28:517–536.
- RIVERA, J., AND D. C. CURRIE. 2009. Identification of Nearctic black flies using DNA barcodes (Diptera: Simuliidae). *Molecular Ecology Resources* 9:224–236.
- ROKAS, A., AND P. ABBOT. 2009. Harnessing genomics for evolutionary insights. *Trends in Ecology and Evolution* 24:192–200.
- RUBINOFF, D., S. CAMERON, AND K. WILL. 2006. A genomic perspective on the shortcomings of mitochondrial DNA for “barcoding” identification. *Journal of Heredity* 97: 581–594.
- SCHMID, F. 1991. La sous-famille des Pseudosténophylacines (Trichoptera, Limnephilidae). *Bulletin de L’Institut Royal des Sciences Naturelles de Belgique, Entomologie, Supplement* 61:1–68.
- SHAN, L., L. YANG, AND B. WANG. 2004. Association of larval and adult stages of ecologically important caddisfly (Insecta: Trichoptera). *Zoological Research* 45:351–355.
- SMITH, M. A., J. J. RODRIGUEZ, J. B. WHITFIELD, A. R. DEANS, D. H. JANZEN, W. HALLWACHS, AND P. D. N. HEBERT. 2008. Extreme diversity of tropical parasitoid wasps exposed by iterative integration of natural history, DNA barcoding, morphology, and collections. *Proceedings of the National Academy of Sciences of the United States of America* 105:12359–12364.
- SMITH, M. A., D. M. WOOD, D. H. JANZEN, W. HALLWACHS, AND P. D. N. HEBERT. 2007. DNA barcodes affirm that 16 species of apparently generalist tropical parasitoid flies (Diptera, Tachinidae) are not all generalists. *Proceedings of the National Academy of Sciences of the United States of America* 104:4967–4972.
- SMITH, M. A., N. E. WOODLEY, D. H. JANZEN, W. HALLWACHS, AND P. D. N. HEBERT. 2006a. DNA barcodes reveal cryptic host-specificity within the presumed polyphagous members of a genus of parasitoid flies (Diptera: Tachinidae). *Proceedings of the National Academy of Sciences of the United States of America* 103:3657–3662.
- SMITH, P. J., S. M. McVEAGH, AND K. J. COLLIER. 2006b. Population-genetic structure in the New Zealand caddisfly *Orthopsyche fimbriata* revealed with mitochondrial DNA. *New Zealand Journal of Marine and Freshwater Research* 40:141–148.
- STONEBURNER, D. L. 1977. Preliminary observations of the aquatic insects of the Smoky Mountains: altitudinal zonation in the spring. *Hydrobiologia* 56:137–143.
- VALENTINI, A., C. MIQUEL, M. A. NAWAZ, E. BELLEMAIN, E. COISSAC, F. POMPANON, L. GIELLY, C. CRUAUD, G. NASCETTI, P. WINCKER, J. E. SWENSON, AND P. TABERLET. 2009a. New perspectives in diet analysis based on DNA barcoding and parallel pyrosequencing: the trnL approach. *Molecular Ecology Resources* 9:51–60.
- VALENTINI, A., F. POMPANON, AND P. TABERLET. 2009b. DNA barcoding for ecologists. *Trends in Ecology and Evolution* 24:110–117.

- WARINGER, J., W. GRAF, S. U. PAULS, H. VICENTINI, AND V. LUBINI. 2008. DNA based association and description of the larval stage of *Drusus melanchaetes* McLachlan, 1876 (Trichoptera: Limnephilidae: Drusinae) with notes on ecology and zoogeography. *Limnologica* 38:34–42.
- WHITLOCK, H. N., AND J. C. MORSE. 1994. *Ceraclea enodis*, a new species of sponge-feeding caddisfly (Trichoptera:Leptoceridae) previously misidentified. *Journal of the North American Benthological Society* 13:580–591.
- WHITWORTH, T. L., R. D. DAWSON, H. MAGALON, AND E. BAUDRY. 2007. DNA barcoding cannot reliably identify species of the blowfly genus *Protocalliphora* (Diptera: Calliphoridae). *Proceedings of the Royal Society of London Series B: Biological Sciences* 274:1731–1739.
- WIEMERS, M., AND K. FIEDLER. 2007. Does the DNA barcoding gap exist? – a case study in blue butterflies (Lepidoptera: Lycaenidae). *Frontiers in Zoology* 4:8.
- ZHOU, X. 2009. The larvae of Chinese Hydropsychidae (Insecta: Trichoptera), part I: *Arctopsyche shimianensis*, *Parapsyche* sp. A, and *Diplectronea obscura*. *Zootaxa* 2174: 1–17.
- ZHOU, X., S. J. ADAMOWICZ, L. M. JACOBUS, R. E. DEWALT, AND P. D. N. HEBERT. 2009. Towards a comprehensive barcode library for arctic life—Ephemeroptera, Plecoptera, and Trichoptera of Churchill, Manitoba, Canada. *Frontiers in Zoology* 6:30.
- ZHOU, X., L. M. JACOBUS, R. E. DEWALT, S. J. ADAMOWICZ, AND P. D. N. HEBERT. 2010. Ephemeroptera, Plecoptera, and Trichoptera fauna of Churchill (Manitoba, Canada): insights into biodiversity patterns from DNA barcoding. *Journal of the North American Benthological Society* 29: 814–837.
- ZHOU, X., K. M. KJER, AND J. C. MORSE. 2007. Associating larvae and adults of Chinese Hydropsychidae caddisflies (Insecta: Trichoptera) using DNA sequences. *Journal of the North American Benthological Society* 26:719–742.

Received: 5 February 2010

Accepted: 15 November 2010