



Wiesnerella denudata (Mitt.) Steph. (Marchantiales; Marchantiophyta) a rare species in the Western Ghats of India

Authors: Deepa, K. M., Mufeed, B., and Manju, C. N.

Source: Lindbergia, 2019(1) : 1-4

Published By: Dutch Bryological and Lichenological Society and Nordic Bryological Society

URL: <https://doi.org/10.25227/linbg.01106>

BioOne Complete (complete.BioOne.org) is a full-text database of 200 subscribed and open-access titles in the biological, ecological, and environmental sciences published by nonprofit societies, associations, museums, institutions, and presses.

Your use of this PDF, the BioOne Complete website, and all posted and associated content indicates your acceptance of BioOne's Terms of Use, available at www.bioone.org/terms-of-use.

Usage of BioOne Complete content is strictly limited to personal, educational, and non - commercial use. Commercial inquiries or rights and permissions requests should be directed to the individual publisher as copyright holder.

BioOne sees sustainable scholarly publishing as an inherently collaborative enterprise connecting authors, nonprofit publishers, academic institutions, research libraries, and research funders in the common goal of maximizing access to critical research.

***Wiesnerella denudata* (Mitt.) Steph. (Marchantiales; Marchantiophyta) a rare species in the Western Ghats of India**

K. M. Deepa, B. Mufeed and C. N. Manju

K. M. Deepa, B. Mufeed and C. N. Manju (manjucali@gmail.com), P G & Research Dept of Botany, The Zamorin's Guruvayurappan College, (affiliated to the University of Calicut), Kozhikode-14, Kerala, India.

Wiesnerella denudata (Mitt.) Steph., a complex thalloid liverwort in the family Wiesnerellaceae (Marchantiales), is reported as a new species to Peninsular India from the Anamudi Shola National park in the Western Ghats of Kerala. This species is easily confused with another thalloid liverwort, *Dumortiera hirsuta* (Sw.) Nees, due to similar morphological characters, especially size of thallus, colour and habit. *Wiesnerella denudata* is characterised by the presence of elevated air pores which can be seen with the help of a hand lens or even with naked eye, subsessile rotund male receptacle, raised female receptacle with deeply dissected carpocephalum and absence of pseudoperianth. A detailed account of the species along with photographs and SEM images of spores is provided here.

Keywords: distribution, liverwort, monotypic, thallus

Wiesnerellaceae Inoue, is a monotypic family within the order Marchantiales with a single species *Wiesnerella denudata* (Mitt.) Steph. (Iwatsuki and Mizutani 1972, Crandall-Stotler et al. 2009). This genus was first described by Schiffner (1896) with a single species *W. javanica* Schiffn. in the family *Marchantiaceae*. He described it as showing similarity with the thallus of *Lunularia cruciata* (L.) Dumort. ex Lindb. A difference between the two genera is the absence of crescent shaped gemmae cups in *Wiesnerella* Schiffn. However, Mitten (1861) had already described *Dumortiera denudata* Mitt. from east Himalaya (Borovichev and Bakalin 2014), which later became transferred to the genus *Wiesnerella* by Stephani (1899) as *Wiesnerella denudata* (Mitt.) Steph. Subsequently, *Wiesnerella javanica* (Mitt.) Steph. was synonymised with *W. denudata* (Inoue and Shimamura 1981). Campbell (1918) reported the occurrence of this species from the Indo-Malayan region and pointed out its similarity with *Dumortiera velutina* Schiffn. by shared characters such as the occurrence of dorsal air chambers with papillate photosynthetic cells, simple air pores and a symmetrically stellate carpocephalum. While unravelling the evolutionary history of Marchantiophyta by comparison of chloroplast (*rbcL*, *rps4* and *psbA*) nuclear (ribosomal LSU) and mitochondrial (*nad5*)

genes, Forrest et al. (2006) demonstrated that *Wiesnerella* phylogenetically has a sister relationship with *Targionia* L. Gao et al. (1981) described a second species of this genus *Wiesnerella fasciaria* C.Gao & G.C. Zhang, with a narrow thallus. Borovichev and Bakalin (2014) considered this species to be a synonym of *Wiesnerella denudata* and commented that the morphological features described by Gao et al. (1981) are habitat-induced variations.

Kashyap (1929) reported the occurrence of *Wiesnerella denudata* in Dalhousie of Himachal Pradesh in India, collected from a moist rock under water along the Khajiar road. *Wiesnerella denudata* is here reported as new to Peninsular India. During our surveys in Western Ghats for the past 15 years we have not located this species anywhere else than the present locality, the Anamudi Shola National Park in Western Ghats of Idukki district, where we collected it in few patches, so it appears to be rare.

Wiesnerella denudata (Mitt.) Steph., Sp. Hepat. 1: 154. 1899; Kashyap, Liverw. W. Himalayas 1: 40. 1929. *Dumortiera denudata* Mitt., J. Proc. Linn. Soc. 5: 125. 1861. *Wiesnerella javanica* Schiffn., Öst. Bot. Zeit. 46: 87. 1896. *W. fasciaria* C. Gao and K. C. Chang, Act. Bot. Yunnan. 3: 390. 1981.

Monocious, thallus light greenish, profusely branched and growing on wet rock along with *Dumortiera hirsuta* (Sw.) Nees. *Fissidens taxifolius* Hedw. and *Thuidium* sp. Thallus 2–3 × 0.8–1 cm, 1–many times dichotomously branched, margin undulate, light coloured, areolae very distinct on the dorsal surface of thallus which delimits the inside air chambers; each air chamber opens out through an

This work is licensed under the terms of a Creative Commons Attribution 4.0 International License (CC-BY) <<http://creativecommons.org/licenses/by/4.0/>>. The license permits use, distribution and reproduction in any medium, provided the original work is properly cited.

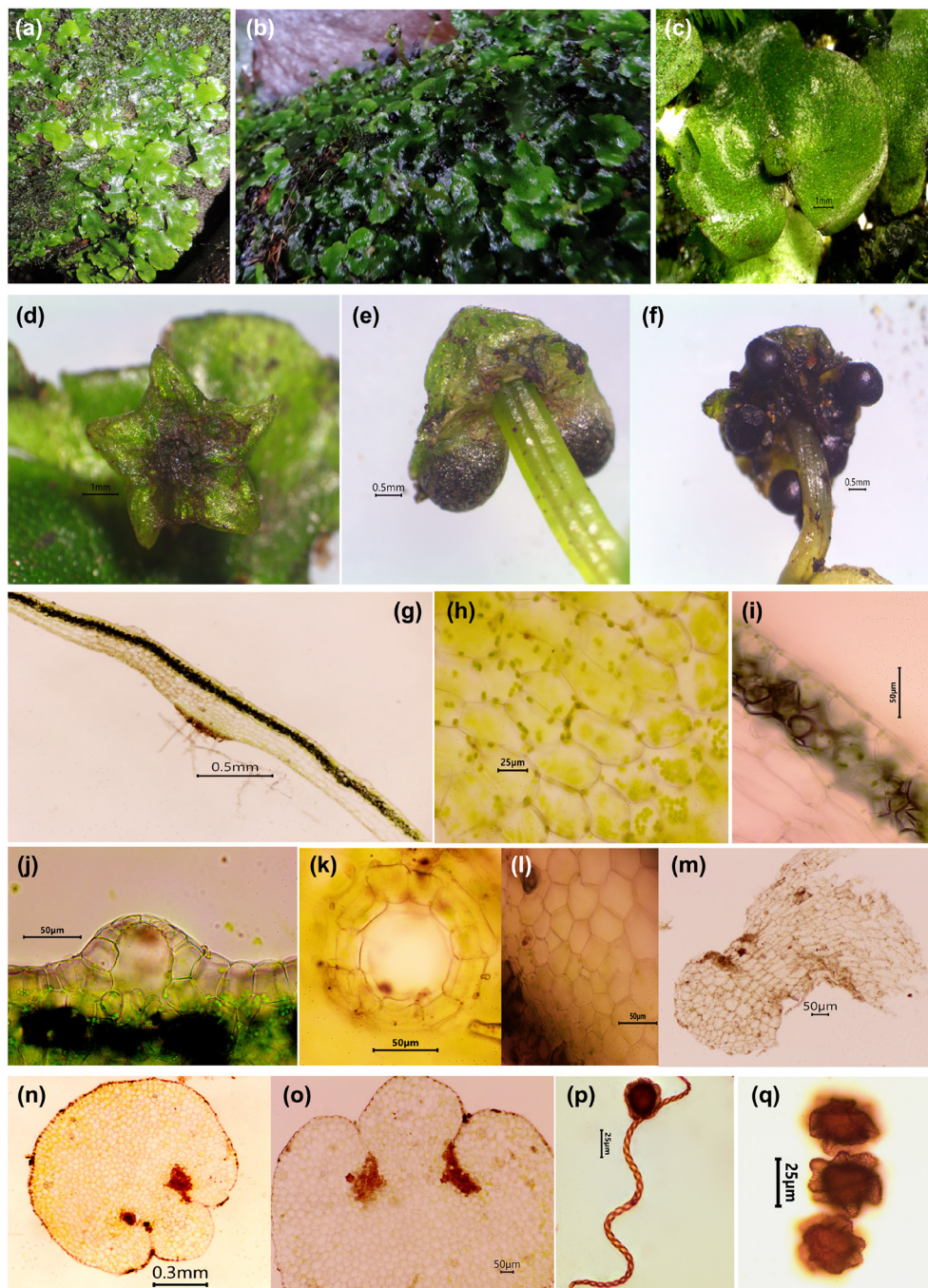


Figure 1. *Wiesnerella denudata*. (a) Plant habit. (b) Habit with sporophyte. (c) Thallus with female receptacle. (d) Female receptacle. (e) Receptacle with sporophyte side view. (f) Receptacle with sporophyte ventral view. (g) T.S. of thallus. (h) Epidermal cells. (i) Assimilatory region. (j) Air pore. (k) Air pore. (l) Storage region. (m) Scale. (n and o) Peduncle C.S. (p) Elater and spore. (q) Spores.

air pore, air pore simple and raised above the surface of the thallus at the centre of an areola, 33–38 μm wide, each pore surrounded by 4–5 rings of cells, with 8–10 cells per ring; dorsal epidermis unistratose, thin walled polygonal, subisodiametric parenchyma cells with 6–10 granulate oil bodies, 54–78 \times 25–35 μm , trigones absent; anatomically divided in to upper narrow photosynthetic region and lower broad storage region, photosynthetic region with unistratose photosynthetic chambers which contain rudimentary photosynthetic filaments one or two cells high, photosynthetic cells

19–21 \times 13–16 μm ; storage region broad, parenchymatous, occupying 4/5 part of the thallus along midrib and 2/3 part along the margin; rhizoids of both tuberculate and smooth walled types, aggregated along the midrib; ventral scales hyaline, in one row on either side of the midrib, delicate with a single appendage, scale appendage semicircular, hyaline in young thallus and purplish in older ones, mucilaginous papillae present along the margin of the scales, margin irregular; male receptacle sessile, cushion-like and covered by hyaline scales, formed at the tip of thallus or from behind the

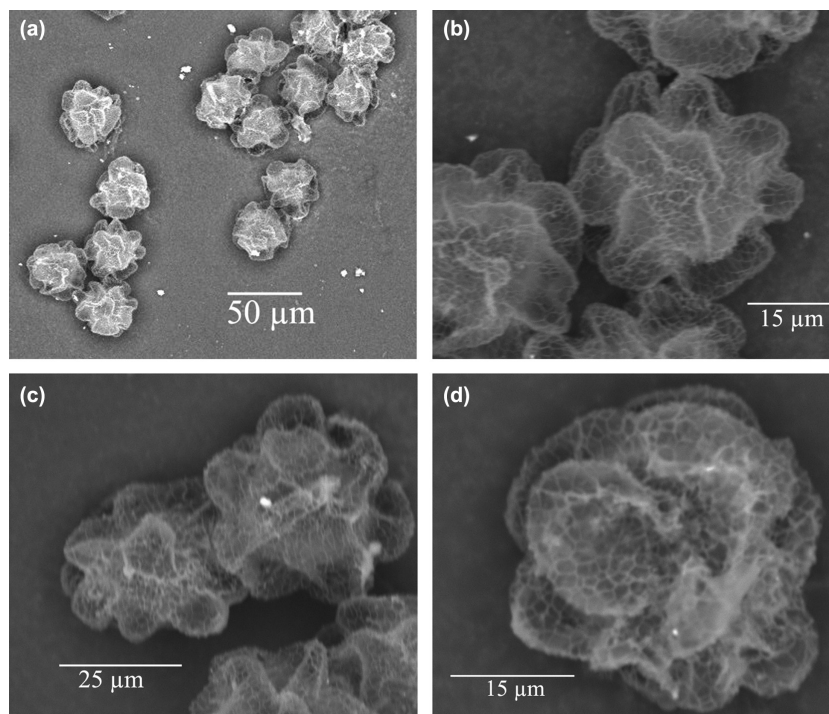


Figure 2. (a–d) SEM photos of spores of *Wiesnerella denudata*.

stalk of female receptacle; female receptacle terminal, raised, arising from a notch at apex of thallus; peduncle hyaline, 2–3 cm long, 1 mm diameter with two rhizoidal furrows; carpocephalum greenish, convex, deeply lobed with 4–6 lobes, each lobe contain a single sporophyte, pseudoperianth absent; capsule blackish, dehiscing through longitudinal valves; spores dark brownish, spherical, winged, wavy with large waves at distal end, exine is reticulate throughout the spore, 27.5–30.4 µm in diameter (without wing), wing 6.5–8 µm wide; elaters golden brown, bispiralled, 320 (± 20) µm long (Fig. 1, 2).

Habitat

In montane wet temperate forest locally known as shola forest, growing as a dense carpet on wet rock along stream side together with *Dumortiera hirsuta* (Sw.) Nees, *Thuidium* sp. and *Fissidens taxifolius* Hedw.

Distribution

Japan (Schiffner 1899), Indonesia: Tjibodason Mt. Gedeh (Campbell 1918), Papua New Guinea (Piippo 1990), China: Hunan, Yunnan, Xizang, Zhejiang, Sichuan (Koponen et al. 2000), Taiwan (Huang et al. 2012); Russia: Iturup and Shikotan Islands of South Kurils; Japan: Honshu; Korea (Borovichev and Bakalin 2014); Nepal (Pradhan and Joshi 2009); Bhutan (Long 2006); Hawaii (Campbell 1927); Afghanistan (Frey 1974); India- Himachal Pradesh: Dalhousie-Khajjiar road (Kashyap 1929, Bir and Chopra 1972.); Jammu and Kashmir (Sharma and Bhagath 2017); Sikkim (Inoue and Shimamura 1981). A map of the world distribution was given by Bischler (1998).

Specimens examined

Kerala (Idukki District) Mannavan shola, Anamudi shola NP, *Mufeed* 7205 (1900 m), 14.07.2017; *Mufeed* 7450 (1850 m) 09.11.2017 (ZGC).

Discussion

This species is of rare occurrence in Western Ghats. We could collect the plant from only one locality but with profuse growth. The plants flourish during June–July and sporophytes are produced during October–November. The SEM studies on spores shows similarity with Taiwanese plant, the spore size is almost identical and the exine is reticulate throughout the entire spore. Sharma and Bhagat (2017) in their studies on the reproductive biology of *Wiesnerella denudata* commented that the species does not undergo propagation by any vegetative or asexual means and that thalli with only female receptacles were recorded in the populations. They also found that the thalli were monoecious or dioecious and noted that the sexuality in some thalloid liverworts may change according to the habitat. Huang et al. (2012) and Chang and Wu (2006) have reported the genus to be dioecious. In the present locality we collected monoecious specimens, with antheridia and sporophytes on the same thallus. According to Laaka-Lindberg (2000), a higher proportion of dioecious species as compared to monoecious ones fail to produce sporophytes and commented that low spore production may be a possible cause of rarity for dioecious hepatics. Sharma and Bhagat (2017) commented that they observed numerous sporophytes. In the present collection also we could see a number of sporophyte.

Acknowledgements – The authors are grateful to the Kerala Forest department for giving permission to collect the specimens for research. We are thankful to the authorities of The Zamorin's Guruvayurappan College, Kozhikode for providing facilities. Third author acknowledge Kerala State Council for Science Technology and Environment (KSCSTE), Thiruvananthapuram for financial assistance in SRS scheme. We thank the staff members of CMPR, Kottakkal for their assistance in preparing the SEM photos.

References

- Bir, S. S. and Chopra, R. N. 1972. Thallose liverworts from Dalhousie, northwestern Himalayas. – *Bryologist* 75: 371–372.
- Bischler, H. 1998. Systematics and evolution of the genera of the Marchantiales. – *Bryophytorum Bibliotheca* 51: 1–201.
- Borovichev, E. A. and Bakalin, V. A. 2014. A survey of Marchantiales in the Russian far East II. Wiesnerellaceae – a new family for the Russian liverworts flora. – *Arctoa* 23: 1–4.
- Campbell, D. H. 1918. Studies on some east Indian Hepaticae. – *Ann. Bot.* 32: 319–338.
- Campbell, D. H. 1927. Collecting liverworts in Hawaii. – *Bryologist* 30: 97–101.
- Chang, Y. L. and Wu, P. C. 2006. Spore morphology of Chinese bryophytes. – Qingdao Publ. House, Qingdao.
- Crandall-Stotler, B., Stotler, R. E. and Long, D. G. 2009. Phylogeny and classification of the Marchantiophyta. – *Edinb. J. Bot.* 66: 155–198.
- Forrest, L. L., Davis, E. C., Long, D. G. et al. 2006. Unravelling the evolutionary history of the liverworts (Marchantiophyta): multiple taxa, genomes and analysis. – *Bryologist* 109: 202–334.
- Frey, W. 1974. Die Lebermoose des Iran und Afghanistans. – *Bryologist* 77: 48–56.
- Gao, C., Zhang, G. and Cao, T. 1981. Taxa nova Bryophytarum Tibetarum. – *Acta Bot. Yunnan* 3: 389–399.
- Huang, S.-F., Chang, C.-H., Liu, C.-C. et al. 2012. Notes on the *Wiesnerella denudata* (Mitt.) Steph. (Wiesnerellaceae, Hepaticae) in Taiwan. – *Taiwania* 57: 318–321.
- Inoue, H. and Shimamura, S. 1981. Embryology of *Wiesnerella denudata* (Mitt.) Steph. – *J. Hatt. Bot. Lab.* 50: 259–267.
- Iwatsuki, Z. and Mizutani, M. 1972. Coloured illustrations of bryophytes of Japan. – Koikusha Publ. Co., Osaka, Japan, in Japanese.
- Kashyap, S. R. 1929. Liverworts of western Himalayas and Panjab Plain, 1. – Univ. of Punjab, Lahore, India.
- Koponen, T., Enroth, J., Fang, Y.-M. et al. 2000. Bryophyte flora of Hunan Province, China. 1. Bryophytes from Mangshan Nature Reserve and Wulingyuan Global Cultural Heritage area. – *Ann. Bot. Fenn.* 37: 11–39.
- Laaka-Lindberg, S. 2000. Substrate preference and reproduction in *Lophozia silvicola* (Hepaticopsida) in southern Finland. – *Ann. Bot. Fenn.* 37: 85–93.
- Long, D. G. 2006. Notes on Himalayan Hepaticae 3: new records and extensions of range for some Himalayan Marchantiales. – *Cryptogamie Bryol.* 27: 119–129.
- Mitten, W. 1861. Hepaticae Indiae Orientale, an enumeration of the Hepaticae of the east Indies. – *J. Proc. Linn. Soc. Bot.* 5: 109–128.
- Piippo, S. 1990. Bryophyte flora of the Huon Peninsula, Papua New Guinea. XXXIV. Key to the genera of western Malanesian Hepaticae and Anthocerotae. – *Ann. Bot. Fenn.* 27: 13–18.
- Pradhan, N. and Joshi, S. D. 2009. Liverworts and hornworts of Nepal: a synopsis. – *Bot. Orientalis* 6: 69–75.
- Schiffner, V. 1896. *Wiesnerella*, eineneue Gattung der Marchantiaceen. – *Öst. Militärische Z.* 46: 82–88.
- Schiffner, V. 1899. Uebereinige Hepaticaeaus Japan. – *Öst. Bot. Z.* 49: 385–395.
- Sharma, A and Bhagat, M. 2017. Studies on the reproductive biology of *Wiesnerella denudata* (Mitt.) Steph. a rare hepatic. – *Trop. Plant Res.* 4: 396–400.
- Stephani, F. 1899. *Wiesnerella* Schiffn. – *Species Hepaticarum* I: 153–154, Geneva.