

## **Assessment and Simulation of Glacier Lake Outburst Floods for Longbasaba and Pida Lakes, China**

Authors: Wang Xin, Liu Shiyin, Guo Wanqin, and Xu Junli

Source: Mountain Research and Development, 28(3) : 310-317

Published By: International Mountain Society

URL: <https://doi.org/10.1659/mrd.0894>

---

BioOne Complete ([complete.BioOne.org](http://complete.BioOne.org)) is a full-text database of 200 subscribed and open-access titles in the biological, ecological, and environmental sciences published by nonprofit societies, associations, museums, institutions, and presses.

Your use of this PDF, the BioOne Complete website, and all posted and associated content indicates your acceptance of BioOne's Terms of Use, available at [www.bioone.org/terms-of-use](http://www.bioone.org/terms-of-use).

Usage of BioOne Complete content is strictly limited to personal, educational, and non-commercial use. Commercial inquiries or rights and permissions requests should be directed to the individual publisher as copyright holder.

---

BioOne sees sustainable scholarly publishing as an inherently collaborative enterprise connecting authors, nonprofit publishers, academic institutions, research libraries, and research funders in the common goal of maximizing access to critical research.

Wang Xin, Liu Shiyin, Guo Wanqin, and Xu Junli

# Assessment and Simulation of Glacier Lake Outburst Floods for Longbasaba and Pida Lakes, China

*Longbasaba and Pida lakes are two moraine-dammed lakes located at the headwaters of the Geiqu River, a tributary of the Pumqu River in the Chinese Himalayas, at an elevation of about 5700 m. The mini-*

*imum distance between the two lakes is 24 m and their difference in elevation is about 76 m. Breach risks were assessed on the basis of field surveys carried out in the summers of 2004, 2005, and 2006. Empirical formulae for breaching of moraine dams and the BREACH model for earthen dam failure were employed to simulate the breach properties and hydrograph of floods at the breaching site of the dam from the two lakes. The modeling showed that an outburst flood from Longbasaba and Pida lakes would last for about 5.5 hours and have a peak discharge of about  $3\text{--}5 \times 10^4 \text{ m}^3/\text{s}$  at about 1.8 hours after the beginning of the outburst.*

**Keywords:** Moraine-dammed lake; Pumqu River Basin; GLOF; assessment and simulation; Himalayas; China.

**Peer-reviewed:** October 2007 **Accepted:** July 2008

## Introduction

Glacier lake outburst floods (GLOFs) are increasingly threatening people and property and are studied intensively worldwide. Research on GLOFs mainly involves assessments and simulations (Wang and Liu 2007). As early as 1953, scientists in Peru developed an important index to determine a lake's stability (Carey 2005). After that, qualitative assessment indexes were provided based on the topographic setting and the mother glacier's lake characteristics (Liu and Sharma 1988; Yamada 1993); recently, semi-quantitative and quantitative breach risk assessment methods were used to determine the probability of a moraine-dammed lake failure based on the characteristics of breached lakes (Lu et al 1999; Walder et al 2003; Huggel et al 2004; Hubbard et al 2005; McKillop and Clague 2007a).

Besides these risk assessment methods, both empirical formulae and physically based process models were established to obtain moraine-dammed lake breaching properties. The empirical formulae mainly included the relations between lake depth and area, lake volume and area, peak discharge ( $Q_{\max}$ ), and lake volume or potential energy (Evans 1986; Costa and Schuster 1988; Walder and O'Connor 1997; Cenderelli and Wohl 2001;

Huggel et al 2002, 2004; McKillop and Clague 2007b). Physically based process models, such as DAMBRK, BREACH, and SOBEK, were also applied in the glacier lakes breach simulations (WECS 1987; Carrivick 2006; Bajracharya et al 2007). In recent years, the integration of remote sensing data with a GIS model has become an increasingly important means of simulating GLOFs (Huggel et al 2003; Carrivick 2006).

The present article first assesses the breach risks of two moraine-dammed lakes, Longbasaba and Pida lakes in the Chinese Himalayas. Then empirical formulae and the BREACH model are employed to simulate the outburst flood hydrograph at the breaching site of Longbasaba Lake, and the reliabilities of assessment and simulation results are discussed.

## Study area and problems

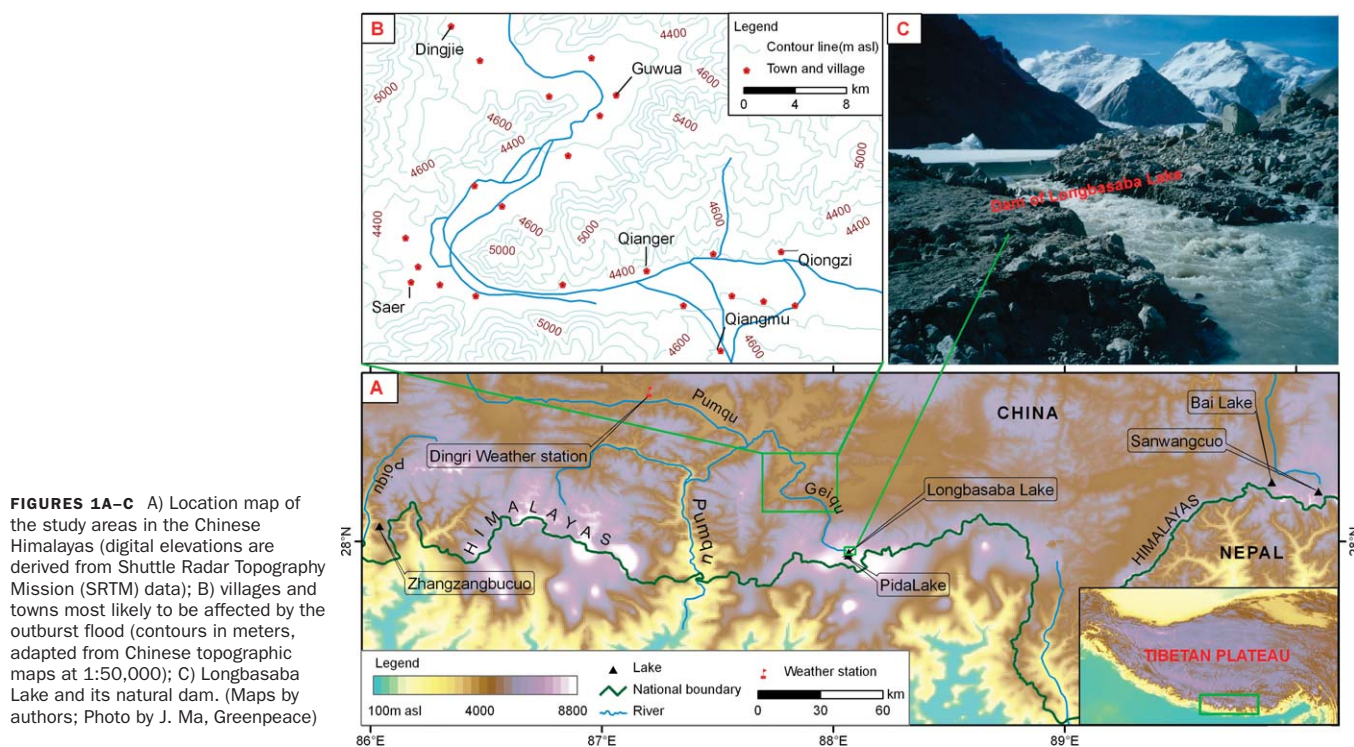
Longbasaba and Pida lakes are two moraine-dammed lakes at an altitude of about 5700 m, located at the headwaters of the Geiqu River, which is a tributary of the Pumqu in the Himalayas of China at latitude  $27^{\circ}56.67'N$  and longitude  $88^{\circ}04.21'E$  (Figure 1A). Longbasaba Lake has an area of  $1.08 \text{ km}^2$  and Pida Lake an area of  $0.97 \text{ km}^2$ ; both lakes had an average depth of 52 m in 2005. The minimum distance between the two lakes is 24 m, and the outflow of Pida Lake seeps directly into Longbasaba Lake, as the altitude of the former is 76 m higher than that of the latter.

Nearby villages first reported that Longbasaba and Pida lakes were in danger of failure in 2002. On the one hand, data from the Dingri Weather Station (Figure 1A) show that temperature increased at the rate of nearly  $0.04^{\circ}\text{C a}^{-1}$  from 1960 to 2004 in this region. Owing to climate warming, the areas of the Longbasaba and Kaer glaciers (the "mother glaciers" of the two lakes), which terminate in Longbasaba Lake for the first and Pida Lake for the second, decreased by 8.7% and 16.6%, respectively, from 1978 to 2005, while the areas of Longbasaba and Pida lakes increased by 140% and 194%, and retreat of the mother glaciers led directly to growth of the two lakes, as shown in Figure 2. On the other hand, if a GLOF had occurred at the two lakes, 23 towns and villages would have been endangered (Figure 1B), including more than 12,500 people in China, according to the Hazard Investigation Report on Longbasaba and Pida lakes issued by the Hydrological Department of the Tibet Autonomous Region in 2006. Therefore, the status of Longbasaba and Pida lakes is intensely monitored by the Chinese government and the villages in the vicinity.

## Methods and materials

Three types of survey were carried out for this study. First, field surveys were done to examine the area,





depth, moraine dams, mother glaciers, and drainage systems of Longbasaba and Pida lakes in the summers of 2004, 2005, and 2006. Second, samples of dam materials were taken to obtain the attribute parameters of unit weight, internal friction angle (by consolidated-drained triaxial compression test), and grain size of 50% finer (by sieve analysis) for the dams, in the State Key Laboratory of Cryosphere Science, Cold and Arid Regions Environmental and Engineering Research Institute. The cohesive strength was assumed to be zero, since the sample moraine was unconsolidated (Zhang and Liu 1994; Bajracharya et al 2007). Third, some documents, such as a topographic map at the scale of 1:50,000, TM images from 1989 and 2000, a 2005 ASTER image, and meteorological data for 1960–2004, were also collected.

The present article employs empirical formulae for breaching of moraine dams (Table 2) and the BREACH model for earthen dam failure to simulate the hydrograph of floods at the breach site of the two lakes. The empirical formulae are based either on the lake volume or on the potential energy of lake water, PE, which is the product of dam height, lake volume, and the specific weight of water. All the selected empirical formulae could be used for the moraine-dammed lakes.

A physically based mathematical model for earthen dam failures, the BREACH model, was developed by coupling the conservation of mass of the reservoir inflow, spillway outflow, and breach outflow with the sediment transport capacity of the unsteady uniform

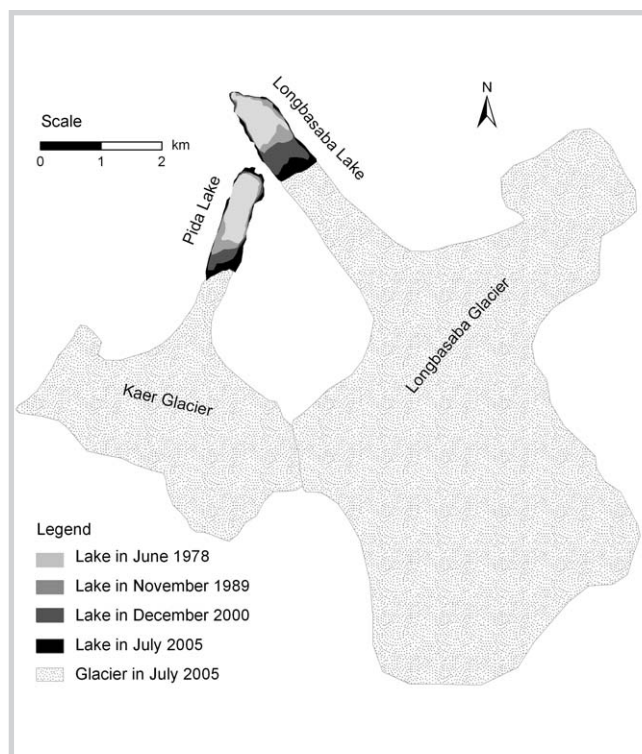


TABLE 1 Indicators to evaluate the breaching risk of Longbasaba and Pida lakes.

Assessment object	Variable/indicator	Value of most likely breaching	Reference	Rating for the 2 lakes' breaching risk	Data source
Stability of moraine dam	Top width of dam (m)	< 600	<i>Lu et al 1999</i>	< 163 / high	Field survey
	Distal flank steepness (°)	> 20	<i>Lu et al 1999</i>	22 / high	Field survey
	Ice-cored / ice-free areas of moraine	Ice core	<i>Richardson and Reynolds 2000</i>	Ice core exposure somewhere in dams / high	Field survey
	Ratio of dam width to height	0.1–0.2	<i>Huggel et al 2004</i>	0.16 / high	Field survey
State of mother glacier (from which the lakes formed)	Glacier area (km <sup>2</sup> )		<i>Lu et al 1999</i>	39.2 / high	ASTER in 2005
	Slope of glacier snout (°)	> 8	<i>Lu et al 1999</i>	10 / high	Topographic map 1:50,000
Climatic setting	Temperature and precipitation	Combination of high temperature–wetness or high temperature–dryness	<i>Lu et al 1999; Huggel et al 2004</i>	Temperature rising rate is 0.04°C a <sup>-1</sup> during 1960s–2004 / high	From Dingjie meteorological station
Lake water level and dam height relation	Ratio of freeboard to dam height	0	<i>WECS 1987</i>	0 in overtop flowing / high	Field survey
Lake and mother glacier relation	Lake–glacier proximity (m)	< 500	<i>Lu et al 1999</i>	0 / high	Field survey

flow along an erosion-formed breached channel (Fread 1991). The model uses equations of weir or orifice flow to simulate the outflow entering a channel that is gradually eroded through an earthen dam. Conservation of reservoir inflow, storage volume, and outflow determines the time-dependent reservoir water elevation which, along with the predicted breach bottom elevation, determines the head controlling the reservoir outflow. Breach enlargement is governed by the rate of erosion, which is a function of the breach bottom slope and depth of flow, and by the extent of collapse that occurs at the sides of the breach due to one or more sequential slope failures. Though the BREACH model was initially designed for an earthen dam, it has also been used extensively to predict the breaching properties of moraine-dammed lakes in the Himalayas (WECS 1987; Zhang and Liu 1994; Bajracharya et al 2007).

## Modeling and results

### Breaching risk assessment

We managed to assess the breaching risk (ie evaluate the probability of dam failure) of Longbasaba and Pida

lakes by field survey evaluation and through breaching risk assessment indexes. The field survey showed that the two lakes are at a high risk of failure in that (1) both have experienced overtopping flow, and the outside flanks of moraine dams were being eroded due to the increase of lake water (Figure 1C); (2) both mother glaciers directly terminate in the two lakes; the crevassed snouts and frequent small ice avalanches occurring in the mother glaciers indicate that more large ice avalanches are likely to occur in the near future, which makes the dams more likely to fail; (3) both dams are seeping, and seepage is likely to increase the probability of the dams' failure, as the moraine is unconsolidated in the dams.

The breaching risk assessment variables were selected under the following conditions: (1) the selected variables should provide the most likely breaching values, and (2) the selected indicators should either be summarized from breached moraine-dammed lakes in the Himalayas or be generally used in different regions. According to the two conditions, 11 risk assessment indicators were selected, suggesting that both lakes stayed at “high” risk of failure, as shown in Table 1.

**TABLE 2** Estimation of maximum discharge ( $Q_{\max}$ ) from the breach of Longbasaba and Pida lakes.  $V$  (lake volume) =  $1.066 \times 10^8 \text{ m}^3$ ;  $P_E$  (the product of dam height [m], lake volume [ $\text{m}^3$ ] and the specific weight of water [ $9800 \text{ N/m}^2$ ] =  $1.04 \times 10^{14}$ ); deviation =  $(Q_{\max} - \Sigma Q_{\max}/7) / \Sigma Q_{\max}/7$ .

Code	Formulae or models	References	Results ( $\text{m}^3/\text{s}$ )	Deviations
①	$Q_{\max} = 0.0048V^{0.896}$	Popov 1991	$7.5 \times 10^4$	59%
②	$Q_{\max} = 0.72V^{0.53}$	Evans 1986	$1.3 \times 10^4$	-73%
③	$Q_{\max} = 0.045V^{0.66}$	Walder and O'Connor 1997	$1.0 \times 10^4$	-79%
④	$Q_{\max} = 0.00077V^{1.017}$	Huggel et al 2002	$1.1 \times 10^5$	133%
⑤	$Q_{\max} = 0.00013P_E^{0.60}$	Costa and Schuster 1988	$3.4 \times 10^4$	-28%
⑥	$Q_{\max} = 0.063P_E^{0.42}$	Clague and Evans 2000	$4.9 \times 10^4$	4%
⑦	BREACH model	Fread 1991	$4.0 \times 10^4$	-15%

**TABLE 3** Parameters used in the BREACH model to simulate the Longbasaba and Pida lakes outburst flood.

Parameters of lakes		Shape parameters of dams <sup>b)</sup>		Attribute parameters of dams	
Item	Value	Item	Value	Item	Value
Total area ( $\text{km}^2$ )	2.05	Height (m)	100	Unit weight ( $\text{kg}/\text{m}^3$ )	1700
Total volume ( $\text{m}^3$ )	$1.066 \times 10^8$	Width (m)	163	Porosity ratio (%)	36
Average depth (m)	52	Top length (m)	388	Grain size of 50% finer (mm)	32.5
Inflow water of Longbasaba ( $\text{m}^3/\text{s}$ )	6.4 <sup>a)</sup>	Bottom length (m)	100	Internal friction angle ( $^\circ$ )	32
Inflow water of Pida ( $\text{m}^3/\text{s}$ )	2.8 <sup>a)</sup>	Slope of downstream face	1/4	Cohesive strength ( $\text{kg}/\text{m}^3$ )	0
		Slope of upstream face	1/4		

<sup>a)</sup>Averaged values from survey data collected on 1, 6, and 18 August 2005;

<sup>b)</sup>Values for Longbasaba Lake.

### Simulations for maximum discharge and breaching properties

The minimum distance between the two lakes is 24 m and all the outflow of Pida Lake seeps directly into Longbasaba Lake; as Pida Lake is 76 m higher than Longbasaba Lake, if Pida Lake fails, the outburst flood will fall into Longbasaba Lake and this sudden flood will destroy the dam of Longbasaba Lake immediately. Therefore, we simulated a GLOF for the two lakes under the "worst-case" scenario, ie Pida Lake breaches first and then Longbasaba Lake breaches almost immediately after.

The estimations of peak discharge ( $Q_{\max}$ ) from the two lakes' failure at the breach dam are shown in Table 2. The calculated values of  $Q_{\max}$  varied from  $1 \times 10^4$  to  $10^5 \text{ m}^3/\text{s}$ ; the average calculated  $Q_{\max}$  is  $4.7 \times 10^4 \text{ m}^3/\text{s}$  and deviations  $[(Q_{\max} - \Sigma Q_{\max}/7) / \Sigma Q_{\max}/7]$  vary from -79% to 133%.

The hydrograph of floods from the two lakes at the breaching site of the dam was simulated by a BREACH model, using the parameters in Table 3. The results indicate that the outburst flood at the breach of the dam will last for about 5.5 hours, reaching a peak discharge

of  $4.0 \times 10^4 \text{ m}^3/\text{s}$  about 1.8 hours after the beginning of the outburst (Figure 3). The final depth, top width, and bottom width of the breach at Longbasaba Lake dam would be about 100 m, 97 m, and 5 m respectively.

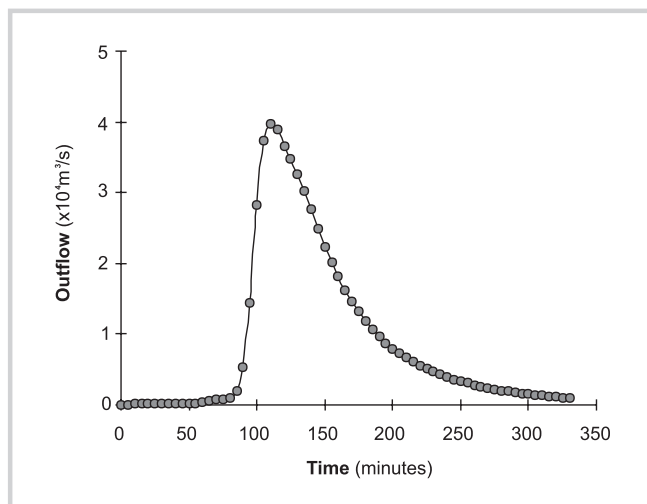
## Discussion

### Breaching risk assessment

The mechanism of a GLOF is varied and complex; sometimes an outburst flood happens as the result of more than one mechanism (Kershaw et al 2005). It is therefore necessary to examine the various characteristics of breaching risk assessment variables. The field investigations and indicators in Table 1 to evaluate the breaching risk of Longbasaba and Pida lakes include moraine dams, mother glaciers, and climatic setting. To evaluate the probability of an outburst flood, the stability of moraine dams is critical and should be emphasized (McKillop and Clague 2007a).

We evaluated the state of the dams from their shapes and material characteristics. Ice avalanches from mother glaciers are the mechanism most likely to make moraine dams fail in the Chinese Himalayas (Liu and

**FIGURE 3** Predicted outburst flood hydrograph for Longbasaba and Pida lakes at the breaching site of the dam, based on the BREACH model.



Sharma 1988). Climate warming may make moraine dams unsteady and accelerate the movement and melting rates of mother glaciers. The relations of lake freeboard and moraine dam height, and lake and mother glacier proximity were also examined. Thus, field investigations combined with the indicators examined various possible breaching risk aspects and can present an actual state of breaching risk for Longbasaba and Pida lakes.

#### Possible failure mechanisms

Several mechanisms, primarily large ice avalanche, seepage expansion, heavy melting of the mother glacier, the mother glacier sliding into the lake, and extremely high temperatures, were found in the failed moraine-dammed lakes in the Chinese Himalayas (Liu and Sharma 1988). According to a field survey, we think that a large ice avalanche generating shock waves and overtopping flow is the most likely mechanism to make Longbasaba and Pida lakes fail. As expressed above, the crevassed mother glacier snouts

and climate warming would enlarge the ice avalanche's size. Second, as the lakes' water levels continue to increase and the overtop flow continues eroding the moraine dams, the two lakes might also fail through overtopping flow incising and destroying the dams. Third, we temporarily conclude that the ice core and seepage is a less likely cause of breach, for there is no evidence that the ice cores have been shrinking and seepage was expanding in the summers of 2004, 2005, and 2006. Yet much attention must be paid to variations in the ice core and seepage in the dams as a result of climate warming.

#### Simulation of breaching results

The prediction results of  $Q_{\max}$  for the failure of Longbasaba and Pida lakes varied considerably with different formulae (Table 2). The deviations possibly resulted from original sample lakes of different formulae which were characterized by different attributes of location, area, moraine dam, and breaching mechanism. Theoretically, the greater the similarity between the sample moraine lakes in a formula and the concerned moraine lakes, the more reliable the results of computed  $Q_{\max}$  expected from the formulae. Generally speaking, if no further analysis of similarities between the sample lakes and the concerned lakes can be provided, the calculated results of  $Q_{\max}$  would be expected to be more reliable if the compounded variable, PE, is used than if the single variable, V, is used (McKillop and Clague 2007b).

Besides, we arbitrarily considered that the results computed from the BREACH model were relatively acceptable, as the model was set up on the basis of physical mechanisms under the condition of no further verifications. Furthermore, we selected two failed moraine-dammed lakes, Sangwangcuo and Zhangzangbucuo, which failed in 1954 and 1981 respectively, in the Himalayas of China (Figure 1A) as examples to validate the reliabilities of  $Q_{\max}$  computed using the models

**TABLE 4** Verifications of calculated  $Q_{\max}$  using two breached moraine-dammed lakes in the Himalayas, Sangwangcuo and Zhangzangbucuo.

Method <sup>a)</sup>	Sangwangcuo <sup>b)</sup>		Zhangzangbucuo <sup>b)</sup>	
	$Q_{\max}$ (m <sup>3</sup> /s)	Deviation (%) <sup>c)</sup>	$Q_{\max}$ (m <sup>3</sup> /s)	Deviation (%) <sup>c)</sup>
⑤	$1.04 \times 10^4$	-15	$1.06 \times 10^4$	-50
⑥	$2.15 \times 10^4$	44	$2.88 \times 10^4$	45
⑦	$1.2 \times 10^4$	0	$1.8 \times 10^4$	12
Indirect measurement	$1-1.3 \times 10^4$	—	$1.592 \times 10^4$	—

<sup>a)</sup> ⑤, ⑥, and ⑦ are models shown in Table 2;

<sup>b)</sup> Sangwangcuo:  $PE=1.5 \times 10^{13}J$ ; Zhangzangbucuo:  $PE=1.53 \times 10^{13}J$ ;

<sup>c)</sup> Deviation =  $(Q_{\max}$  of calculation -  $Q_{\max}$  of indirect measurement) / ( $Q_{\max}$  of calculation).

numbered ⑤, ⑥, and ⑦ in Table 2. The variables of  $Q_{\max}$  and PE of the two lakes were measured indirectly by Xu (1988) and Lu et al (1999). The verification results show that the prediction result using ⑤ is conservative, ⑥ is overestimated, and ⑦ is the closest in comparison to the indirect measurement values (Table 4). In summary, the models numbered ⑤, ⑥, and ⑦ in Table 2 can produce an acceptable prediction range of  $Q_{\max}$ .

$Q_{\max}$  sensitivity tests at the breaching site calculated using the BREACH model with the parameters of Longbasaba and Pida lakes were carried out. The results of the sensitivity analysis show that when the downstream and upstream dam slope changes from 1/3 to 1/6,  $Q_{\max}$  increases about 22%, and the time until maximum discharge is reached is postponed by about 30 minutes. If the maximum breaching depth were reduced by 20 m near the dam, then  $Q_{\max}$  would be reduced about 16–19%, and if the inflow increased 30%,  $Q_{\max}$  would increase 5%. In addition, changing the shape of lake area depth and the value of material parameters of the dam about 30% would usually influence  $Q_{\max}$  less than 5%. Thus, in the BREACH model, dam slope and maximum breaching depth are the most sensitive parameters to  $Q_{\max}$  at the breaching site (Figure 4).

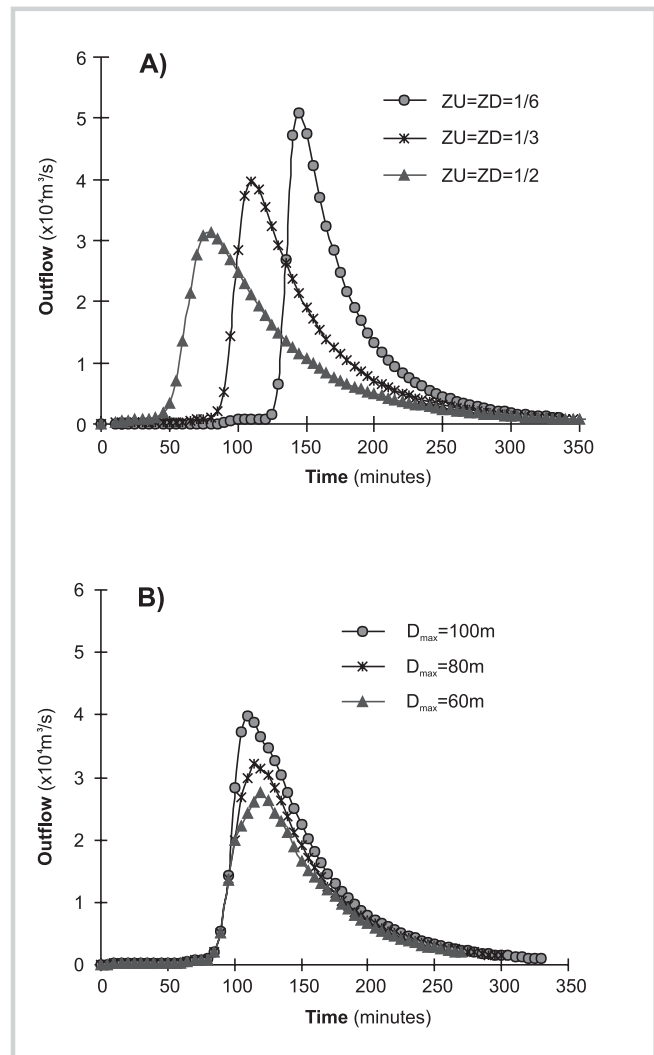
As far as the outburst flood hydrograph at the breaching site (Figure 3) is concerned, it seems that the hydrograph reaches its climax abruptly. We suggest two possible explanations for this abrupt shape of the hydrograph. First, the dam slope downstream of Longbasaba Lake (1/4) is somewhat less steep, which might make the outburst flood hydrograph sharper, as shown in Figure 4. Second, we tried to predict the magnitude of  $Q_{\max}$  under the most dangerous events, so the two lakes are supposed to fail completely and Pida Lake's outburst flood is assumed to join an outburst flood of Longbasaba Lake almost immediately; hence the two coalescing outburst floods would likely make the hydrograph climax steeper.

Furthermore, we compared our hypothetical results with results of investigations of the breached moraine-dammed lakes of Sangwangcuo (Zhang and Liu 1994) and Zhangzangbucuo (Xu 1988) in the Himalayas (Figure 1A), to verify the reliability of the failure properties of Longbasaba and Pida lakes predicted by the BREACH model. The results showed that the calculation values and measured values were close (Table 5). Therefore, the BREACH model is the preferred physically based model to predict the failure properties of Longbasaba and Pida lakes.

#### Feasible mitigation measures

To mitigate the immediate outburst flood hazard of Longbasaba and Pida lakes, it is estimated that the water level would have to decline by 20 m, ie at least

**FIGURE 4** A)  $Q_{\max}$  sensitivity tests at the breaching site to upstream/downstream slope of dam, ZU/ZD; B)  $D_{\max}$ : possible maximum outburst depth of breach near the dam.



$4 \times 10^7 \text{ m}^3$  of lake water would have to be drained out. Two alternative mitigation methods are proposed, based on field investigations. 1) *Siphoning*: it is estimated that at least 50 siphons with a length of 100 m and a diameter of 0.6 m would be needed to drain out  $4 \times 10^7 \text{ m}^3$  of lake water in one year. However, it is difficult to transport so many siphons over such a distance on high mountainous roads. 2) *Excavating*: there are two spillways on the left of Geiqu; one previous spillway is 306 m long from Pida Lake to Geiqu, and the other, current spillway is 452 m long, from Longbasaba Lake to Geiqu. The excavation method can be carried out first at the previous spillway from Pida Lake to Geiqu, then at the current spillway from Longbasaba Lake to Geiqu. Since the spillways are evidently depressed and composed with loose moraine material, it seems that excavating is somewhat more feasible than siphoning.

TABLE 5 Verifications of results calculated using the BREACH model, using two failed moraine-dammed lakes in the Himalayas, Sangwangcuo and Zhangzangbucuo.

Item	Sangwangcuo		Zhangzangbucuo	
	Investigation value <sup>a)</sup>	Calculation value	Investigation value <sup>a)</sup>	Calculation value
Final breach depth (m)	40	40	50	62
Peak discharge (m <sup>3</sup> /s)	10,000–13,000	12,000	15,920	18,000
Time of peak discharge reached (hr)	< 1	0.5	0.4	0.3
Time of outburst flood experienced (hr)	40	35	1	0.9
Top width of breach (m)	200–300	167	230	200
Bottom width of breach (m)	60	62	60	70

<sup>a)</sup> Source data from Zhang and Liu (1994);

<sup>b)</sup> Source data from Xu (1988).

## Conclusions

Field survey results and assessment indexes for moraine-dammed lake failure were employed to assess the failure risk of Longbasaba and Pida lakes. The assessment results show that both Longbasaba Lake and Pida Lake remain at high risk of failure, and that the excavation measure is the most feasible measure to mitigate the danger of immediate outburst flood of Longbasaba and Pida lakes. However, a water-flow regulated dam should be constructed to regulate the lake water flow with valves after the immediate excavation is finished.

Empirical formulae for peak discharge of moraine-dammed breaching and the BREACH model for earthen dam failures were used to simulate the peak discharge and outburst flood hydrograph at the breach site of Longbasaba and Pida lakes. By analyzing and verifying, we believe that an outburst flood from Longbasaba and Pida lakes would last about 5.5 hours and have a peak discharge of about  $3\text{--}5 \times 10^4 \text{ m}^3/\text{s}$  at 1.8 hours after the beginning of the outburst. The final depth, top width and bottom width of the breach at Longbasaba Lake dam would be about 100 m, 97 m and 5 m, respectively.

## ACKNOWLEDGMENTS

This work was supported by the Innovation Project of the Chinese Academy of Science (Grant No. KZCX2-YW-301), the National Natural Science Foundation of China (Grant No. 40801025), and the National Basic S&T Project of the Ministry of Science and Technology of China (Grant No. 2006FY110200). We wish to thank Prof. John Clague and an anonymous reviewer for making constructive suggestions.

## AUTHORS

### Wang Xin

Department of Geography, Hunan University of Science and Technology, Xiangtan 411201, China.  
xinwang\_hn@163.com

### Liu Shiyin, Guo Wanqin, and Xu Junli

State Key Laboratory of Cryosphere Science, Cold and Arid Regions Environmental and Engineering Research Institute, Chinese Academy of Science, Lanzhou 730000, China.  
liusy@ns.lzb.ac.cn (L.S.); guowq@lzb.ac.cn (G.W.); xujunli05@lzb.ac.cn (X.J.)

## REFERENCES

- Bajracharya SR, Mool PK, Shrestha BR.** 2007. *Impact of Climate Change on Himalayan Glaciers and Glacial Lakes*. Kathmandu, Nepal: International Centre for Integrated Mountain Development.
- Carey M.** 2005. Living and dying with glaciers: People's historical vulnerability to avalanches and outburst floods in Peru. *Global and Planetary Change* 47:122–124.
- Carrivick LJ.** 2006. Application of 2D hydrodynamic modeling to high-magnitude outburst floods: An example from Kverkfjöll, Iceland. *Journal of Hydrology* 321:187–199.
- Cenderelli AD, Wohl EE.** 2001. Peak discharge estimates of glacial-lake outburst floods and "normal" climatic floods in the Mount Everest region, Nepal. *Geomorphology* 40:57–90.
- Clague JJ, Evans SG.** 2000. A review of catastrophic drainage of moraine-dammed lakes in British Columbia. *Quaternary Science Reviews* 19:1763–1783.
- Costa JE, Schuster RL.** 1988. The formation and failure of natural dams. *Geological Society of America Bulletin* 100:1054–1068.
- Evans SG.** 1986. The maximum discharge of outburst floods caused by the breaching of man-made and natural dams. *Canadian Geotechnical Journal* 23:385–387.
- Fread DL.** 1991. *BREACH: An Erosion Model for Earthen Dam Failures*. Silver Spring, MD: Hydrologic Research Laboratory, National Weather Service, National Oceanic and Atmospheric Administration.
- Hubbard B, Heald A, Reynolds JM, Quincey D, Richardson SD, Zapata Luyo M, Santillan Portilla N, Hambrey MJ.** 2005. Impact of a rock avalanche on



a moraine-dammed proglacial lake: Laguna Safuna Alta, Cordillera Blanca, Peru. *Earth Surface Processes and Landforms* 30:1251–1264.

**Huggel C, Haeblerli W, Käab A, Bieri D, Richardson S.** 2004. An assessment procedure for glacial hazards in the Swiss Alps. *Canadian Geotechnical Journal* 41:1068–1083.

**Huggel C, Käab A, Haeblerli W, Kruppenacher B.** 2003. Regional-scale GIS models for assessment of hazards from glacier lake outbursts: Evaluation and application in the Swiss Alps. *Natural Hazards and Earth System Sciences* 3:647–662.

**Huggel C, Käab A, Haeblerli W, Teysseire P, Paul F.** 2002. Remote sensing based assessment of hazards from glacier lake outbursts: A case study in the Swiss Alps. *Canadian Geotechnical Journal* 39:316–330.

**Kershaw JA, Clague JJ, Evans SG.** 2005. Geomorphic and sedimentological signature of a two-phase outburst flood from moraine-dammed Queen Bess Lake, British Columbia, Canada. *Earth Surface Processes and Landforms* 30:1–25.

**Liu C, Sharma CK.** 1988. *Report on First Expedition to Glaciers and Glacier Lakes in the Pumqu (Arun) and Poiqu (Bhote-Sunkosi) River Basin, Xizang (Tibet), China.* Beijing, China: Science Press.

**Lu R, Tang B, Li D.** 1999. Introduction of debris flow resulted from glacial lakes failed. In: Lu R, Tang B, Zhu P, editors. *Debris Flow and Environment in Tibet* [in Chinese]. Chengdu, China: Sichuan University Publishing House, pp 69–105.

**McKillop RJ, Clague JJ.** 2007a. Statistical, remote sensing-based approach for estimating the probability of catastrophic drainage from moraine-dammed lakes in southwestern British Columbia. *Global and Planetary Change* 56:153–171.

**McKillop RJ, Clague JJ.** 2007b. A procedure for making objective preliminary

assessments of outburst flood hazard from moraine-dammed lakes in southwestern British Columbia. *Natural Hazards* 41:131–157.

**Popov N.** 1991. Assessment of glacial debris flow hazard in the north Tien-Shan. In: Proceedings of the Soviet–China–Japan Symposium and Field Workshop on Natural Disasters, 2–17 September 1991, pp 384–391.

**Richardson SD, Reynolds JM.** 2000. Degradation of ice-cored moraine dam: Implications for hazard development. In: Nakawo M, Raymond CF, Fountain A, editors. *Debris-Covered Glaciers.* IAHS Publication 264. Wallingford, United Kingdom: International Association of Hydrological Sciences, pp 187–197.

**Walder JS, O'Connor JE.** 1997. Methods for predicting peak discharges of floods caused by failure of natural and constructed earthen dams. *Water Resources Research* 33:2337–2348.

**Walder JS, Watts P, Sorensen OE, Janssen K.** 2003. Water waves generated by subaerial mass flows. *Journal of Geophysical Research* 108(B5): 2236–2255.

**Wang X, Liu S.** 2007. An overview of researches on moraine-dammed lake outburst flood hazards [in Chinese with English abstract]. *Journal of Glaciology and Geocryology* 29(4):62–66.

**WECS [Water and Energy Commission Secretariat].** 1987. Study of glacier lake outburst floods in Nepal Himalaya. In: WECS, editor. *WECS Interim Report.* Kathmandu, Nepal: WECS.

**Xu D.** 1988. Characteristics of debris flow caused by outburst of glacier lake in Boqu River, Xizang, China. *GeoJournal* 17(4):569–580.

**Yamada T.** 1993. *Glacier Lakes and Their Outburst Floods in the Nepal Himalaya.* Kathmandu, Nepal: Water and Energy Commission Secretariat.

**Zhang Z, Liu M.** 1994. Analysis of influence of Glacier Lake Outburst Flood to Manla reservoir and the application of BREACH model [in Chinese with English abstract]. *Journal of Waterway and Harbour* 2:10–15.