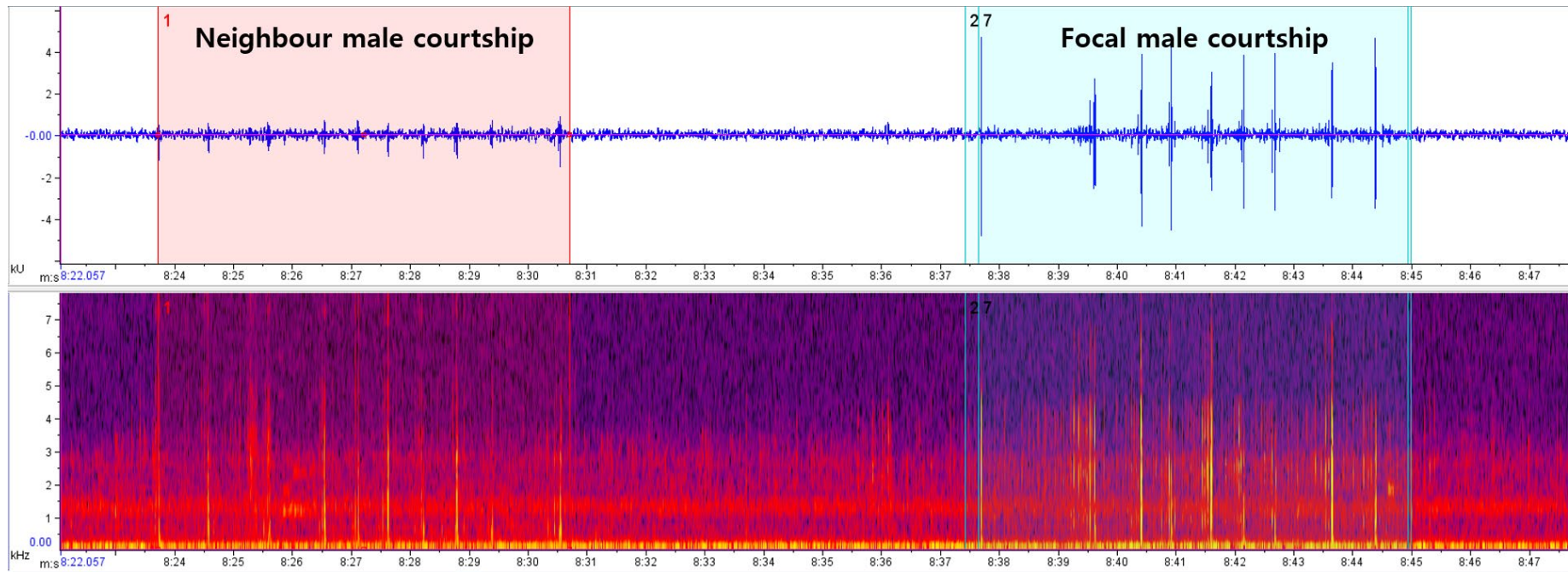
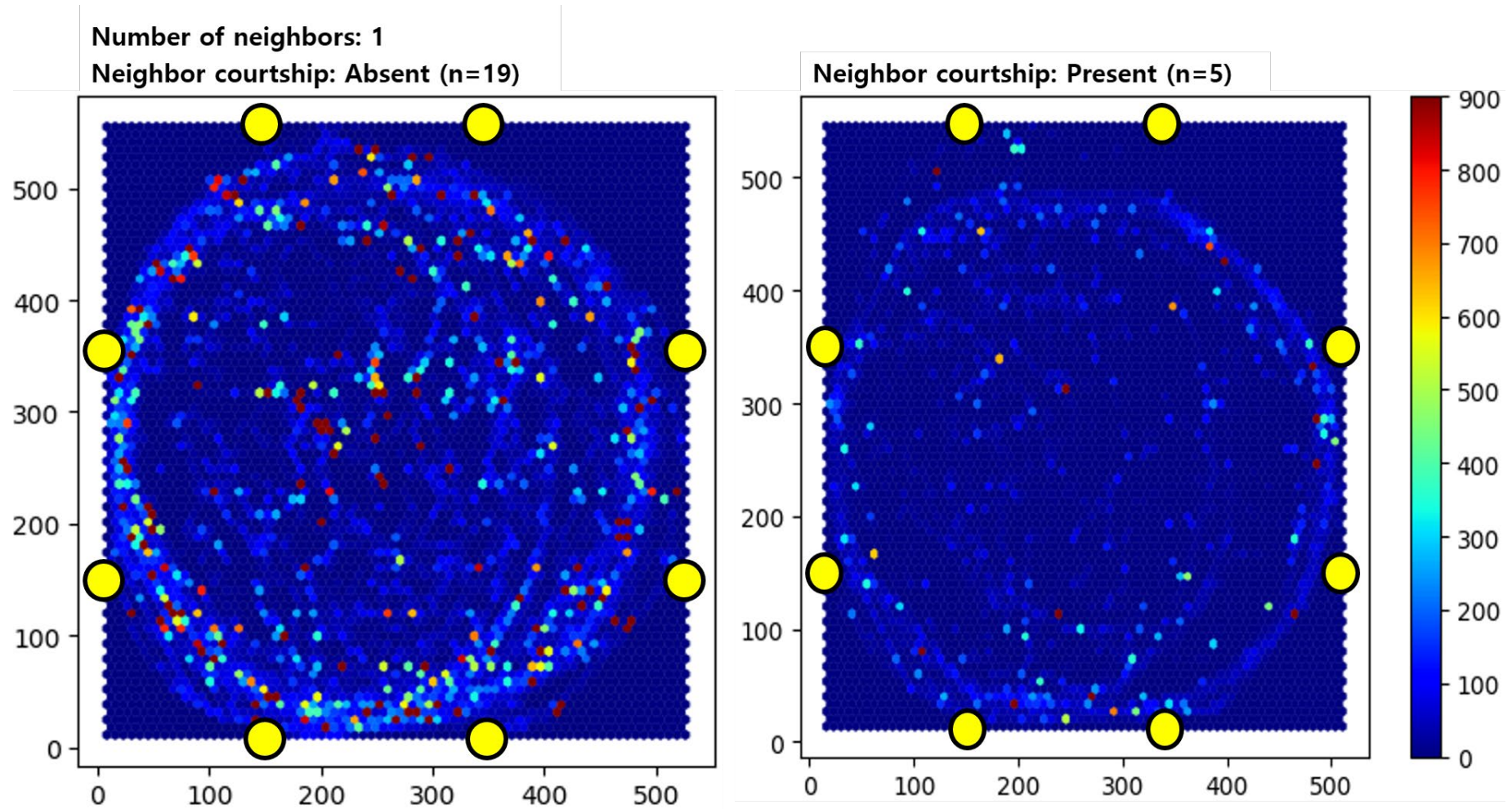


Choi, N. and Hebets, E. A. 2021. The effects of conspecific male density on the reproductive behavior of male *Schizocosa retrorsa* (Banks, 1911) wolf spiders (Araneae: Lycosidae). *Journal of Arachnology* 49(3):347-357.

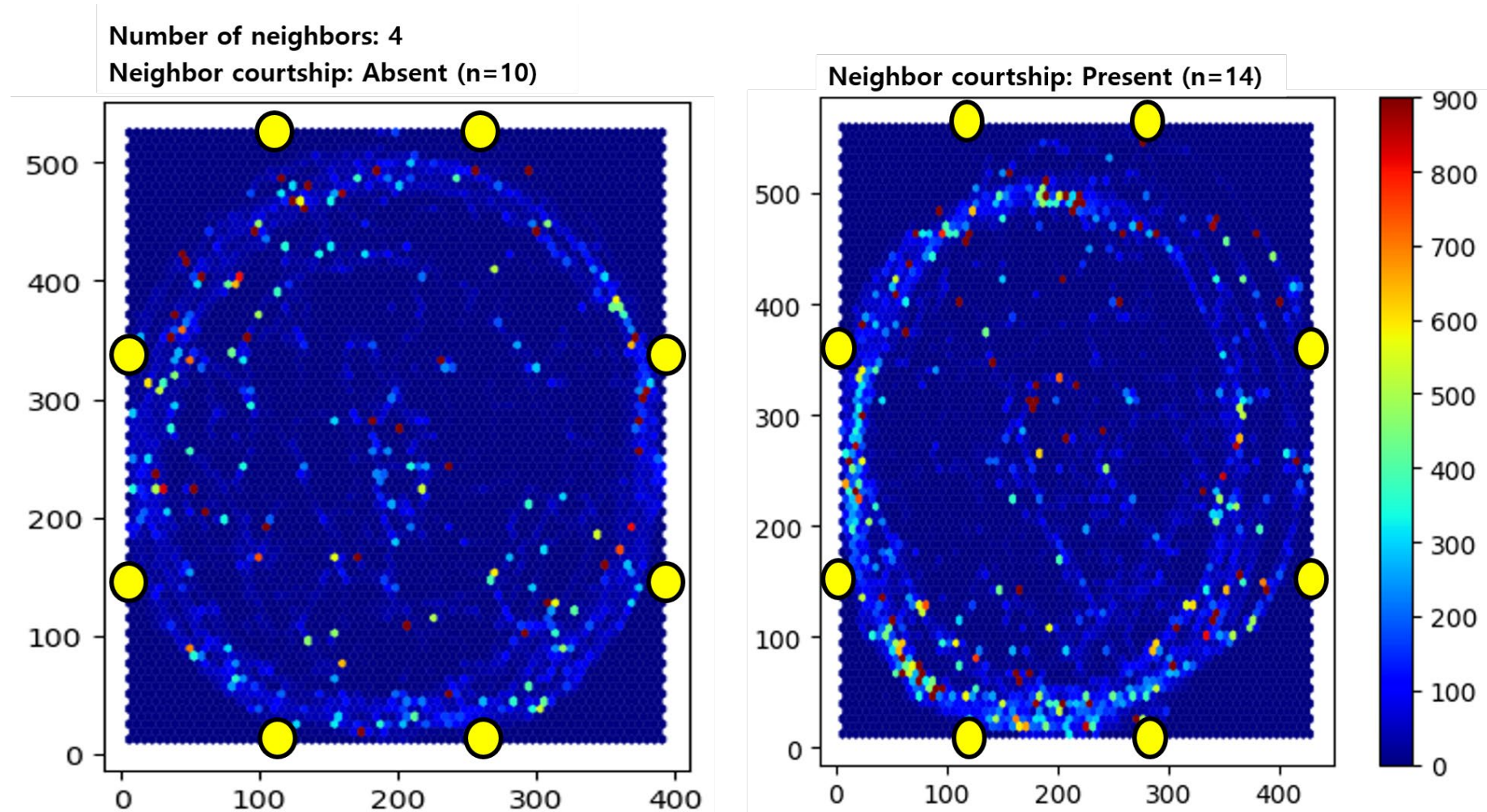
Supplementary Figure S1.—Waveform and spectrogram of courtship signals of neighbor (1) and focal (2) *S. retrorsa* males. The clip was recorded in the 4-neighbor trial of individual r0119.



Supplementary Figure S2.—Heatmap of the focal males' movement during the 1-neighbor trial when neighbor males did not (Left, $n=19$) and did court (Right, $n=5$). Yellow circles are the location of neighbor males. The spending time at each grid (0.1 seconds) is color-coded (Blue, 0 – Red, 90 seconds).



Supplementary Figure S3.— Heatmap of the focal males' movement during the 4-neighbor trial when neighbor males did not (Left, n=10) and did court (Right, n=14). Yellow circles are the location of neighbor males. The spending time at each grid (0.1 seconds) is color-coded (Blue, 0 – Red, 90 seconds).



Supplementary Figure S4.—Heatmap of the focal males' movement during the 8-neighbor trial when neighbor males did not (Left, $n=19$) and did court (Right, $n=5$). Yellow circles are the location of neighbor males. The spending time at each grid (0.1 seconds) is color-coded (Blue, 0 – Red, 30 seconds).

