

APPENDIX 1

Table listing all the root-tips included in this study. Ordered by accession number. Plant numbers are specific only in combination with cliff and plant species. The plant genera are *Dryas* and *Salix*. MOTU = molecular operational taxonomic unit.

Access. no.	Species_MOTU	Cliff	Year	Season	Plant sp.	Plant no.
FM202730	<i>Toментella</i> sp. 6	D	2007	Spring	<i>D. octopetala</i>	2
FM202731	<i>Toментella</i> sp. 6	D	2007	Spring	<i>D. octopetala</i>	2
FM202732	<i>Toментella</i> sp. 13	D	2007	Spring	<i>D. octopetala</i>	2
FM202733	<i>Toментella</i> sp. 6	D	2007	Spring	<i>D. octopetala</i>	2
FM202734	<i>Toментella</i> sp. 13	D	2007	Spring	<i>D. octopetala</i>	3
FM202735	<i>Cenocccum geophilum</i>	B	2007	Spring	<i>D. octopetala</i>	3
FM202736	<i>Toментella</i> cf. <i>viridula</i>	B	2007	Spring	<i>D. octopetala</i>	3
FM202737	<i>Cortinarius decipiens</i> s.l.	R	2007	Spring	<i>D. octopetala</i>	1
FM202738	<i>Inocybe</i> aff. <i>rufuloides</i> 1	R	2007	Spring	<i>D. octopetala</i>	1
FM202739	<i>Inocybe</i> aff. <i>rufuloides</i> 1	R	2007	Spring	<i>D. octopetala</i>	1
FM202740	<i>Toментella</i> sp. 1	B	2007	Spring	<i>D. octopetala</i>	1
FM202741	<i>Cenocccum geophilum</i>	B	2007	Spring	<i>D. octopetala</i>	1
FM202742	<i>Toментella</i> aff. <i>ramossisima</i>	D	2007	Spring	<i>D. octopetala</i>	1
FM202743	<i>Toментella</i> aff. <i>ramossisima</i>	D	2007	Spring	<i>D. octopetala</i>	1
FM202744	<i>Toментella</i> cf. <i>badia</i>	F	2007	Spring	<i>D. octopetala</i>	1
FM202745	<i>Toментella</i> aff. <i>ramossisima</i>	F	2007	Spring	<i>D. octopetala</i>	1
FM202746	<i>Sebacina</i> sp. 16	F	2007	Spring	<i>D. octopetala</i>	1
FM202747	<i>Toментella</i> sp. 7	E	2007	Spring	<i>D. octopetala</i>	1
FM202748	<i>Cenocccum geophilum</i>	E	2007	Spring	<i>D. octopetala</i>	1
FM202749	<i>Toментella</i> sp. 7	E	2007	Spring	<i>D. octopetala</i>	1
FM202750	<i>Toментella</i> aff. <i>stuposa</i>	E	2007	Spring	<i>D. octopetala</i>	1
FM202751	<i>Cenocccum geophilum</i>	F	2007	Spring	<i>D. octopetala</i>	2
FM202752	<i>Toментella</i> sp. 8	F	2007	Spring	<i>D. octopetala</i>	2
FM202753	<i>Cenocccum geophilum</i>	R	2007	Spring	<i>D. octopetala</i>	2
FM202754	<i>Cenocccum geophilum</i>	R	2007	Spring	<i>D. octopetala</i>	2
FM202755	<i>Thelephora</i> sp. 3	R	2007	Spring	<i>D. octopetala</i>	2
FM202756	<i>Cenocccum geophilum</i>	R	2007	Spring	<i>D. octopetala</i>	2
FM202757	<i>Toментella</i> sp. 9	E	2007	Spring	<i>D. octopetala</i>	2
FM202758	<i>Toментella</i> sp. 7	E	2007	Spring	<i>D. octopetala</i>	2
FM202759	<i>Inocybe</i> cf. <i>rufuloides</i> 2	E	2007	Spring	<i>D. octopetala</i>	2
FM202760	<i>Cortinarius</i> aff. <i>casimiri</i>	R	2007	Spring	<i>D. octopetala</i>	5
FM202761	<i>Cortinarius</i> aff. <i>casimiri</i>	R	2007	Spring	<i>D. octopetala</i>	5
FM202762	<i>Cortinarius</i> aff. <i>casimiri</i>	R	2007	Spring	<i>D. octopetala</i>	5
FM202763	<i>Sebacina</i> sp. 7	R	2007	Spring	<i>D. octopetala</i>	5
FM202764	<i>Cenocccum geophilum</i>	D	2007	Spring	<i>D. octopetala</i>	5
FM202765	<i>Toментella</i> sp. 13	D	2007	Spring	<i>D. octopetala</i>	5
FM202766	<i>Toментella</i> sp. 13	D	2007	Spring	<i>D. octopetala</i>	5
FM202767	<i>Toментella</i> sp. 13	D	2007	Spring	<i>D. octopetala</i>	5
FM202768	<i>Cortinarius</i> aff. <i>sanguineus</i>	R	2007	Spring	<i>D. octopetala</i>	3
FM202769	<i>Cortinarius</i> aff. <i>sanguineus</i>	R	2007	Spring	<i>D. octopetala</i>	3
FM202770	<i>Cenocccum geophilum</i>	R	2007	Spring	<i>D. octopetala</i>	3
FM202771	<i>Toментella</i> sp. 9	E	2007	Spring	<i>D. octopetala</i>	3
FM202772	<i>Sebacina</i> sp. 1	F	2007	Spring	<i>D. octopetala</i>	3
FM202773	<i>Sebacina</i> sp. 1	F	2007	Spring	<i>D. octopetala</i>	3
FM202774	<i>Toментella</i> aff. <i>ramossisima</i>	F	2007	Spring	<i>D. octopetala</i>	3
FM202775	<i>Sebacina</i> sp. 1	F	2007	Spring	<i>D. octopetala</i>	3
FM202776	<i>Cenocccum geophilum</i>	R	2007	Spring	<i>D. octopetala</i>	4
FM202777	<i>Sebacina</i> sp. 15	R	2007	Spring	<i>D. octopetala</i>	4
FM202778	<i>Toментella</i> sp. 12	B	2007	Spring	<i>D. octopetala</i>	4
FM202779	<i>Thelephora</i> sp. 1	B	2007	Spring	<i>D. octopetala</i>	4
FM202780	<i>Cenocccum geophilum</i>	B	2007	Spring	<i>D. octopetala</i>	4
FM202781	<i>Toментella</i> sp. 1	F	2007	Spring	<i>D. octopetala</i>	4
FM202782	<i>Toментella</i> sp. 1	F	2007	Spring	<i>D. octopetala</i>	4
FM202783	<i>Toментella</i> sp. 1	F	2007	Spring	<i>D. octopetala</i>	4
FM202784	<i>Toментella</i> sp. 13	D	2007	Spring	<i>D. octopetala</i>	4
FM202785	<i>Toментella</i> sp. 13	D	2007	Spring	<i>D. octopetala</i>	4
FM202786	<i>Toментella</i> sp. 13	D	2007	Spring	<i>D. octopetala</i>	4
FM202787	<i>Toментella</i> aff. <i>stuposa</i>	E	2007	Spring	<i>D. octopetala</i>	4
FM202788	<i>Cenocccum geophilum</i>	E	2007	Spring	<i>D. octopetala</i>	4
FM202789	<i>Sebacina</i> sp. 14	B	2007	Spring	<i>D. octopetala</i>	5
FM202790	<i>Cenocccum geophilum</i>	B	2007	Spring	<i>D. octopetala</i>	5

APPENDIX 1

Continued.

Access. no.	Species_MOTU	Cliff	Year	Season	Plant sp.	Plant no.
FM202791	<i>Cenocccum geophilum</i>	B	2007	Spring	<i>D. octopetala</i>	5
FM202792	<i>Tomentella</i> sp. 10	D	2007	Autumn	<i>D. octopetala</i>	1
FM202793	<i>Tomentella</i> sp. 11	R	2007	Autumn	<i>D. octopetala</i>	2
FM202794	<i>Cortinarius</i> aff. <i>casimiri</i>	R	2007	Autumn	<i>D. octopetala</i>	2
FM202795	<i>Cortinarius decipiens</i> s.l.	E	2007	Spring	<i>D. octopetala</i>	5
FM202796	<i>Cortinarius decipiens</i> s.l.	E	2007	Spring	<i>D. octopetala</i>	5
FM202797	<i>Cortinarius decipiens</i> s.l.	E	2007	Spring	<i>D. octopetala</i>	5
FM202798	<i>Cenocccum geophilum</i>	R	2007	Spring	<i>D. octopetala</i>	6
FM202799	<i>Inocybe</i> sp. 3	R	2007	Spring	<i>D. octopetala</i>	6
FM202800	<i>Cenocccum geophilum</i>	B	2007	Spring	<i>D. octopetala</i>	6
FM202801	Clavulinaceae sp. 1	F	2007	Spring	<i>D. octopetala</i>	6
FM202802	<i>Tomentella</i> aff. <i>ramossissima</i>	F	2007	Spring	<i>D. octopetala</i>	6
FM202803	<i>Sebacina</i> sp. 11	R	2007	Autumn	<i>D. octopetala</i>	4
FM202804	<i>Sebacina</i> sp. 8	R	2007	Autumn	<i>D. octopetala</i>	4
FM202805	<i>Sebacina</i> sp. 8	R	2007	Autumn	<i>D. octopetala</i>	4
FM202806	<i>Sebacina epigaea</i>	F	2007	Autumn	<i>D. octopetala</i>	4
FM202807	<i>Sebacina epigaea</i>	F	2007	Autumn	<i>D. octopetala</i>	4
FM202808	<i>Sebacina epigaea</i>	F	2007	Autumn	<i>D. octopetala</i>	4
FM202809	<i>Tomentella</i> sp. 15	F	2007	Autumn	<i>D. octopetala</i>	4
FM202810	<i>Sebacina</i> sp. 8	F	2007	Autumn	<i>D. octopetala</i>	2
FM202811	<i>Hebeloma</i> aff. <i>vinosophyllum</i> (<i>hiemale</i>)	F	2007	Autumn	<i>D. octopetala</i>	2
FM202812	<i>Hebeloma</i> aff. <i>vinosophyllum</i> (<i>hiemale</i>)	F	2007	Autumn	<i>D. octopetala</i>	2
FM202813	<i>Sebacina</i> sp. 8	F	2007	Autumn	<i>D. octopetala</i>	2
FM202814	<i>Tomentella</i> sp. 9	E	2007	Autumn	<i>D. octopetala</i>	2
FM202815	<i>Tomentella</i> sp. 13	D	2007	Autumn	<i>D. octopetala</i>	2
FM202816	<i>Inocybe</i> aff. <i>egenula</i>	D	2007	Autumn	<i>D. octopetala</i>	2
FM202817	<i>Tomentella</i> sp. 1	B	2007	Autumn	<i>D. octopetala</i>	2
FM202818	<i>Tomentella</i> sp. 1	B	2007	Autumn	<i>D. octopetala</i>	2
FM202819	<i>Inocybe</i> aff. <i>rufuloides</i> 1	R	2007	Autumn	<i>D. octopetala</i>	3
FM202820	<i>Tomentella</i> cf. <i>badia</i>	R	2007	Autumn	<i>D. octopetala</i>	3
FM202821	<i>Cortinarius diasemospermus</i>	F	2007	Autumn	<i>D. octopetala</i>	3
FM202822	<i>Inocybe</i> cf. <i>rufuloides</i> 2	E	2007	Autumn	<i>D. octopetala</i>	3
FM202823	<i>Inocybe</i> cf. <i>rufuloides</i> 2	E	2007	Autumn	<i>D. octopetala</i>	3
FM202824	<i>Cenocccum geophilum</i>	B	2007	Autumn	<i>D. octopetala</i>	3
FM202825	<i>Cenocccum geophilum</i>	B	2007	Autumn	<i>D. octopetala</i>	3
FM202826	<i>Cenocccum geophilum</i>	B	2007	Autumn	<i>D. octopetala</i>	3
FM202827	<i>Cenocccum geophilum</i>	B	2007	Autumn	<i>D. octopetala</i>	3
FM202828	<i>Tomentella</i> cf. <i>badia</i>	D	2007	Autumn	<i>D. octopetala</i>	3
FM202829	<i>Tomentella</i> sp. 13	D	2007	Autumn	<i>D. octopetala</i>	3
FM202830	<i>Cortinarius</i> aff. <i>casimiri</i>	D	2007	Autumn	<i>D. octopetala</i>	6
FM202831	<i>Tomentella</i> sp. 13	D	2007	Autumn	<i>D. octopetala</i>	6
FM202832	<i>Tomentella</i> sp. 13	D	2007	Autumn	<i>D. octopetala</i>	6
FM202833	<i>Cortinarius</i> aff. <i>casimiri</i>	D	2007	Autumn	<i>D. octopetala</i>	6
FM202834	<i>Sebacina epigaea</i>	F	2007	Autumn	<i>D. octopetala</i>	6
FM202835	<i>Sebacina epigaea</i>	F	2007	Autumn	<i>D. octopetala</i>	6
FM202836	<i>Cortinarius diasemospermus</i>	F	2007	Autumn	<i>D. octopetala</i>	6
FM202837	<i>Tomentella</i> sp. 1	F	2007	Autumn	<i>D. octopetala</i>	6
FM202838	<i>Inocybe</i> sp. 2	R	2007	Autumn	<i>D. octopetala</i>	6
FM202839	<i>Tomentella</i> sp. 9	E	2007	Autumn	<i>D. octopetala</i>	4
FM202840	<i>Tomentella</i> sp. 9	E	2007	Autumn	<i>D. octopetala</i>	4
FM202841	<i>Tomentella</i> sp. 12	E	2007	Autumn	<i>D. octopetala</i>	4
FM202842	<i>Tomentella</i> sp. 9	E	2007	Autumn	<i>D. octopetala</i>	4
FM202843	<i>Tomentella</i> sp. 12	B	2007	Autumn	<i>D. octopetala</i>	4
FM202844	<i>Tomentella</i> cf. <i>badia</i>	B	2007	Autumn	<i>D. octopetala</i>	4
FM202845	<i>Tomentella</i> sp. 12	B	2007	Autumn	<i>D. octopetala</i>	5
FM202846	<i>Thelephora</i> sp. 1	B	2007	Autumn	<i>D. octopetala</i>	5
FM202847	<i>Sebacina</i> sp. 13	F	2007	Autumn	<i>D. octopetala</i>	5
FM202848	<i>Sebacina</i> sp. 10	F	2007	Autumn	<i>D. octopetala</i>	5
FM202849	<i>Tomentella</i> aff. <i>stuposa</i>	E	2007	Autumn	<i>D. octopetala</i>	5
FM202850	<i>Tomentella</i> aff. <i>stuposa</i>	E	2007	Autumn	<i>D. octopetala</i>	5
FM202851	<i>Inocybe</i> cf. <i>rufuloides</i> 2	E	2007	Autumn	<i>D. octopetala</i>	5
FM202852	<i>Tomentella</i> sp. 13	D	2007	Autumn	<i>D. octopetala</i>	5
FM202853	<i>Tomentella</i> sp. 13	D	2007	Autumn	<i>D. octopetala</i>	5
FM202854	<i>Tomentella</i> sp. 13	D	2007	Autumn	<i>D. octopetala</i>	5

APPENDIX 1

Continued.

Access. no.	Species_MOTU	Cliff	Year	Season	Plant sp.	Plant no.
FM202855	<i>Tomentella</i> sp. 13	D	2007	Autumn	<i>D. octopetala</i>	5
FM202856	<i>Tomentella</i> sp. 1	R	2007	Autumn	<i>D. octopetala</i>	5
FM202857	<i>Sebacina</i> sp. 8	R	2007	Autumn	<i>D. octopetala</i>	5
FM202858	<i>Tomentella</i> aff. <i>stuposa</i>	E	2007	Autumn	<i>D. octopetala</i>	6
FM202859	<i>Tomentella</i> aff. <i>stuposa</i>	E	2007	Autumn	<i>D. octopetala</i>	6
FM202860	<i>Tomentella</i> aff. <i>stuposa</i>	E	2007	Autumn	<i>D. octopetala</i>	6
FM202861	<i>Cenocccum geophilum</i>	B	2007	Autumn	<i>D. octopetala</i>	6
FM202862	<i>Inocybe</i> sp. 2	B	2007	Autumn	<i>D. octopetala</i>	6
FM202863	<i>Thelephora</i> sp. 1	B	2007	Autumn	<i>D. octopetala</i>	6
FM202864	Clavulinaceae sp. 2	B	2006	Spring	<i>S. reticulata</i>	8
FM202865	<i>Inocybe bulbosissima</i>	B	2006	Spring	<i>S. reticulata</i>	9
FM202866	Clavulinaceae sp. 2	B	2006	Spring	<i>S. reticulata</i>	9
FM202867	<i>Cenocccum geophilum</i>	B	2006	Spring	<i>S. reticulata</i>	10
FM202868	<i>Thelephora</i> sp. 1	B	2006	Spring	<i>S. reticulata</i>	10
FM202869	<i>Sebacina</i> sp. 1	B	2006	Spring	<i>S. reticulata</i>	10
FM202870	<i>Russula</i> sp.	D	2006	Spring	<i>S. reticulata</i>	5
FM202871	<i>Inocybe bulbosissima</i>	B	2006	Spring	<i>S. reticulata</i>	12
FM202872	<i>Thelephora</i> sp. 1	B	2006	Spring	<i>S. reticulata</i>	12
FM202873	<i>Inocybe bulbosissima</i>	B	2006	Spring	<i>S. reticulata</i>	12
FM202874	<i>Inocybe</i> cf. <i>leucoblema</i>	D	2006	Spring	<i>S. reticulata</i>	12
FM202875	<i>Tomentella</i> sp. 4	D	2006	Spring	<i>S. reticulata</i>	12
FM202876	<i>Inocybe</i> aff. <i>rufuloides</i> 1	D	2006	Spring	<i>S. reticulata</i>	13
FM202877	<i>Russula</i> sp.	D	2006	Spring	<i>S. reticulata</i>	5
FM202878	<i>Cenocccum geophilum</i>	F	2006	Spring	<i>S. reticulata</i>	13
FM202879	<i>Lactarius</i> sp. 1	C	2006	Spring	<i>S. reticulata</i>	15
FM202880	<i>Cenocccum geophilum</i>	F	2006	Spring	<i>S. reticulata</i>	13
FM202881	<i>Cortinarius decipiens</i> s.l.	F	2006	Spring	<i>S. reticulata</i>	13
FM202882	<i>Cenocccum geophilum</i>	A	2006	Spring	<i>S. reticulata</i>	17
FM202883	<i>Russula</i> sp.	D	2006	Spring	<i>S. reticulata</i>	5
FM202884	<i>Thelephora</i> sp. 2	A	2006	Spring	<i>S. reticulata</i>	18
FM202885	<i>Thelephora</i> sp. 2	A	2006	Spring	<i>S. reticulata</i>	18
FM202886	<i>Thelephora</i> sp. 2	A	2006	Spring	<i>S. reticulata</i>	18
FM202887	<i>Cortinarius</i> aff. <i>casimiri</i>	C	2006	Spring	<i>S. reticulata</i>	16
FM202888	<i>Cortinarius</i> aff. <i>casimiri</i>	C	2006	Spring	<i>S. reticulata</i>	16
FM202889	<i>Cortinarius</i> aff. <i>casimiri</i>	C	2006	Spring	<i>S. reticulata</i>	16
FM202890	<i>Cortinarius decipiens</i> s.l.	C	2006	Spring	<i>S. reticulata</i>	17
FM202891	<i>Cortinarius decipiens</i> s.l.	C	2006	Spring	<i>S. reticulata</i>	17
FM202892	<i>Tomentella</i> sp. 5	C	2006	Spring	<i>S. reticulata</i>	18
FM202893	<i>Tomentella</i> sp. 5	C	2006	Spring	<i>S. reticulata</i>	18
FM202894	<i>Tomentella</i> cf. <i>viridula</i>	F	2006	Spring	<i>S. reticulata</i>	16
FM202895	Clavulinaceae sp. 3	F	2006	Spring	<i>S. reticulata</i>	17
FM202896	<i>Tomentella</i> cf. <i>viridula</i>	F	2006	Spring	<i>S. reticulata</i>	16
FM202897	<i>Cortinarius diasemospermus</i>	F	2006	Spring	<i>S. reticulata</i>	17
FM202898	<i>Cortinarius decipiens</i> s.l.	C	2006	Spring	<i>S. reticulata</i>	19
FM202899	<i>Cenocccum geophilum</i>	C	2006	Spring	<i>S. reticulata</i>	19
FM202900	<i>Cortinarius</i> (subg. <i>Telamonia</i>) sp. 2	D	2006	Spring	<i>S. reticulata</i>	4
FM202901	<i>Cenocccum geophilum</i>	A	2006	Spring	<i>S. reticulata</i>	19
FM202902	<i>Lactarius</i> sp. 2	F	2006	Spring	<i>S. reticulata</i>	18
FM202903	<i>Cortinarius</i> (subg. <i>Telamonia</i>) sp. 2	D	2006	Spring	<i>S. reticulata</i>	4
FM202904	<i>Lactarius</i> sp. 3	F	2006	Spring	<i>S. reticulata</i>	18
FM202905	<i>Tomentella</i> cf. <i>viridula</i>	F	2006	Spring	<i>S. reticulata</i>	19
FM202906	<i>Tomentella</i> cf. <i>viridula</i>	F	2006	Spring	<i>S. reticulata</i>	19
FM202907	<i>Tomentella</i> sp. 15	F	2006	Spring	<i>S. reticulata</i>	19
FM202908	<i>Cortinarius</i> aff. <i>subsertipes</i>	F	2006	Spring	<i>S. reticulata</i>	19
FM202909	<i>Cenocccum geophilum</i>	C	2006	Spring	<i>S. reticulata</i>	20
FM202910	<i>Cenocccum geophilum</i>	C	2006	Spring	<i>S. reticulata</i>	20
FM202911	<i>Sebacina incrustans</i>	F	2006	Spring	<i>S. reticulata</i>	14
FM202912	Clavulinaceae sp. 4	F	2006	Spring	<i>S. reticulata</i>	14
FM202913	<i>Sebacina</i> sp. 3	F	2006	Spring	<i>S. reticulata</i>	14
FM202914	<i>Hebeloma</i> aff. <i>polare/monticola</i>	F	2006	Spring	<i>S. reticulata</i>	15
FM202915	<i>Cenocccum geophilum</i>	F	2006	Spring	<i>S. reticulata</i>	15
FM202916	<i>Cenocccum geophilum</i>	F	2006	Spring	<i>S. reticulata</i>	15
FM202917	<i>Sebacina</i> sp. 1	A	2006	Spring	<i>S. reticulata</i>	13
FM202918	<i>Cenocccum geophilum</i>	A	2006	Spring	<i>S. reticulata</i>	13

APPENDIX 1

Continued.

Access. no.	Species_MOTU	Cliff	Year	Season	Plant sp.	Plant no.
FM202919	<i>Sebacina</i> sp. 1	A	2006	Spring	<i>S. reticulata</i>	14
FM202920	<i>Sebacina</i> sp. 1	A	2006	Spring	<i>S. reticulata</i>	14
FM202921	<i>Cortinarius decipiens</i> s.l.	A	2006	Spring	<i>S. reticulata</i>	15
FM202922	<i>Inocybe</i> aff. <i>rufuloides</i> 1	A	2006	Spring	<i>S. reticulata</i>	15
FM202923	<i>Sebacina epigaea</i>	A	2006	Spring	<i>S. reticulata</i>	15
FM202924	<i>Tomentella</i> cf. <i>viridula</i>	F	2006	Spring	<i>S. reticulata</i>	16
FM202925	<i>Cortinarius</i> aff. <i>collinitus</i>	F	2006	Spring	<i>S. reticulata</i>	13
FM202926	<i>Cortinarius</i> (subg. <i>Telamonia</i>) sp. 2	D	2006	Spring	<i>S. reticulata</i>	2
FM202927	<i>Inocybe</i> sp. 4	A	2006	Spring	<i>S. reticulata</i>	19
FM202928	<i>Tomentella stuposa</i>	C	2006	Spring	<i>S. reticulata</i>	18
FM202929	<i>Cortinarius</i> aff. <i>casimiri</i>	C	2006	Spring	<i>S. reticulata</i>	18
FM202930	<i>Cortinarius</i> (subg. <i>Telamonia</i>) sp. 2	D	2006	Spring	<i>S. reticulata</i>	2
FM202931	<i>Inocybe</i> sp. 1	B	2006	Spring	<i>S. reticulata</i>	7
FM202932	<i>Clavulinaceae</i> sp. 2	B	2006	Spring	<i>S. reticulata</i>	8
FM202933	<i>Cortinarius</i> aff. <i>casimiri</i>	C	2006	Spring	<i>S. reticulata</i>	15
FM202934	<i>Clavulinaceae</i> sp. 4	F	2006	Spring	<i>S. reticulata</i>	14
FM202935	<i>Cortinarius</i> (subg. <i>Telamonia</i>) sp. 2	D	2006	Spring	<i>S. reticulata</i>	2
FM202936	<i>Cortinarius decipiens</i> s.l.	C	2006	Spring	<i>S. reticulata</i>	17
FM202937	<i>Inocybe bulbosissima</i>	B	2006	Spring	<i>S. reticulata</i>	9
FM202938	<i>Cenocccum geophilum</i>	F	2006	Spring	<i>S. reticulata</i>	11
FM202939	<i>Hebeloma</i> aff. <i>vinosophyllum</i> (<i>hiemale</i>)	F	2006	Spring	<i>S. reticulata</i>	8
FM202940	<i>Sebacina</i> sp. 5	F	2006	Spring	<i>S. reticulata</i>	7
FM202941	<i>Tomentella</i> aff. <i>ramossisima</i>	F	2006	Spring	<i>S. reticulata</i>	6
FM202942	<i>Tomentella</i> sp. 13	D	2006	Spring	<i>S. reticulata</i>	1
FM202943	<i>Inocybe</i> sp. 5	B	2006	Spring	<i>S. reticulata</i>	2
FM202944	<i>Tomentella</i> sp. 5	D	2006	Spring	<i>S. reticulata</i>	12
FM202945	<i>Tomentella</i> sp. 13	D	2006	Spring	<i>S. reticulata</i>	1
FM202946	<i>Cenocccum geophilum</i>	B	2006	Spring	<i>S. reticulata</i>	5
FM202947	<i>Tomentella</i> cf. <i>umbrinospora</i>	B	2006	Spring	<i>S. reticulata</i>	5
FM202948	<i>Cenocccum geophilum</i>	B	2006	Spring	<i>S. reticulata</i>	4
FM202949	<i>Cenocccum geophilum</i>	B	2006	Spring	<i>S. reticulata</i>	4
FM202950	<i>Sebacina</i> sp. 2	B	2006	Spring	<i>S. reticulata</i>	3
FM202951	<i>Cortinarius diasemospermus</i>	B	2006	Spring	<i>S. reticulata</i>	3
FM202952	<i>Cortinarius diasemospermus</i>	B	2006	Spring	<i>S. reticulata</i>	3
FM202953	<i>Hebeloma</i> aff. <i>cavipes/vaccinum</i>	B	2006	Spring	<i>S. reticulata</i>	1
FM202954	<i>Sebacina epigaea</i>	F	2006	Spring	<i>S. reticulata</i>	4
FM202955	<i>Cenocccum geophilum</i>	F	2006	Spring	<i>S. reticulata</i>	4
FM202956	<i>Tomentella</i> sp. 2	F	2006	Spring	<i>S. reticulata</i>	4
FM202957	<i>Tomentella</i> aff. <i>ramossisima</i>	F	2006	Spring	<i>S. reticulata</i>	4
FM202958	<i>Sebacina</i> sp. 1	F	2006	Spring	<i>S. reticulata</i>	4
FM202959	<i>Tomentella</i> sp. 1	F	2006	Spring	<i>S. reticulata</i>	2
FM202960	<i>Sebacina</i> sp. 1	F	2006	Spring	<i>S. reticulata</i>	6
FM202961	<i>Sebacina</i> sp. 3	F	2006	Spring	<i>S. reticulata</i>	6
FM202962	<i>Tomentella</i> sp. 1	F	2006	Spring	<i>S. reticulata</i>	6
FM202963	<i>Cenocccum geophilum</i>	F	2006	Spring	<i>S. reticulata</i>	7
FM202964	<i>Tomentella</i> sp. 1	F	2006	Spring	<i>S. reticulata</i>	7
FM202965	<i>Tomentella</i> sp. 1	F	2006	Spring	<i>S. reticulata</i>	7
FM202966	<i>Sebacina</i> sp. 4	F	2006	Spring	<i>S. reticulata</i>	8
FM202967	<i>Cenocccum geophilum</i>	F	2006	Spring	<i>S. reticulata</i>	10
FM202968	<i>Sebacina</i> sp. 4	F	2006	Spring	<i>S. reticulata</i>	10
FM202969	<i>Sebacina</i> sp. 4	F	2006	Spring	<i>S. reticulata</i>	10
FM202970	<i>Cortinarius</i> aff. <i>rubicosus</i>	F	2006	Spring	<i>S. reticulata</i>	10
FM202971	<i>Sebacina epigaea</i>	F	2006	Spring	<i>S. reticulata</i>	11
FM202972	<i>Cortinarius decipiens</i> s.l.	F	2006	Spring	<i>S. reticulata</i>	11
FM202973	<i>Hebeloma</i> aff. <i>polare/monticola</i>	F	2006	Spring	<i>S. reticulata</i>	12
FM202974	<i>Cenocccum geophilum</i>	F	2006	Spring	<i>S. reticulata</i>	1
FM202975	<i>Cenocccum geophilum</i>	F	2006	Spring	<i>S. reticulata</i>	12
FM202976	<i>Hebeloma</i> aff. <i>polare/monticola</i>	F	2006	Spring	<i>S. reticulata</i>	12
FM202977	<i>Hebeloma</i> aff. <i>polare/monticola</i>	F	2006	Spring	<i>S. reticulata</i>	12
FM202978	<i>Cenocccum geophilum</i>	D	2006	Spring	<i>S. reticulata</i>	6
FM202979	<i>Tomentella</i> cf. <i>badia</i>	D	2006	Spring	<i>S. reticulata</i>	6
FM202980	<i>Cenocccum geophilum</i>	D	2006	Spring	<i>S. reticulata</i>	7
FM202981	<i>Cenocccum geophilum</i>	D	2006	Spring	<i>S. reticulata</i>	7
FM202982	<i>Tomentella</i> aff. <i>ramossisima</i>	D	2006	Spring	<i>S. reticulata</i>	7

APPENDIX 1

Continued.

Access. no.	Species_MOTU	Cliff	Year	Season	Plant sp.	Plant no.
FM202983	<i>Tomentella</i> aff. <i>ramossisima</i>	D	2006	Spring	<i>S. reticulata</i>	8
FM202984	<i>Hebeloma</i> aff. <i>vinosophyllum</i> (<i>hiemale</i>)	F	2006	Spring	<i>S. reticulata</i>	1
FM202985	<i>Tomentella</i> sp. 13	D	2006	Spring	<i>S. reticulata</i>	8
FM202986	<i>Cenocccum geophilum</i>	D	2006	Spring	<i>S. reticulata</i>	9
FM202987	<i>Tomentella</i> aff. <i>ramossisima</i>	D	2006	Spring	<i>S. reticulata</i>	9
FM202988	<i>Tomentella</i> sp. 13	D	2006	Spring	<i>S. reticulata</i>	10
FM202989	<i>Cortinarius</i> aff. <i>casimiri</i>	D	2006	Spring	<i>S. reticulata</i>	11
FM202990	<i>Cenocccum geophilum</i>	B	2006	Spring	<i>S. reticulata</i>	6
FM202991	<i>Cenocccum geophilum</i>	B	2006	Spring	<i>S. reticulata</i>	6
FM202992	<i>Cenocccum geophilum</i>	B	2006	Spring	<i>S. reticulata</i>	6
FM202993	<i>Cenocccum geophilum</i>	B	2006	Spring	<i>S. reticulata</i>	6
FM202994	<i>Cenocccum geophilum</i>	B	2006	Spring	<i>S. reticulata</i>	7
FM202995	<i>Cenocccum geophilum</i>	B	2006	Spring	<i>S. reticulata</i>	7
FM202996	<i>Thelephora</i> sp. 1	B	2006	Spring	<i>S. reticulata</i>	7
FM202997	<i>Tomentella</i> sp. 3	B	2006	Spring	<i>S. reticulata</i>	8
FM202998	<i>Russula</i> sp.	D	2007	Spring	<i>S. reticulata</i>	2
FM202999	<i>Cenocccum geophilum</i>	D	2007	Spring	<i>S. reticulata</i>	2
FM203000	<i>Cenocccum geophilum</i>	D	2007	Spring	<i>S. reticulata</i>	2
FM203001	<i>Tomentella</i> sp. 13	D	2007	Spring	<i>S. reticulata</i>	3
FM203002	<i>Tomentella</i> sp. 13	D	2007	Spring	<i>S. reticulata</i>	3
FM203003	<i>Tomentella</i> sp. 13	D	2007	Spring	<i>S. reticulata</i>	3
FM203004	<i>Tomentella</i> sp. 13	D	2007	Spring	<i>S. reticulata</i>	3
FM203005	<i>Tomentella</i> sp. 6	B	2007	Spring	<i>S. reticulata</i>	3
FM203006	<i>Tomentella</i> cf. <i>viridula</i>	B	2007	Spring	<i>S. reticulata</i>	3
FM203007	<i>Cenocccum geophilum</i>	R	2007	Spring	<i>S. reticulata</i>	1
FM203008	<i>Thelephora</i> sp. 3	R	2007	Spring	<i>S. reticulata</i>	1
FM203009	<i>Inocybe</i> cf. <i>rufuloides</i> 2	B	2007	Spring	<i>S. reticulata</i>	1
FM203010	<i>Tomentella</i> aff. <i>ramossisima</i>	D	2007	Spring	<i>S. reticulata</i>	1
FM203011	<i>Tomentella</i> aff. <i>ramossisima</i>	D	2007	Spring	<i>S. reticulata</i>	1
FM203012	<i>Tomentella</i> aff. <i>ramossisima</i>	D	2007	Spring	<i>S. reticulata</i>	1
FM203013	<i>Cenocccum geophilum</i>	D	2007	Spring	<i>S. reticulata</i>	1
FM203014	<i>Tomentella</i> cf. <i>cinerascens</i>	F	2007	Spring	<i>S. reticulata</i>	1
FM203015	<i>Hebeloma</i> aff. <i>leucosarx</i> (<i>velutipes</i>)	E	2007	Spring	<i>S. reticulata</i>	1
FM203016	<i>Hebeloma</i> aff. <i>leucosarx</i> (<i>velutipes</i>)	E	2007	Spring	<i>S. reticulata</i>	1
FM203017	<i>Tomentella</i> sp. 7	B	2007	Spring	<i>S. reticulata</i>	2
FM203018	<i>Sebacina</i> sp. 6	F	2007	Spring	<i>S. reticulata</i>	2
FM203019	<i>Hebeloma</i> aff. <i>vinosophyllum</i> (<i>hiemale</i>)	F	2007	Spring	<i>S. reticulata</i>	2
FM203020	<i>Cenocccum geophilum</i>	R	2007	Spring	<i>S. reticulata</i>	2
FM203021	<i>Cenocccum geophilum</i>	E	2007	Spring	<i>S. reticulata</i>	2
FM203022	<i>Cenocccum geophilum</i>	R	2007	Spring	<i>S. reticulata</i>	5
FM203023	<i>Cortinarius</i> aff. <i>casimiri</i>	R	2007	Spring	<i>S. reticulata</i>	5
FM203024	<i>Cenocccum geophilum</i>	R	2007	Spring	<i>S. reticulata</i>	5
FM203025	<i>Sebacina</i> sp. 3	F	2007	Spring	<i>S. reticulata</i>	5
FM203026	<i>Tomentella</i> sp. 1	F	2007	Spring	<i>S. reticulata</i>	5
FM203027	Clavulinaceae sp. 1	F	2007	Spring	<i>S. reticulata</i>	5
FM203028	<i>Sebacina</i> sp. 3	F	2007	Spring	<i>S. reticulata</i>	5
FM203029	<i>Tomentella</i> aff. <i>ramossisima</i>	D	2007	Spring	<i>S. reticulata</i>	5
FM203030	<i>Tomentella</i> aff. <i>ramossisima</i>	D	2007	Spring	<i>S. reticulata</i>	5
FM203031	<i>Cortinarius</i> aff. <i>casimiri</i>	D	2007	Spring	<i>S. reticulata</i>	5
FM203032	<i>Cortinarius</i> aff. <i>casimiri</i>	D	2007	Spring	<i>S. reticulata</i>	5
FM203033	<i>Cenocccum geophilum</i>	R	2007	Spring	<i>S. reticulata</i>	3
FM203034	<i>Cenocccum geophilum</i>	R	2007	Spring	<i>S. reticulata</i>	3
FM203035	<i>Tomentella</i> aff. <i>ramossisima</i>	E	2007	Spring	<i>S. reticulata</i>	3
FM203036	<i>Cenocccum geophilum</i>	E	2007	Spring	<i>S. reticulata</i>	3
FM203037	<i>Tomentella</i> sp. 15	F	2007	Spring	<i>S. reticulata</i>	3
FM203038	<i>Cortinarius decipiens</i> s.l.	F	2007	Spring	<i>S. reticulata</i>	3
FM203039	<i>Cenocccum geophilum</i>	F	2007	Spring	<i>S. reticulata</i>	3
FM203040	<i>Hebeloma</i> aff. <i>cavipes/vaccinum</i>	F	2007	Spring	<i>S. reticulata</i>	3
FM203041	<i>Cortinarius</i> aff. <i>casimiri</i>	R	2007	Spring	<i>S. reticulata</i>	4
FM203042	<i>Cenocccum geophilum</i>	R	2007	Spring	<i>S. reticulata</i>	4
FM203043	<i>Cenocccum geophilum</i>	R	2007	Spring	<i>S. reticulata</i>	4
FM203044	<i>Thelephora</i> sp. 1	B	2007	Spring	<i>S. reticulata</i>	4
FM203045	<i>Thelephora</i> sp. 1	B	2007	Spring	<i>S. reticulata</i>	4
FM203046	<i>Cenocccum geophilum</i>	F	2007	Spring	<i>S. reticulata</i>	4

APPENDIX 1

Continued.

Access. no.	Species_MOTU	Cliff	Year	Season	Plant sp.	Plant no.
FM203047	<i>Tomentella</i> sp. 13	D	2007	Spring	<i>S. reticulata</i>	4
FM203048	<i>Cortinarius</i> aff. <i>casimiri</i>	D	2007	Spring	<i>S. reticulata</i>	4
FM203049	<i>Cortinarius</i> aff. <i>casimiri</i>	D	2007	Spring	<i>S. reticulata</i>	4
FM203050	<i>Cenocccum geophilum</i>	E	2007	Spring	<i>S. reticulata</i>	4
FM203051	<i>Cenocccum geophilum</i>	E	2007	Spring	<i>S. reticulata</i>	4
FM203052	<i>Cenocccum geophilum</i>	B	2007	Spring	<i>S. reticulata</i>	5
FM203053	<i>Cenocccum geophilum</i>	B	2007	Spring	<i>S. reticulata</i>	5
FM203054	<i>Tomentella</i> sp. 1	B	2007	Spring	<i>S. reticulata</i>	5
FM203055	<i>Tomentella</i> sp. 13	D	2007	Autumn	<i>S. reticulata</i>	1
FM203056	<i>Tomentella</i> sp. 13	D	2007	Autumn	<i>S. reticulata</i>	1
FM203057	<i>Cenocccum geophilum</i>	E	2007	Spring	<i>S. reticulata</i>	5
FM203058	<i>Cortinarius</i> aff. <i>casimiri</i>	R	2007	Spring	<i>S. reticulata</i>	6
FM203059	<i>Cortinarius</i> aff. <i>casimiri</i>	R	2007	Spring	<i>S. reticulata</i>	6
FM203060	<i>Tomentella</i> sp. 13	R	2007	Spring	<i>S. reticulata</i>	6
FM203061	Clavulinaceae sp. 1	F	2007	Spring	<i>S. reticulata</i>	6
FM203062	<i>Tomentella</i> sp. 13	D	2007	Autumn	<i>S. reticulata</i>	4
FM203063	<i>Cenocccum geophilum</i>	R	2007	Autumn	<i>S. reticulata</i>	4
FM203064	<i>Cenocccum geophilum</i>	R	2007	Autumn	<i>S. reticulata</i>	4
FM203065	<i>Inocybe</i> sp. 2	R	2007	Autumn	<i>S. reticulata</i>	4
FM203066	<i>Sebacina</i> sp. 3	F	2007	Autumn	<i>S. reticulata</i>	4
FM203067	<i>Sebacina epigaea</i>	F	2007	Autumn	<i>S. reticulata</i>	4
FM203068	<i>Sebacina epigaea</i>	F	2007	Autumn	<i>S. reticulata</i>	4
FM203069	<i>Tomentella</i> aff. <i>ramossisima</i>	F	2007	Autumn	<i>S. reticulata</i>	4
FM203070	<i>Cenocccum geophilum</i>	F	2007	Autumn	<i>S. reticulata</i>	2
FM203071	<i>Cenocccum geophilum</i>	E	2007	Autumn	<i>S. reticulata</i>	2
FM203072	<i>Tomentella</i> cf. <i>badia</i>	D	2007	Autumn	<i>S. reticulata</i>	2
FM203073	<i>Tomentella</i> sp. 13	D	2007	Autumn	<i>S. reticulata</i>	2
FM203074	<i>Tomentella</i> sp. 13	D	2007	Autumn	<i>S. reticulata</i>	2
FM203075	<i>Tomentella</i> sp. 13	D	2007	Autumn	<i>S. reticulata</i>	2
FM203076	<i>Tomentella</i> sp. 1	B	2007	Autumn	<i>S. reticulata</i>	2
FM203077	<i>Hebeloma</i> aff. <i>cavipes/vaccinum</i>	B	2007	Autumn	<i>S. reticulata</i>	2
FM203078	<i>Thelephora</i> sp. 2	R	2007	Autumn	<i>S. reticulata</i>	3
FM203079	<i>Cortinarius decipiens</i> s.l.	R	2007	Autumn	<i>S. reticulata</i>	3
FM203080	<i>Cortinarius decipiens</i> s.l.	R	2007	Autumn	<i>S. reticulata</i>	3
FM203081	<i>Sebacina</i> sp. 1	F	2007	Autumn	<i>S. reticulata</i>	3
FM203082	<i>Sebacina</i> sp. 1	F	2007	Autumn	<i>S. reticulata</i>	3
FM203083	<i>Sebacina</i> sp. 9	F	2007	Autumn	<i>S. reticulata</i>	3
FM203084	<i>Cortinarius decipiens</i> s.l.	E	2007	Autumn	<i>S. reticulata</i>	3
FM203085	<i>Inocybe</i> cf. <i>rufuloides</i> 2	E	2007	Autumn	<i>S. reticulata</i>	3
FM203086	<i>Cenocccum geophilum</i>	B	2007	Autumn	<i>S. reticulata</i>	3
FM203087	<i>Tomentella</i> sp. 13	D	2007	Autumn	<i>S. reticulata</i>	3
FM203088	<i>Tomentella</i> sp. 13	D	2007	Autumn	<i>S. reticulata</i>	3
FM203089	<i>Russula</i> sp.	D	2007	Autumn	<i>S. reticulata</i>	6
FM203090	<i>Russula</i> sp.	D	2007	Autumn	<i>S. reticulata</i>	6
FM203091	<i>Cortinarius</i> aff. <i>casimiri</i>	D	2007	Autumn	<i>S. reticulata</i>	6
FM203092	<i>Cortinarius</i> aff. <i>casimiri</i>	D	2007	Autumn	<i>S. reticulata</i>	6
FM203093	<i>Tomentella</i> aff. <i>ramossisima</i>	F	2007	Autumn	<i>S. reticulata</i>	6
FM203094	<i>Sebacina epigaea</i>	F	2007	Autumn	<i>S. reticulata</i>	6
FM203095	<i>Tomentella</i> aff. <i>ramossisima</i>	F	2007	Autumn	<i>S. reticulata</i>	6
FM203096	<i>Hebeloma</i> aff. <i>polare/monticola</i>	F	2007	Autumn	<i>S. reticulata</i>	6
FM203097	<i>Sebacina epigaea</i>	R	2007	Autumn	<i>S. reticulata</i>	6
FM203098	<i>Tomentella</i> cf. <i>badia</i>	E	2007	Autumn	<i>S. reticulata</i>	4
FM203099	<i>Sebacina</i> sp. 12	E	2007	Autumn	<i>S. reticulata</i>	4
FM203100	<i>Tomentella</i> aff. <i>stuposa</i>	E	2007	Autumn	<i>S. reticulata</i>	4
FM203101	<i>Cenocccum geophilum</i>	B	2007	Autumn	<i>S. reticulata</i>	5
FM203102	<i>Cenocccum geophilum</i>	B	2007	Autumn	<i>S. reticulata</i>	5
FM203103	<i>Cenocccum geophilum</i>	B	2007	Autumn	<i>S. reticulata</i>	5
FM203104	<i>Cortinarius diasemospermus</i>	B	2007	Autumn	<i>S. reticulata</i>	5
FM203105	<i>Tomentella</i> sp. 14	F	2007	Autumn	<i>S. reticulata</i>	5
FM203106	<i>Tomentella</i> aff. <i>ramossisima</i>	F	2007	Autumn	<i>S. reticulata</i>	5
FM203107	<i>Inocybe</i> cf. <i>rufuloides</i> 2	E	2007	Autumn	<i>S. reticulata</i>	5
FM203108	<i>Cortinarius decipiens</i> s.l.	E	2007	Autumn	<i>S. reticulata</i>	5
FM203109	<i>Tomentella</i> sp. 13	D	2007	Autumn	<i>S. reticulata</i>	5
FM203110	<i>Tomentella</i> aff. <i>ramossisima</i>	D	2007	Autumn	<i>S. reticulata</i>	5

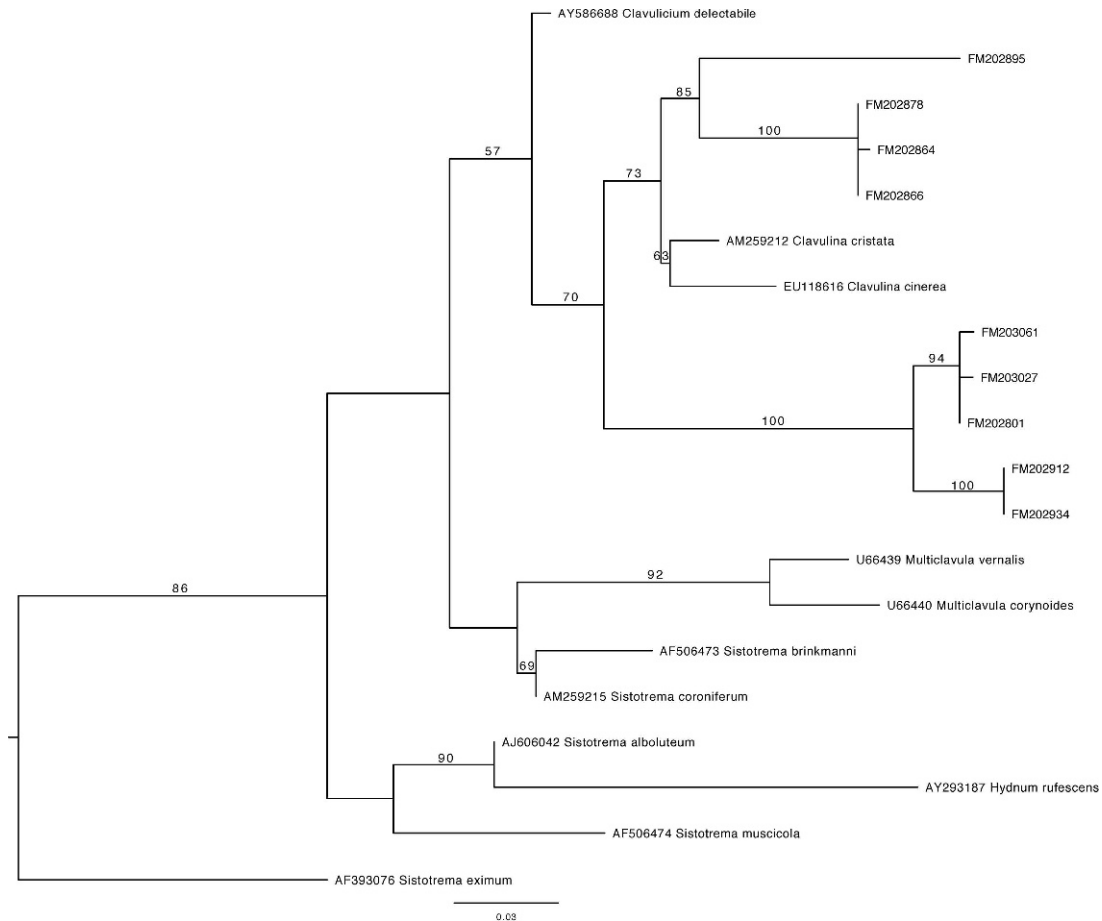
APPENDIX 1

Continued.

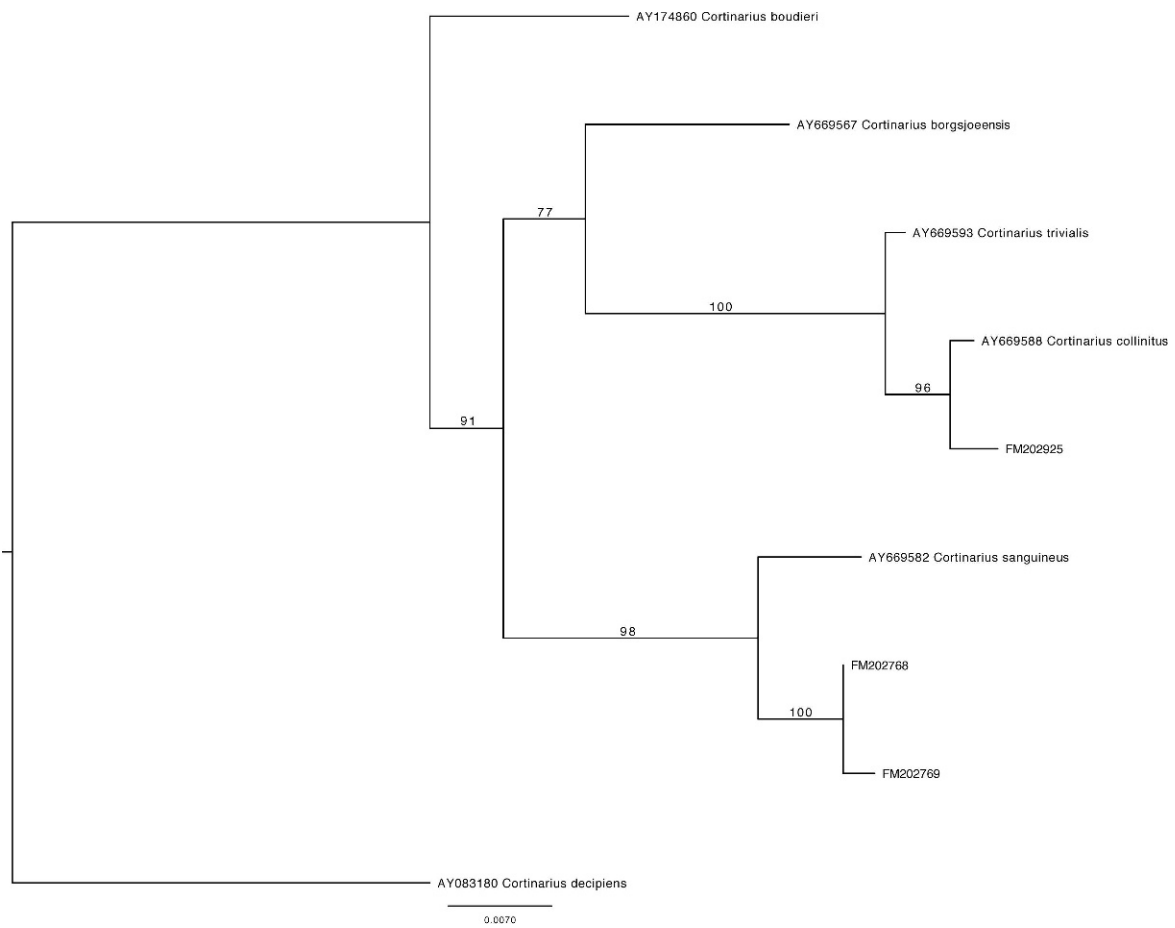
Access. no.	Species_MOTU	Cliff	Year	Season	Plant sp.	Plant no.
FM203111	<i>Tomentella</i> sp. 13	D	2007	Autumn	<i>S. reticulata</i>	5
FM203112	<i>Cenocccum geophilum</i>	R	2007	Autumn	<i>S. reticulata</i>	5
FM203113	<i>Tomentella</i> sp. 13	R	2007	Autumn	<i>S. reticulata</i>	5
FM203114	<i>Cortinarius</i> aff. <i>casimiri</i>	E	2007	Autumn	<i>S. reticulata</i>	6
FM203115	<i>Cortinarius</i> aff. <i>casimiri</i>	E	2007	Autumn	<i>S. reticulata</i>	6
FM203116	<i>Cenocccum geophilum</i>	B	2007	Autumn	<i>S. reticulata</i>	6
FM203117	<i>Thelephora</i> sp. 1	B	2007	Autumn	<i>S. reticulata</i>	6
FM203118	<i>Cenocccum geophilum</i>	B	2007	Autumn	<i>S. reticulata</i>	6

APPENDIX 2

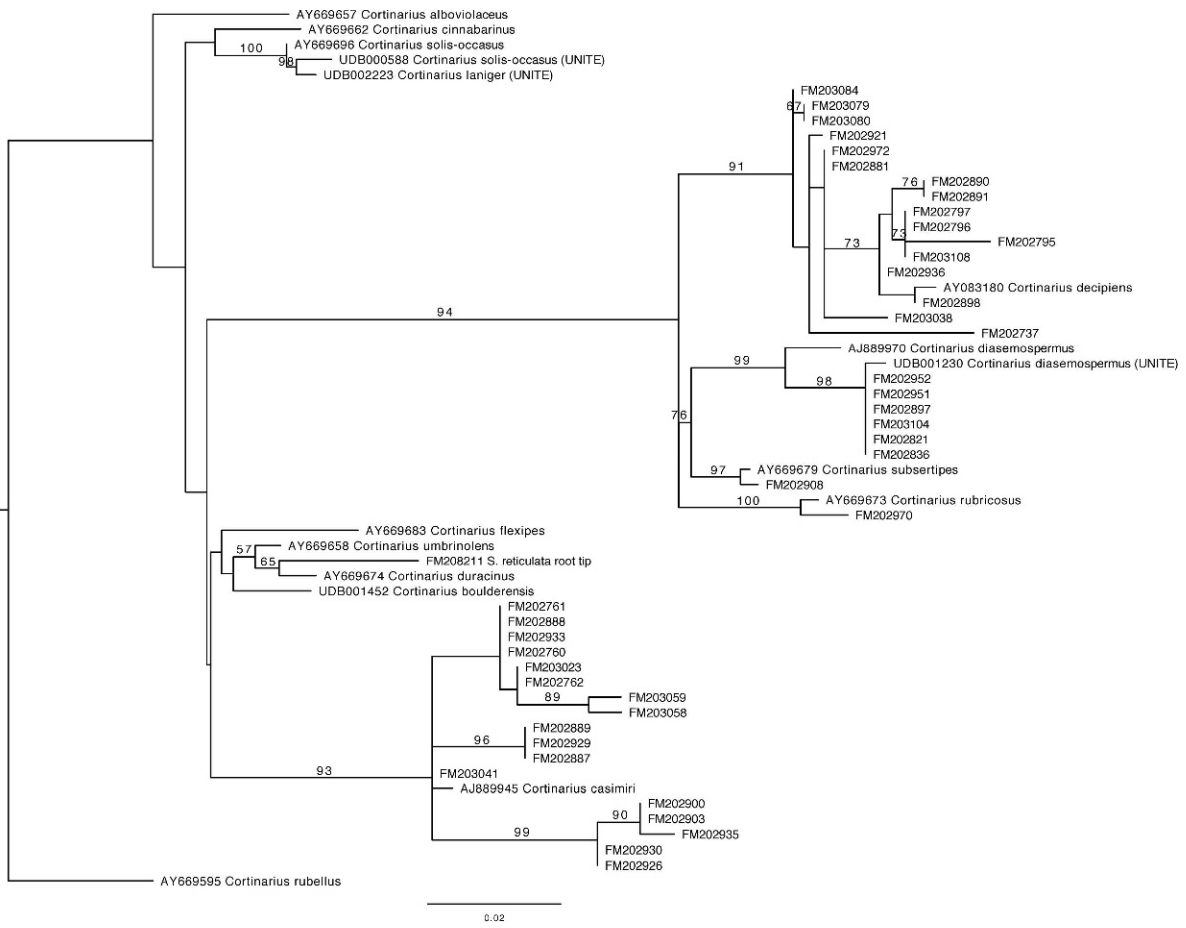
Maximum likelihood-based phylogenies depicting the 11 alignment groups. Bootstrap values over 50 are given above the branches, some bootstrap values on very short branches are omitted for the sake of clarity. Terminal taxa labeled with UNITE in parentheses after the species name originate from the Unite database. FM202730–FM203118 represents ectomycorrhizal root tips from this study. FM208209–FM208211 represents root tips collected during this study but outside the normal collection scheme. These later root tips are not included in any of statistical analysis of the ectomycorrhizal community.



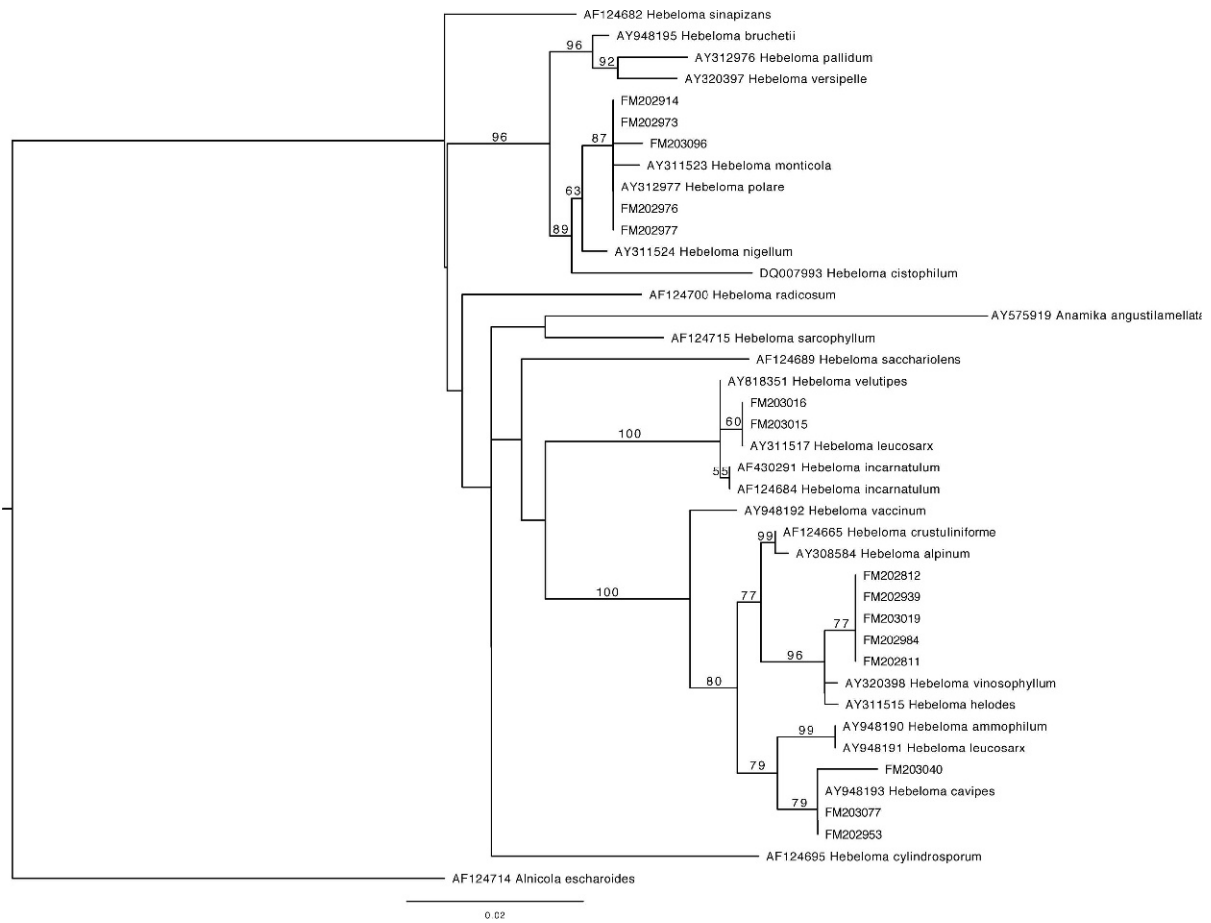
Clavulinaceae. Alignment includes 20 taxa and 809 characters. ML score = -3179.789764.



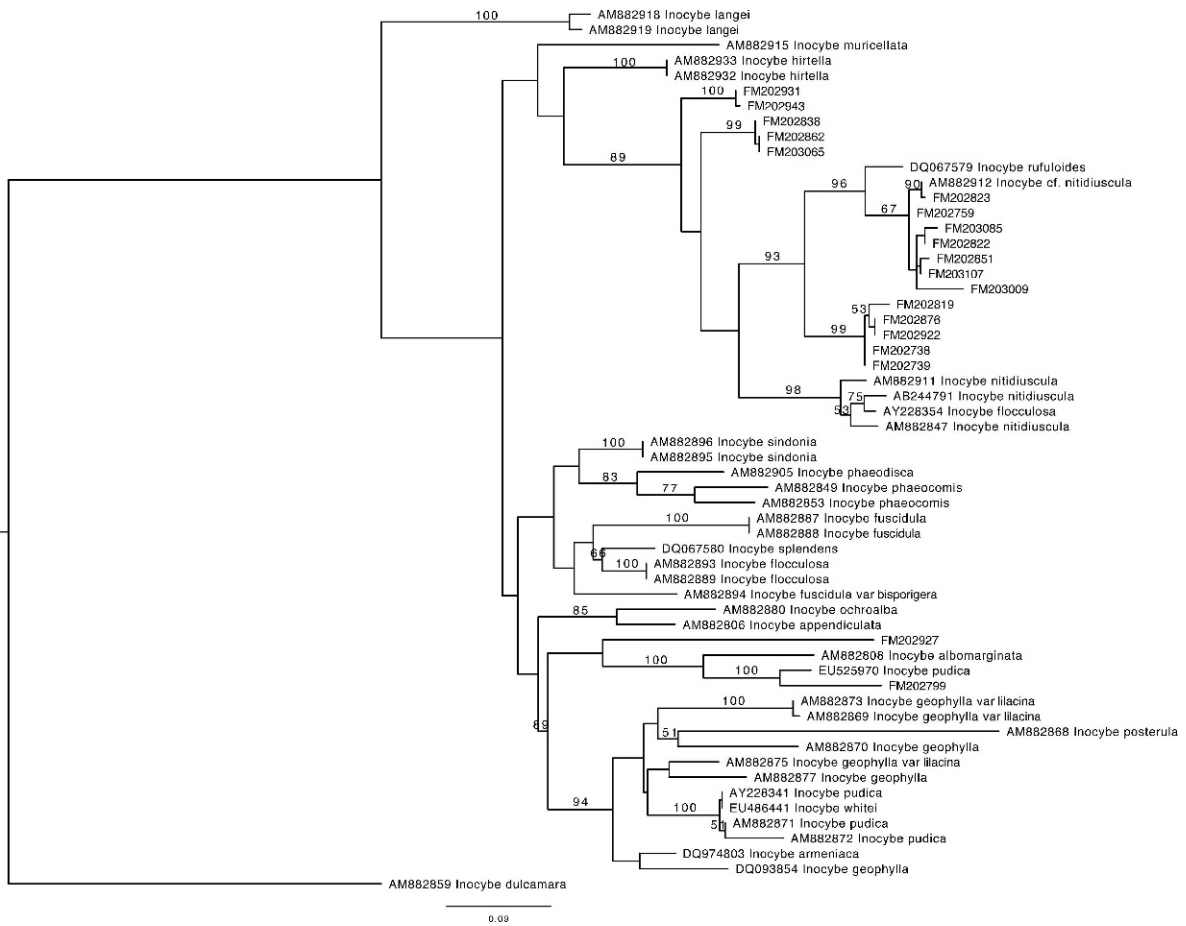
Cortinarius. Alignment includes 9 taxa and 762 characters. ML-score = -1503.519020.



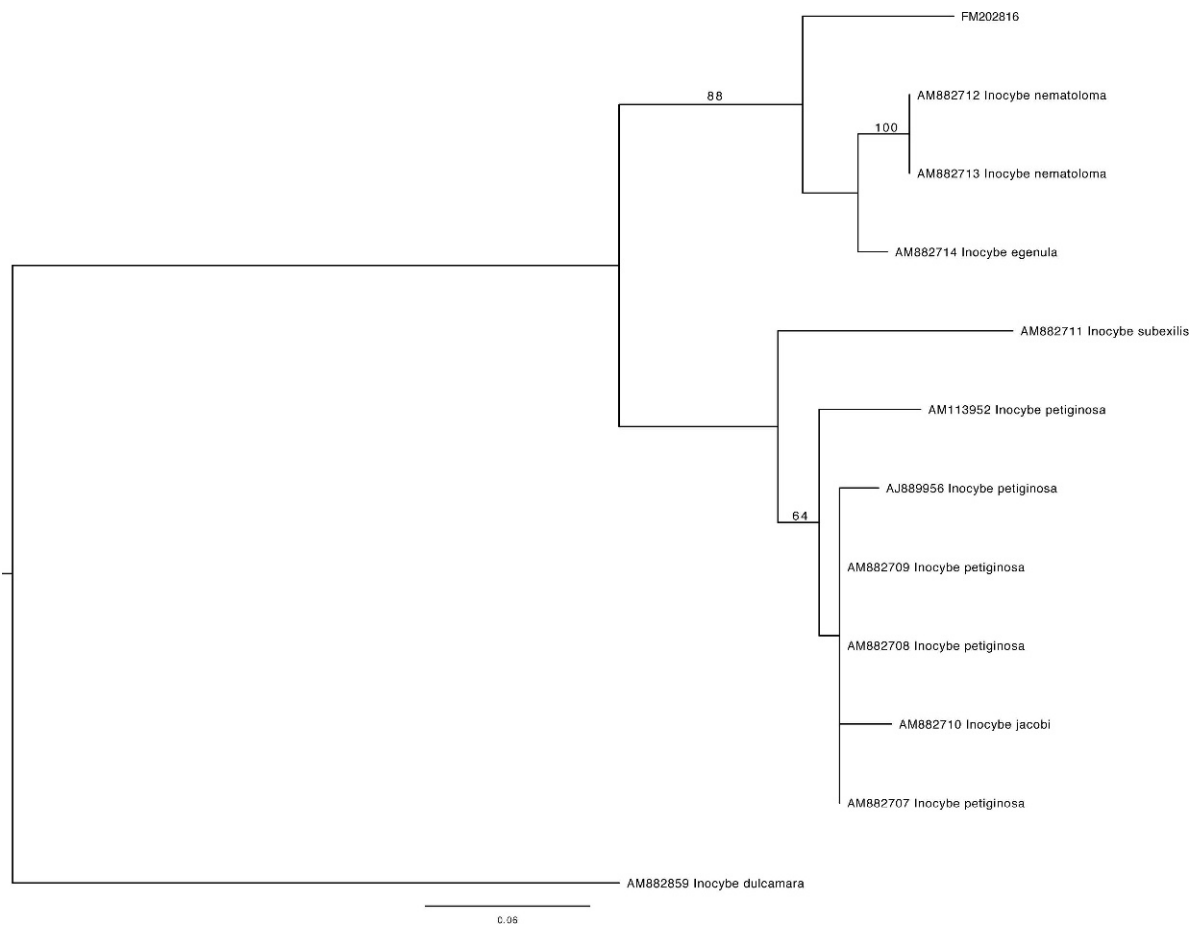
Cortinarius subgen. *Telamonia*. Alignment includes 29 taxa and 799 characters. ML-score = -2824.309263.



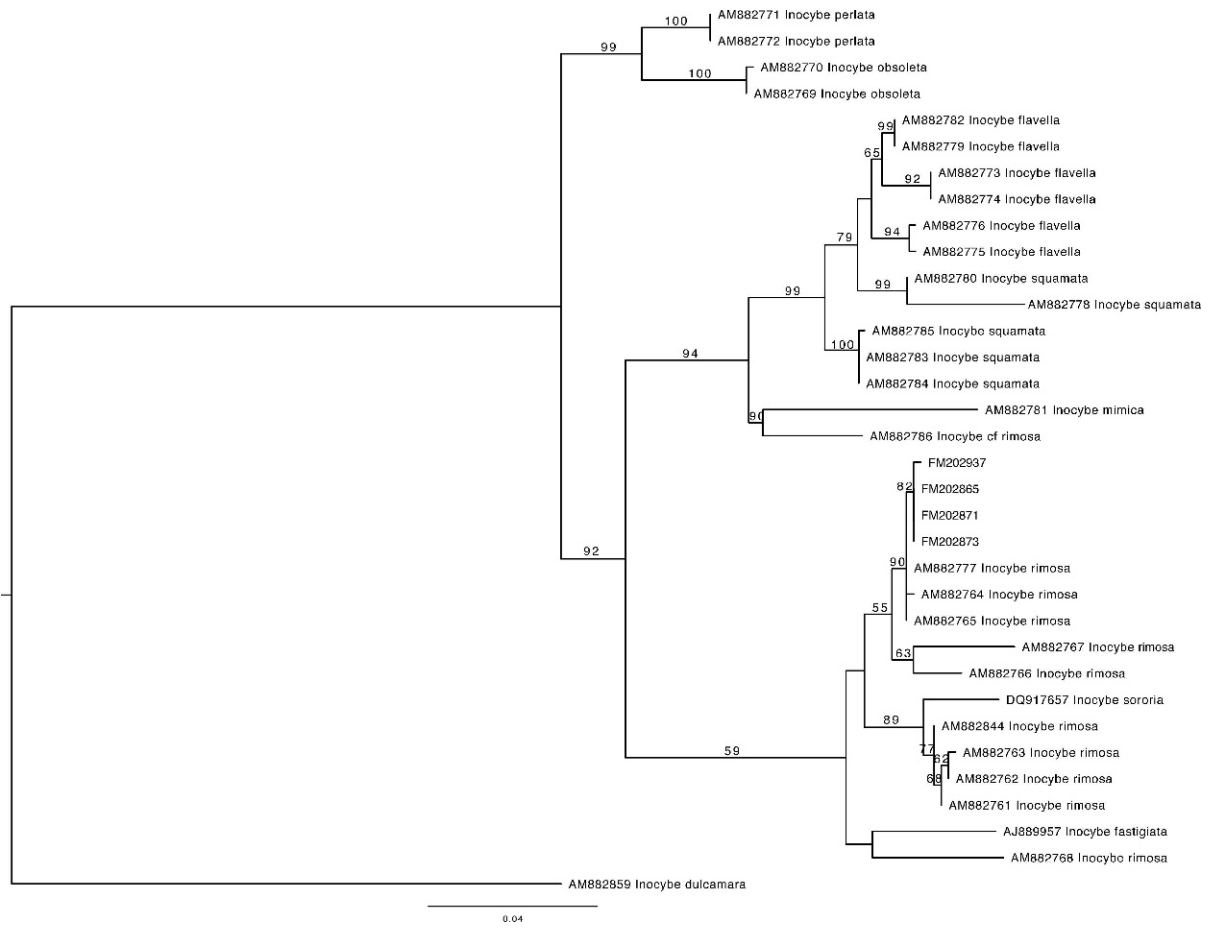
Hebeloma. Alignment includes 41 taxa and 1136 characters. ML-score = -3193.458794.



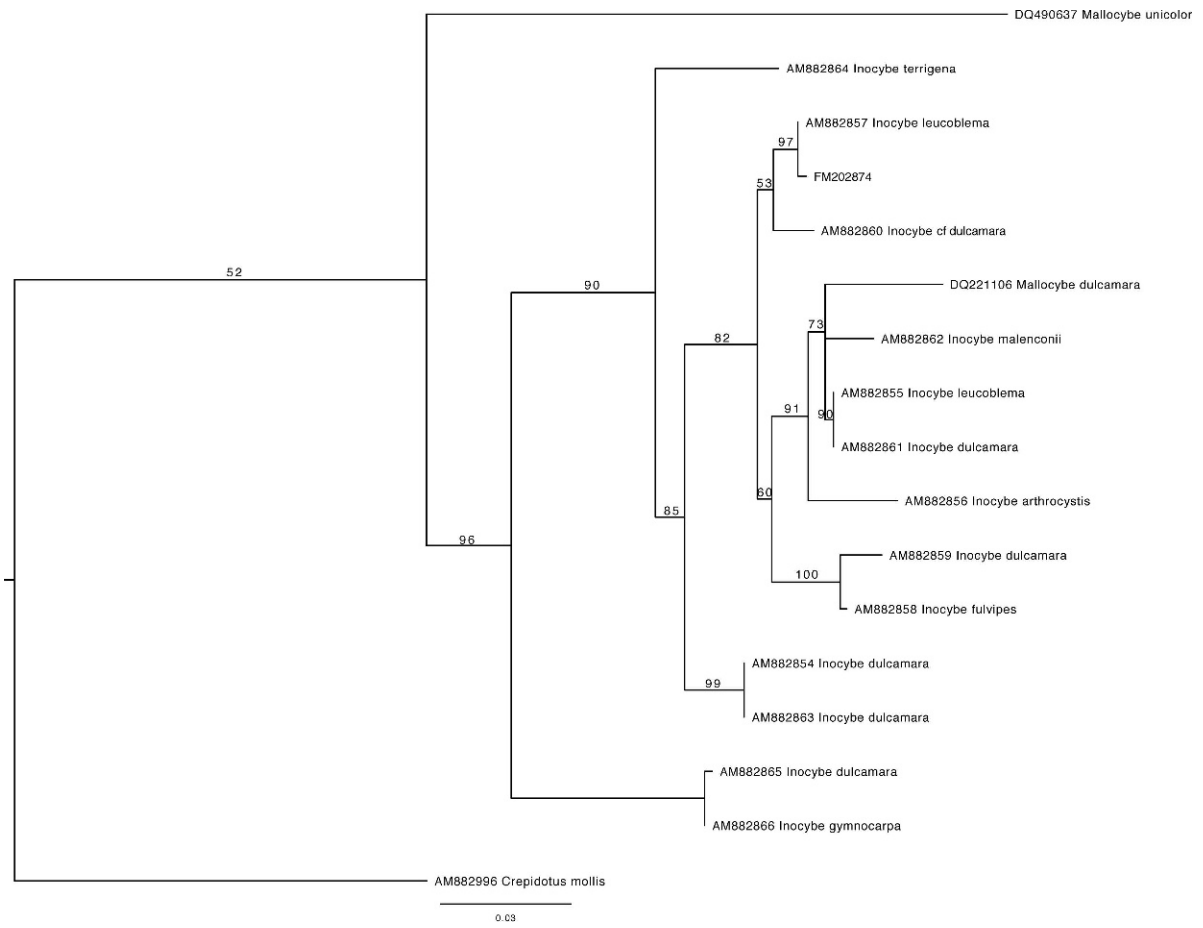
Inocybe. Alignment include 58 taxa and 880 characters. ML-score = -6348.968699.



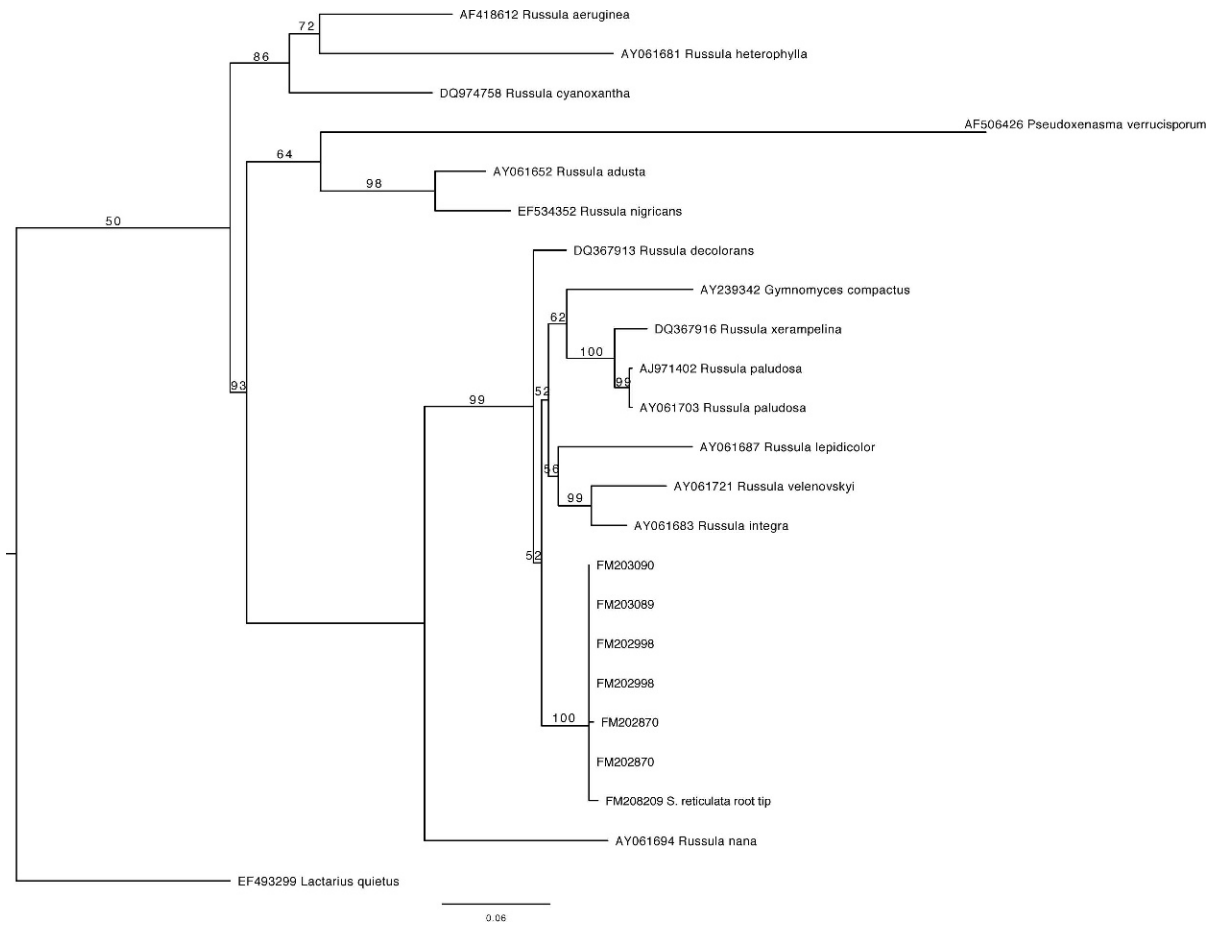
Inocybe “*petiginosa* group”. Alignment includes 12 taxa and 373 characters. ML-score = -1230.096335.



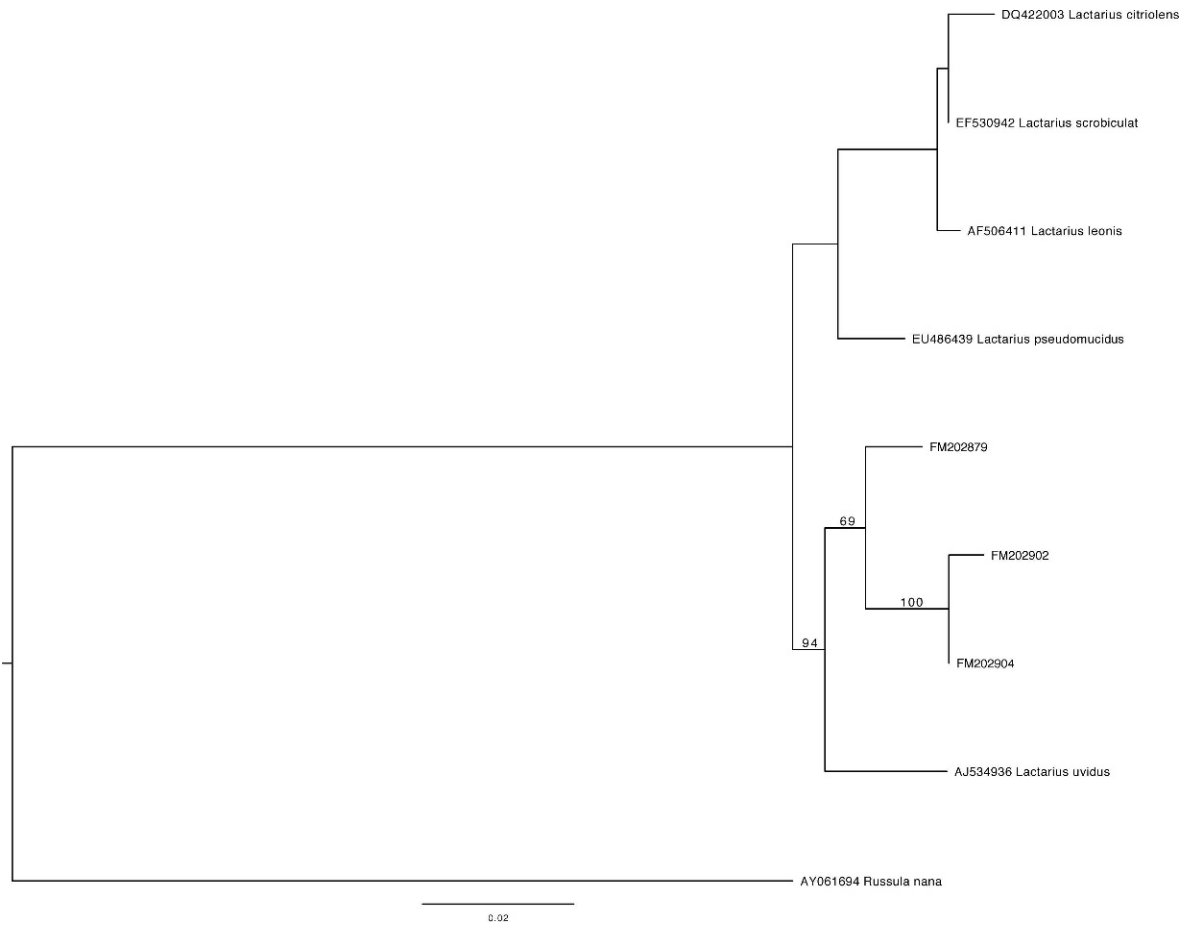
Inocybe "rimosae group". Alignment includes 34 taxa and 777 characters. ML-score = -2956.755275.



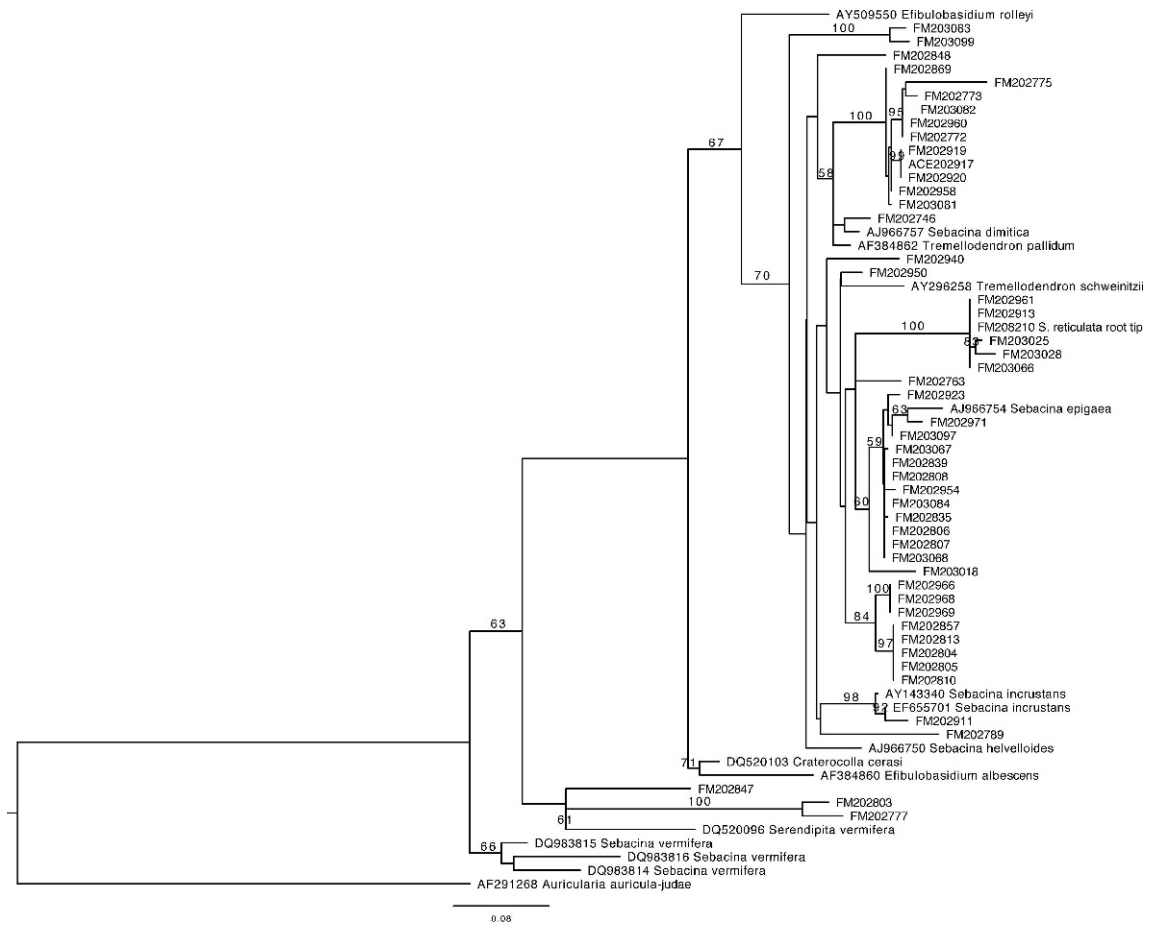
Inocybe subgen. *Mallocybe*. Alignment includes 17 taxa and 661 characters. ML-score = -2013.035473.



Russula. Alignment includes 23 taxa and 1069 characters. ML-score = -4804.377180.



Lactarius. Alignment includes 9 taxa and 716 characters. ML-score = -1505.280425.



Sebacinaceae. Alignment includes 65 taxa and 800 characters. ML-score = -5376.710425.

APPENDIX 3

Correspondence analysis using Spring and Autumn (first letter, S and A), *Salix* and *Dryas* (second letter, S and D), and year (number) to divide each cliff ledge into 5 samples (red text). Cliff ledges (letter after dot) are given according to Table 1. Species (black text) are given according to Table 2. The axis of the species are rescaled to fit the axis of the cliff ledges. Species coinciding with cliff ledges are given in the box. The SS.F06 cliff ledge has been moved a bit for sake of readability (indicated by black line).

