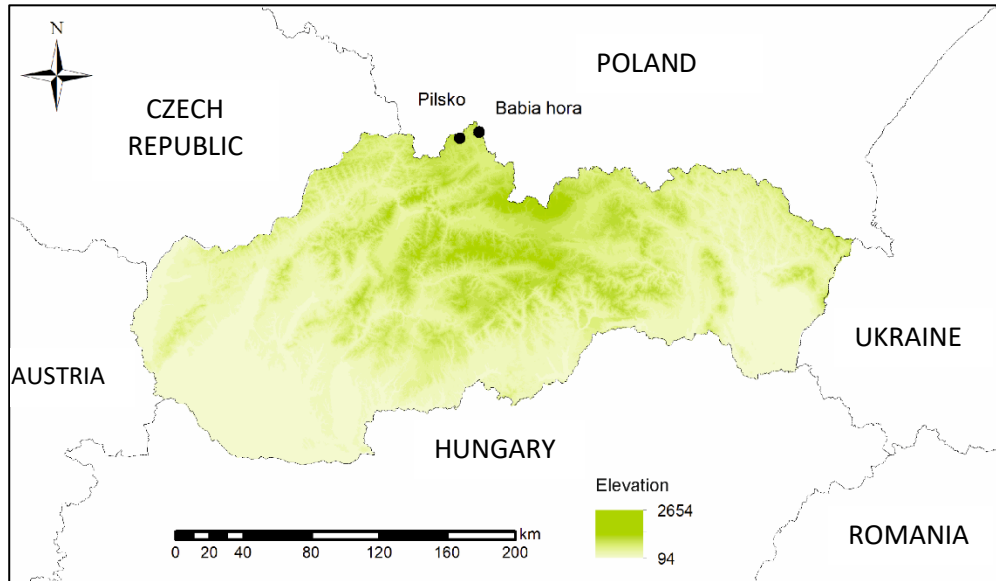


## Supplemental material for

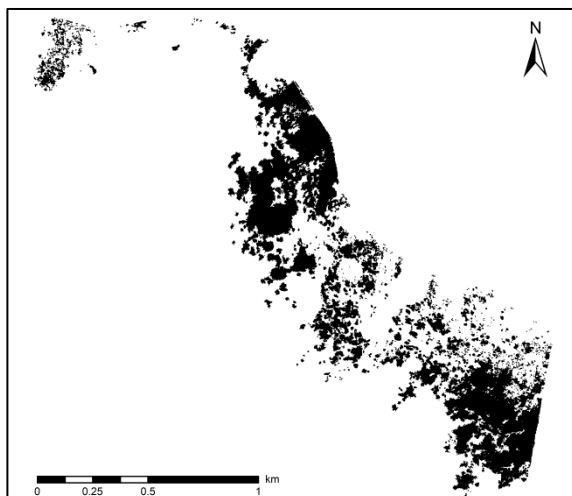
“Long-Term Changes in Dwarf Pine (*Pinus mugo* Turra) Cover and Growth in the Orava Beskid Mountains, Slovakia,” by Zuzana Parobeková, Michal Bugala, Miroslav Kardoš, Martin Dovčiak, Ivan Lukáčik, and Milan Saniga, published in *Mountain Research and Development* 38(4), 2018. (See <http://www.bioone.org/toc/mred/38/4>)

**FIGURE S1** Location of study sites (Babia hora: 49.573050, 19.529548; Pilsko: 49.528001, 19.316791). (Map by authors)



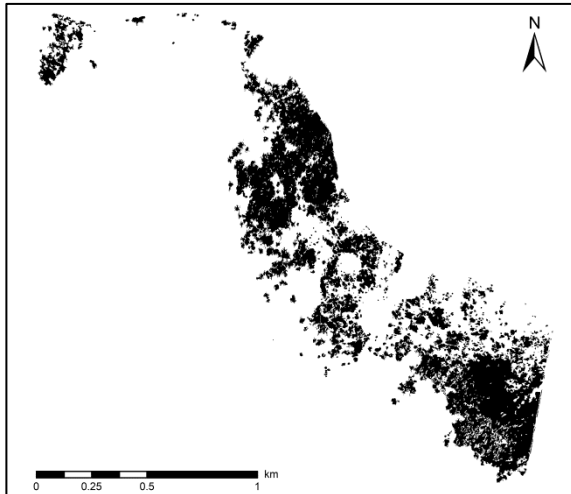
**FIGURE S2** Dwarf pine cover evaluated from aerial imagery in individual years and confusion matrixes based on training test area masks. (Maps by authors)

Babia hora, 1949



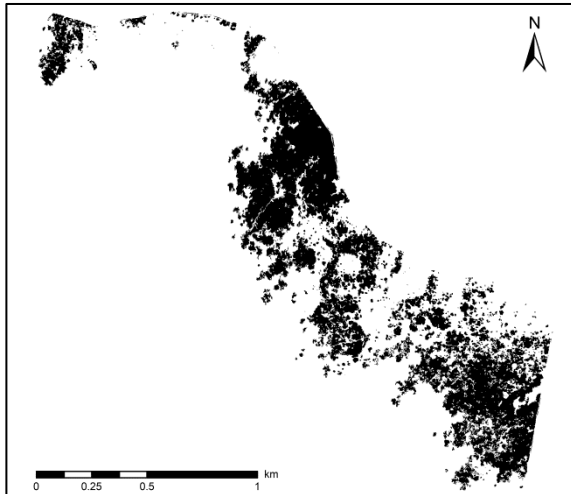
User \ Reference Class	Dwarf pine	Others	Sum
<b>Confusion Matrix</b>			
Dwarf pine	1783318	416134	2199452
Others	323449	18102847	18426296
Sum	2106767	18518981	
<b>Accuracy</b>			
Producer	0.8464714	0.9775293	
User	0.8108011	0.9824463	
Hellden	0.8282523	0.98	
Short	0.7068522	0.9607491	
KIA Per Class	0.8281455	0.7892773	
<b>Totals</b>			
Overall Accuracy	0.9641427		
KIA	0.8082444		

Babia hora, 1973



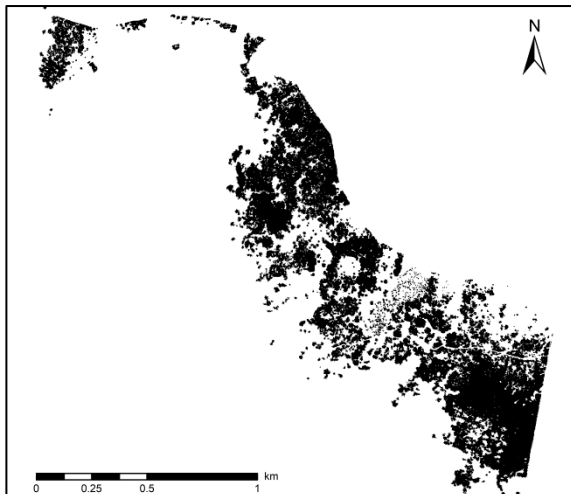
User \ Reference Class	Dwarf pine	Others	Sum
<b>Confusion Matrix</b>			
Others	367928	3289013	3656941
Dwarf pine	1820579	310794	2132373
Sum	2188507	3599807	
<b>Accuracy</b>			
Producer	0.8318817	0.9136637	
User	0.8541813	0.8993891	
Hellden	0.8428841	0.9064702	
Short	0.7284353	0.829	
KIA Per Class	0.7338975	0.7655307	
<b>Totals</b>			
Overall Accuracy	0.8827427		
KIA	0.7493804		

Babia hora, 1992



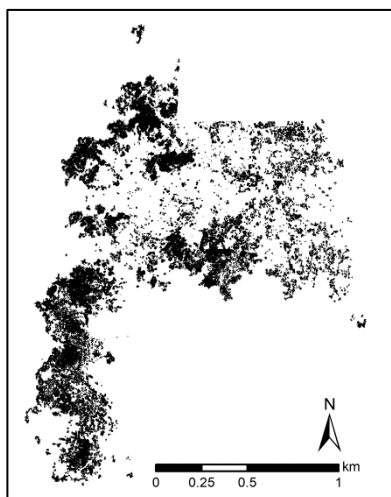
User \ Reference Class	Dwarf pine	Others	Sum
<b>Confusion Matrix</b>			
Others	258947	3217397	3476344
Dwarf pine	2173847	338382	2512229
Sum	2432794	3555779	
<b>Accuracy</b>			
Producer	0.8935598	0.9048360	
User	0.8653061	0.9255117	
Hellden	0.8792060	0.915	
Short	0.7844493	0.8434150	
KIA Per Class	0.8166393	0.7731511	
<b>Totals</b>			
Overall Accuracy	0.9002552		
KIA	0.7943004		

Babia hora, 2013



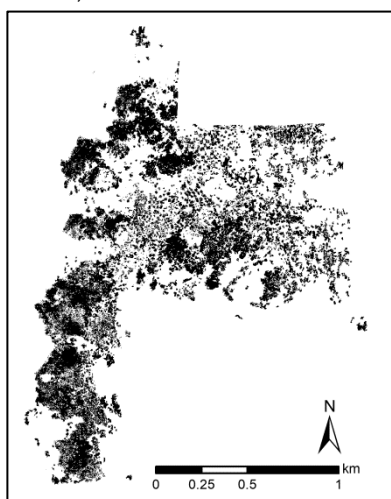
User \ Reference Class	Dwarf pine	Others	Sum
<b>Confusion Matrix</b>			
Dwarf pine	2412508	521869	2934377
Others	306774	19550143	19856917
Sum	2719282	20072012	
<b>Accuracy</b>			
Producer	0.8871857	0.974	
User	0.8221534	0.9845508	
Hellden	0.8534324	0.9792471	
Short	0.7443368	0.9593380	
KIA Per Class	0.8705144	0.798	
<b>Totals</b>			
Overall Accuracy	0.9636421		
KIA	0.8327138		

Pilsko, 1973



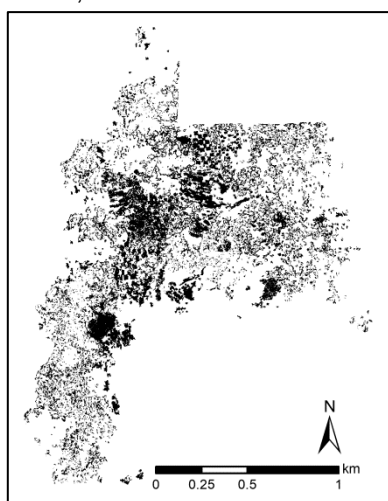
User \ Referenc...	Dwarf pine	Others	Sum
<b>Confusion Matrix</b>			
Dwarf pine	2269129	1145398	3414527
Others	528604	14089283	14617887
Sum	2797733	15234681	
<b>Accuracy</b>			
Producer	0.811	0.9248164	
User	0.6645515	0.9638385	
Hellden	0.7305325	0.944	
Short	0.5754638	0.8938037	
KIA Per Class	0.767	0.603	
<b>Totals</b>			
Overall Accuracy	0.9071671		
KIA	0.6751233		

Pilsko, 1992



User \ Reference Class	Dwarf pine	Others	Sum
<b>Confusion Matrix</b>			
Dwarf pine	2535969	1209101	3745070
Others	504619	15475009	15979628
unclassified	0	0	0
Sum	3040588	16684110	
<b>Accuracy</b>			
Producer	0.834	0.9275298	
User	0.6771486	0.9684211	
Hellden	0.7474497	0.9475345	
Short	0.5967423	0.9002998	
KIA Per Class	0.7951435	0.6183107	
<b>Totals</b>			
Overall Accuracy	0.9131181		
KIA	0.6956656		

Pilsko, 2013



User \ Reference Class	Dwarf pine	Others	Sum
<b>Confusion Matrix</b>			
Dwarf pine	3121883	2069581	5191464
Others	496421	14036813	14533234
Sum	3618304	16106394	
<b>Accuracy</b>			
Producer	0.8628028	0.8715056	
User	0.6013493	0.9658424	
Hellden	0.7087322	0.9162522	
Short	0.5488654	0.8454478	
KIA Per Class	0.8137942	0.5117923	
<b>Totals</b>			
Overall Accuracy	0.87		
KIA	0.6283914		