

Supplementary Table S1. DNA samples. Sample ID, group name, locality, collection date, sex, age, and haplotype of each DNA sample. The haplotypes correspond to those listed in Table 3.

Subspecies	Sample ID	Sample group name	Sample locality	Collecting date	Sex	Age	Cytb	tRNA-Glu	ND6	CR
1	<i>kawarahiba</i>	2003-5103	Kamchatka (KAM)	Ust-Bolsheretskiy District, Kamchatka	18 Jun 2003	M	Ad	h1	h1	h1
2	<i>kawarahiba</i>	2003-5111	Kamchatka (KAM)	Ust-Bolsheretskiy District, Kamchatka	19 Jun 2003	M	Ad	h2	h1	h1
3	<i>kawarahiba</i>	2003-5114	Kamchatka (KAM)	Ust-Bolsheretskiy District, Kamchatka	19 Jun 2003	M	Ad	h2	h1	h1
4	<i>sitchitoensis</i>	RYA2684	Sakhalin I. (SAK)	Nogliksky distr., Tapaupa river	14 July 2008	M	Ad	h2	h1	h1
5	<i>sitchitoensis</i>	RYA2805	Sakhalin I. (SAK)	Tymovsky distr., Malaya Tym' river	29 May 2009	M	Ad	h2	h1	h1
6	<i>sitchitoensis</i>	RYA1332	Sakhalin I. (SAK)	Poronaysky distr., Terpeniya gulf, Taranka river creek	17 July 2003	F	Ad	h3		
7	<i>sitchitoensis</i>	RYA2514	Sakhalin I. (SAK)	Dolinsky distr., Yantarnaya river creek	9 May 2008	F	Ad	h2	h1	h1
8	<i>sitchitoensis</i>	CBH3332	Sakhalin I. (SAK)	Dolinsky distr., Yantarnaya river creek	19 May 2010	M	Ad	h2	h1	h1
9	<i>sitchitoensis</i>	RYA2520	Sakhalin I. (SAK)	Dolinsky distr., Sennaya river	11 May 2008	M	Ad	h2	h1	h1
10	<i>sitchitoensis</i>	RYA3045	Sakhalin I. (SAK)	Dolinsky distr., Sovetskoye settl	9 July 2010	M	Ad	h2	h1	h1
11	<i>sitchitoensis</i>	RYA3096	Sakhalin I. (SAK)	Dolinsky distr., Sovetskoye settl	23 May 2011	F	Ad	h2	h1	h1
12	<i>sitchitoensis</i>	CBH2195	Sakhalin I. (SAK)	Dolinsky distr., Sovetskoye settl	11 May 2009	M	Ad	h2	h1	h2
13	<i>sitchitoensis</i>	RYA972	Sakhalin I. (SAK)	Korsakov distr., Lagoon Busse	15 Jun 2003	M	Ad	h4		
14	<i>sitchitoensis</i>	RYA973	Sakhalin I. (SAK)	Korsakov distr., Lagoon Busse	15 Jun 2003	F	Ad	h2		
15	<i>sitchitoensis</i>	RYA1029	Sakhalin I. (SAK)	Korsakov distr., Lagoon Busse	22 Jun 2003	M	Ad	h2		
16	<i>sitchitoensis</i>	RYA1030	Sakhalin I. (SAK)	Korsakov distr., Lagoon Busse	22 Jun 2003	M	Ad	h2		
17	<i>sitchitoensis</i>	RYA1031	Sakhalin I. (SAK)	Korsakov distr., Lagoon Busse	22 Jun 2003	M	Ad	h2		
18	<i>sitchitoensis</i>	KIL078	Sakhalin I. (SAK)	Korsakov distr., Lagoon Busse	22 Jun 2003	F	Ad	h5		
19	<i>sitchitoensis</i>	KIL079	Sakhalin I. (SAK)	Korsakov distr., Lagoon Busse	22 Jun 2003	F	Ad	h2		
20	<i>sitchitoensis</i>	KIL080	Sakhalin I. (SAK)	Korsakov distr., Lagoon Busse	22 Jun 2003	M	Ad	h2		
21	<i>sitchitoensis</i>	KIL081	Sakhalin I. (SAK)	Korsakov distr., Lagoon Busse	22 Jun 2003	M	Ad	h4		
22	<i>sitchitoensis</i>	KIL082	Sakhalin I. (SAK)	Korsakov distr., Lagoon Busse	22 Jun 2003	M	Ad	h2		
23	<i>sitchitoensis</i>	RYA1474	Sakhalin I. (SAK)	Korsakov distr., Lagoon Busse	14 Jun 2004	F	Ad	h2		
24	<i>sitchitoensis</i>	RYA1482	Sakhalin I. (SAK)	Korsakov distr., Lagoon Busse	15 Jun 2004	M	Ad	h2		
25	<i>sitchitoensis</i>	RYA1149	Sakhalin I. (SAK)	Nevel'sky distr., Kitosia river	1 July 2003	F	Ad	h2		
26	<i>sitchitoensis</i>	RYA1268	Sakhalin I. (SAK)	Nevel'sky distr., Kitosia river	9 July 2003	F	Ad	h6		
27	<i>sitchitoensis</i>	MIM214	Sakhalin I. (SAK)	Anivsky distr., Mitsulevka settl.	21 July 2010	M	Ad	h2	h1	h1
28	<i>sitchitoensis</i>	NEP454	Khabarovskiy (KHA)	Vanino (near sea coast)	15 Jun 2004	F	Ad	h2	h1	h1
29	<i>sitchitoensis</i>	NEP479	Khabarovskiy (KHA)	De-Kastri (near sea coast)	17 July 2003	M	Ad	h2	h1	h1
30	<i>ussuriensis</i>	RYA242	Primorsky (PRI)	Yakovlevsky distr., Arsenyevka river	3 May 2002	M	Ad	h7		
31	<i>ussuriensis</i>	RYA243	Primorsky (PRI)	Yakovlevsky distr., Arsenyevka river	3 May 2002	F	Ad	h8		
32	<i>ussuriensis</i>	RYA274	Primorsky (PRI)	Yakovlevsky distr., Arsenyevka river	5 May 2002	M	Ad	h8		
33	<i>ussuriensis</i>	RYA334	Primorsky (PRI)	Yakovlevsky distr., Arsenyevka river	9 May 2002	F	Ad	h8	h1	h3
34	<i>ussuriensis</i>	RYA335	Primorsky (PRI)	Yakovlevsky distr., Arsenyevka river	9 May 2002	M	Ad	h8		
35	<i>ussuriensis</i>	RYA336	Primorsky (PRI)	Yakovlevsky distr., Arsenyevka river	9 May 2002	M	Ad	h9	h1	h3
36	<i>ussuriensis</i>	RYA349	Primorsky (PRI)	Yakovlevsky distr., Arsenyevka river	11 May 2002	F	Ad	h10		
37	<i>ussuriensis</i>	RYA370	Primorsky (PRI)	Yakovlevsky distr., Arsenyevka river	12 May 2002	F	Ad	h11		
38	<i>ussuriensis</i>	RYA590	Primorsky (PRI)	Ussuriyskiy distr., Malaya Kazachka river	1 Jun 2002	F	Ad	h9		
39	<i>ussuriensis</i>	RYA701	Primorsky (PRI)	Ussuriyskiy distr., Malaya Kazachka river	6 Jun 2002	M	Ad	h8		
40	<i>clarki</i>	ULL2802	Ulleung-do I. (ULL)	Ulleung -do I., Seo-myeon, Namyang	20 May 2003	M	Ad	h12	h1	h1
41	<i>clarki</i>	ULL3546	Ulleung-do I. (ULL)	Ulleung-do I., Buk-myeon, Nari-Basin	7 Jun 2004	M	Ad	h13	h2	h1
42	<i>sitchitoensis</i>	1996-9998	Hokkaido (HOK)	Nemuro, Hokkaido	20 Jun 1996	U	U	h2	h1	h4
43	<i>minor (sitchitoensis ?)</i>	2006-0241	Hokkaido (HOK)	Matsumae, Hokkaido	16 August 2006	U	U	h2	h1	h1
44	<i>minor</i>	2006-5454	Houshu (HON)	Nagano, Honshu	29 Jun 2006	F	Ad	h2	h1	h1
45	<i>minor</i>	2003-0171	Houshu (HON)	Shiojiri-city, Nagano	8 Jun 2003	U	U	h2	h1	h1
46	<i>minor</i>	1988-0496	Houshu (HON)	Chiba, Honshu	1 Jun 1988	U	U	h2	h1	h1
47	<i>minor</i>	2000-0074	Miyakejima I. (MIY)	Miyakejima I., Izu Is., Tokyo	21 Jun 1998	U	U	h2	h1	h1
48	<i>minor</i>	1995-0233	Miyakejima I. (MIY)	Miyakejima I., Izu Is., Tokyo	28 April 1995	M?	U	h2	h1	h1
49	<i>minor</i>	2000-0224	Nakanoshima (NAK)	Nakanoshima I., Kagashima	24 Jun 2000	U	Juv	h14	h1	h1
50	<i>minor</i>	1998-0162	Oki Is. (OKI)	Dogo I., Oki Is., Shimane	28 July 1998	U	U	h2	h1	h1
51	<i>kittlitzii</i>	1997-0234	Ogasawara (OGA)	Hahajima I., Bonin Is.	26 August 1996		Ad	h15	h1	h5
52	<i>kittlitzii</i>	2AA00944	Ogasawara (OGA)	Anejima I., Bonin Is.	11 October 2007	F	Ad	h15		
53	<i>kittlitzii</i>	2AA01134	Ogasawara (OGA)	Mukou-jima I., Bonin Is.	6 March 2011	F	Ad	h15	h1	h5
54	<i>kittlitzii</i>	No.34	Ogasawara (OGA)	Meijima I., Bonin Is.	14 March 2011	M	Ad	h15	h1	h5
55	<i>kittlitzii</i>	2X21938	Ogasawara (OGA)	Minami-iwoto I., Volcano Is.	19 Jun 2007	M	Ad	h15	h1	h5
56	<i>kittlitzii</i>	6	Ogasawara (OGA)	Minami-iwoto I., Volcano Is.	19 Jun 2007	M	Ad	h15	h1	h5
57	<i>kittlitzii</i>	12	Ogasawara (OGA)	Minami-iwoto I., Volcano Is.	19 Jun 2007	F	Ad	h15	h1	h5
*	<i>sinica</i>		Szechuan (SZE)	Szechuan, SE China				h8		

*Sequence of *Chloris sinica sinica* (accession no. L76592) published by Arnaiz-Villena et al. (1998).

Supplementary Table S2. Specimens of Oriental greenfinch males.

Subspecific name on the label	Type specimen	Museum ID* ⁵	Museum No.	Sample group name	Collecting locality	Collecting date
1 –		YIO	YIO-51878	Kuril Is.	Nasauki, Paramushir I., Kuril Is.	16 May 1928
2 –		YIO	YIO-51879	Kuril Is.	Nasauki, Paramushir I., Kuril Is.	16 May 1928
3 <i>kawarahiba</i>		YIO	YIO-51886	Kuril Is.	Nasauki, Paramushir I., Kuril Is.	21 Jun 1928
4 –		YIO	YIO-51881	Kuril Is.	Nasauki, Paramushir I., Kuril Is.	17 May 1928
5 <i>kawarahiba</i>		YIO	YIO-51893	Kuril Is.	Paramushir I., Kuril Is.	1 July 1934
6 <i>kawarahiba</i>		YIO	YIO-51897	Kuril Is.	Nasauki, Paramushir I., Kuril Is.	August 1928
7 <i>kawarahiba</i>		YIO	YIO-51889	Kuril Is.	Iturup I., Kuril Is.	22 July 1931
8 <i>kawarahiba</i>		YIO	YIO-51890	Kuril Is.	Toshimoi, Iturup I., Kuril Is.	8 October 1933
9 <i>kawarahiba</i>		YIO	YIO-51891	Kuril Is.	Toshimoi, Iturup I., Kuril Is.	10 October 1933
10 <i>kawarahiba</i>		YIO	YIO-51894	Kuril Is.	Shumshu I., Kuril Is.	August 1903
11 <i>kawarahiba</i>		YIO	YIO-51895	Kuril Is.	Iturup I., Kuril Is.	26 July 1907
12 <i>sitchitoensis</i>		YIO	YIO-51901	Sakhalin	Sakhalin I.	4 May 1926
13 <i>sitchitoensis</i>		YIO	YIO-51902	Sakhalin	Sakhalin I.	9 May 1926
14 <i>sitchitoensis</i>		YIO	YIO-51903	Sakhalin	Sakhalin I.	9 May 1926
15 <i>sitchitoensis</i>		YIO	YIO-51899	Sakhalin	Sakhalin I.	19 April 1926
16 <i>sitchitoensis</i>		YIO	YIO-51906	Sakhalin	Sakhalin I.	19 May 1926
17 <i>sitchitoensis</i>		YIO	YIO-51907	Sakhalin	Sakhalin I.	9 Jun 1932
18 <i>sitchitoensis</i>		YIO	YIO-51909	Sakhalin	Sakhalin I.	1 August 1906
19 <i>lönnerbergi</i> * ¹		YIO	YIO-51911	Sakhalin	Sakhalin I.	15 May 1926
20 <i>lönnerbergi</i>		YIO	YIO-51914	Sakhalin	Sakhalin I.	5 July 1927
21 <i>lönnerbergi</i>		YIO	YIO-51917	Sakhalin	Sakhalin I.	10 May 1928
22 <i>lönnerbergi</i>		YIO	YIO-51919	Sakhalin	Sakhalin I.	12 May 1928
23 <i>lönnerbergi</i>		YIO	YIO-51920	Sakhalin	Sakhalin I.	15 May 1928
24 <i>lönnerbergi</i>		YIO	YIO-51921	Sakhalin	Sakhalin I.	20 May 1928
25 <i>lönnerbergi</i>	Type	YIO	YIO-00152	Sakhalin	Yuzhno-Sakhalinsk, Sakhalin I.	22 May 1926
26 <i>sichitoensis</i>		YIO	YIO-51466	Hokkaido	Sapporo, Hokkaido	26 May 1940
27 <i>sichitoensis</i>		YIO	YIO-51470	Hokkaido	Sapporo, Hokkaido	Jun 1943
28 <i>sichitoensis</i>		YIO	YIO-51471	Hokkaido	Uruga, Hokkaido	May 1950
29 <i>sichitoensis</i>		YIO	YIO-51475	Hokkaido	Hokkaido	16 May 1946
30 <i>sichitoensis</i>		YIO	YIO-51478	Hokkaido	Hokkaido	31 May 1946
31 <i>minor</i>		YIO	YIO-51481	Hokkaido	Hokkaido	6 November 1928
32 <i>minor</i>		YIO	YIO-51485	Hokkaido	Hokkaido	9 October 1928
33 <i>minor</i>		YIO	YIO-51487	Hokkaido	Hokkaido	10 October 1928
34 <i>minor</i>		YIO	YIO-51490	Hokkaido	Hokkaido	10 November 1928
35 <i>minor</i>		YIO	YIO-51488	Hokkaido	Hokkaido	10 November 1928
36 –		YIO	YIO-72085	Hokkaido	Makubetsu-city, Hokkaido	20 Jun 2014
37 <i>chaborovi</i>		YIO	YIO-51924	NE China	North Manchuria	6 Jun 1935
38 <i>chaborovi</i>		YIO	YIO-51926	NE China	North Manchuria	8 Jun 1935
39 <i>chaborovi</i>		YIO	YIO-51927	NE China	North Manchuria	9 Jun 1935
40 <i>chaborovi</i>		YIO	YIO-51930	NE China	North Manchuria	6 July 1935
41 <i>chaborovi</i>		YIO	YIO-51931	NE China	North Manchuria	16 July 1935
42 <i>chaborovi</i>		YIO	YIO-51932	NE China	North Manchuria	16 July 1935
43 <i>ussuriensis</i>		YIO	YIO-51936	NE China	South Manchuria	4 April 1926
44 <i>ussuriensis</i>		YIO	YIO-51937	NE China	South Manchuria	? January 1926
45 <i>sinica</i>		YIO	YIO-51944	SE China	Nanjing, Jiangsu, China	25 November 1905
46 <i>sinica</i>		YIO	YIO-51946	SE China	Peking, China	6 November 1943
47 <i>sinica</i>		YIO	YIO-51947	SE China	Peking, China	6 November 1943
48 <i>tschiliensis</i> * ²		YIO	YIO-51949	SE China	Tianjin, Chia	22 February 1922
49 <i>sinica</i>		YIO	YIO-51944	SE China	Nanjing, Jiangsu, China	15 January ?
50 <i>ussuriensis</i>		YIO	YIO-51967	Korea	Riuganpo, Korea	20 April 1929
51 <i>ussuriensis</i>		YIO	YIO-51968	Korea	Riuganpo, Korea	April 1929
52 –		YIO	YIO-51971	Korea	Riuganpo, Korea	20 April 1929
53 –		YIO	YIO-51973	Korea	Riuganpo, Korea	20 May 1929
54 –		YIO	YIO-51975	Korea	Riuganpo, Korea	27 May 1929
55 –		YIO	YIO-51979	Korea	Kin Kua, Korea	25 November 1929
56 <i>ussuriensis</i>		YIO	YIO-51990	Korea	Seoul, Korea	13 December 1926
57 <i>ussuriensis</i>		YIO	YIO-51991	Korea	Seoul, Korea	13 December 1926
58 <i>ussuriensis</i>		YIO	YIO-51992	Korea	Seoul, Korea	April 1927
59 <i>ussuriensis</i>		YIO	YIO-51996	Korea	Yeosu-city, Korea	6 March 1930

60	<i>ussuriensis</i>		YIO	YIO-51997	Korea	Yeosu-city, Korea	6 March 1930
61	<i>ussuriensis</i>		YIO	YIO-51998	Korea	Yeosu-city, Korea	9 March 1930
62	<i>clarki</i>	Type	YIO	YIO-00132	Ulleung-do I.	Ulleung-do I., Korea	19 April 1920
63	<i>minor</i>		YIO	YIO-51573	Honshu	Ichikawa-city, Honshu	3 Jun 1980
64	<i>minor</i>		YIO	YIO-51577	Honshu	Ibaraki, Japan	May 1984
65	<i>minor</i>		YIO	YIO-51578	Honshu	Tokyo, Japan	2 July 1984
66	<i>minor</i>		YIO	YIO-72005	Honshu	Chiba, Japan	1 April 2014
67	<i>minor</i>		YIO	YIO-51697	Honshu	OkI Is.	1-2 April 1941
68	<i>minor</i>		YIO	YIO-51729	Honshu	Saga, Kyushu	28 March 1958
69	<i>tokumii</i> *3	Type	YIO	YIO-00114	Honshu	Saga, Kyushu	5 March 1947
70	<i>minor</i>		YIO	YIO-51592	Honshu	O-minato, Aomori, Honshu	19 April 1951
71	<i>minor</i>		YIO	YIO-51641	Honshu	Iwafune-gun, Niigata, Honshu	2 April 1926
72	<i>minor</i>		YIO	YIO-51642	Honshu	Iwafune-gun, Niigata, Honshu	21 April 1926
73	<i>minor</i>		YIO	YIO-51644	Honshu	Tottori-city, Tottori, Honshu	12 April 1926
74	<i>minor</i>		YIO	YIO-64862	Honshu	Fukaya-city, Saitama, Honshu	12 Jun 1996
75	<i>minor</i>		YIO	YIO-65565	Honshu	Sanda, Hyogo, Honshu	11 May 2008
76	<i>minor</i>		YIO	YIO-51561	Honshu	Kamakura, Kanagawa, Honshu	6 April 1884
77	<i>minor</i>		YIO	YIO-51738	Izu Is.	Toshima I., Izu Is.	8 April 1934
78	<i>minor</i>		YIO	YIO-51739	Izu Is.	Toshima I., Izu Is.	8 April 1934
79	<i>minor</i>		YIO	YIO-51740	Izu Is.	Toshima I., Izu Is.	9 April 1934
80	<i>minor</i>		YIO	YIO-51741	Izu Is.	Toshima I., Izu Is.	9 April 1934
81	<i>minor</i>		YIO	YIO-51744	Izu Is.	Toshima I., Izu Is.	12 April 1934
82	<i>minor</i>		YIO	YIO-51752	Izu Is.	Miyakejima I., Izu Is.	8 Jun 1934
83	–		YIO	YIO-51756	Izu Is.	Miyakejima I., Izu Is.	4 May 1887
84	<i>sitchitoensis</i>		YIO	YIO-51759	Izu Is.	Hachijojima I., Izu Is.	27 May 1922
85	<i>sitchitoensis</i>		YIO	YIO-51780	Izu Is.	Hachijojima I., Izu Is.	23 May 1924
86	<i>sitchitoensis</i>		YIO	YIO-51782	Izu Is.	Hachijojima I., Izu Is.	6 March 1925
87	<i>sitchitoensis</i>	Type	YIO	YIO-00110	Izu Is.	Hachijojima I., Izu Is.	30 March 1923
88	<i>affinis</i> *3		YIO	YIO-52001	Cheju-do I.	Seo Lo Ho, Cheju-do I., Korea	17 March 1930
89	<i>affinis</i>		YIO	YIO-52002	Cheju-do I.	Seo Lo Ho, Cheju-do I., Korea	30 March 1930
90	<i>affinis</i>		YIO	YIO-52005	Cheju-do I.	Seo Lo Ho, Cheju-do I., Korea	March 1930
91	<i>affinis</i>		YIO	YIO-52010	Cheju-do I.	Cheju-do I., Korea	12 April 1928
92	<i>affinis</i>		YIO	YIO-52013	Cheju-do I.	Cheju-do I., Korea	15 October 1928
93	<i>affinis</i>		YIO	YIO-52032	Cheju-do I.	Cheju-do I., Korea	29 May 1929
94	<i>affinis</i>		YIO	YIO-52038	Cheju-do I.	Cheju-do I., Korea	15 April 1930
95	<i>affinis</i>		YIO	YIO-52041	Cheju-do I.	Cheju-do I., Korea	27 May 1930
96	<i>affinis</i>		YIO	YIO-52015	Cheju-do I.	Cheju-do I., Korea	9 April 1929
97	<i>affinis</i>		YIO	YIO-52017	Cheju-do I.	Cheju-do I., Korea	15 April 1929
98	<i>affinis</i>		YIO	YIO-52019	Cheju-do I.	Cheju-do I., Korea	15 April 1929
99	<i>affinis</i>		YIO	YIO-52021	Cheju-do I.	Cheju-do I., Korea	10 April 1929
100	<i>affinis</i>		YIO	YIO-52025	Cheju-do I.	Cheju-do I., Korea	19 April 1929
101	<i>affinis</i>	Type	YIO	YIO-00127	Cheju-do I.	Cheju-do I., Korea	6 April 1926
102	<i>kittlitzii</i>	Type	BMNH	98.11.1.60	Ogasawara Is.	Nakando-jima I., Bonin Is. *4	14 Jun 1889
103	<i>kittlitzii</i>		YIO	YIO-00103	Ogasawara Is.	Kita-Iwoto I., Volcano Is.	17 March 1926
104	<i>kittlitzii</i>		YIO	YIO-51823	Ogasawara Is.	Ogasawara Is.	25 January 1893
105	<i>kittlitzii</i>		YIO	YIO-51824	Ogasawara Is.	Ogasawara Is.	–
106	<i>kittlitzii</i>		YIO	YIO-51826	Ogasawara Is.	Ogasawara Is.	1936
107	<i>kittlitzii</i>		YIO	YIO-51827	Ogasawara Is.	Ogasawara Is.	12 November 1925
108	<i>kittlitzii</i>		YIO	YIO-51839	Ogasawara Is.	Ogasawara Is.	10 November 1925
109	<i>kittlitzii</i>		YIO	YIO-51840	Ogasawara Is.	Ogasawara Is.	11 November 1925
110	<i>kittlitzii</i>		YIO	YIO-51848	Ogasawara Is.	Kita-Iwoto I., Volcano Is.	April 1927
111	<i>kittlitzii</i>		YIO	YIO-51871	Ogasawara Is.	Kita-Iwoto I., Volcano Is.	26 October 1927
112	<i>kittlitzii</i>		YIO	YIO-51872	Ogasawara Is.	Kita-Iwoto I., Volcano Is.	25 November 1926
113	<i>kittlitzii</i>		YIO	YIO-51843	Ogasawara Is.	Kita-Iwoto I., Volcano Is.	10 February 1926
114	<i>kittlitzii</i>		YIO	YIO-51820	Ogasawara Is.	Mukojima I., Bonin Is.	May 1931

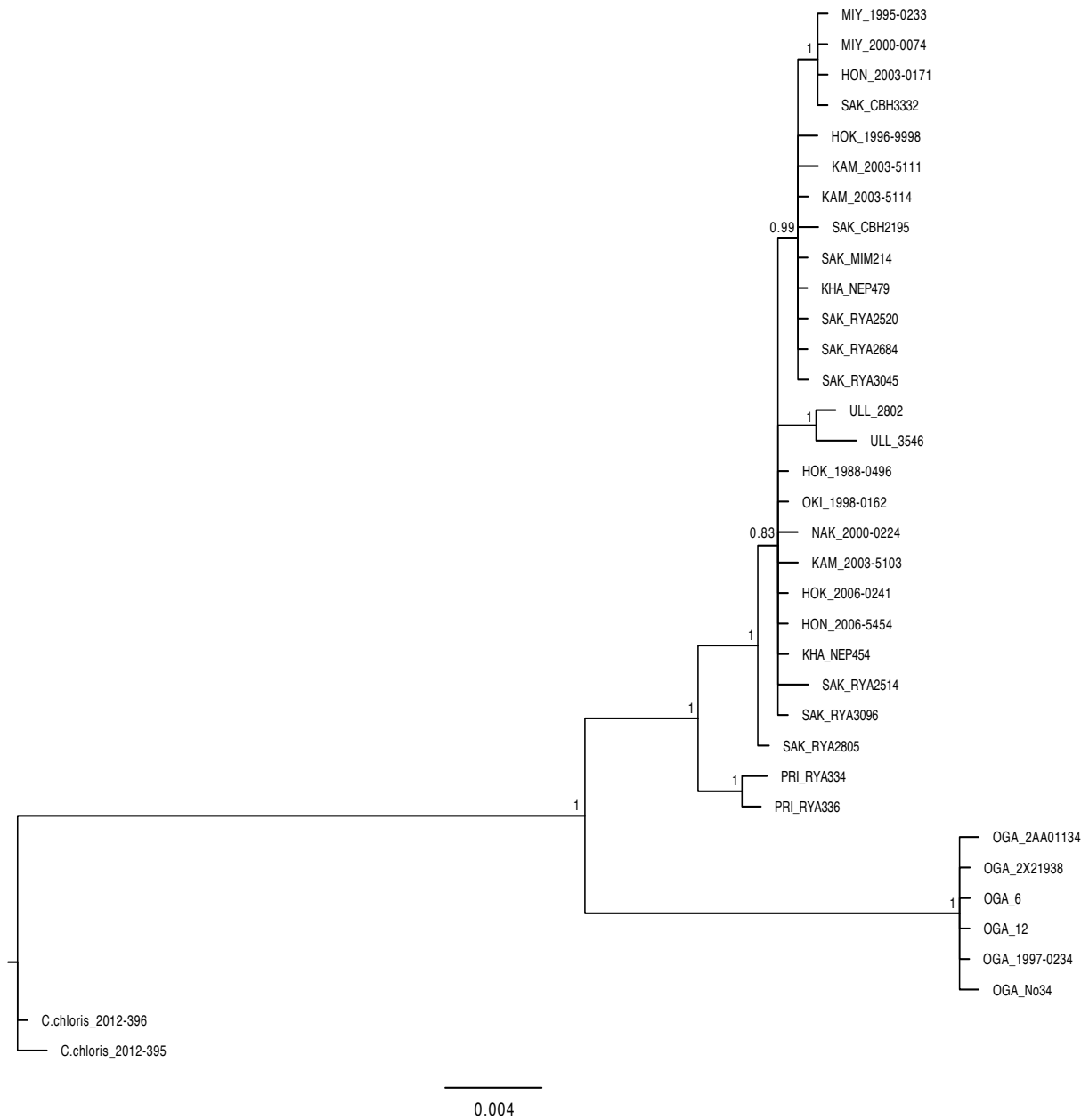
*1 *Chloris sinica lönnbergi* Momiyama, 1928 is synonymized with *C. s. minor* (Dement'ev and Gladkov, 1954).

*2 *Chloris sinica tschiliensis* Jacobi, 1923 is synonymized with *C. s. sinica* (Paynter, 1968).

*3 *Chloris sinica tokumii* Mishima, 1961 and *Chloris sinica affinis* Momiyama, 1927 are synonymized with *C. s. minor* (del Hoyo, 2010; Yamashina, 1934).

*4 Probably incorrectly described as "Nakandoshima." Nakoudoshima is the correct term.

*5 YIO is the museum code for the Yamashina Institute for Ornithology, Abiko, Japan. NHM stands for the Natural History Museum, Tring, UK.



Supplementary Figure S1. Phylogeny of the Oriental greenfinches based on the mitochondrial cytochrome *b*, NADH subunit 6, tRNA-Glu, and the control region inferred by MrBayes software. The European greenfinch *Chloris chloris* was used as an outgroup species. Molecular phylogenies were determined using Bayesian inference according to the Hasegawa, Kishino and Yano model using concatenated DNA encoding mitochondrial *Cytb*, ND6, tRNA-Glu and CR. Support values at nodes indicate posterior probabilities (PPs). *PP \geq 0.95. Area codes are listed in Table 2.