

Figure S1. Examples of living tags (outlined in circles) and right fore-flipper tag scars (outlined in squares) on 12 head-started Kemp's ridley turtles (*Lepidochelys kempii*) from the 1984–1992 year-classes documented nesting in south Texas between 2001 and 2013. Photographs by the National Park Service.

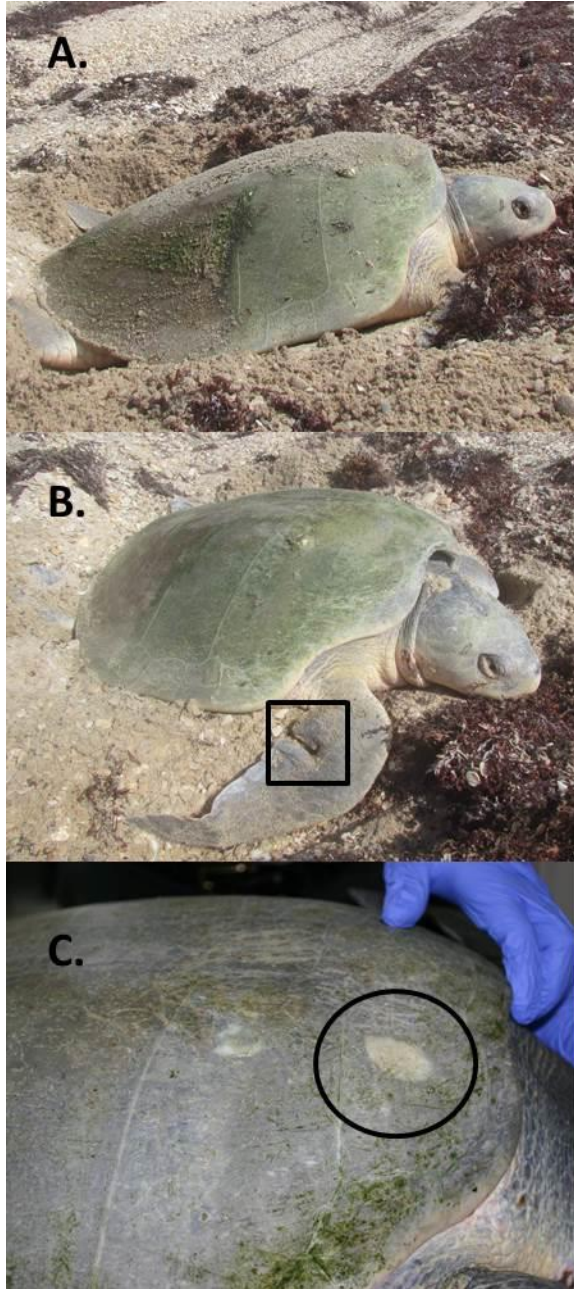


Figure S2. Head-started Kemp's ridley turtle (*Lepidochelys kempii*) documented nesting in south Texas during 2012 showing the (A) carapace before scrubbing, (B) carapace after superficial scrubbing (note right fore-flipper tag scar outlined in square), and (C) carapace after thorough scrubbing (note living tag outlined circle). Photographs by the National Park Service.