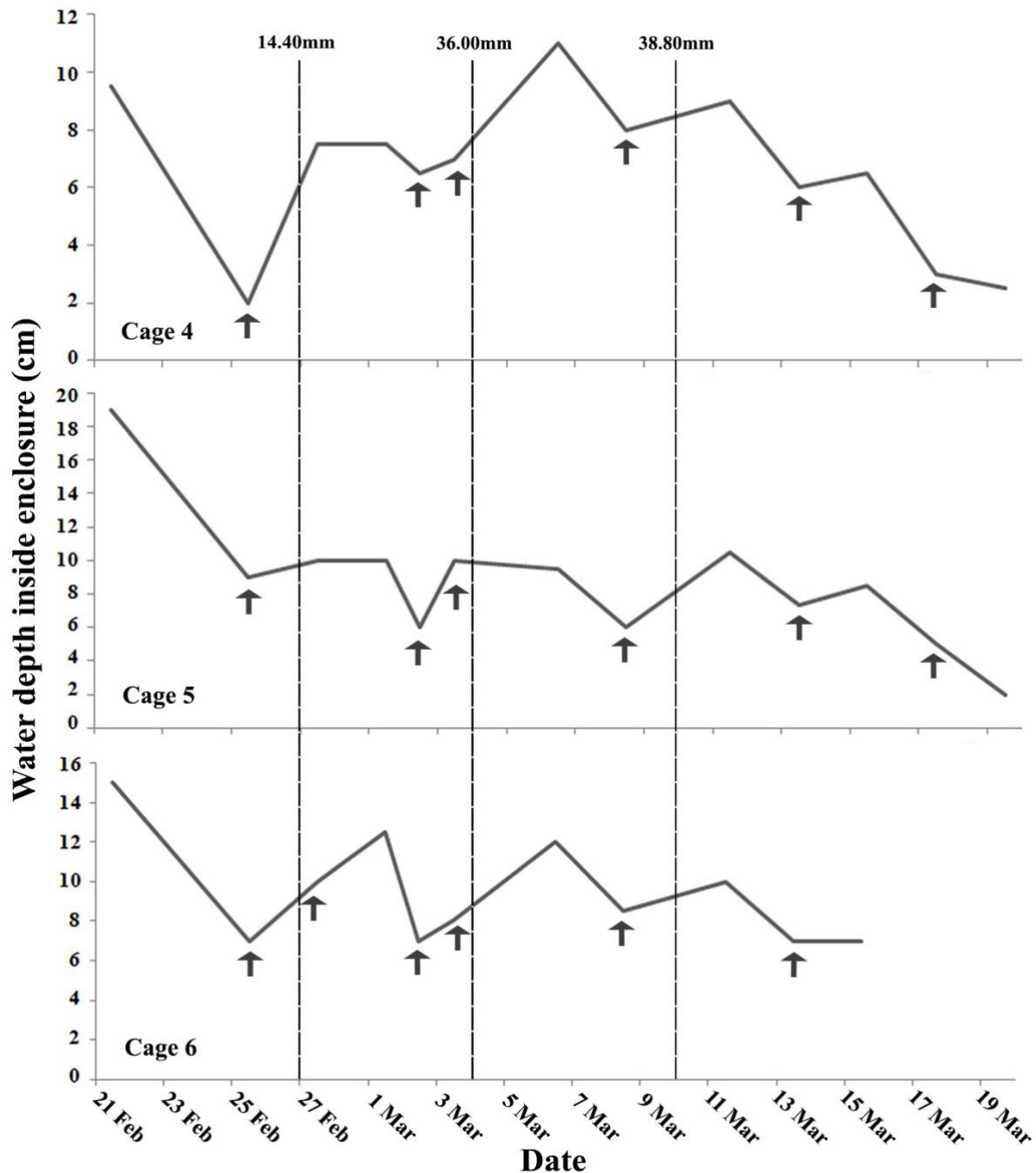


Online supporting information for: Bardier C., Maneyro R., Toledo L.F. 2020. The correlates of in situ larval survivorship of the threatened South American toad *Melanophryniscus montevidensis* (Anura, Bufonidae). South American Journal of Herpetology 17: 33–42. <http://doi.org/10.2994/SAJH-D-17-00019.1>



**Figure S1.** Water depth inside three enclosures from pond 1 during the study period. Solid line indicates the water level before moving each cage into a deeper part of the pond; small arrows indicate that the cage was moved on that day. The three most important rainfall events and their volumes were included using dashed lines.

**Table S1.** Main features of the surveyed water bodies and additional information on larval development. Average depth was calculated as the average of depths measured inside the enclosures (on day 1 of development) within each pond. Average water temperature was calculated as the average temperature inside the enclosures of each pond; it is provided for 3 d periods of development. Vegetation at the margins and inside the pond refers to the dominant families present in those parts of the ponds. Matrix refers to the dominant landscape of the water body. All sample sizes (number of enclosures) are available for biotic information. Predators were counted on days 6–7 of development. “Initial larval density” is the median number of larvae/L per enclosure on day 7 of development.

	<b>Pond 1</b>	<b>Pond 2</b>	<b>Pond 3</b>
Location	34°40'0.8"S 054°13'57.1"W	34°39'37.4"S 054°13'3.5"W	34°32'39.4"S 054°19'20.6"W
Area (m <sup>2</sup> )	3010.0	278.0	287.0
Average depth (cm)	14.5	5.5	6.5
Average temperature ± SD (°C)	Days 1–7	25.6 ± 3.9	26.4 ± 4.1
	Days 8–19	23.2 ± 3.0	-
	Days 20–29	23.0 ± 4.1	-
Vegetation at the margins	-	Cyperaceae, Juncaceae, Poaceae	Poaceae
Vegetation inside the pond	Cyperaceae, Juncaceae	Cyperaceae, Juncaceae	-
Matrix	dune	dune	grassland
Median predators inside the enclosures ( <i>n</i> )	19 (6)	0	4 (9)
Total eggs laid during breeding events ( <i>n</i> )	839 (6)	1281 (10)	1249 (9)
Initial larval density ( <i>n</i> ; min. – max.)	2.1 (4; 0.9 – 5.2)	-	5.3 (9; 1.5 – 30.1)
Total of survivors until Gosner stage 42 ( <i>n</i> )	5 (1)	0	95 (7)

**Table S2.** Weather conditions before and during the larval development experiment for the three breeding events reported. Temperature in °C; rainfall in mm.

		<b>First event</b>	<b>Second event</b>	<b>Third event</b>
First day of activity reported	Date	20 Feb 2014	27 Feb 2014	4 Mar 2014
	Pond	1 and 2	3	3
	Mean day temperature	18.8	18.7	21.3
	Cumulative rain	4.1	14.4	36.0
20 d before (including activity day)	Mean temperature $\pm$ SD	22.2 $\pm$ 2.1	21.5 $\pm$ 2.2	20.8 $\pm$ 2.0
	Mean rain $\pm$ SD	11.7 $\pm$ 16.6	13.6 $\pm$ 22.8	9.4 $\pm$ 19.6
	Maximum rain	68.6	83.1	83.1
Days of experiment	Total days	27	34	29
	Mean temperature $\pm$ SD	20.0 $\pm$ 1.2	19.7 $\pm$ 1.2	19.6 $\pm$ 2.0
	Mean rain $\pm$ SD	8.3 (18.5)	3.6 $\pm$ 19.6	3.7 $\pm$ 9.6
	Maximum rain	83.1	38.8	22.7