

Willdenowia 51(1) – Electronic supplement

MARIE CLAIRE VERANSO-LIBALAH, ROBERT DOUGLAS STONE, PEPE M. HABA, SÉKOU MAGASSOUBA, GUDRUN KADEREIT & XANDER M. VAN DER BURGT

Phylogenetic placement of *Cailliella praerupticola* (*Melastomataceae*), a rare, monospecific lineage from Guinea, West Africa

Electronic supplement to: Veranso-Libalah M. C., Stone R. D., Haba P. M., Magassouba S., Kadereit G. & Burgt X. M. van der 2021: Phylogenetic placement of *Cailliella praerupticola* (*Melastomataceae*), a rare, monospecific lineage from Guinea, West Africa. – Willdenowia 51: 47–56. doi: <https://doi.org/10.3372/wi.51.51104>

Supplementary figures

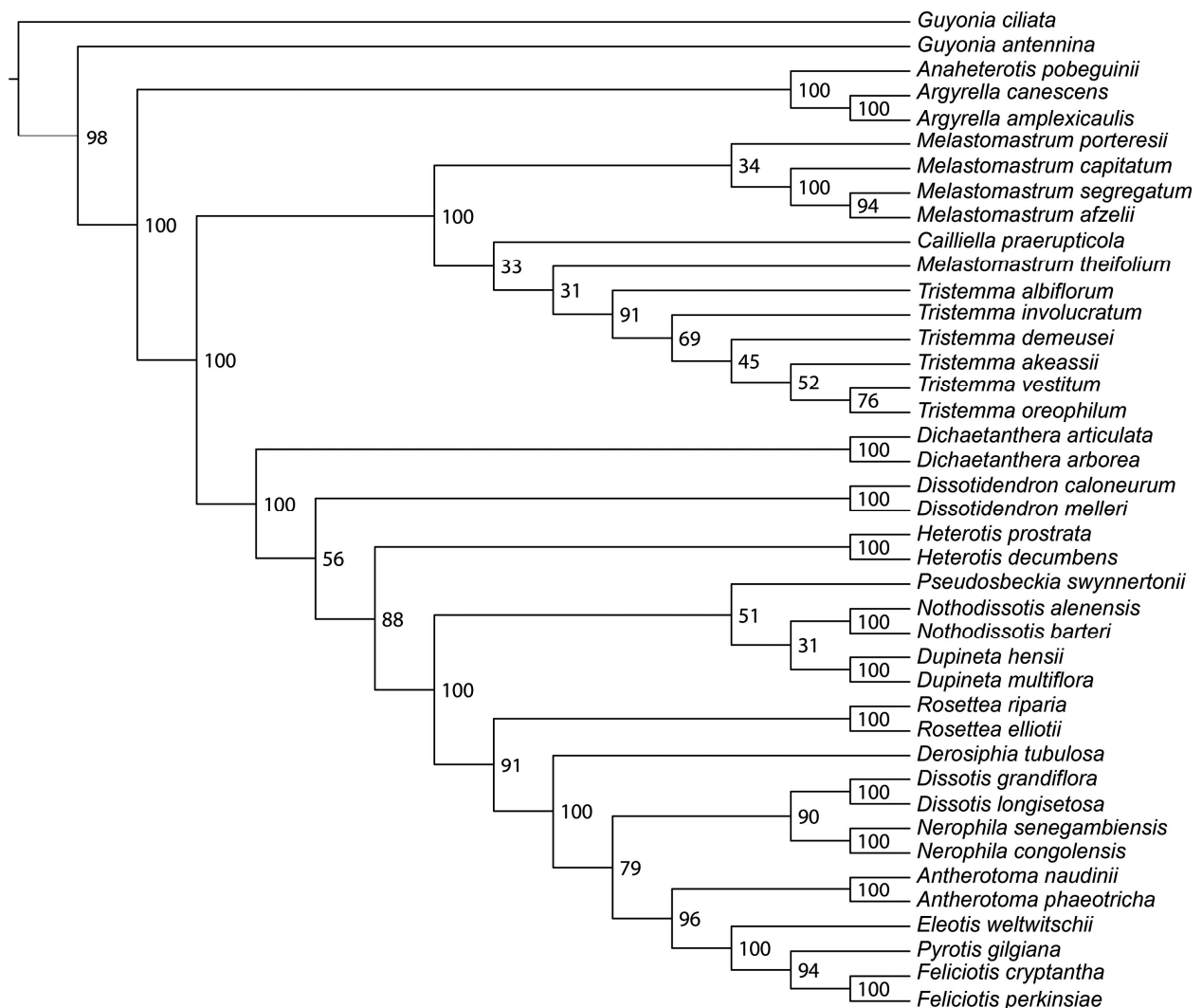


Fig. S1. Maximum likelihood tree of African *Melastomeae* showing the phylogenetic placement of *Cailliella praerupticola* based on nuclear (nrETS and nrITS) matrix. Values on branches refer to bootstrap values resulting from the ML analysis.

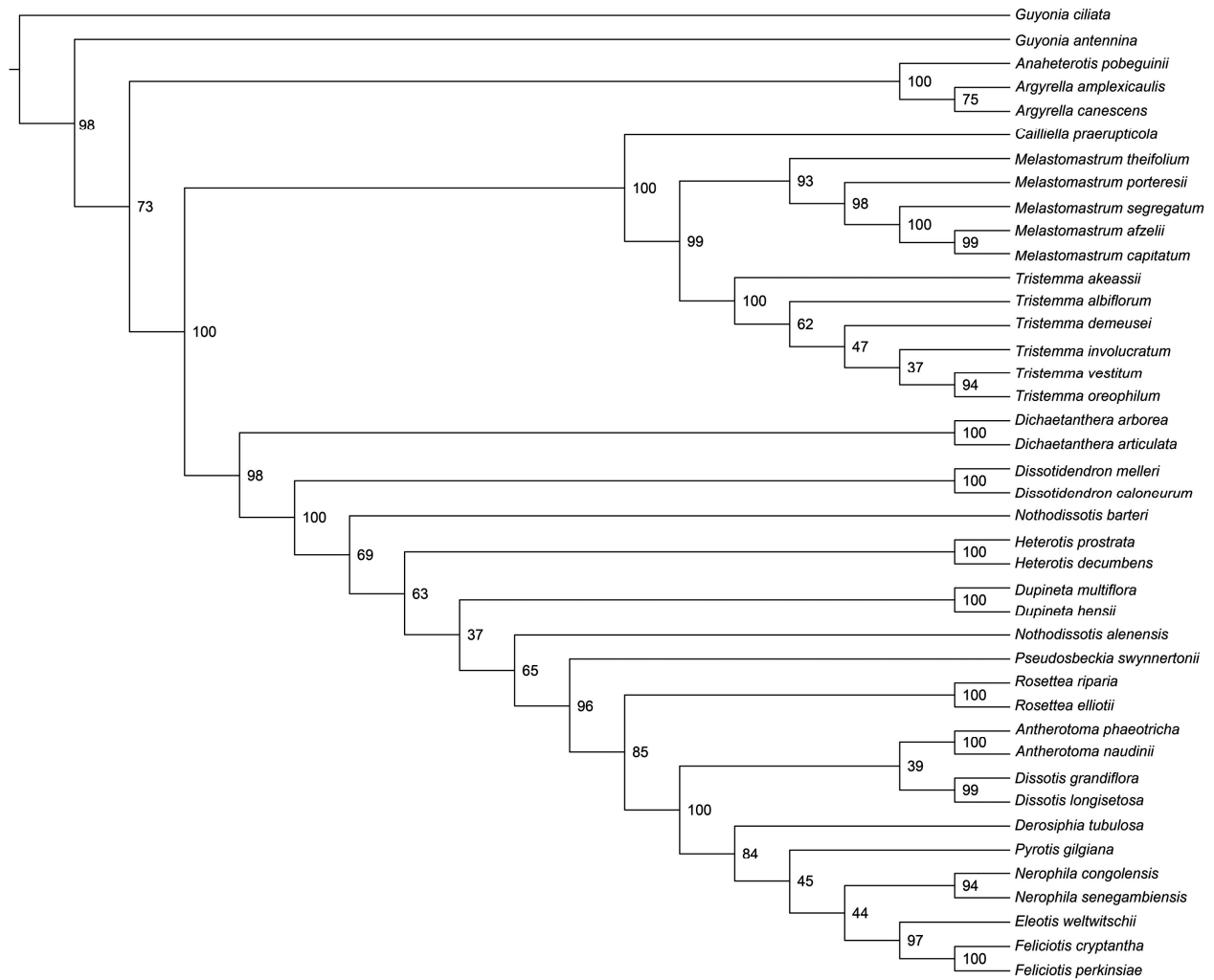


Fig. S2. Maximum likelihood tree of African *Melastomeae* showing the phylogenetic placement of *Cailliella praerupticola* based on plastid (*ndhF*, *psbK-psbL* and *accD-psaI*) matrix. Values on branches refer to bootstrap values resulting from the ML analysis.

Willdenowia

Open-access online edition bioone.org/journals/willdenowia



Online ISSN 1868-6397 · Print ISSN 0511-9618 · 2019 Journal Impact Factor 0.887

Published by the Botanic Garden and Botanical Museum Berlin, Freie Universität Berlin

© 2021 The Authors · This open-access article is distributed under the CC BY 4.0 licence